



IBM Maximo

Smarter Infrastructure Overview

Miguel Ángel Gallardo
IBM EAM Sales Leader
SPGI



Descubra cómo dar un paso más hacia la mejora del rendimiento de sus activos.

Los activos favorecen y posibilitan los negocios a nivel mundial. Para maximizar el valor de sus activos, necesita un conjunto de capacidades diseñadas para satisfacer las exigencias que las organizaciones necesitan para mantener sus plantas o instalaciones a máximo rendimiento.

Maximo Asset Management se caracteriza por su capacidad de adaptarse ante las cambiantes necesidades empresariales y conectar con otros sistemas de la empresa a través de una plataforma de configuración de procesos de negocios flexible y escalable basada en una arquitectura orientada a servicios.

Versión Maximo Asset Management 7.5, amplía las versiones anteriores mediante nuevas características:

- Mejoras en la usabilidad y el rendimiento.
- Mejoras de gestión en la cadena de suministro de materiales.
- Gestión de migraciones mejorada.
- Scripts de automatización.
- Una plataforma unificada.

Pero además, muchos add-ons de la familia Maximo Asset Management V7.5 han sido actualizados, y sus soluciones industriales potenciadas, destacando entre otras la nueva plataforma de soluciones de movilidad, las nuevas capacidades de Maximo Scheduler y la nueva solución para abordar la gestión de Salud, Seguridad y Medioambiente en el trabajo.

Por ello queremos compartir estas nuevas capacidades con usted y **el próximo 23 de Septiembre le invitamos a conocerlas** para dar un paso más en la optimización del rendimiento de sus activos.



Regístrese [aquí](#) para asistir al evento el próximo 23 de septiembre.



Agenda

9:30	Registro y Café de bienvenida
10:00	Visión General de Maximo. Novedades y Roadmap
11:00	Break
11:15	Propuesta de movilidad para Maximo - DEMO
11:45	Maximo HSE - DEMO
12:15	Maximo Scheduler - DEMO
12:45	Cierre y Conclusiones
13:00	Cocktail



Maximo 7.5

Asset Management	Work Management	Materials Management	Purchasing	Contract Management	Service Management
Locations • Repair Facilities Asset Asset Templates Failure Codes Linear Assets • Visual Control Condition Monitoring Meters Meter Groups	Job Plans • Revisioning Routes Service Requests Work Order Tracking • Assignment Tab • Hard/Soft Reservations • Repair Facilities Safety Quick Reporting Labor/Crafts Tools Preventive Maintenance • PM Forecasting Master PM Assignment Manager	Item Master Storerooms Inventory • Inventory Usage • LIFO/FIFO Costing • Consignment • Transfer via Shipment • Default Costing Condition Codes Stocked Tools Service Items	Request for Quotation Receiving Receiving Inspections Shipment Receiving Purchase Requisitions • Invoices • Invoice Reversals Purchase Orders • Revisioning • Receipt Tolerance Desktop Requisitions	Purchase Contracts Master Contracts Warranty Contracts Lease/Rental Contracts Labor Rate Contracts • Premium Pay Rates Payment Schedules	Service Groups SLA Management Change Management • Incidents • Problems • Changes • Releases • Solutions

Enhanced Workflow – Event Driven, Context-based / Escalation Manager

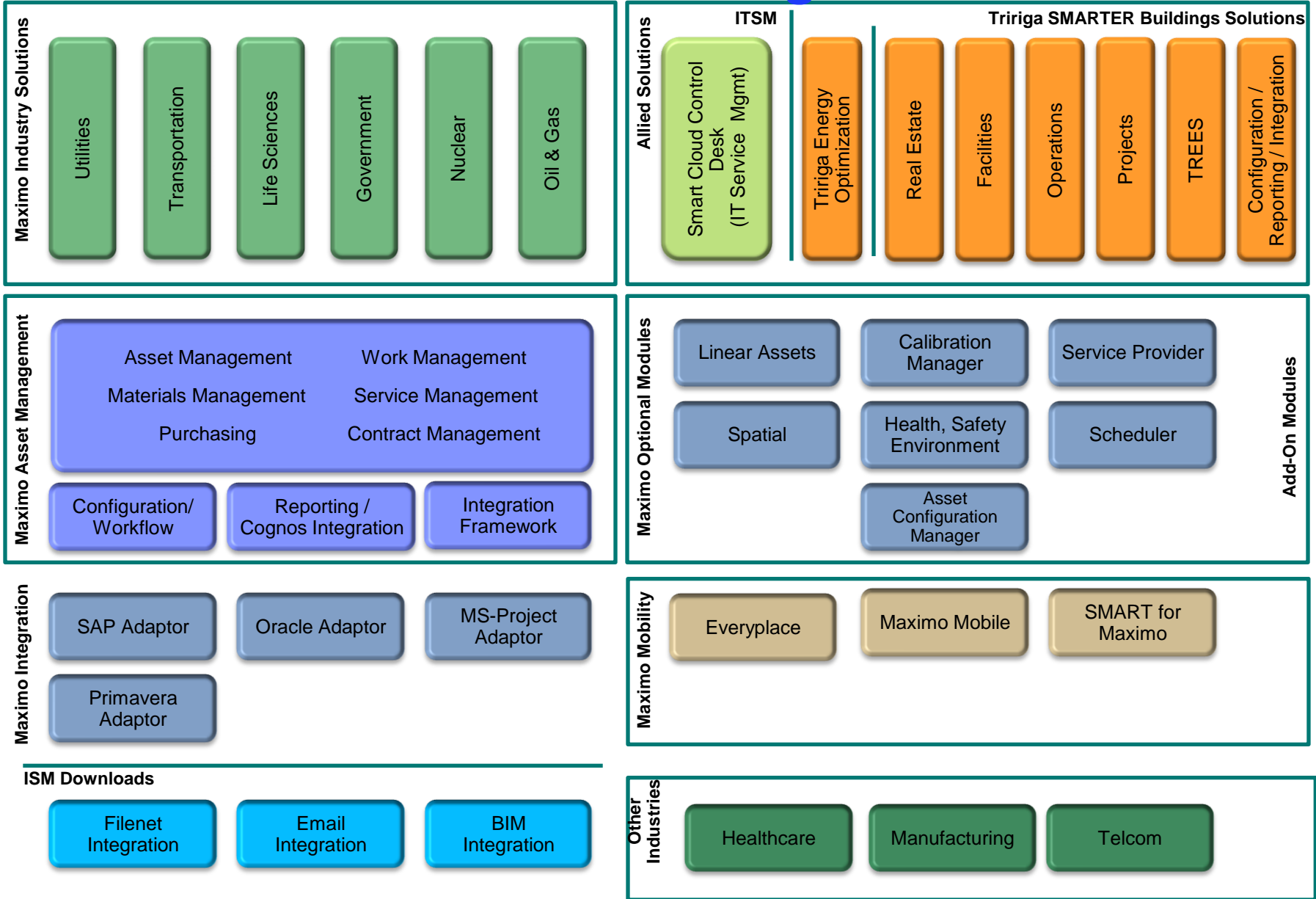
KPIs / Reporting/ Ad-hoc Reporting / Cognos Integration

Security/Administration/Configuration – Automation Scripts, Migration Manager

Integration/Web Services – Import & Export direct from applications



Asset and Facilities Management





2012 Asset Management Product Roadmap In-process

2012 Focus:

- Address high-value customer requirements across multiple industries and markets with delivery of new solution for advanced Scheduling, Dispatch & Routing of work
- Enhance existing Maximo, TRIRIGA and ISM solutions
- Continued maintenance for multiple releases, delivering Fix-packs for R6.2.x, 7.1.x and 7.5.x

Maximo Adapter for SAP
Fix-pack 7.5.0.1

Maximo
Fix-pack 7.5.0.2

TRIRIGA 10.2
- Additional Languages

Advanced Scheduling

Fix-pack 7.5.0.3
- Features:
- Crews
- Public Map API
- Service Addresses

Maximo Scheduler 7.5.1.0
- Schedule Compliance
- Graphical Labor Assignments
- Dispatching
- Additional Resources
- WO Actions

TRIRIGA 10.3
- Reservation Mgmt
- Sustainability enhancements
- Building System Integrations

Maximo
Fix-pack 7.1.1.12

Maximo
Fix-pack 7.5.0.4

Maximo Industry Solutions and Add-On's
7.5.x.0

Maximo Scheduler
7.5.x.0
- Schedule and Route Optimization



Smart Cloud Control Desk 7.5

IT Asset Mgmt

Service Mgmt

Change Mgmt

TRIRIGA Energy Optimization - Rebranding

Maximo
Fix-pack 7.1.1.11

Maximo Service Provider
Fix-pack 7.5.1.1

Maximo for Utilities
Fix-pack 7.5.0.1

Maximo for Spatial
Fix-pack 7.5.0.1

Maximo Nuclear 7.5.1.0
• LCO Tracking
• Duty Stations

Maximo-TRIRIGA Integration
• Space & Move Mgmt
• ISM download

Maximo
Fix-pack 6.2.9

Smart Cloud Control Desk
7.5.x

Maximo Mobile
7.5.1.0
• Android support

Maximo Oil & Gas/HS&E
7.5.1.0
• Permit to Work
• Audit and Surveys

Key

Fix-Packs

7.x.0.0 Releases

New Products

Planned Releases

The information on the new product is intended to outline our general product direction and it should not be relied on in making a purchasing decision. The information on the new product is for informational purposes only and may not be incorporated into any contract. The information on the new product is not a commitment, promise, or legal obligation to deliver any material, code or functionality. The development, release, and timing of any features or functionality described for our products remains at our sole discretion.

IBM 2013 Product Roadmap

2013 Focus:

- Optimization, Mobile Applications and Analytics
- Address high-value customer requirements across multiple industries
- Continued maintenance for multiple releases, delivering Fix-packs for 7.1.x and 7.5.x

Maximo Mobile 7.5.1.0

- Android support
- RFID

Maximo-TRIRIGA Integration

- Capital Project Management
- ISM download

Maximo Fix-pack 7.5.0.4

Maximo ACM/Transportation 7.5.1.0

- Aviation/Spec 2000
- Flight Log Book
- Progressive Inspections

Maximo Industry Solutions and Add-On's 7.5.x.0

TRIRIGA Energy Optimization

- Real-time energy & operating analytics
- Event filtering & correlation and root cause analysis
- Operations dashboard
- Work request generation

TRIRIGA 10.4

- Implementation accelerators
- Localization enhancements
- Expand DB and browser support
- CAD integrator support for Revit

Next Generation Mobile

- Mobile platform
- Multiple Device Support
- Connected/Disconnected
- Application Designer

H1 2013

H2 2013

Smart Cloud Control Desk 7.5.1

Maximo Oil & Gas/HS&E 7.5.1.0

- Permit to Work
- Audit and Surveys

Maximo Fix-pack 7.1.1.12

DCIM (partner product)

- SCCD and Asset integration
- SCCD and Process integration

Maximo Fix-pack 7.5.0.5

Maximo Scheduler 7.5.2.0

- Automated Schedule Optimization
- Automated Route Optimization

Maximo 7.x

- Multi Tenancy support
- Updated Platforms
- UX improvements
- Crews
- Service Addresses
- Map Control

Analytics

- KPI/Reporting
- SPSS
- iLog
- Cognos

Maximo Fix-pack 7.1.1.13

Key

Fix-Packs

7.x.0.0 Releases

New Products

Planned Releases

The information on the new product is intended to outline our general product direction and it should not be relied on in making a purchasing decision. The information on the new product is for informational purposes only and may not be incorporated into any contract. The information on the new product is not a commitment, promise, or legal obligation to deliver any material, code or functionality. The development, release, and timing of any features or functionality described for our products remains at our sole discretion.



IBM Maximo

Health, Safety & Environment Manager



Mejores Prácticas para mejora de iniciativas de HSE, Fiabilidad y Calidad.

- *Integrando los procesos de salud, seguridad y medio ambiente con la gestión de los activos y los trabajos.*

- Capacidades líderes y mejores prácticas para la mejora de la seguridad, fiabilidad y cumplimiento regulator.
- Facilita que se cumplan o incluso se superen las regulaciones y los requisitos legislados que afectan a la salud, la seguridad y el medio ambiente.
- La estandarización es la base para la medición, la evaluación comparativa y mejorar continuamente el rendimiento
- Colaboración en todas las operaciones, ingeniería, mantenimiento y la dirección permite eficiencias operativas y mejores prácticas para la salud, seguridad y gestión de medio ambiente.
- Solución completa para la mejora de las actividades encaminadas al cumplimiento de los requisitos reguladores en un entorno de gestión de riesgo, seguridad y calidad.

– El objetivo principal de las iniciativas de HS&E (Health, Safety, and Environment) es **reducir el riesgo general**, cumpliendo con los requisitos **reguladores de la industria o estatales** y crear un entorno operativo para la compañía aún **más eficiente**.

– La solución de Maximo para Health, Safety, and Environment proporciona extensiones claves a MAM proporcionando aplicaciones claves para la gestión de auditorías, riesgo, informes de seguridad, gestión de cambios, informes de condición, acciones correctivas y de formación.





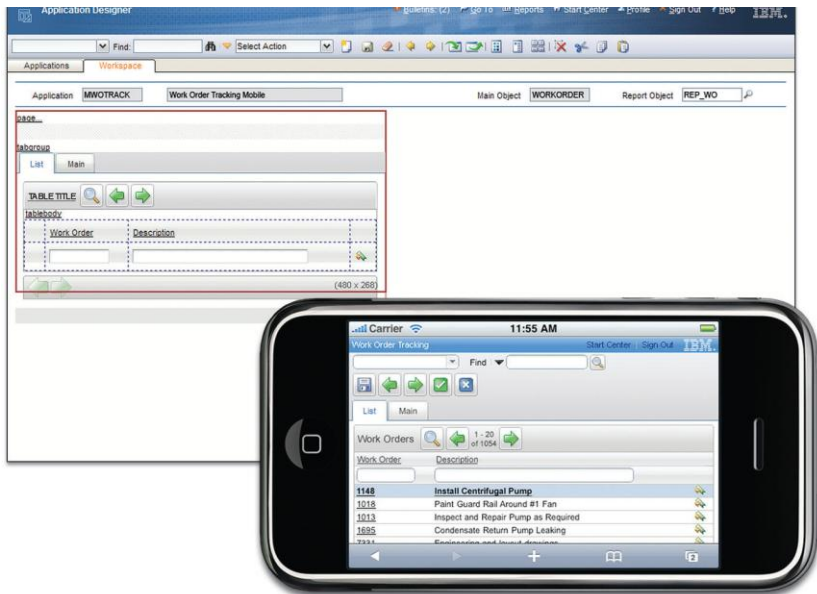
IBM Maximo

Solución de Movilidad



IBM Maximo Everyplace

Permite a los usuarios acceder a cualquier aplicación existente de IBM Maximo en un iPhone, iPad, iPod touch, Android, Blackberry u otro dispositivo compatible sin necesidad de instalar nada en estos dispositivos



Maximo Everyplace permite a los usuarios:

- Acortar el tiempo de espera entre un la ocurrencia de un evento y el registro de ese evento en el sistema. No hay necesidad de esperar hasta que regrese a su escritorio para introducir o extraer datos.
- Aumentar la precisión de los datos en el sistema permitiendo introducir información mientras está fresco en sus mentes.
- Ofrecer un acceso cómodo, orientado a Maximo para los trabajadores que regularmente no se sientan en un escritorio o utilizan un ordenador.

IBM Maximo Mobile – Características Generales

- **Operaciones “Connected vs. Disconnected”**
 - Transparente para el usuario
 - Utiliza conectividad cuando hay disponibilidad
 - “Store-and-Forward” utilizando una BD movil local
 - Actualizaciones automáticas y transmisiones configurables
 - Soporta:
 - Dock in the Morning, Dock in the Evening
 - Spotty Connectivity (Wi-Fi)
 - Full Connectivity (Wi-Fi or Cellular)

- **E-Signature y E-Audit**

- **Barcode Enabled – RFID Ready**
 - Todos los campos capacitados
 - Smart-Barcoding disponible en algunas pantallas
 - Configurable para RFID

IBM Maximo Mobile – Oferta

IBM Maximo Mobile Work Manager

Standard Features

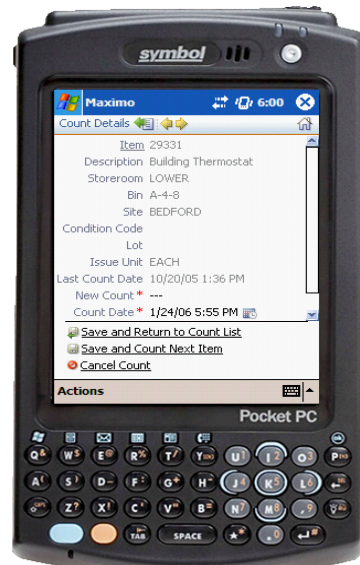
- Work Orders, Service Requests, Incidents, Problems, Changes and Releases
- Asset & Location Details
 - History, Meters, Spare Parts, etc.
- Linear Assets
- Job Plans
- Safety plans
- Scheduled Dates & Priorities
- Identify/Create Work Orders, Service Requests
- Route/Rounds Management
- Reporting Actuals
 - Labor Time
 - Parts
 - Asset Downtime
 - Meter Readings
 - Observations & Inspections
 - Failure Reports
- Start/Stop timer changes (premium pay codes)
- Attached Documents
- Independent Status Change
- Crew Management and Reporting

Calibration Option

- Calibration data entry
- Datasheets

IBM Maximo Mobile Inventory Manager

- Physical Count of Items in Storerooms
- Issue of parts to work orders and laborers
 - Issue multiple parts to Work Orders
- Return of parts to storeroom
- Transfer of inventory between storerooms
- PO Receiving
 - Inspections
 - Serialization
- New Stocked vs. Non-Stocked Item rules enforcement
 - New Hard vs. Soft Reservation rules enforced
 - Support for PO Revisioning
 - Validate GL Date Ranges
 - Validate Receipt Quantities for Receipt Tolerance

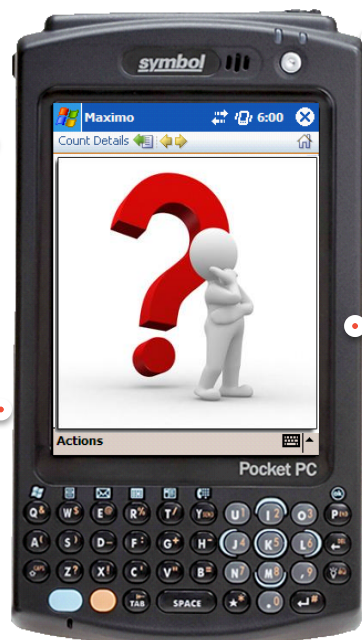


IBM Maximo Mobile Asset Manager

- Navigate location and asset hierarchies with a drill down UI
- View & Modify
 - Details, Classification Attributes
 - Spare Parts & Subassemblies
 - Users & Custodians
- Enter Meter Readings
- Move & Swap
- Update Status
- Create New Assets, Locations and CIs
- Audit/Asset Inventory/Discovery Mode
- View/Create/Manage by Route or Collection
- Issue Items From Storeroom (typically software in the IT world)

Solo para Maximo?

Conectado /
Desconectado



Para qué dispositivo o SO es válida?

Adaptaciones?

GPS, RFID, etc

Nueva Solución Móvil

- Solución de movilidad única para cubrir toda la oferta de Gestión de Activos; Maximo, Ind. Solutions, TRIRIGA y SmartCloud Control Desk
- Soporta tanto los escenarios de uso **conectados** como **desconectados**
- Ejecutable en los sistemas operativos móviles más populares
- **Proporciona un conjunto de herramientas de configuración para que los clientes personalicen sus aplicaciones móviles**
- Utiliza la tecnología IBM MobileFirst con las capacidades líderes del mercado

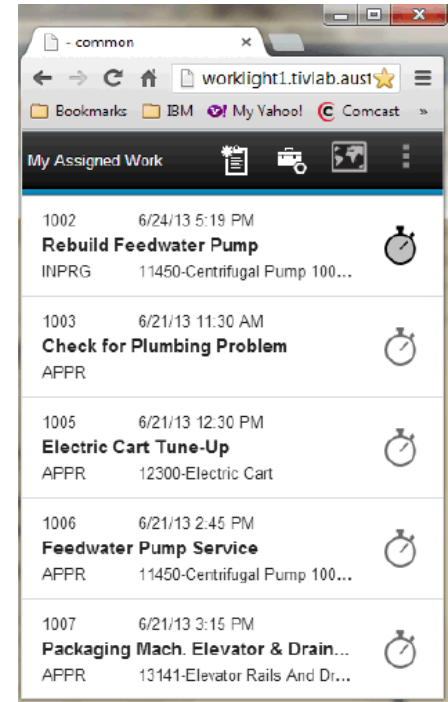
Beneficios:

- Plataforma única para todo nuestro portfolio de productos
- Fácil acceso desde cualquier parte
- Múltiples dispositivos
- Muchas aplicaciones móviles ligeras basadas en el role
- El Cliente con control total del interfaz (UI) de sus usuarios móviles



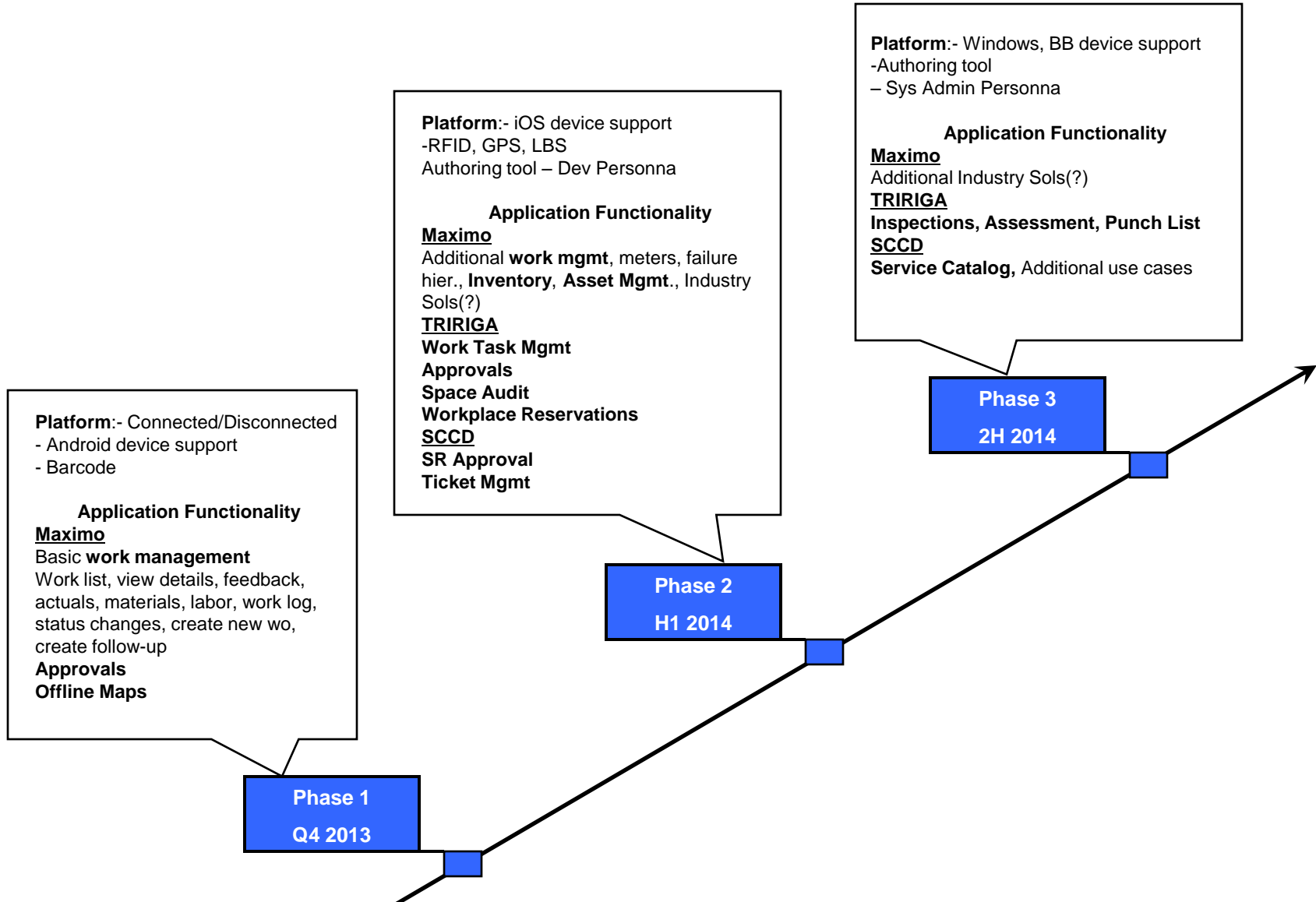
IBM Phase 1 Deliverables

- Android Only (iOS phase 2, Windows currently phase 3)
- Maximo (TRIRIGA & SCCD mobile apps phase 2)
- Connected/Disconnected operation
- Work Management field response role
 - Receive work
 - Review planned details, materials, labor, tools, task details
 - Feed back on actual materials, labor, tools
 - Start/Stopwatch buttons (quick, minimum click completion)
 - Review map with assigned work locations, directions
 - Status changes, create new work, create follow-up work
 - Work Log (voice to text)
 - Barcode scanning
- Configuration Tools arriving in Phase 2
- Phase 1, customers can edit html and java script directly



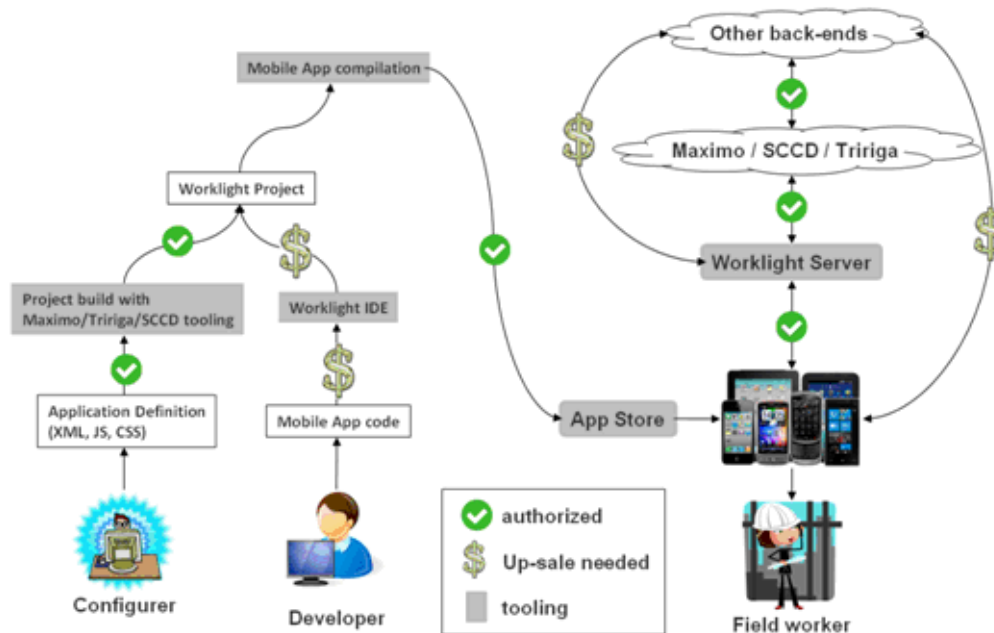


Maximo Anywhere Roadmap



The information on the new product is intended to outline our general product direction and it should not be relied on in making a purchasing decision. The information on the new product is for informational purposes only and may not be incorporated into any contract. The information on the new product is not a commitment, promise, or legal obligation to deliver any material, code or functionality. The development, release, and timing of any features or functionality described for our products remains at our sole discretion.

What is the Maximo/Tririga bundeling



IBM Worklight is bundled as a supporting program (i.e. can be used only in Maximo / SCCD / Tririga context as for the Portal agreement) to operate IBM delivered mobile apps and derive custom ones inline with following terms and conditions:

Included / Allowed:

- Customer operating IBM mobile apps (may be multiple)
- Customer adapting IBM mobile apps to their needs: mobile apps variants will be created from higher level descriptions (XML or JavaScript as input to Maximo's app assembly tooling which creates Worklight projects as output then built to create binaries put on AppStores).

Excluded / Not Allowed – those are up sales cases:

- Customer making IBM mobile app connect to something else than Maximo / SCCD / Tririga back ends
- Customer or partner creating a new Worklight project
- Customer creating new apps & projects with Worklight tooling (derivatives using Maximo tooling is allowed)

On motivations:

- Vertical solutions essential for the overall MobileFirst offering and IBM success in this space
- Technology stack reuse, alignment and enrichment accelerates our capabilities / features
- Seed new market segments. When Maximo mobile tooling limits are reached and customer is looking for a MEAP for custom developments and adaptations, IBM would have an edge:
 - Maximo tooling generate Worklight projects which will serve as starting point for deep customization / custom coding for advanced needs
 - Worklight infrastructure being already deployed to operate Maximo mobile apps, many IT departments will look for consolidation. giving us an edge over other MEAP choices.



IBM Maximo

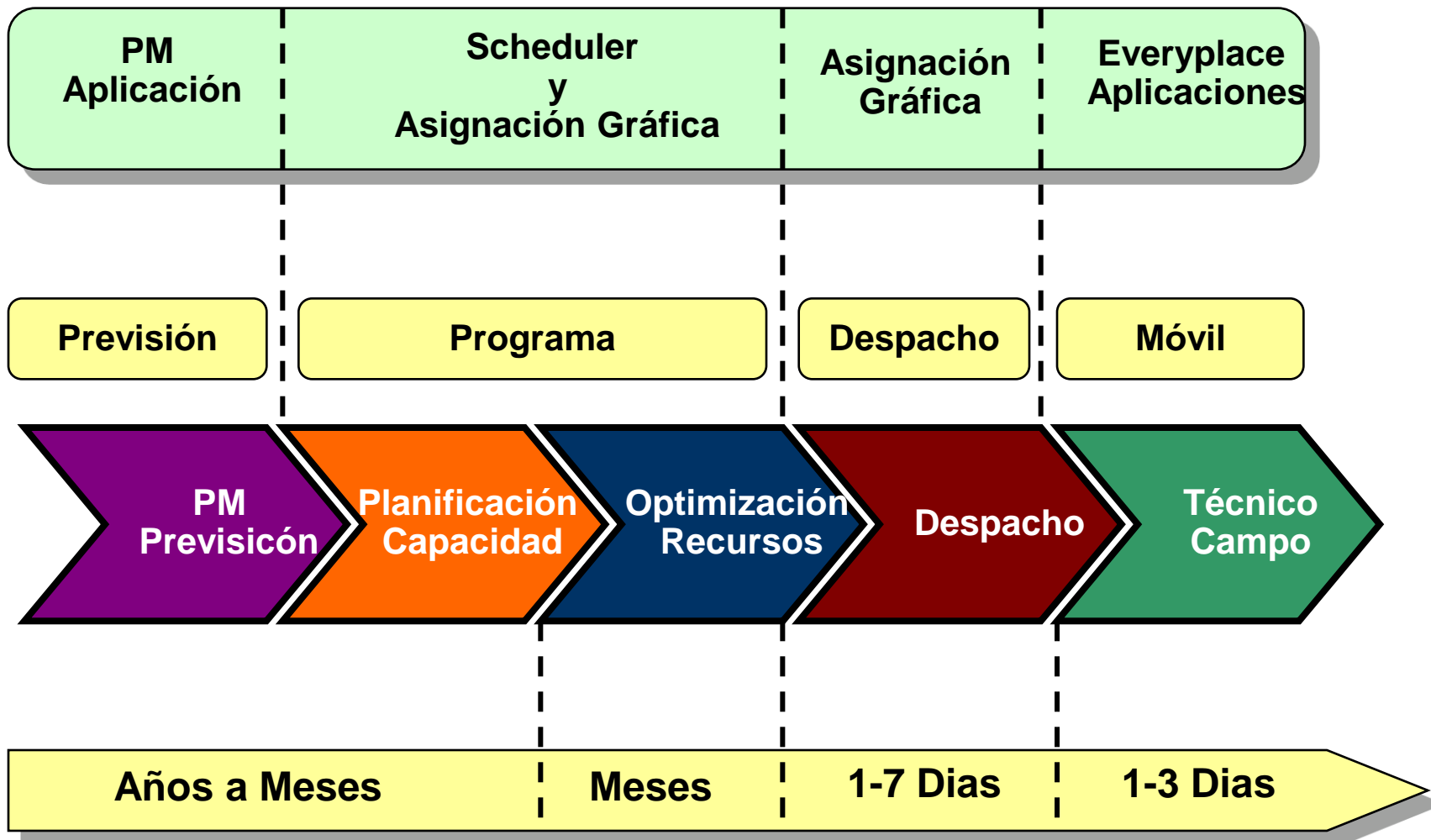
Solución Planificación y Programación



Áreas de foco



Utilización Funcional en el Tiempo



Vista Gantt para visualizar OT's y tareas

- *Drag & drop OT's & tareas*
- *Gestión dependencias*
- *Realización y cálculo de camino crítico (CPM)*
- *View resource load and availability*

OT's

- *Restricciones de Fechas*
- *Dependencias de Tareas*

Scheduler 7.1

Scheduler 7.1.1

Vista Gantt para visualizar la previsiones de PM's

- Ver y gestionar PM's futuras y OT's
- Ver la carga de recursos y disponibilidad de los mismos tanto para las OT's como para las PM's futuras

OT's

- Reprogramar todo un bloque de OT's
- Gestor asignaciones en la aplicación de OT's



Lógica Precedencia y Restricciones Actividades

- *Lógica precedencia añadida entre OT's/Tareas que tienen el mismo padre*
- *SNE/FNL restricciones fechas calculadas automática desde JP/PM*

Predecessors: >>

Select Predecessors

Filter > 1 - 1 of 1 Download

Task	Description	Site	Relationship	Lead/Lag Hours
<input type="checkbox"/>	10 Relocate guard rails to allow fork truck access	BEDFORD	FS	0:00

OK Cancel

Scheduling Information

Target Start: 01/03/12 10:08

Target Finish: 30/11/12 00:00

Scheduled Start: 01/03/12 10:08

Scheduled Finish: 30/11/12 00:00

Start No Earlier Than: 01/04/12 10:34

Finish No Later Than: 31/10/12 20:34

Edit Constraint

Define the relationship between the work records, which will determine the scheduling order. [More information](#)

Predecessor and Successor Activities

Predecessor: First activity

Successor: Second activity

Constraint Type

Finish to Finish

Finish to Start

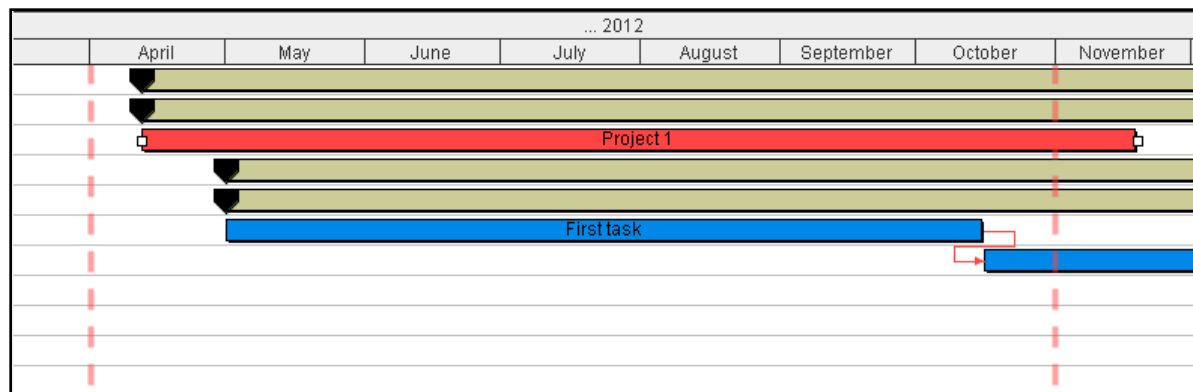
Start to Finish

Start to Start

Lead and Lag

Lead and Lag Time (Hours): 0:00

OK Cancel



PM Forecasting

Generate Forecast

Enter the period of time for which to forecast preventive maintenance records. The forecast can be run in the background. Forecasted dates will appear on the Forecast tab.

Last Forecast Date:

* Forecast Until:

* Forecast For (Days):

Run Forecast Generation in the Background?

Notification E-mail for Forecast Generation:

NOTE: If reforecast is pending, forecast dates will be adjusted appropriately when this action is executed.

Preventive Maintenance

Find: Select Action

List PM Frequency Seasonal Dates Job Plan Sequence PM Hierarchy Forecast

PM: IC-12400 Forklift #2 Quarterly Inspection and Certification Site: BEDFORD Status: ACTIVE

Forecast Dates Locked? Reforecast Subsequent Dates?

Forecast Details Filter 1 - 5 of 5 Download

Forecast Date	Job Plan	New Date	Changed By	Changed Date	Remarks	Reforecast Pending?
4/30/12	INS12100	5/7/12	WILSON	4/30/12 8:01 AM		<input checked="" type="checkbox"/>
7/29/12	INS12100					<input type="checkbox"/>
10/27/12	INS12100					<input type="checkbox"/>
1/25/13	INS12100					<input type="checkbox"/>
4/25/13	INS12100					<input type="checkbox"/>

System Message

BMXAT0194E - Would you like to reforecast subsequent dates in the forecast now? If you select no, the subsequent dates will be updated when the PM Forecast cron task runs.

Scheduler

Bulletins: (0) Go To List Reports Start Center Profile Sign Out Help

Find: Select Action

List Schedule Gantt View

Description Filter Sort by the Default V... Show All Print Activity Chart Print Resource Chart

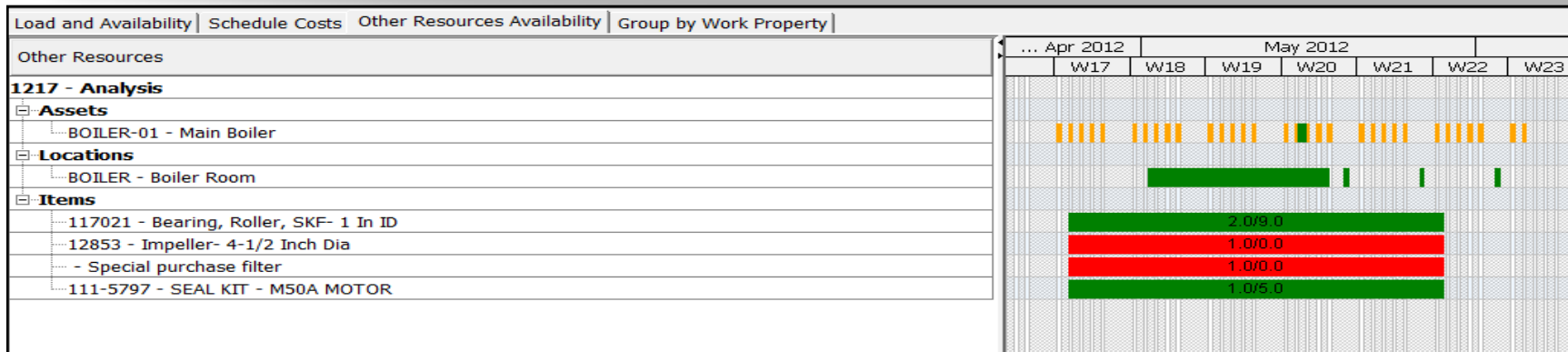
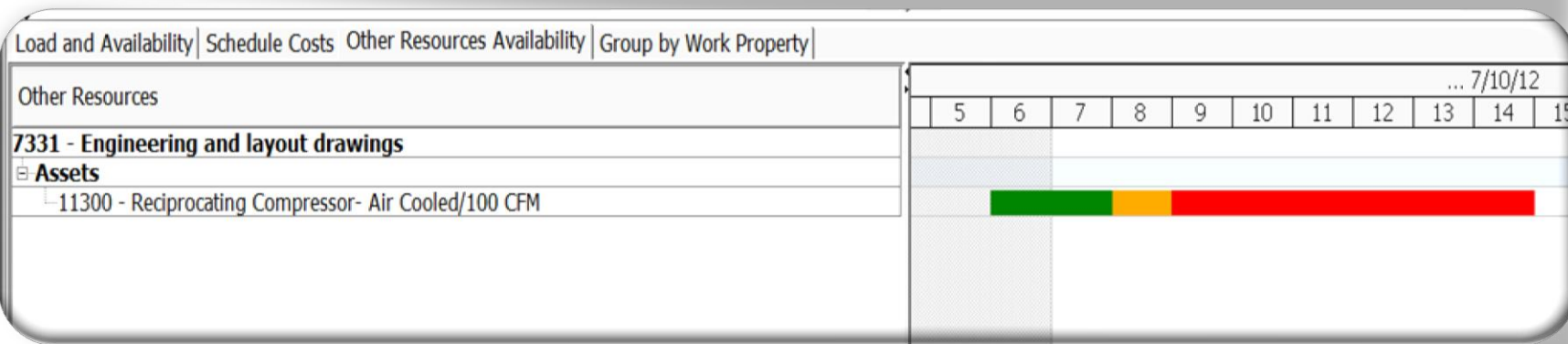
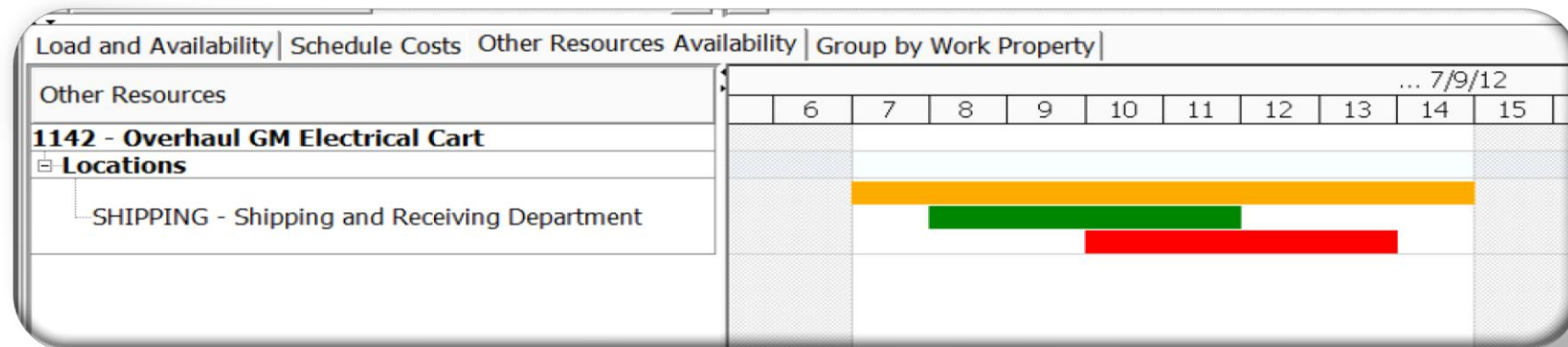
Work	Task	Description	Start Date
		Work Order & Forecasts	11/1/10 12:00 AM
		Preventive Maintenance	11/1/10 12:00 AM
1010		Inspection - with Job Plan Sequence	11/1/10 12:00 AM
1011		Inspection - Has effect on Subsequ...	11/1/10 12:00 AM
1008		Daily Inspection - Forecast Dates L...	11/1/10 12:00 AM
1009		General Inspection - No effect on S...	11/1/10 12:00 AM
		Work Orders	11/1/10 10:08 AM

November

11/1/10	11/2/10	11/3/10	11/4/10	11/5/10
Work Order & Forecasts				
Preventive Maintenance				
Work Orders				



Disponibilidad Activo & Ubicación & Material





Acciones sobre las OT's

Change Status

Work Order: T1006 Connect anti-static device and remove back cover

Status: APPR Approved

New Status:

Status Date: 04/05/12 12:22

Print Work Order(s)?

Change work order status in back ground?

Notification E-mail for Work Order Change Status: tester3@maximoesqa.com

OK Cancel



List Schedule **Gantt View** Cost Compliance

Description Filter: Sort by the Default V... Show All Activity Chart

Work	Task	Description	Start Date	End Date
		MYSCHED My Work Orders	5/5/10 ...	3/4/12 ...
		Work Orders	5/5/10 ...	3/4/12 ...
1141		Processor #1	2/11/11...	2/11/11...
1141		Change Status	2/11/11...	2/11/11...
1141		Initiate Workflow	2/11/11...	2/11/11...
1141		Modify Work Details	2/11/11...	2/11/11...
1141		Select Owner	2/11/11...	2/11/11...
1141		Create Communication	2/11/11...	2/11/11...
1142		View Item Availability	2/11/11...	2/11/11...
1142		Create Work Order	2/11/11...	2/11/11...
1142		Create Job Plan	2/11/11...	2/11/11...
1142		Assign to New Parent	2/11/11...	2/11/11...
1142		Create SR	2/11/11...	2/11/11...
1143		Create Incident	2/11/11...	2/11/11...
1143		Create Problem	2/11/11...	2/11/11...
1143		Create Change	2/11/11...	2/11/11...
1143		Create Release	2/11/11...	2/11/11...
1143		Go To Quick Reporting	2/11/11...	2/11/11...
1150		Go To Work Order Tracking	2/11/11...	2/11/11...
1157		Go To Everyplace Technician (Tablet)	2/11/11...	2/11/11...

Proyección Coste Programa y Seguimiento

Scheduler Bulletins: (0) Go To Reports Start Center Profile Sign Out Help

Find: Select Action

List Schedule Gantt View **Work Cost** Compliance

Schedule: MYSCHED

Last Saved Date: 17/02/11 23:29

Last Committed Date:

Week Month Year

Work Cost: Filter Download

Year	Week	Saved Est. Labor	Actual Labor	Saved Est. Material	Actual Material	Saved Est. Service	Actual Service	Saved Est. Tool	Actual Tool	Committed Est. Total	Saved Est. Total	Actual Total
2005	6	0.00	0.00	0.00	0.00	0.00	0.00	0.00	0.00	432.90	0.00	0.00
2011	7	532.40	175.00	243.22	16.89	0.00	0.00	0.60	0.00	0.00	778.22	191.89
2011	8	119.25	0.00	50.43	276.00	0.00	5,222.00	0.00	0.00	0.00	169.68	5,498.00
2011	10	0.00	0.00	0.00	0.00	0.00	0.00	0.00	0.00	94.60	0.00	0.00

Details

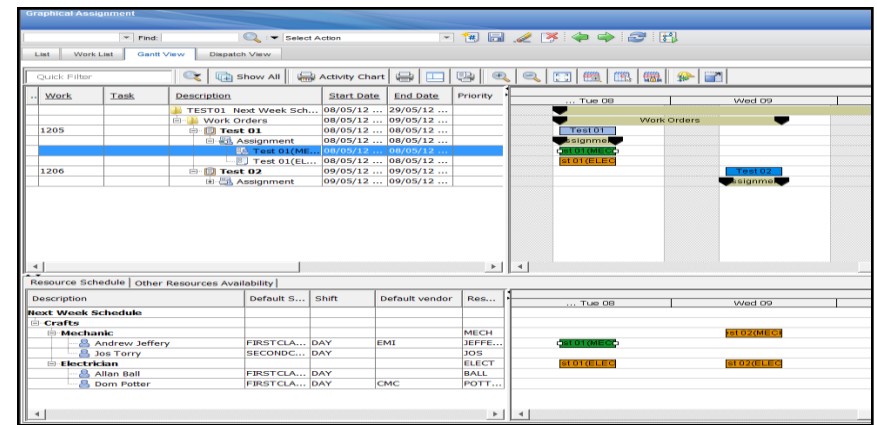
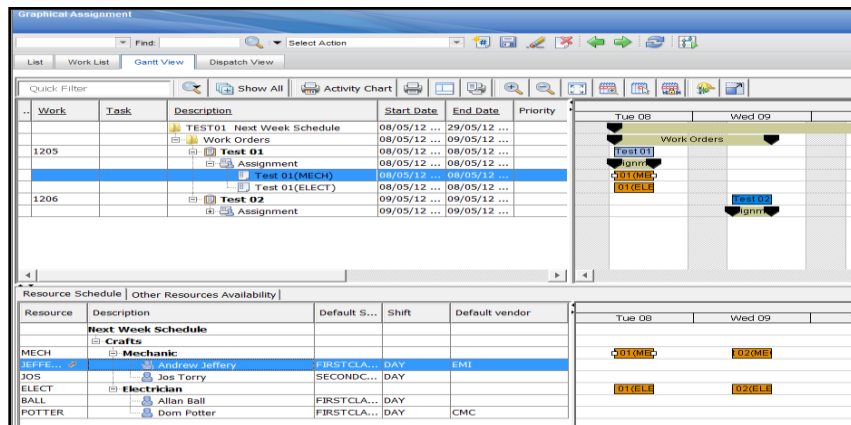
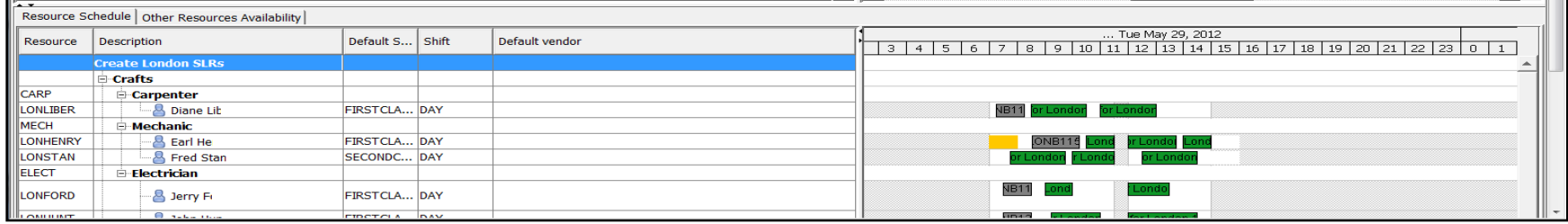
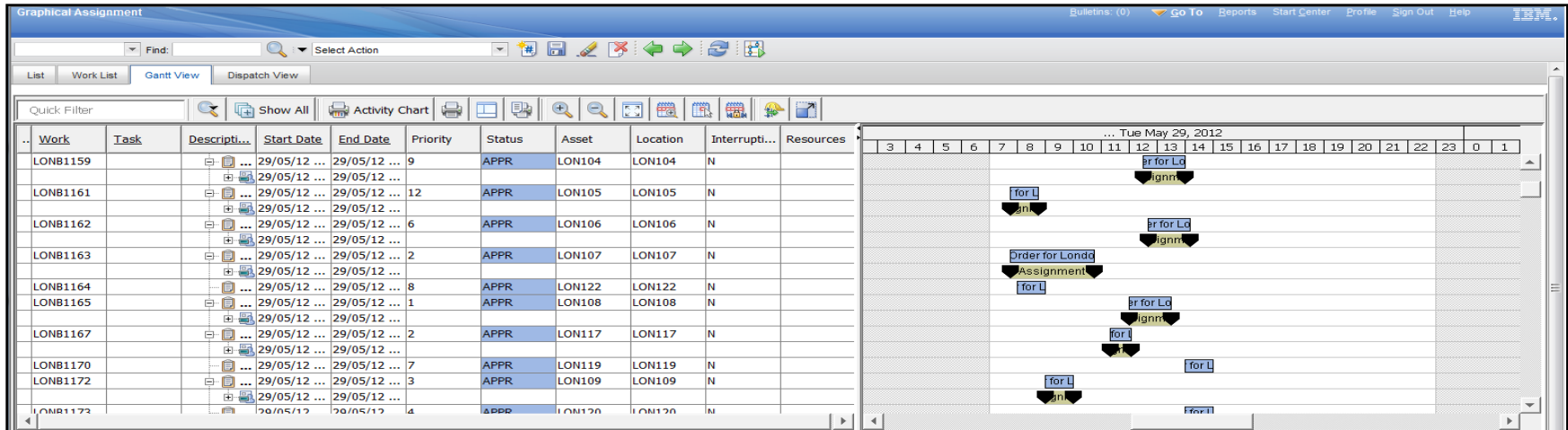
Year: 2011 Week: 8 Created Date: 19/04/12 10:59

Total Cost		Labor Cost		Material Cost	
Committed Est. Total:	0.00	Committed Est. Labor:	0.00	Committed Est. Material:	0.00
Saved Est. Total:	169.68	Saved Est. Labor:	119.25	Saved Est. Material:	50.43
Actual Total:	5,498.00	Actual Labor:	0.00	Actual Material:	276.00

Service Cost		Tool Cost	
Committed Est. Service:	0.00	Committed Est. Tool:	0.00
Saved Est. Service:	0.00	Saved Est. Tool:	0.00
Actual Service:	5,222.00	Actual Tool:	0.00

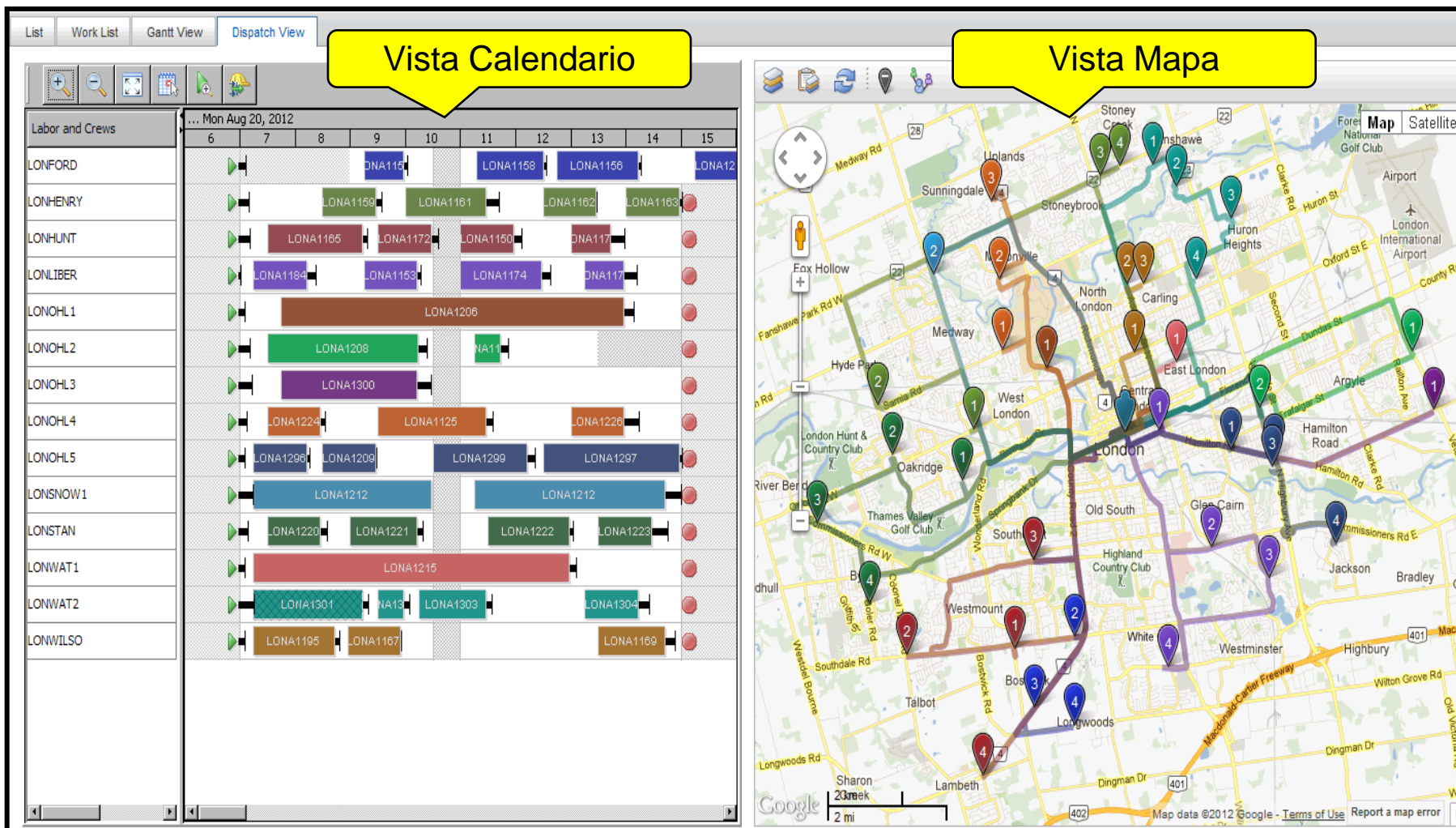


Asignación gráfica de MO





Vista del Operador



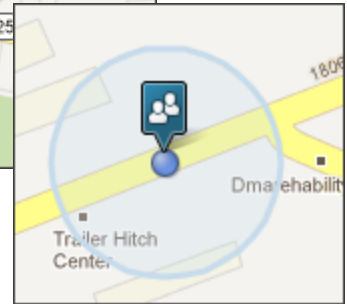
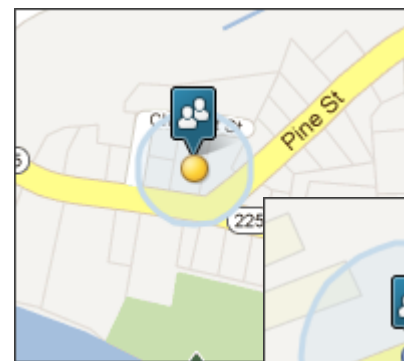
Seguimiento geoposicional de MO & Cuadrillas



Blue cuando la última actualización fue dentro de los 60 minutos

Red última actualización precisión es superior al límite

Yellow última actualización fuera 60 '



Everyplace Technician (Tablet) - Mozilla Firefox: IBM Edition

File Edit View History Bookmarks Tools Help

9.32.229.192/maximo/ui/?event=loadapp&value=techttablet

Most Visited IBM My Yahoo! Comcast RTC: Maximo Plans Mobile Dev Wiki Facebook

Everyplace Technician (Tablet)

Required Materials 1 - 4 of 4

Item	Description	Storeroom	Quantity
11241	Contactor, Renewal Kit	CENTRAL	3.00
11453	Seal, Mechanical, Self Aligning- 1 In ID	CENTRAL	3.00
XMP-9500	Gasket- AR46	CENTRAL	3.00
Z-RAGS	Rags, Cloth	CENTRAL	2.00

1 - 4 of 4

Required Tools 1 - 1 of 1

Tool	Description	Storeroom	Quantity
TORQUE	TORQUE WRENCH-20 FT-LB CAPACITY		3.00

1 - 1 of 1

SLR del Técnico de Campo

Requerimientos de Material del Técnico de Campo

Requerimientos de Utilaje del Técnico de Campo

Però què bonit seria si
 ademàs optimitzara los
 recursos
 automàticament.....



7.1.X

OT's en un Gantt
Previsión PM
Ver Carga MO/Disp.

7.5.1

OT's en un Gantt
Previsión PM
Ver Carga MO/Disp.

*Disp. Activo, Ubicación,
Util & Artículo.
Asignación Gráfica
Despacho
Cumplimiento Programa*

7.5.2

OT's en un Gantt
Previsión PM
Ver Carga MO/Disp.

*Disp. Activo, Ubicación,
Util & Artículo.
Asignación Gráfica
Despacho
Cumplimiento Programa*

*Optimización Asig.
Cuadrillas
Planificación Capacidad,
Nivelación de Recursos,
Asignación MO y Programación
Espacial
Gestión Escenarios*

Focus Areas:

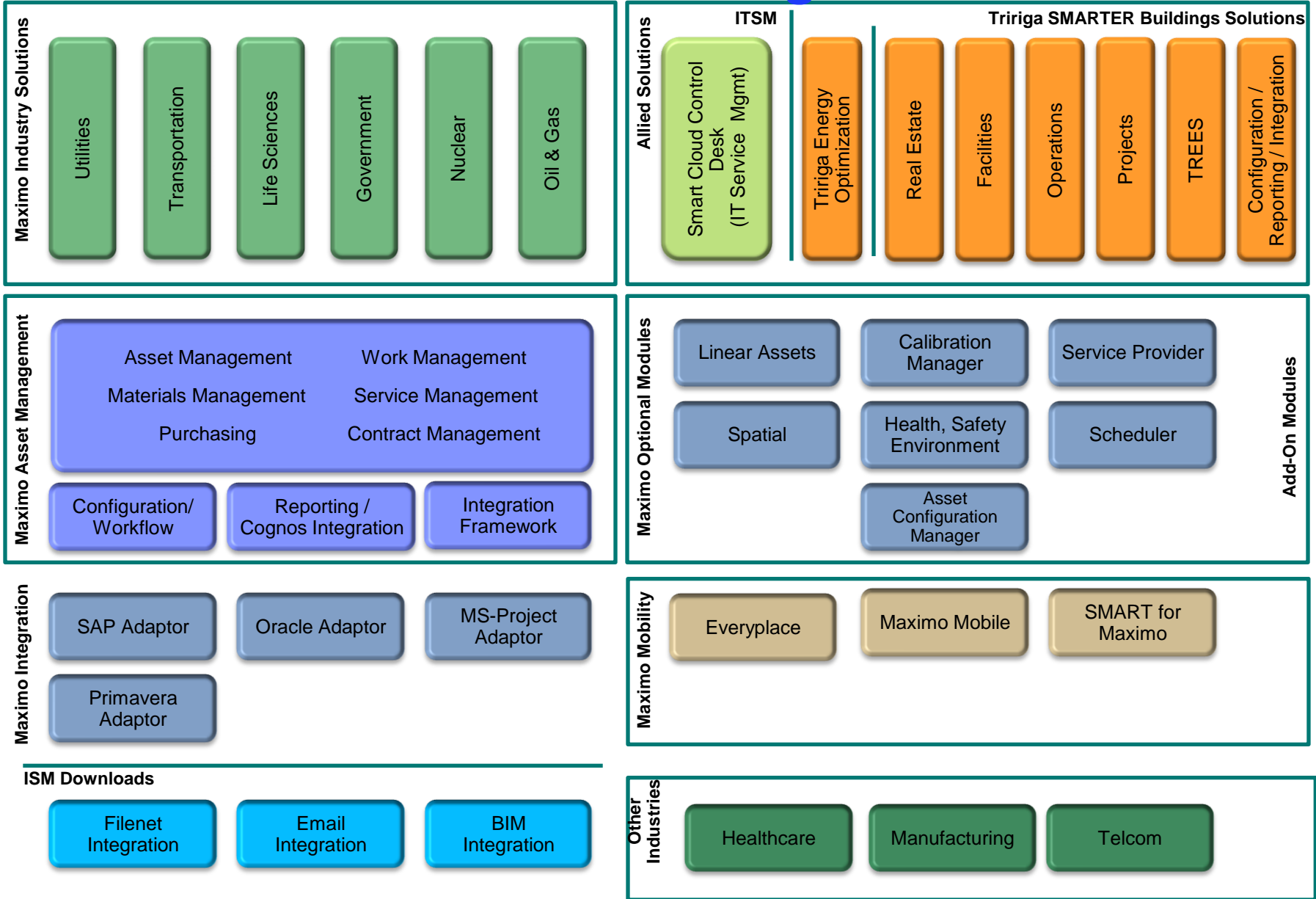
Long Term Planning

Manual Mid and Short
Term Planning

Automated Long, Mid and Short
Term Planning



Asset and Facilities Management



IBM



#START014

IBM BusinessConnect

El arte de lo posible

**PALACIO MUNICIPAL
DE CONGRESOS**

Madrid, 20 de noviembre de 2013

Únete a la conversación en #START014



<http://www.start014.com>

¡Inscríbete ahora!



Thank You....

