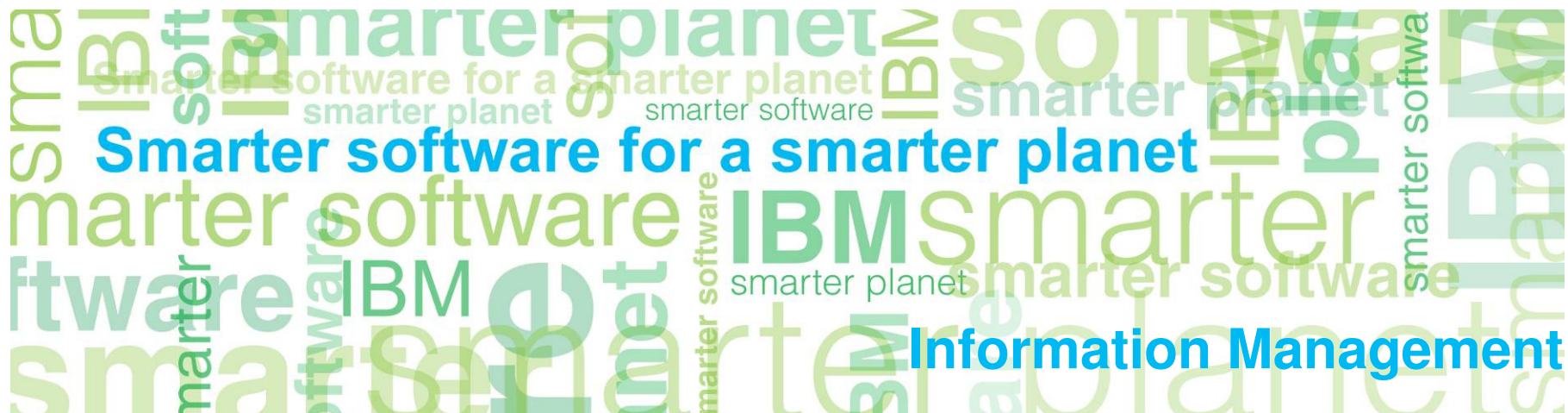


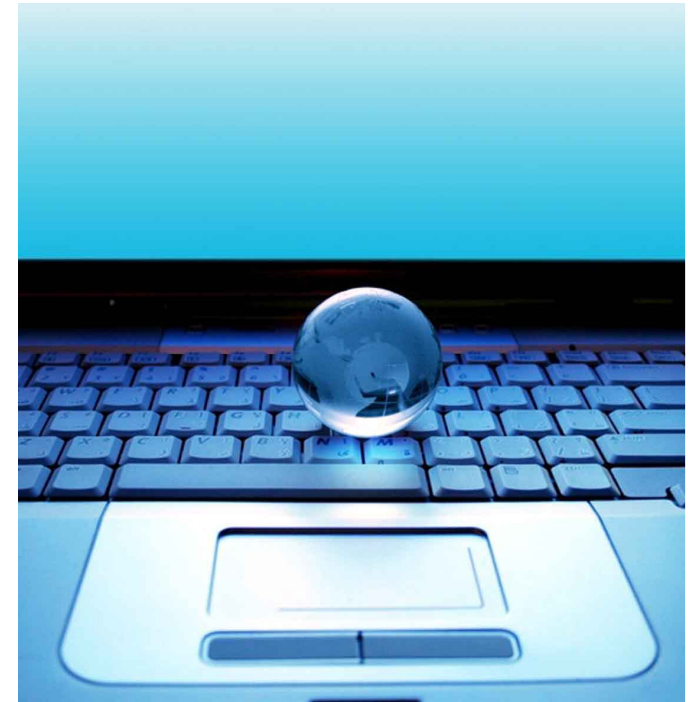


InfoSphere Optim: *Information Lifecycle Management Solutions*



Agenda

- Challenges of Data Management in application development
- Lifecycle Optimization with InfoSphere Optim Solutions
 - *Understand and Define*
 - *Develop and Test*
 - *Optimize, Archive and Access*
 - *Consolidate and Retire*
- Backup slides:
 - Optim Solutions for SAP® Applications
 - Common features of InfoSphere Optim Solutions



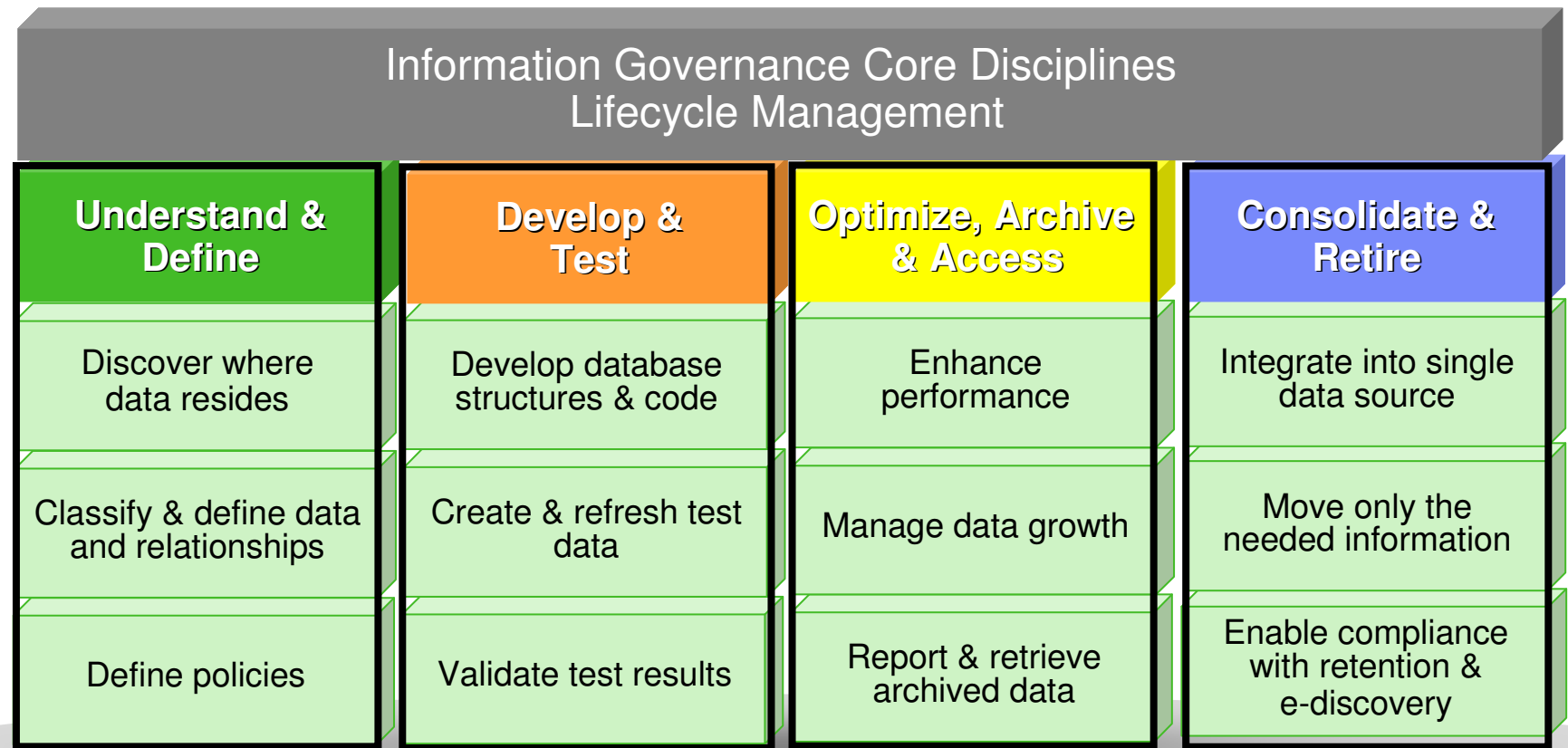
Challenges of poor data management in enterprise applications

- **New application functionality to meet business needs is not deployed on schedule**
 - No understanding of relationships between data objects repeatedly delays projects
 - Greater data volumes take longer to clone, test, validate and deploy which results in longer test cycles
- **Unintentional disclosure of confidential data kept in test/development environments**
- **Application defects are discovered after deployment**
 - Costs to resolve defects in production can be 10 – 100 times greater than those caught in the development environment
- **Increased operational and infrastructure costs impact IT budget**
 - Cloning databases requires more storage hardware
 - Larger databases impact staff productivity and could mean additional license costs

Forrester estimates that 75% of data stored in large OLTP applications is typically inactive.

Source: Noel Yuhanna, Forrester Research Inc.,
Your Enterprise Data Archiving Strategy, February 2011

Requirements for managing data across its lifecycle



Developers Team
Application Owners
& Data Stewards
DBA & QA Teams

*"I need to consolidate & integrate enterprise standards, systems & data
 need to identify bottlenecks in system performance.
 Archived to understand what data exists and how its related in order to define
 the policies and standards to manage that information as it ages. "
 "I need a method to tune application performance and archive aged data.
 application business demands access to it on-demand."*

Slide 4

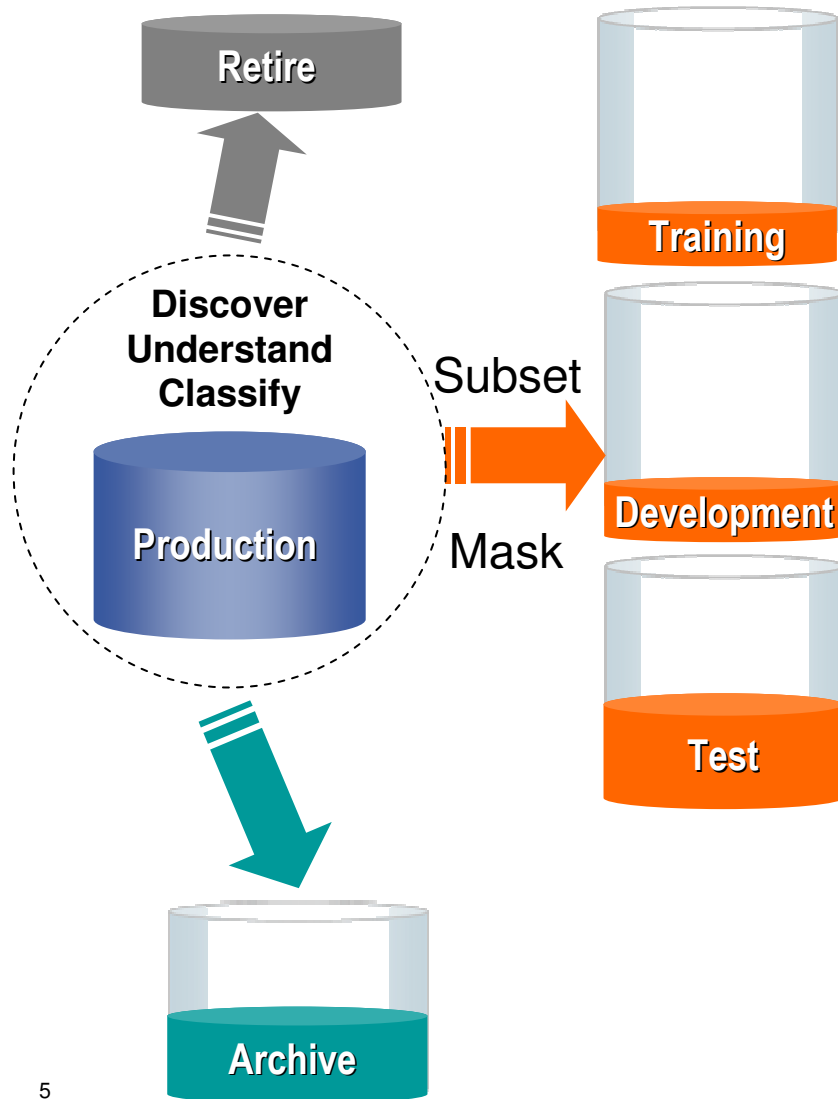
A2

Remove Access

Author; 23/11/2010

IBM InfoSphere Optim solutions

Managing data throughout its lifecycle in heterogeneous environments



Discover

- Speed understanding and project time through relationship discovery within and across data sources
- Understand sensitive data to protect and secure it

Test Data Management

- Easily refresh & maintain right sized non-production environments, while reducing storage costs
- Improve application quality and deploy new functionality more quickly

Data Privacy

- Protect sensitive information from misuse & fraud
- Prevent data breaches and associated fines

Data Growth Management

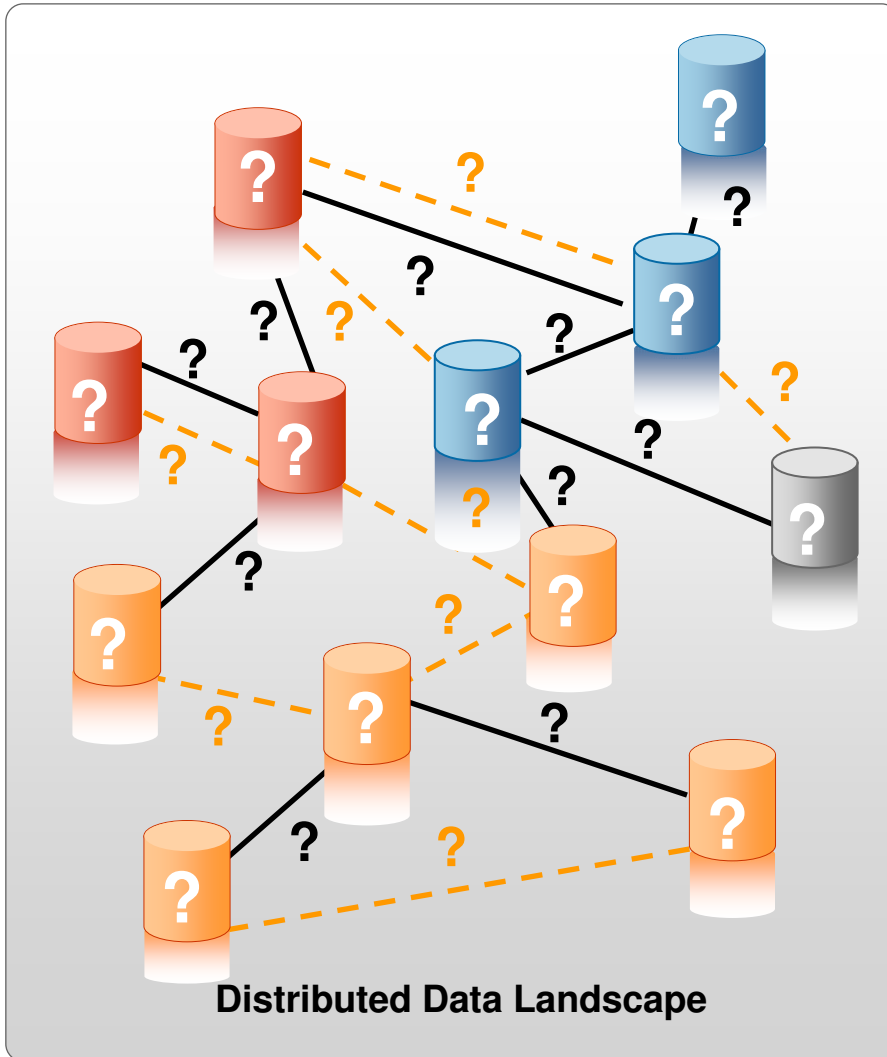
- Reduce hardware, storage & maintenance costs
- Streamline application upgrades and improve application performance

Application Retirement

- Safely retire legacy & redundant applications while retaining the data
- Ensure application-independent access to archive data

You can't govern what you don't understand

Understand & Define



- **Data can be distributed over multiple applications, databases and platforms**
 - Where are those databases located?
- **Complex, poorly documented data relationships**
 - Which data is sensitive, and which can be shared?
 - Whole and partial sensitive data elements can be found in hundreds of tables and fields
- **Data relationships not understood because:**
 - Corporate memory is poor
 - Documentation is poor or nonexistent
 - Logical relationships (enforced through application logic or business rules) are hidden

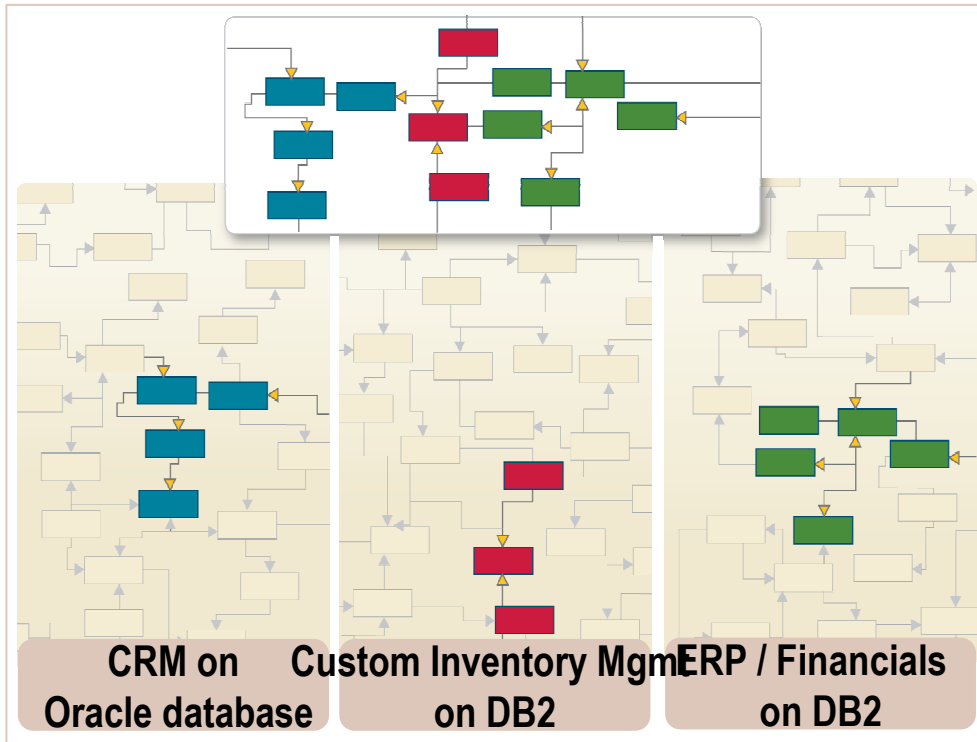
Understand & Define

IBM InfoSphere Discovery



Discovery

Accelerate project deployment by automating discovery of your distributed data landscape



Requirements

- Define business objects for archival and test data applications
- Discover data transformation rules and heterogeneous relationships
- Identify hidden sensitive data for privacy

Benefits

- Automation of manual activities accelerates time to value
- Business insight into data relationships reduces project risk
- Provides consistency across information agenda projects

The impact of inefficient test practices Challenges in Test Data Management

Develop &
Test



“We did not want to create ‘fake’ or unrealistic test data. All test data had to be created and set up manually. So it would take us a month to setup test data for 30 or more accounts.”

-- Large US Healthcare Insurer



“We needed to improve efficiencies in development and testing environments, as well as our production environments. We can create realistic test environments that use much less disk space than we would by cloning the production database.”

-- Allianz Seguros

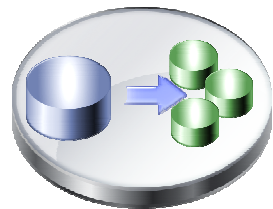


“Our staff wanted to implement more efficient and cost-effective testing processes that would shorten the time for creating and managing multiple test environments.”

-- Cetelem

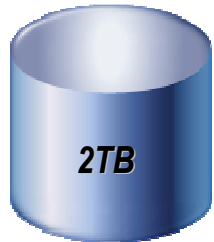
IBM InfoSphere Optim Test Data Management

Develop & Test



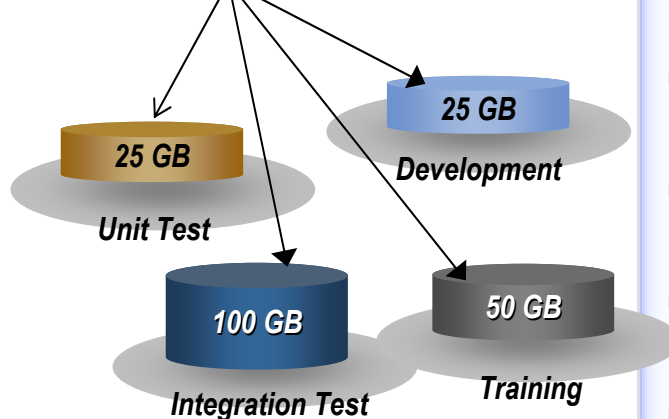
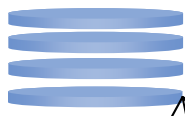
Test Data Management

Create "right-size" production-like environments for application testing



Production or Production Clone

Subset & Mask



Requirements

- Create referentially intact, "right-sized" test databases
- Automate test result comparisons to identify hidden errors
- Protect confidential data used in test, training & development
- Shorten iterative testing cycles and accelerate time to market

Benefits

- Deploy new functionality more quickly and with improved quality
- Easily refresh & maintain test environments
- Protect sensitive information from misuse & fraud with data masking
- Reduce storage and operational costs

InfoSphere Optim TDM supports data on distributed platforms (LUW) and z/OS.

Out-of-the-box subset support for packaged applications ERP/CRM solutions as well as :



IBM InfoSphere Optim Data Privacy Solution

Develop & Test



Mask data on demand

De-identify sensitive information with realistic *but fictional* data



Sensitive information is masked with realistic but fictional data

Requirements

- Protect confidential data used in test, training & development systems
- Mask data in applications and reports
- Implement proven data masking techniques
- Support compliance with privacy regulations
- Solution supports custom & packaged ERP applications

Benefits

- Protect sensitive information from misuse and fraud
- Prevent data breaches and associated fines
- Achieve better data governance

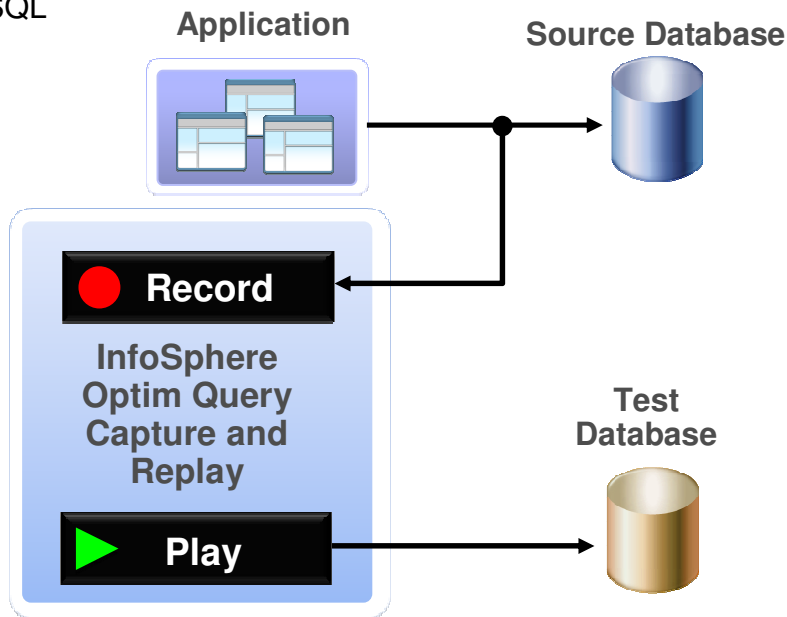
Develop & Test

IBM InfoSphere Optim Query Capture and Replay



Record and replay SQL

Capture production workloads and replay them in testing environments



Requirements

- Minimize unexpected production problems
- Shorten testing cycles
- Develop more realistic database testing scenarios

Benefits

- Identify database problems sooner with validation reports and performance tuning
- Use actual production workloads for testing rather than fabricated scenarios
- Extend quality testing efforts to include the data layer



Challenges of exponential data growth

Optimize, Archive
& Access

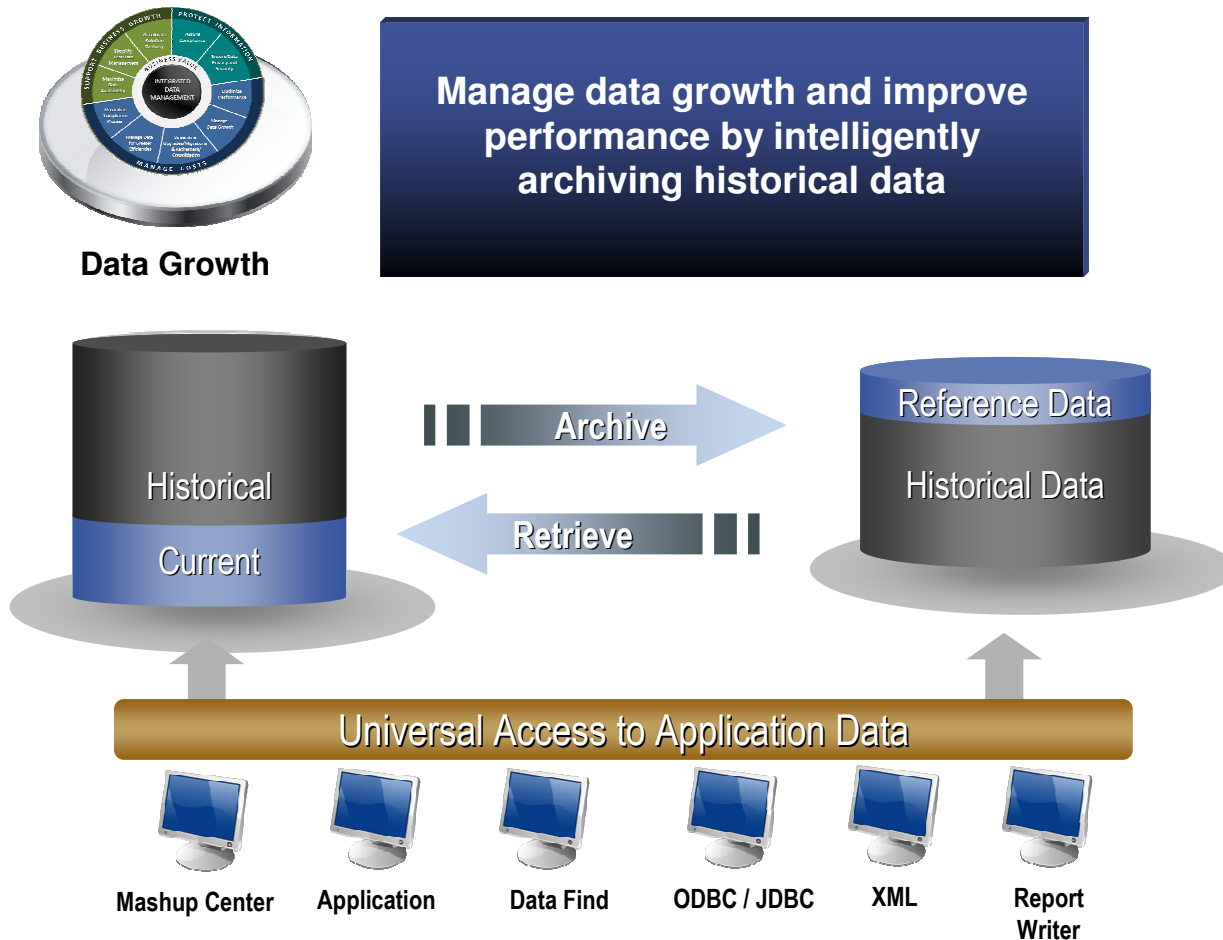
- Missed SLAs and declining customer satisfaction due to eroding or unpredictable application performance
- Transaction & data volume growth drive up infrastructure costs
- Multiple instances of production data – back-up, training, testing – can compound data growth
- Layered applications stack obscures visibility for problem isolation
- Archival processes are complex requiring full business context for e-discovery



Are you controlling your data, or is it controlling you?

IBM InfoSphere Optim Data Growth Solution

Optimize, Archive & Access



Requirements

- Archive, manage and retain application data according to business policies
- Minimize downtime during application upgrades
- Consolidate application portfolio and retire legacy applications

Benefits

- Reduce hardware, storage and maintenance costs
- Streamline application upgrades and improve application performance
- Safely retire legacy & redundant applications while retaining the data

InfoSphere Optim Data Growth supports data on distributed platforms (LUW) and z/OS. Out-of-the-box archiving support for packaged applications available for ERP/CRM solutions:



When it's time to retire or consolidate applications

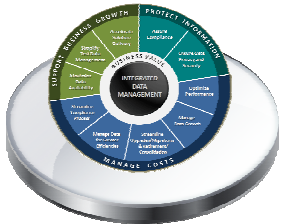
Consolidate &
Retire

- Application portfolio has redundant systems acquired via mergers and acquisitions
- Line of business divested; application is no longer needed
- Legacy technologies not compatible with current IT direction
 - Old database and/or application versions no longer supported by manufacturer
- Required technical skills or application knowledge no longer available
- Budget pressures – do more with less



In almost ALL cases, access to legacy data MUST be retained while the application and database are eliminated

IBM InfoSphere Optim Solution for Application Retirement Consolidate & Retire



Application Retirement

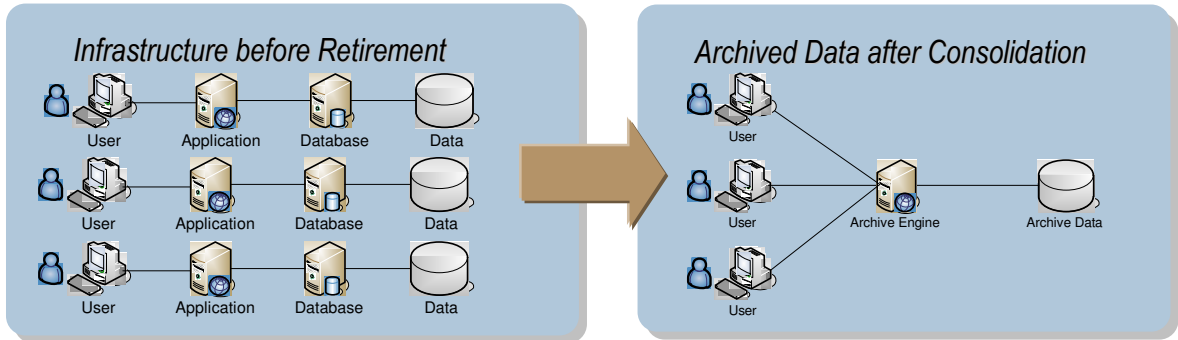
Manage and provide access to application data as part of an application retirement project

Requirements

- Archive, manage and retain application data according to data retention policies
- Provide application independent access to archived data
- Consolidate application portfolio and retire legacy applications

Benefits

- Ensure compliance and access to valuable data
- Safely retire legacy & redundant applications while retaining the data
- Reduce hardware, storage and maintenance costs



Optim for SAP

Challenges Across SAP Application Lifecycle



Manage Lifecycle Events

- Support the complexities of SAP upgrades, support packs & enhancement packs
- Avoiding errors and ensuring successful deployment



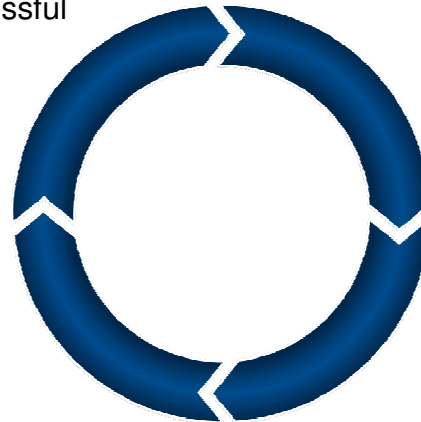
Sustain & Maintain

- Keep up with changing business processes & continuous improvements
- Struggle to manage life cycle project support better



Secure Data

- Ensure SAP data is secure
- Maintain on-going management & governance requirements



Reduce Infrastructure Costs

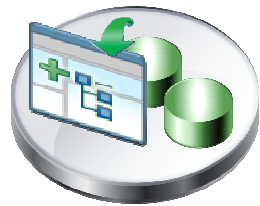
- Organizations need to reduce storage overhead
- Huge costs put into implementing ERP projects
- Costs associated with both production & non-production environments



Consolidate & Synchronize

- Consolidate SAP systems effectively
- Streamline landscape synchronizations

InfoSphere Optim System Analyzer for SAP® Applications



OSA for SAP

SAP Certified

Automatically identify SAP system changes & understand their impact to minimize risk

Recommended Executables To Test							
Type	Name	Program	Usage	Coverage	Custom	Transaction Description	
			Program Description			Appl. Application Description Used?	
	ZRTR_COST_REL_CHECK			1405	4649	Y	Uncheck Costing Relevancy Indicator
		Z_RTR_COST_REL_CHECK	Uncheck Costing Relevancy Indicator				No App area Text please fix Y
		REPS	LMEWQF12			SAPKH60015	3
		REPS	LMEWQF10			SAPKH60013	3
		FUIC	CNIF_MAT_SET_AUFLAG			SAPKH60015	5
		REPS	LPSSV_CHECKKF03			SAPKH60014	5
		REPS	LCNIF_MATF14			SAPKH60013	4
	ZRTR_STEELPLUS			347	4644	Y	Steel Plus CMCSG To SAP ECC FI
		Z_RTR_SP_CMCSG_TO_ECCFI_CO	Steel Plus CMCSG To SAP ECC FI				No App area Text please fix Y
		REPS	LFOKKF01			SAPKGPPD14	4
	ZIRE_BANK_RECON			5799	12	Y	CM C Bank Reconciliation Report
		Z_TRE_BANK_RECON_RPT	Bank Reconciliation Report				No App area Text please fix Y
		REPS	LFAGL_EMU_BALANCEF01			SAPKH60014	4

- Requirements
- Automation to help solve on-going SAP lifecycle activities
 - Detailed impact analysis, precise diagnostics & advanced reporting
 - Pre-built templates to support major SAP lifecycle events and maintenance

- Benefits
- Reduce time, cost, complexity & risk for SAP problem solving
 - Eliminate manual effort of retrieving, comparing & reporting on SAP data
 - Provide sophisticated real-time data to help solve any SAP lifecycle initiative

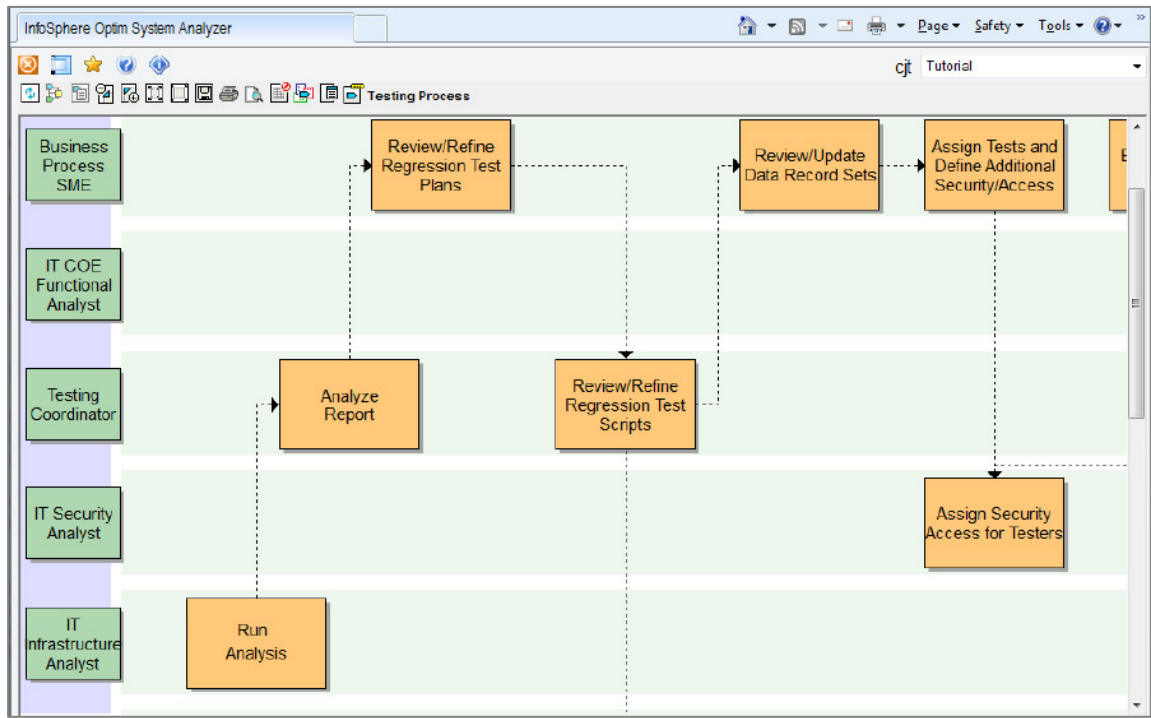
InfoSphere Optim Business Process Analyzer for SAP®



BPA for SAP

SAP Certified

Establish traceability between your SAP business processes and data structures



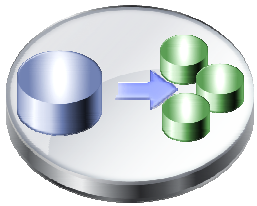
Requirements

- Automatically capture business process from your SAP data structures
- Visualize how changes will impact the business process
- Manage business processes in single- and multi-instance SAP landscapes

Benefits

- Improve collaboration between business user and technical user
- Ensure better visibility of the impact of changes to the SAP business process
- Mitigate risk early in the SAP application lifecycle

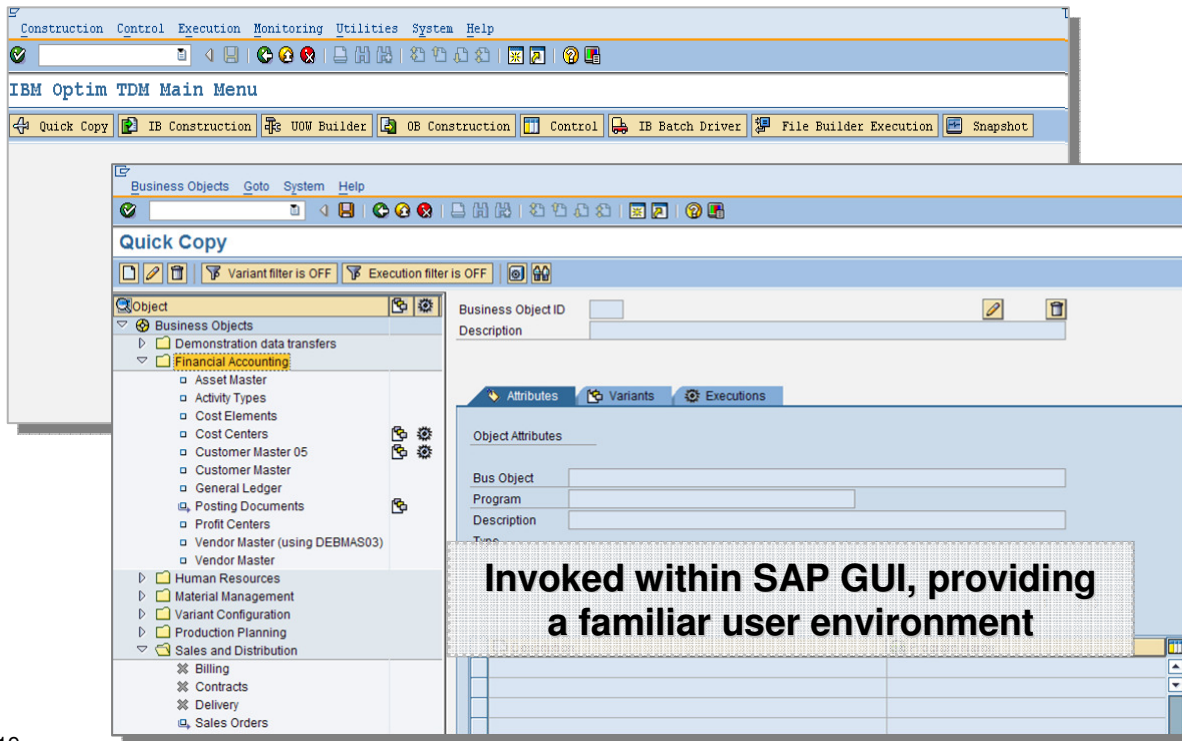
InfoSphere Optim Test Data Management for SAP®



TDM for SAP

**Create secure, “right-sized”,
real-world SAP data scenarios
to improve the quality of
development, testing & training**

SAP Certified



Requirements

- Creation of targeted subsets for test, development & training environments
- Pre-built business objects & user-defined criteria for extracting & masking data
- De-identify sensitive data leveraging predefined or custom data masking techniques

Benefits

- Improve operational efficiencies by shortening iterative testing cycles, reducing time, cost & risk
- Extract data & effectively mask with no client copy downtime or performance degradation
- Prevent data misuse or breaches without impacting testing cycles

SAP and IBM - Partnership That Makes a Difference

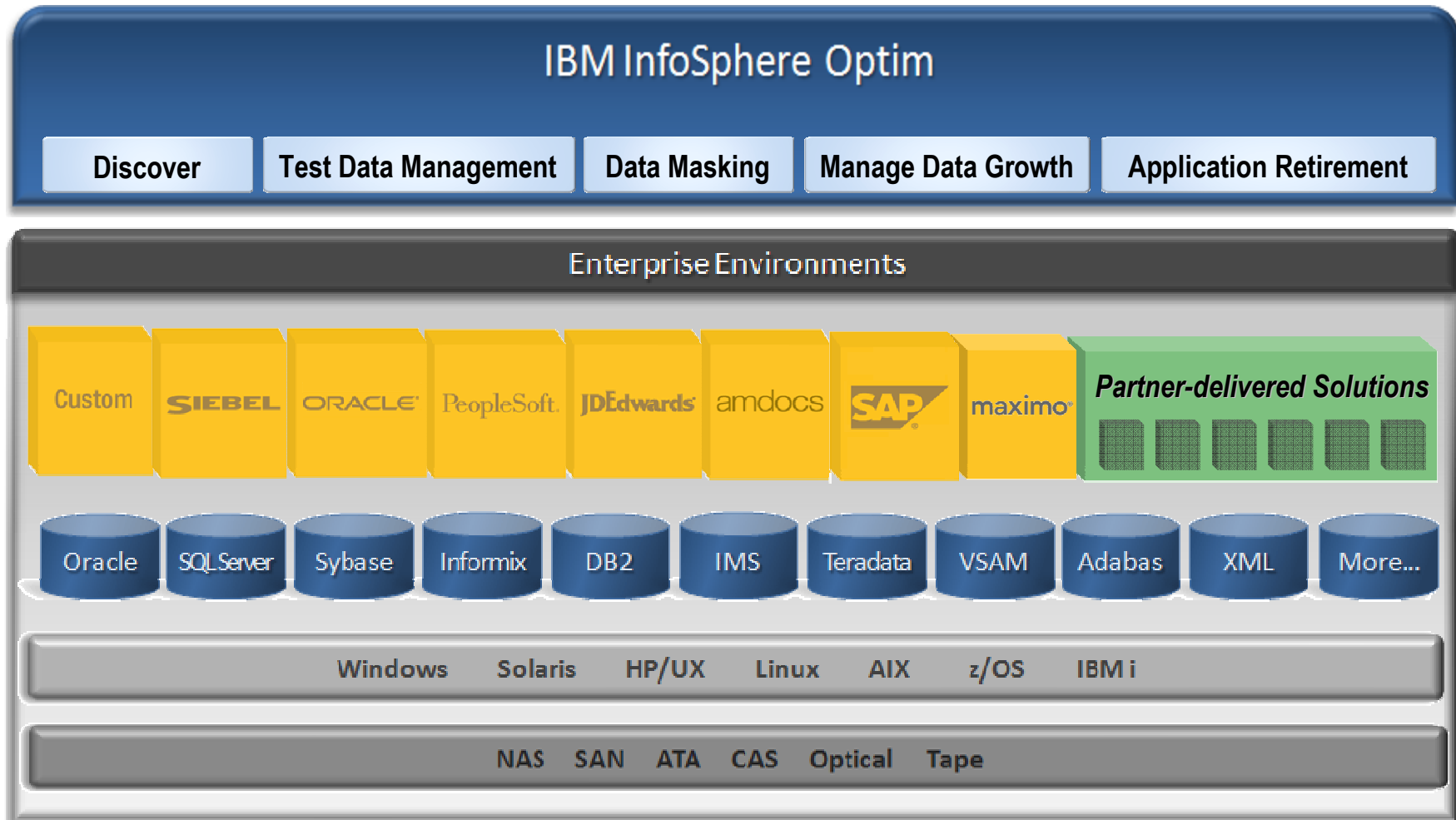


SAP AG Campus, Walldorf, Germany

- IBM: SAP's #1 Business Partner
- IBM: SAP's #1 Global Systems Integrator
- IBM: SAP's #1 Partner for Software Integration
- IBM: One of SAP's Largest Customers
- IBM: SAP's #1 Preferred Database is DB2
- IBM has many SAP global centers of excellence
- Extremely close development cooperation with joint long term planning
- Best integrated services & support

The relationship between IBM and SAP dates back 30 years and continues to be a strong, well-established partnership

IBM InfoSphere Optim supports the heterogeneous enterprise



Single, scalable, interoperable information lifecycle management solution provides a central point to deploy policies to extract, archive, subset, and protect application data records from creation to deletion

Why IBM InfoSphere Optim?

- **Most comprehensive, robust, solution in market**

- Comprehensive discovery and Complete Business Object provides relationally intact data set that can be accessed independent of application and serves as audit ready snap shot of data in time
- Comprehensive data restore capabilities including selective restore and restore directly from compresses archive files
- Comprehensive test data management solution, allowing DBAs, testers and developers to access test data for testing
- Wide array of access methods for archive data - Native application access as well as application independent methods

- **Efficient Archive Data Storage for reduced overall TCO**

- Pioneered compressed archive file format; 7th generation of product using this format
- Also supports XML and database formats

- **Single, Scalable, Enterprise Solution**

- Widest support in terms of databases, operating systems, applications (custom/legacy and packaged), and storage system interfaces
- Addressing mainframe data sources for over 20 years

Why IBM InfoSphere Optim?

▪ **Leading Market position**

- Market leader as defined by IDC (56%) *
- Over 2500+ customers worldwide

▪ **Strong Oracle partnership**

- Oracle Certified Advantage Partner with a strong alliance with Oracle
- Optim is the only solution in market that provides validated solutions for all major Oracle applications – Siebel, E-Business, PeopleSoft and JD Edwards
- IBM GBS is world's largest provider of services for Oracle applications

▪ **Power of IBM behind the solution**

- InfoSphere Optim is key component of IBM strategy for Information Governance
- World-class software support
- Integrations/synergies with other IBM products for data relationship discovery, archiving, content management, data transformation, data viewing, etc.

* Source: IDC - Worldwide Database Development & Management Tools 2009 Vendor & Segment Analysis, December 2010

Thank
YOU