



Change & Configuration Management Where we are.... Where we are going...

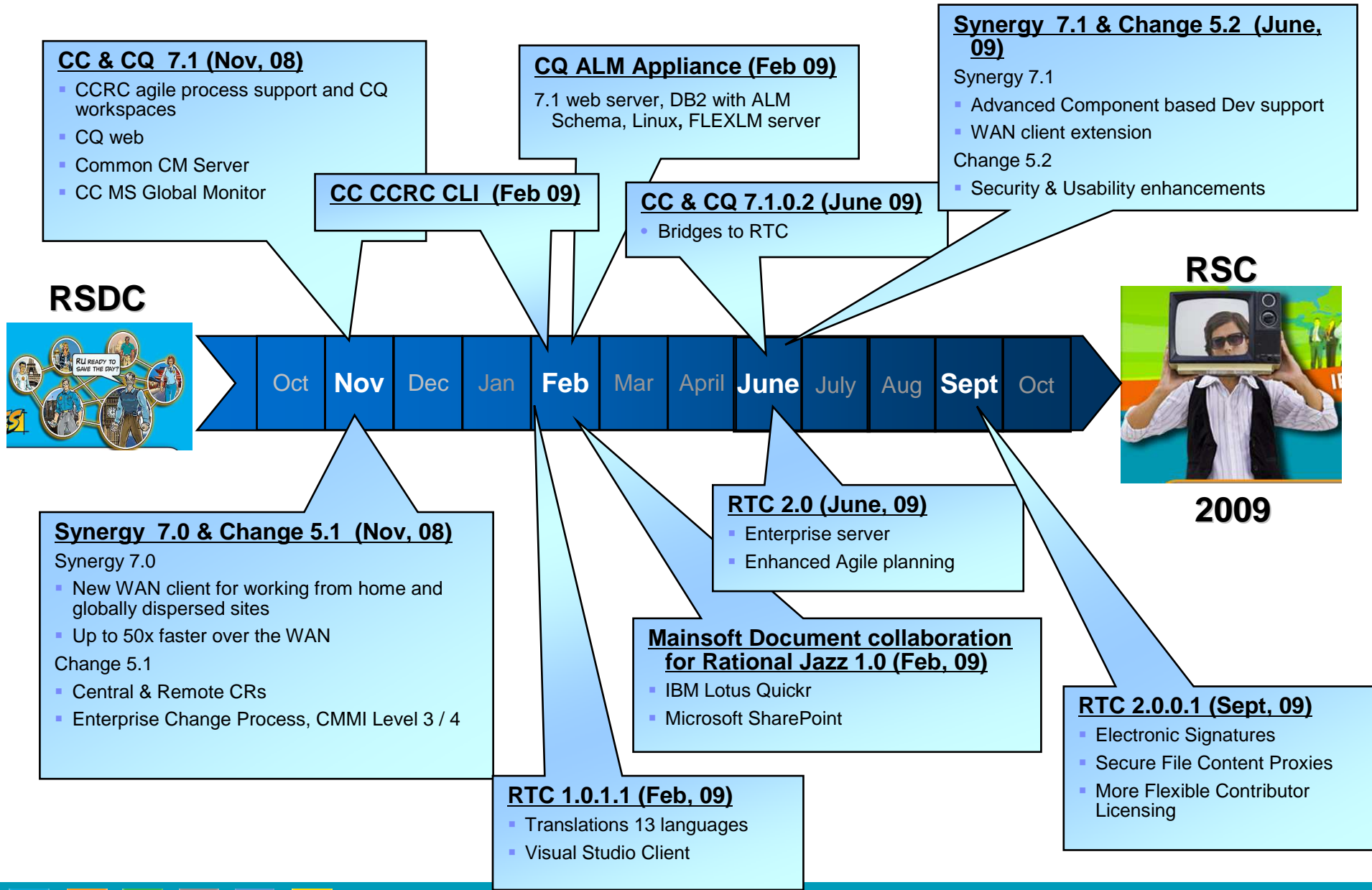
Robert Kennedy
Market Manager
kennedyr@us.ibm.com

Rational. software

Agenda

- Let's Catch up
 - ▶ Rational Team Concert 1.0.0.1, 2.0, 2.0.0.1
 - ▶ ClearCase and ClearQuest 7.1, 7.1.0.2
 - ▶ Synergy 7.0, Synergy 7.1, Change 5.1, Change 5.2
- Looking ahead
 - ▶ Future of Rational platform
 - ▶ Integration Strategy
 - ▶ User Interface Strategy
 - ▶ ClearCase and ClearQuest product directions
 - ▶ Synergy and Change product directions
 - ▶ Rational Team Concert product directions
- Partners' solutions





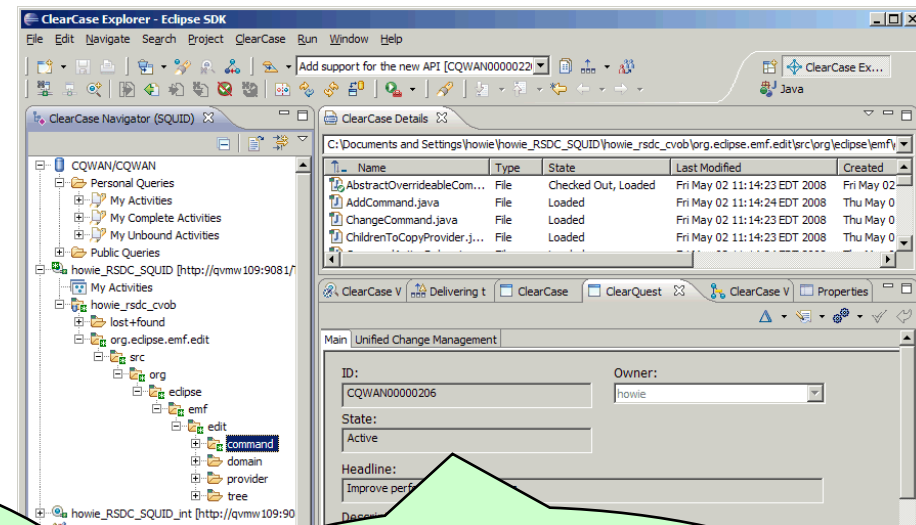
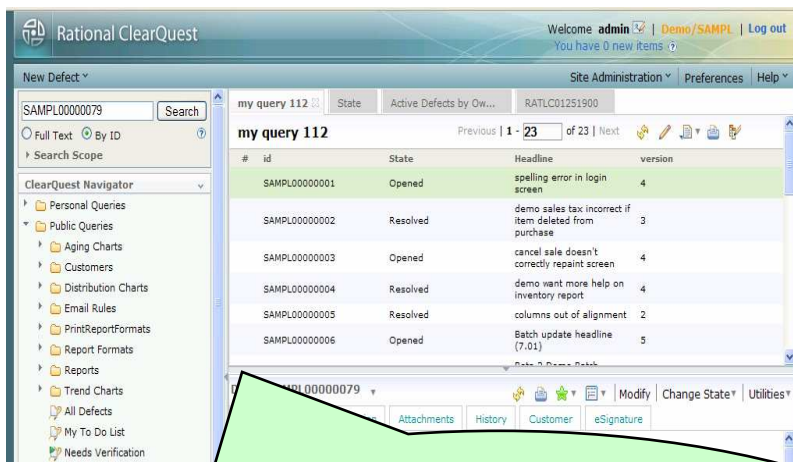
Released

Nov 2008

ClearCase and ClearQuest 7.1

Rational ClearQuest Web
for the **Team**

& ClearQuest
Rational ClearCase Remote Client (CCRC)
for the **Developer**



"The new ClearQuest web 2.0 interface is familiar, dynamic and state-of-the-art. With most of our company using ClearQuest - including developers, human resources, legal and IT - the ease of use can potentially lead to huge productivity gains."

-- Mike Warfield, Mentor Graphics

"...Siemens is able to easily get remote development sites up and running in a fraction of the time utilizing the new ClearCase Remote Client (CCRC) interface. ..."

-- Rainer Ersch, Siemens AG

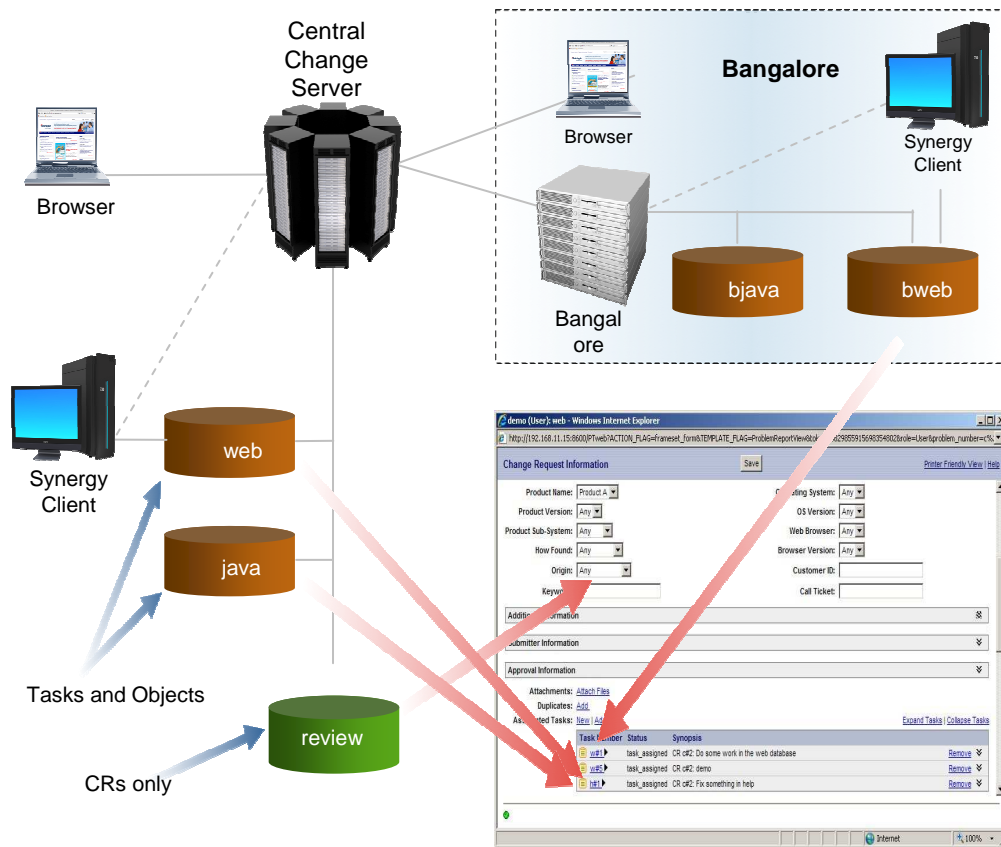


Released

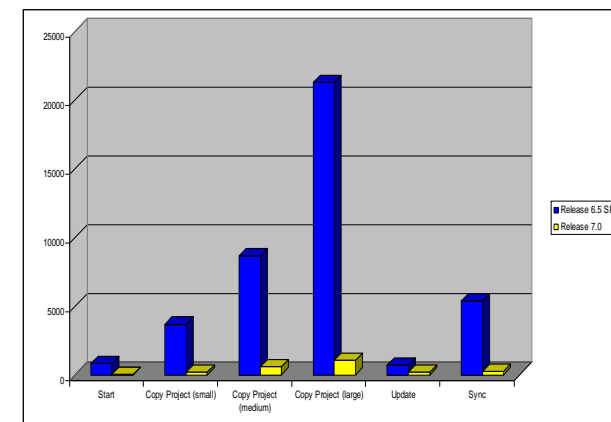
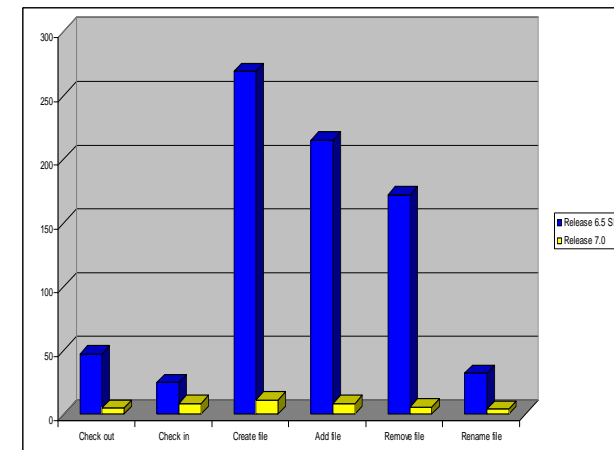
Nov 2008

Rational Synergy 7.0 and Change 5.1 – *the architecture evolves*

Centralized Change Management



Configuration Management working over the WAN



Rational Synergy 7.0 and Change 5.1 Licensing

- Synergy Licenses have been simplified and have evolved to
 - ▶ Include DCM capabilities – all customers under maintenance are entitled to access DCM capabilities
 - ▶ Have only one single type of Floating license: “User Floating”: this replaces “Single Site”, “Multi Site”, “Continental”, “Global”

- Change Licenses have been simplified and have evolved to
 - ▶ Include DCM capabilities – all customers under maintenance are entitled to access DCM capabilities

- Easier administration – full flexibility in product usage

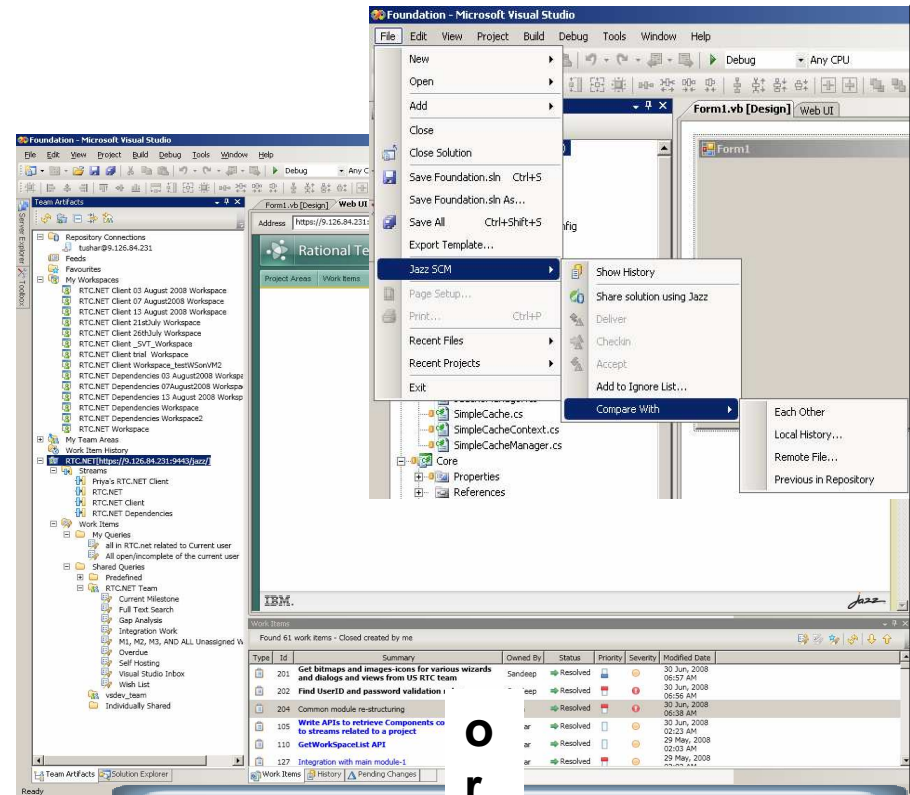


Team Concert Visual Studio Client

Released
Feb 2009



- Enables you to work *within your Microsoft Environment* for maximum efficiency
 - ✓ Access RTC capabilities like join project, create work items, run queries, compare versions, view pending changes...
- Manage Build from *within Visual Studio*
 - ✓ Use MS-Build command line builds with Team Concert continuous Integration build engine
 - ✓ Link command line MS-Builds to the Team Concert build toolkit and store results in the Team Concert repository
- Collaborate across teams



Customer Success: CareMedic



CareMedic Systems, Inc. provides proactive financial management and services for more than 1,500 hospitals and provider organizations across the United States.

Challenges

- Due to company acquisitions, software assets were stored in multiple Microsoft Visual Source Safe repositories, making it difficult to maintain centralized asset management
- It was difficult to coordinate changes across a geographically distributed development environment
- Multiple build processes impacted the company's ability to deliver timely releases
- Disconnected development tools made it difficult to manage developer activities and collect measures

Rational Team Concert Solution

- Centralize management of software assets
- Improve developer productivity while supporting agile process and [Microsoft Visual Studio](#)
- Support distributed teams currently located in Florida, Georgia and Indiana
- Reduce time to deliver code
- Improve software quality
- Improve management insight and flexibility

www.caremedic.com



Released
Feb 2009

Mainssoft Document Collaboration for Rational Jazz

Collaboration in context

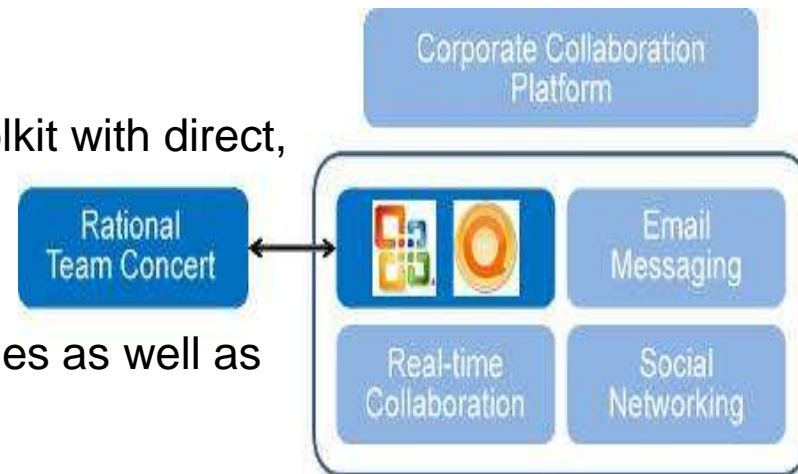
- Extend development teams' collaboration toolkit with direct, per-project document linkages

End-to-end governance

- Improve the transparency of software deliveries as well as automate and enforce project governance

Business stakeholders participate in software deliveries

- Use their preferred collaboration tools
 - Microsoft or
 - Lotus



**Connect
Rational Team Concert with
Microsoft SharePoint or
Lotus Quickr**

Rational Change 5.2

- Ready-to-use schemas, processes and procedures embody the “best practices” expertise of IBM change management professionals and thousands of worldwide users
 - ▶ Enterprise Change Process, an industry proven lifecycle, is now a standard lifecycle
 - ▶ Enterprise Change Process, advanced customization features now become out of the box capabilities
 - ▶ Powerful reporting includes CMMI level 4 metrics for Phase Containment and Phase Screening
- Security Enhancements allow organizations to open a Change installation to the outside world for subcontractors or suppliers without having to worry about security issues
 - ▶ Folder security for Queries, Reports and Formats
- Usability and Performance improvements facilitate end user acceptance



Released

June 2009

Rational Synergy 7.1

- **Unify global teams on a central Change, Configuration and Release Management platform through enhanced Web Mode support**
 - ▶ Link Based Work Area
 - ▶ Extended CLI commands
 - ▶ CCM server administration improvements
 - ▶ User-based password change
- **Improve support for Component Based Development processes for complex application development**
 - ▶ Improved workflow across teams developing, sharing, reusing, modifying components
 - ▶ Improved addition and management of sub components
- **Improve support for baselines that include components with different release values**



Customer Success: Merge Healthcare

Smarter products rely on global collaboration

What's smart?

- Provides medical professionals access to complex medical images on mobile devices
- Helps facilitate prompt access to medical imaging data – anytime or anywhere*

Smarter business outcomes

- Reduced hospital operations costs
- Reliable, secure, scalable delivery of medical images and reports

How Rational enables smarter products

- Collaboration across globally distributed development teams
- Change management across the end-to-end software lifecycle

Think Rational

One of many ways Rational enables a smarter planet.

“We rely on Synergy and Change to manage the complexity of the software and to ensure that our global development teams operate as one, for the best result to our customers. This software from IBM is part of our livelihood; it's our DNA.”

**Product not yet released*



Released

June 2009

Rational Team Concert 2.0

▪ Deliver Global Enterprise Readiness

- ▶ Enhanced Scalability and Extensibility
- ▶ Enhanced Security

▪ Enhanced agile planning

- ▶ New Taskboards and enhanced SCRUM
- ▶ Release planning support
- ▶ Plan risk assessment
- ▶ Web access to iteration plan editing and builds

▪ Support Collaborative ALM

- ▶ Tighter RQM and RRC integrations
- ▶ Cross repository and cross project dashboards

▪ Support growth of a vibrant Ecosystem

- ▶ Documented APIs for the RTC SDK, OSLC

▪ Connectors to your existing environments

- ▶ ClearCase/Work Item Bridge
- ▶ ClearQuest/Work item Bridge
- ▶ Importers for data migration

▪ Many other Enhancements including

- ▶ SCM: File Locking
- ▶ Query Filter improvements
- ▶ Web based Build Management
- ▶ Backlog plan mode
- ▶ Enhanced Visual Studio IDE : Jazz Build Support

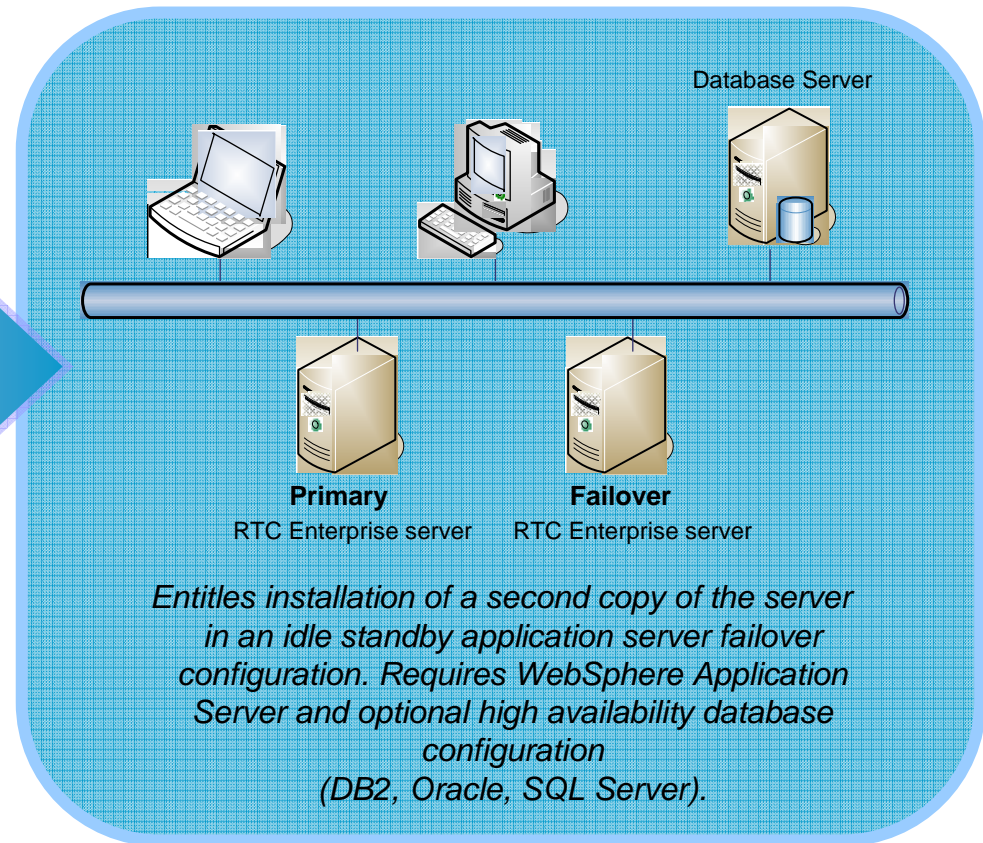


Released
June 2009

Team Concert Enterprise Server 2.0

Consolidate and lower TCO by deploying a centralized, consumable, infrastructure

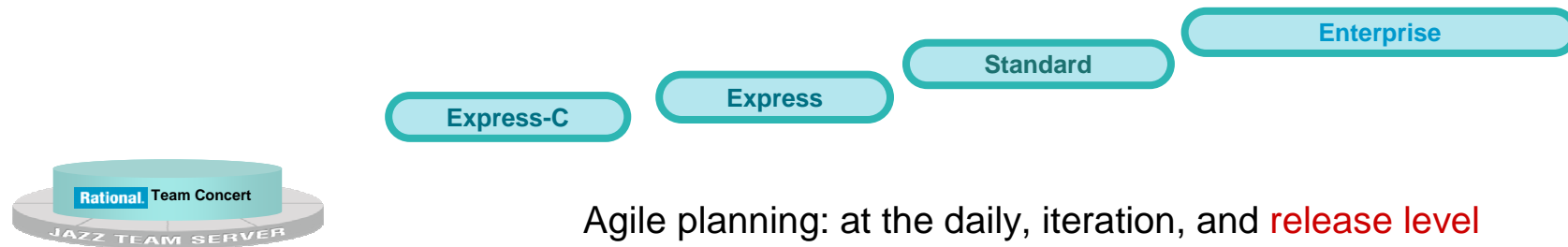
- Thousands of users
 - Millions of files and work items
 - Unlimited file size
 - Hundreds of builds
 - Basic High Availability (failover)
-
- New 64-bit server platforms
 - New hardware platform support
 - ▶ IBM System p



[More details on Jazz.net](http://www.ibm.com/jazz)



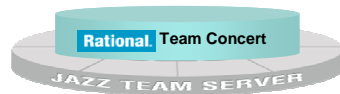
Team Concert Server Editions



All Editions offer:

- Agile planning: at the daily, iteration, and **release level**
- SCM: Stream and component based
- Builds: With Continuous Integration
- Work items **with custom attributes**, discussions and approvals
- Customizable Process Templates
- Project Milestone Tracking and Status
- LDAP authentication
- Subversion Integration Bridge
- Role-based process permissions**
- Project level permissions**
- Cross repository dashboards**

Team Concert Server Editions



	Express-C	Express	Standard	Enterprise
	Small Teams <ul style="list-style-type: none"> • Quick Start • Collaborative ALM • Open source servers 	Mid Sized Teams <ul style="list-style-type: none"> • Project Dashboards • Collaborative ALM • Commercial Middleware 	Corporate Teams <ul style="list-style-type: none"> • Customizable workflow • Advanced Reporting • Departmental Scaling 	Enterprise Teams <ul style="list-style-type: none"> • Customizable Workflow • Advanced Reporting • High Availability • Unrestricted scaling based on hardware
Maximum developers/contributors	10 / unrestricted	50 / unrestricted	250 / unrestricted	Unrestricted / unrestricted
Database and Application Server	Derby, Tomcat	DB2, Tomcat (SQLServer, Oracle, WebSphere)	DB2, Tomcat (SQLServer, Oracle, WebSphere)	DB2, Tomcat (SQLServer, Oracle, WebSphere)
Customizable Dashboard Mashups	1 per project	1 per project	unlimited project, team, and personal dashboards	unlimited project, team, and personal dashboards
Advanced Reports and Customization			✓	✓
Customizable work item workflow			✓	✓
Plan risk assessment			✓	✓
CC/CQ Connectors and Bridges			✓	✓
Floating Licenses Available			✓	✓
LDAP import / synchronize			✓	✓
HTTP proxy support			✓	✓
High Availability				✓*

ClearCase and ClearQuest 7.1.0.2

Released
June 2009

Rational. ClearCase

- **CMServer for CCRC**
 - ▶ Load balancing and failover support
 - ▶ Administrator Web UI
- **CCRC**
 - ▶ Workspace loads and updates 2X improvement
 - ▶ Deliver Baseline Support
 - ▶ MultiSite Mastership Management support

Rational. ClearQuest

- **Improve collaboration with:**
 - ▶ Jazz Work Item Bridge
 - ▶ Jazz Dashboards

Rational. ClearCase for z/OS

- **Improved capabilities with:**
 - ▶ Impact analysis for COBOL and PL/I Builds from TSO Client
 - ▶ Allow install of z/OS Extensions load module libraries to Link Pack Area (LPA)
 - ▶ Parameterized Build Support for RDz client
- **Rights to Use RTC 2.0 in a limited manner for ClearQuest Customers**
 - ▶ PUTS, Change Management License Files & Keys included with CQ v7.1.0.2



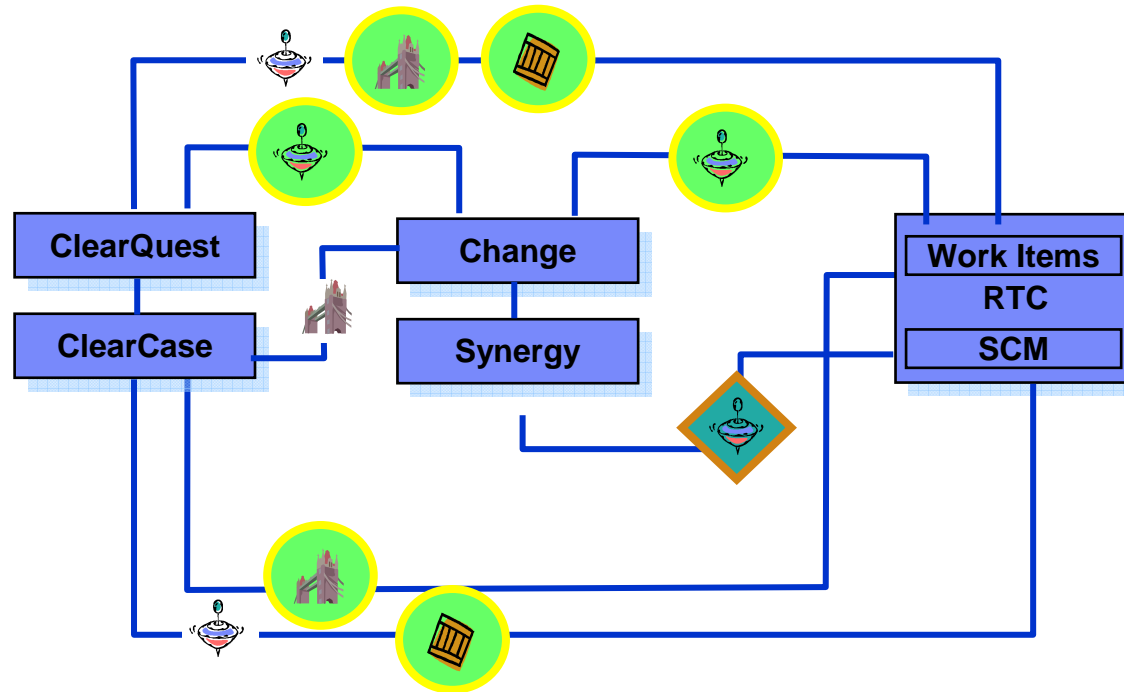
Team Concert 2.0.0.1

- **Enterprise Teams**
 - ▶ SCM performance and scalability with a secure file content proxy
 - ▶ Electronic Signatures
 - ▶ WAS enablement
- **Visual Studio Enhancements**
 - ▶ Event and RSS feed reader in the Visual Studio IDE
 - ▶ Planning from within Visual Studio
- **Agile Development**
 - ▶ SCRUM Enhancements / Reporting
- **Extensibility**
 - ▶ Use any diff tool (for example, "Beyond Compare")
 - ▶ Git scm bridge
- **Selling Team Concert – New “on-ramp” options**
 - ▶ Agile on-ramp to Team Concert
 - ▶ Express-C as a sales feeder



Our Connectors Strategy

Working in Harmony

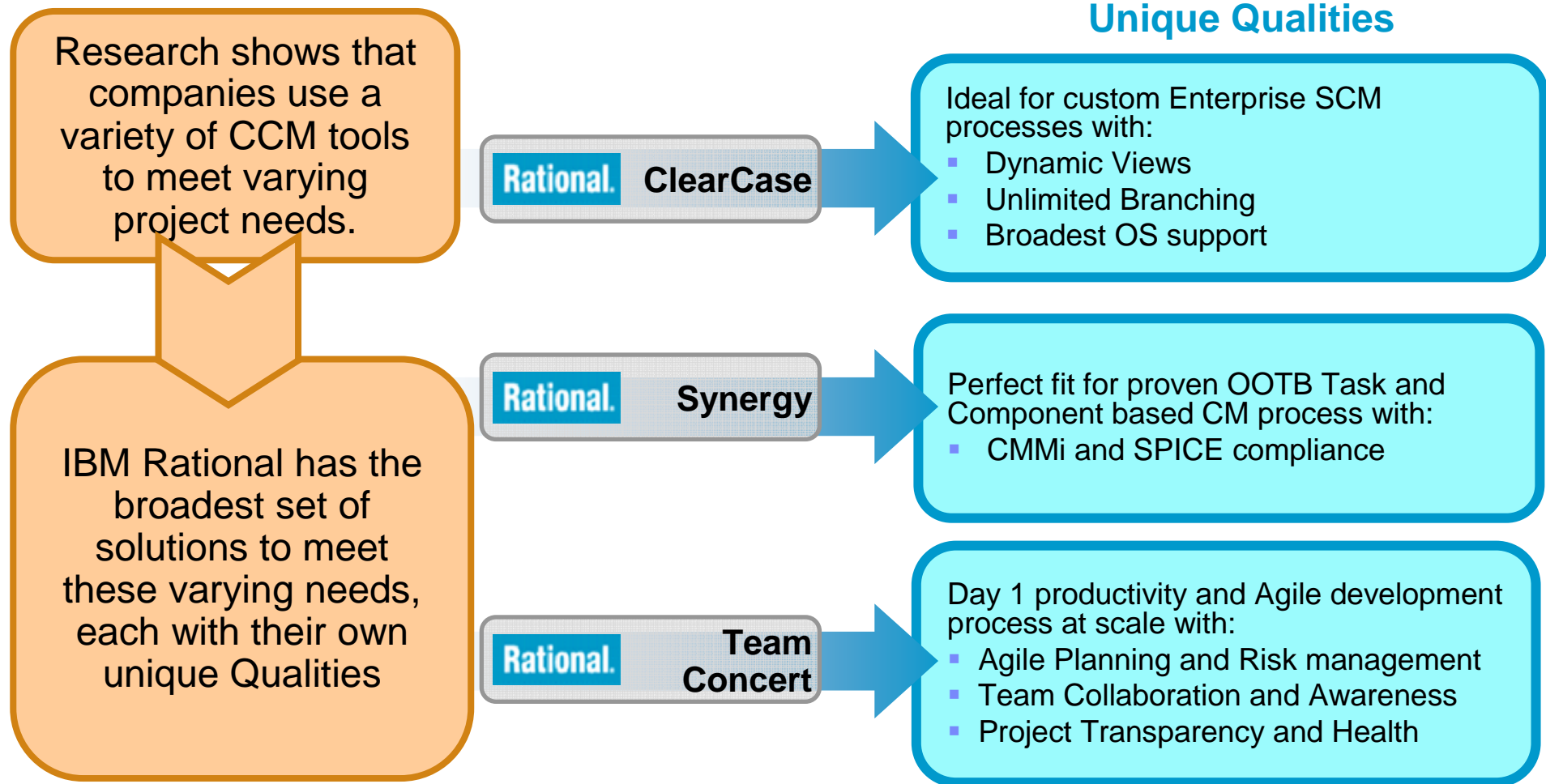


Type	Icon	Description	Status	Icon	Description
Synchronizer		bi-directional replication of data	na		Existing
Bridge		Traceability connections			New
Importer		copy of data			Planned

Looking ahead

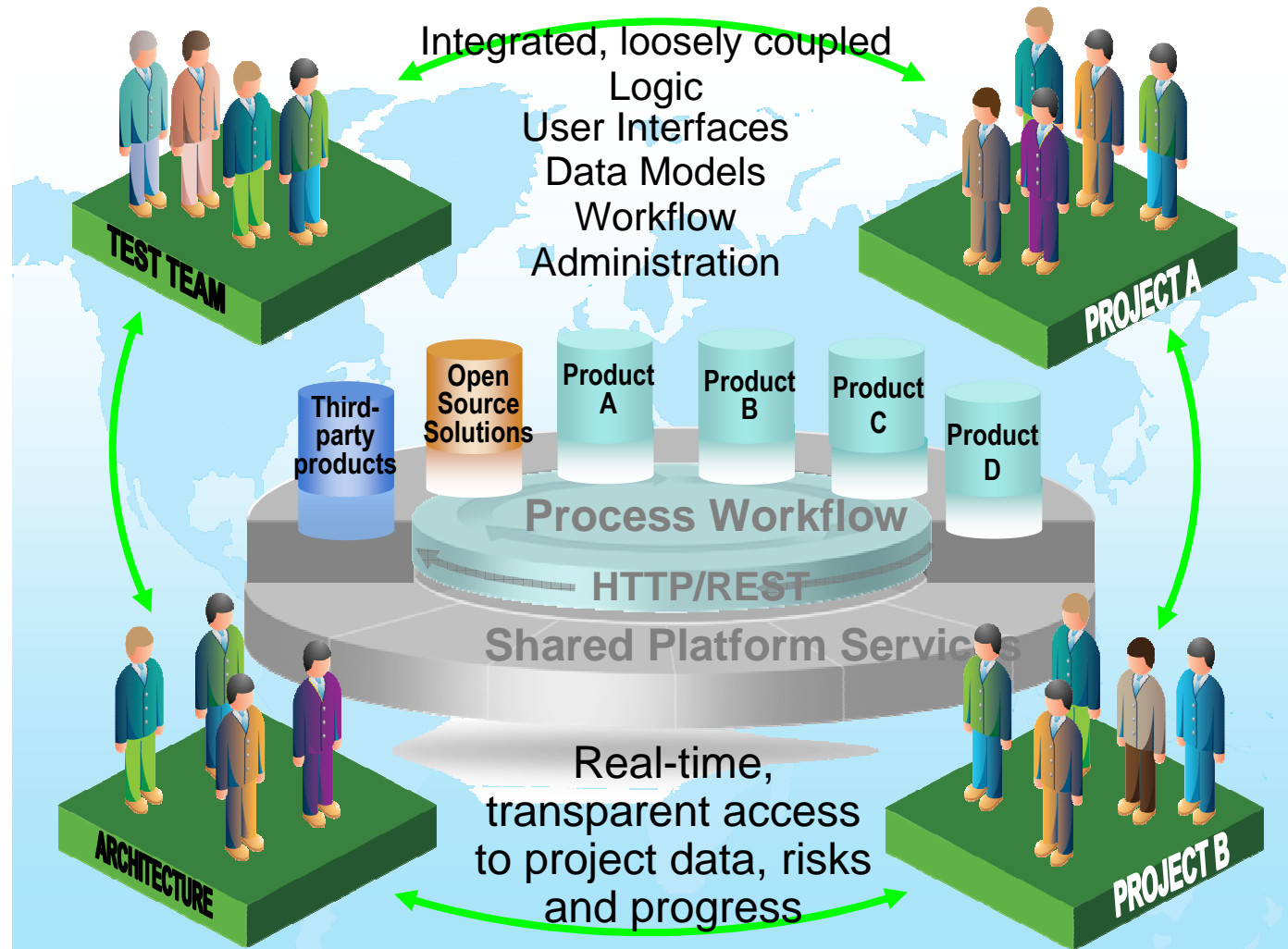


Configuration Management Unique Qualities



Rational's collaborative ALM solution...

... is based on an open platform that can uniquely leverage customers' existing investments in IBM, open source and competitor products



Open Services for Lifecycle Collaboration

Simplifying collaboration across the software delivery lifecycle



**Open Services
for Lifecycle
Collaboration**

Open interfaces. Open possibilities.

An industry initiative for making it easier to use software delivery tools in combination.

**Announcing
Change Mgt
1.0 Spec!**

Barriers to sharing resources across the software lifecycle

- ▶ Multiple vendors, open source projects, and in-house tools
- ▶ Private vocabularies, formats and stores
- ▶ Entanglement of tools and data

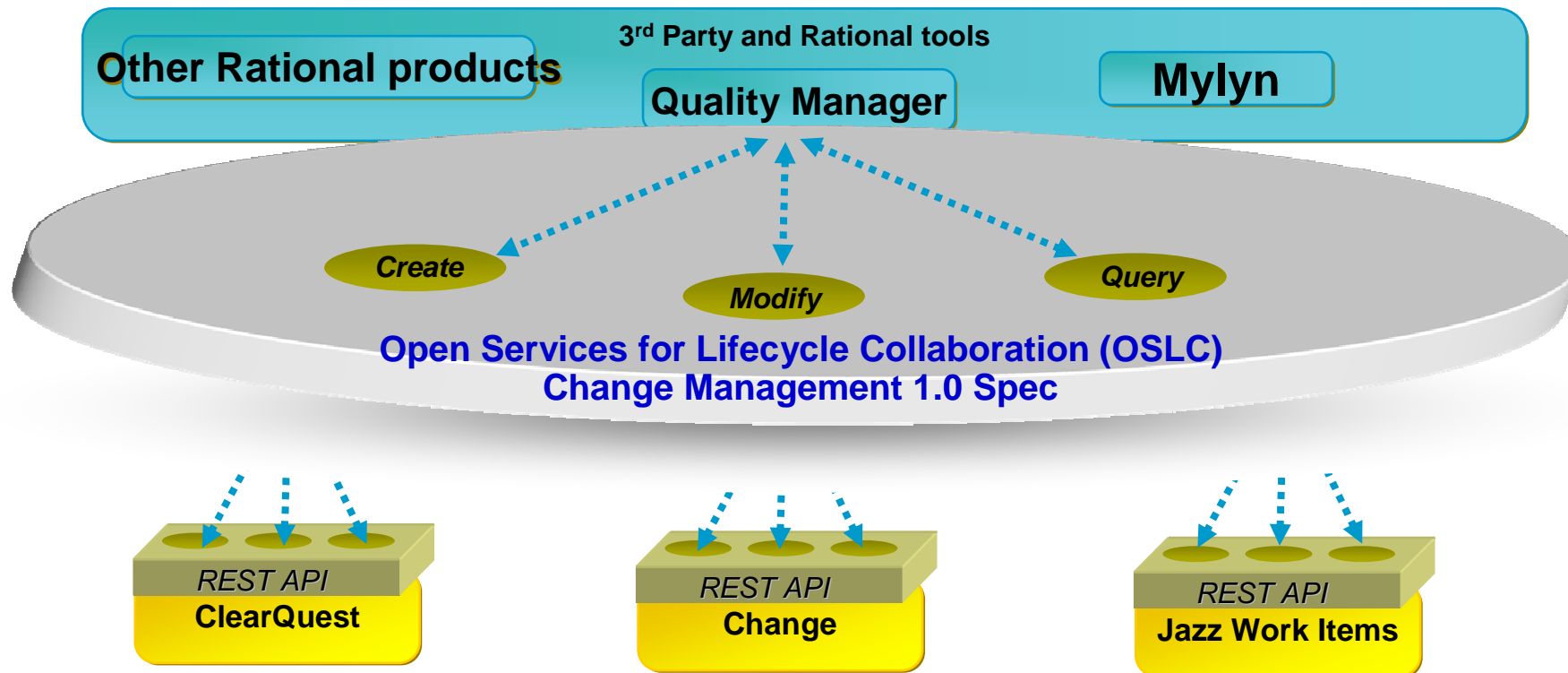
▶ The Open Services initiative is

- **Building** a community of software vendors, open source projects, integrators, and corporate IT teams, operating at **open-services.net**
- **Creating** public specifications of resources and services for sharing the things that software teams rely on, like change requests, test cases, defects, requirements and user stories
- **Delivering** loosely coupled resource formats and services with “just enough” standardization



Integration Strategy

Open Services for Lifecycle Collaboration (OSLC) Change Management 1.0



Visit us at: <http://www.open-services.net>

UI Strategy: Unifying access

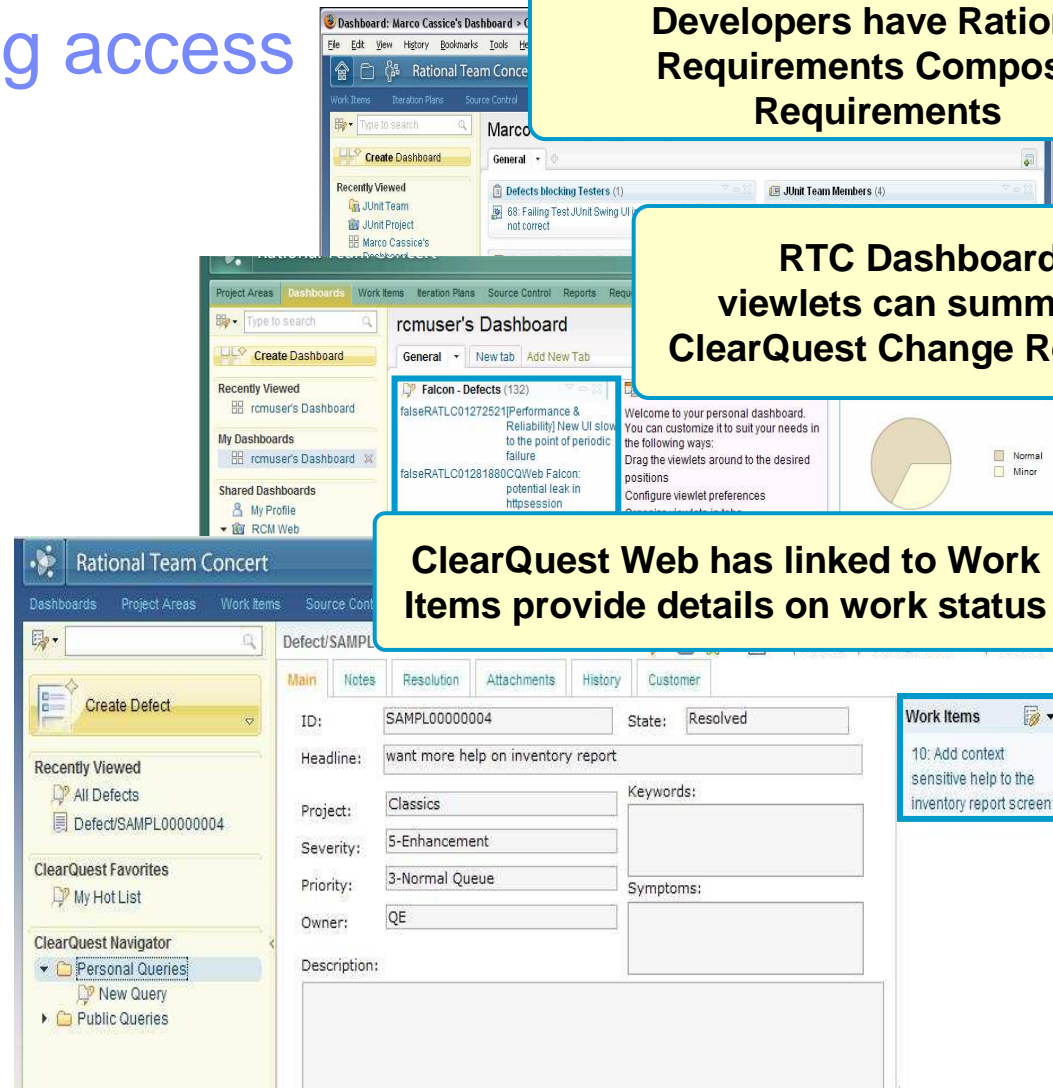
Robust Connectors

- ▶ Enable individuals access to information through unified UIs
- ▶ Increases productivity by reducing UI switching

RTC Dashboard Mashups
Developers have Rational
Requirements Composer
Requirements

RTC Dashboards
viewlets can summarize
ClearQuest Change Requests

ClearQuest Web has linked to Work
Items provide details on work status



ClearQuest Directions

Web UI

Consumability and Usability Enhancements

Performance

CM Server Infrastructure
Load Balancing, CM API

Infuse with Jazz

Bridge enhancements to application lifecycle management
Plan, Collaborate, View, Link using Jazz

Expand ALM

Open Services Lifecycle Collaboration
Integrate with RQM, RTC, DOORS, SA with Standard API

RTC Server Entitlement

Entitlement to Limited Use of RTC Server
For Change Management Capabilities for CQ

The information on the new product is intended to outline our general product direction and it should not be relied on in making a purchasing decision. The information on the new product is for informational purposes only and may not be incorporated into any contract. The information on the new product is not a commitment, promise, or legal obligation to deliver any material, code or functionality. The development, release, and timing of any features or functionality described for our products remains at our sole discretion.



ClearCase Directions

Common Client

An Eclipse based Common UI for all view types
Web Views, Dynamic Views, Snapshot views

Performance

CM Server Infrastructure
Load Balancing, CM API

Security

Configurable role based security for ClearCase artifacts
ClearCase Access Control List

Infuse with Jazz

Bridge to application lifecycle management
Plan, Construct, Refine, Deploy using Jazz

Global Admin

Monitor & administer distributed ClearCase assets
Multisite Administration

The information on the new product is intended to outline our general product direction and it should not be relied on in making a purchasing decision. The information on the new product is for informational purposes only and may not be incorporated into any contract. The information on the new product is not a commitment, promise, or legal obligation to deliver any material, code or functionality. The development, release, and timing of any features or functionality described for our products remains at our sole discretion.



Change Directions

User Interface

Consumability and Usability Enhancements
Extended Text enhancements

Performance

Alteon load balancer with central server

Infuse with Jazz

Change – RTC bridge to support Agile Planning

Expand ALM

CM OSLC API: Integrate with RQM, RTC, DOORS, SA, ...
Ext. CM OSLC API: Leverage Enterprise Reporting with RPE, Insight

Features

Dynamically Required Attributes
Dynamically Assigned Privileges

The information on the new product is intended to outline our general product direction and it should not be relied on in making a purchasing decision. The information on the new product is for informational purposes only and may not be incorporated into any contract. The information on the new product is not a commitment, promise, or legal obligation to deliver any material, code or functionality. The development, release, and timing of any features or functionality described for our products remains at our sole discretion.



Synergy Directions

User Interface

Completion of the Synergy client – obsolete Classic client

Performance

Only one communication mode: the new web mode
Prepare for backend modernization

Maintainability

Only one single release for Asia and the Rest of the World

Infuse with Jazz

Synergy – RTC data synchronization,
Synergy – RTC Bridge for Agile Planning support

Administration

Reduced Backup time

The information on the new product is intended to outline our general product direction and it should not be relied on in making a purchasing decision. The information on the new product is for informational purposes only and may not be incorporated into any contract. The information on the new product is not a commitment, promise, or legal obligation to deliver any material, code or functionality. The development, release, and timing of any features or functionality described for our products remains at our sole discretion.



Team Concert Directions

- 2.0.0.2 (Dec 2009)
 - ▶ Windows 7 support
 - ▶ Simple document management from the Team Concert web UI
 - ▶ Customizable attribute in the web and rich clients
 - Support for dependent attributes, fixed lists, query on selection, etc...
- RTC 2.x
 - ▶ Repository refactoring (for example, moving projects between servers)
 - ▶ Token licensing
 - ▶ Feature based development
 - ▶ Cross repository linking, moving, and deliver/accept
 - ▶ Open social widgets in web UI
 - ▶ Improved integrations –
Insight, Build Forge, ClearCase/Quest
 - ▶ Process template evolutions

The information on the new product is intended to outline our general product direction and it should not be relied on in making a purchasing decision. The information on the new product is for informational purposes only and may not be incorporated into any contract. The information on the new product is not a commitment, promise, or legal obligation to deliver any material, code or functionality. The development, release, and timing of any features or functionality described for our products remains at our sole discretion.



Rational partner solutions support for

Rational. Team Concert



Mainsoft

Enhance team collaboration with direct, per-project document linkages to Microsoft® SharePoint® and Lotus® Quickr® libraries



cmlogic
empowering change

Support heterogeneous environments with bidirectional integration with the JIRA change management system



QSM

Analyzes project and resource data to provide accurate estimation and enhanced project control



WebLayers

Enable automated governance to insure compliance and minimize business risk around highly flexible and distributed development environments



CAST
ACHIEVE INSIGHT. DELIVER EXCELLENCE.

Automated assessment and metrics for technical quality and team performance



blackduck

Provides open source IP management



BSD GROUP

Allows bi-directional synchronization of defects and workflows with HP Quality Center®



Rational partner solutions support for

Rational. ClearCase

Rational. ClearQuest



Accelerates CCRC WAN performance



Provides Integrated Change Management with WindChill® PDM system



Enables NetApp Storage environment for CC VOBs



Allows streamlined sharing of info between CC & CQ



Provides BusinessObjects Crystal Reports reporting for Rational ClearQuest



Provides integration to Tasktop's Mylyn-based task management system





© Copyright IBM Corporation 2009. All rights reserved. The information contained in these materials is provided for informational purposes only, and is provided AS IS without warranty of any kind, express or implied. IBM shall not be responsible for any damages arising out of the use of, or otherwise related to, these materials. Nothing contained in these materials is intended to, nor shall have the effect of, creating any warranties or representations from IBM or its suppliers or licensors, or altering the terms and conditions of the applicable license agreement governing the use of IBM software. References in these materials to IBM products, programs, or services do not imply that they will be available in all countries in which IBM operates. Product release dates and/or capabilities referenced in these materials may change at any time at IBM's sole discretion based on market opportunities or other factors, and are not intended to be a commitment to future product or feature availability in any way. IBM, the IBM logo, Rational, the Rational logo, Telelogic, the Telelogic logo, and other IBM products and services are trademarks of the International Business Machines Corporation, in the United States, other countries or both. Other company, product, or service names may be trademarks or service marks of others.

