

IBM Commerce

Merkmale erfolgreicher Projekte - ein Erfahrungsbericht aus 10 Jahren Services

Thomas Hurek, Digital Experience
Lab Services, IBM USA



Agenda

- Recent sample service projects
- Project Planning
- Architecture
- Versions and Maintenance
- Testing
- Performance

Recent Sample Service Projects



Worldwide Retail company



- WCM 8.5 based site
- Several million pieces of content
- Each Country has a copy of a „site“ with custom config – all stored in WCM for easy adjustment
- Multi-Lingual
- Projects with up to 1000 content items
- Akamai deployment for high performance across the world

- Lessons: Consider frequent WCM maintenance, Do Templates right, Performance improvements in recent CFs

US business and personal insurance agency

- Intranet solution
- Continuous Deployment via PAA Maven and Udeploy
- Agile sprint development cycle
- Connections 5.5 Integration
- Multi-Profile Deployment
- Multi-Swim Lane for fast development cycle

- Lessons: Build PAAs right – powerful, Automated install and config



US Health Care insurance

- Deployment on Softlayer
 - Transition from on premise to Softlayer
 - Automated scripted install and configuration via puppet
 - Lightweight portlets connect back to the enterprise via VPN
-
- Lessons: Resource Management – bare metal Softlayer, New Monitoring tools



South America Bank

- Mobile First WCM 8.5 site
- Friendly URLs + SEO
- Online Offers
- Very popular – performance optimization for caching
- Lessons: Tuning/Caching, Consistent friendly URLs



Project Planning



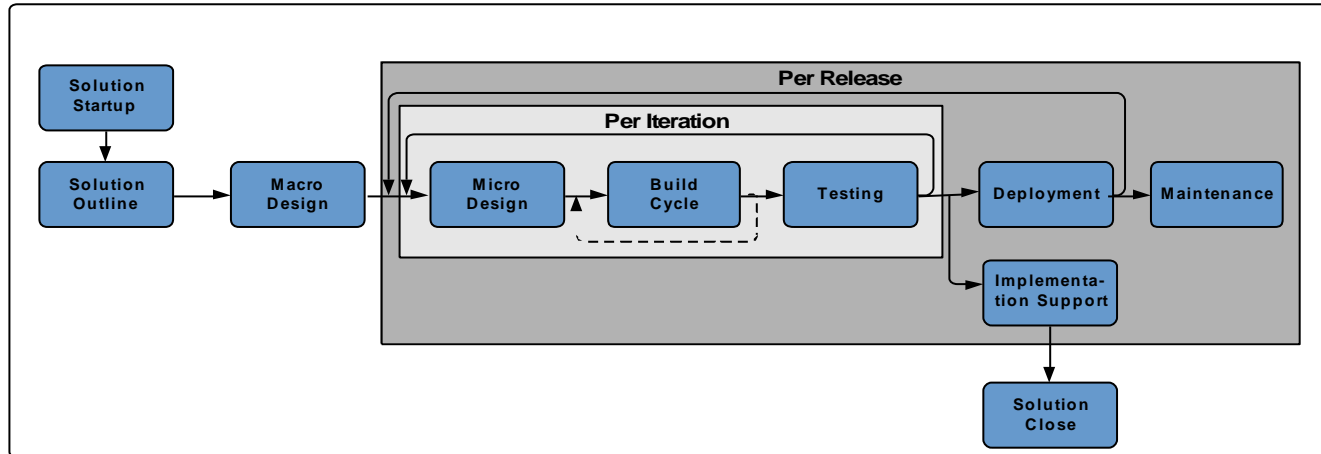
With our newly adopted Agile project management methodology, I can now get nine women to deliver a baby in one month.



someecards
user card

Project Planning

- Gradual Rollout, Pilot approach
- Iterative Planning






Project Planning

- Roadmap
- Backup planning
- Change History
- Continuous Deployment and Delivery -> Build Pipeline
- Sizing
- Performance Testing
- Mobile & Analytics & Social requirements
- NFRs – 24*7, Accessibility, Multi-Lingual

Architecture



Trends Development

- Script Portlet
- Client side coding, libraries, and frameworks
- Continuous Delivery and Deployment  Jenkins
- Mix Legacy and new UI technologies
- Managed Pages and Projects for the Business
- Responsive /Reactive UI
- Mobile Apps
- Automated testing as part of development lifecycle  
- WCM in the theme

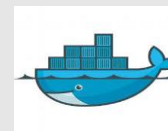


Dev

Build<->Test<->Deploy

Ops

<- Continuous Delivery Pipeline ->

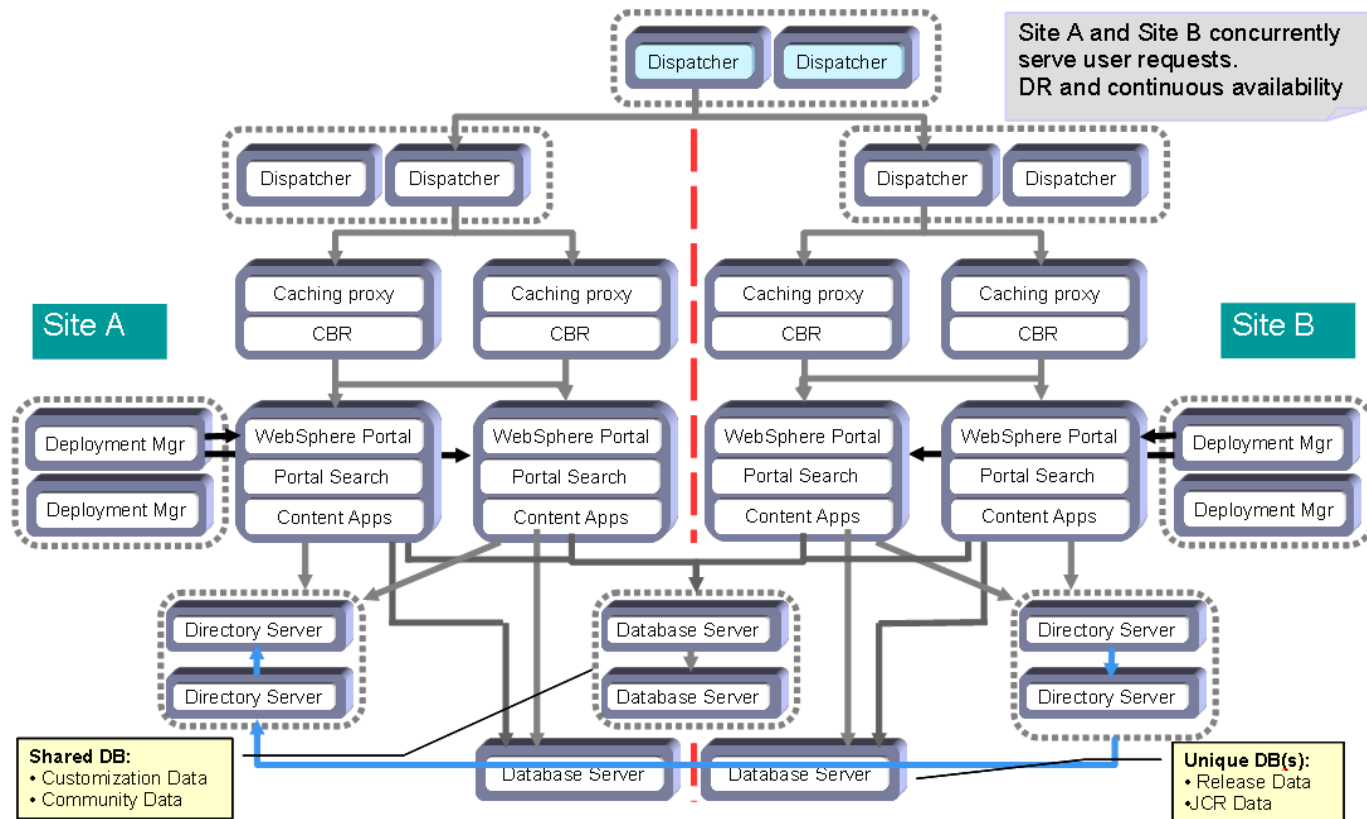


Trends Architecture

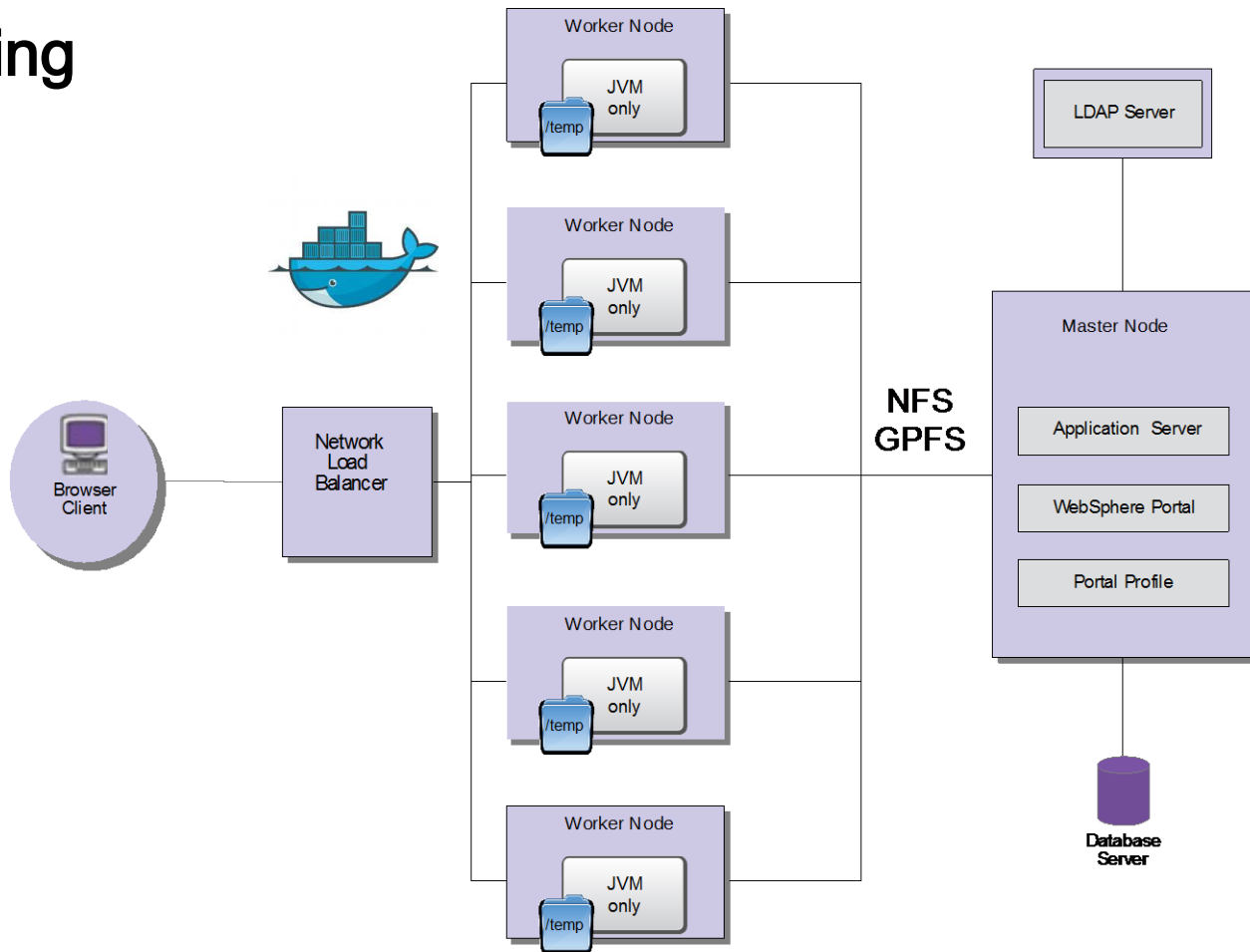
- Virtualization – VMWare, PureApps, Docker, ...
- Cloud – DX or Amazon or ...
- Analytics -> Tealeaf
- Content Delivery Caching Akamai fastly
- WCM on every page
- Inline Editing with JS Editors textbox io
- Content as a service
- Friendly URLs
- Multi Cluster High Availability / Farming



High Availability



Farming



Trends Architecture

- SAML SSO Front and Back
- OpenAuth/ID
- Commerce Integrations
- Social Integrations



- Bluemix / Watson Integration / Internet of Things



Versions and Maintenance



Digital Experience Developer site: the latest resources for developers/admins <http://developer.ibm.com/digexp/>

Blog from the IBM product team

Current technical articles

Latest News

MAY 26, 2015
IBM Digital Experience File Sync 1.0 Now Available

The IBM Digital Experience File Sync tool allows you to store on any IBM WebSphere Portal Server and sync content to your local hard drive. When the tool is runn will watch all file and directory changes locally and syn the remote repository.

MAY 26, 2015
Developing IBM WebSphere Portal 8.5 EAR Theme:

In some theme development projects there may be a n dynamic and the static resources for a portal theme as using WebDAV for the static resources. See the full blc article on this which is applicable to either Portal 8.0 or

MAY 8, 2015
Enabling Google Mobile-Friendly Search Results wa Portal

Wondering how Google's latest update to mobile-frien your IBM Digital Experience solution? In this post, we'l identifying mobile-friendly web pages and how the IBM platform handles those situations.

APRIL 23, 2015
Theme Tip #1: Locating Theme Resources in Case

Did you ever end up in a situation where you had a JA

Downloadable samples

Samples & Open Source



Category : All

WebSphere Commerce Sample for IBM Digital Data Connector in WebSphere Portal
Category: Integration WebSphere Commerce Sample for IBM Digital Data Connector in WebSphere Portal
Published On: 4/29/2015
Last Modified: 4/30/2015

Programmatically Displaying IBM Web Content Manager Content
Category: Web Content Management Examples of how to display WCM content from custom code
Published On: 4/20/2015
Last Modified: 4/20/2015

Script Portlet Samples for IBM WebSphere Portal
Category: Application Development A set of samples that illustrate a variety of techniques you can use in the new IBM Script Portlet for WebSphere Portal
Published On: 4/8/2014
Last Modified: 4/14/2015

Extending IBM Forms Experience Builder with a J2CAlias-enabled LDAP Transport
Category: Application Development This custom transport extends the base LDAP transport and leverages the WebSphere J2CAlias feature.
Published On: 7/18/2014
Last Modified: 3/30/2015

Theme PAA for IBM WebSphere Portal

More Sample Sources

IBM Web Experience Factory
IBM Forms Experience Builder
IBM Rational Application Developer Portal Tools

Get Involved

Interested in contributing your valuabl samples or extensions to this open so repository? See this page for informat on contributing: OpenNTF Contributio Process.

▼ Docs

▼ Tutorials and Labs

Lab – Building your Site with IBM Digital Experience and CTC

▼ Themes

Portlet scoped theme modules in IBM WebSphere Portal 8.5

Debugging cacheability issues with theme resource aggregator requests

How to show the site toolbar for administrative users only

▼ Script Portlet

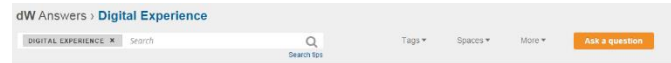
Getting Started with Script Portlet

Using a Backbone js Single Page Application as a Script Portlet

Accessing Server-Side Data in Script Portlet Using a Web Content Manager JSP Component

Using an AngularJS Single Page Application as a Script Portlet

Answers to questions



Questions in Digital Experience space

All Unanswered

1 answer 0 Likes 4 Views
How can I get rid of the "Only secure content is displayed" message in Internet Explorer when browsing WebSphere Portal pages?
PORTAL DIGEXP INTERNET-EXPLORER
bg_12 edited 40 minutes ago

1 answer 0 Likes 7 Views
Health check reports the following error "ERROR: Portal patches have been found...". How can I correct this?
PORTAL DIGEXP
you_guessed_it answered 1 hour ago

1 answer 0 Likes 22 Views
What is the purpose of the DigestTracker cookie in WebSphere Portal?
PORTAL DIGEXP COOKIE
bg_12 answered 1 hour ago

2 answers 0 Likes 40 Views
How to resolve error: EJEPE0006E: Creating a virtual portal failed because a unique key constraint?
PORTAL DIGEXP CREATE KEY CONSTRAINT VIOLATION DELETE
dvorosnee edited 15 hours ago

1 answer 0 Likes 34 Views
How to show Content and Layout tabs in Edit Mode for a page in Portal 8.0?
PORTAL DIGEXP PAGE STATIC EDIT MODE STANDARD
dobresne commented 18 hours ago

296 questions

Top dW users



Tags I follow



Recent articles

- [Leveraging Docker with Digital Experience](#)
- [Generate Portal themes from Wordpress Themes](#)
- [Leveraging Google OpenID connect with Digital Experience](#)
- [Creating Maps with Google Static API and IBM Web Content Manager](#)
- [Adding Bootstrap to a Portal Theme](#)
- [Leveraging the Power of Web Content Manager Within a Portal Theme](#)

And Here is What We've Done

What's new in the combined cumulative fixes

Learn what's new in the IBM® WebSphere® Portal Version 8.5 combined cumulative fixes.

[CF10 What's new with CF10](#)

This Combined Cumulative Fix includes new features and improvements.

[CF09 What's new with CF09](#)

This Combined Cumulative Fix includes new features and improvements.

[CF08 What's new with CF08](#)

This Combined Cumulative Fix includes new features and improvements.

[What's new with CF07](#)

This Combined Cumulative Fix includes new features and improvements.

[What's new with CF06](#)

This Combined Cumulative Fix includes new features and improvements.

[What's new with CF05](#)

This Combined Cumulative Fix includes new features and improvements.

[What's new with CF04](#)

This Combined Cumulative Fix includes new features and improvements.

[What's new with CF03](#)

This Combined Cumulative Fix includes new features and improvements.

Parent topic: [What's new](#)

- http://www-01.ibm.com/support/knowledgecenter/SSHRKX_8.5.0/mp/overview/new_cf.dita

Continuous Delivery

- Resource Aggregation for portlets
- Renditions
- Syndication Mirror mode
- Content as a Service
- Render content as JSON, XML, ...
- MobileFirst support
- Script portlet in CF
- Theme Editor + Simple Theme
- Coming up: JDK 8, WAS 9, ...

Migration

- Plan for sufficient time
- Keep old and new side by side
- Migrate once, stage everywhere
- Migrated system does not match a freshly installed system
- If only using Portal consider migration via XMLAccess (limited support)
- If only using WCM consider cross version syndication (limited support)
- Migrate and then start leveraging new features in a second step

Testing



- What to test:
 - Functionality: Portlets, Themes/Skins, Web Content Manager Authoring and Rendering, Backend Integration
 - Staging to Production process
 - Deployment
 - Performance / Load
 - Security / Penetration
 - High Availability (if needed)
 - Backup/Restore
 - Different Browsers
 - Devices / Mobile / Native Apps
 - Analytic Tracking
 - Exception / Error free log files

Testing

- How to test:
 - Unit tests – by developers
 - Manual tests – test team
 - Automation: Rational Function Tester, Silk, ... - test team and automation team
 - Load/Stress Tests with tools (HP LoadRunner, Rational Performance Tester, Apache JMeter, ...)
- Verify your staging to production process is bullet-proof
- Make sure that you test realistically – number of users, different use cases, realistic data, realistic backends
- Assume that if you do not test it, it will not work!

Performance



Challenges

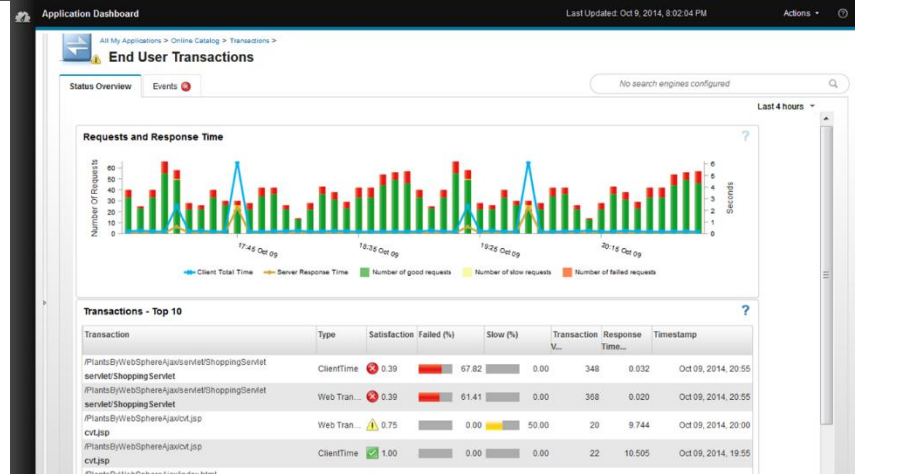
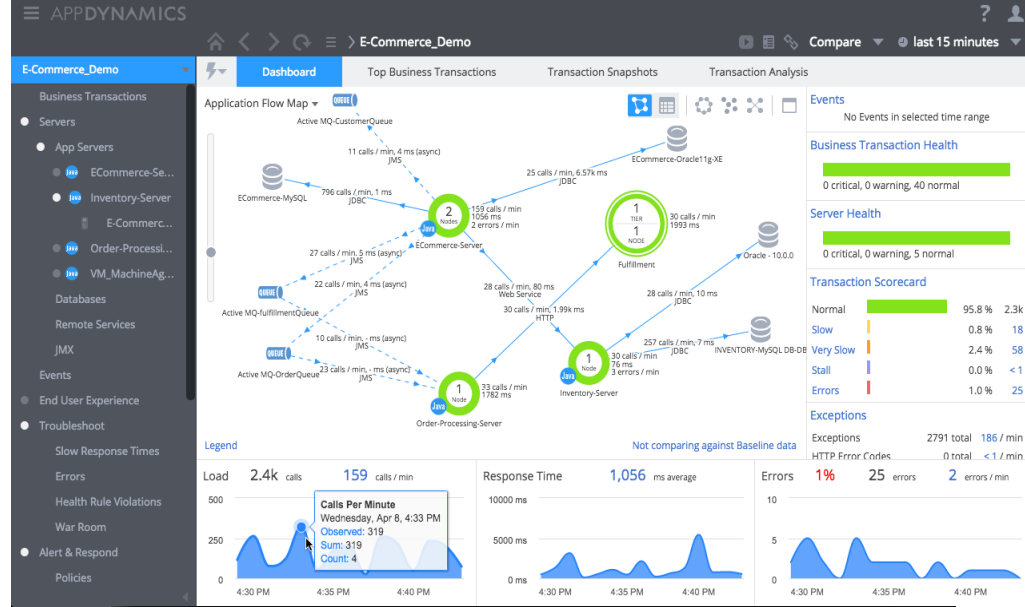
- Rarely product challenges
 - Number of items in projects
 - Issues with WCM design
 - Missing WCM maintenance
- Virtualization issues
- Still missing tuning
- Backend calls
- Still client side overload
- Insufficient testing
- Insufficient monitoring and alerting

Challenges - Cloud

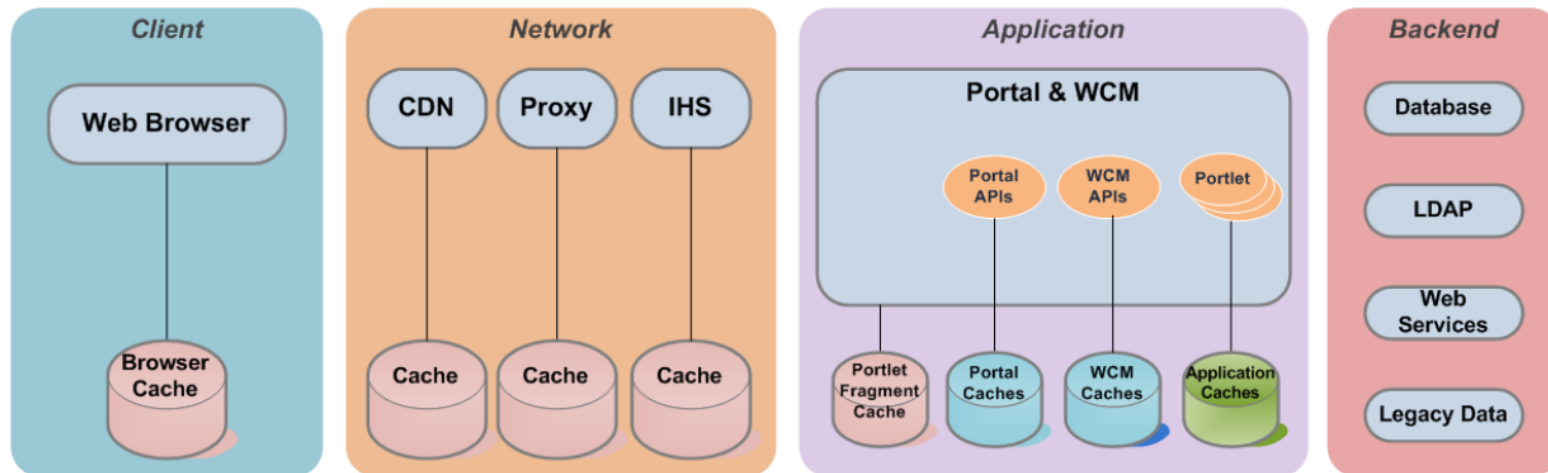
- Softlayer (or other cloud) resource sharing
- Connections back to the customer Network
- Testing limitations
- Need for CDNs?

(New) Tools

- AppDynamics
- New Relic
- IBM APM
- Google PageSpeed
- Sitespeed.io
- Webpagetest



Caching!!!



- HTTP Responses
 - Web Pages
 - Images
 - CSS
 - JavaScript
- Private & Public
- HTTP Responses
 - Public Only
- HTTP Responses from a portlet
- Internal Portal & WCM data
- Backend query results
- Custom application data

Vielen Dank



Thomas Hurek



Join the
conversation

[Blog](#), [YouTube](#),
[Twitter](#) and [Facebook](#)

IBM Commerce

