

IBM Netezza Replication QuickStart Offering

Accelerate your time to value



Highlights:

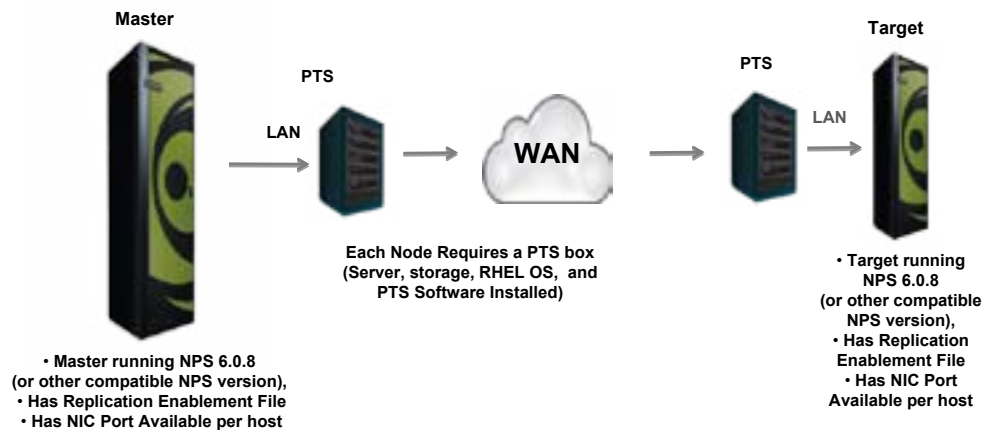
- Accelerate your time to value and return on investment on your Netezza Replication technology
- Deploy the foundation for your Enterprise Disaster Recovery Initiative
- Decrease risk to your enterprise

Analytic workloads have become mission-critical applications, and many clients now demand the infrastructure to support reliable disaster recovery, concurrent multi-site access, and load balancing between data centers. Regulatory requirements apply additional pressure. In response to the requirements, many enterprises develop and deploy custom disaster recovery solutions. Ultimately, these clients desire a complete disaster recovery solution that can be deployed quickly, yields immediate value, and makes minimal demands on scarce technical resources.

IBM Netezza Replication Services provide asynchronous replication for disaster recovery and concurrent multi-site access. Replication protects against data loss by synchronizing data on a primary system with one or more target systems.

Our experts deliver the technical leadership and expertise to build your Disaster Recovery foundation and ensure that the IBM Netezza Replication Solution is properly implemented.

Netezza Replication Solution Overview:



Overview

The IBM Netezza Replication QuickStart Offering allows for a smooth transition and adoption of this new replication capability. The objective is to get you up and running quickly with your first deployment of the Netezza Replication Solution in order to address the critical first step towards your enterprise-level disaster recovery needs.

This offering provides:

1. Establishment of an end to end high performance connectivity between the appliances and the persistent transport systems through a wide area network
2. Installation and configuration of the Netezza Replication Software and Hardware Solution from one Netezza source to one target
3. Enablement on the Netezza Replication Solution
4. Planning workshop to document disaster and recovery scenarios based on your requirements

The output of this engagement will provide the foundation for your enterprise replication deployment to support your disaster recovery and workload distribution requirements.

Your independence is our greatest success

Nothing is more important than transferring IBM expert knowledge to your organization. This provides long-term self-sufficiency through a mentored approach.

Engage today

With a world-wide team of highly trained professionals, the IBM Information Management Lab Services team can help build your solution with confidence while assuring that the business needs and expectations of your organization are met. Our experts are ready to assist your organization with:

- Establishing project goals and expectations
- Maximizing the return on your investment
- Reducing project delivery times, complexity and risk through the delivery of proven offerings
- Reducing total cost of ownership
- Information sharing through our mentoring approach

Available for any delivery approach, the IBM Information Management Lab Services team will produce results quickly, and will help to put your project on the road to success.

For more information

- Visit the Information Management Lab Services Web site at:
ibm.com/software/data/services
- Find us on Facebook:
on.fb.me/IMSKILLS



© Copyright IBM Corporation 2012

IBM Global Services
Route 100
Somers, NY 10589
U.S.A.

Produced in the United States of America
September, 2012
All Rights Reserved

IBM, the IBM logo, ibm.com and logos are trademarks or registered trademarks of International Business Machines Corporation in the United States, other countries, or both. If these and other IBM trademarked terms are marked on their first occurrence in this information with a trademark symbol (® or ™), these symbols indicate U.S. registered or common law trademarks owned by IBM at the time this information was published. Such trademarks may also be registered or common law trademarks in other countries. A current list of IBM trademarks is available on the Web at "Copyright and trademark information" at: ibm.com/legal/copytrade.shtml

Other product, company or service names may be trademarks or service marks of others.

References in this publication to IBM products or services do not imply that IBM intends to make them available in all countries in which IBM operates.



Please Recycle