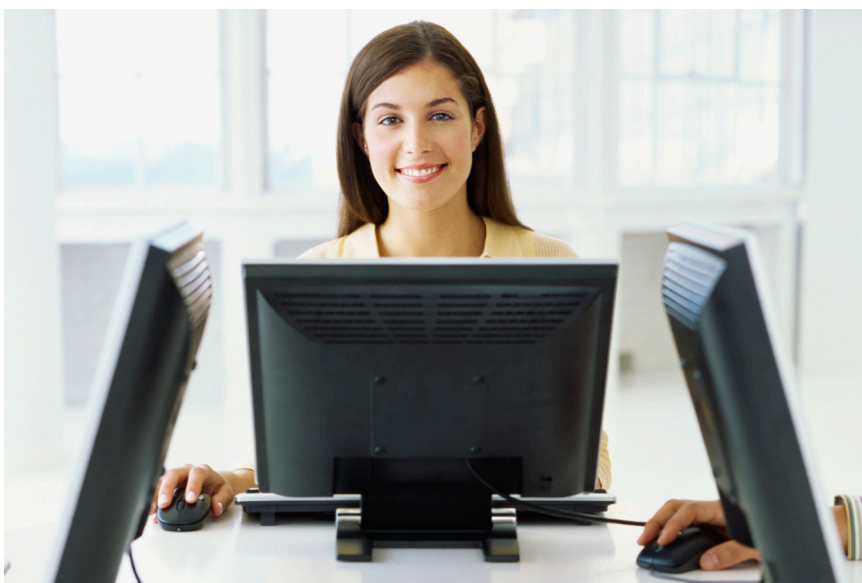


## Information Management, Analytics & Optimization Services

### IMS SOA Enablement Service Offering



The third stage will be the creation and deployment of the PoC application. It is recommended to schedule a meeting about 2 to 4 weeks prior to the onsite work, in order to define the requirements (tools to be utilized, software version and maintenance levels required, security authorization required, and identification of the staffing to be available). The following list presents possible offerings and estimations of the service days required, which vary depending on your requirements and complexity of the IMS application and environment.

#### Highlights

- ***Service from the IMS Laboratory Technical Specialist group***
- ***Get started with reusing your IMS applications in a services world***
- ***Prepare your IMS environment for performance, growth and service enabling***
- ***Findings delivered as paper report including management summary***

The IMS SOA Enablement Service Offering comes from the IMS laboratory Technical Specialist group. This offering is related to those Clients who are interested in getting started with the SOA technologies offered with recent IMS and IBM product enhancements to reuse assets of their current production IMS environments.

#### Implementation Approach and Deliverables

The engagement consists of a two to n-days on-site work with an IMS and z/OS test system that the Client supplies. The first stage is a review what the target of the Proof of Concept (PoC) application will be, and then as a second stage, setting up the environment (IMS Connect, IMS SOAP Gateway, WebSphere Application Server, JDK for z/OS, etc.).

- Configure and bring up IMS Connect (one day)
- Configure and bring up IMS SOAP Gateway including Installation verification (one day with one additional day if Java is not enabled on z/OS)
- Web Service enablement with SOAP Gateway and Rational Developer for System z of an IMS transaction of your choice (One to five days depending on the complexity of the input/output message structures)
- Web Service or J2EE Enablement of the IMS transaction of your choice and deployment in WebSphere Application Server (One to five days depending on the complexity)

## Duration

Variable, depending on the requested scope.

## Next Steps

Your first step is to get your initial project up and running and quickly deploying and configuring the middleware required for service enablement. This will then be the basis for your companies growth and service enablement to reuse functionality existing in your IMS applications.

## For more information

To learn more about IBM Software Services and this service offering, please contact your local IBM sales representative or send an e-mail to [jhook@us.ibm.com](mailto:jhook@us.ibm.com).

The manager of the IMS Laboratory Technical Specialist Group will be happy to help.

Visit our website at:

[ibm.com/software/data/services](http://ibm.com/software/data/services)



© Copyright IBM Corporation 2010

IBM Corporation  
Software Group  
1133 Westchester Avenue  
White Plains, NY 10604  
U.S.A.

Published in Canada  
02-09

All Rights Reserved

The IBM, the IBM logo, e-business software, DB2, and Informix, are trademarks or registered trademarks of International Business Machines Corporation in the United States, other countries, or both.

Other company, product, and service names may be trademarks or service marks of others.

References in this publication to IBM products or services do not imply that IBM intends to make them available in all countries in which IBM operates.