



IBM Software Services for DB2 Information Management

**IBM® Information Management software**

# IBM Upgrade Services for DB2 Enterprise Server Edition V9.1 for Linux, UNIX, and Windows



## What's Involved

When engaging IBM Software Services, you can be sure that you are working with the industry's leading experts. Consultants from IBM Software Services for DB2 Information Management assist you with the installation and configuration of the DB2 Data Server family of products. The consultants will work closely with the administrators of your database systems. A series of interviews will be conducted to identify business and IT issues that may be leading to reduced performance.

## Highlights

- ***Learn from the best DB2 experts in the industry in how to upgrade and get the most from your data environment***
- ***Work with IBM's expert database consultants to mentor your staff***
- ***Design your system optimally using IBM database best practices and avoid costly changes once a system is in production***

The latest release of IBM® DB2® for Linux, UNIX and Windows provides the ultimate in performance, scalability, reliability, availability, and security all in a cost-effective platform that is open and flexible and supports key industry standards. Additionally, improved integration with key development platforms makes application developers even more productive than ever.

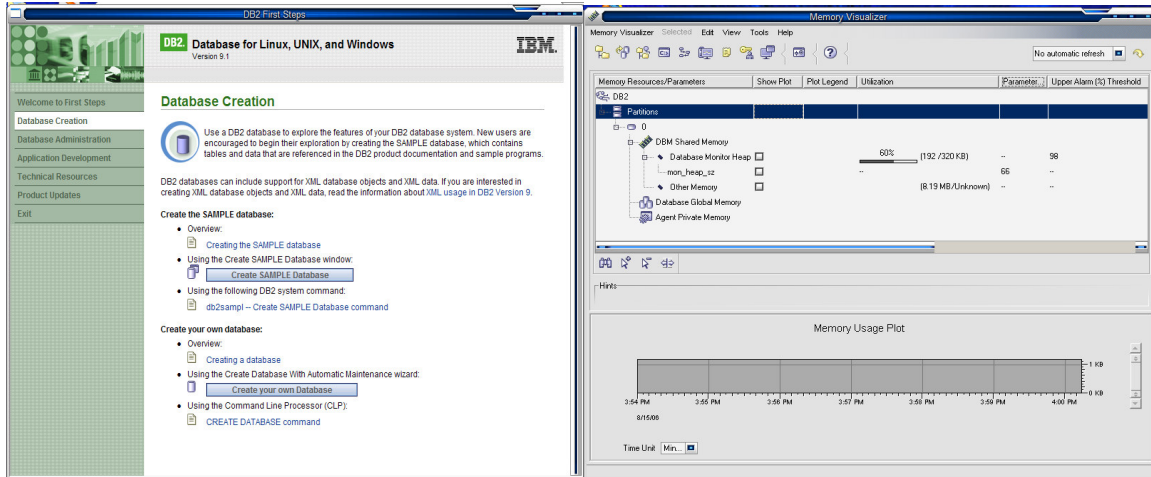
The purpose of this offering is to provide you on-site services to install and configure DB2 9 in your organizations' existing DB2 environment plus migrate the existing databases. Includes:

- Database installation
- Review and Migration of the existing databases
- Basic performance tuning
- New feature education and help identify how they can be exploited in your environment

The Software Consultant will identify and address all elements in the existing system prior to any upgrade work. In addition, the Consultant will work with your DBAs, application developers and system administrators to ensure that all areas are considered prior to the upgrade. The Consultant will deliver a written recommendation detailing any pre-upgrade steps/actions which must be taken.

Onsite coordination of an Upgrade project will include:

- Physical layout and database design review
- Configuration
- Basic Performance Tuning
- Identify and discuss new DB2 9 technology with staff ... identify how they can be exploited if possible
  - pureXML™
  - Compression
  - Partitioning
  - Security



### Application Enablement

Once DB2 9 is installed and configured and the database(s) migrated, existing applications will be rebound to the databases.

### Performance Tuning

The IBM Consultant will provide basic configuration and tuning assistance for the databases after the new version of the product is installed. The focus of the tuning will be in areas specific to the new version of the database. If in-depth performance tuning is required, this should be requested at the time of purchasing this offering.

### Education on New Features:

The IBM Consultant will review the new features offered in DB2 9 with the customer staff, and, if applicable, discuss how the new features can be exploited and implemented in the migrated environment. Note that actual implementation of the new features is not a part of this engagement by default.

### For more information

To learn more about IBM Software Services for DB2 Information Management and this service offering, please contact your local IBM sales representative or send an e-mail to [dmskills@us.ibm.com](mailto:dmskills@us.ibm.com). You can also reach via the following website:  
<http://www-306.ibm.com/software/data/services/contacts.html>

© Copyright IBM Corporation 2006

IBM Corporation  
Software Group  
1133 Westchester Avenue  
White Plains, NY 10604  
U.S.A.

IBM, the IBM logo, WebSphere, Alphablox and DB2 are trademarks or registered trademarks of International Business Machines Corporation in the United States and other countries. All rights reserved. Other company, product, and service names may be trademarks or service marks of others.

References in this publication to IBM products or services do not imply that IBM intends to make them available in all countries in which IBM operates.

### Supported Products

IBM DB2 9 for Linux, UNIX and Windows  
IBM DB2 Connect  
IBM DB2 9 Data Warehouse Edition

Visit our Web site at  
[ibm.com/software/data/services](http://ibm.com/software/data/services)