



WebSphere® software

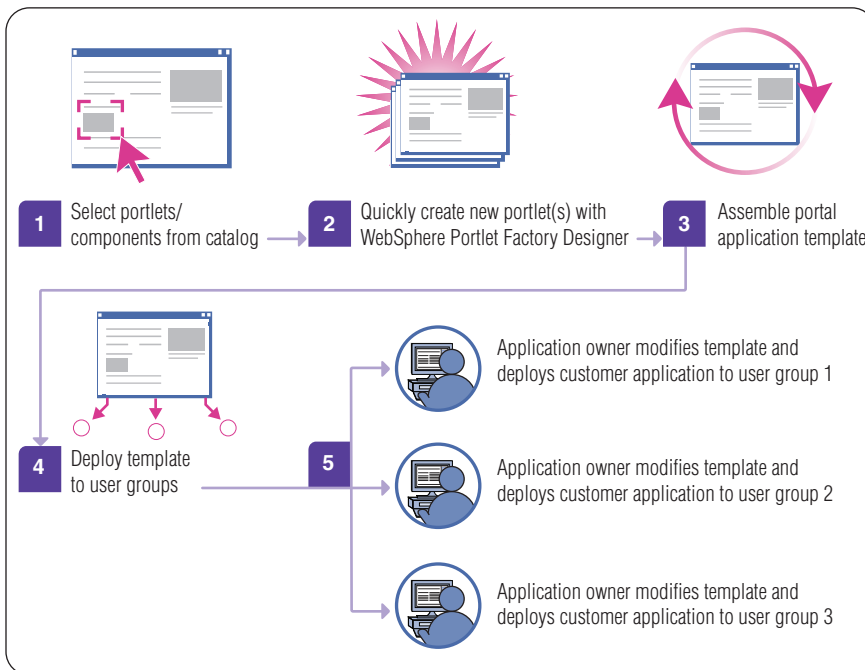
IBM WebSphere Portal Version 6.0

Highlights

- **Help improve efficiency and productivity by linking people to the right information, so they can execute tasks quickly and accurately**
- **Help speed application and content deployments with templates, component reuse and easy editing functionality**
- **Help lower the overall costs of portal deployment with faster performance and easier administration**
- **Team with IBM, a leader in the enterprise portal marketplace with broad industry experience**

Help empower users with the right resources, at the right time

IBM WebSphere® Portal software helps you quickly build scalable portals that simplify and accelerate user access to personalized information, applications, processes and people. This personalized access helps maximize organizational productivity and operational efficiency. WebSphere Portal software delivers these business benefits while getting you started with service-oriented architecture (SOA). SOA implementations leverage open standards to represent IT and line-of-business (LOB) assets, including repeatable business tasks, as standards-based services. Services in the form of portlets can provide access to applications, tasks, information and other users. Portlets allow WebSphere Portal software to present related and integrated services as composite applications to end users, based on their roles—providing the front end of SOA applications.



WebSphere Portal software helps you deploy customized applications faster by reusing existing assets and applying application templates.

The enhanced access made possible with WebSphere Portal software can help you improve your organization's effectiveness through better use of resources and an innovative IT infrastructure that supports changing business requirements.

WebSphere Portal software includes three packaged offerings:

- *IBM WebSphere Portal Server Version 6.0*
- *IBM WebSphere Portal Enable Version 6.0*
- *IBM WebSphere Portal Extend Version 6.0*

Get your portal up quickly with IBM WebSphere Portal Server software

WebSphere Portal Server Version 6.0 software lets you quickly consolidate applications and content into role-based applications, complete with search, personalization and security capabilities. You can also apply powerful development capabilities, like those of IBM WebSphere Portlet Factory software, to speed application deployment.

For organizations seeking to deploy unified access and role-based interaction with their applications and content, WebSphere Portal Server software delivers a scalable architecture and core portal services such as:

- *Aggregated applications and content delivered as role-based applications*
- *Access to enterprise data and applications, and external news feeds or Web data*

- *Portal page customization to personal work patterns and job roles*
- *Portlet-to-portlet communication and action using click-to-action technology for creating highly interactive portal applications*
- *Multisite support so you can create multiple virtual portal sites on a single instance of WebSphere Portal software*
- *Templates and WebSphere Portlet Factory software that helps you speed application deployment through new portlet development and deployment capabilities*
- *Integration and tooling that allows you to quickly create composite, high-value applications that leverage existing investments in legacy applications and databases*
- *Enhanced usability, administration, search and performance*

WebSphere Portal Server software includes restricted licenses to the following software:*

- *IBM Tivoli® Directory Server*
- *IBM WebSphere Application Server*
- *IBM DB2® Universal Database™*
- *IBM WebSphere Portlet Factory*

Deliver advanced portal functionality with WebSphere Portal Enable software

Combine a powerful workflow engine with your dynamic portal experience to speed business processes. WebSphere Portal Enable Version 6.0 software helps users get the information they need in the context of the tasks they are doing by supplying a portal workflow engine. You can also manage content across a range of formats. And flexible deployment options let you deliver advanced portal solutions to wider audiences.

For enterprise organizations looking to improve effectiveness, WebSphere Portal Enable software delivers role-based access to applications and content with a rich set of portal services that improves the productivity of LOB and IT staff.

In addition to WebSphere Portal Server components, WebSphere Portal Enable software delivers:

- *Integrated Web content management capabilities that allow you to easily author and manage information displayed by your portal server*
- *The ability for users to securely share, search, organize and edit documents*
- *Portal workflow capabilities that connect people with applications and information in the context of the tasks they need to complete*

Along with the IBM software components in WebSphere Portal Server software, WebSphere Portal Enable software includes IBM WebSphere Portal Document Manager software and restricted licenses of the following software:

- *IBM® Workplace™ Web Content Management™*
- *IBM WebSphere Process Server*

Expand collaboration capabilities with IBM WebSphere Portal Extend software

WebSphere Portal Extend Version 6.0 software adds services for collaboration and electronic forms to WebSphere Portal Server and WebSphere Portal Enable software, including:

- *Individual and shared team spaces that allow you to exchange ideas with other portal users to improve team productivity*
- *Instant messaging so you can chat with other portal users in the context of a task or application*
- *Editable electronic forms that can be integrated into business processes*

In addition to the IBM software components in WebSphere Portal Server and WebSphere Portal Enable software, WebSphere Portal Extend software includes restricted licenses to the following products:*

- *IBM Workplace Forms™*
- *IBM Lotus® Sametime®*
- *IBM Lotus QuickPlace®*
- *IBM Lotus Domino® Enterprise Server*

IBM WebSphere Portal Version 6.0 software at a glance

Hardware requirements

One of the following

- IBM compatible x86-32 processor
- IBM System i™ processor
- IBM System p™ processor
- IBM System z™ processor
- Hewlett-Packard PA-RISC processor
- Sun Sparc processor

Software requirements

Supported operating systems

- Microsoft® Windows® 2000 Server with service pack 4 or Windows 2000 Advanced Server with service pack 4
- Windows XP Professional with service pack 1a or service pack 2 (for development and test purposes only)
- Windows 2003 Standard Edition with service pack 1 or Windows Server 2003 Enterprise Edition with service pack 1
- Linux® on x86-32
 - Red Hat Enterprise Linux (RHEL) Advanced Server (AS), RHEL Enterprise Server (ES), RHEL Workstation (WS), and RHEL Desktop V3.0 Update 6, V4.0 (RHEL WS and RHEL Desktop are only supported as a developer platform.)
 - SUSE and SUSE Linux Enterprise Server (SLES) 9 (2.6 kernel) service pack 1 (SUSE is only supported as a developer platform.)

- Linux on System p
 - RHEL AS V3.0 Update 6, V4.0
 - SLES 9 (2.6 kernel) service pack 1

- Linux on System z
 - RHEL AS V3.0 Update 6, V4.0 Update 1
 - SLES 9 (2.6 kernel) service pack 1

- IBM AIX® V5.2 ML05
- IBM AIX V5.3 ML02
- IBM i5/OS® V5R3, V5R4
- Hewlett-Packard UNIX® V11iV1, V11iV2
- Sun Solaris 9 with the recommended patch cluster of November 2005 or later, or Sun Solaris 10

Supported Web browsers

- Internet Explorer V6.0 service pack 1 (service pack 2 for Microsoft Windows XP)
- Netscape Communicator V8.1
- Firefox V1.5
- Mozilla V1.7
- Apple Safari 2.0 (limited support)

Supported application servers

- IBM WebSphere Application Server V6.0.2
- IBM WebSphere Application Server Network Deployment V6.0.2
- IBM WebSphere Process Server V6.0.1

Supported databases

- IBM Cloudscape™ 5.1 (included as part of WebSphere Application Server)

continued on next page



Software requirements (continued)

One of the following for extended database coverage

- IBM DB2 Universal Database Enterprise Server Edition V8.1 fix pack 11 or V8.2 fix pack 4
- IBM DB2 Universal Database Workgroup Server Edition V8.1 fix pack 11 or V8.2 fix pack 4
- IBM DB2 for iSeries™ V5R3, V5R4M
- IBM DB2 for z/OS® V7.1, V8.1
- Oracle Database 9i release 2 (must use patch level 9.2.0.5, or greater)
- Oracle Database 10g release 1
- Oracle clustering via RAC
- SQL Server Enterprise 2000 service pack 3, service pack 3a
- SQL Server Standard Edition 2000 service pack 3a

Supported Web servers

- Apache Server V2.0.49, V2.0.52
- IBM HTTP Server V2.0.47.1, V6.0, V6.0.1, V6.0.2
- IBM HTTP Server for iSeries (powered by Apache) V5R3
- IBM Lotus Domino Enterprise Server 6.5.4, 6.5.5, 7.0.1
- Sun Java™ System Web Server V6.0 SP9, 6.1 service pack 3
- Microsoft Internet Information Server 6.0

Supported Lightweight Directory Access Protocol (LDAP) servers

- IBM Tivoli Directory Server V5.2, V6.0
- IBM Tivoli Directory Server for iSeries
- Sun Java System Directory Server V5.2
- Novell eDirectory V8.7.3
- Lotus Domino Enterprise Server V6.5.4, V6.5.5, V7.0.1
- Microsoft Windows Active Directory 2000, 2003, or Microsoft Active Directory Application Mode (ADAM) 2003

Supported content-publishing software

- IBM Workplace Web Content Management V6.0 (included in package)

For more information

To learn more about IBM WebSphere Portal Version 6.0 software, contact your IBM representative or IBM Business Partner, or visit:

ibm.com/websphere/portal

© Copyright IBM Corporation 2006

IBM Corporation
Software Group
Route 100
Somers, NY 10589
U.S.A.

Produced in the United States of America
09-06
All Rights Reserved

AIX, Cloudscape, DB2, DB2 Universal Database, Domino, i5/OS, IBM, the IBM logo, iSeries, Lotus, QuickPlace, Sametime, System i, System p, System z, Tivoli, WebSphere, Workplace, Workplace Forms, Workplace Web Content Management and z/OS are trademarks of International Business Machines Corporation in the United States, other countries or both.

Java and all Java-based trademarks are trademarks of Sun Microsystems, Inc. in the United States, other countries or both.

Linux is a registered trademark of Linus Torvalds in the United States, other countries or both.

Microsoft and Windows are trademarks of Microsoft Corporation in the United States, other countries or both.

UNIX is a registered trademark of The Open Group in the United States and other countries.

Other company, product and service names may be trademarks or service marks of others.

The information contained in this documentation is provided for informational purposes only. While efforts were made to verify the completeness and accuracy of the information contained in this documentation, it is provided "as is" without warranty of any kind, express or implied. In addition, this information is based on IBM's current product plans and strategy, which are subject to change by IBM without notice. IBM shall not be responsible for any damages arising out of the use of, or otherwise related to, this documentation or any other documentation. Nothing contained in this documentation is intended to, nor shall have the effect of, creating any warranties or representations from IBM (or its suppliers or licensors), or altering the terms and conditions of the applicable license agreement governing the use of IBM software.

* Use restrictions apply to IBM components included with this offering.