

E18

# Web Enabling IMS Transactions with IMS Connector for Java

Judith Hill



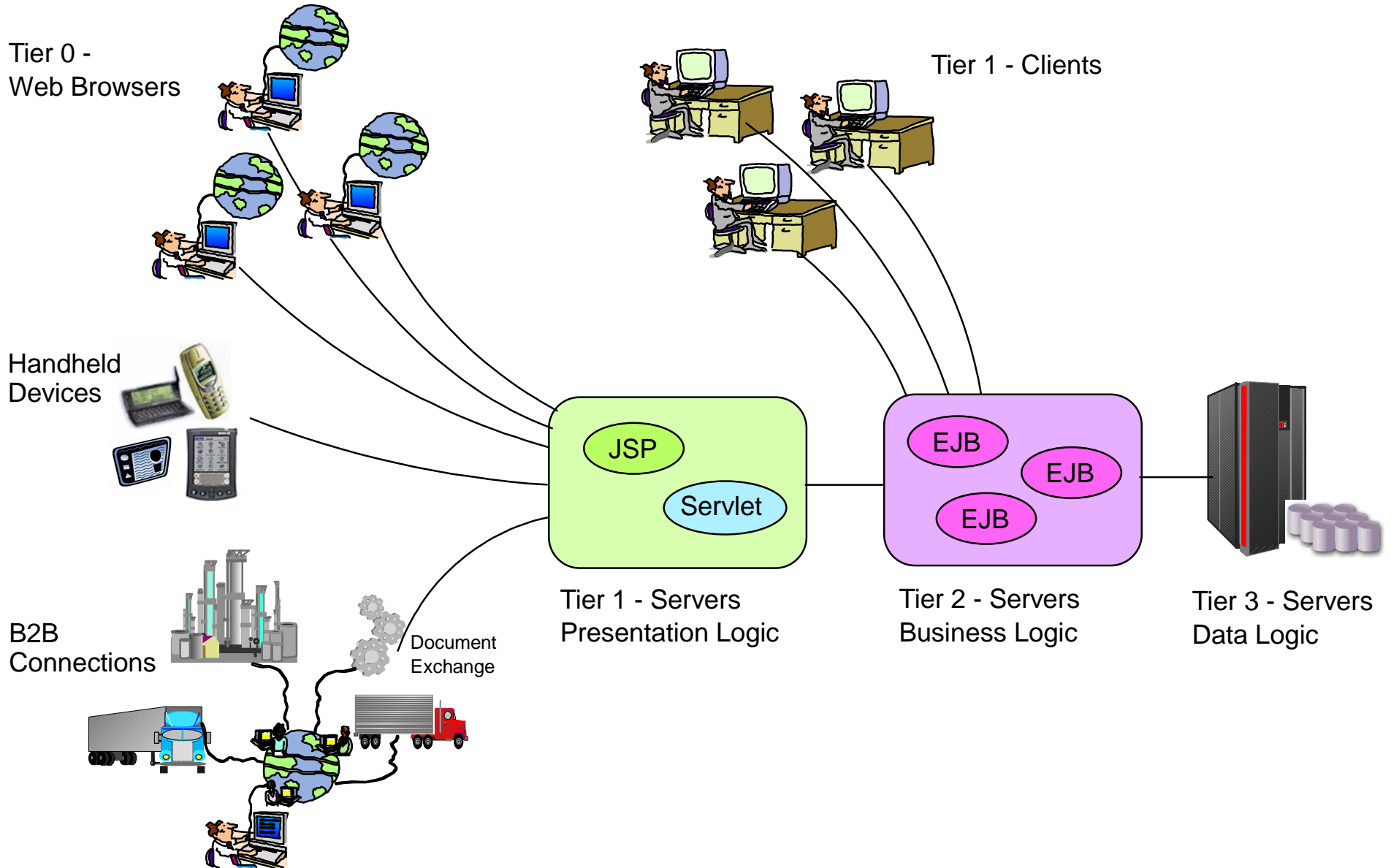
St. Louis, MO

Sept. 30 - Oct. 3, 2002

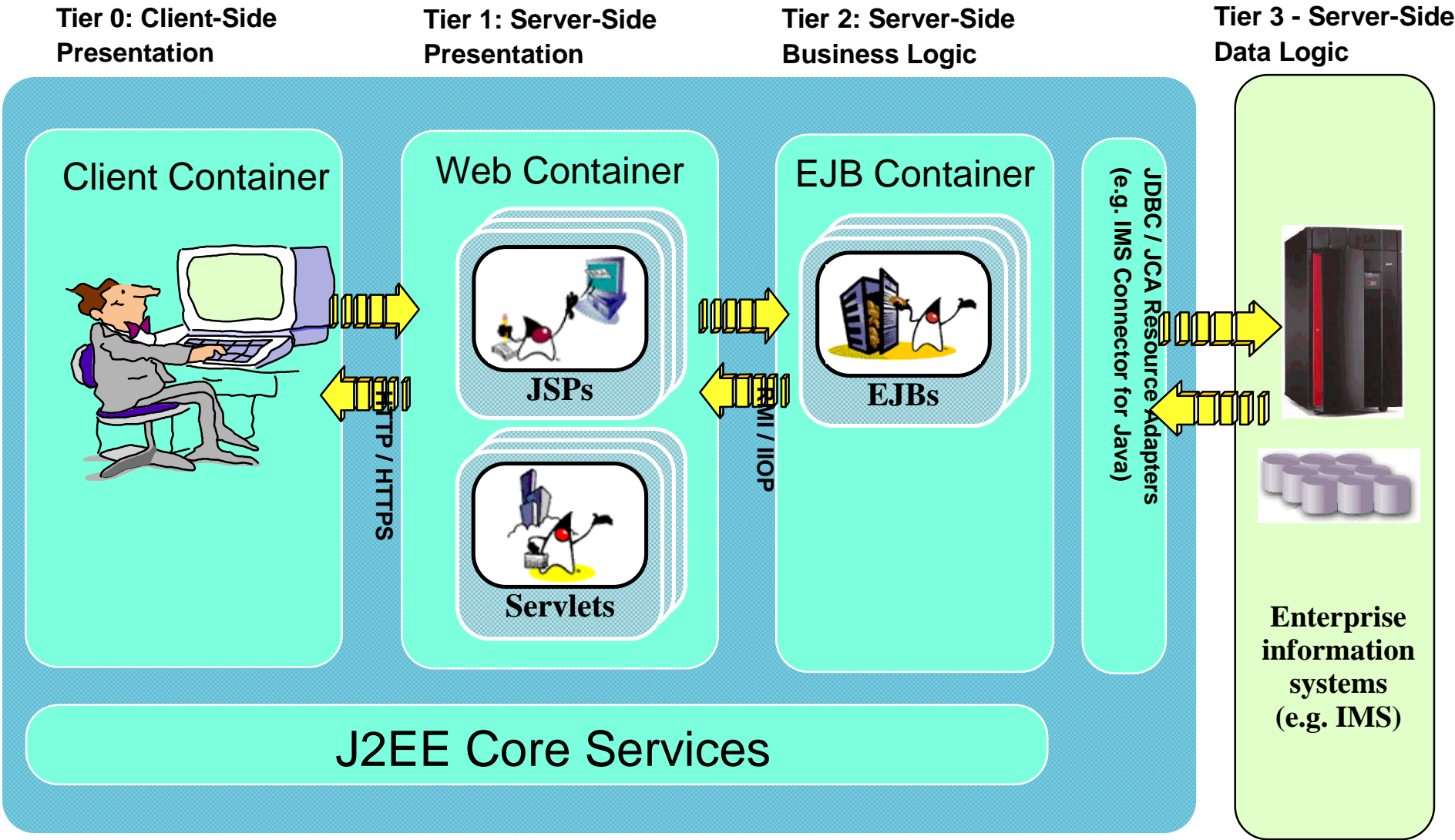
# Agenda

- J2EE Connector Architecture
- IMS Connector for Java Overview
- Recent IMS Connector for Java Enhancements
  - ▶ Global Transaction (two-phase commit) support
  - ▶ Container-Managed Security
  - ▶ Services programming model
  - ▶ WebSphere Studio Application Developer Integration Edition
    - Demo

# Multi-tier Application Environments



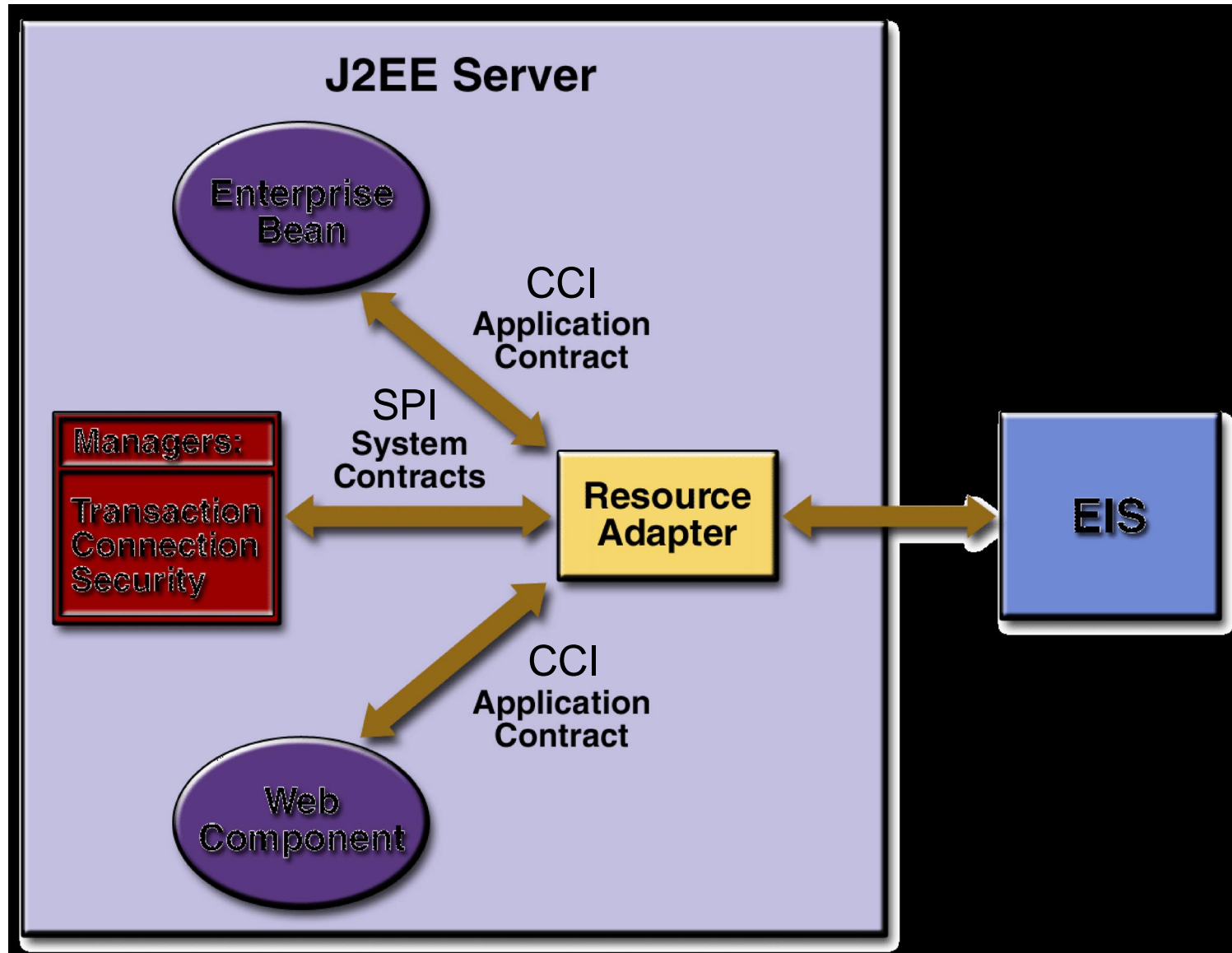
# J2EE Server Model



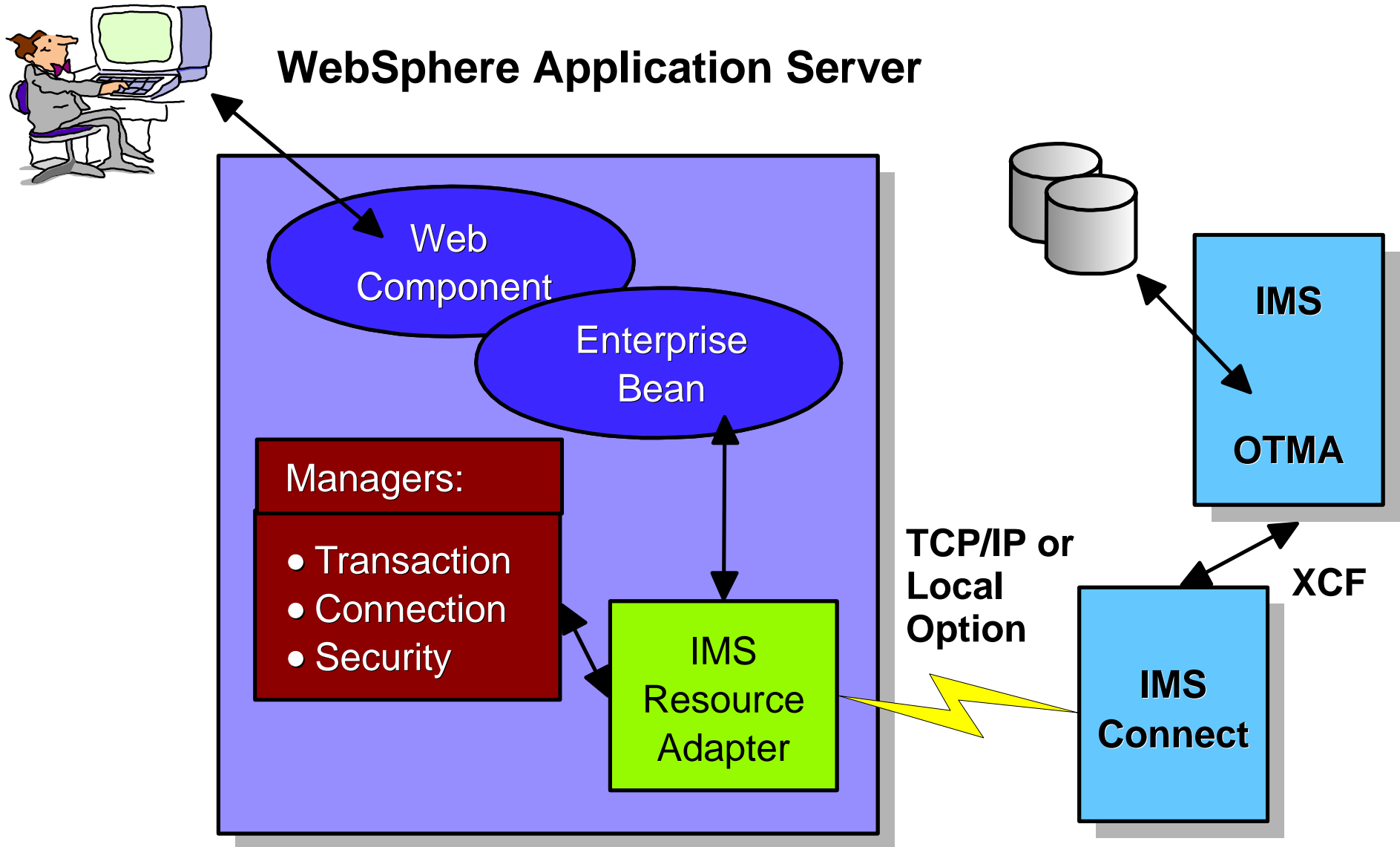
# J2EE Connector Architecture

- A standard architecture for Enterprise Information Systems (EIS) integration
- Connects the J2EE platform to heterogeneous EISs
- Defines a common set of interfaces (SPI and CCI) that standardizes interactions between
  - ▶ Resource adapters
  - ▶ Application servers
  - ▶ Application components
- Simplifies application component development
- No longer need to customize a connector for each application server, and vice versa

# J2EE Connector Architecture

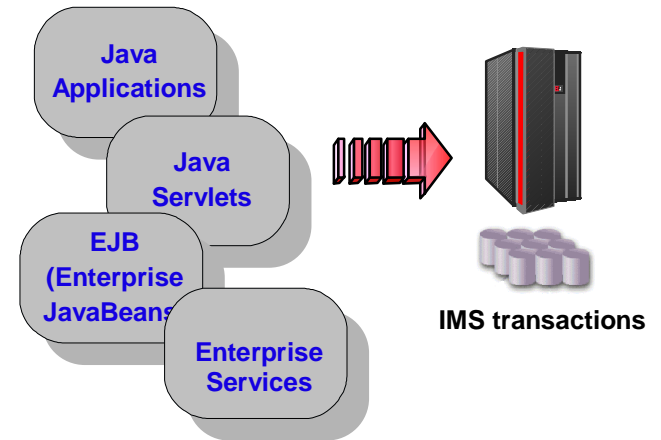


# IMS Connector for Java



# IMS Connector for Java

Helping IMS Users make the transition to e-business easier



- Offers a highly scalable and flexible topology
- A J2EE Connector Architecture compliant resource adapter
- Used to develop and run J2EE applications that access IMS transactions via **IMS Connect**
- Supports rapid application development with **WebSphere Studio Application Developer Integration Edition**
- Runs in **WebSphere Application Server** on both z/OS and distributed platforms



# Recent Releases

Version	Description	Development Environment	Runtime Environment
1.2.0/1.2.1(NLV)	<ul style="list-style-type: none"> <li>• Adds J2EE Connector Architecture support for distributed platforms</li> </ul>	VisualAge for Java 4.0	WAS 4.0 for Windows, AIX, Solaris, Linux for z/OS
1.2.2/1.2.3 (NLV)	<ul style="list-style-type: none"> <li>• Adds J2EE Connector Architecture support for z/OS platform</li> <li>• Adds Two-Phase Commit Support for z/OS platform (via Local Option)</li> </ul>	VisualAge for Java 4.0	WAS 4.0.1 for z/OS
1.2.4/1.2.5 (NLV)	<ul style="list-style-type: none"> <li>• Adds web services support for distributed platforms</li> </ul>	WSAD IE 4.1	WAS EE 4.1 for Windows, AIX, Solaris

# Recent IMS Connector Enhancements

- Global Transaction (two-phase commit) support
- Container-Managed Security
- Services programming model
- A new development environment:
  - ★ *WebSphere Studio Application Developer Integration Edition*

# What is a Transaction ?

- A transaction is a group of changes that are either fully completed or fully rolled back.
  - ▶ For example, a financial program might transfer funds from a checking account to a savings account with the following steps:
    - Begin Transaction
      - Debit checking account
      - Credit savings account
    - Commit Transaction
  - ▶ Either both of these steps must complete, or none of them

# Types of Transactions

- There are two types of transactions:
  - ▶ **Global**
    - One or more resource managers are involved in the group of changes
    - An external coordinator is used to coordinate the changes
    - If more than one resource manager is involved in a transaction, two phase commit processing is used to coordinate the changes
  - ▶ **Local**
    - Only one resource manager is involved in the group of changes
    - The resource manager is responsible for coordinating the changes
- **J2EE applications**
  - Use JTA (Java Transaction API) interfaces to demarcate Global transactions
  - Use CCI LocalTransaction to demarcate Local transactions

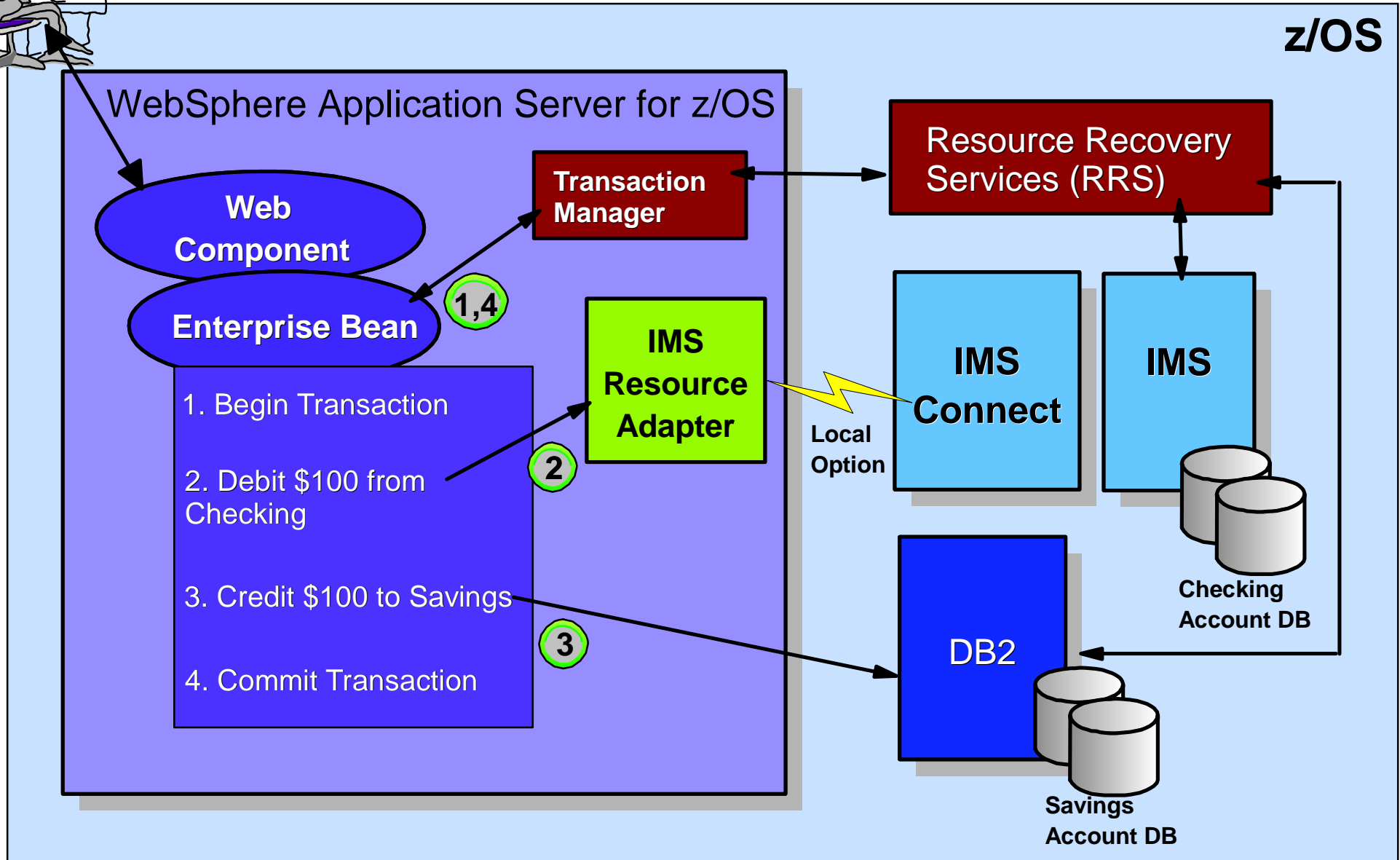
# IMS Connector for Java Transaction Support

- Allows applications to use **JTA** interfaces to participate in **global** transaction and two-phase commit processing
- The initial transaction offering is available with IMS Connector for Java version 1.2.2
  - ▶ Exploits WebSphere Application Server on z/OS and RRS
  - ▶ Via Local Option connection only
  - ▶ IMS Connect, WebSphere Application Server and IMS must reside in the same MVS image

# IMS Connector for Java Transaction Support



Transfer \$100 from  
Checking to Savings



# JCA Security Options

- When an application component requests a connection to an EIS resource, the EIS may require a security sign-on
- An application has two choices for EIS Sign-on
  - ▶ **Container-Managed**
    - The container (J2EE Server) provides the security information to the resource adapter for EIS Sign-on
    - The security information is provided to the J2EE server using the J2EE server's administrative/deployment tool
  - ▶ **Component-Managed**
    - The component (J2EE application) provides the security information to the resource adapter for EIS Sign-on
    - The security information is provided in the application code

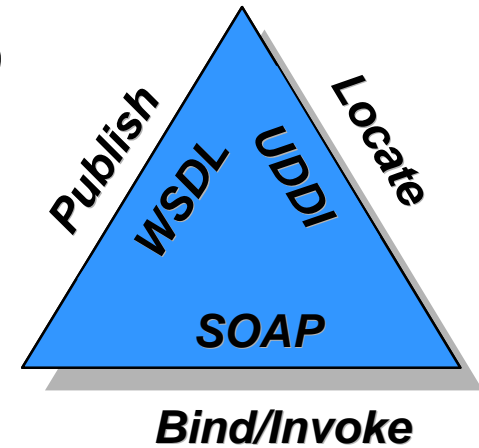
# IMS Connector for Java Container-Managed Security Support

- Allows the application to use Container-Managed Sign-on in WebSphere Application Server for z/OS
  - ▶ Easier to maintain security information
  - ▶ No need to recompile code when changing security information
- Available with IMS Connector for Java version 1.2.2
  - ▶ Via Local Option connection only



# What are Web Services ?

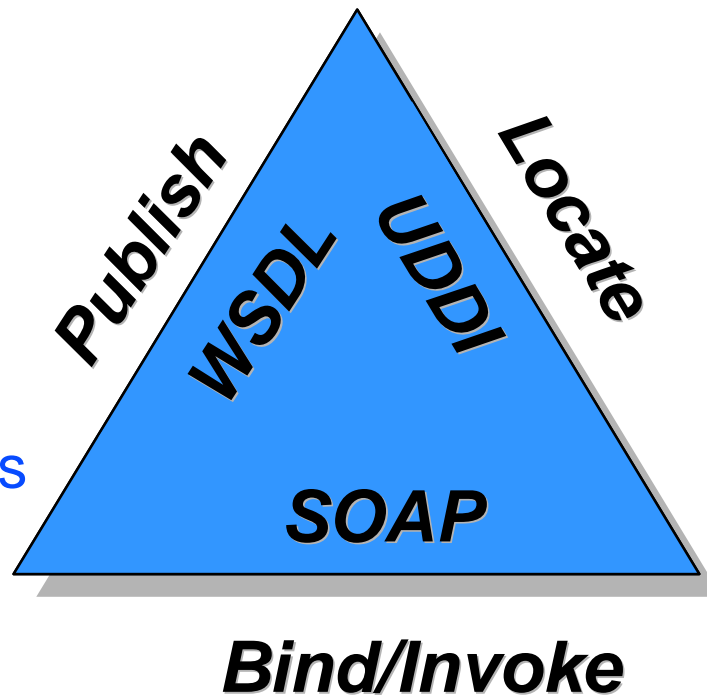
- "Web services" is how businesses describe functionality (services) they want to externalize
- Web services allow businesses to
  - ▶ **Publish** services across the Web
  - ▶ **Locate** services across the Web
  - ▶ **Invoke** services across the Web
- Web services use simple, standard interfaces for
  - ▶ Publishing and discovering services
  - ▶ Communicating between service provider and service requester in a platform-independent way



# Key Functions of Web Services

## Service Broker

- A searchable repository of service descriptions
- Service Providers publish their services
- Service Consumers find services



## Service Provider

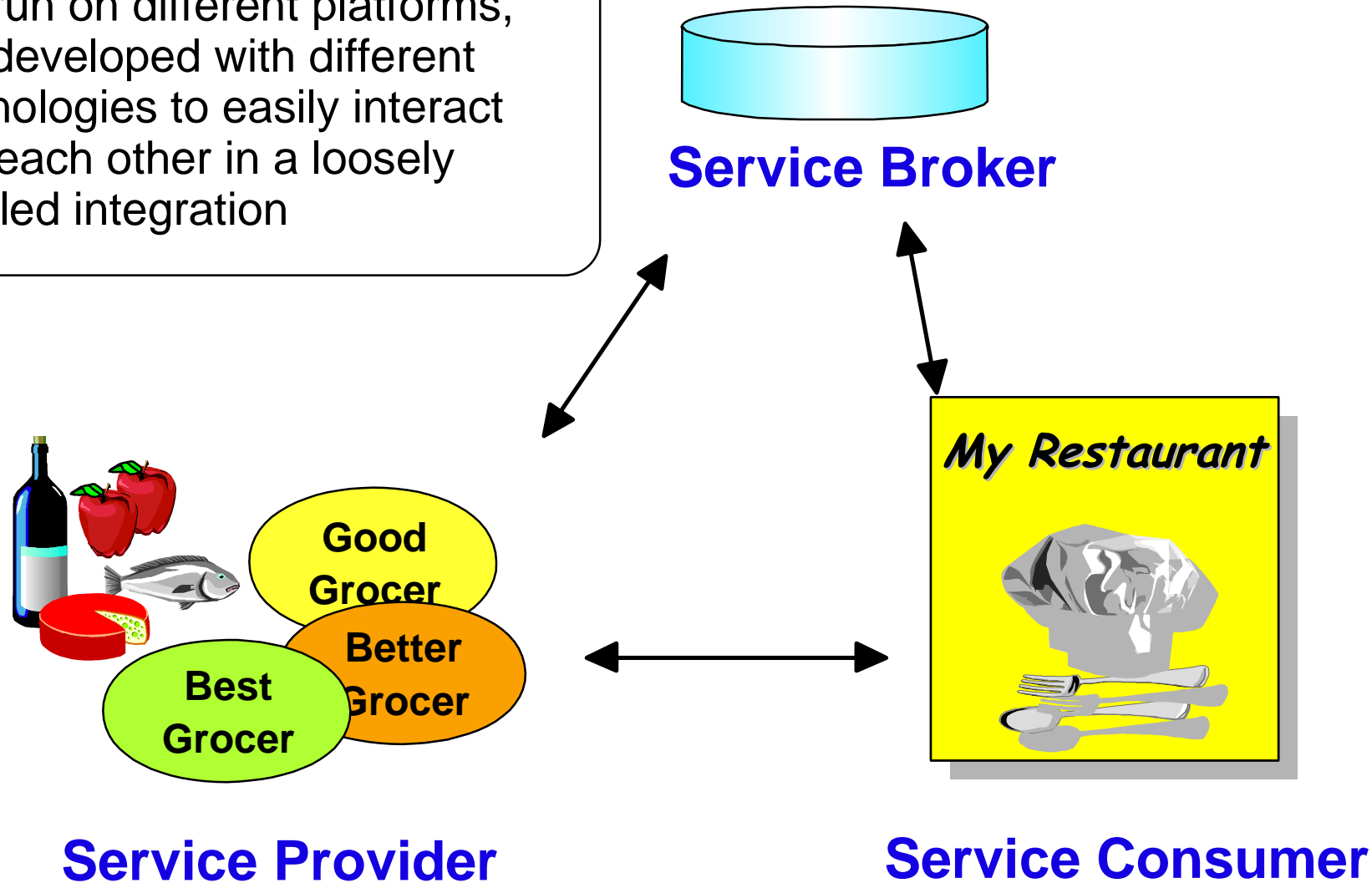
- Provides applications as Web Services
- Publishes their services

## Service Consumer

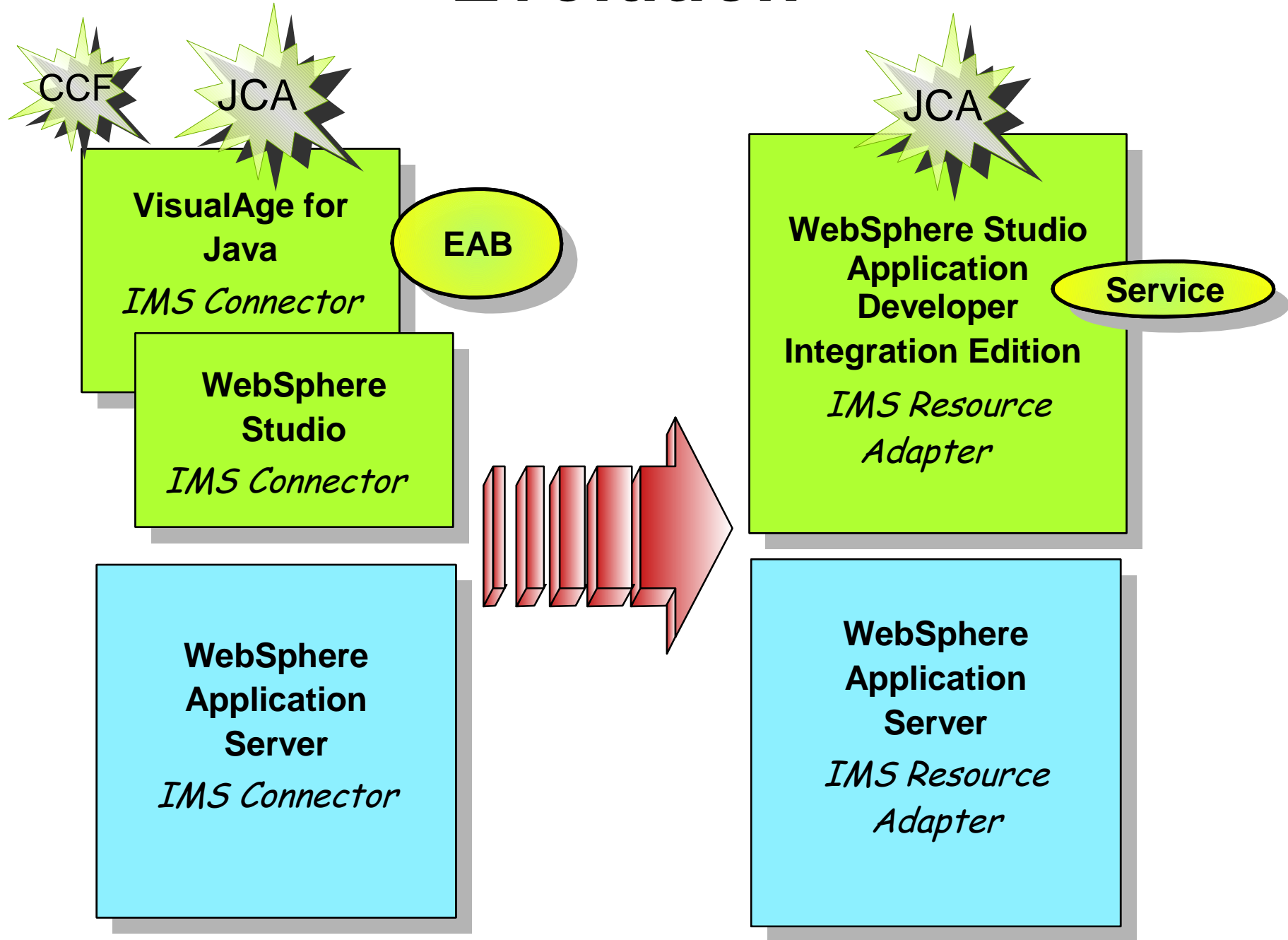
- A client that needs a service
- Publishes their needs

# Why Web Services ?

Web Services allow applications that run on different platforms, and developed with different technologies to easily interact with each other in a loosely coupled integration



# Evolution



# WebSphere Tooling

Application Developer Integration Edition (WSAD IE)

Application Developer (WSAD)

Site Developer (WSSD)

- **WAS AE(s)**
- **Web Developer**

- **WAS AE(s)**
- **Basic J2EE Developer**

- **WAS EE**
- **Advanced J2EE Developer**

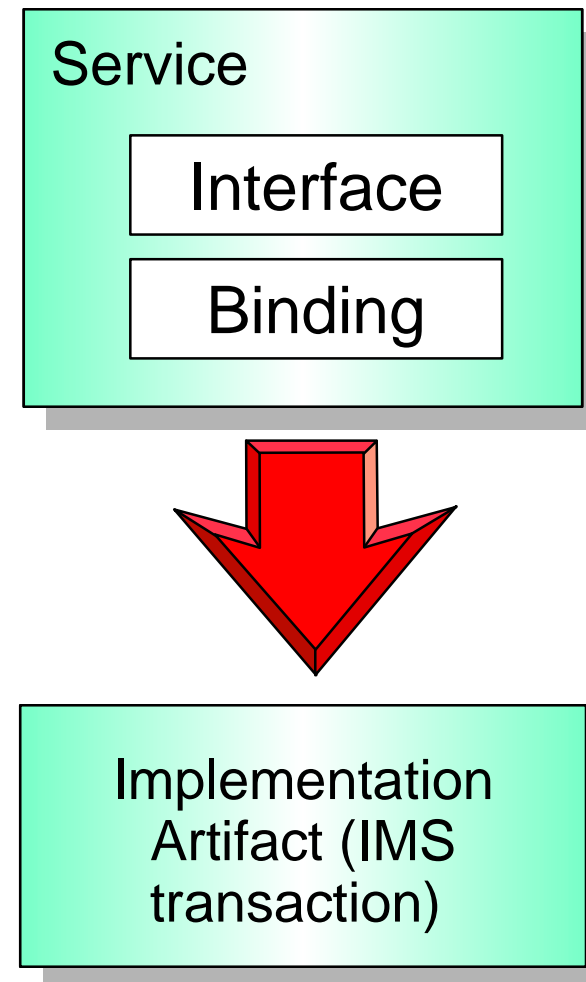
WebSphere Studio Platform

- **IBM's commercially supported version of Eclipse Workbench**

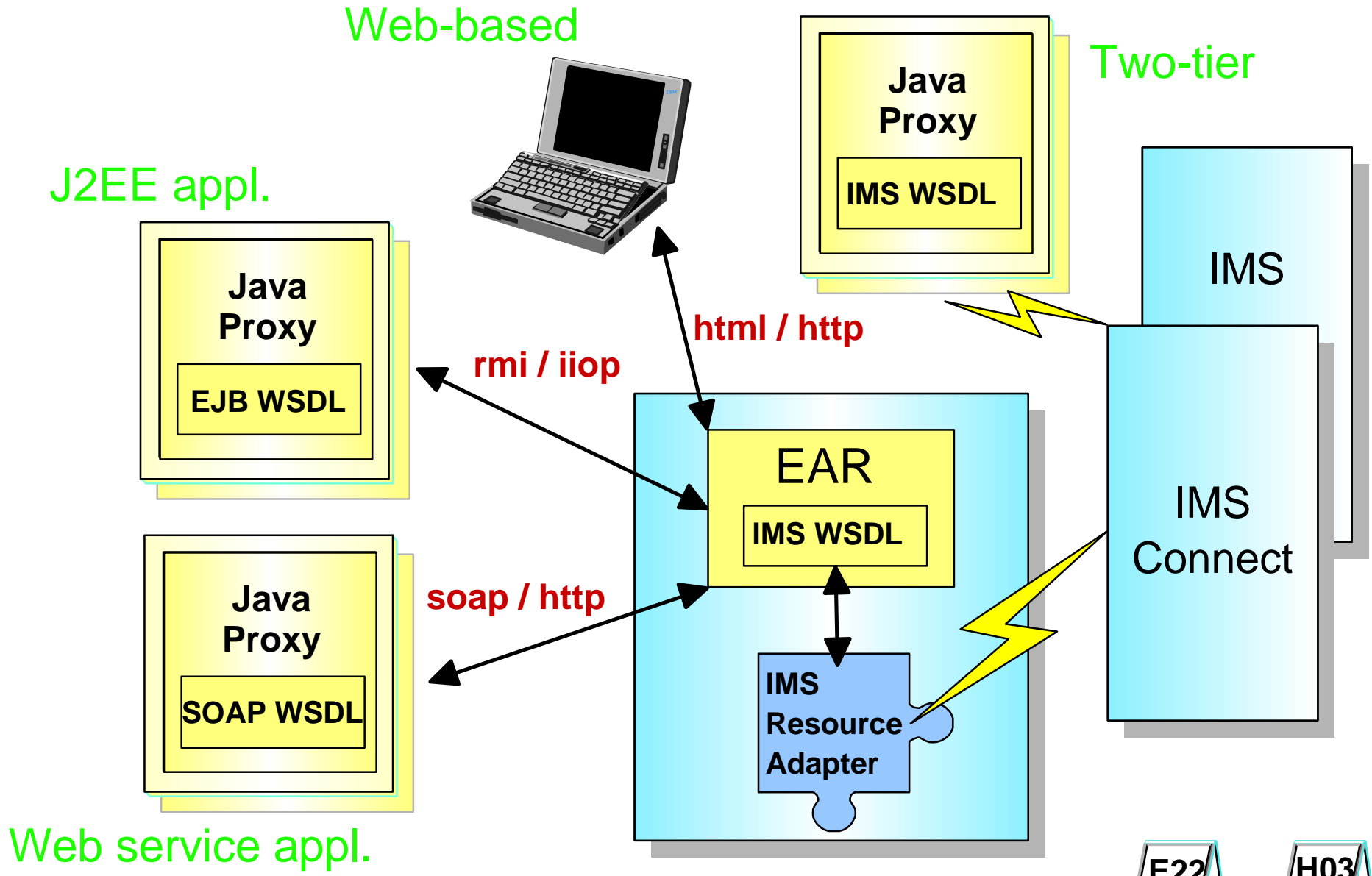
Eclipse Workbench

# Enterprise Services

- WSAD IE is based on the concept of **Enterprise services**
- A service consists of three parts:
  - ▶ **Implementation** artifact
    - IMS transactions, EJBs, ...
  - ▶ **Interface**
    - Describes the available **operations** and the **messages** they exchange
  - ▶ **Binding**
    - Describes how to get to the implementation artifact
- Services are described by WSDL documents



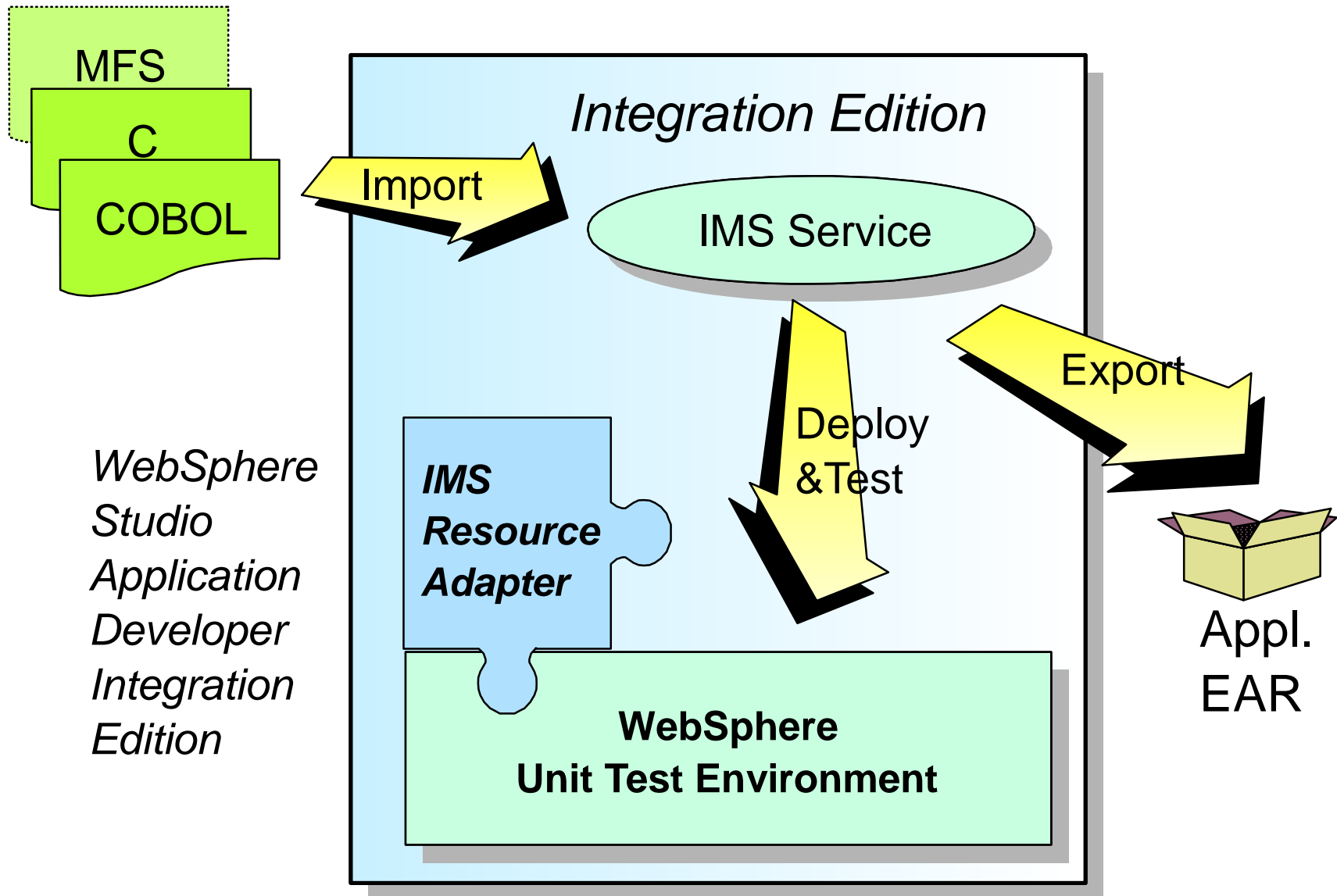
# Application Models



See also

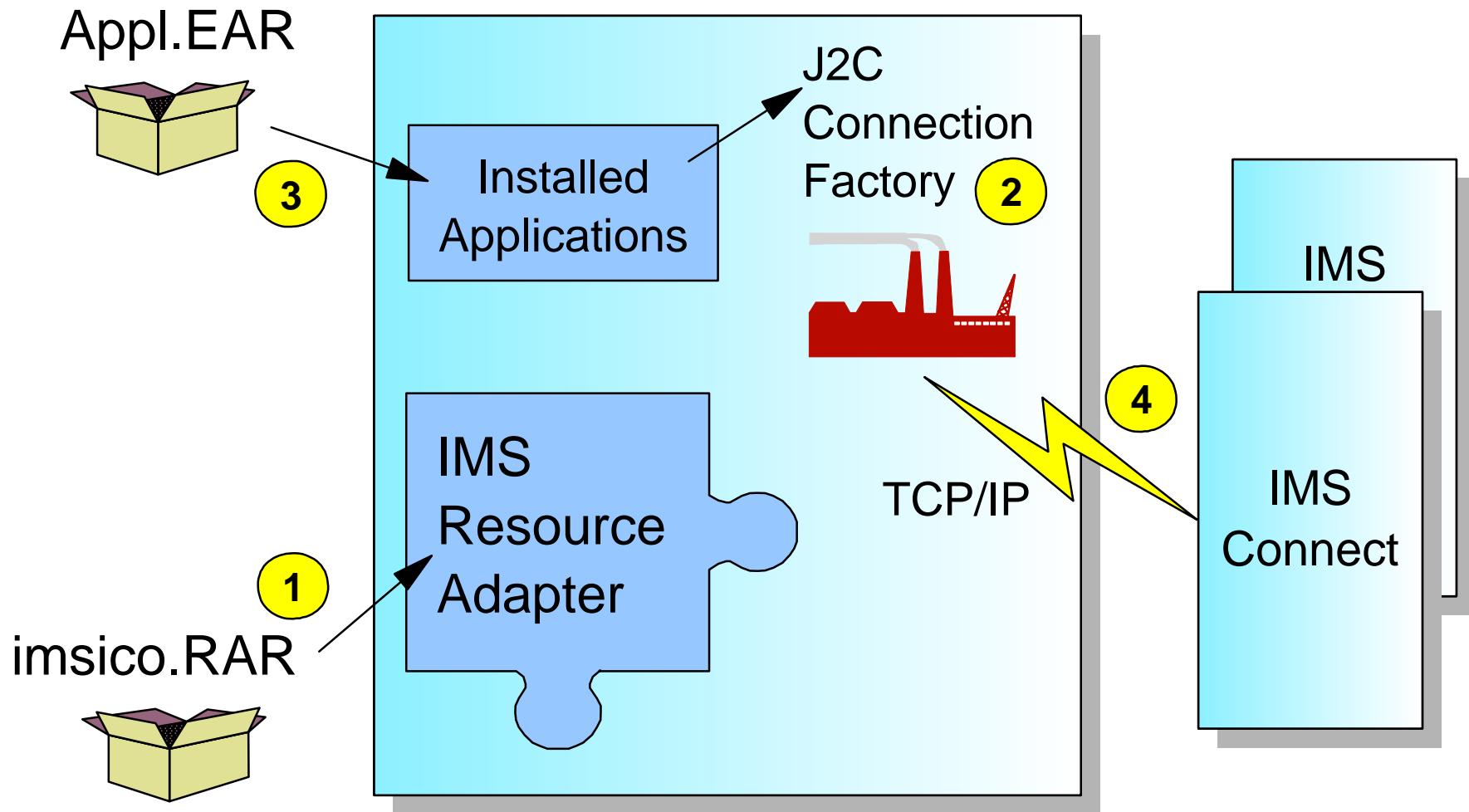


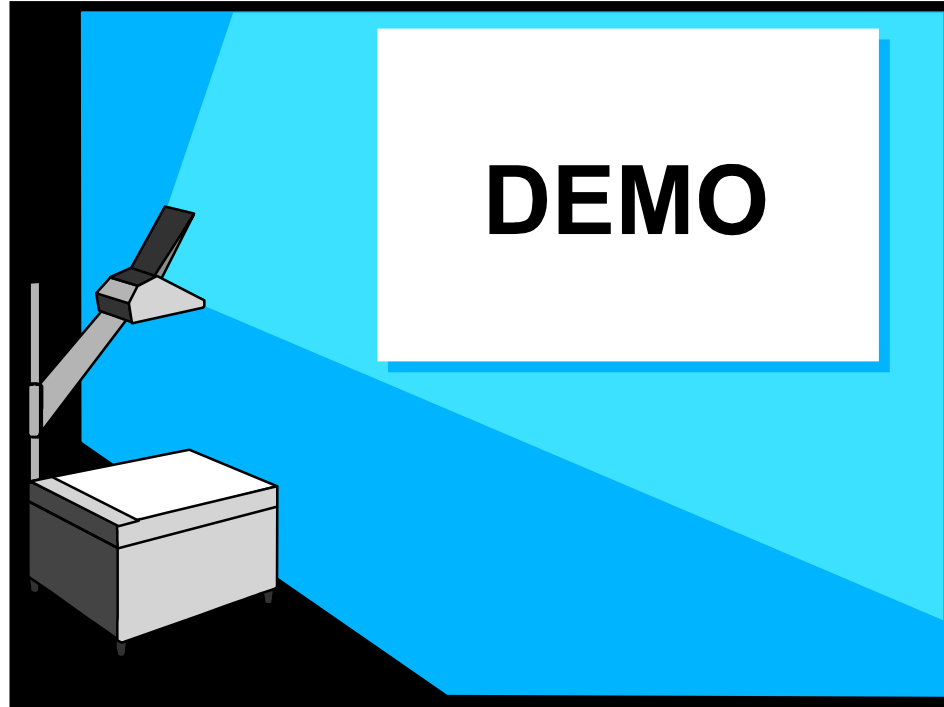
# WSAD IE Development

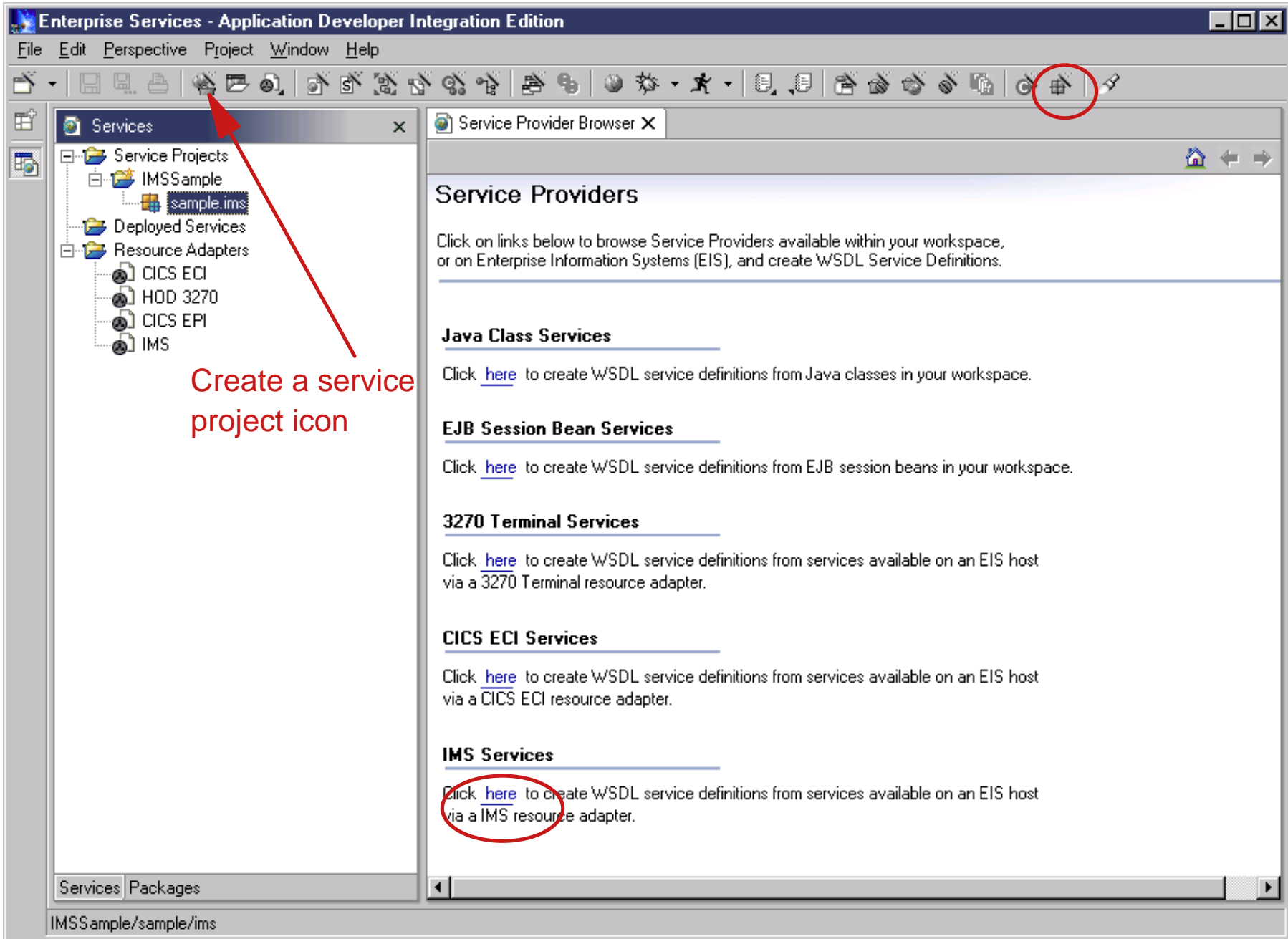




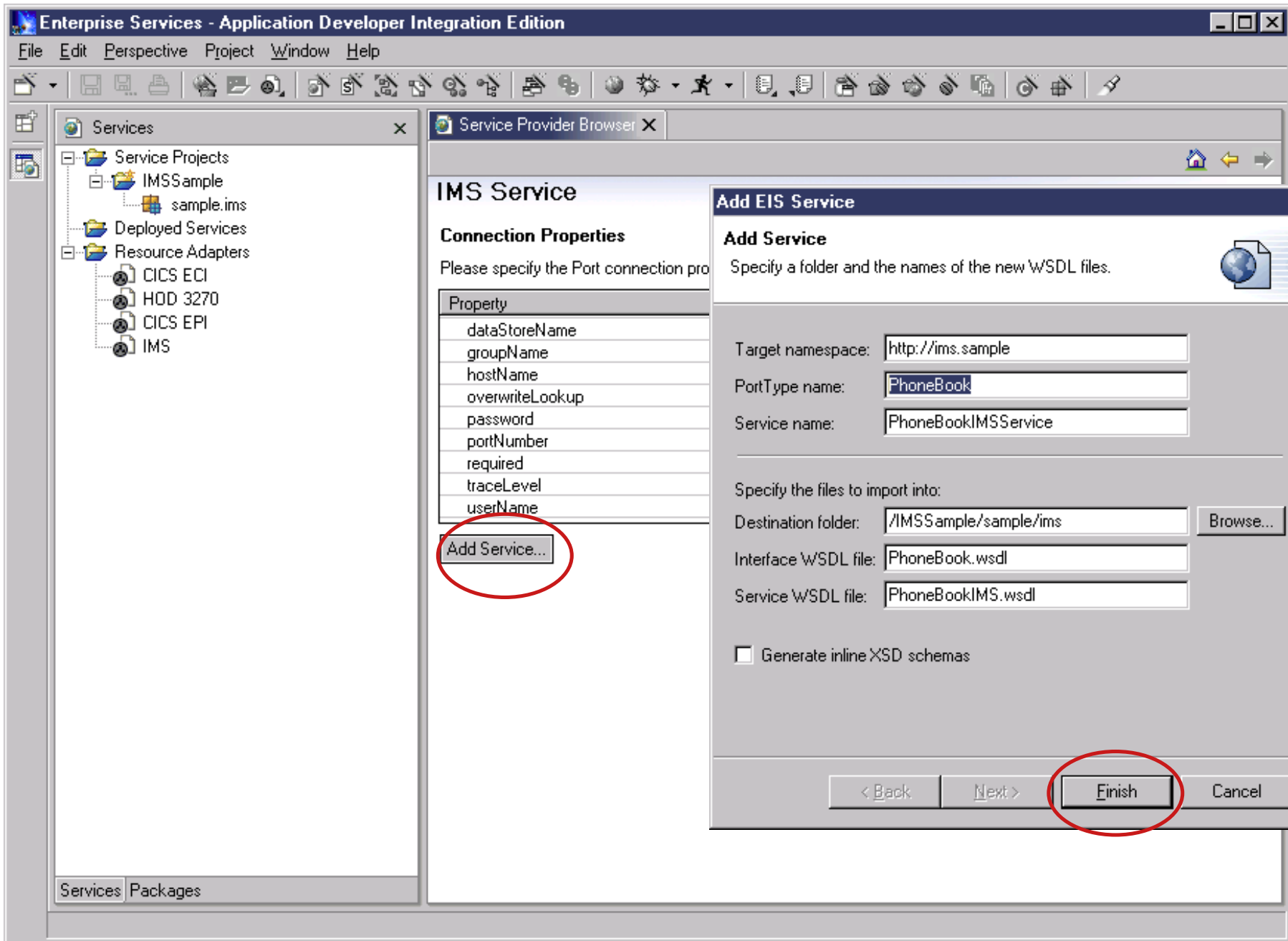
# WebSphere Application Server Runtime

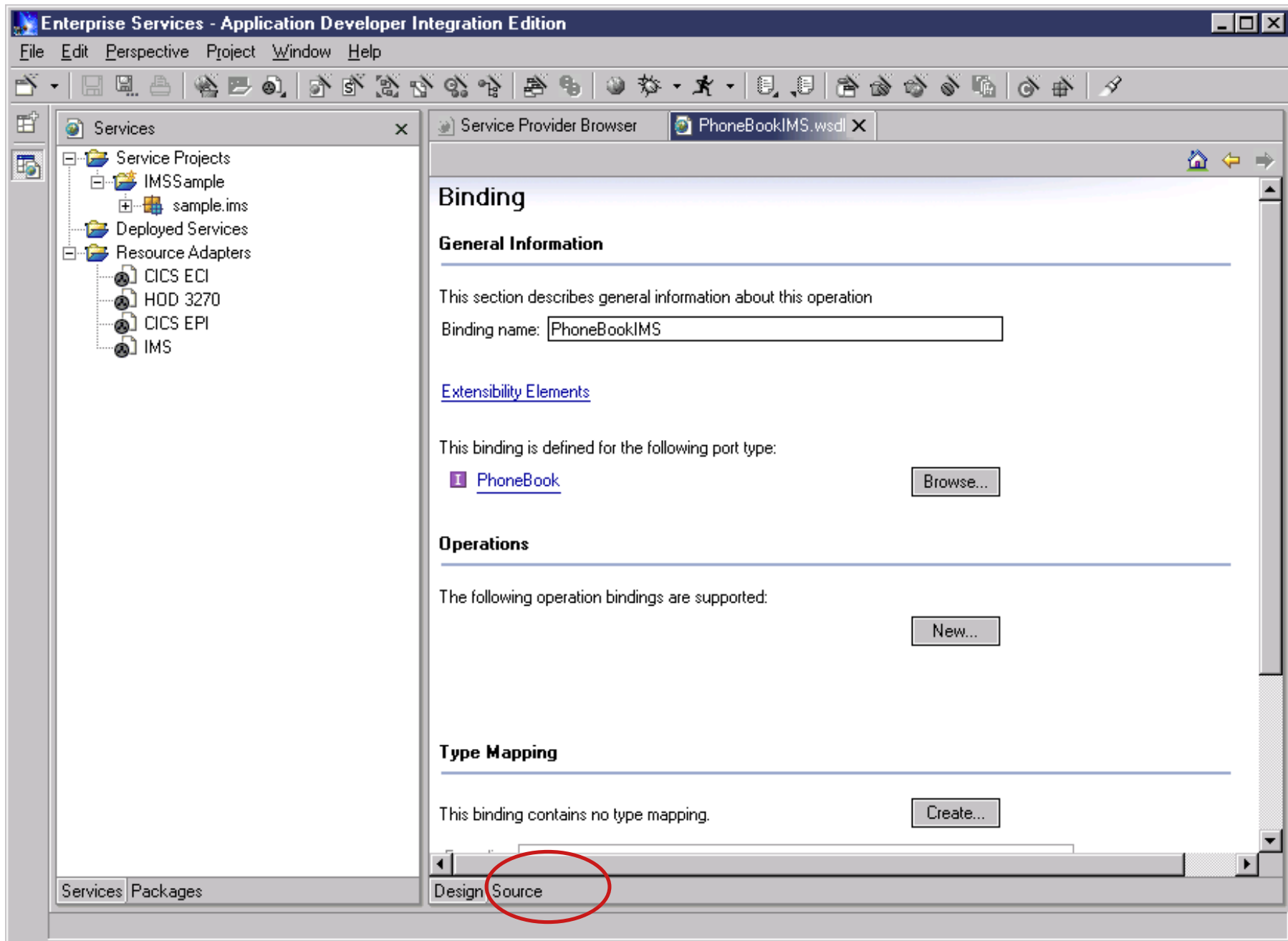


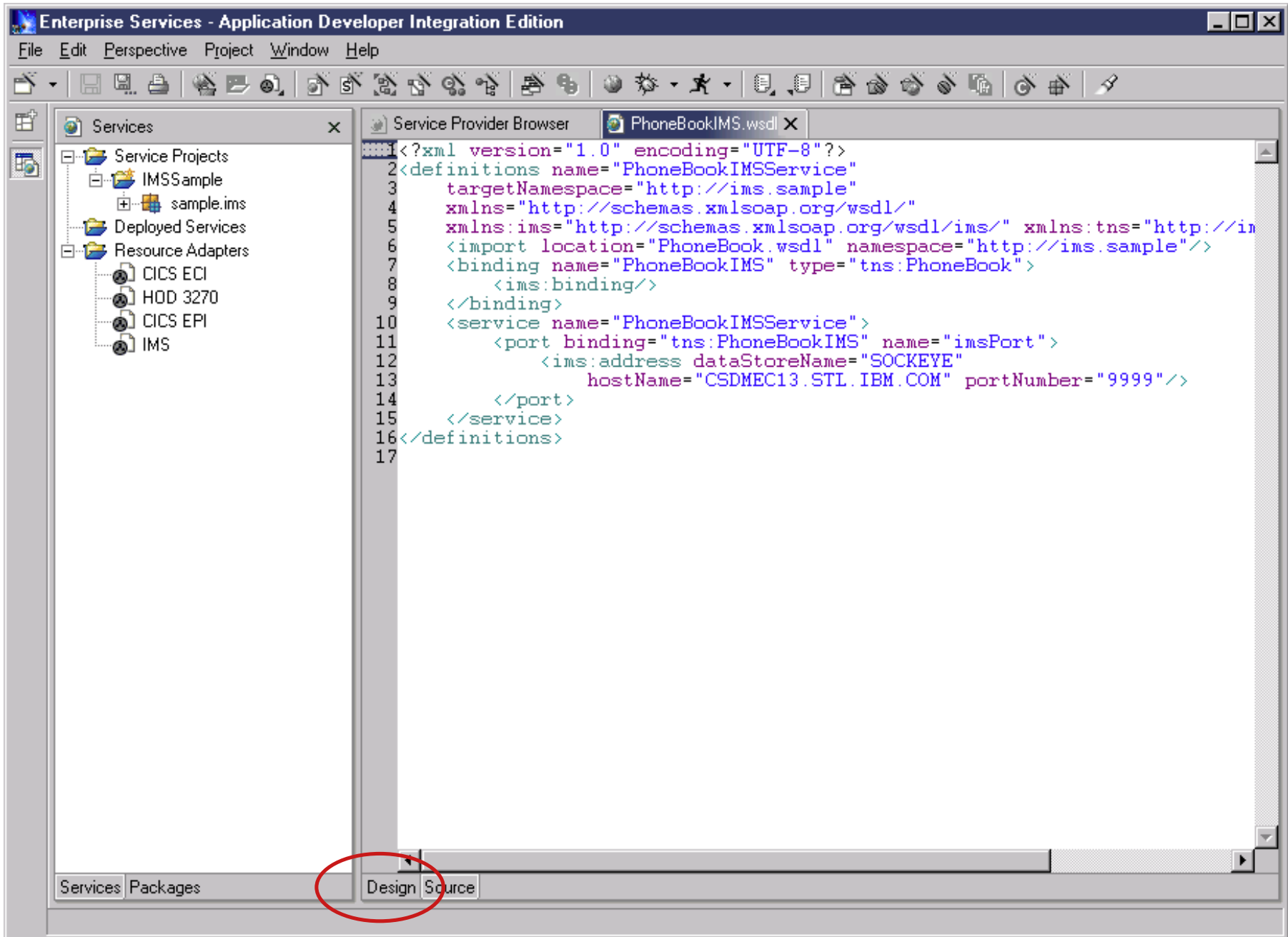


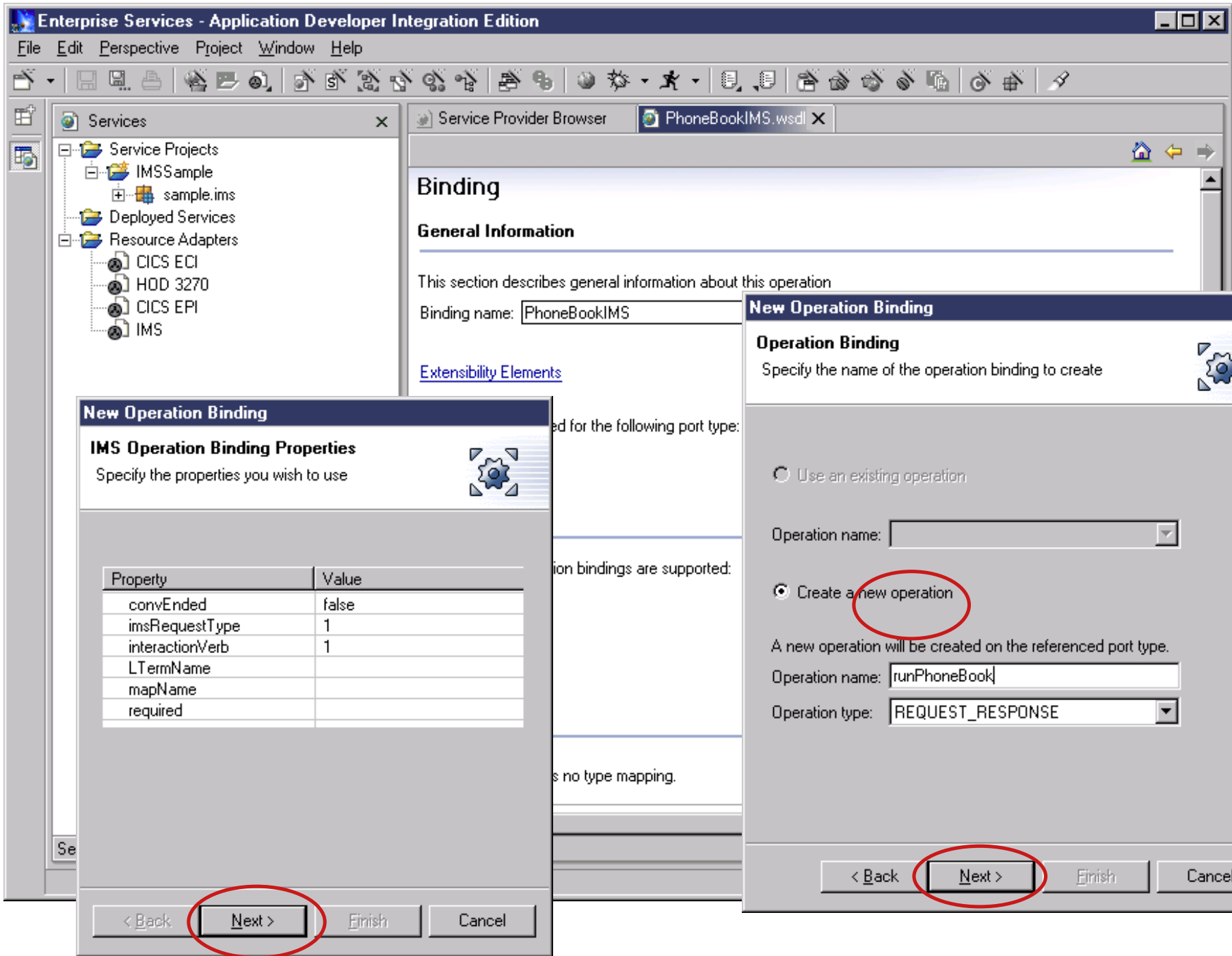


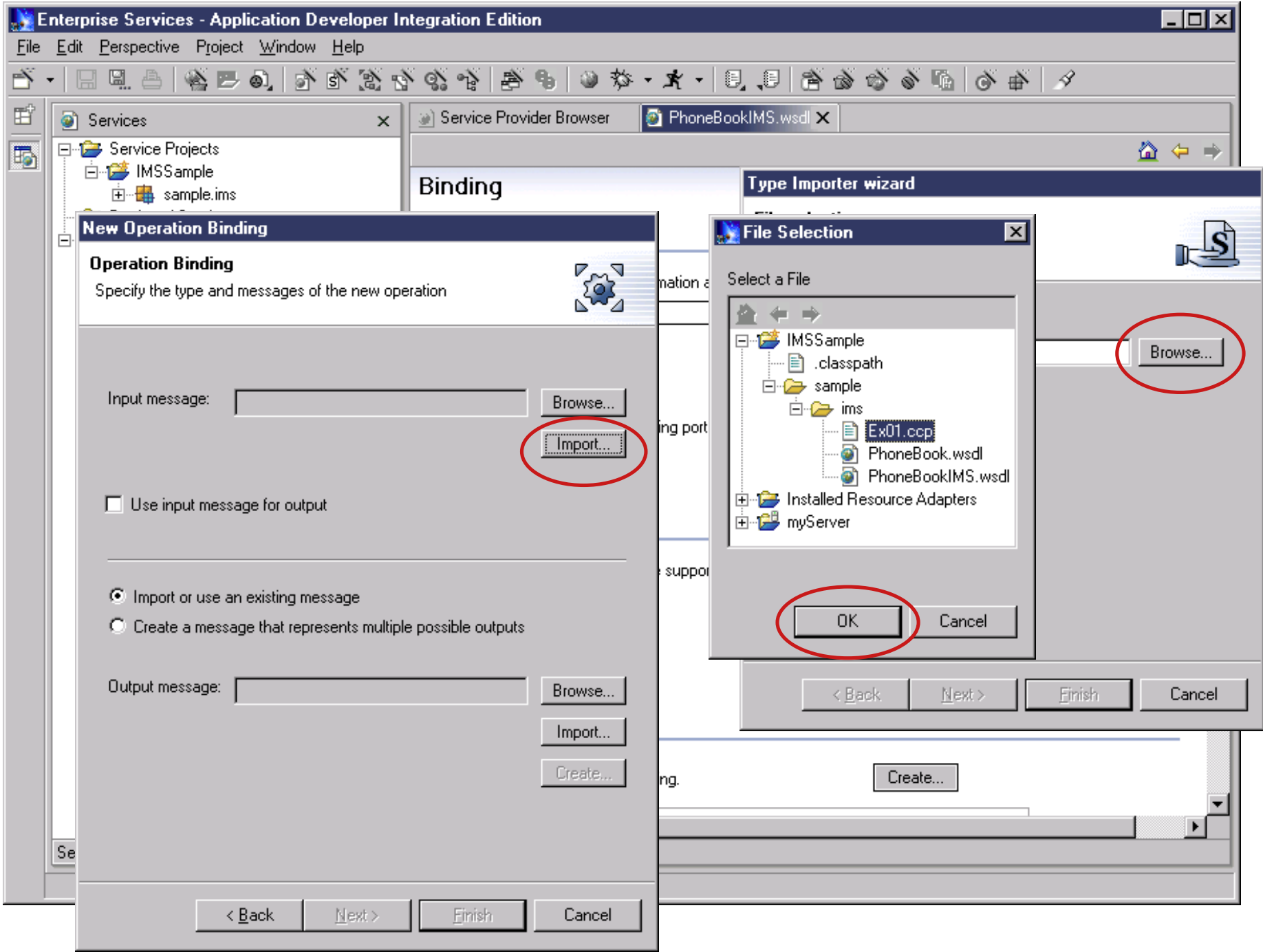
Create a service project icon



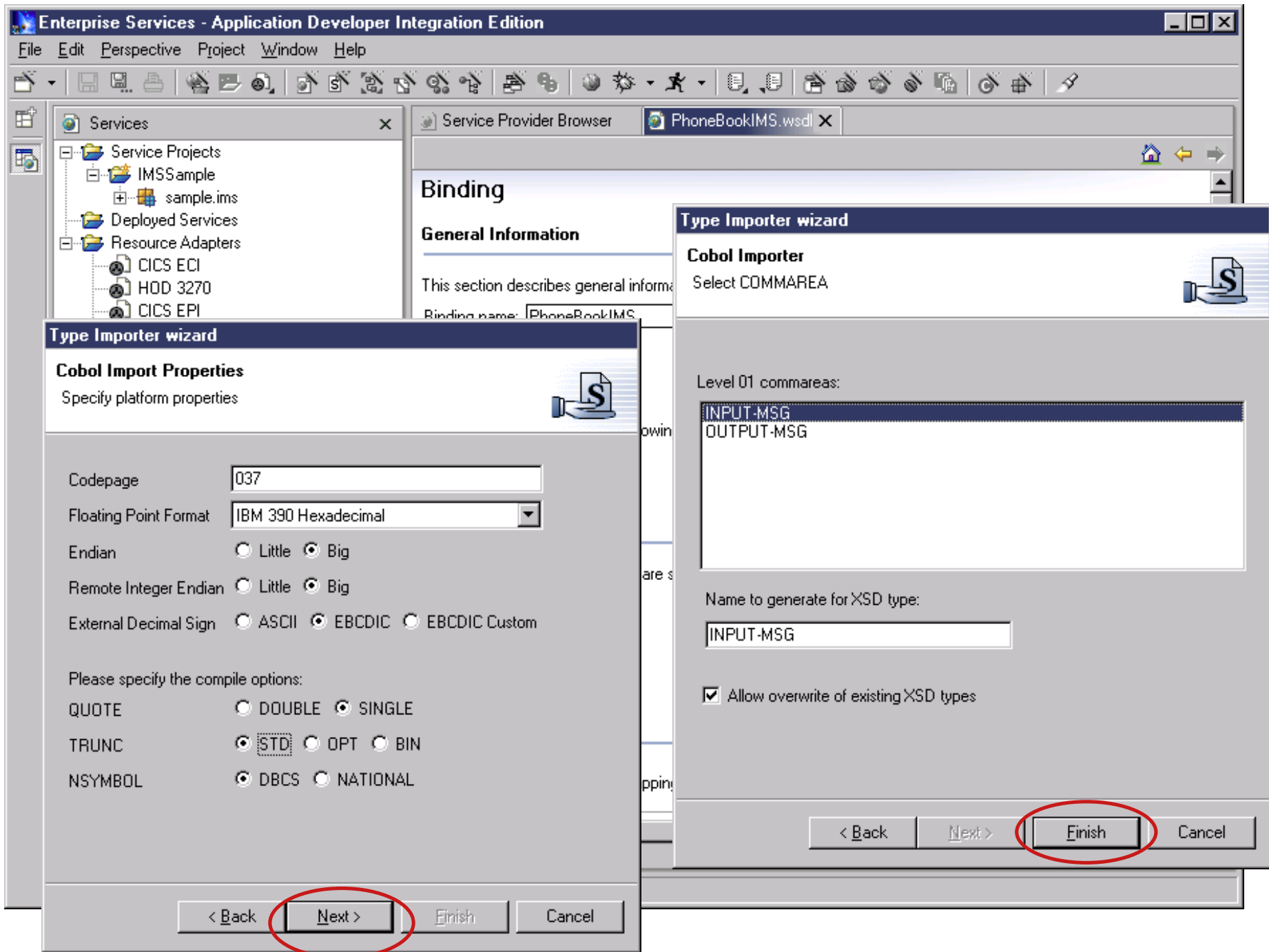


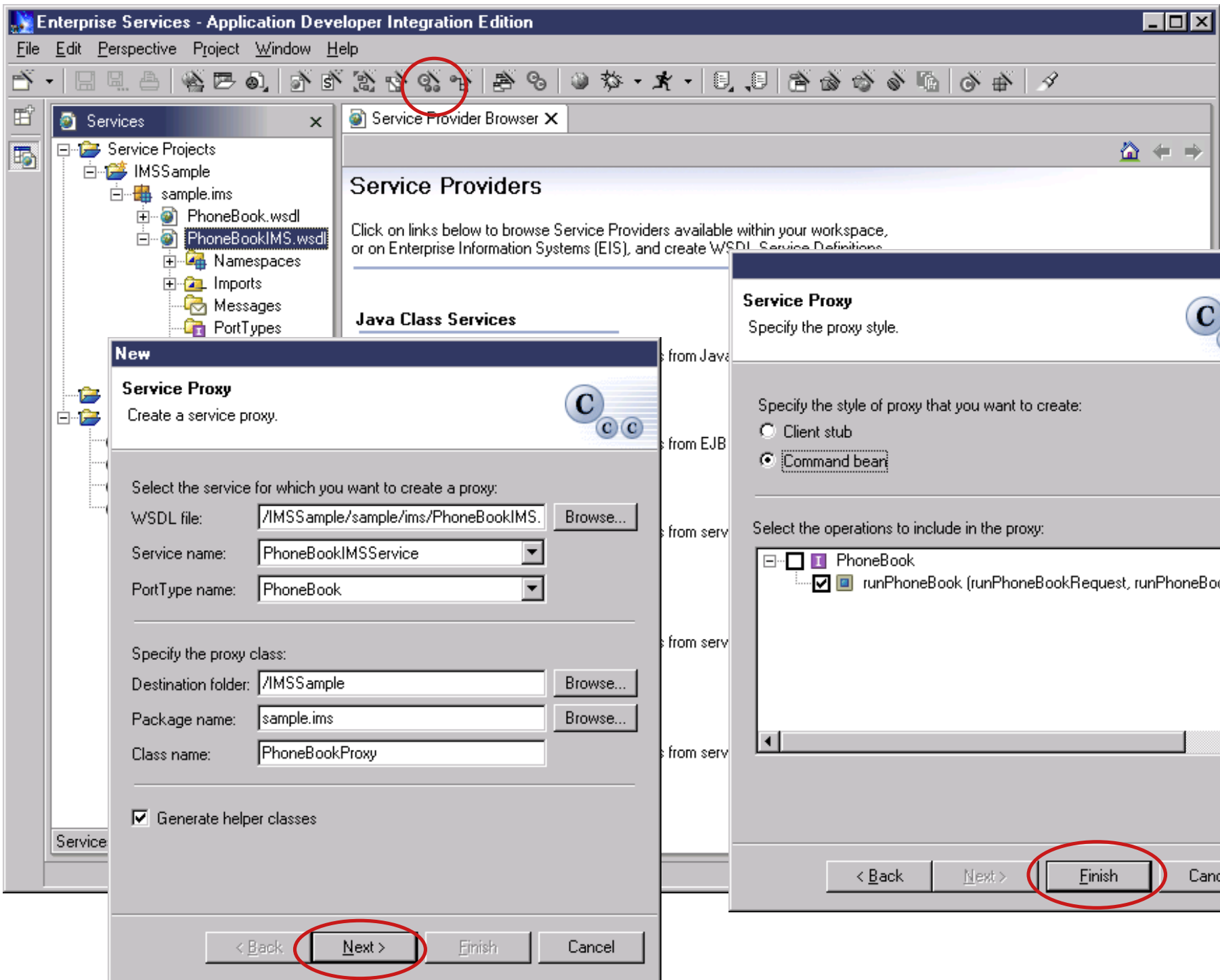


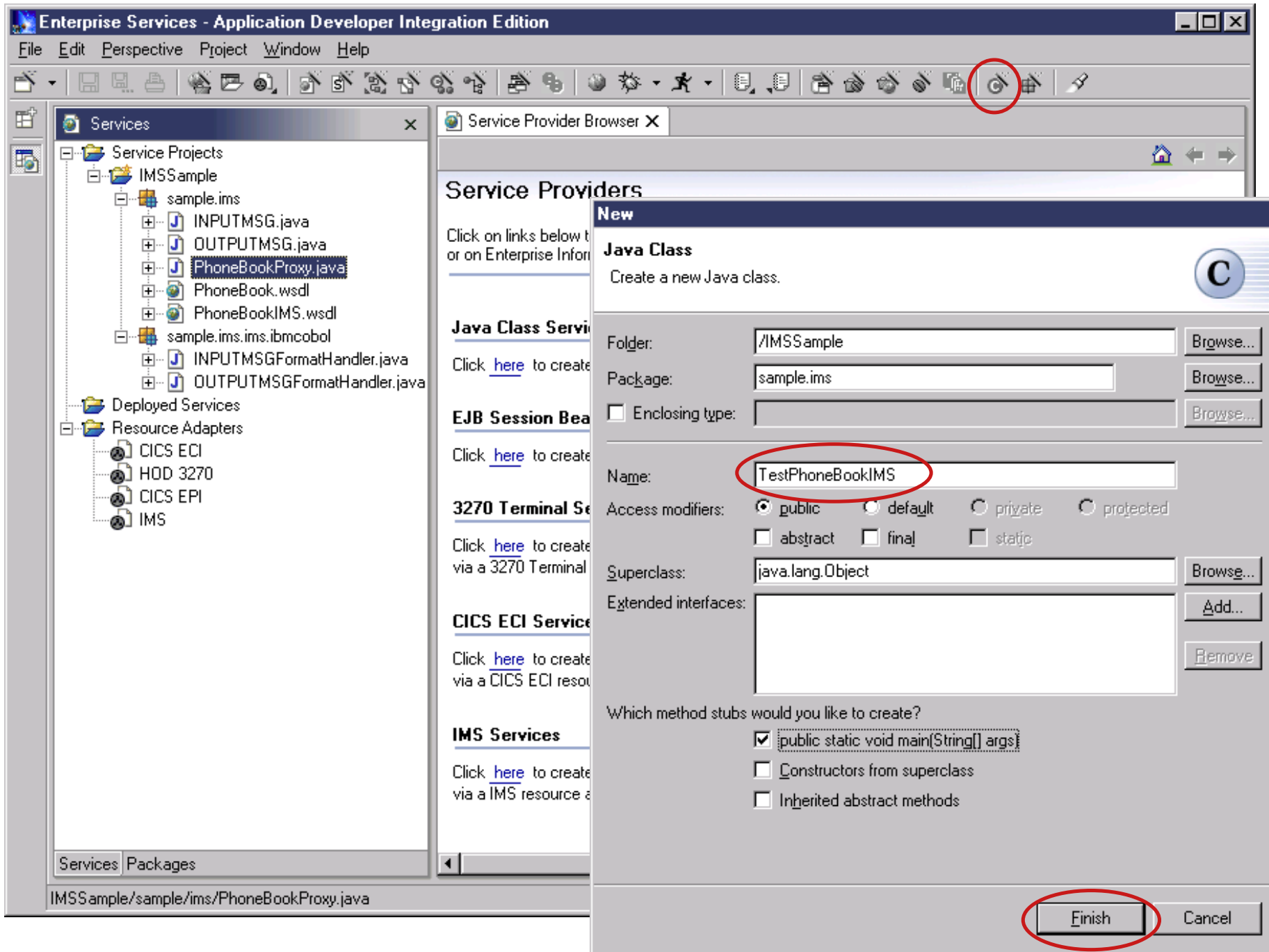


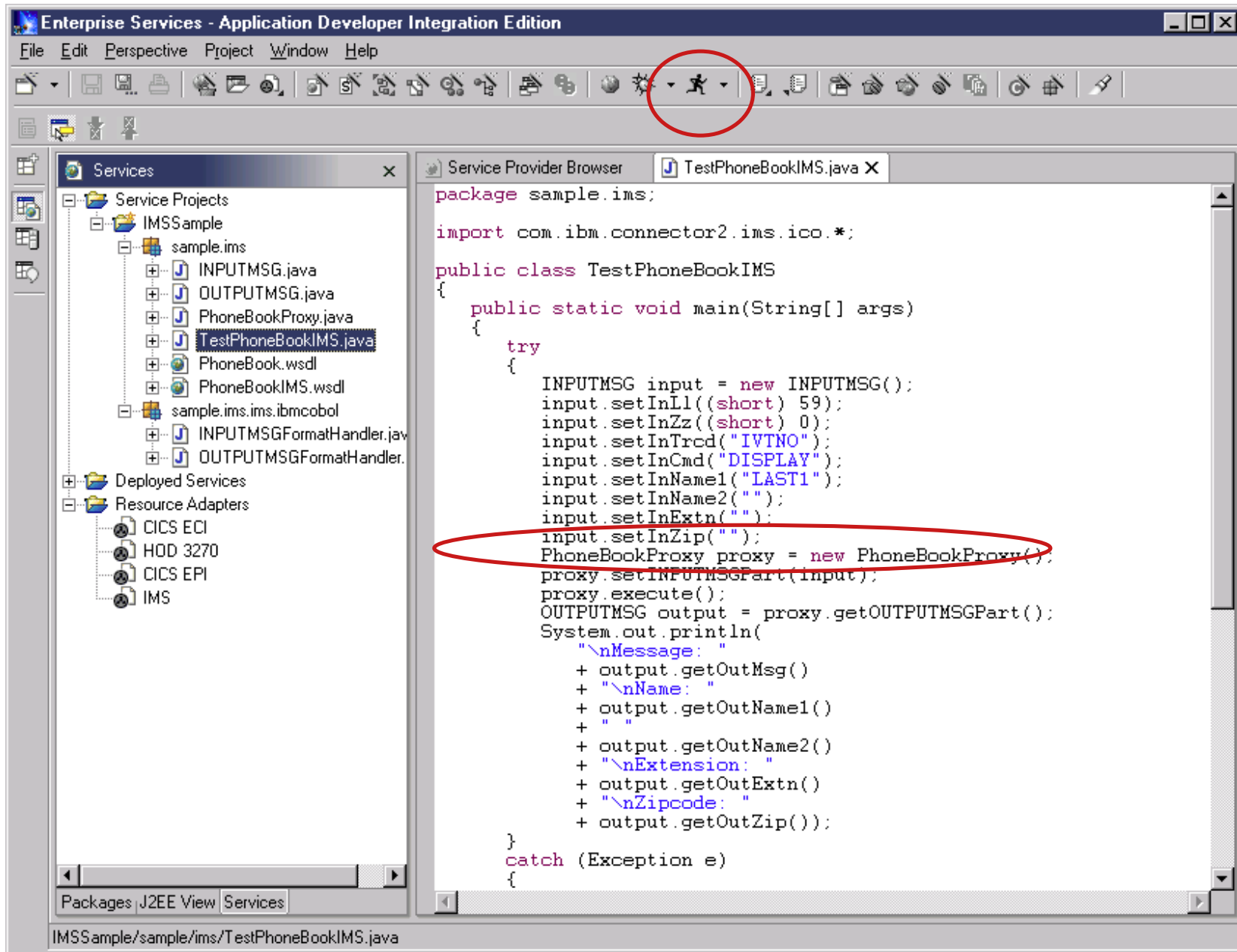


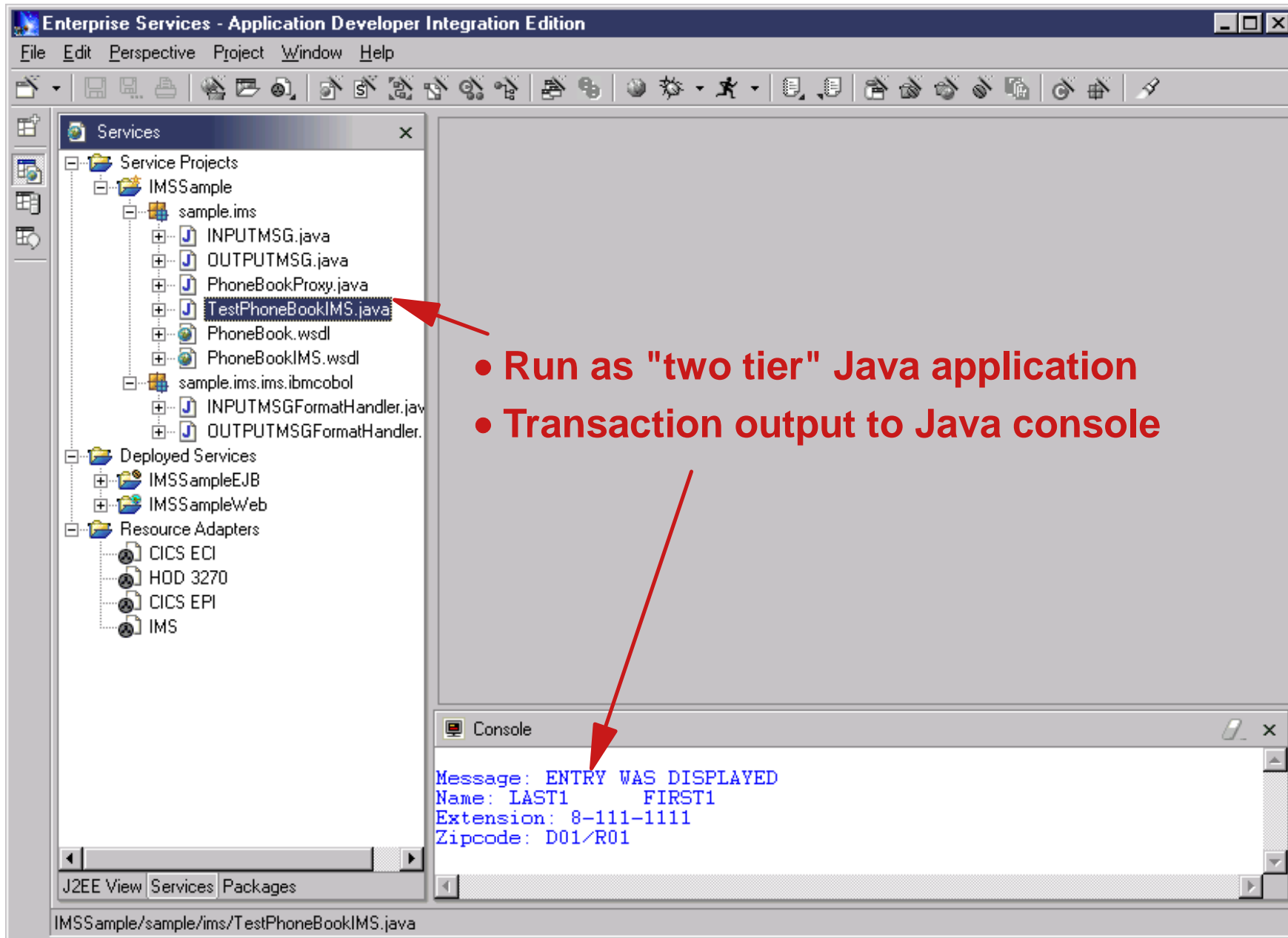












# How to find our updates

- IMS Connector for Java **development**
  - ▶ Latest versions included in WSAD IE 4.1
- IMS Connector for Java **runtime** (aka IMS Resource Adapter, aka WebSphere Adapter for IMS):
  - ▶ For distributed platforms:
    - 1.2.0/1.2.1 executables on CD with IMS Connect 1.2
      - Linux for z/OS executable downloadable from IMS Web site
    - Later versions downloadable from IMS Web site
      - [www.ibm.com/ims](http://www.ibm.com/ims)
  - ▶ For z/OS platform:
    - SMPE installable APARs

# Appendix: Current IMS Connector Support

Function	z/390 client	distributed client
Send Only	No	No
Send Receive	Yes	Yes
Resume TPIPE (Asynchronous output)	No	No
Commit Mode 0	No	No
Commit Mode 1	Yes	Yes
Sync Level NONE	Yes	Yes
Sync Level CONFIRM	Yes (CCF only)	Yes (CCF only)
Sync Level SYNC (2-phase commit)	Yes (JCA with Local Option only)	No
Non-conversational transactions	Yes	Yes
Conversational transactions	Yes	Yes
Access IMS Full Function DB	Yes	Yes
Access IMS Fast Path DB	Yes	Yes
Multisegment Input and Output Messages	Yes	Yes
Local Option (Program call)	Yes	N/A
TCP/IP	Yes	Yes
JCA Transaction support	Yes (Currently support global transaction with RRS, non-XA)	No
JCA Component-Managed Security	Yes	Yes
JCA Container-Managed Security	Yes	No
JCA CCI Interface	Yes	Yes
SSL	No	No
Execution Timeout	No	No
Cascaded Transaction Support	No	No

# Appendix: Future IMS Connector Support

Function	z/390 client	distributed client
Send Only	Yes	Yes
Send Receive	Yes	Yes
Resume TPIPE (Asynchronous output)	Yes	Yes
Commit Mode 0	Yes	Yes
Commit Mode 1	Yes	Yes
Sync Level NONE	Yes	Yes
Sync Level CONFIRM	Yes (CCF only)	Yes (CCF only)
Sync Level SYNC (2-phase commit)	Yes (JCA with Local Option only)	Yes
Non-conversational transactions	Yes	Yes
Conversational transactions	Yes	Yes
Access IMS Full Function DB	Yes	Yes
Access IMS Fast Path DB	Yes	Yes
Multisegment Input and Output Messages	Yes	Yes
Local Option (Program call)	Yes	N/A
TCP/IP	Yes	Yes
JCA Transaction support	Yes	Yes
JCA Component-Managed Security	Yes	Yes
JCA Container-Managed Security	Yes	Yes
JCA CCI Interface	Yes	Yes
SSL	Yes	Yes
Execution Timeout	Yes	Yes
Cascaded Transaction Support	Yes	Yes



# Related Web Sites



*e-business powered by IMS*

- **IMS, IMS Connect, IMS Connector for Java**
  - <http://www.ibm.com/ims>
- **WebSphere Application Server**
  - <http://www.ibm.com/software/webservers>
- **WebSphere Studio Application Developer, Integration Edition**
  - <http://www.ibm.com/software/ad/studioappdev/>