

**Information Management** software

## Delivering real-time access to information.

*IBM DB2 9 Warehouse extreme workload management capabilities*



### Business requirements for information on demand

are redefining the requirements for data warehousing environments. In the past, only select “power” users needed access to business intelligence solutions, making it relatively easy to allocate processing power and to meet user demands. Plus, companies often separated transactional data from data used for strategic initiatives, dividing the workload between two systems. Today, however, more users and applications need to run complex queries. And companies are realizing the benefits that a single, unified warehouse of information can provide. But many data warehouse solutions are unable to support the increasing number of users and applications or the mixed workloads associated with supporting transactional and strategic processes.

These factors put pressure on IT departments to meet a growing number of service-level agreements (SLAs) for internal and external customers. A single data warehouse needs to serve all of a company’s users and applications, and if requests aren’t handled properly, responsiveness to key decision makers or customers may suffer. And that’s bad for competitiveness and the bottom line.

Which is worse: delaying a month-end report by five minutes or keeping a valuable customer on hold while a customer service representative waits for a response from the data server? The report can wait—key customers can’t.

- **Supports operational and strategic processes simultaneously**
- **Delivers contextual insight to a broader set of users, improving decision making**
- **Allows you to consolidate multiple datamarts and warehouses to reduce costs**



## Providing both high performance and real-time insight

**One company that lacked workload management capabilities experienced such significant slowdowns in warehouse response times that its executives made the decision not to risk inserting the warehouse into operational processes. That decision protected the data warehouse from performance issues, but deprived the company of valuable, real-time information that could have made a significant positive impact on daily operations. With DB2 Warehouse, you won't have to decide between performance and real-time insight.**

The status quo for workload management will no longer cut it. You need an automated and reliable approach that can enable every user to leverage business intelligence for real-time operational processes as well as for strategic initiatives.

### **Delivering deeper business insight to all of your business users**

IBM DB2® Warehouse 9 software is designed to provide insight without boundaries—without compromising data warehouse performance. It features a set of extreme workload management capabilities that can support all of your business information in a single data warehouse environment—without compromising performance. DB2 Warehouse workload management capabilities help you prioritize data serving based on busi-

ness needs to produce more predictable results and to help make sure your business users and applications always get what they need, when they need it.

IBM DB2 Warehouse is a complete, multi-purpose environment that allows you to access, analyze and act on virtually any type of information—structured and unstructured, operational and transactional, real time and historical. It enables you to reach farther into all of your business data; look more deeply to find hidden relationships, patterns and trends; and act more quickly using reliable, timely insight to drive more sales, improve employee productivity, and strengthen and streamline relationships with customers, trading partners and suppliers while keeping risks in check.

### **Prioritizing workloads to support the needs of the business**

With traditional data server solutions, it's difficult to balance the need to deliver more users information in real time and the technological strain that more users running queries puts on the database. With the advanced workload management capabilities in DB2 Warehouse, however, you can rank database queries according to business priority, helping to ensure that SLAs for key departments, customers and users are met while supporting the needs of other users. For example, when two jobs are competing for the same resources, the job with the highest business priority will be executed promptly, while the job with the lower priority is postponed until resources are available—reducing the impact of competing demands on overall database performance.

### **Monitoring performance proactively to help you do more with less**

To help ensure your business needs are consistently met, DB2 Warehouse includes robust monitoring capabilities that enable you to proactively diagnose database issues and that help maintain optimum performance. These capabilities allow you to monitor your data server's capacity, determine what is going on in the system, identify potential problems and drill down into specific areas to find useful data for issue resolution.

DB2 Warehouse also enables you to monitor the database for certain conditions and trigger actions if thresholds you have put in place are exceeded. For example, you can configure the database to abort a job that is taking too long to complete—which could indicate a possible problem—and try the job again at a later time. Thresholds therefore enable you to proactively maintain database performance, so you are not forced to react only after performance has begun to degrade.

These features help enable the database to predict what priority it should assign to any given request—before processing the request and potentially having a negative impact on performance. So DB2 Warehouse can help you deliver in-context insight to a broader set of users without compromising performance.

### **Consolidating workloads to lower costs**

Suppose you need to consolidate your sales, marketing and financial reporting datamart environments into a single enterprise data warehouse to provide real-time updates from the warehouse to other key business applications. The workload management capabilities of DB2 Warehouse enable you to consolidate the workloads for these different business areas, while at the same time continuing to meet the SLAs for each group. Because DB2 Warehouse allows you to prioritize user and workload demands, you can share warehouse resources among a larger group of applications and users. The result is reduced costs, a more holistic view of operations and an increased ability to analyze company performance across divisions and activities.

### **Why IBM?**

IBM has the vision and the extensive industry experience to help you leverage the extreme workload management features built into DB2 Warehouse software. Committed to delivering a superior product along with quality services, IBM can help you significantly reduce the risks associated with transforming how your business captures, manages, uses and delivers information across all aspects of your operations. In addition, IBM has a vast network of IBM Business Partners that delivers the support you need, as well as solutions that are designed to easily integrate with IBM technology and help you get the most value from your investments.

### **For more information**

To find out more about how the extreme workload management features included in DB2 Warehouse can help you do more with your data, contact your local IBM representative or visit:

[ibm.com/bi](http://ibm.com/bi)



© Copyright IBM Corporation 2007

IBM Corporation  
Software Group  
Route 100  
Somers, NY 10589  
U.S.A.

Produced in the United States of America  
10-07  
All Rights Reserved

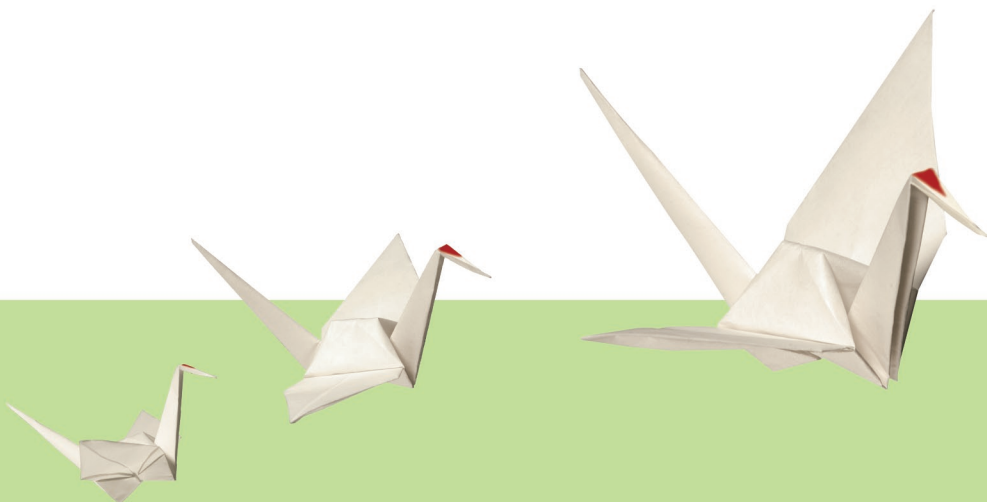
IBM, the IBM logo, [ibm.com](http://ibm.com) and DB2 are trademarks of International Business Machines Corporation in the United States, other countries or both.

Other company, product and service names may be trademarks or service marks of others.

References in this publication to IBM products or services do not imply that IBM intends to make them available in all countries in which IBM operates.

The information contained in this documentation is provided for informational purposes only. While efforts were made to verify the completeness and accuracy of the information contained in this documentation, it is provided "as is" without warranty of any kind, express or implied. In addition, this information is based on IBM's current product plans and strategy, which are subject to change by IBM without notice. IBM shall not be responsible for any damages arising out of the use of, or otherwise related to, this documentation or any other documentation. Nothing contained in this documentation is intended to, nor shall have the effect of, creating any warranties or representations from IBM (or its suppliers or licensors), or altering the terms and conditions of the applicable license agreement governing the use of IBM software.

The IBM home page on the Internet can be found at [ibm.com](http://ibm.com)®.



IMF14003-USEN-00