

IBM Maximo Data Center Infrastructure Management



Visualize, manage and optimize the physical infrastructure of your data center

Highlights

- Maintain an up-to-date visualization of data center floor plans, equipment and assets
 - Make placement decisions based on space and power capacity
 - View point-to-point connectivity of data center assets and equipment
 - Plan multiple scenarios to determine future configurations
 - Integrate with IBM Tivoli® Asset Management for IT for a complete life-cycle view of all data center assets
 - Optimize infrastructure investments and extend the life of your data centers
-

At one time, it may have been possible to keep track of a data center's assets and facilities operations with a spreadsheet, a diagramming application or even simply the accumulated knowledge of staff. But those days are long gone. Today's growing data centers, with their complex infrastructures of ever-changing technologies, crowded floors, and pressures to control energy use and costs, need sophisticated tools that can document the environment, place assets based on space and power capacity, and provide the insights necessary for effective change.

IBM Maximo® Data Center Infrastructure Management provides the visibility and control both data center and facilities professionals need in order to manage their IT and non-IT assets. It empowers organizations to extend enterprise-wide asset and facility management into the data center by optimizing the data center's infrastructure in the context of its entire physical environment—including management requirements for space, power, cabling and network connectivity. The result is a greater ability to control costs and mitigate risk during data center expansion and change.

Providing smart answers about the data center

The operations and capabilities known as data center infrastructure management (DCIM) constitute a newly emerging but rapidly expanding field that offers an intersection of asset, facilities and energy management. As the world's technology infrastructures have become more instrumented, interconnected and intelligent, the need to understand the environment has become more important than ever.



Answering the questions of “What do I have?” “Where is it?” “Where can I place it?” “Who owns it?” and “How does it connect?” is fundamental to enabling growth and change. Gaining not only accurate answers but also actionable information is an indispensable step in both planning and executing change, and these answers are key to supporting business operations in the present and the future.

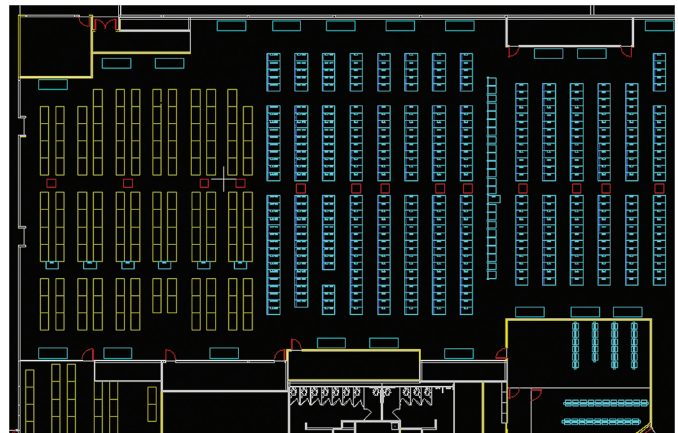
Bringing a new dimension to data center management

Moves, adds and changes (MACs) have always carried risk for the data center. If all goes well, the updated or expanded operation is better positioned to support the business. If problems occur, the data center can introduce errors and costly rollback of changes—or even cause downtime that can bring business to a halt.

For some time, data centers have used applications for managing the technology itself. But DCIM solutions now address additional dynamics of the data center—for example, the relationship between technology equipment and the use of space and energy—that are bringing IT and facilities operations together. Maximo Data Center Infrastructure Management can integrate new capabilities with existing IT management solutions to address the range of needs for data center visualization and understanding—to help managers achieve more effective planning and change, and optimize their data center infrastructure.

Supporting key functions in the data center

By providing views of the physical layer of the data center, Maximo Data Center Infrastructure Management gives facility and data center managers the visibility they need in order



A top-down view of the data center floor plan generated by Maximo Data Center Infrastructure Management can be an effective tool for planning and change.

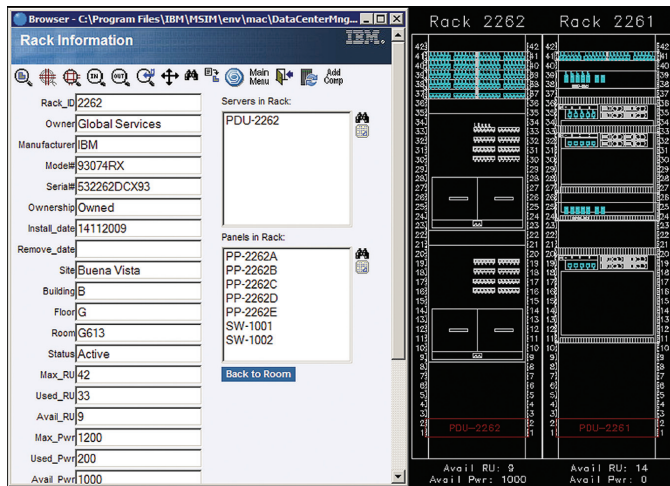
to address aspects of their operations that have been cumbersome and difficult. With DCIM capabilities, managers have the insights they need to support operations such as:

- **Growth and change:** Now managers can know how much rack space is available—and if they are potentially overloading racks. They can know whether enough power is available to support additions and changes to the data center. And they can coordinate processes for installing, moving or decommissioning equipment.
- **Maintenance:** Managers can better understand which equipment supports which departments or functions, avoiding lost time and added complexity during updates, changes and regular maintenance.

- **Optimization:** Greater insight enhances an organization's ability to get the most out of technology, extend the infrastructure's operational life and avoid the expense of building a new data center or expanding an existing one.
- **Mitigated risk:** IT and facility managers have the control they need to make correct space planning and placement decisions and avoid downtime—including outages caused by errors or less-than-optimal changes.
- **Common management view:** The increasingly important collaboration between IT and facility managers is easier to achieve because these groups have a common view of the data center and its infrastructure, enabling them to better coordinate data center work and improve communications.

Delivering powerful capabilities for better management

Maximo Data Center Infrastructure Management links the data center with enterprise-wide programs for facilities, space and asset management that affect a full range of business operations, from buildings to IT, telecommunications,



A rack elevation view enables managers to drill into the rack contents and view the associated attributes, including point-to-point connectivity.

transportation and production. Specifically, it addresses the limitations of space and power that can hamper critical business functions.

With Maximo Data Center Infrastructure Management, data center and facility managers have an enhanced ability to:

- **Visualize the data center floor plan, equipment and assets.** IT and facility managers can dynamically maintain an up-to-date visualization of data center space, including a floor plan and rack elevation view. And they have the ability to drill down for more details on a specific location or asset to see how much space is being used in a specific location or rack. Managers can view point-to-point connectivity of assets and equipment, including end-to-end cable visualization. They can navigate the data center space starting at either a rack or a jack. They can import AutoCAD drawings and export changes back to the application while maintaining the intelligence associated with the drawings. Moreover, they can view the line-of-business ownership and use of the data center infrastructure.
- **Enhance space planning and MAC.** Using Maximo Data Center Infrastructure Management, the data center or facility manager can gain information on space and power capacity as well as heat dissipation for servers and racks; get a real-time, graphical representation of rack availability by location, customer and utilization; obtain insights into how much data center space is available or already utilized; and understand power thresholds that may prevent changes. Using the knowledge of the environment gained from this information, managers can place new assets or relocate assets in the data center directly on the drawing.
- **Align assets to power capacity.** Data center and facility managers can clearly see how assets and equipment relate to power capacity in a specific location. They can track power consumption and utilization of racks. They can use this information to better plan for growth, avoid downtime that can occur when power demands exceed capacity, and reduce costs that result from excessive power use.

- **Build and use accurate reports.** Maximo Data Center Infrastructure Management enables managers to report on rack content, system interconnections, heat dissipation, power loads, line-of-business asset ownership and more.
- **Asset management integration.** Maximo Data Center Infrastructure Management integrates with IBM Tivoli Asset Management for IT, enabling organizations to share critical asset data between the two applications. Users can also leverage the Tivoli Asset Management for IT workflow engine from drawings in Maximo Data Center Infrastructure Management.

Why IBM?

IBM provides end-to-end asset and facilities management for both IT and non-IT assets in all enterprise facilities including the data center. From racks, servers, cabling and routers to space and energy availability, IBM Maximo Data Center Infrastructure Management delivers powerful capabilities for placing, visualizing and documenting assets to support planning, growth and change—with enhanced efficiency and reduced cost—in the data center.

IBM Maximo Data Center Infrastructure Management is a key solution in the IBM Tivoli portfolio of data center management solutions that provide industry-leading capabilities in energy, asset, network, storage, security and IT service management.

For more information

To learn more about IBM Maximo Data Center Infrastructure Management and IBM solutions for enterprise-wide asset, facilities and data center management, contact your IBM representative or IBM Business Partner. Visit ibm.com/tivoli/solutions/facilities-management or ibm.com/software/tivoli/products/maximo-asset-mgmt



© Copyright IBM Corporation 2010

IBM Corporation Software Group
Route 100
Somers, NY 10589
U.S.A.

Produced in the United States of America
September 2010
All Rights Reserved

IBM, the IBM logo, ibm.com, Maximo and Tivoli are trademarks or registered trademarks of International Business Machines Corporation in the United States, other countries, or both. If these and other IBM trademarked terms are marked on their first occurrence in this information with a trademark symbol (® or ™), these symbols indicate U.S. registered or common law trademarks owned by IBM at the time this information was published. Such trademarks may also be registered or common law trademarks in other countries. A current list of IBM trademarks is available on the Web at “Copyright and trademark information” at ibm.com/legal/copytrade.shtml

Other company, product and service names may be trademarks or service marks of others.

References in this publication to IBM products and services do not imply that IBM intends to make them available in all countries in which IBM operates.

No part of this document may be reproduced or transmitted in any form without written permission from IBM Corporation.

Product data has been reviewed for accuracy as of the date of initial publication. Product data is subject to change without notice. Any statements regarding IBM's future direction and intent are subject to change or withdrawal without notice, and represent goals and objectives only.

The information provided in this document is distributed “as is” without any warranty, either express or implied. IBM expressly disclaims any warranties of merchantability, fitness for a particular purpose or non-infringement. IBM products are warranted according to the terms and conditions of the agreements (e.g. IBM Customer Agreement, Statement of Limited Warranty, International Program License Agreement, etc.) under which they are provided.

The customer is responsible for ensuring compliance with legal requirements. It is the customer's sole responsibility to obtain advice of competent legal counsel as to the identification and interpretation of any relevant laws and regulatory requirements that may affect the customer's business and any actions the customer may need to take to comply with such laws. IBM does not provide legal advice or represent or warrant that its services or products will ensure that the customer is in compliance with any law or regulation



Please Recycle