



爱开发 重创新 更智慧

Innovate2011

IBM Rational 软件创新论坛

 **Software. Everywhere.**



主题演讲:

IBM Rational Jazz 现状与发展

Leigh Williamson

IBM 杰出工程师
Rational CTO团队
leighw@us.ibm.com



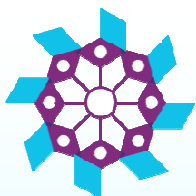
DISCLAIMER

IBM's statements regarding its plans, directions, and intent are subject to change or withdrawal without notice at IBM's sole discretion. Information regarding potential future products is intended to outline our general product direction and it should not be relied on in making a purchasing decision.

The information mentioned regarding potential future products is not a commitment, promise, or legal obligation to deliver any material, code or functionality. Information about potential future products may not be incorporated into any contract. The development, release, and timing of any future features or functionality described for our products remains at our sole discretion.

- Information is confidential and must not be shared or redistributed without permission from IBM
- Plans are based on best information available and may change in future

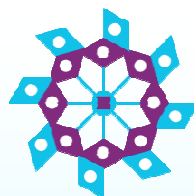
软件与系统工程的转型



集成

- 重用核心组件
- 测试驱动开发(TDD)
- 发布计划 / 燃尽图
- 可执行的集成发布
- 给干系人演示

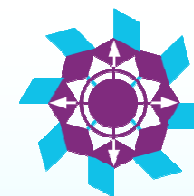
跨生命周期的集成



协作

- 团队透明化
“谁, 什么, 什么时候, 为什么”
- 自动化的、无错误的工作交接
- 更少的会议开销
- 真实信息的单一来源
- 根据实际需要进行流程定制

*协作实现
团队与文化的融合*



优化

- 实时的报表/提醒
- 动态的两层计划
- 工作量/技能的平衡
- 自动的编排组合
- 基于风险/回报进行投资决策

优化业务结果

Jazz是如何与这三个主题联系在一起?

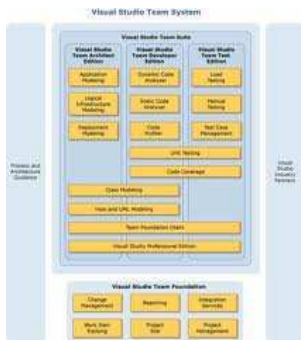
实现生命周期集成的老方法存在着明显的限制

∅ 有限的选择与覆盖

∅

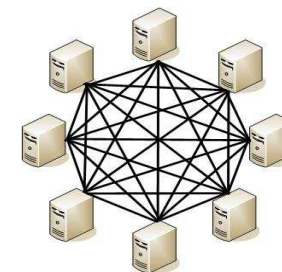
单一存储库

“我能期待一个供应商提供我需要的所有功能吗？另外，我现有的工具怎么办？”



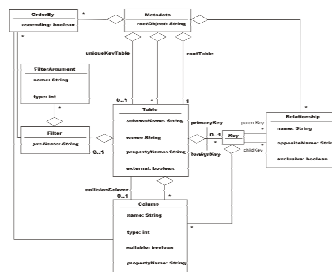
点对点的集成

“我怎么才能在不影响其它工具的前提下升级其中一个工具？”



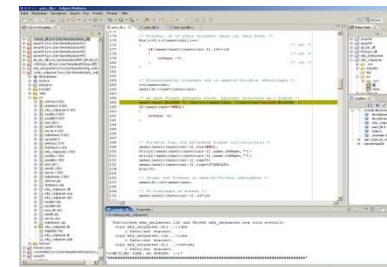
统一的元数据标准

“我怎么能够想像所有那些供应商都会同意？”



标准的实现

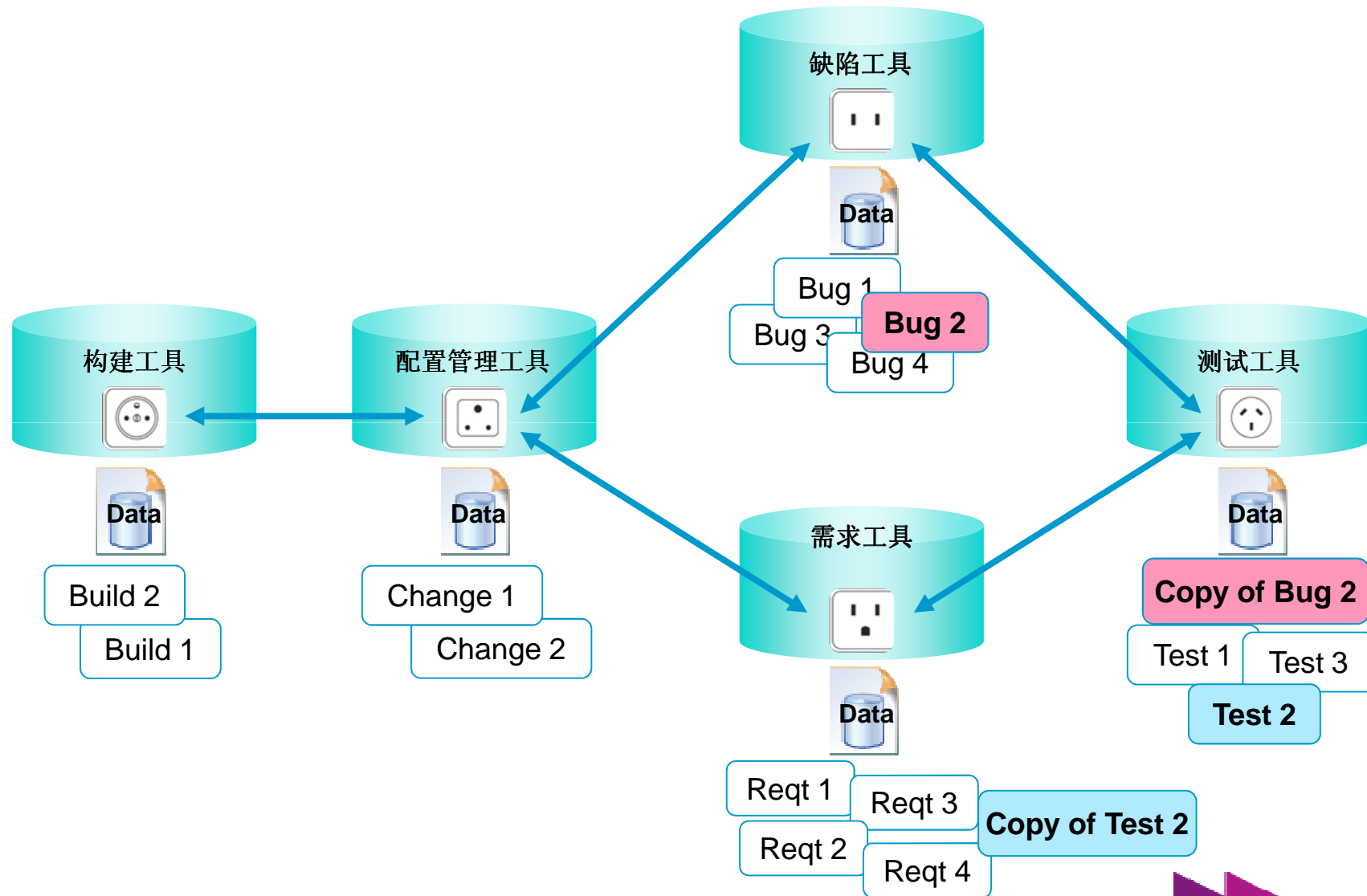
“难道我真的相信每一个供应商都会同一个框架下重写他们的工具吗？”



∅ 缓慢的呈现 & 难以一致地采纳

∅

今天的工具集成



但是集成远远不只是连线



- **工具与工具的集成：**集成用户界面，使得工具之间可以相互浏览是很重要的。这是问题的可视部分。

- **数据 & 流程的集成：**要最大化业务价值则需要全生命周期的链接与追踪，以及一致的管控、共享过程和协作式 workflow。

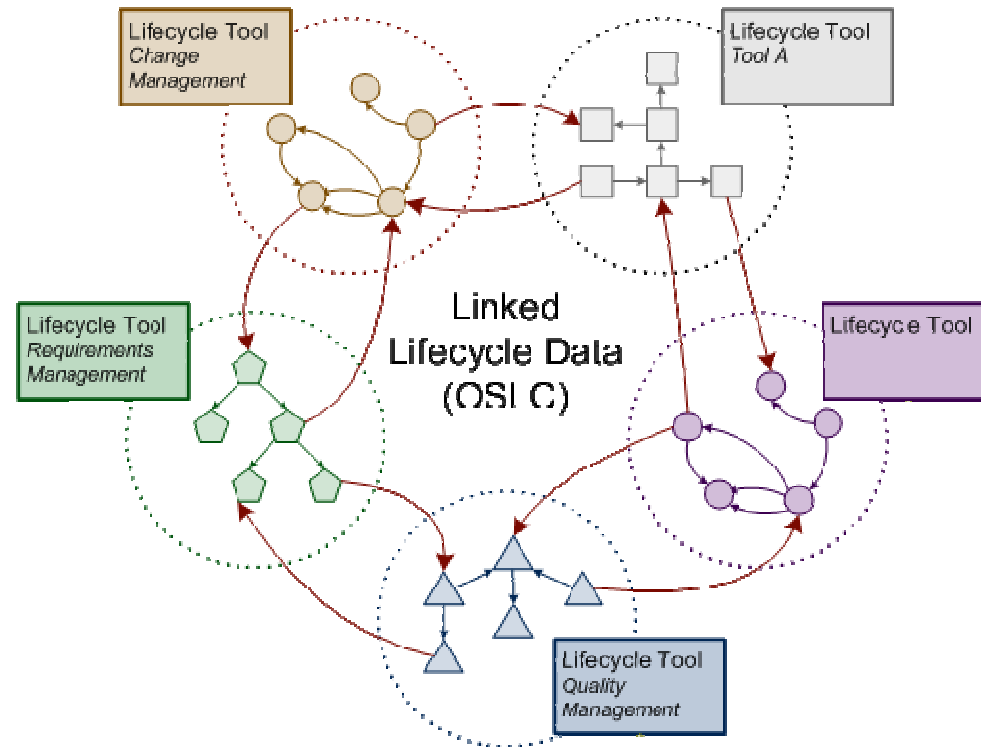
要最小化的运营成本则需要共享的基础设施，例如：跨所有资产的可搜索索引、公共报表和用户/项目/访问控制的统一管理。

工具间的集成是必要的，但不足够！

Jazz提供了跨软件与系统生命周期的开放式协作



Open Services for Lifecycle Collaboration (OSLC)



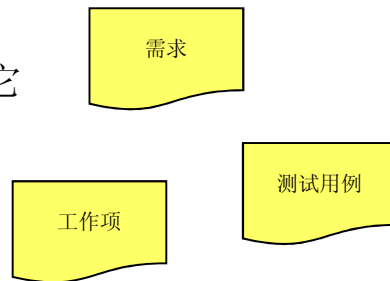
- OSLC让生命周期工具直接存取与链接分布在各处的资源，而不是采用传统的复制与同步的方法。

Jazz产品克服了以往的限制

✓ 开放的选择、丰富的集成

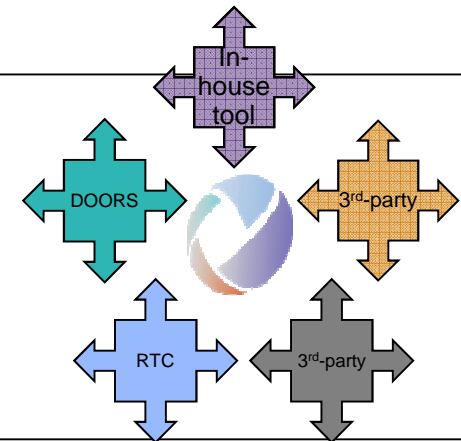
统一的资源标识符

“我能够把任何资源链接到其它资源，不管资源存储在何处!”



标准化的接口

“每一个工具都能够独立地进行演进，不会打破现有的集成!”



生命周期的开放标准

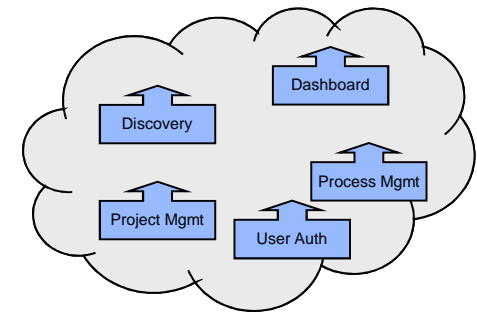
“生命周期的每一个领域都能够创建标准，无需等待其它领域的标准，或者等待整个行业同意!”



Open Services for Lifecycle Collaboration
open community. open interfaces. open possibilities

集成的服务

“需要跨越所有工具的服务以统一的格式和方法提供”



✓ 演进式、增量式的采纳

Jazz.net

让透明化和影响力进入到Jazz平台与产品的发展之中

Jazz.net 是IBM的官方网站，它为基于Jazz的Rational产品开发提供了一种透明化开发模式。

当所有开发活动都能够被所有人而不仅仅是项目团队成员看到并理解时，透明化开发就发生了。

Jazz.net是为了你以及所有对Jazz感兴趣的朋友而创建的社区！

IBM Rational Team Concert earns top rating

IBM Rational has the best current offering according to the Forrester Wave™: Agile Development Management Tools, Q2 2010 (May 2010). IBM, focusing on collaborative development, adds strong project management and analytics.

Jazz Team Blog

- Social Connector for Rational Team Concert: Community Preview
- We are at Innovate 2010
- Web 2.0 Presentation: Collaborative Application Lifecycle Management

New from Our Library

In the News

Testimonials

Innovate2010

Get it now! RTC Express-C FREE for up to 10 developers

Follow us on...

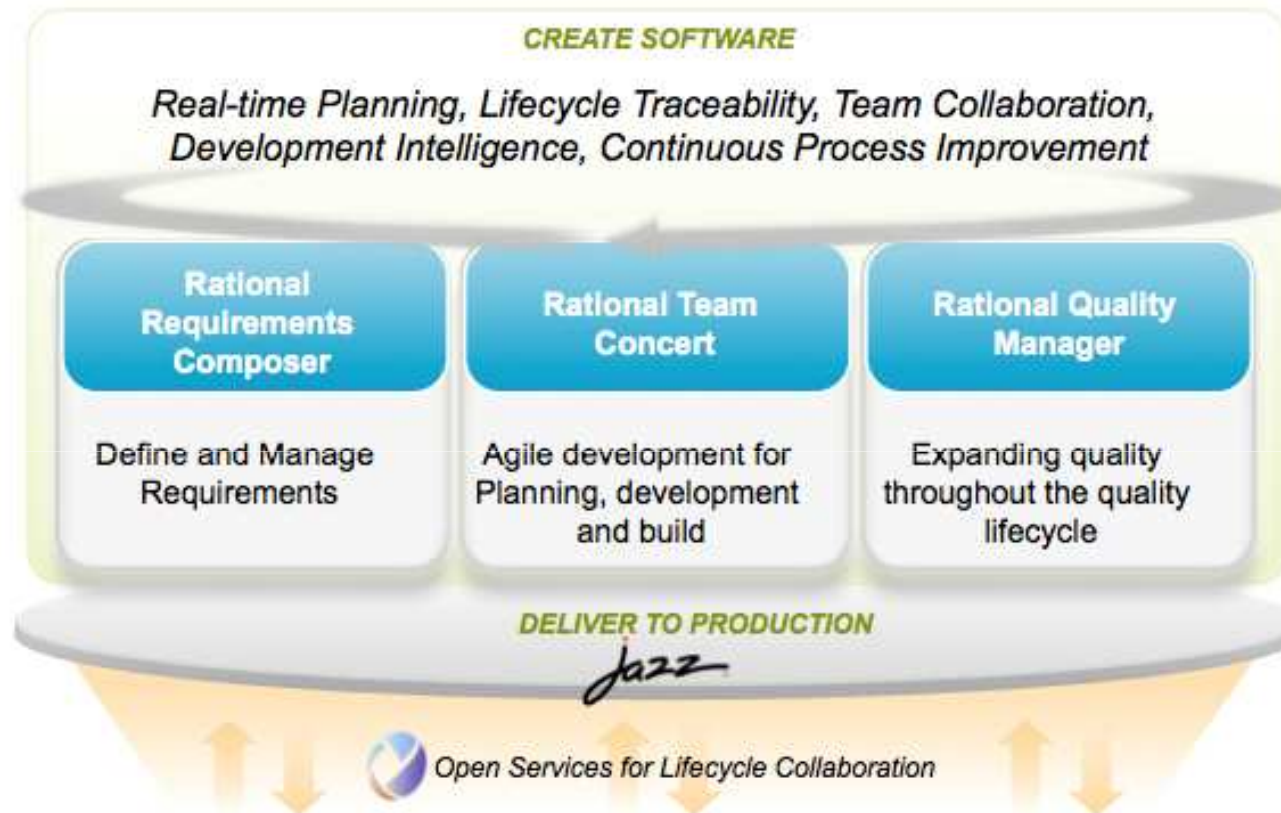
Twitter YouTube Facebook

迄今Jazz产品

- ✓ 实时地计划
- ✓ 端到端的追踪能力
- ✓ 持续过程改进
- ✓ 开发智能化
- ✓ 积极地协作



Jazz产品在行动



让我们一起来看看这些产品是如何利用Jazz平台一起工作的...

用户管理

Rational Jazz Team Server (dm.ibm.com:9443/jts)

Server Administration

Home Server **Users**

User Administration

- Active Users
- Archived Users
- Client Access License Management
- Acquired Floating Licenses

Active Users

Create User | Import Users

You can create user accounts and edit user account and licensing information in the Application User Administration pages, or in the Jazz Team Server User Administration pages. However, to edit Application-specific user settings, you will need to use the Application User Administration page. In all cases the common user information is synchronized across the Applications and the Server.

Use this page to create, import, and edit user accounts and assign client access licenses to users. To create a new account, click the "Create User" action above. To edit an account and assign licenses, click on a user name in the list below. To search for a particular user, enter a portion of the name, user ID, or email address in the filter-box below.

Previous | 1 - 17 of 17 | Next

Type Filter Text

Name	User ID	E-Mail	Actions
Al	al	al@jkebanking.net	
Bob	bob	bob@jkebanking.net	
Build	build	build@jkebanking.net	

集成模式	客户价值
用户的身份管理与授权	<ul style="list-style-type: none"> 只需一次增加用户，他们对共享Jazz Team Server的所有应用程序都可用 很容易进行用户管理 减少维护和管理成本

生命周期项目的成员

Lifecycle Project Members ? Add Member | Save

The members page provides an easy way to manage the members of a Lifecycle Project. From this page, you can add or remove members and manage the process roles assigned to a member in each artifact container.

Select Project:

50 Items Per Page | Previous | 1 - 12 of 12 | Next |

Name	User ID	CCM	QM	RM	Status	Actions
Al	al	✓	✓	✓	Ok	
Bob	bob	✓	✓	✓	Ok	
Build	build	✓			Ok	
Curtis	curtis			✓	Ok	
Deb	deb	✓		✓	Ok	
km	km	✓	✓	✓	Ok	
Marco	marco	✓	✓	✓	Ok	
Rebecca	rebecca	✓			Ok	

集成模式	客户价值
用户的身份管理与授权	<ul style="list-style-type: none"> 集中而且方便地管理每一人用户具有哪些应用程序的访问权限

优化的追踪视图

Change and Configuration Management (/ccm)

JKE Banking (Change Management)

Project Dashboards Work Items Plans Source Control Builds Reports Search Work Items

BRM Sprint 2 (1.0) Plan

28 items: 25 open, 3 closed | Ends in: 10 days

Plan Details Edit

Planned Items Links Snapshots Dashboard Notes

View As: Traceability (18 items filtered) Add Work Item

Actions	Summary	Implements Requirement	Tested By Test Case	Affected by Defect
	Donors Can Choose to Support Multiple Organizations	444: Donor Chooses Multiple Organizations	97: Allocate Dividends to Multiple Organizations	300: Failing Test Case "Donor Dividend Allocation Criteria"
	Donor Dividend Allocation Criteria	Donor Dividend Allocation Criteria	-	-
	Requests sent in form of email	-	-	-
	Frequency of dividend transfer	Frequency of dividend transfer	Verify dividend transfer frequency	301: Failing Test Case "Frequency of dividend transfer"
	Organization must identify how much money is deposited	Organization must identify how much money is deposited	Organization must identify how much money is deposited	-
	Organizations may apply with an initial request	Organizations may apply with an initial request	Organizations may apply with an initial request	-

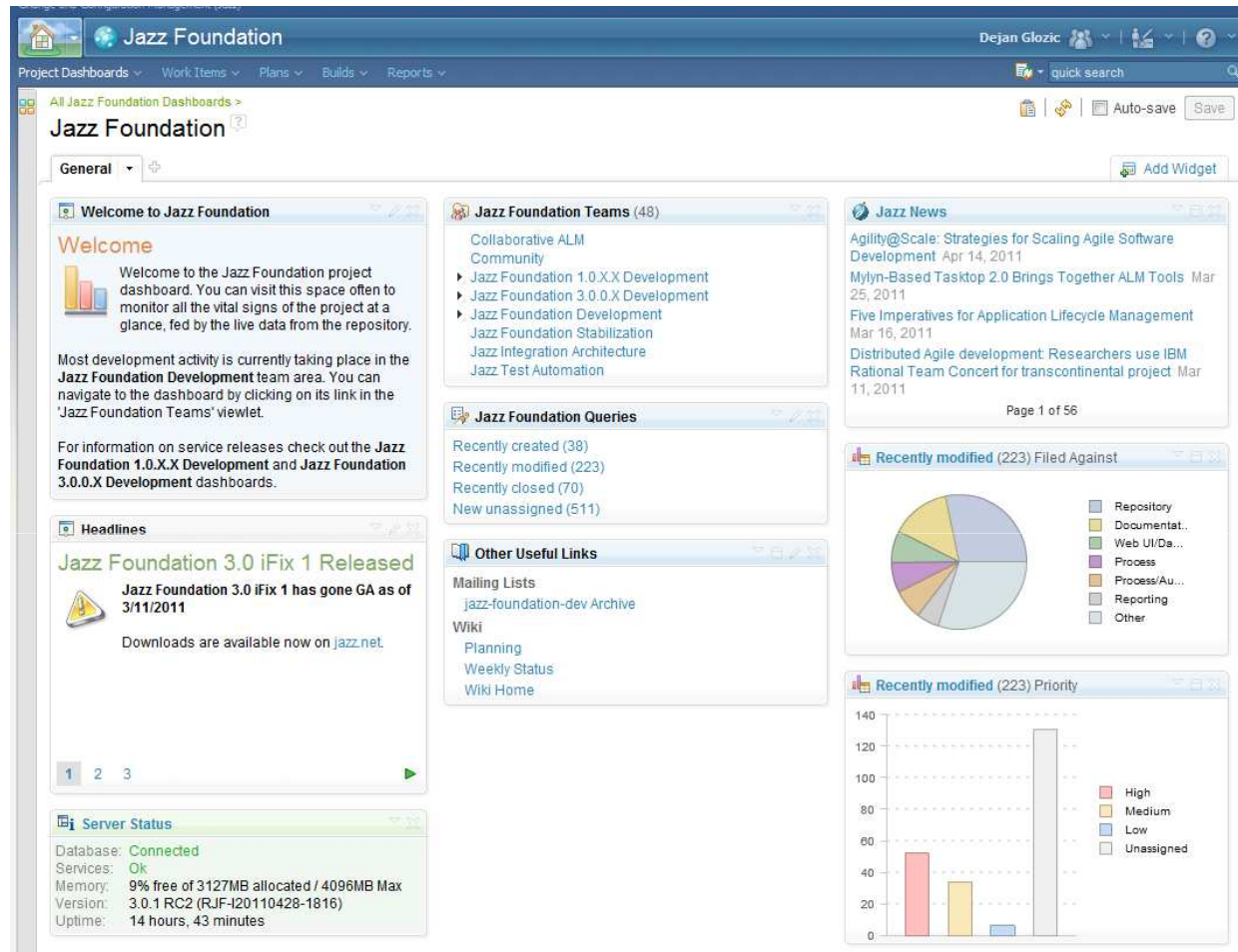
集成模式

客户价值

整个生命周期数据的索引、查询与搜索

创建追踪视图，能够提供跨产品的可视能力和关联关系摘要

项目仪表盘



集成模式

客户价值

项目仪表盘

- 整合来自多个工具的基本信息，提供项目整体视图

个人仪表盘（经用户自己定制后）

Quality Management (/qm)

JKE Banking (Quality Management) One of the Client Access Licenses expires in 34 days | cp

Requirements Planning Construction Lab Management Builds Execution Reports Defects Search QM Resources

Dashboards

All JKE Banking (Quality Management) Dashboards >

cp's Dashboard

General Lifecycle Test Case State Requirements Tracing Development Defects

Requirements

Information about requirements coverage

Requirement C... in All Projects (100)

- Donor Chooses Multiple Organizations (117) 2 days ago
- Release 1 Planning (14) 3 days ago
- The car must stop at the red light (116) 3 days ago
- Allocate dividends by Percentage (90) 4 days ago

Development

Alignment with Development

Plan Items with no Require... (1)

- 70: Support Dividend Processing via Mobile Devices

Plan Items implementing... (17)

- 83: Donor Chooses Multiple Organizations

Testing

Test Information

Plan Items with no Test Case (4)

- 83: Donor Chooses Multiple Organizations
- 78: The car must stop at the redlight
- 74: Support Corporate Interface Guidelines
- Processing via Mobile

Mashup 生命周期查询

集成模式	客户价值
个人仪表盘	<ul style="list-style-type: none"> 提供个性化的视图，展示与当前用户的角色与职责相关的项目信息

支持OpenSocial gadgets与IBM IWidgets

- 除了支持Jazz viewlets之处，还支持OpenSocial gadget 规范1.0
- 增加一个合法的OpenSocial gadget 只需通过复制与粘贴它的定义URL到widget目录
- 通过Lotus Mashup Enabler来支持IBM IWidgets
- 工作项OpenSocial gadget在jazz.net可以访问, 将来提供更多



集成模式	客户价值
仪表盘 & widget目录	<ul style="list-style-type: none"> 开放性允许重用以前开发的gadgets & widgets

你只需停留在自己的UI上，其它工具的UI会过来

- 一种公共的‘指派’方法，用来在各个工具之间创建工作件，并建立相互链接关系

RQM的测试用例

与RTC进行交互的对话框

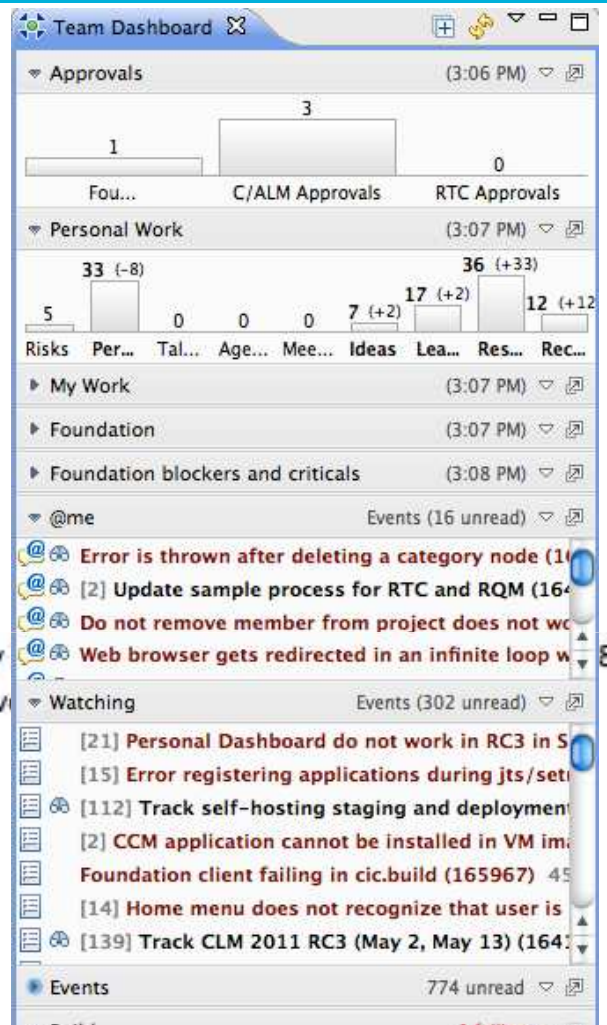
测试用例与计划项建立双向链接

点击->增加计划项链接

集成模式	客户价值
导航资源，并且管理他们之间的链接关系	<ul style="list-style-type: none"> 让工具之间的数据共享变得可能 构成一张Web数据网，让其它集成模式也可以使用

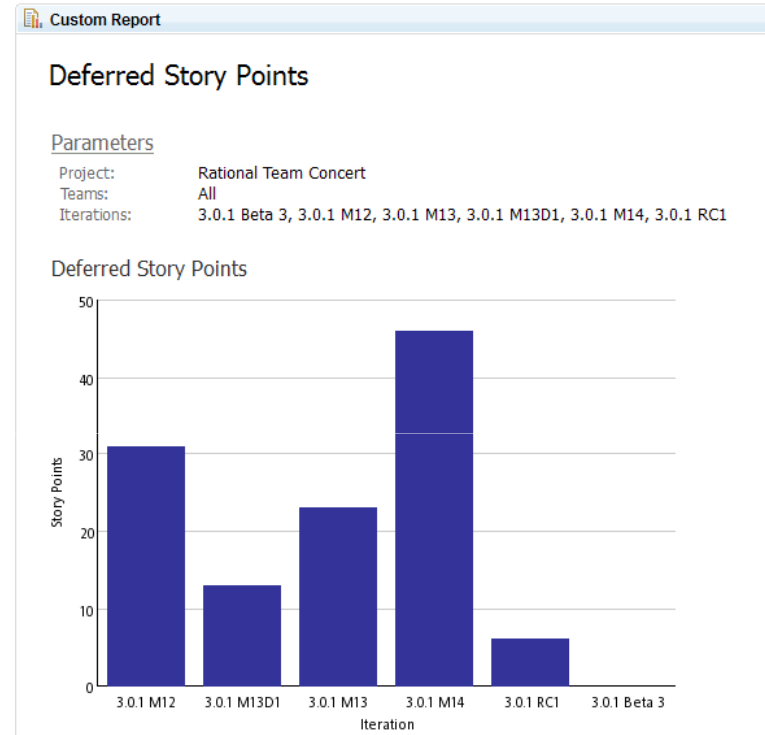
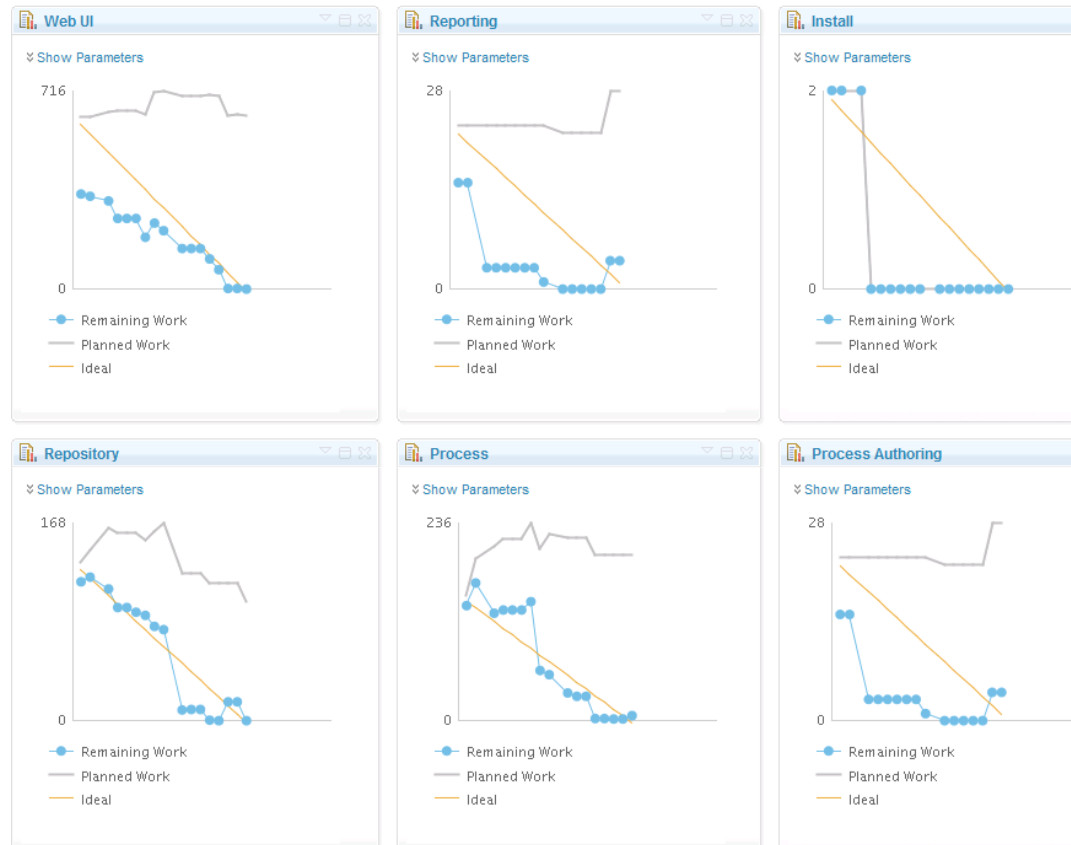
订阅服务

- Query Feed: Builds - Foundation (9)
- Query Feed: CPA (open) (156)
- Query Feed: QCert JazzF v3.0 Current Release (Dev+Test): Recently
- Query Feed: QCert JazzF v3.0 Current Release (Dev+Test): Unresolved
- Query Feed: Subscribed C/ALM (18)
- Query Feed: Subscribed Foundation (111)
- Query Feed: Subscribed RQM (2)
- Query Feed: Subscribed RRC (5)
- Query Feed: Subscribed RTC (46)



集成模式	客户价值
把查询变成feeds，然后订阅它们	<ul style="list-style-type: none"> ▪ Feeds能够通知你什么时候项目数据发生了变化了 ▪ 让你更加有效地对环境变化做出调整

公共报表



集成模式	客户价值
数据仓库	<ul style="list-style-type: none"> 查看项目中数据的变化趋势

小结 – 集成模式

- 用户身份管理与授权
- 许可证与检查
- 生命周期项目 & 项目模板管理
- 生命周期数据索引、查询与搜索
- 项目仪表盘
- 个人仪表盘
- 仪表盘 & widget 目录
- 浏览资源并且管理它们之间的链接
- 把查询变成feeds并且订阅它们
- 数据仓库

云计算带来变革

IT演进

- 改变着IT经济
 - 减少运营成本
 - 基础设施、软件、技能
- 自动化服务交付
- 部署新的能力

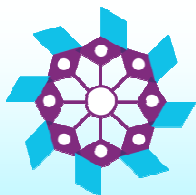
支撑业务转型

- 支持新层次的协作
 - 全球化访问
- 加速创建与部署新的服务
- 使新的业务模型成为可能

云计算正在越来越深地影响的业务，驱动着过程转型，并让许多新的服务成为可能。

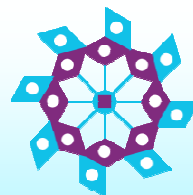
小结

- Rational的使命是在以下3条主线帮助客户实现他们的软件与系统交付过程转型:



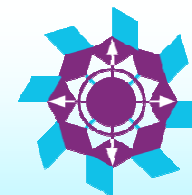
集成

跨生命周期的集成



协作

*协作实现
团队与文化的融合*



优化

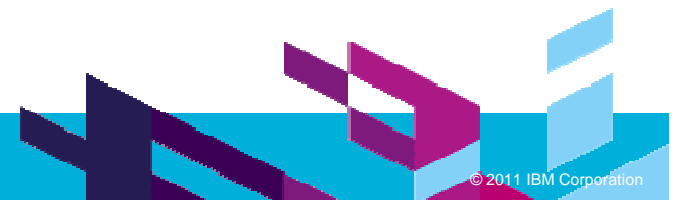
优化业务结果

- Jazz提供了一个不同的、更好的方法来集成软件与系统的生命周期
- 更好的集成使得更有效率的协作，实现团队与文化的融合
- 更有效的团队将产生出更好的业务结果

QUESTIONS



www.ibm/software/rational





www.ibm/software/rational

© Copyright IBM Corporation 2011. All rights reserved. The information contained in these materials is provided for informational purposes only, and is provided AS IS without warranty of any kind, express or implied. IBM shall not be responsible for any damages arising out of the use of, or otherwise related to, these materials. Nothing contained in these materials is intended to, nor shall have the effect of, creating any warranties or representations from IBM or its suppliers or licensors, or altering the terms and conditions of the applicable license agreement governing the use of IBM software. References in these materials to IBM products, programs, or services do not imply that they will be available in all countries in which IBM operates. Product release dates and/or capabilities referenced in these materials may change at any time at IBM's sole discretion based on market opportunities or other factors, and are not intended to be a commitment to future product or feature availability in any way. IBM, the IBM logo, Rational, the Rational logo, Telelogic, the Telelogic logo, and other IBM products and services are trademarks of the International Business Machines Corporation, in the United States, other countries or both. Other company, product, or service names may be trademarks or service marks of others.