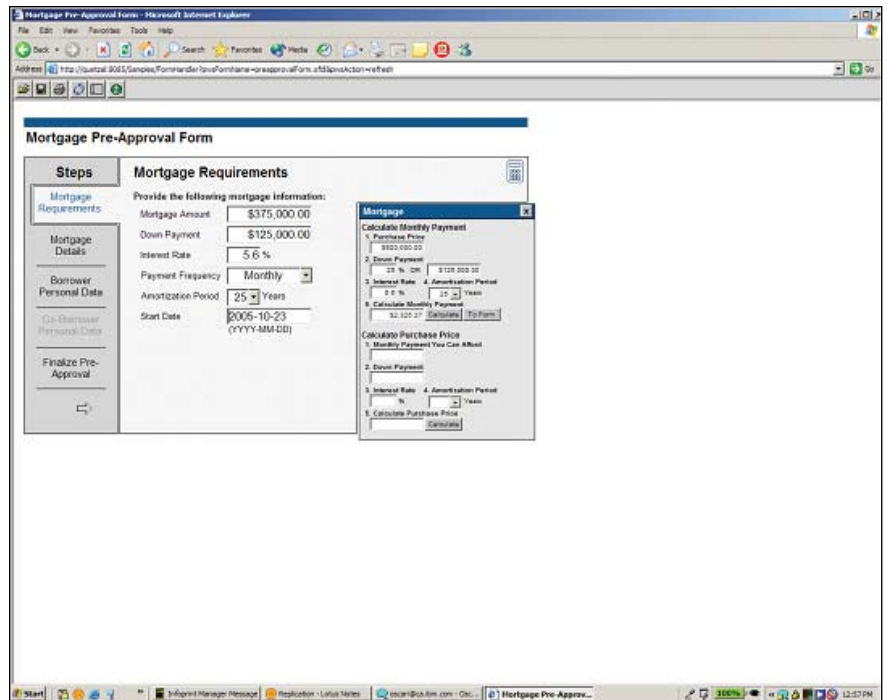


## IBM Workplace Forms Server

### Highlights

- **Enables a forms front end to SOA-based composite applications**
- **Optimized server performance for straight-through data integration to multiple back-end systems**
- **Flexible forms deployment options—rich client, zero-footprint, forms-enhanced browser or hybrid**
- **Seamless support of online and offline forms usage**
- **Extensible forms logic server and client-side architecture**
- **Integrated, low administration, zero-footprint option enables XML back-end integration with the ubiquity of an HTML forms front end**
- **Simplifies prepopulation of form templates, server-side modification of forms or form-based business logic**
- **Enables extraction of form data instances and validation of signatures from within e-form applications**



### E-forms address challenges faced by organizations

In today's competitive market, public and private sector organizations in all industries have a need for security-rich forms that leverage existing sources and systems to help better serve

customers and increase operational efficiency. Comprehensive end-to-end systems are required that enable the efficient automation, capture and management of information throughout an organization.

In order to improve efficiencies, meet customer needs and maintain competitiveness, organizations need the ability to quickly develop, integrate and deploy forms-based applications. Organizations can automate industry-specific business processes with IBM Workplace Forms™ and IBM middleware products to display, store, retrieve, integrate and control access to the forms-based information.

**IBM Workplace Forms Server enables rapid deployment of XML forms**

As part of the IBM Workplace Forms product offering, IBM Workplace Forms Server enables the delivery and integration of XML forms applications. It provides a common, open interface to enable integration of e-forms data with server-side applications. IBM Workplace Forms is an ideal front end to back-end systems or composite applications that require support for multiple XML schemas in a single form. IBM Workplace Forms Server delivers a true zero-footprint solution, providing e-forms to external users quickly and efficiently within a browser, without requiring additional downloads or plug-ins. IBM

Workplace Forms Server also provides a mechanism to automatically distribute client-side software such as IBM Workplace Forms Viewer.

**Key features**

*Extends forms applications outside the enterprise*

With an integrated zero-footprint solution, IBM Workplace Forms Server allows users to quickly and efficiently access, complete and submit forms when using standard Web browsers—without requiring additional downloads or plug-ins. The zero-footprint solution can also be deployed as part of a hybrid solution with forms that support business processes requiring rich client functionality to support sophisticated digital signatures, offline use or compliance requirements.

*Automates software deployment*

IBM Workplace Forms Server enables Workplace Forms Viewer and other related software to be automatically deployed to end users through standard Web browsers. The automation of the deployment process helps save time, significantly reduce the need for user interaction and ensure the correct installation of component upgrades for each user.

*Enables creation of rich applications*

With support for client and server side Java™ extensions and embedded Java support, IBM Workplace Forms Server enables the creation of rich form-based applications with custom extensions that can introduce new functionality and leverage existing business logic.

*Enhances security with digital signature support*

IBM Workplace Forms Server provides a low administration solution for sophisticated data capture requirements, while supporting form attachments, pixel precise viewing and printing, and automated validation of forms-based information with a variety of signing technologies—including standards-based digital certificates, signature pads, tablets and other forms of biometric signatures.

*Helps improve developer productivity*

IBM Workplace Forms Server simplifies the creation and delivery of forms applications. It provides a common, open interface to IBM Workplace Forms that enables integration of forms and forms-based information with existing middleware and applications.

## **About IBM Workplace Forms**

IBM Workplace Forms provides a security-rich, dynamic and intelligent front end to On Demand Business processes. The IBM Workplace Forms product family consists of IBM Workplace Forms Server, IBM Workplace Forms Designer and IBM Workplace Forms Viewer, that enable the creation, deployment and streamlining of XML forms-based processes. By leveraging open standards to integrate an intelligent user interface with high value back-end systems, IBM Workplace Forms provides public and private sector organizations with security-rich forms that leverage existing sources and systems to better serve customers and increase operational efficiency.

By automating the accurate capture and processing of information, IBM Workplace Forms helps reduce manual intervention, speed up transactions and increase operational efficiency. Workplace Forms enables organizations to achieve a "once and done" process by reducing or eliminating costly exception handling and enabling straight-through processing of transactions using open standards for data integration.

Built on open-standards-based component architecture, IBM Workplace Forms provides the forms front end to service-oriented architecture (SOA)-based component applications. In addition, Workplace Forms enables integration and deployment with IBM middleware and other standards-based products by supporting JSR-168, JSR-170, Java 2 Platform, Enterprise Edition (J2EE), as well as Web services.

## **How IBM Workplace Forms integrates with IBM products**

IBM Workplace Forms adds value to the IBM® Workplace™ family of products, while providing the opportunity to extend e-forms across IBM's broader portfolio of software solutions for On Demand Business through tight alignment with IBM Workplace, IBM WebSphere® and IBM DB2® offerings. IBM Workplace Forms provides a security-rich, dynamic front end to business processes, enabling process automation that leverages the major components of a complete On Demand Operating Environment including portals, content management repositories, workflow, records management and Java application servers.

IBM Workplace Forms adds value to IBM Workplace, WebSphere, IBM WebSphere Portal, IBM Lotus® Notes® and Lotus Domino®, and IBM DB2 Content Management software by automating forms-based processes through new capabilities such as offline processing, digital signing of multipart forms, attachment handling and inclusion of easy-to-use, wizard-based forms. IBM Workplace Forms revolutionizes IBM's support for open standards, forms-based processing using XML. In addition, IBM Workplace Forms complements industry solutions by offering industry-aligned, forms-based solutions to address business problems faced by a variety of industries including government, insurance, banking, healthcare and manufacturing.

## **For more information**

To learn more about IBM Workplace Forms visit:

**[ibm.com/software/workplace/forms](http://ibm.com/software/workplace/forms)**



© Copyright IBM Corporation 2005

IBM Software Group  
One Rogers Street  
Cambridge, MA 02142  
U.S.A.

Produced in the United States of America  
10-05  
All rights reserved.

DB2, Domino, IBM the IBM logo, Lotus, Lotus Notes, Notes, the On Demand Business logo, WebSphere, Workplace and Workplace Forms are registered trademarks of IBM Corporation in the United States, other countries or both.

Java and all Java-based trademarks are trademarks of Sun Microsystems, Inc. in the United States, other countries or both.

Linux is a trademark of Linus Torvalds in the United States, other countries or both.

Other company product and service names may be trademarks or services marks of others.

The information contained in this documentation is provided for informational purposes only. While efforts were made to verify the completeness and accuracy of the information contained in this documentation, it is provided "as is" without warranty of any kind, express or implied. In addition, this information is based on IBM's current product plans and strategy, which are subject to change by IBM without notice. IBM shall not be responsible for any damages arising out of the use of, or otherwise related to, this documentation or any other documentation. Nothing contained in this documentation is intended to, nor shall have the effect of, creating any warranties or representations from IBM (or its suppliers or licensors), or altering the terms and conditions of the applicable license agreement governing the use of IBM software.