

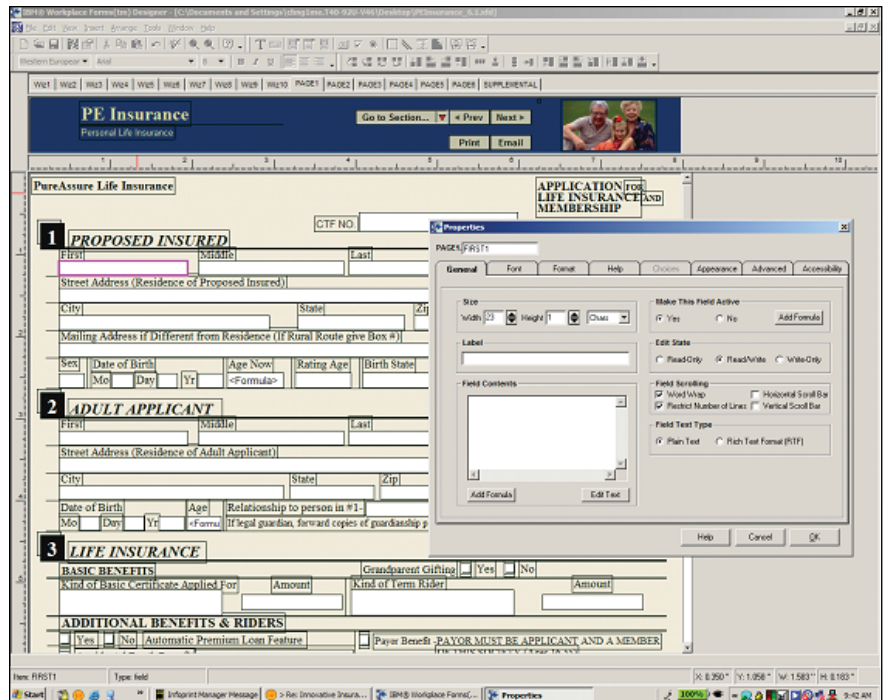
Enables fast creation of advanced forms to help streamline business process automation



IBM Workplace Forms Designer

Highlights

- **Easy-to-use form design tool enables rapid development of sophisticated form applications to streamline business processes**
- **Powerful GUI interface enables efficient creation of complex form business logic and multiple, overlapping signatures to facilitate role-based workflows**
- **Enables development of wizard-based forms to streamline form completion and help increase efficiencies, minimize errors, reduce costs and improve usability**
- **Addresses compliance requirements, providing auditable, pixel precise forms that ensure an accurate, security-rich record of a transaction**
- **Rapid creation of XML e-forms leverages existing paper forms, business rules, Web services interfaces and XML data schemas**



E-forms address challenges faced by organizations

Documents and forms are key elements of business operations today—the information that drives essential business processes and procedures is captured, presented and stored in forms. Forms-based

information spans the entire spectrum of business activity from customer communication to supplier interaction. Organizations require flexible systems that enable efficient access to and management of forms-based information across the organization.

To meet these requirements, organizations need forms-based business processes that address security and compliance issues, while decreasing the implementation time and cost of ownership required for forms creation, management and integration. To ensure interoperability and easy integration with existing systems, organizations are looking for forms automation solutions based on open standards, including XML and Web services.

IBM Workplace Forms Designer expedites the form creation process

IBM Workplace Forms™ Designer is an easy-to-use, what-you-see-is-what-you-get (WYSIWYG), e-form design environment that supports the drag-and-drop creation of pixel precise forms with an open and accessible, XML-schema-derived data model. IBM Workplace Forms Designer leverages open standards to deliver advanced, forms-based business process automation solutions that integrate seamlessly across lines of business applications and IT infrastructure.

Key features

Create rich form applications

IBM Workplace Forms Designer streamlines the form design experience and enables users to easily create custom extensions, including client Java™ extensions or embedded Java support, or leverage existing business logic to efficiently create forms. Form designers can adapt Workplace Forms to meet specific business requirements by enabling client and server-side validation and enforcement of unique business rules, thus eliminating most rework and providing security-rich transaction records and dynamic routing capabilities.

Enables fast form design

Reusable form components can be created to expedite the form design process and increase efficiency and consistency across form applications. IBM Workplace Forms Designer streamlines the form creation process by enabling forms to be designed once and displayed by a variety of Web and rich clients. Design time support for embedding Web services description language (WSDL) further expedites the form design process by leveraging existing functionality provided by Web services.

Create forms with precision and ease

Form designers do not require complicated programming skills to create powerful forms quickly and efficiently. Run-time preview option makes it easy to test form designs prior to implementation to ensure precision, accuracy and efficiency.

About IBM Workplace Forms

IBM Workplace Forms provides a security-rich, dynamic and intelligent front end to On Demand Business processes. The IBM Workplace Forms product family consists of IBM Workplace Forms Server, IBM Workplace Forms Designer and IBM Workplace Forms Viewer, that enable the creation, deployment and streamlining of XML forms-based processes. By leveraging open standards to integrate an intelligent user interface with high value back-end systems, IBM Workplace Forms provides public and private sector organizations with compliant, security-rich forms that leverage existing sources and systems to better serve customers and increase operational efficiency.

By automating the accurate capture and processing of information, IBM Workplace Forms reduces manual intervention, speeds up transactions and increases operational efficiency. Workplace Forms enables organizations to achieve a “once and done” process by eliminating costly exception handling and enabling straight-through processing of transactions, using open standards for data integration.

Built on open-standards-based component architecture, IBM Workplace Forms provides the forms front end to service-oriented architecture (SOA)-based component applications. In addition, Workplace Forms enables integration and deployment with IBM middleware and other standards-based products, by supporting JSR-168, JSR-170, Java 2 Platform, Enterprise Edition (J2EE), as well as Web services.

How IBM Workplace Forms integrates with IBM products

IBM Workplace Forms adds value to the IBM® Workplace™ family of products, while providing the opportunity to extend e-forms across IBM's broader portfolio of software solutions for On Demand Business through tight alignment with IBM Workplace, IBM WebSphere® and IBM DB2® offerings. IBM Workplace Forms provides a security-rich, dynamic front end to business processes, enabling process automation that leverages the major components of a complete On Demand Operating Environment, including portals, content management repositories, workflow, records management and Java application servers.

IBM Workplace Forms adds value to IBM Workplace, WebSphere, IBM WebSphere Portal, IBM Lotus® Notes® and Lotus Domino®, and IBM DB2 Content Management software by automating forms-based processes through new capabilities such as

offline processing, digital signing of multipart forms, attachment handling and inclusion of easy-to-use, wizard-based forms. IBM Workplace Forms revolutionizes IBM's support for open-standards, forms-based processing using XML. In addition, IBM Workplace Forms complements industry solutions by offering industry aligned, forms-based solutions to address business problems faced by a variety of industries including government, insurance, banking, healthcare and manufacturing.

For more information

To learn more about IBM Workplace Forms, visit:

ibm.com/software/workplace/forms



© Copyright IBM Corporation 2005

IBM Software Group
One Rogers Street
Cambridge, MA 02142
U.S.A.

Produced in the United States of America
10-05
All Rights Reserved

DB2, Domino, IBM, the IBM logo, Lotus, Lotus Notes, Notes, the On Demand Business logo, WebSphere, Workplace and Workplace Forms are registered trademarks of International Business Machines Corporation in the United States, other countries or both.

Java and all Java-based trademarks are trademarks of Sun Microsystems, Inc. in the United States, other countries or both.

Other company product and service names may be trademarks or services marks of others.

The information contained in this documentation is provided for informational purposes only. While efforts were made to verify the completeness and accuracy of the information contained in this documentation, it is provided "as is" without warranty of any kind, express or implied. In addition, this information is based on IBM's current product plans and strategy, which are subject to change by IBM without notice. IBM shall not be responsible for any damages arising out of the use of, or otherwise related to, this documentation or any other documentation. Nothing contained in this documentation is intended to, nor shall have the effect of, creating any warranties or representations from IBM (or its suppliers or licensors), or altering the terms and conditions of the applicable license agreement governing the use of IBM software.