



IBM QMF family

Highlights

Offers easy-to-use enterprise query and reporting tools

Provides access to IBM DB2® data anywhere

Scales with your database to accommodate business growth

Enables you to deploy e-business applications rapidly

Integrates with other desktop applications and the Web

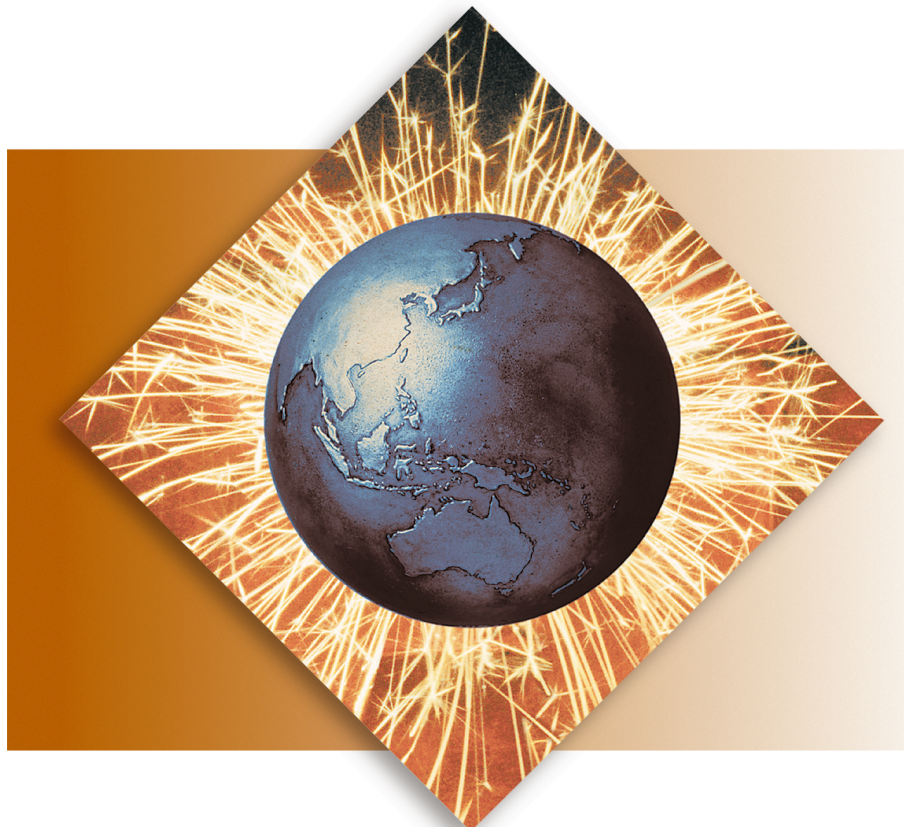
How do you query your data in an e-business environment?

Query is a key component of e-business, and IBM Query Management Facility (QMF™) is trusted throughout the world for access to mission-critical data. Today, QMF lets you extend that critical data access to a bigger, more connected world.

The QMF family of integrated tools provides support for every DB2 database, delivering robust query and reporting, table updating, data integration and rapid application development to multiple end-user environments. Extensive centralized control lets you confidently connect both novice and expert users within a private corporate network or over the Internet while you protect your critical data assets. And, with IBM DB2 DataJoiner®, you can

access non-relational and multivendor data sources—such as IMS™, VSAM, Oracle, Microsoft® SQL server and more.

With QMF you can also eliminate “per seat” charges. The server-based licensing allows for an unlimited number of users per license and requires no database gateways, middleware or ODBC drivers.



Extending QMF to Windows and the Web

How do you get up and running quickly?

- Use the menu-driven point-and-click Prompted Query and the Table Editor to begin accessing and updating data immediately
- Deliver a wide range of reports—from simple to complex—easily and quickly with QMF forms templates
- Store queries and forms and share them on a variety of platforms across the enterprise
- Connect in minutes via TCP/IP to DB2 Universal Database™ Version 5 or later
- Prototype enterprise business reporting requirements easily
- Get more out of your Microsoft Windows® desktops with your QMF investment—integrate QMF query and reporting into popular Windows applications, including office “suites” and custom applications created with IBM VisualAge® for Basic, Visual Basic, PowerBuilder, C++, spreadsheet macros, and any other OLE 2.0/ActiveX-compliant application.

How do you extend data anywhere?

- Easily populate desktop tools such as spreadsheets with query results
- Launch QMF for Windows from optional icons placed in your spreadsheet toolbars
- Produce output formats such as text and HTML for Web publishing
- Build robust applications rapidly with procedures that can include command passing, calculations, strings and variables
- Use APIs to build custom applications in multiple environments using a variety of languages, including OLE/ActiveX, Assembler, FORTRAN, REXX, COBOL and others
- Deploy QMF in any of 15 national languages
- Connect your end users and custom applications to multiple DB2 platforms over a private network or the Internet
- Enhance the formatting of Web-ready pages with HTML commands added to your standard QMF forms
- Build and access datamarts quickly and easily (for example, store a DB2 Universal Database for OS/390® result set on another DB2 platform).

How do you scale up?

- Support any DB2 database directly on any platform with a single tool set, from the smallest single-processor server to the multinode OS/390 Parallel Sysplex® cluster
- Leverage advanced DB2 data access features, including execution of all DB2-specific SQL, DB2 stored procedures, dynamic or static SQL and uncommitted read
- Distribute processing automatically with support for workload balancing on DB2 Universal Database for OS/390
- Schedule reporting tasks, such as overnight runs to a Web server, to optimize system utilization or to accommodate specific timing requirements
- Include non-relational and other vendor databases—such as IMS, VSAM, Oracle, Microsoft SQL Server—with built-in support for DB2 DataJoiner
- Ensure Year 2000 and Euro currency readiness
- Share QMF queries, reports and procedures with other QMF users on MVS, VSE, VM and DB2 Universal Database platforms.

“QMF is a strategic product for providing flexible, easy reporting in our data warehouse environment. With minimal training, even our end users are able to quickly produce professional reports, which help to analyze and answer today’s business questions.”

–Robert Goodman, Database Administrator, MIS Department, Florida Hospital

How do you conduct business while managing and controlling your resources?

- Use QMF tracking to keep tabs on what users are doing in your QMF environment
- Use QMF governing to set up groups and maintain tight control over user group permissions at each database server
- Pinpoint and respond to potential problem areas, such as users canceled frequently by the QMF governor or very heavily used dynamic SQL that absorbs database server resources
- Convert heavily used QMF for OS/390 production reports automatically into well-structured, efficient COBOL programs that can execute static SQL and be ported to other environments
- Manage resource consumption (including rows fetched, TSO CPU time, server timeouts and other restrictions) automatically by group, by server and by precise schedules such as time of day, day of week and calendar dates
- Restrict a wide range of user actions by schedule and group, such as blocking access to a database server or execution of key SQL verbs such as DELETE
- Leverage the predictive governor in DB2 Universal Database for OS/390 and your existing DB2 security.

The QMF family

The QMF family of integrated tools described below is available as features of DB2 Universal Database for OS/390 and DB2 for VSE & VM. QMF for Windows is also available as a stand-alone workstation product licensed to access DB2 workstation databases only.

QMF for OS/390

- Runs under TSO, IBM CICS®
 - Accesses all DB2 S/390® and DB2 Universal Database workstation servers (and other data sources through DB2 DataJoiner).
- Separately available feature: QMF High Performance Option for OS/390*
- Runs under TSO
 - Provides comprehensive object tracking, enhanced governing, job canceling and automated report compiling capabilities for the QMF for OS/390 environment
 - Includes QMF for Windows at no additional charge.

QMF for VM

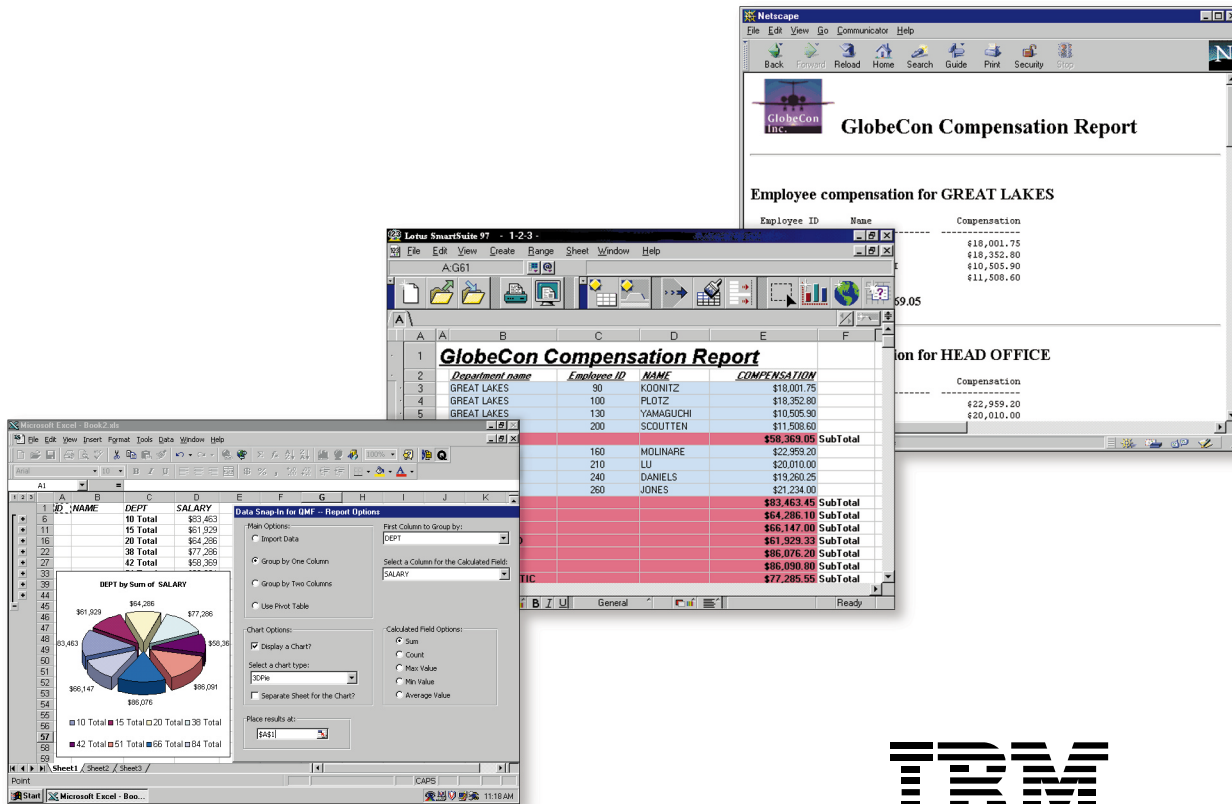
- Runs under CMS
- Accesses all DB2 S/390 and DB2 Universal Database workstation servers (and other data sources through DB2 DataJoiner).

QMF for VSE

- Runs under IBM CICS on VSE/ESA™
- Accesses the local VSE server or VM using guest sharing.

QMF for Windows

- Runs under Windows 3.x, 9x, Windows NT®
- Accesses all DB2 databases using DRDA® (and other data sources through DB2 DataJoiner)
- Uses QMF for Windows CLI connectivity to DB2 Universal Database 5.2 or later and DB2 Universal Database for OS/390 (through DB2 Connect™).



QMF lets you deploy reports on terminals, Windows or the Web and exploit the unique formatting capabilities of each medium (such as graphics or drill down) as shown above.

The QMF family of integrated tools provides your data management environment the most robust enterprisewide management, administration, query, reporting and table updating available today.

Download a free 60-day evaluation version of QMF for Windows from our Web site, and get free integration applets that work from within Lotus® 1-2-3®, Microsoft Excel and Microsoft Access.

For more information

To find out how QMF can help you answer the critical questions facing your enterprise today, contact your IBM marketing representative or IBM authorized software reseller, or visit our Web site at www.ibm.com/qmf.

© International Business Machines Corporation 1999

IBM Corporation
 Santa Teresa Laboratory
 555 Bailey Avenue
 San Jose, CA 95141

Produced in the United States of America
 7-99

All Rights Reserved

CICS, DataJoiner, DB2, DB2 Connect, DB2 Universal Database, DRDA, IBM, IMS, OS/390, Parallel Sysplex, QMF, S/390, VisualAge and VSE/ESA are trademarks of International Business Machines Corporation in the United States, other countries or both.

Lotus and 1-2-3 are trademarks of Lotus Development Corporation in the United States, other countries or both.

Microsoft, Windows and Windows NT are trademarks of Microsoft Corporation in the United States, other countries or both.

Other company, product or service names may be trademarks or service marks of others.

References in this publication to IBM products or services do not imply that IBM intends to make them available in all countries in which IBM operates.



Printed in the United States on recycled paper containing 10% recovered post-consumer fiber.



GC26-9181-01