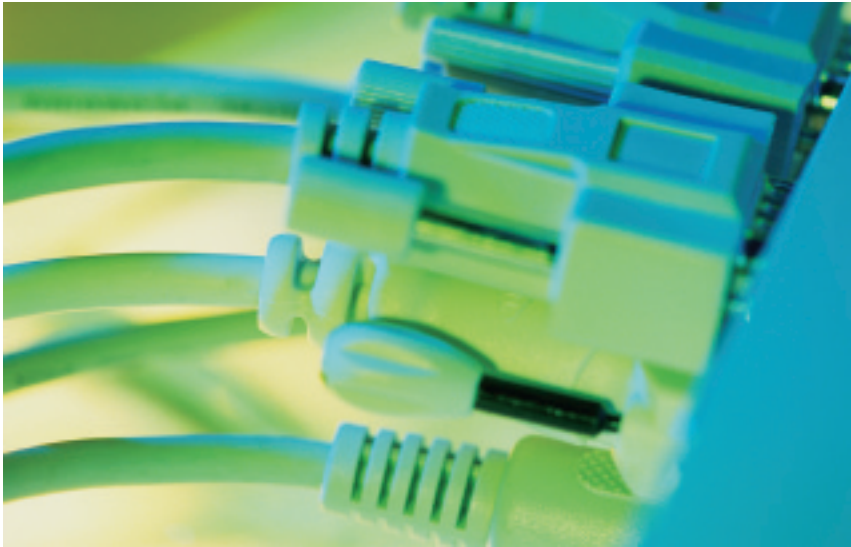


## IBM DB2 Connect



---

### Highlights

---

- ***Provide high-performance access from your Microsoft® Windows® applications to host databases and extend the reach of host data to the Internet***
- ***Develop applications using Java™ technology, Linux® and other popular tools, languages and operating systems***
- ***Create e-business solutions using the tools that come with IBM DB2® Connect™***

### **Connect any desktop application to enterprise data**

Integration is the key to realizing cost efficiencies in today's business environments. By linking desktop PCs to enterprise databases on backend servers, you can leverage existing IT investments and save the costs of retraining employees. At the same time, Web-enabling host data can unite distributed workforces, customers and suppliers into efficient value chains.

IBM DB2 Connect provides fast, transparent read-write access to all DB2 family servers on IBM z/OS™, OS/390®, i/OS™ and AS/400® platforms. And with DB2 Connect in conjunction with IBM DB2 Relational Connect, users get transparent, consolidated access to Oracle, Sybase, Microsoft SQL Server and Informix databases.

By utilizing DB2 Connect and DB2 for OS/390 stored procedures, this access can be expanded further to include mainframe data sources and applications such as IBM CICS®, VSAM, IBM IMS™ and IBM MQSeries®. Industry-standard application programming interfaces (APIs) such as ADO, ODBC, DB2 CLI, JDBC™ and SQLJ allow application developers to concentrate on developing applications rather than acquiring skills in proprietary data access mechanisms.

You can also maintain existing security, backup, accounting and other data management procedures while letting Web and desktop applications access host data wherever it resides.

## Direct access, direct benefits

### Robust solution for mission-critical applications

DB2 Connect provides a comprehensive, robust solution for Web and workstation access to enterprise data. The IBM solution includes:

- Support for popular APIs such as ADO, ODBC, OLE DB, DB2 CLI, JDBC, SQLJ and Embedded SQL
- Static and dynamic SQL
- Comprehensive resource management functions such as connection pooling and connection concentrator—vital for building very large-volume, industrial-strength Web applications
- Federated database support for transparent access to DB2 and other data sources
- Static SQL profiling for converting ADO, ODBC, DB2 CLI and JDBC applications to static SQL
- Special optimized catalog for ADO, ODBC, DB2 CLI and JDBC applications to make access even faster

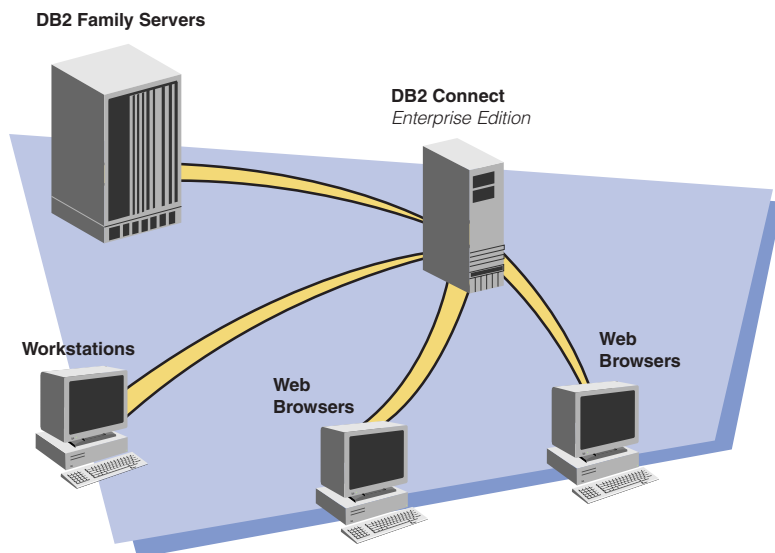
- 2-phase commit support for multi-database update, and support for object-oriented frameworks
- Dynamic load balancing and fail-over support using Workload Manager (WLM), which can prioritize SQL requests submitted by DB2 Connect applications
- Stored Procedure Builder to easily create stored procedures for DB2 for OS/390
- A GUI Control Center for easy administration, performance monitoring and setup of workstations and DB2 for OS/390 databases
- Monitoring capabilities integrated with the Windows NT® and Windows 2000 performance monitor and third-party monitoring products
- Support for several authentication schemes and single sign-on capability with industry-standard Kerberos and Microsoft Active Directory

- Encryption of user IDs and passwords to protect them from becoming compromised
- Integration with IPSec and SSL security protocols.

### Bring Web and host data together

DB2 Connect provides broad support for developing and deploying applications using the latest Web technologies, helping you in many cases to reduce development time and the cost of ownership for applications and enhancements. DB2 Connect provides the fastest, most efficient way to deliver enterprise data to your application server whether you're using:

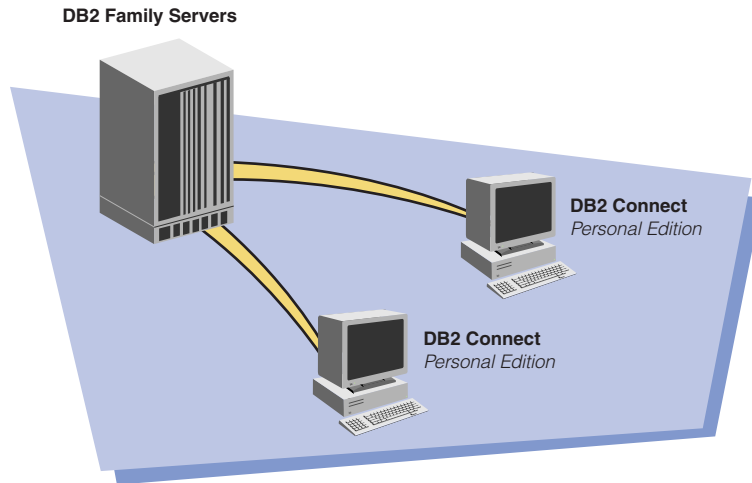
- Implementations based on Java technology
- Microsoft Active Server Pages
- .NET
- Allaire ColdFusion
- Microsoft Transaction Server (MTS) and COM+
- JTA (Java Transaction API)-enabled object-oriented frameworks.



With DB2 Connect Enterprise Edition, you can connect all your client applications to host DB2 data.

### Build applications using Java technology

DB2 Connect supports the latest levels of Java APIs, including JDK 1.3, JDBC 2.0 and JTA 1.0. It also provides two types of JDBC drivers. The net driver is a 100% Pure Java driver that allows programmers to develop Java applets that communicate with databases through DB2 Connect. The application driver provides additional functionality and top performance for implementing complete Java applications. You can leverage today's most advanced server-side Java technology such as JavaServer Pages™ (JSP™), servlets and Enterprise JavaBeans™ (EJB™). In addition to JDBC, DB2 Connect also provides a complete set of tools for developing Java applications using embedded SQL and SQLJ APIs. Now Java developers can get the security and performance of static SQL.



*With DB2 Connect Personal Edition, any client application can directly access host DB2 data.*

Stored Procedure Builder, a part of DB2 Connect, allows programmers to build stored procedures without having to learn the intricacies of Java support on OS/390. Now the entire application from front to backend can be built using a single, cross-platform programming language.

DB2 Connect Server ships with a complimentary copy of IBM WebSphere® Application Server, a leading Java application server. DB2 Connect supports other popular Java application servers such as BEA WebLogic, Allaire JRun and several others.

### Host data and transactions on the go

Empowering mobile workers is a key to success in today's fast-moving markets. DB2 Connect—in combination with DB2 Everyplace™—allows your mobile workers to take their mission-critical applications and data on the road using traditional notebook computers or the new generation of handheld devices and mobile phones. Targeted to occasionally connected users, these applications do not require connectivity to the database server to function; transactions processed on the road are synchronized with the mainframe server data when the application reconnects to the server.

## DB2 Connect products

- *DB2 Connect Personal Edition—enables a desktop workstation to attach directly to host and minicomputer databases, including DB2 Universal Database for OS/390 and AS/400 and DB2 servers for VSE and VM hosts.*
- *DB2 Connect Enterprise Edition—enables mid-tier Web and application servers to connect to mainframe databases. It can also be used as a mid-tier gateway server for many users requiring host database access. Complimentary copies of IBM WebSphere Application Server and IBM Net.Data® are included.*
- *DB2 Connect Unlimited Edition—provides unlimited use of DB2 Connect, licensed against a connection to an existing DB2 Parallel Sysplex® cluster.*
- *DB2 Connect Web Starter Kit—is essentially the same as the DB2 Connect Unlimited Edition except the duration of the license is limited to nine months. This kit provides a low entry cost for customers who want to start a pilot project with access to DB2 Universal Database for OS/390 and z/OS or DB2 servers for VSE and VM hosts.*

## For more information

Please contact your IBM marketing representative or an IBM Business Partner, or call 1-800 IBM CALL within the U.S. Also, visit our Web site at [ibm.com/software/data/db2/db2connect](http://ibm.com/software/data/db2/db2connect)



## DB2 Connect overview

### Host databases supported

- DB2 for MVS/ESA® Version 3.1 and Version 4.1
- DB2 for OS/390 Version 5.1 (or higher)
- DB2 for AS/400 Version 3.1, DB2 for AS/400 Version 4 (or higher)
- DB2 Server for VSE & VM Version 5.1 (or higher)
- SQL/DS™ Version 3.5

### Server platforms supported

- Windows NT (Microsoft BackOffice certified)
- Windows 2000
- IBM OS/2®
- IBM AIX®
- Linux for IBM S/390
- HP-UX
- Sun's Solaris™ Operating Environment
- SCO
- Linux

### Client platforms supported

- Windows NT (32-bit code)
- Windows 95 (32-bit code)
- Windows 98 (32-bit code)
- Windows 2000
- IBM OS/2 (32-bit code)
- IBM AIX
- HP-UX
- SCO UnixWare (V5.2)
- Sun's Solaris Operating Environment
- Silicon Graphics IRIX
- Linux

### Standards compliance

- DCE Security services
- SNMP agent
- X/Open XA
- X/Open CLI
- ODBC Level 3
- JDBC Level 2.0
- JDK Level 1.2
- SQL J
- ANSI SQL92 Entry
- SQL3 features
- FIPS 127.2

© Copyright IBM Corporation 2001

IBM Corporation  
Silicon Valley Laboratory  
555 Bailey Avenue  
San Jose, CA 95141  
U.S.A.

Printed in the United States of America  
06-01  
All Rights Reserved

AIX, AS/400, CICS, DB2, DB2 Connect, DB2 Universal Database, the e-business logo, IBM, the IBM logo, i/OS, IMS, MQSeries, MVS/ESA, Net.Data, OS/2, OS/390, Parallel Sysplex, S/390, SQL/DS, WebSphere and z/OS are trademarks or registered trademarks of International Business Machines in the United States, other countries or both.

Microsoft, Windows and Windows NT are registered trademarks of Microsoft Corporation, in the United States, other countries or both.

Java, all Java-based trademarks and logos, and Solaris are trademarks of Sun Microsystems, Inc. in the United States, other countries or both.

UNIX is a registered trademark of The Open Group in the United States and other countries.

Linux is a registered trademark of Linus Torvalds.

All other products or product names are trademarks or registered trademarks of their respective owners.

References in this publication to IBM products or services do not imply that IBM intends to make them available in all countries in which IBM operates.



Printed in the United States on recycled paper containing 10% recovered post-consumer fiber.



GC26-9182-03