



IBM DB2 Installer

Technical Summary

IBM DB2® Installer provides a graphical user interface for installing IBM DB2 Universal Database™ Server for OS/390® from a workstation. An element of the DB2 Management Tools Package, DB2 Installer provides an alternative to the ISPF installation panels and CLISTs currently used on OS/390 systems.



Whether you are customizing DB2 Universal Database for OS/390 for the first time or are an experienced installer, you can use DB2 Installer to increase your productivity. The DB2 Installer application illustrates the overall installation process and keeps a graphical record of how each subsystem is defined.

DB2 Installer is a "command center" from which you can install, migrate or update DB2 for OS/390. The graphical interface follows an easy-to-read map through the entire installation process including SMP/E, fallback and sample jobs. In addition, it provides a graphical record of completed and uncompleted tasks by subsystem.

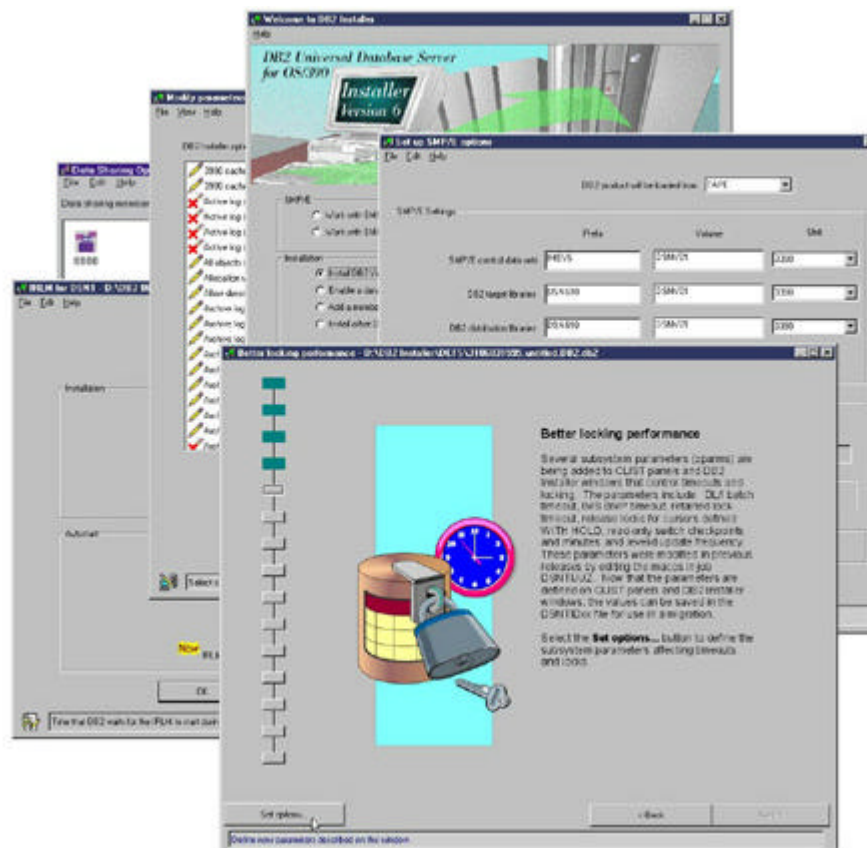
You can customize the DB2 subsystem as much or as little as needed using DB2 Installer. You can install a basic subsystem quickly or modify every installation option. DB2 Installer presents parameters that you must customize in the main windows, while parameters that can take default values are available in secondary windows. Help options are available throughout DB2 Installer.

Once your DB2 subsystem settings have been customized, DB2 Installer gives you the option of using a TCP/IP connection to either transfer the edited jobs to the host or send the jobs directly to the OS/390 system execution queue.

No installation, migration or update functions are sacrificed for ease of use. DB2 Installer makes it easy to change the subsystem parameters as well as keep track of the settings for several different subsystems. If the application is installed on a LAN, several users can share the access and tracking of DB2 subsystem settings. The flexibility of DB2 Installer allows you to use it in a way that best meets the needs of your site.

Installation customization categories

- **Installation.** DB2 Installer prompts the user for the appropriate fields necessary to customize DB2 for OS/390 installation jobs. You can use DB2 Installer to edit and run these installation jobs from your workstation or upload them to the host for execution.
- **Migration.** DB2 Installer generates DB2 for OS/390 migration jobs. DB2 Installer makes you aware of parameters you might want to customize to take advantage of new functions. It also generates an optional set of jobs that check for catalog consistency and other migration considerations.
- **Update.** You can use the update function in DB2 Installer to modify the current parameters. DB2 Installer saves each updated set of parameters in a unique file. Saving the files in the same directory makes it easy to change back to a previous set of parameters.
- **Data sharing support.** You can use DB2 Installer to enable, add or migrate data sharing members.
- **SMP/E.** You can also customize and run SMP/E jobs for DB2 for OS/390 from DB2 Installer.



Install other tools

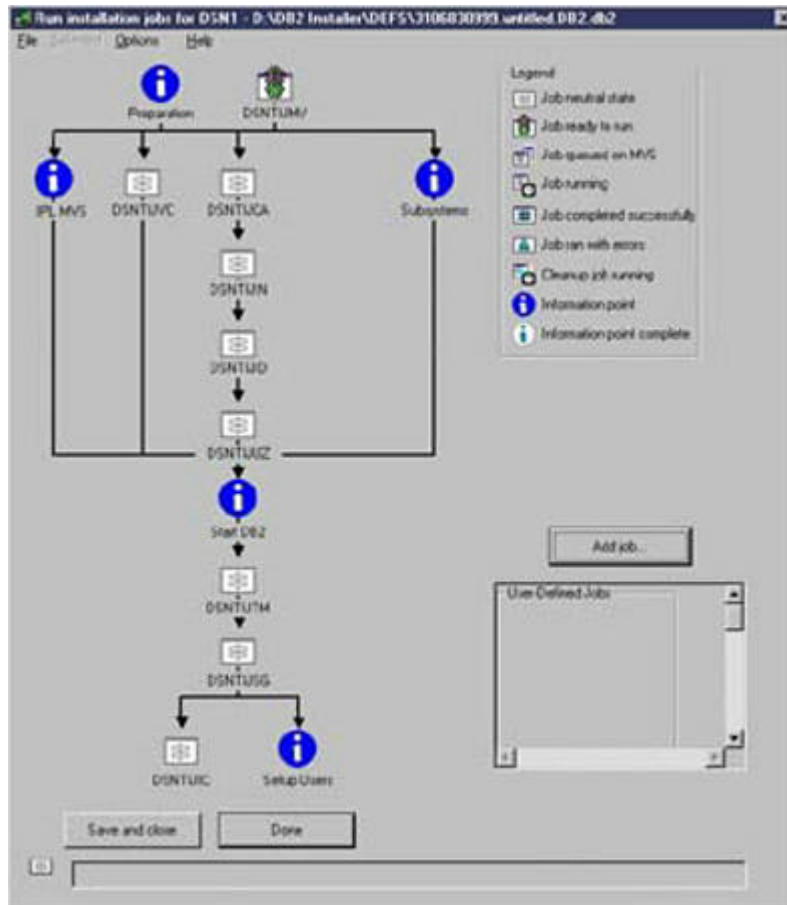
DB2 Universal Database Server for OS/390 Version 6 includes several features and tools for managing your enterprise. DB2 Installer provides a consistent interface for installing several of these tools such as IBM DB2 Performance Monitor and IBM DB2 DataPropagator™.

Edit and run installation jobs from a workstation

Job status windows are provided for each task within DB2 Installer. The window shows a top-down flow for job execution. Unique icons clearly depict the current state of each job. As each job completes, the job icon changes to reflect the new status.

You can override a status through a pull-down menu, enabling you to complete job execution outside of DB2 Installer and yet maintain an accurate depiction of what has been completed. From the drop-down menu, you can select Edit JCL, Run, View SYSOUT, Cleanup and Override status. Any job-specific help text is displayed when Edit JCL is selected. You can add your own specific jobs with the correct execution sequence, by specifying the prerequisites and post-requisites for each user job.

Special requirements such as manual tasks and related OS/390 considerations are listed in Information Point windows. The Information Point window presents items that must or can be performed outside the DB2 subsystem environment or the DB2 Installer application. The Information Point window is a selectable list of "To Do" and "Completed" items. Items in both lists expand into help text windows when selected. Associated with the selected item is a notation field. You can add comments or pertinent information in this field.

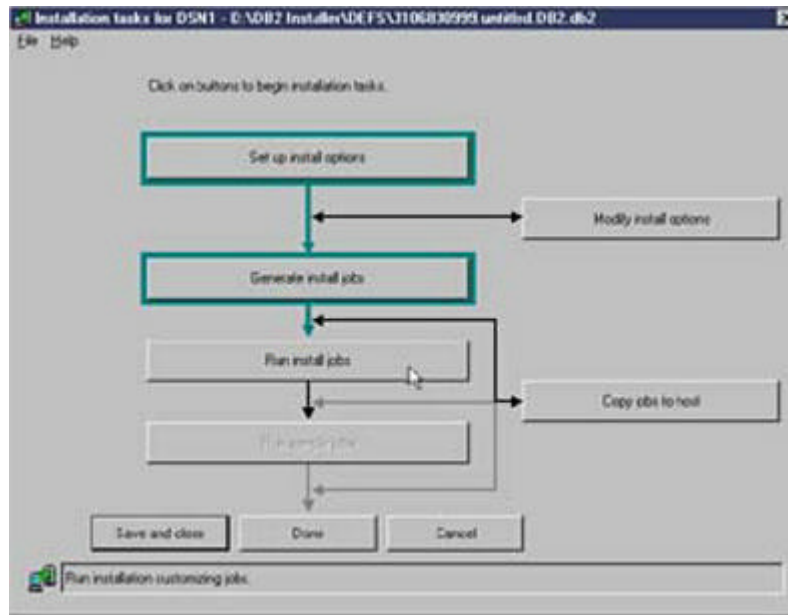


Increase productivity

DB2 Installer uses a graphical user interface (GUI) to provide straightforward steps to install, migrate or update DB2 for OS/390. The graphics indicate a path to follow for running jobs. The windows have a consistent look and feel regardless of which task group you select. When you move your cursor over a field, a brief description of that field appears at the bottom of the

screen. A full help text for each window is also available. For more detailed help, you can refer to the DB2 manuals. You can also use the DB2 Installer help information as a training tool for new functions or new users.

With DB2 Installer, you can tell at a glance which tasks have been completed and which tasks await execution. Communication between members of a team is easy when all members have access to the files for a given DB2 subsystem and are using DB2 Installer.



Hardware requirements

- PC workstation with 1024 X 768 or higher display resolution
- 24 Megabytes of RAM
- 10 Megabytes of storage

Software requirements

To run DB2 Installer on OS/2®:

- OS/2 Warp 4.0
- Either TCP/IP for OS/2 Version 3.0 or OS/2 Warp Connect
- TCP/IP for MVS Version 3 Release 1

To run DB2 Installer on Windows NT:

- Windows NT 4.0
- TCP/IP for MVS Version 3 Release 1.

Obtaining DB2 Installer

DB2 Installer is one of several features and tools offered with DB2 Universal Database Server for OS/390 Version 6:

- [DB2 Administration Tool](#)
- [DB2 Buffer Pool Tool](#)

- [DB2 DataPropagator™](#)
- [DB2 Extenders™](#)
- DB2 Management Tools Package
 - [DB2 Control Center](#)
 - [DB2 Estimator](#)
 - DB2 Installer
 - [DB2 Visual Explain](#)
- [DB2 Performance Monitor](#)
- [DB2 Utilities](#)
- [Net.Data®](#)
- [QMF Family](#)
- [QMF for Windows](#)
- [QMF High Performance Option](#)

Connecting to DB2

[IBM DB2 Connect™](#) enables remote access to data stored in DB2 Universal Database for OS/390 from UNIX®, Windows and OS/2 applications.

To find out more

If you'd like to learn more about DB2 Installer, contact your IBM marketing representative or visit our Web site at www.ibm.com/software/db2os390/.

To download DB2 Installer, visit www.ibm.com/software/db2os390/db2inst/.



© International Business Machines Corporation 1999

*IBM Corporation
 Santa Teresa Laboratory
 555 Bailey Avenue
 San Jose, CA 95141*

*Produced in the United States of America
 7-99
 All Rights Reserved*

DataPropagator, DB2, DB2 Connect, DB2 Extenders, DB2 Universal Database, IBM, Net.Data, OS/2, OS/390 and QMF are trademarks of International Business Machines Corporation in the United States, other countries or both.

Microsoft and Windows NT are trademarks of Microsoft Corporation in the United States, other countries or both.

UNIX is a registered trademark of The Open Group.

Other company, product or service names may be trademarks or service marks of others.

References in this publication to IBM products or services do not imply that IBM intends to make them available in all countries in which IBM operates.