

IBM DB2 Control Center

Technical Summary

IBM DB2® Control Center is the central point from which you can manage your family of DB2 databases, running on an array of operating systems in your workplace. A user-friendly graphical interface makes your job easier by guiding you through each of the steps in managing DB2 Universal Database™.

DB2 Control Center provides a common interface for managing DB2 databases on different platforms. You can run DB2 commands, create DDL (Data Definition Language) statements and execute DB2 utilities. DB2 Control Center's point-and-click navigation capabilities make it easy to find objects, whether you have hundreds or tens of thousands in your database environment.



In support of DB2 Universal Database for OS/390®, DB2 Control Center comes with features that equip you to perform myriad management tasks on DB2 S/390 subsystems, including:

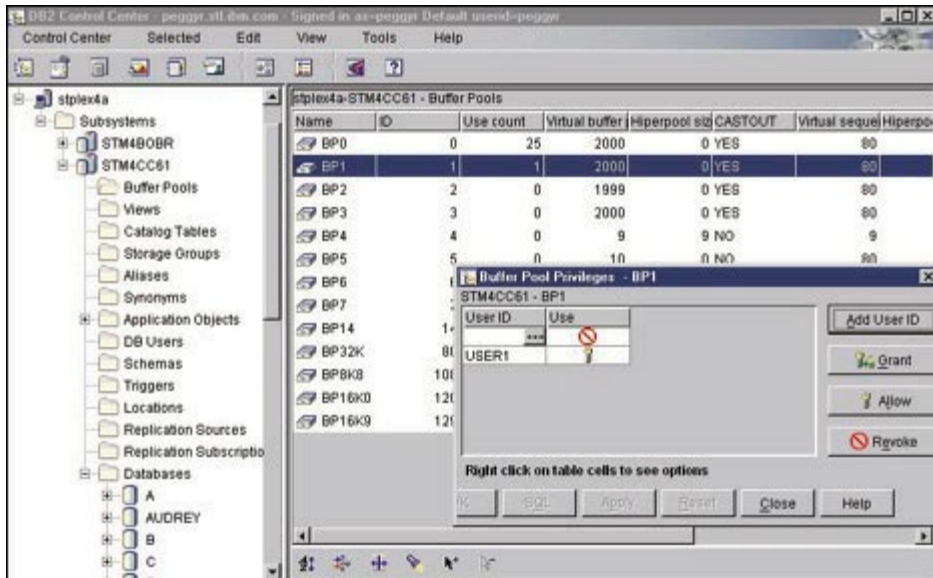
- **Pre-filtering a large number of objects**
- **Locating objects in a subsystem**
- **Creating a customized control center**
- **Providing maintenance support recommendations.**

Written in Java™, DB2 Control Center is available as an application or an applet and supports both Netscape and Microsoft® Internet Explorer browsers.

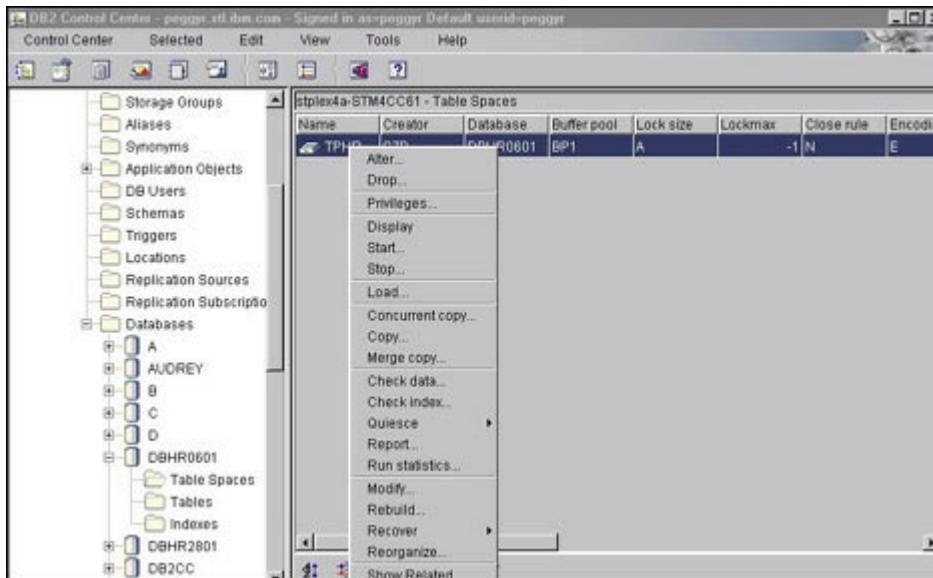
Launching and selecting objects to manage

When you install the administration client, DB2 Control Center is installed and can be launched from the DB2 program folder or by pointing your browser to the SQLLIB\cc\CCLaunch.htm file.

When launched, DB2 Control Center displays the objects comprising your DB2 subsystem. From here, you can select the folder containing the views, buffer pools, storage groups or catalog tables you want to manage.



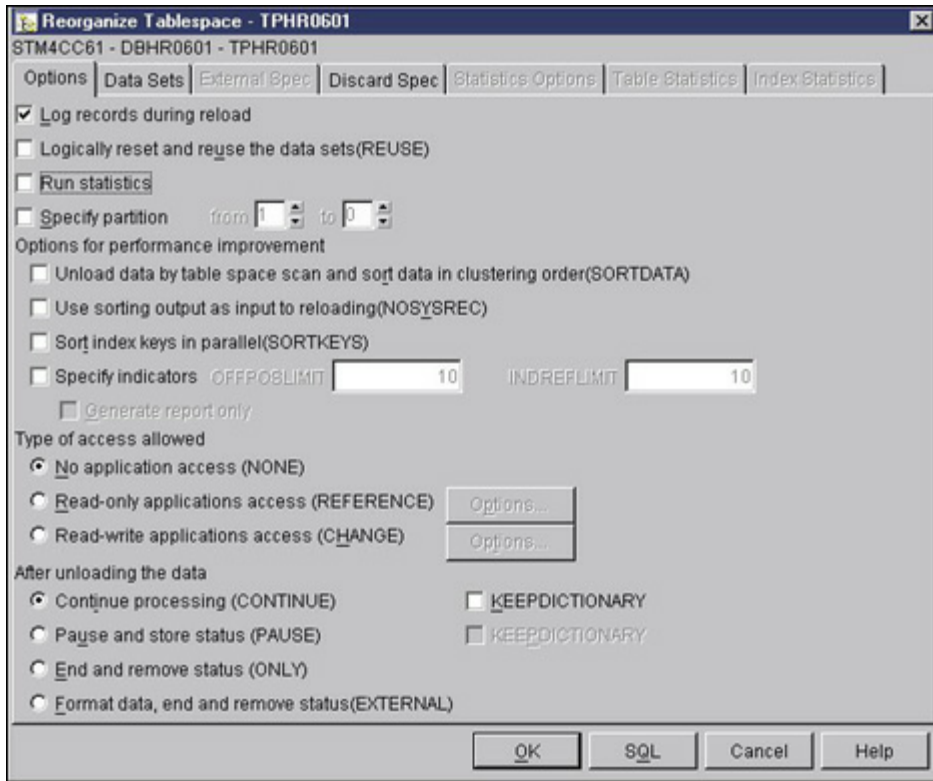
Depending on the size of your database, there are potentially thousands of tasks that DB2 Control Center can help you manage. For example, if you'd like to reorganize tables or tablespaces to speed up query processing, simply click on the appropriate table/tablespace folder in the onscreen catalog. Then, select the "reorganize action" command from the tablespace object to bring up a dialog box that collects the necessary parameters to execute the reorganize utility. Other tasks--such as altering object definitions, loading data or displaying a DB2 command--work in a similar manner; simply point your cursor to select the object that you want to work with, and then select the actions that you'd like DB2 Control Center to complete.



Step-saving features

DB2 Control Center comes with features that streamline your database management responsibilities, helping you get your job done faster and in fewer steps.

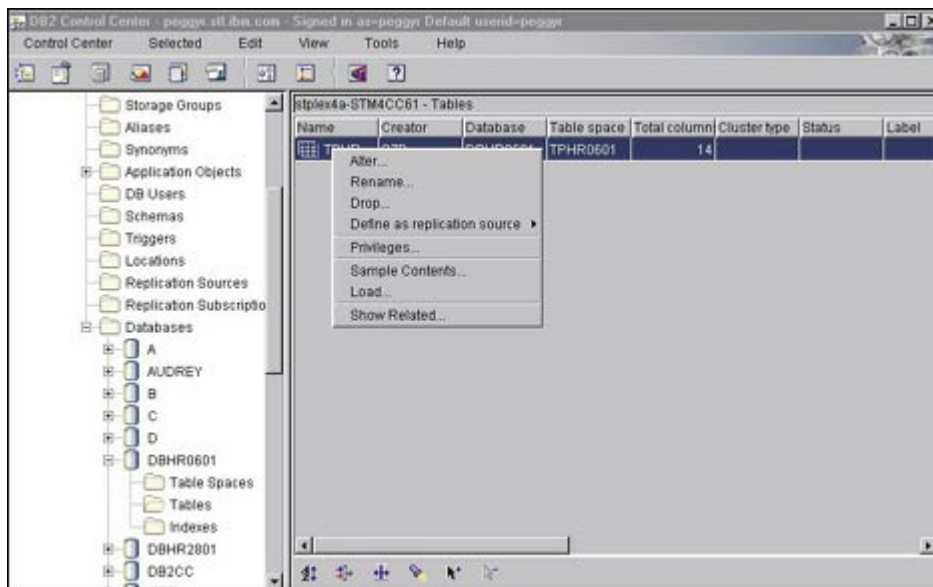
If you're working with a large number of objects, you can pre-filter your selection so that DB2 Control Center retrieves only a specified subset. The pre-filter feature helps reduce network traffic, enabling you to move quickly to the objects you want to work with.



Continuing on this path, you can get even more specific. A feature for locating DB2 subsystem objects enables you to find and retrieve a particular object, such as a table, using specific criteria, much like the "find" command in a word-processing program.

Customizing your DB2 Control Center

DB2 Control Center enables you to create one or more profiles to customize views of your database environment. Using this customization feature, you can eliminate extraneous objects, name your folders, and save these views for later use. You can also save filters in your folders, so that when you select a particular folder, the accompanying filter is executed automatically. When you save filters, you eliminate the need to use the pre-filter feature.

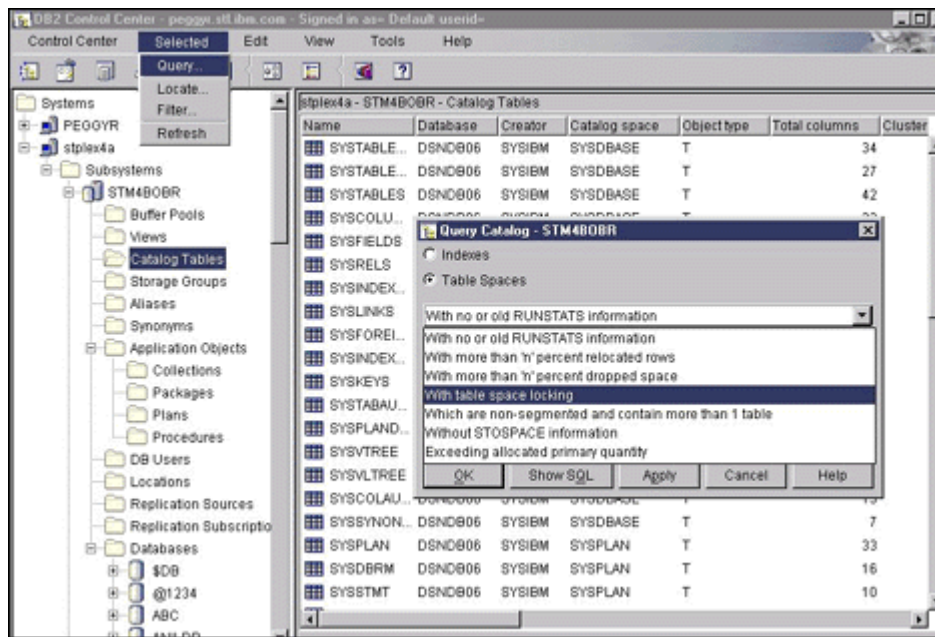


Offering maintenance support

Using the maintenance support functions of DB2 Control Center, you can direct the tool to recommend

certain tasks to be performed on specific object types. The list of recommendations are available as part of the locate function. For example, you can locate old backups or retrieve a list of tablespaces for which the DB2 Control Center recommends the reorganize utility be performed. You can also perform an object search, narrowing the criteria to a set of tablespaces or an index as necessary. This search capability enables you to, for instance, retrieve all of the tablespaces created by a particular user, where the recommended action is to perform the copy utility.

With DB2 for OS/390, more maintenance support functions can be found in the query catalog function. Using this feature, you can run a set of queries to determine what other maintenance support might be needed. For example, you can retrieve a list of tablespaces that either lack or have obsolete RUNSTATS information. Once you receive this list, you can invoke a RUNSTAT utility to eliminate the problem areas.



DB2 Control Center enables you to manage from one to a virtually unlimited number of DB2 servers or subsystems, performing an equally extensive number of actions. The latest version has been modified for large database environments and includes support for OS/390 core utilities. With DB2 Control Center, you have a universal DB2 database administration tool.

Obtaining DB2 Control Center

DB2 Control Center is part of the DB2 Software Developers Kit (SDK) on Windows[®], delivered with all editions of DB2 Universal Database and DB2 Connect[™] products on Linux, OS/2[®], UNIX[®], and Windows.

DB2 Control Center is one of the several features and tools offered with DB2 Universal Database for OS/390 Version 6:

- DB2 Administration Tool for MVS/ESA[™]
- DB2 Buffer Pool Tool
- DB2 DataPropagator[™]
- DB2 Management Tools Package
 - DB2 Control Center
 - DB2 Estimator
 - DB2 Installer
 - DB2 Stored Procedure Builder
 - DB2 Visual Explain for OS/390
- DB2 Performance Monitor for OS/390
- QMF[™] and QMF for Windows.

To find out more

If you'd like to learn more about DB2 Control Center, visit:
<http://www.ibm.com/db2>.



© International Business Machines Corporation 1999

IBM Corporation
Santa Teresa Laboratory
555 Bailey Avenue
San Jose, CA 95141

Produced in the United States of America
5-99
All Rights Reserved

© International Business Machines Corporation 1999

IBM Corporation
Santa Teresa Laboratory
555 Bailey Avenue
San Jose, CA 95141

Produced in the United States of America
5-99
All Rights Reserved

DataPropagator, DB2, DB2 Connect, DB2 Universal Database, IBM, MVS/ESA, OS/2, OS/390, QMF, and S/390 are trademarks of International Business Machines Corporation in the United States, other countries or both.

Microsoft and Windows are trademarks of Microsoft Corporation in the United States, other countries or both.

Java and all Java-based trademarks and logos are trademarks of Sun Microsystems, Inc. in the United States, other countries or both.

UNIX is a registered trademark of The Open Group.

Other company, product or service names may be trademarks or service marks of others.

References in this publication to IBM products or services do not imply that IBM intends to make them available in all countries in which IBM operates.