



IBM DB2 Administration Tool

Technical Summary

As the number and complexity of IBM DB2® applications and systems increases, having the right DB2 management tools is essential. IBM DB2 Administration Tool can help you derive the maximum performance and results from your DB2 system, dramatically reducing the effort required to support DB2.

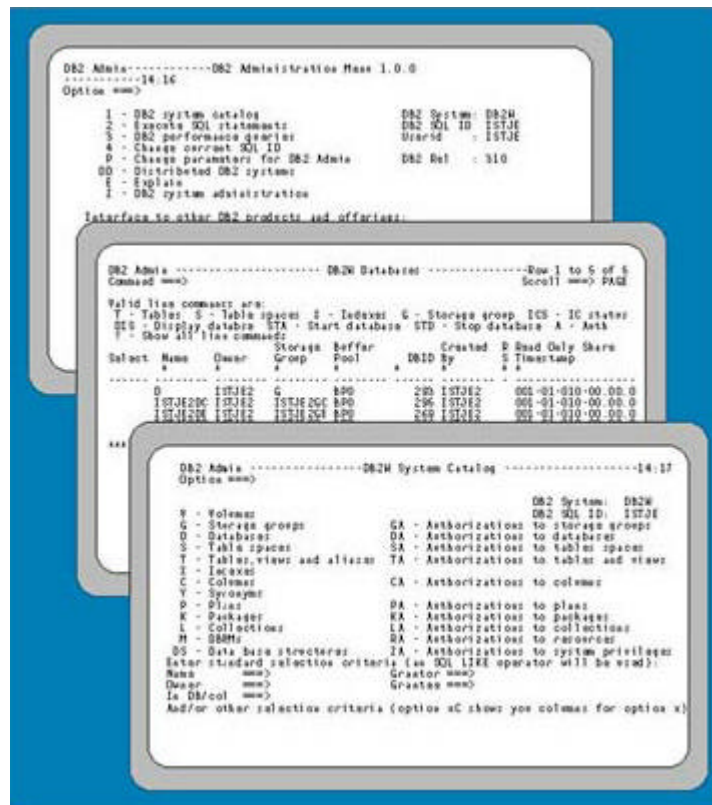
DB2 Administration Tool provides a comprehensive set of functions that help DB2 systems personnel efficiently and effectively manage their DB2 environments. It is an interactive, intuitive and easy-to-use tool. The DB2 Administration Tool Release 2 and the DB2 Administration Tool features included with DB2 Universal Database™ Version 6 have been enhanced to make a database administrator's job easier.

DB2 Administration Tool provides a cost-effective solution for a full range of database administration functions for DB2 for OS/390®:

- *Display and interpret objects in the DB2 catalog*
- *Execute dynamic SQL statistics*
- *Issue DB2 commands against objects*
- *Manage SQLIDs*
- *Simplify system administration functions of everyday DB2 tasks*
- *Perform complex performance and space utilization queries*
- *Update RLIMITS*
- *Display and cancel threads*
- *Manage DDF*
- *Reduce time required to resolve problems*
- *Present relevant DB2 catalog and directory information in a logical format*



- *Discover database problems quickly*
- *Generate JCL and run DB2 utilities.*



Understanding DB2

DB2 Administration Tool provides extensive support that makes it easier to understand and analyze the DB2 catalog, allowing you to quickly act on the information presented. DB2 Administration Tool is an easy-to-use ISPF panel-driven tool which overviews DB2 system tables and provides relevant catalog information in a logical format. For example, DB2 Administration Tool:

- Displays any object in the catalog with predefined predicates for the most commonly used SELECTs on the catalog
- Displays authorization on objects
- Shows the relationship between objects
- Displays the DDL for existing views
- Displays the static SQL of DBRMs and packages
- Provides a quick EXPLAIN function that shows the inserted rows in the PLAN_TABLE
- Shows EXPLAIN of long SQL statements.

Rapid changes and updates

You don't just want a catalog tool that queries DB2; you want to act on the information presented. DB2 Administration Tool gives you the capability to make changes and updates quickly and easily. It integrates with DB2 utilities and simplifies creation of DB2 utility jobs.

The abundant DB2 catalog update functions in DB2 Administration Tool include the ability to:

- Issue any DB2 command
- GRANT and REVOKE on the objects
- BIND, REBIND and FREE for selected plans and packages
- Confirm on DROP
- Copy tables from one DB2 database to another.

Multiple DB2 catalog support

Packed with powerful functionality, DB2 Administration Tool includes support for DB2 DDF, including remote DB2 catalog management, ALIAS support and Communications Database (CDB). In a data sharing environment, DB2 Administration Tool works on a group member basis.

DB2 Administration Tool gives you the option to have catalog functions run on tables containing a copy of the system catalog to avoid potential contention problems.

Extensive SQL support

DB2 Administration Tool provides extensive SQL support. For example, it supports dynamic SQL statement execution without having to know the exact SQL syntax. DB2 Administration Tool handles user-initiated stopping of SQL processing. In addition, COMMIT/ROLLBACK is issued before each display with DB2 Administration Tool.

Using dynamic SQL statements, you can rapidly develop new applications with DB2 Administration Tool or extend existing DB2 Administration Tool applications.

Improved reporting

With the new, improved reporting capabilities of DB2 Administration Tool, you can save the results of an SQL SELECT as an ISPF table. In addition, you can display the saved tables and can print selected columns from these ISPF tables.

Enhancements for DB2 Universal Database Version 5

In an effort to deliver functionality as quickly as possible to DB2 customers, IBM has announced a special programming enhancement to DB2 Administration Tool Release 2.

Now, DB2 Administration Tool provides complete support for DB2 Universal Database Version 5 by providing panels and options that allow you to quickly see new DB2 catalog information. Since the catalog contents and structure vary depending on the version of DB2, DB2 Administration Tool takes this into account and reflects the appropriate view.

In addition, significant new functionality has been added to recreate lost DDL sources. DB2 Administration Tool can reverse-engineer DDL starting from database, tablespace and table objects, as well as all lower-level associated objects. You can regenerate your lost source interactively or as a batch job.

Output of all DDL and DL statements from one invocation is placed in a user-specified sequential data set or a PADS member in a "ready-to-run" SPUFI format.

Enhancements for DB2 Universal Database Version 6

The DB2 Administration Tool feature of DB2 Universal Database Version 6 has been enhanced to:

- Manage the new and modified DB2 objects such as schema, user defined functions, user defined data types, stored procedures and triggers
- Work with large object (LOB) columns and new base data types
- Manage predictive governor limits
- Create and manage optimizer hints
- Work with the new EXPLAIN tables
- Create jobs to backup and recover indexes.

Obtaining DB2 Administration Tool

DB2 Administration Tool is one of several features and tools offered with DB2 Universal Database Server for OS/390 Version 6:

- DB2 Administration Tool
- [DB2 Buffer Pool Tool](#)
- [DB2 DataPropagator™](#)
- [DB2 Extenders™](#)
- DB2 Management Tools Package
 - [DB2 Control Center](#)
 - [DB2 Estimator](#)
 - [DB2 Installer](#)
 - [DB2 Visual Explain](#)
- [DB2 Performance Monitor](#)
- [DB2 Utilities](#)
- [Net.Data®](#)
- [QMF Family](#)
- [QMF for Windows](#)
- [QMF High Performance Option](#)

Connecting to DB2

[IBM DB2 Connect™](#) enables remote access to data stored in DB2 Universal Database for OS/390 from UNIX®, Windows and OS/2 applications.

How to order

When ordering DB2 Administration Tool, DB2 Universal Database Version 5 and earlier customers should specify program number 5688-515. For DB2 Universal Database Version 6 customers, DB2 Administration Tool is a priced optional feature. DB2 Universal Database Version 6 customers should specify program number 5645-DB2.

Try-and-buy program

You will receive DB2 Administration Tool Version 6 when you order DB2 Universal Database for OS/390 Version 6. Test it, free of charge, for a trial period of 90 days. If you decide to keep DB2 Administration Tool, you can order it any time during the trial period. If you do not acquire a license before the trial program ends, DB2 Administration Tool will be deactivated on your system. You can reactivate it, however, with a module that can be ordered separately. It is not necessary to reinstall DB2.

To find out more

If you'd like to learn more about DB2 Administration Tool, contact your IBM marketing

representative or visit our Web site at www.ibm.com/software/db2os390/.



© International Business Machines Corporation 1999

IBM Corporation
Santa Teresa Laboratory
555 Bailey Avenue
San Jose, CA 95141

Produced in the United States of America
7-99
All Rights Reserved

DataPropagator, DB2, DB2 Connect, DB2 Extenders, DB2 Universal Database, IBM, Net.Data, OS/390 and QMF are trademarks of International Business Machines Corporation in the United States, other countries or both.

Windows is a trademark of Microsoft Corporation in the United States, other countries or both.

UNIX is a registered trademark of The Open Group.

Other company, product or service names may be trademarks or service marks of others.

References in this publication to IBM products or services do not imply that IBM intends to make them available in all countries in which IBM operates.