

IBM Content Manager CommonStore for SAP, Version 8

Highlights

- **Integrates SAP and non-SAP documents into a single archive, maximizing system efficiency and performance through prioritized data archiving and external storage**
- **Controls storage space demands and overhead**
- **Scales easily from small archives to enterprisewide content management systems**
- **Improves data security and disaster recovery strategies by creating multiple copies in IBM Tivoli® Storage Manager servers.**



Content Manager CommonStore for SAP puts your business documents within easy grasp of users throughout your enterprise.

Stemming the rising tide of SAP files

Businesses that span the globe turn to SAP® R/3® enterprise resource planning software to provide a 360-degree view into operations. From SAP, companies can track everything from the price of cocoa beans in Ghana and production rates at a Cincinnati plant to inventory levels at a London store.

While this insight can help cut operating expenses and boost productivity, the solution can leave users drowning in R/3 messages, faxes, spreadsheets, microfilm/microfiche and scanned-in legacy business data.

The more business-critical information that your employees accumulate, the more time they must spend locating the right report or document. And even then they often can't obtain a comprehensive view of the business until they integrate the R/3-related

information with documents from third-party applications or branch operations. Meanwhile, they overwhelm IT administrators with constant demands for more disk space, information integration capabilities or data translation.

With IBM Content Manager CommonStore for SAP, Version 8, an integrated data archival, management and distribution solution for SAP R/3, you can provide fast, secure and convenient access to your business content while minimizing resource consumption. By linking archived information to SAP business objects, CommonStore for SAP makes business documents, from purchase orders to inventory level reports, available within seconds to authorized users anywhere on your network.

Information integration and retrieval for your dynamic business

Fast, flexible data storage and retrieval

CommonStore for SAP relieves the pressure on your R/3 database and improves its performance by routing inactive data to an external archive. Millions of SAP objects can be stored on relatively inexpensive media such as optical disks and tape libraries. From there, business content can be retrieved and distributed electronically in a few seconds. This saves time and money and promotes faster, more accurate customer service, supply-chain planning and other functions that depend on realtime data availability.

Through support for the R/3 DocFinder feature, CommonStore for SAP lets users search across all content stored in the backend repository, such as IBM Content Manager— not just what was already linked to R/3 records. This capability enables users to look for memos, spreadsheets and messages generated by other enterprise applications. Documents can be displayed from the SAP graphical user interface. Non-SAP users in your enterprise can access the information through the Content Manager client.

To improve archiving performance and ease of use, a single CommonStore for SAP archiving client provides the ability to send documents to different SAP systems, without having to switch SAP environments while sending. Data and documents can also be archived to multiple IBM Tivoli Storage Manager servers. The archived information can be retrieved from any of the servers.

Making custom integration simple

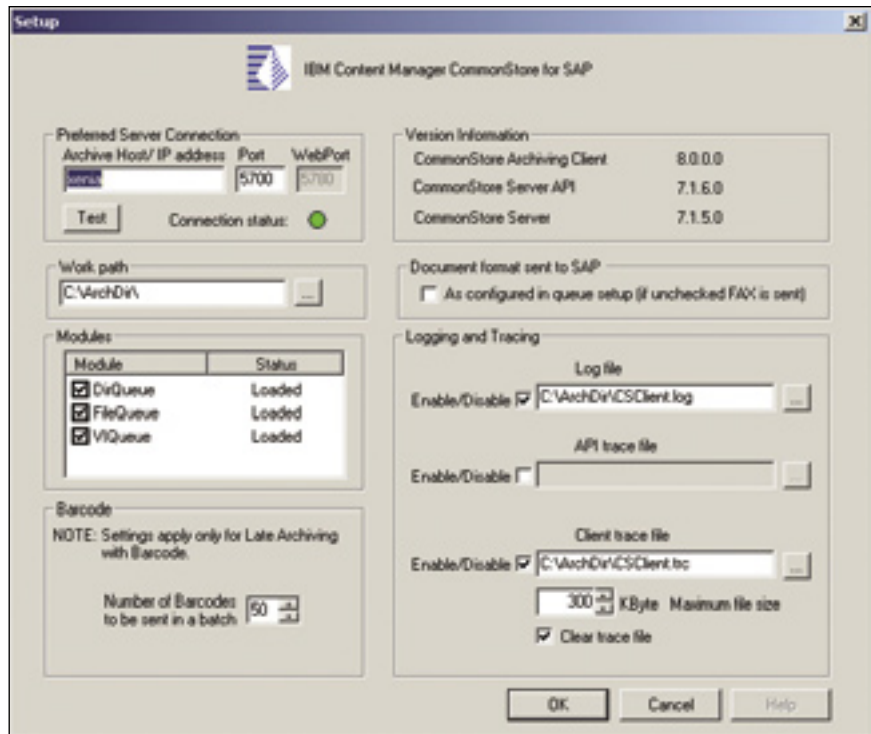
CommonStore for SAP offers new Java™ technology-based user exits which allow more flexible integration with third-party products. This new flexibility also means administrators can more easily add custom features to fit their companies' unique requirements, such as converting documents into TIFF files for long-term archiving in CommonStore for SAP.

The latest version of CommonStore for SAP allows printed forms to be archived exactly as printed, without further coding or processing in SAP. This happens through support for the forms management and overlay application from third-party vendor Lasersoft, which is commonly used in mass-printing jobs. Large volumes of monthly billing statements or similar documents can be easily archived as they are and also printed.

Easy to manage as part of your enterprise system

To optimize your SAP R/3 system, CommonStore for SAP captures relevant system performance data in the CommonStore server log file. This information helps administrators determine how to balance their machine load—for example, the optimal number of processes for the given workload and environment.

For peace of mind, CommonStore for SAP supports SAP and backends running in high-availability IBM AIX® environments. By integrating CommonStore for SAP with Tivoli Storage Manager, you can create another route to easy backup, so that documents can be stored simultaneously in more than one Tivoli Storage Manager server.



Using Content Manager CommonStore for SAP, you can offload data, reduce the size of your operational database and enhance system performance.

Secure and reliable on any platform

CommonStore for SAP is a natural fit for nearly any SAP environment, featuring:

- *MySAP.com™ certification, which ensures smooth integration with the full range of SAP e-business software modules*
- *Reliable document security through simultaneous copying to multiple archives*

- *Euro currency compliance*
- *Availability in native AIX, Microsoft® Windows NT®, Windows® 2000, Sun Solaris Operating Environment, IBM AS/400® and HP-UX versions*
- *Support for archives on the IBM OS/390® and z/OS™ platforms.*

Part of a complete content management infrastructure

CommonStore for SAP is an element of the IBM Enterprise Content Management portfolio. With support for open standards and combined with any of the IBM repository choices, such as Content Manager on multiple platforms or Tivoli Storage Manager, this function-rich tool empowers you to manage the full spectrum of digital information generated in today's e-business world. Used with other solutions in the family, CommonStore for SAP can be part of an information integration strategy that fosters widespread use of your enterprise content. A similar solution, Content Manager CommonStore for Lotus® Domino™, supports Lotus Domino users. Likewise, Content Manager CommonStore for Exchange Server provides an integrated electronic archiving solution for Microsoft Exchange Server.

With CommonStore for SAP, you can leverage the valuable information generated by your organization's business processes. By doing so, you can lower your operating costs, raise workforce productivity, sharpen customer service and enhance your organization's overall responsiveness.

For more information

Please contact your IBM marketing representative or an IBM Business Partner, or call 1-800 331 1763 within the U.S. Also, visit our Web site at ibm.com/software/data/commonstore/sap



© Copyright IBM Corporation 2002

IBM Corporation
Silicon Valley Laboratory
555 Bailey Avenue
San Jose, CA 95141
U.S.A.

Printed in the United States of America
05-02
All Rights Reserved

AIX, AS/400, DB2, the e-business logo, IBM, the IBM logo, OS/390, Tivoli and z/OS are trademarks or registered trademarks of International Business Machines Corporation in the United States, other countries or both.

Domino and Lotus are trademarks or registered trademarks of Lotus Development Corporation and/or IBM Corporation.

Java is a trademark of Sun Microsystems, Inc., in the United States, other countries or both.

Microsoft, Windows and Windows NT are registered trademarks of Microsoft Corporation in the United States, other countries or both.

MySAP.com, R/3 and SAP are registered trademarks of SAP AG in the United States, other countries or both.

All other products or product names are trademarks or registered trademarks of their respective owners.

References in this publication to IBM products or services do not imply that IBM intends to make them available in all countries in which IBM operates



Printed in the United States on recycled paper containing 10% recovered post-consumer fiber.



GC27-1682-00