

IBM Content Manager CommonStore for Lotus Domino, Version 8

Highlights

- **Archives e-mail and documents easily while adhering to auditing and corporate requirements for long-term storage**
- **Provides cost-efficient, expanded storage capacity, improves application performance and seamlessly integrates with Lotus® Domino™ environments**
- **Rapidly retrieves documents when you need them**
- **Relieves IT administrators of the burden of maintaining overgrown e-mail and Lotus Notes® databases.**



Manage e-mail overload with Content Manager CommonStore for Lotus Domino.

Managing the information deluge

Little did companies know when designing their IT infrastructures how much space e-mails and other business documents would consume on desktop computers, servers and networks. But as e-business flourishes, it's no surprise that people rely heavily on e-mail and associated attachments to conduct their transactions.

This is certainly true in Lotus Domino. Yet, such information excess can impact the performance of business-critical applications, which, in turn, can affect customer service.

Still, users need to keep documents so they can locate details about a business transaction or respond to litigation. Furthermore, many electronic transactions must be retained as if they were paper. For instance, companies may be required by law to maintain certain types of electronic documents, such as online mortgage and insurance applications and securities transactions.

Companies like yours may be facing this dilemma, unable to delete documents and facing an increasing number of servers and storage devices.

Practical e-mail management with industry-leading software

To address these challenges, IBM has developed IBM Content Manager CommonStore for Lotus Domino, Version 8. This powerful, easy-to-use archive solution utilizes IBM Content Manager and supports all Lotus Domino platforms, including IBM AIX®, AS/400®, OS/2® and S/390®; Linux®; Microsoft® Windows NT®/2000; HP-UX and Sun Solaris Operating Environment.

With CommonStore for Lotus Domino, your organization can safeguard itself without suffering from swollen e-mail inboxes and escalating storage bills. Regardless of when they were saved, all archived documents are at your disposal—reducing time-wasting searches across disparate sources.

More efficient use of your precious storage space



Content Manager CommonStore for Lotus Domino is part of the integrated IBM Content Manager portfolio for enterprise content management.

CommonStore for Lotus Domino enables you to archive e-mails, attachments or entire folders from your Lotus Domino databases to a shared repository for secure, long-term storage. You can also archive file attachments separately from their originating e-mail messages, a very useful function given that attachments are the major storage-space consumers in mail applications.

Thanks to its seamless integration with the Lotus Domino database, the solution lets you conveniently offload attachments, complete documents or folders from the operational Domino databases to Content Manager and still be able to display them directly from a Lotus Notes client, a Web browser or even from Lotus iNotes. You can also access this information from any Content Manager or Content Manager OnDemand client.

Faster, easier administration

CommonStore for Lotus Domino, provides you with the following new features:

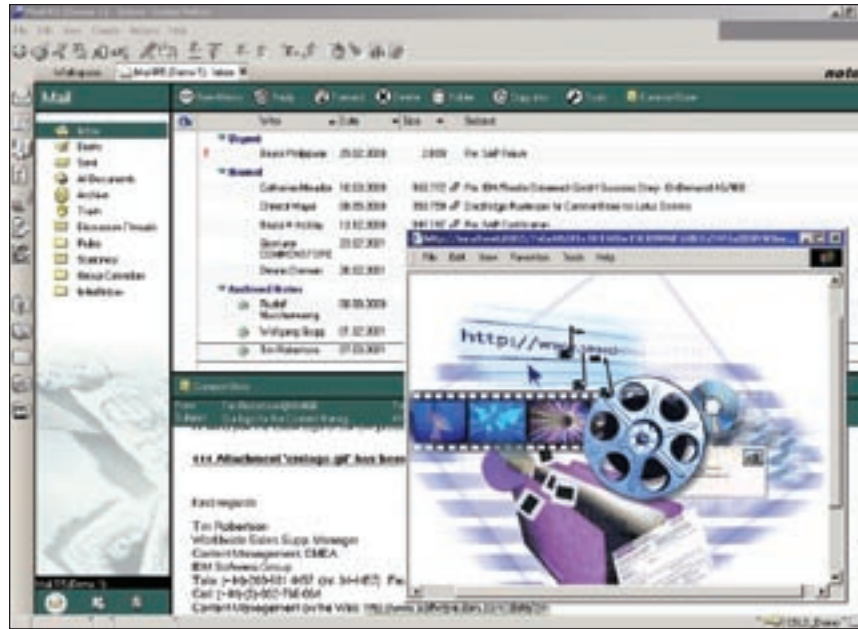
- *Administrators can easily set up archival policies, and CommonStore for Lotus Domino automatically executes them without user involvement or custom programming. An automatic process can be set up to check whether e-mails meet the criteria defined in policies. If e-mails meet the criteria, archiving requests are created for them.*

- *With support for Content Manager views, the Content Manager administrator can assign each user a specific view of data without creating additional index or index class definitions. This enhancement provides better security, reduces server load and improves performance whenever security restrictions for document access are required. Service providers with multiple user groups can limit customers to their own documents without creating any index or index class definitions.*
- *Extended backend support is available from Content Manager for iSeries™, Version 5.1; Content Manager OnDemand for iSeries, Version 5.1; Content Manager OnDemand for OS/390®, Version 7.1 and IBM Tivoli® Storage Manager, in addition to the backends supported in earlier releases.*

Reduced costs and better customer service

With CommonStore for Lotus Domino, you realize the following benefits:

- *Cost-efficient, expanded storage capacity—Millions of e-mails or attachments can be stored on inexpensive media, such as optical disk jukeboxes and tape libraries, which replace costly hard disks*
- *Improved server performance—Because you can move older, inactive documents to an external archive, the size of your Lotus Notes database is trimmed—enhancing the performance of Lotus Domino servers and decreasing the size and the number of backup windows in Lotus Domino databases*
- *Better customer service—Intelligent data management functions within Content Manager enable immediate access to essential documents and applications, regardless of their location in your network, so you can answer customers' questions expeditiously*
- *Easy integration with existing environments—Since client software is not required on Lotus Domino desktops, CommonStore for Lotus Domino can be easily incorporated into your existing infrastructure*
- *Centralized archive storage and administration on a choice of robust, scalable and secure platforms.*



With Content Manager CommonStore for Lotus Domino, users can reduce the size of their Lotus Notes databases and improve system performance.

Flexible format

CommonStore for Lotus Domino supports the storage of Lotus Notes documents in Notes native format, a unique feature that enables you to transfer an entire document to the archive, then restore it back into your database as a Lotus Notes document. This ensures that your document is completely restored to its original form, allowing you to execute any Lotus Notes function—such as editing, forwarding or launching attachments.

The solution also supports conversion of Lotus Notes documents to industry-standard formats, providing more viewing options and further reducing storage requirements. An exit is included for conversion to other formats, such as TIFF, prior to archiving—a useful feature for long-term archiving.

Extend existing Lotus Notes applications

CommonStore for Lotus Domino encompasses more than e-mail archiving. In fact, it can be used for practically any other Lotus Notes application. A Lotus script library, which comes with the product, can easily be added to an existing Lotus Notes application. In just a few moments, the buttons for archival and retrieval are established and functional. This means that all the benefits of CommonStore for Lotus Domino can also apply to customer-specific and other Lotus Notes applications on the market today.

Part of a complete content management infrastructure

CommonStore for Lotus Domino is an element of the IBM Enterprise Content Management portfolio. With support for open standards and combined with any of the IBM repository choices—such as Content Manager, Content Manager OnDemand and Tivoli Storage Manager—this function-rich tool empowers you to manage the full spectrum of digital information generated in today's e-business world.

Used with other solutions in the family, CommonStore for Lotus Domino can be part of an information integration strategy that fosters widespread use of your enterprise content. A similar solution, Content Manager CommonStore for SAP, supports SAP® R/3® users. Additionally, those using Content Manager CommonStore for Lotus Domino and SAP can access their Lotus Notes and SAP archives from the SAP GUI desktop. Similarly, Content Manager CommonStore for Exchange Server provides an integrated electronic archiving solution for Microsoft Outlook 2000.

Find out more

For more information, contact your IBM representative or IBM Business Partner, or visit the IBM Content Manager CommonStore Web site at ibm.com/software/data/commonstore/lotus



© Copyright IBM Corporation 2002

IBM Corporation
Silicon Valley Laboratory
555 Bailey Avenue
San Jose, CA 95141
U.S.A.

Printed in the United States of America
05-02
All Rights Reserved

AIX, AS/400, the e-business logo, IBM, the IBM logo, iSeries, OS/2, OS/390, S/390 and Tivoli are trademarks or registered trademarks of International Business Machines Corporation in the United States, other countries or both.

Domino, iNotes and Lotus iNotes are trademarks and Lotus, Lotus Notes and Notes are registered trademarks of Lotus Development Corporation and/or IBM Corporation.

Linux is a registered trademark of Linus Torvalds.

Microsoft and Windows NT are registered trademarks of Microsoft Corporation in the United States, other countries or both.

R/3 and SAP are registered trademarks of SAP AG in the United States, other countries or both.

Other company, product or service names may be trademarks or service marks of others.

References in this publication to IBM products or services do not imply that IBM intends to make them available in all countries in which IBM operates.



Printed in the United States on recycled paper containing 10% recovered post-consumer fiber.



GC27-1683-00