

IBM Content Manager CommonStore for Exchange Server, Version 8

Highlights

- **Keeps important Microsoft Exchange e-mail messages and associated attachments at hand—while minimizing file storage requirements**
- **Supports collaboration through Exchange Public Folder archives**
- **Creates flexible message storage policies through user-initiated or automatic rule-driven archival capabilities**
- **Helps you comply with legal and corporate requirements for secure long-term information retention.**



With Content Manager CommonStore for Exchange Server, laborious searches for information and overloaded e-mail inboxes become frustrations of the past.

Electronic collaboration bridges gaps of space and time

With business increasingly transacted around the clock and in multiple locations, corporate e-mail traffic is getting heavier every year.

As efficient as e-mail is, however, it is also creating new challenges. The more business-critical information employees keep in their e-mail folders, the more time they must spend searching for a particular message or attached document. IT administrators, in turn, face constant demands for more disk space and associated overhead for backing up e-mail servers. In response, some companies set arbitrary storage limits, but such limits may result in the loss of valuable information or excessive file duplication to prevent such loss.

IBM Content Manager CommonStore for Exchange Server, Version 8 solves these problems, providing an integrated, electronic archiving solution for Microsoft Outlook, a popular enterprise e-mail system. CommonStore for Exchange Server seamlessly integrates with Microsoft Exchange 2000 servers. Administrators can then offload messages and attachments from the server to one of the powerful IBM archive solutions available.

Once messages are archived, users can continue to easily and securely retrieve their e-mails and attachments directly from the Microsoft Outlook client. Locating pertinent details about past business transactions or answers to customers' questions requires only a few keystrokes. And because the latest version provides enhanced support for collaboration, team members can create valuable knowledge repositories by pooling their expertise.

Reining in runaway e-mail stores

Without archiving, the volume of e-mails and attachments on your Exchange Server would become unmanageable. To keep within electronic storage limits, users would be forced to save messages to Outlook personal folders, store the attachments separately on a local disk, print and file paper copies of messages, or delete potentially useful business information.

More efficient use of your precious storage space

To meet growing storage requirements, you would need to continually buy new hard disks, racks and servers. Plus, with a continually expanding Exchange Server, you would face extended service intervals for backup and recovery, increased replication time and greater efforts for system administration and maintenance.



Because Content Manager CommonStore for Exchange Server integrates seamlessly with Microsoft Outlook desktop applications, users can be productive on the archive system with minimal training.

CommonStore for Exchange Server archives e-mail and associated attachments externally for secure, long-term storage. The archival capability is transparent to the end user. Archived messages can be opened and forwarded for viewing just like ordinary e-mails, and their associated attachments can be called up through links embedded in the message, just as you would with any other Microsoft Outlook message.

The latest release of CommonStore for Exchange Server also lets users archive interactively and makes it possible to archive useful collections of shared information from Exchange Public Folders. Without such a tool,

much-used Public Folders can become unmanageably large and difficult to search. Systems administrators also benefit from archiving with CommonStore. It decreases the size of the Exchange mailbox stores, which reduces database backup and restore times and the associated maintenance costs and efforts.

Adhering to records retention rules

Relying on e-mails and electronic attachments means freedom from paper. This, however, doesn't translate into freedom from accountability. In today's business climate of increased audit scrutiny, electronic records have become just as important as paper trails. For example, the U.S. Securities and Exchange Commission requires brokers and dealers to retain copies of all customer e-mail on nonchangeable media for specific periods of time.

CommonStore for Exchange Server can help businesses adhere to this and other legal requirements, without worrying about the burden of long-term storage on their e-mail servers. Automated archiving policies copy required documents into the appropriate repositories, cutting down on your administrative needs.

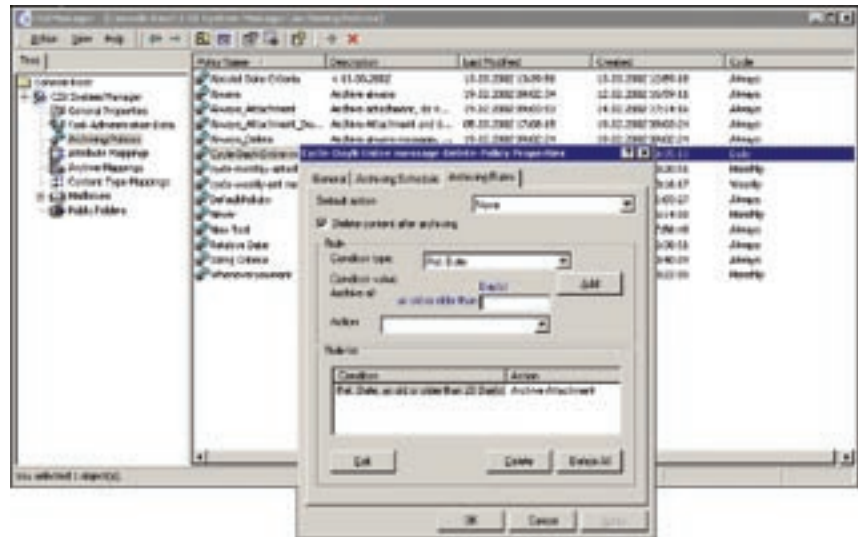
Fast, flexible data storage and retrieval

CommonStore for Exchange Server gives you the upper hand in managing storage costs, as well as providing:

- Expanded storage capacity, with the potential for millions of messages and attachments to be stored on inexpensive media such as optical disk jukeboxes and tape libraries
- Centralized archive storage and archival administration on a choice of robust, scalable and secure platforms
- Rapid retrieval of messages or individual attachments, which saves time and money when responding to inquiries or audits
- New support of client-driven archiving, giving system administrators more flexibility to let end users manage their e-mail.

Part of a complete content management infrastructure

CommonStore for Exchange Server is part of the IBM Enterprise Content Management portfolio. With support for open standards and combined with any of the IBM repositories—IBM Content Manager, IBM Content Manager OnDemand or IBM Tivoli® Storage Manager—this function-rich tool empowers you to manage the full spectrum of digital information generated in today's e-business



E-mails and attached documents can be archived and retrieved within seconds using Content Manager CommonStore for Exchange Server.

world. Used with other offerings in the Content Manager portfolio, CommonStore for Exchange Server can be part of an information integration strategy that fosters smart usage of your enterprisewide content.

The many Microsoft Exchange customers who are also SAP users will find that CommonStore for Exchange Server has an ideal partner within the Content Manager portfolio, Content Manager CommonStore for SAP. A complementary solution for electronically archiving, managing and distributing SAP data and documents, Content Manager CommonStore for SAP makes business documents, such as inventory levels or purchase orders, available within seconds to users anywhere on your network. A similar solution, Content Manager CommonStore for Lotus® Domino™, supports Lotus Domino users.

By combining the advantages of the Microsoft Outlook client with electronic archiving and other resources from the Content Manager portfolio, you can better manage your Microsoft Exchange Server environment. CommonStore for Exchange enables you to leverage the valuable information contained in your organization's messages and attachments, so you can conduct electronic business efficiently.

For more information

Please contact your IBM marketing representative or an IBM Business Partner, or call 1-800 IBM CALL within the U.S. Also, visit our Web site at **ibm.com/software/data/commonstore/exchange**



© Copyright IBM Corporation 2002

IBM Corporation
Silicon Valley Laboratory
555 Bailey Avenue
San Jose, CA 95141
U.S.A.

Printed in the United States of America
05-02
All Rights Reserved

The e-business logo, IBM, the IBM logo and Tivoli are trademarks or registered trademarks of International Business Machines Corporation in the United States, other countries or both.

Domino is a trademark and Lotus is a registered trademark of Lotus Development Corporation and/or IBM Corporation.

Microsoft is a registered trademark of Microsoft Corporation in the United States, other countries or both.

Other company, product or service names may be trademarks or service marks of others.

References in this publication to IBM products or services do not imply that IBM intends to make them available in all countries in which IBM operates.



Printed in the United States on recycled paper containing 10% recovered post-consumer fiber.

