



What's New and Next with IBM Rational Team Concert

Ron de Jong
Rational Software Group Services
ron.de.jong@nl.ibm.com

IBM Software

Innovate2012

The Premier Event for Software and Systems Innovation

Next  NOW!



Please note

IBM's statements regarding its plans, directions, and intent are subject to change or withdrawal without notice at IBM's sole discretion.

Information regarding potential future products is intended to outline our general product direction and it should not be relied on in making a purchasing decision.

The information mentioned regarding potential future products is not a commitment, promise, or legal obligation to deliver any material, code or functionality. Information about potential future products may not be incorporated into any contract. The development, release, and timing of any future features or functionality described for our products remains at our sole discretion.

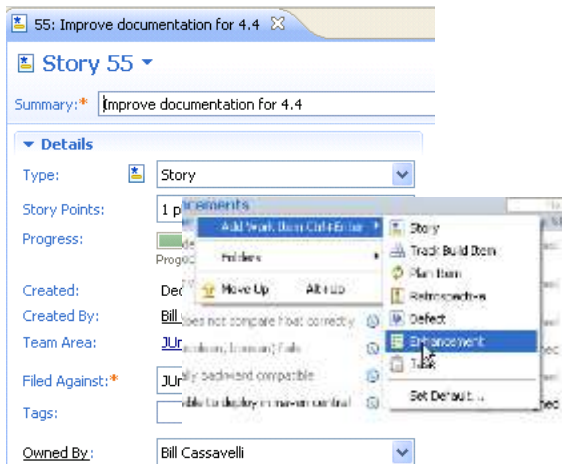
Performance is based on measurements and projections using standard IBM benchmarks in a controlled environment. The actual throughput or performance that any user will experience will vary depending upon many factors, including considerations such as the amount of multiprogramming in the user's job stream, the I/O configuration, the storage configuration, and the workload processed. Therefore, no assurance can be given that an individual user will achieve results similar to those stated here.

Agenda

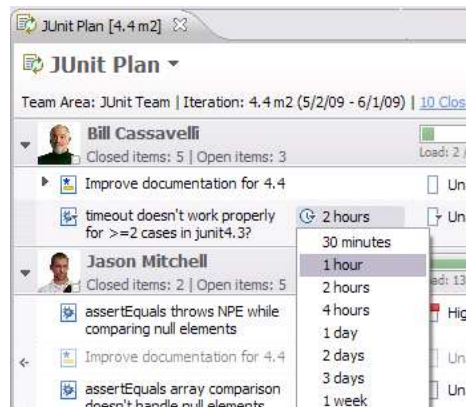
- What is Rational Team Concert?
- What's New in Rational Team Concert 4.0?
- Questions

Rational Team Concert – A single tool, many capabilities

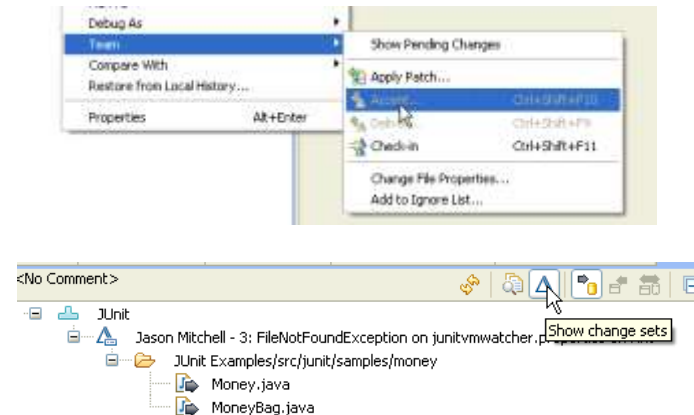
Work Items



Planning



Source Control



Builds – Continuous Integration



Dashboards & Reporting



Method Enforcement and Automation

Problem
A work item must be associated with the change set or a comment must be set.

Reason
All change sets should be associated with a work item which is planned for t

Deliver (Failed)

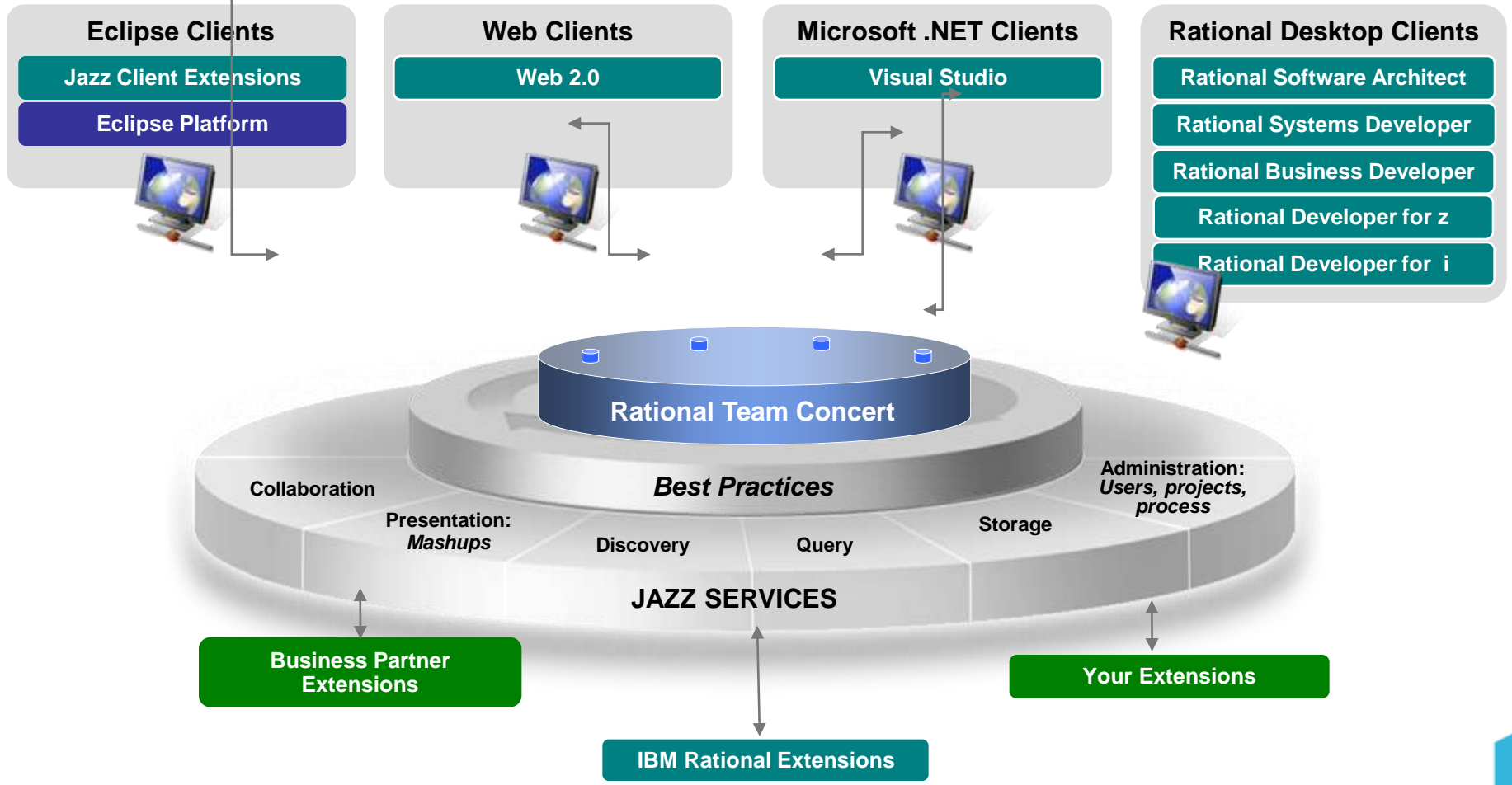
This makes it e through the it why your chan

Solutions

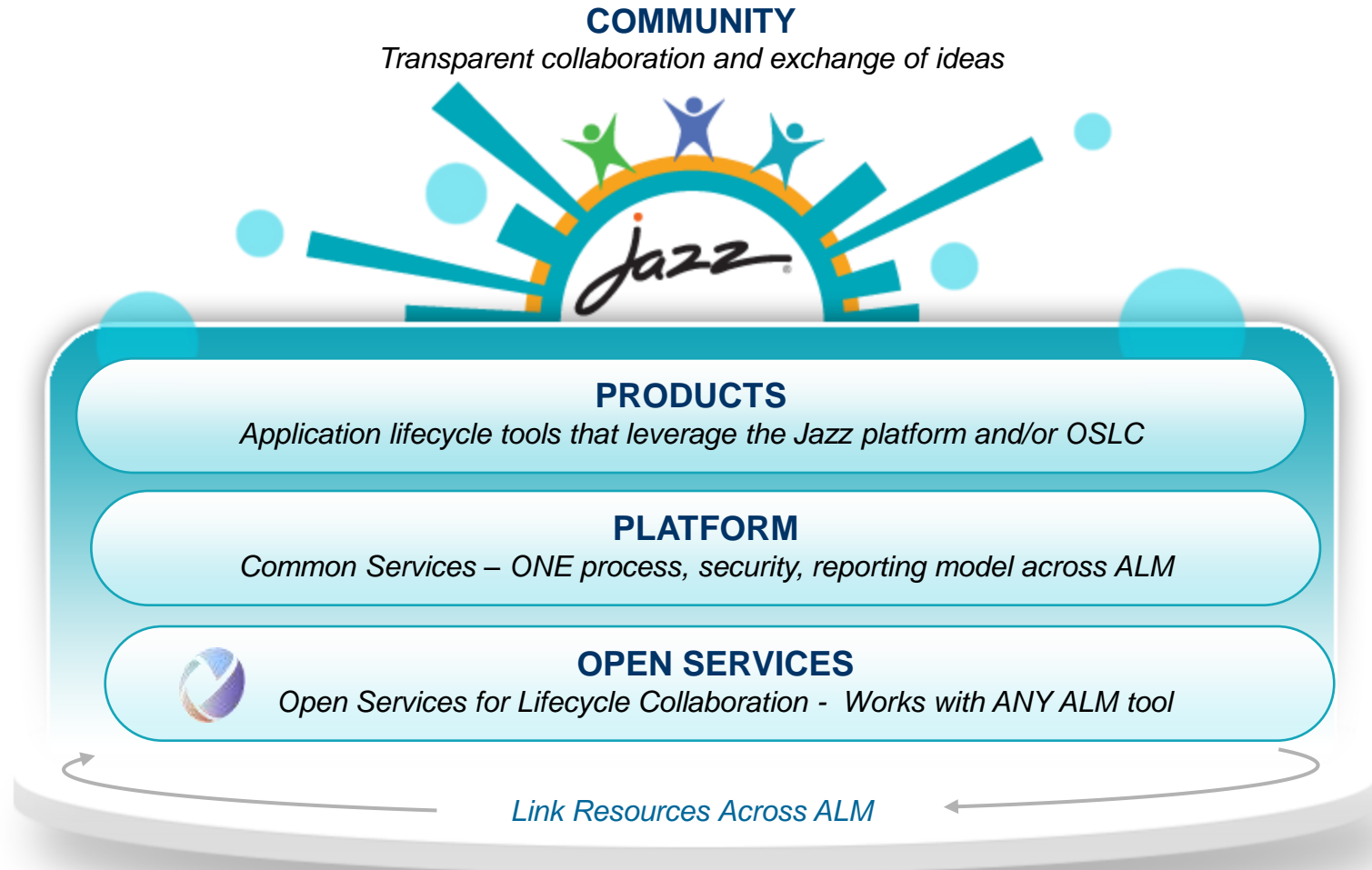
- Associate Existing Work Item
- Associate New Work Item
- Associate and Try Again (experimental)
- Override 'Descriptive Change Sets' Precondition

Rational Team Concert: Built on an open, Web 2.0 platform

Supporting a broad range of desktop clients, IDE's and languages



Our ALM is unique – a PLATFORM that can integrate with any tool



Open Services for Lifecycle Collaboration (OSLC)

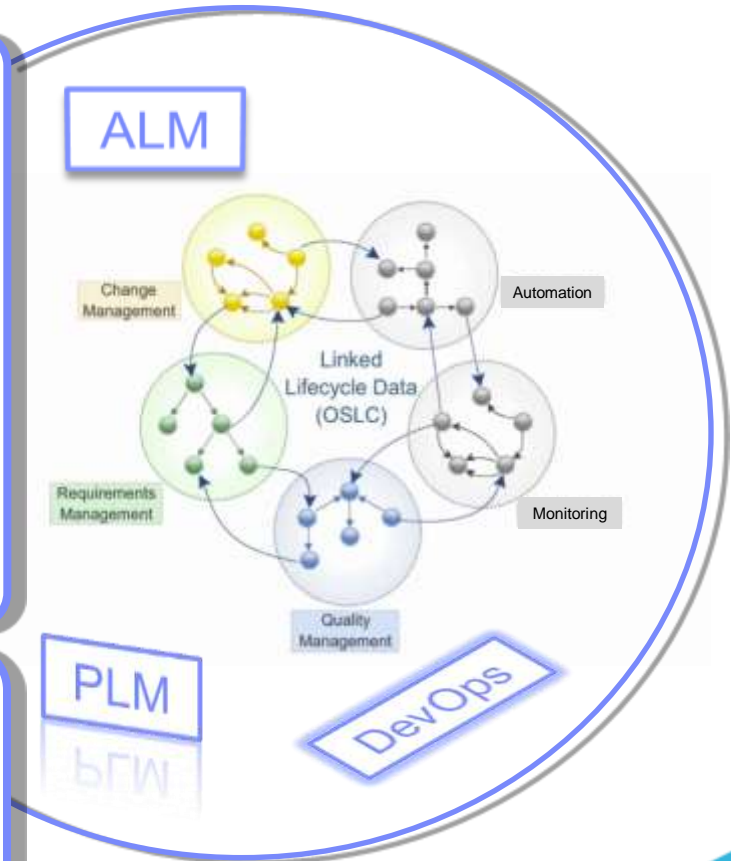
Working to improve the way software lifecycle tools share data



Open Services for Lifecycle Collaboration

Lifecycle integration inspired by the web

- Community driven and governed
 - 400+ registered community members
 - Workgroup members from 34+ [organizations](#)
- Wide range of interests, expertise, & [participation](#)
- Open specifications for numerous disciplines
- Defined by scenarios – solution oriented
- Implementations from IBM, BPs, and Others
- Based on [W3C](#) Linked Data



Inspired by the web
Proven



Free to use and share
Open



Changing the industry
Innovative

open-services.net

GET INVOLVED AND CONTRIBUTE!

Next NOW!

Platform, Shmatform - What's in it for me as a developer?

Developer Empowerment

Communication is friction free with RTC

As a Developer...

Everything I need to do my job is in one place

All my code, my tasks, my builds, my to do lists

I know what's going on

Work items track everything -- change sets, builds, and approvals

I know where we are and I know the impact of a change to the plan. I am empowered.

Everyone else knows what's going on

People stop asking me questions they can answer themselves now.

When can I test your fix? What's your status? When will you be done? Did the plan change?

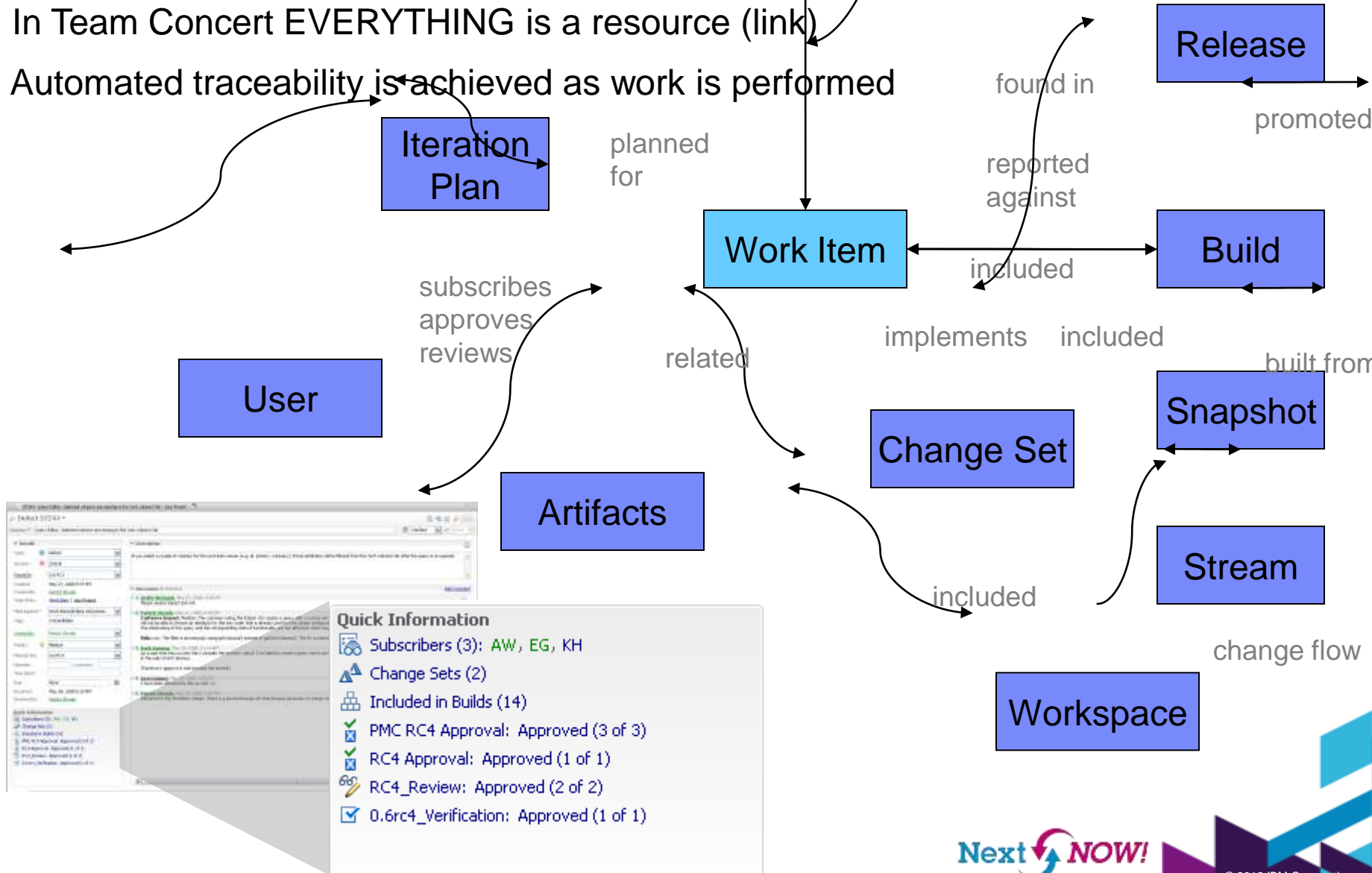
I can be a hero

Fix goofs, juggles tasks, patch in seconds, easily add or remove features.

I can figure out and fix my mistakes AND the "other guys" mistakes...

What's different about Rational Team Concert?

- In Team Concert EVERYTHING is a resource (link)
- Automated traceability is achieved as work is performed

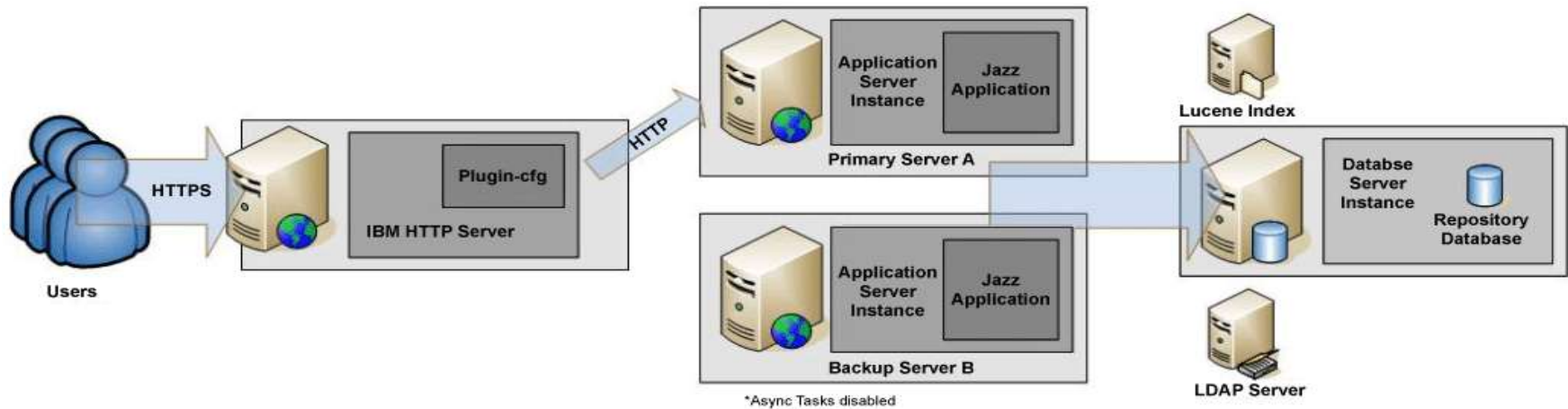


Agenda

- What's New in Rational Team Concert 4.0?

High-Availability Before CLM 4.0

- Manual Fail-over for CLM applications (hot standby, cold standby)
- Can independently use clustering for caching proxies or database servers.



http://publib.boulder.ibm.com/infocenter/clmhelp/v3r0m1/index.jsp?topic=/com.ibm.jazz.install.doc/topics/t_setting_up_ha.html

CLM 2012 - Clustering for High Availability

2011

2012

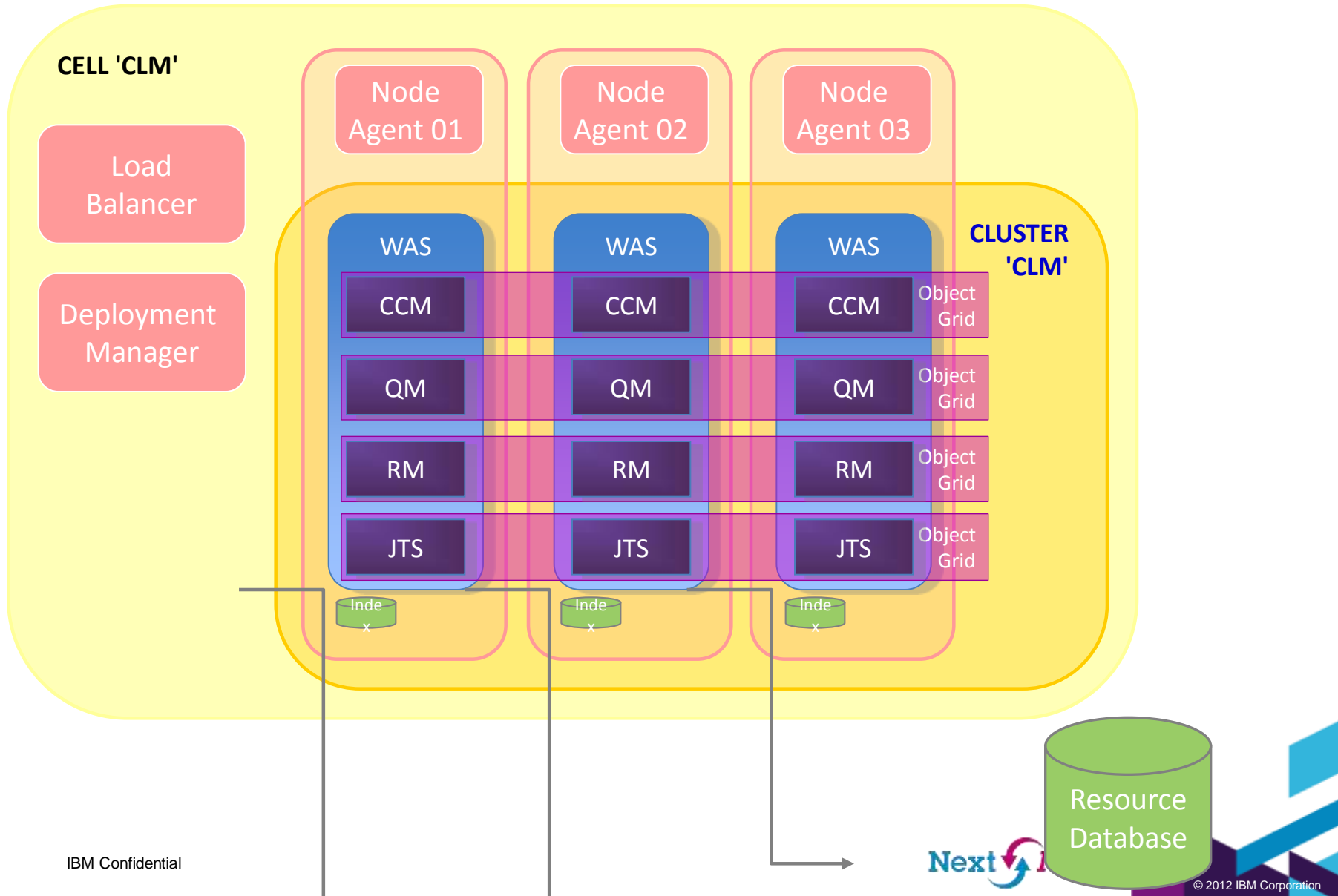
2013

- CLM High Availability / Clustering on WAS
 - Redundant application/JTS instances sharing central DB
 - Front load balancer dispatching, provides automatic failover across the cluster
 - WAS supported cluster solution is WAS ND:
 - Deployment management
 - Workload management
 - Session failover
 - WebSphere eXtreme Scale is the technology Jazz uses for a shared look-aside cache – Object Grid – This is bundled for use with CLM 2012 applications.

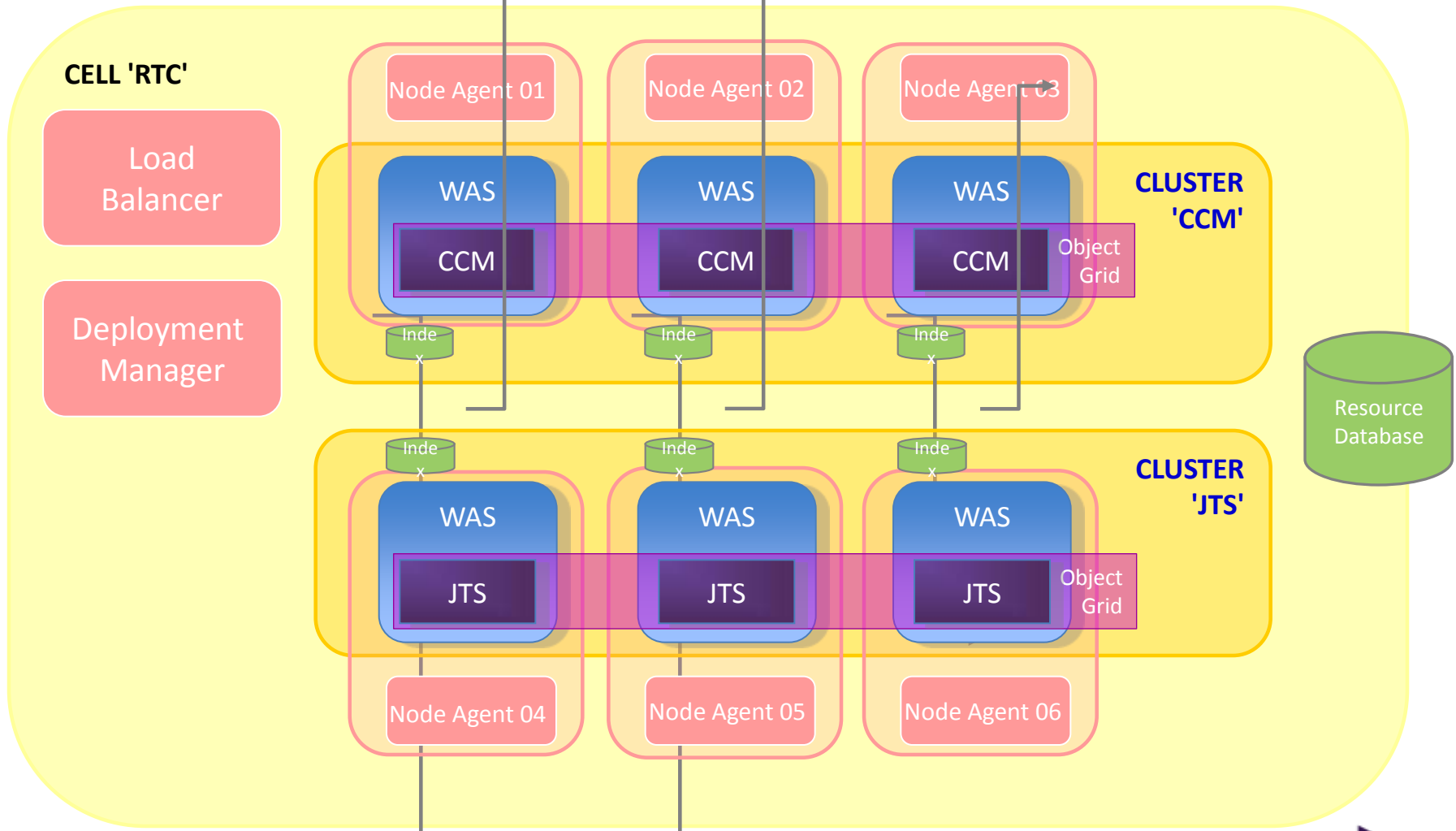


Prerequisite: Will require licensed WAS-ND (which is not bundled with CLM 2012) Also will require a freely available feature key to activate capability

Clustered CLM 4.0 in WAS ND – “all-in-one” topology



Clustered RTC 4.0 in WAS ND – “distributed” topology



CLM 2012 - I can upgrade in stages, rename a pilot/test server and share process across RTC repositories

2011

2012

2013

- Support rolling upgrade capability for CLM
 - I can upgrade one project at a time
 - Upgrade my Jazz Team Server to 4.0 and support both RTC 3.0.1 and RTC 4.0 clients
 - I can upgrade one CLM application at a time
 - Allow RTC, RQM, RRC to upgrade incrementally

- Support Server URL Rename
 - Support server URL rename initial use case
 - Production to Staging.
 - Pilot to Production* (specific rqts)

- Cross Repository Process Inheritance
 - I can share a project's process template across multiple JTS servers
 - Today this sharing can only occur in RTC 3.x on the same RTC/JTS repository



RTC 4.0 - Now I can track what's going on across projects



2011

2012

2013

Planning Across Projects

- Master Plan tracks cross cutting tasks
- See a schedule roll-up of tasks

Sep 5, 2011 9:00:00 AM - Sep 5, 2011 11:00:00 AM
 Using the Start and End Date of Snapshot 'Planned 1'
 Open Schedule...

RTC 4.0 - Are we optimizing the flow of work?



2011

2012

2013

▪ New Kanban Taskboard

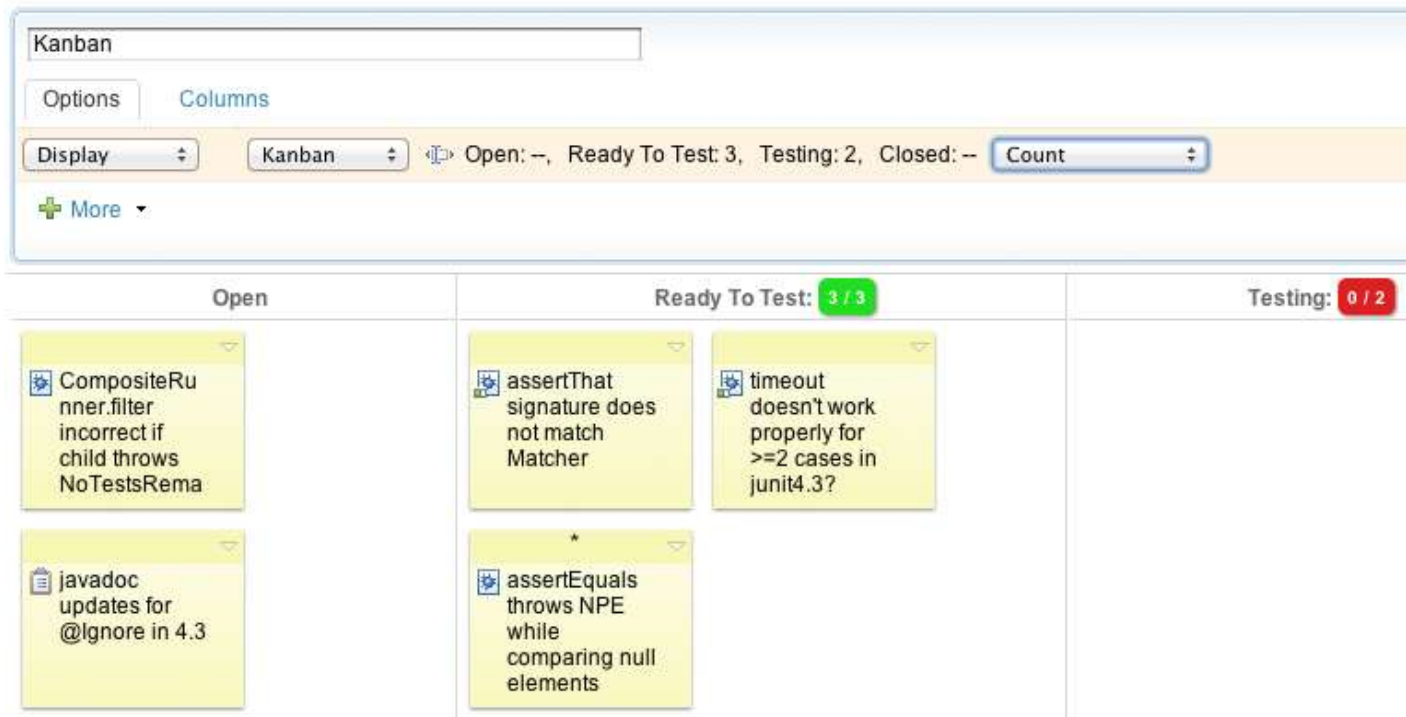
- Where is capacity available?
- Am I exceeding my desired limits? Customize limits to reflect ideal state.

The screenshot shows a Kanban board with the following structure:

- Header:** "Kanban" title, "Options" and "Columns" tabs, "Display" dropdown, "Kanban" view selector, and a summary bar: "Open: --, Ready To Test: 3, Testing: 2, Closed: --" with a "Count" dropdown.
- Columns:**
 - Open:** Contains two task cards:
 - CompositeRunner.filter incorrect if child throws NoTestsRema
 - javadoc updates for @Ignore in 4.3
 - Ready To Test: 3 / 3:** Contains two task cards:
 - assertThat signature does not match Matcher
 - assertEquals throws NPE while comparing null elements
 - Testing: 0 / 2:** Contains one task card:
 - timeout doesn't work properly for >=2 cases in junit4.3?

What are the benefits of Kanban?

- **Allow teams to set “work in process” limits and visualize the flow of work**
 - Where is capacity available? Am I exceeding my desired limits?
- **Helps to optimize the ideal flow of work through the system using a “pull” model**
 - For example: “Idle” resources creates inefficiency, we might encourage testing to focus their efforts to address the work backlog in the “ready to test” state below.



RTC 4.0 – Improved MS-Project Import, Re-Import, and Export



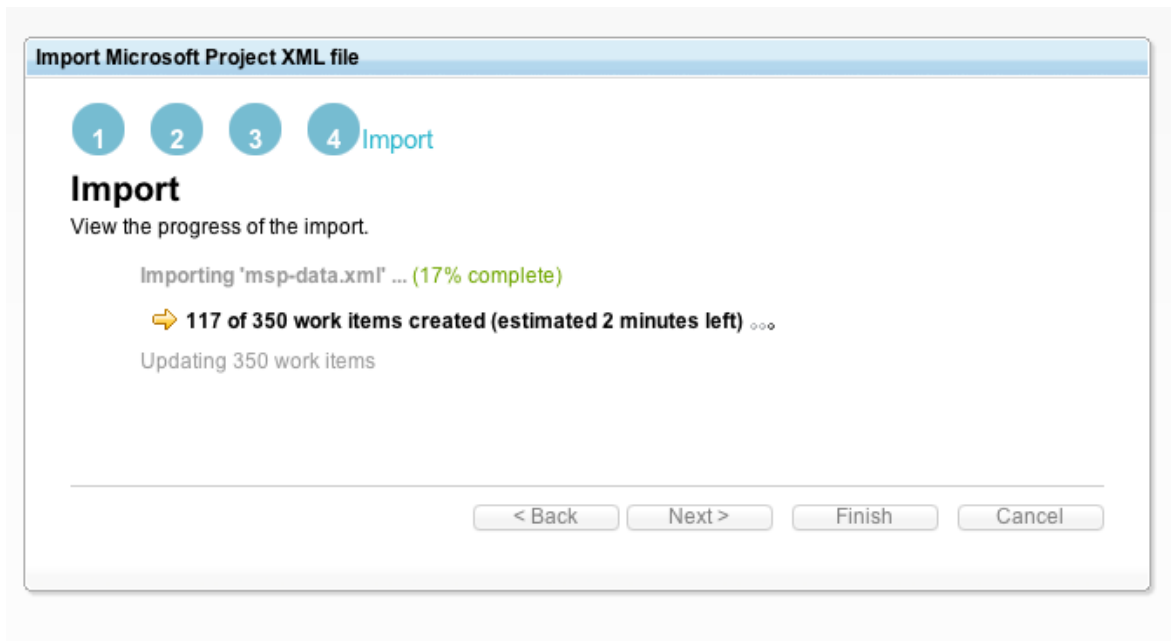
2011

2012

2013

▪ New or Improved Use Cases

- Import large files and let me know the progress
- Re-import and update only the new tasks
- Export RTC Status back to a clean MS-Project Plan



RTC 4.0 – I can manage WI access control across projects, team areas and users to better support contract teams and suppliers



2011

2012

2013

Flexible read access control for Work Items

- Access groups define the scope.
- An access group is a collection of project areas, team areas, and users. They have a name and description and can be shared at various levels (the entire repo, a project area, a team area, etc.)
- For example: You could make a work item visible to “These two team areas and these two other users” by creating an access group which included two team areas and two contributors.

✕

Create an Access Group

Configure the details of the access group.

Name: *

Description:

Members: * 👤 ⚙️ ✕

- Business Recovery Matters
- Curtis
- Deb
- Marco
- Tanuj
- Ursula

RTC 4.0 - I can get user input on queries, I can pull in external data



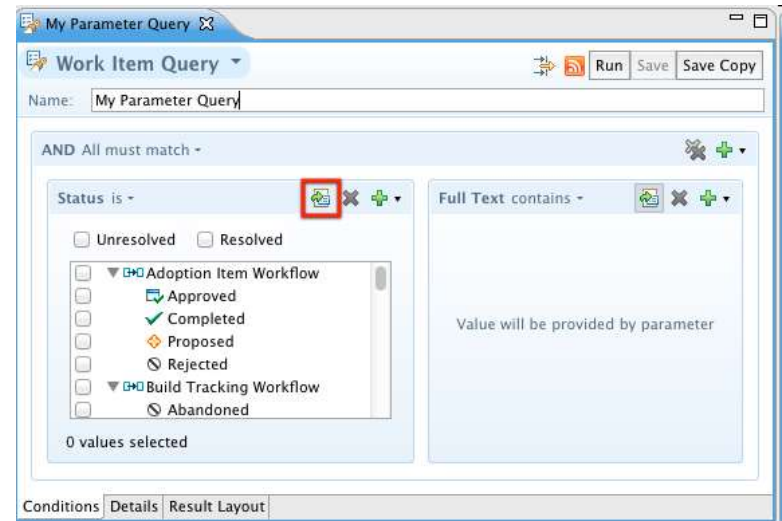
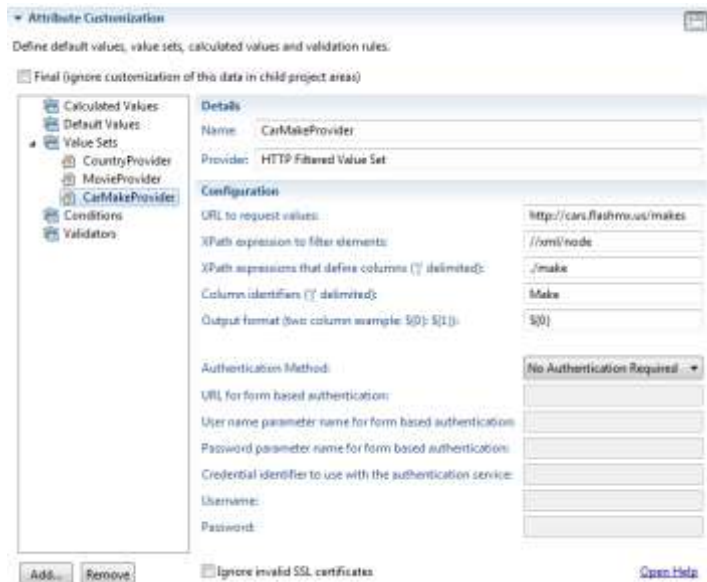
2011

2012

2013

More Work Item Enhancements

- Variables in Work Item Queries
- External Data Set Providers (HTTP)



“Now I don’t have to manage lots of queries just to get variable input”

“I want to fetch attribute values from an external data source, such as a HTTP REST service so I can always have the most up to date data”

RTC 4.0 – I can control SCM permissions at the file/folder level, control how files get loaded and locate changes across streams.



2011

2012

2013

Advanced SCM

- Deletion and Artifact Level Read Permissions
 - Provide **read permissions** at the versioned artifact granularity in SCM
 - Permanently **delete files** (Administrators only)
- More Flexible Workspace and Load Management:
 - Check-in History to **easily revert** to any checked-in version
 - Save and Re-load load rules from files
- **Variant Management:**
 - Where have my changes flown? (Locate Change Sets Editor)



Check-in History	Type	Date
	Final - Deleted	18-Oct-2011 12:36 PM
	Modified	18-Oct-2011 12:36 PM
	Proposed	18-Oct-2011 12:36 PM
	Modified	18-Oct-2011 12:36 PM
	Undo	18-Oct-2011 12:36 PM
	Modified	18-Oct-2011 12:36 PM
	Modified	18-Oct-2011 12:36 PM
	Initial	18-Oct-2011 12:36 PM

Check-in in local changes

The previous version of each of these files have had its content permanently removed. The changes you are checking in may contain content that should not be checked in. Do you want to continue?

Buttons: Check-in, Skip and continue, Cancel, << Details

Path: /home/tmok/Workspaces/runtime-jazz_configuration-remote -> /wiki.conflict.sw.modmod

RTC 4.0 – I can version anything easily outside the IDE, integrate my existing build engine or tool and use the CLI for more scripting

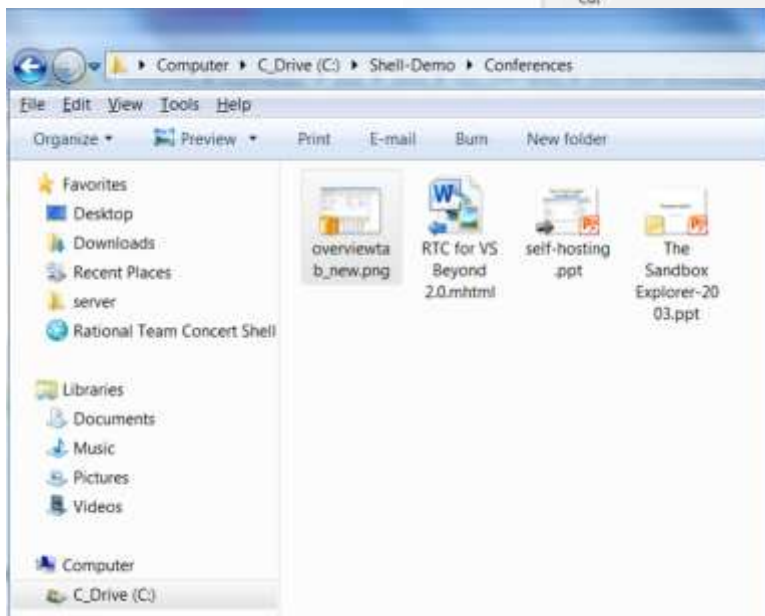
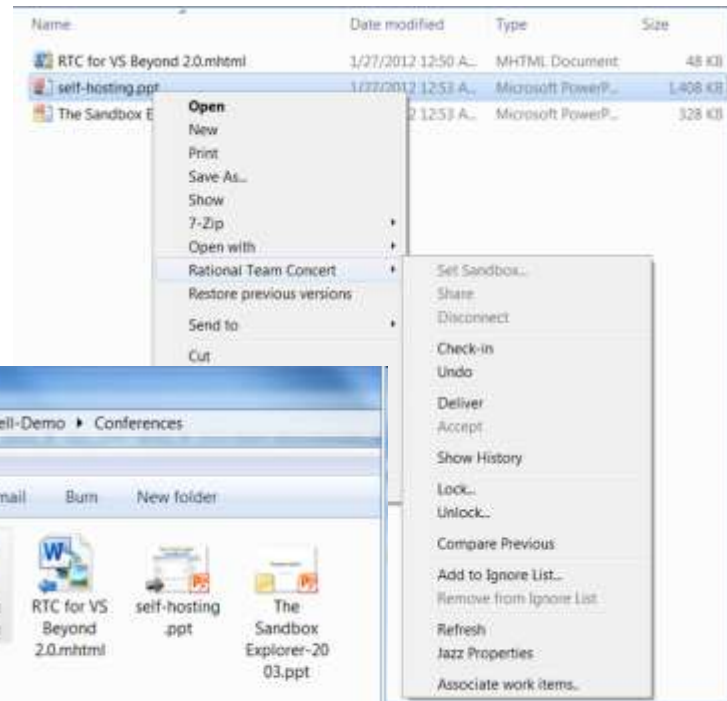


2011

2012

2013

- **Simple SCM UI**
 - Windows 7 **Explorer SCM integration**
- **Built-In Hudson/Jenkins Build Integration**
 - View build health and control builds from RTC
- **MSCCI Support – Basic versioning API**
 - Tested with Rhapsody and Matlab
- **CLI Scripting and New Commands**
 - Improved SCM command line scripting
 - Many new SCM CLI commands



Hudson



Jenkins



RTC 4.0 – IBM Enterprise Platform – Build, promote and deploy on z/i

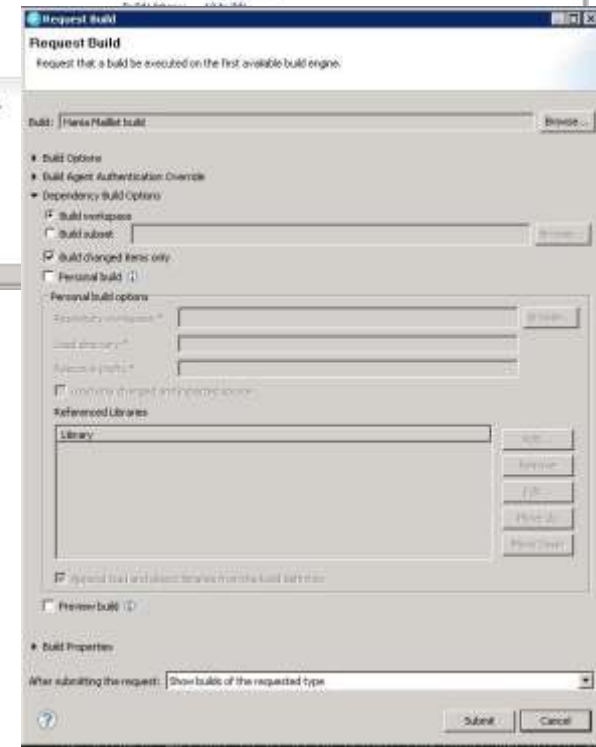
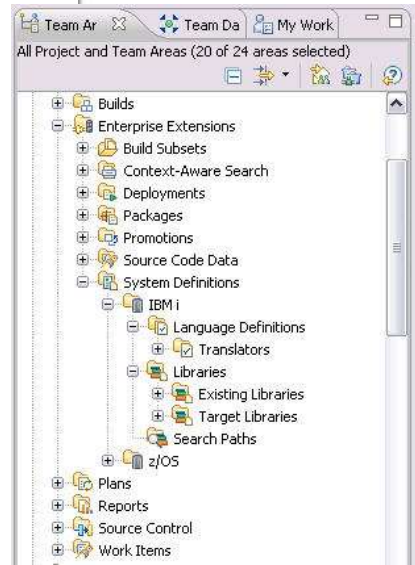


■ Dependency build enhancements

- Build preview
- Load with dependencies
- Build subsets populated by Work Items
- Post build report

■ Enhanced support for IBMi

- Full Dependency build with link support
- Work Item based promotion and Deployment



New Jazz.net: I can find answers quicker, and rate answers by others

- We've re-designed it to appeal to a developer audience and provide more community value
 - New forums with user ratings and with the “answer” identified
 - RTC takes a more front and center role – developer focus

Jazz Forum
It's all about the answers!

Questions | Tags | Users | Badges | **Ask a question**

Active | Newest | Most voted | Unanswered | Unresolved

Search the forum
 questions tags users

Welcome to the Jazz forum
 Ask and answer questions about Jazz.
 24735 questions
 50619 answers

Help using the forum
 Here's how to get started quickly.
[About the forum](#)
[Frequently asked questions](#)

Related tags
 rational-team-concert 15,394

Question	Answers	Votes	Views
How do I use Jira with RTC? Seth Packham (423) yesterday rational-team-concert jira rational-build-forge installation	1	1	5
What colors are in the carpet at the Littleton facility? Seth Packham (423) yesterday littleton	1	0	8
Can I get some reputation points? eliane tozman (1) 01 May, 08:33 good-idea	0	0	12
What are the best features of this new forum? Karen Giaciminski (166) 27 Apr, 13:43 jazz.net	2	2	34

Summary

- **CLM 2012:**
 - *Clustering for HA, Incremental Upgrades, Faster Upgrades*
- **Planning:**
 - *Plan across projects; Support Kanban; Improved MS-Project Import/Export*
- **Work Items:**
 - *User input on queries, manage external data, more flexible access control*
- **SCM:**
 - *Improved variant management - locate change sets across release streams*
 - *Flexible workspace layout and control – load rules from files*
 - *Version anything outside the IDE – Windows Shell SCM integration*
 - *Improved CLI ; more CLI commands and enhanced scripting*
 - *Integrate SCM better with MSCCI tools*
- **Build:**
 - *Out of the box support for Jenkins and Hudson*
 - *Improved build, promote and deploy for system Z and IBM I*
- **Jazz.net - find answers faster, more developer focus and value**

QUESTIONS

www.ibm.com/software/rational

Acknowledgements and disclaimers

Availability: References in this presentation to IBM products, programs, or services do not imply that they will be available in all countries in which IBM operates.

The workshops, sessions and materials have been prepared by IBM or the session speakers and reflect their own views. They are provided for informational purposes only, and are neither intended to, nor shall have the effect of being, legal or other guidance or advice to any participant. While efforts were made to verify the completeness and accuracy of the information contained in this presentation, it is provided AS-IS without warranty of any kind, express or implied. IBM shall not be responsible for any damages arising out of the use of, or otherwise related to, this presentation or any other materials. Nothing contained in this presentation is intended to, nor shall have the effect of, creating any warranties or representations from IBM or its suppliers or licensors, or altering the terms and conditions of the applicable license agreement governing the use of IBM software.

All customer examples described are presented as illustrations of how those customers have used IBM products and the results they may have achieved. Actual environmental costs and performance characteristics may vary by customer. Nothing contained in these materials is intended to, nor shall have the effect of, stating or implying that any activities undertaken by you will result in any specific sales, revenue growth or other results.

© **Copyright IBM Corporation 2012. All rights reserved.**

– **U.S. Government Users Restricted Rights - Use, duplication or disclosure restricted by GSA ADP Schedule Contract with IBM Corp.**

IBM, the IBM logo, ibm.com, Rational, the Rational logo, Telelogic, the Telelogic logo, Green Hat, the Green Hat logo, and other IBM products and services are trademarks or registered trademarks of International Business Machines Corporation in the United States, other countries, or both. If these and other IBM trademarked terms are marked on their first occurrence in this information with a trademark symbol (® or ™), these symbols indicate U.S. registered or common law trademarks owned by IBM at the time this information was published. Such trademarks may also be registered or common law trademarks in other countries. A current list of IBM trademarks is available on the Web at “Copyright and trademark information” at www.ibm.com/legal/copytrade.shtml

Windows is a trademark of Microsoft Corporation. Other company, product, or service names may be trademarks or service marks of others.



www.ibm.com/software/rational

© Copyright IBM Corporation 2012. All rights reserved. The information contained in these materials is provided for informational purposes only, and is provided AS IS without warranty of any kind, express or implied. IBM shall not be responsible for any damages arising out of the use of, or otherwise related to, these materials. Nothing contained in these materials is intended to, nor shall have the effect of, creating any warranties or representations from IBM or its suppliers or licensors, or altering the terms and conditions of the applicable license agreement governing the use of IBM software. References in these materials to IBM products, programs, or services do not imply that they will be available in all countries in which IBM operates. Product release dates and/or capabilities referenced in these materials may change at any time at IBM's sole discretion based on market opportunities or other factors, and are not intended to be a commitment to future product or feature availability in any way. IBM, the IBM logo, Rational, the Rational logo, Telelogic, the Telelogic logo, and other IBM products and services are trademarks of the International Business Machines Corporation, in the United States, other countries or both. Other company, product, or service names may be trademarks or service marks of others.