

IBM WebSphere Studio Site Developer Version 5.1.2

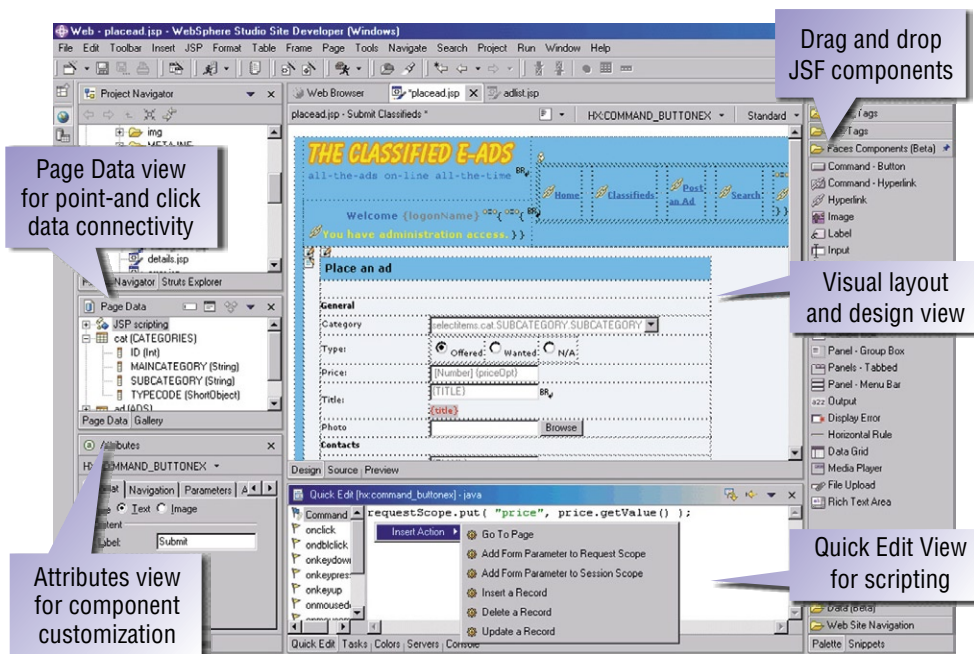
Highlights

- **Accelerate the development of dynamic Web, Java® and Web services applications using RAD tools and wizards**
- **Integrate your business applications with interoperable Web services**
- **Streamline application testing with quick loading unit test environment and visual debugger**
- **Leverage existing skills and shorten the learning curve for Web development with drag-and-drop UI components and point-and-click database connectivity**
- **Adapt and extend the development environment with a wide range of IBM, IBM Business Partner and Eclipse-based plug-ins**

Build and maintain dynamic e-business applications

IBM WebSphere® Studio Site Developer is the on-ramp to the IBM WebSphere Studio development experience. It provides an easy-to-use, integrated development environment for visually constructing, testing and deploying dynamic Web applications, Web services and Java applications. WebSphere Studio Site Developer simplifies Java® development with high productivity RAD tools, templates and wizards.

Built on Eclipse, an open, industry-supported platform for development tools, WebSphere Studio Site Developer enables you to adapt and extend your development environment with best-of-breed plug-in tools from IBM, IBM Business Partners and the Eclipse community to match your needs and to maximize developer productivity.



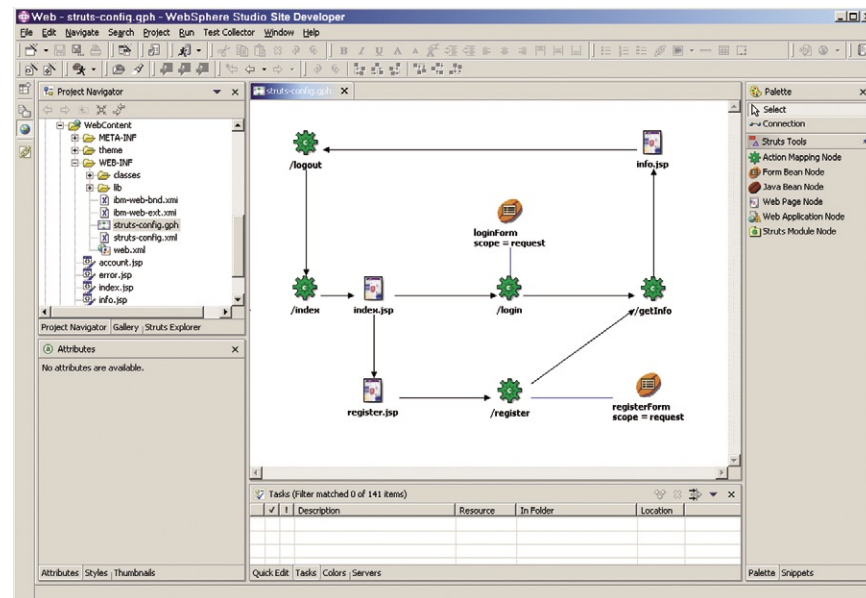
Use the Page Designer to visually layout and design Web pages. Drag and drop re-usable JavaServer Faces UI components to rapidly build rich user interfaces. Point and click to connect the UI to data sources, including relational databases and Web services.

Simplify Web development and Web site management

Easy-to-use wizards and tools bring virtually all aspects of Web development (HTML, JSP and servlets) into a common interface and enable developers with diverse technical backgrounds, and even those unfamiliar with Java, to build rich, data-driven applications.

- Simplify application development with Struts tools to visually map and construct Web applications using Model-View-Controller design and the Struts 1.1 framework
- Quickly build rich Web user interfaces and Web forms with reusable, drag-and-drop JavaServer Faces components. JSF eliminates much of the routine hand-coding required for event handling, user input validation and data binding for Web applications
- Connect your Web applications to relational databases and Web services using simple point-and-click tools that support Service Data Objects, an emerging industry standard for accessing heterogeneous data
- Using 4GL skills, build and debug business logic and data-driven Web applications in Enterprise Generation Language (EGL), a high-level procedural language that generates to Java

- Build interactive Web user interfaces with the performance and maintenance characteristics of thin clients using Faces client components that extend the JSF specification
- Easily build rich-function Web pages in a visual or source editing mode using the advanced-function HTML and JSP editor
- Rapidly import an entire Web site, change styles and apply them globally, and visually add or delete pages from a tree-structure view using the Web Site Designer
- Create and animate original art with drag-and-drop ease using WebArt Designer and Animated GIF Designer components¹



Use the Web Diagram Editor to visually map and construct the structure of Web applications using the Struts open source framework. Layout Web pages, business logic and application data and draw connections to indicate how the application flow should proceed. Struts separates the business logic from the UI making applications easier to maintain.

Generate J2EE applications with EGL

EGL is a fourth generation language (4GL) environment that enables procedural developers to rapidly develop and debug data-driven Web applications and business logic using familiar programming constructs and without coding in Java. EGL incorporates constructs and functionality from Informix 4GL to make WebSphere Studio a perfect development environment for Informix developers. EGL is tightly integrated with WebSphere Studio, saving procedural developers significant time. EGL incorporates constructs and functionality from Informix 4GL to make WebSphere Studio a perfect development environment for Informix developers. You can “drag and drop”

records and data items defined in EGL onto a JSP automatically establishing the linkage between the JSP and the EGL data item.

Extend applications with Web services support

WebSphere Studio Site Developer provides the tools you need to discover, create, build, test, deploy and publish Web services. Build new Web services from scratch or enable existing applications for Web services to ease integration and reuse.

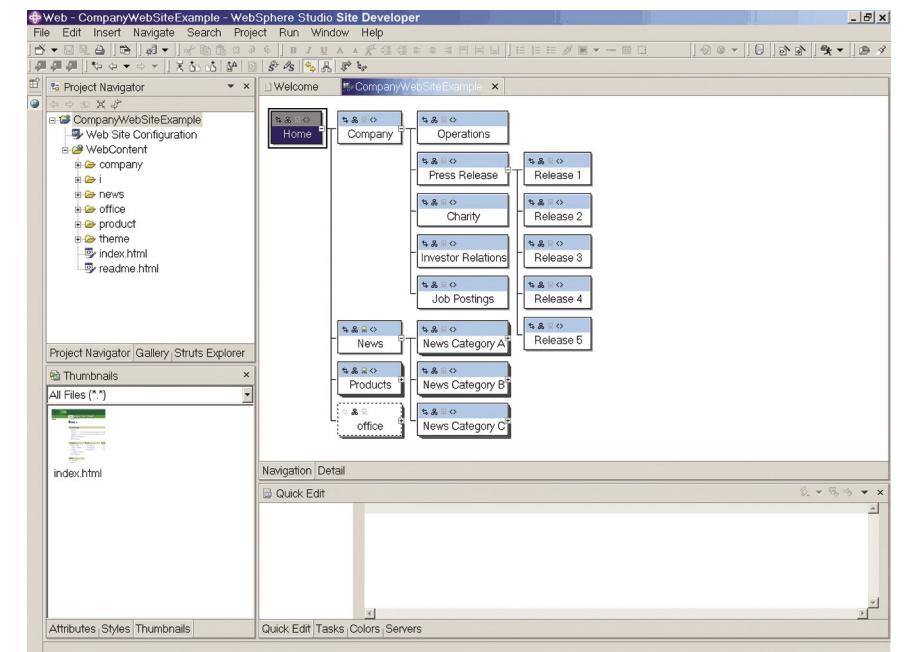
- Easily create, validate and detect interoperable Web services that are industry compliant and compatible with your partners using WS-I Basic Profile Version 1.0, the WSDL editor and enhanced Web services explorer
- Quickly generate WSDL and WSIL files to describe your Web services and prepare them for inspection
- Encode input and output messages with SOAP
- Create a Java proxy to interface with client applications
- Generate Web services test clients without coding
- Deploy to the UDDI, Version 2 registry

Simplify XML development

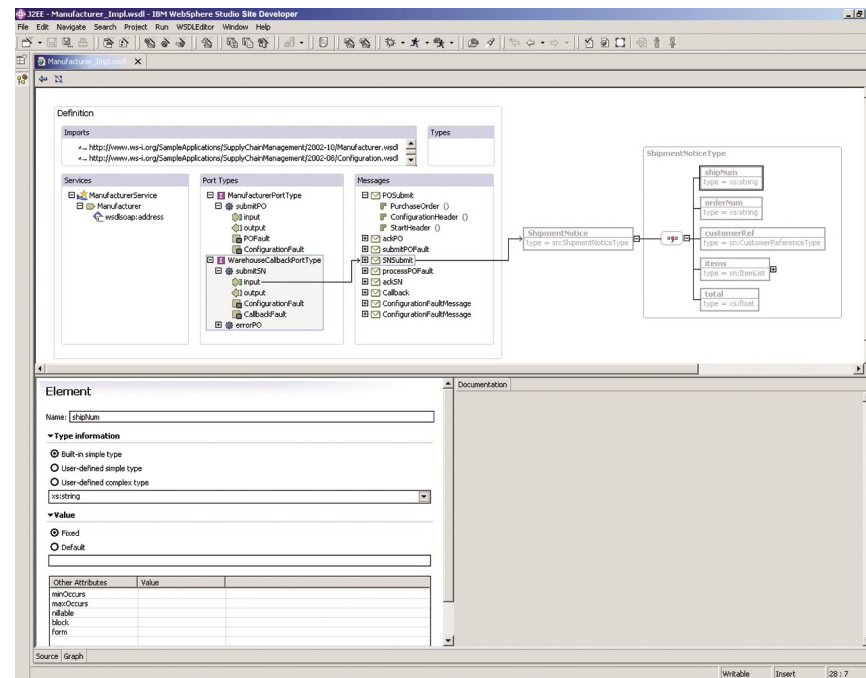
The comprehensive XML functions within WebSphere Studio Site Developer help you create, edit and transform XML documents.

- Create, view and validate document type definition (DTD) and XML schemas and create XML documents from DTDs
- Create and map XML files and define mappings between relational database (RDB) tables and DTD files

- Generate a document access definition (DAD) script – used by IBM DB2® XML Extender – to either compose XML documents from existing DB2 data or deconstruct XML documents into DB2 data
- Interpret Extensible Stylesheet Language (XSL) transformation scripts step-by-step using the Xalan processor, or create an HTML or XML document by applying an XSL stylesheet to an XML document



Use the Web Site Designer to create, import and manage entire Web sites. Create page templates to ensure your Web site follows a consistent design. The Navigation view shows your site pages as a hierarchy and makes it easy to add, delete or move pages. When your site structure changes, navigation links are automatically regenerated.



The WSDL Editor makes it simple to define ports and messages for your Web services.

Build database-driven applications

WebSphere Studio Site Developer provides integrated tools to create database-driven applications from queries and beans. The database connection wizard makes it easy to establish a Java Database Connectivity (JDBC™) connection to a database — like IBM DB2 Universal Database™, IBM Informix®, Oracle, Microsoft® SQL Server® or MySQL. The SQL query wizard and SQL query builder provide a visual interface for creating and executing SQL statements.

You can create a simple query using the SQL query wizard, or you can use the SQL query builder that supports a wider range of statements. A built-in SQL-to-XML wizard helps you create XML and XSL documents, DTD specifications and Extensible Stylesheet Definition (XSD) schemas, HTML files and related artifacts. SQL for Java (SQLJ) support enables you to rapidly create and debug applications using SQLJ and DB2 SQLJ Stored Procedures.

Extend Java technology-based programming capabilities

WebSphere Studio Site Developer gives professional developers robust Java technology application tools with Java Development Kit Version 1.4 support. With the Visual Editor for Java, you can create GUIs with drag and drop ease using either Abstract Window Toolkit (AWT), or Swing components. The Visual Editor for Java also allows you to see GUI design changes immediately with dynamic updates between source code and visual design.

Streamline application testing

A quick-loading unit test environment and visual debugger provide an environment to rapidly test and debug local and server-side code on WebSphere Application Server, WebSphere Application Server - Express and Apache Tomcat.

- Create and configure server instances using the built-in wizards or WebSphere Studio can create them automatically
- Step through applications and set breakpoints
- Test client-side JavaScript and Active Script using Active Script Debugger
- Create, test and deploy applications to BEA WebLogic Server Version 6.1, 7.0 and 8.1 using Deployment Toolkit for WebSphere Studio, WebLogic Edition

Improve team productivity with effective change management

To create engaging Web applications quickly and cost-effectively, you depend on the diverse, collaborative input of your entire development team including graphic designers, developers and business analysts. WebSphere Studio Site Developer is tightly integrated with IBM Rational ClearCase and IBM Rational ClearQuest software configuration management solutions. This deep integration enables a wide range of change management operations to be performed directly from within WebSphere Studio Site Developer, and allows an integrated view of projects that helps to increase both collaboration and team productivity. WebSphere Studio Site Developer also provides support for Concurrent Versions System and third-party software configuration management systems through plug-ins.

Evolve to meet customer needs for successful e-business

With WebSphere Studio Site Developer, you can streamline development to meet customer needs and keep pace with e-business evolution. You can extend award-winning IBM application development tools to leverage independent-vendor and corporate tools to form an integrated developer community supported by the versatile WebSphere software platform. Increase productivity. Speed development and deployment time. And get to market ahead of your competition.

For more information

To learn more about IBM WebSphere Studio Site Developer Version, visit: ibm.com/software/awdtools/studiositedev

IBM WebSphere Studio Site Developer, Version 5.1.2 at a glance

Hardware requirements

- Intel® Pentium® II minimum; Pentium III 500MHz or later recommended
- Display, minimum requirements:
 - For Microsoft Windows® 2000, and Windows XP: SVGA (800 x 600) display minimum; 1024 x 768 recommended
 - For Linux: X VGA (1024 x 768) display minimum
- 512MB RAM minimum; 768MB RAM recommended
- Disk space requirements: 1.3GB minimum for installing WebSphere Studio Site Developer and additional disk space for development resources (minimum disk space can be reduced if optional features and run times are not installed).
- A mouse or alternative pointing device

Software requirements

- Windows 2000 Professional SP 2 or later, or Windows XP Professional SP 1 or later
- Red Hat Linux Version 7.2 or Version 8.0 or SuSe Linux Version 7.2 or Version 8.1
- Browsers:
 - For Windows: Microsoft Internet Explorer Version 5.5 SP1 or later, or Netscape Navigator Version 4.76 or later. (The Universal Test Client and Web Services Explorer require the use of Netscape Navigator Version 6.0 or later, or Microsoft Internet Explorer Version 5.0 or later.)
 - For Linux: Netscape Navigator, Version 4.6 or Version 6.0 or Mozilla, Version 7.0 or later.

(The Universal Test Client and Web Services Explorer require the use of Netscape Navigator Version 4.6, or Mozilla Version 7.0 or later.)

- TCP/IP installed and configured

Note: Java Runtime Environment (JRE) Version 1.3 must be installed to profile your applications.

Run-time environment support

- WebSphere Application Server - Express (Version 5.0 or 5.1) installed locally or remotely
 - WebSphere Application Server (Version 4.0, 5.0 or 5.1) installed locally or remotely
 - Apache Tomcat (Web application support only)
-



© Copyright IBM Corporation 2004

IBM Corporation
Software Group
Route 100
Somers, NY 10589
U.S.A.

Produced in the United States of America
04-04
All Rights Reserved

ClearCase, DB2, DB2 Universal Database, the e-business logo, IBM, the IBM logo, Informix, Rational and WebSphere are trademarks of International Business Machines Corporation in the United States, other countries or both.

Java and all Java-based trademarks are trademarks of Sun Microsystems, Inc. in the United States, other countries or both.

Intel and Pentium are trademarks of Intel Corporation in the United States, other countries or both.

Microsoft, and Windows are trademarks of Microsoft Corporation in the United States, other countries or both.

Other company, product and service names may be trademarks or service marks of others.

1 WebArt Designer and AnimatedGIF Designer are not supported by Linux.



G325-5535-03