



IBM Rational Software Conference 2009  
As Real as It Gets!



# The Enterprise Architecture Workspace: Enhancing the Management of your Architecture Blueprint

**James Knowles**

WW Community of Practice Leader, Enterprise Architecture

**Rational.** software

**iEA08**

# Agenda

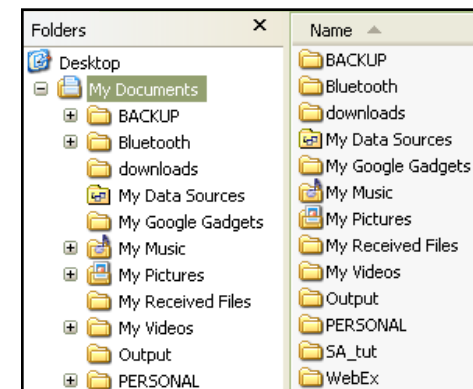
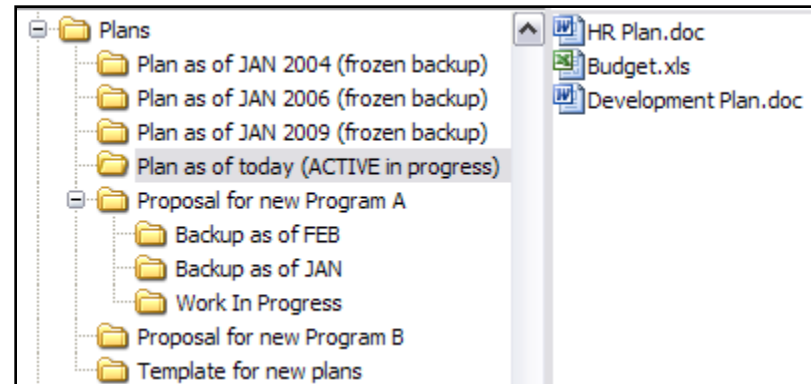
- Partitioning
  - ▶ Define it, Explain it and describe feature set
- Enterprise Architecture as a Blueprint
  - ▶ The EA lifecycle and the implementation lifecycle
- The Enterprise Architecture Workspace
  - ▶ Basic Concepts
  - ▶ Usage Patterns
    - “As Is” – “To Be” ; Baselines & Variants
    - Change Management Interface
    - Peripheral Tools
    - What workspace is not
- Demonstration
- Future Direction & Evolution
- Q&A, Discussion

# Partitioning the EA repository

- The term “partitioning” is used to describe various capabilities
  - ▶ It is a theme rather than a feature
- These capabilities have all some common aspects
  - ▶ The ability to handle large encyclopedias (many model elements)
  - ▶ In a large team setup (many users)
  - ▶ In a large project setup (many tasks)
- However these capabilities are distinct and unique
  - ▶ Therefore using the term “Partitioning” may lead to confusion as it is not quite clear what one may be referring to
  - ▶ The following slides will explain the “theme” and how it is broken down to features in SA

## Partitioning - Refined

- **Views:** The ability to define sets of data to be presented in a distinct, user defined, single explorer window
  - ▶ Static: list of model elements
  - ▶ Dynamic: List based on query results
- **Workspaces:** A concept describing an isolated area within an encyclopedia dedicated to the performance of a certain task(s)
  - ▶ Calls for utilities that help define, manage and compare workspaces
  - ▶ While this allows two elements with the same type and the same name to exist in multiple workspaces, these are in fact versions of the same element
- **Folders:** A concept describing an organization method similar to standard file system ordering
  - ▶ Once completed will effectively support a namespace concept where two elements with the same name of the same type can exist in two folders
  - ▶ Each workspace can contain multiple folders

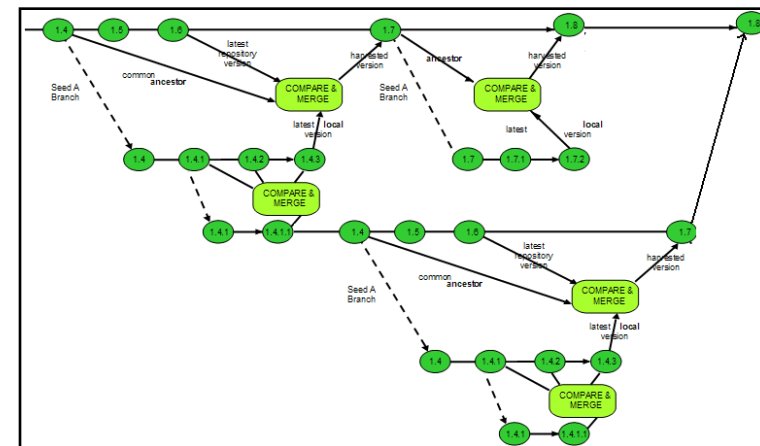


# Agenda

- Partitioning
  - ▶ Define it, Explain it and describe feature set
- Enterprise Architecture as a Blueprint
  - ▶ The EA lifecycle and the implementation lifecycle
- The Enterprise Architecture Workspace
  - ▶ Basic Concepts
  - ▶ Usage Patterns
    - “As Is” – “To Be” ; Baselines & Variants
    - Change Management Interface
    - Peripheral Tools
    - What workspace is not
- Demonstration
- Future Direction & Evolution
- Q&A, Discussion

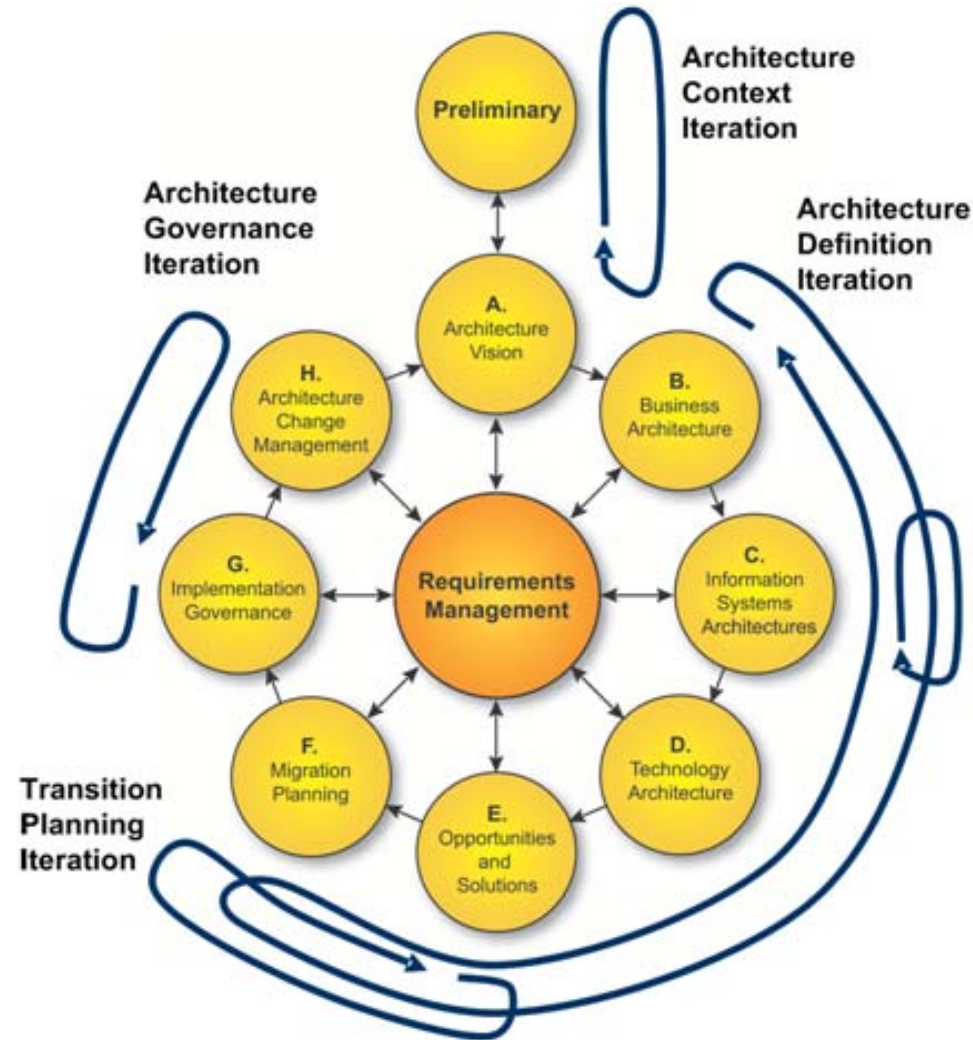
# The Implementation & Deployment Lifecycle

- This talk is NOT about implementation & deployment
  - ▶ But we do want to contrast & compare, as well as set context
- Construction Tools involved
  - ▶ Debuggers, Compilers, Editors, Test Suites, Modeling, Deployment
- Change Management tools
  - ▶ Bug trackers, Task management, Source Control and Configuration
- Change is
  - ▶ Frequent, rapid, reviewed quickly, light-medium approval cycle
  - ▶ Multiple simultaneous changes made to the same artifacts as common practice
- The main output is “something that runs”
  - ▶ Multiple branches could exist
  - ▶ ....as multiple releases exist



# The EA Lifecycle

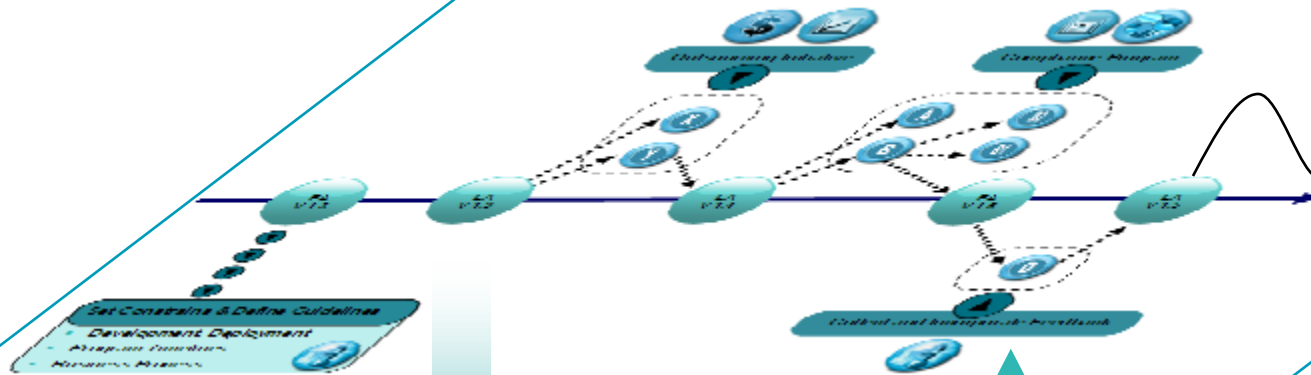
- Construction Tools involved
  - ▶ Enterprise Architecture Modeling (Strategy, Business Process, High Level Architecture, Services and Capabilities, Roadmaps, Organizations, Plans)
  - ▶ Documentation & Reporting
- Change is
  - ▶ Continuous, slower, medium-high approval cycle (governance)
    - Change i/f, Audit IDs, Refined ACL
  - ▶ Multiple plans and programs are proposed
- The main output is an architecture blueprint
  - ▶ Recommendations
  - ▶ Constraints
- How to transition and decide between blueprints
  - ▶ Timelines
  - ▶ Costs



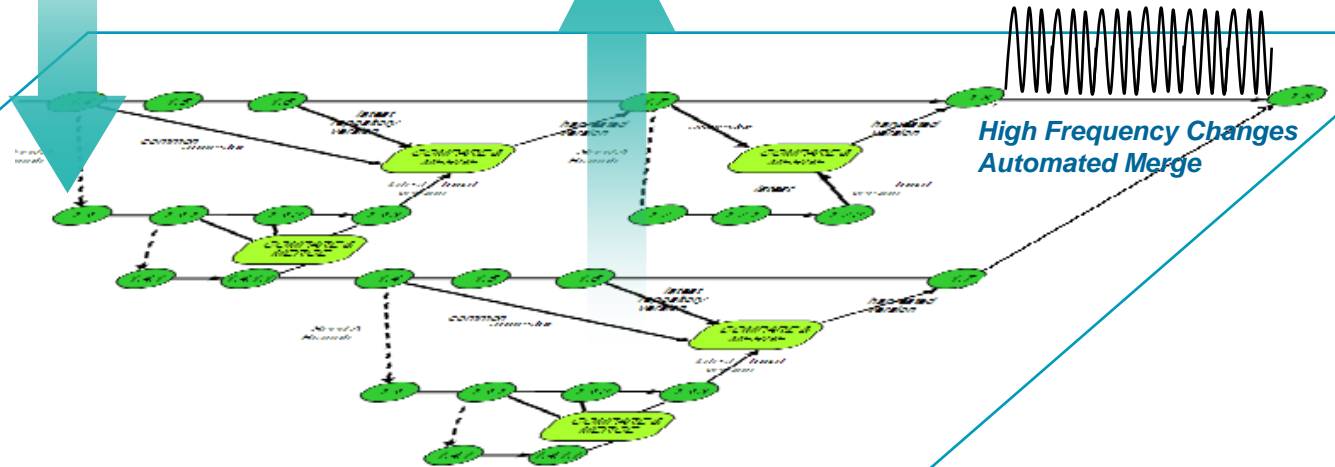
TOGAF 9 ADM



*Low Frequency Changes  
Merge (from various sources)  
Reviewed Manually*



*High Frequency Changes  
Automated Merge*





# Agenda

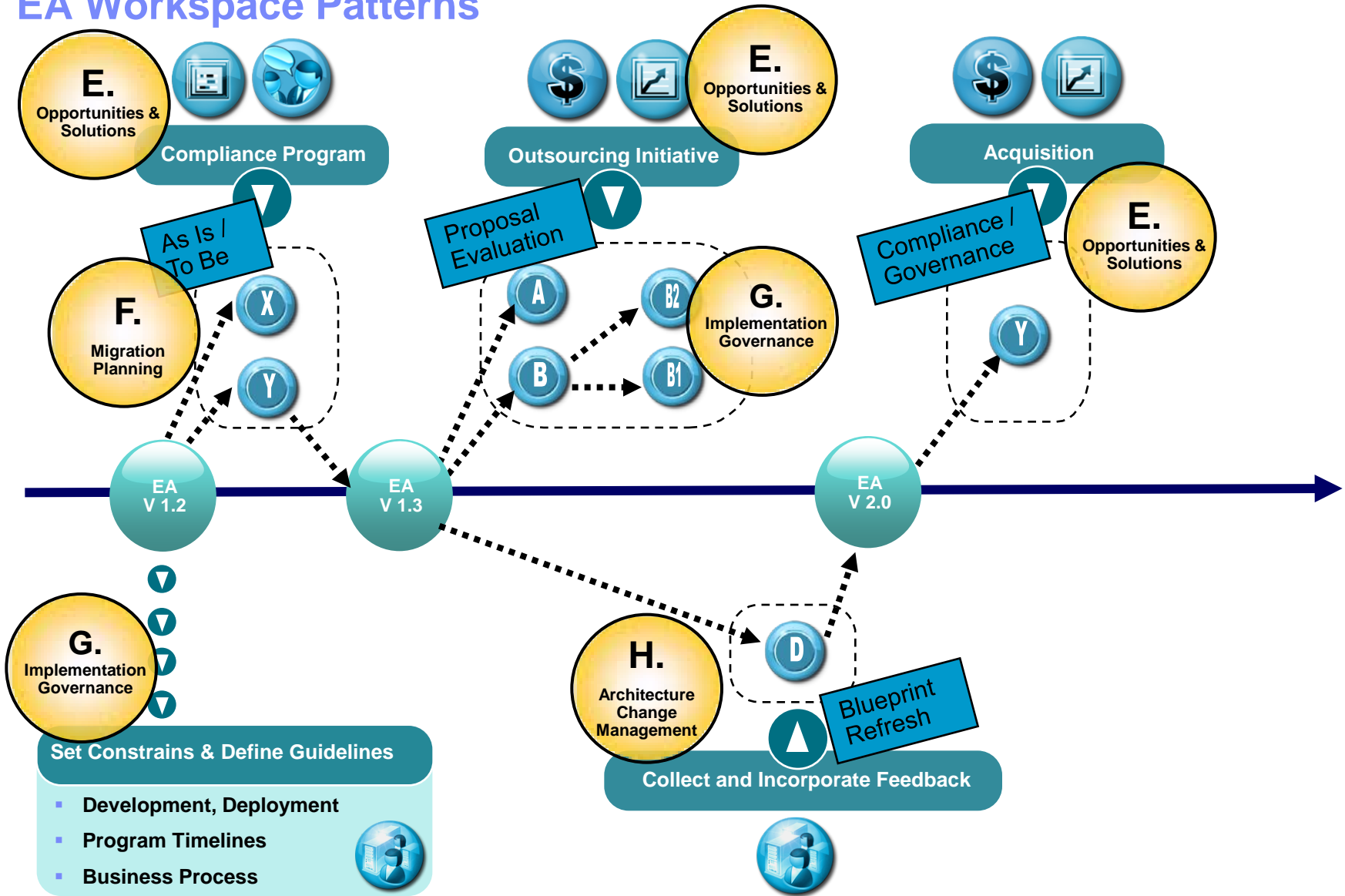
- Partitioning
  - ▶ Define it, Explain it and describe feature set
- Enterprise Architecture as a Blueprint
  - ▶ The EA lifecycle and the implementation lifecycle
- The Enterprise Architecture Workspace
  - ▶ Basic Concepts
  - ▶ Usage Patterns
    - “As Is” – “To Be” ; Baselines & Variants
    - Change Management Interface
    - Peripheral Tools
    - What workspace is not
- Demonstration
- Future Direction & Evolution
- Q&A, Discussion



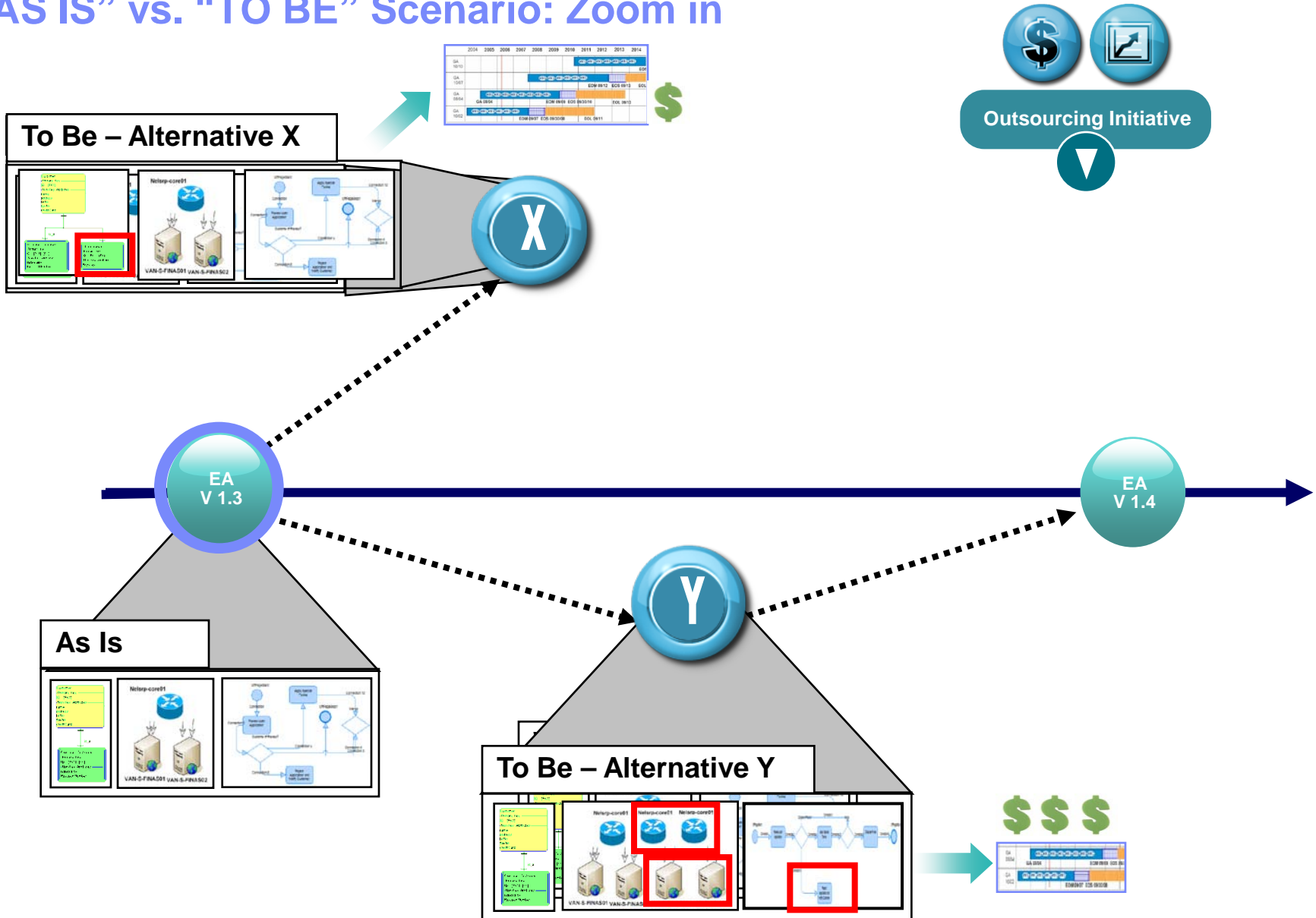
# What is a Enterprise Architecture Workspace ?

- A container of EA modeling artifacts
  - ▶ Spans across Definitions, Diagrams, Symbols etc
  - ▶ Spans across domains (Business Modeling, Strategy Mapping, Network Diagrams, Organization charts etc)
- The workspace is isolated for the purpose of dedicated project, program etc
  - ▶ Changes done in this workspace will not affect the master blueprint
  - ▶ Once approved, changes can be rolled up into the master blueprint
- A workspace can be “baselined”
  - ▶ A frozen snapshot in time of the entire architecture
- New workspaces can be created from a “baselined” workspace
  - ▶ Spawn a new project with pre populated content
- Changes in Workspaces can be associated with tasks or change request in a change tracking system

# EA Workspace Patterns



# “AS IS” vs. “TO BE” Scenario: Zoom in



## What a workspace is not...

- It is not a UI filter
  - ▶ Use the “views” feature introduced in SA 11.0
  - ▶ Static & Dynamic views should be used as UI filters
- It is not a folder
  - ▶ Using workspace as a folder may bring about undesired results
    - Users cannot report across workspaces
    - Users cannot link/relate items across workspaces
  - ▶ Examples:
    - DO: Create a Workspace to modify the existing EA Repository in order to develop a proposal
    - DON'T: Create a workspace describing the HR department and another for the Finance department
      - You will not be able to relate the HR manager to the Finance data base

# DEMO

# Agenda

- Partitioning
  - ▶ Define it, Explain it and describe feature set
- Enterprise Architecture as a Blueprint
  - ▶ The EA lifecycle and the implementation lifecycle
- The Enterprise Architecture Workspace
  - ▶ Basic Concepts
  - ▶ Usage Patterns
    - “As Is” – “To Be” ; Baselines & Variants
    - Change Management Interface
    - Peripheral Tools
    - What workspace is not
- Demonstration
- Future Direction & Evolution
- Q&A, Discussion

## Considered future evolution

- Explicit versioning
- Unified comparing utilities
- Partitioning Step 3/3: Folders
- Workspace associated with change requests or tasks



# QUESTIONS

Thank You

© Copyright IBM Corporation 2009. All rights reserved. The information contained in these materials is provided for informational purposes only, and is provided AS IS without warranty of any kind, express or implied. IBM shall not be responsible for any damages arising out of the use of, or otherwise related to, these materials. Nothing contained in these materials is intended to, nor shall have the effect of, creating any warranties or representations from IBM or its suppliers or licensors, or altering the terms and conditions of the applicable license agreement governing the use of IBM software. References in these materials to IBM products, programs, or services do not imply that they will be available in all countries in which IBM operates. Product release dates and/or capabilities referenced in these materials may change at any time at IBM's sole discretion based on market opportunities or other factors, and are not intended to be a commitment to future product or feature availability in any way. IBM, the IBM logo, Rational, the Rational logo, Telelogic, the Telelogic logo, and other IBM products and services are trademarks of the International Business Machines Corporation, in the United States, other countries or both. Other company, product, or service names may be trademarks or service marks of others.



Select View/Master/Slide Master to add Session Number Here