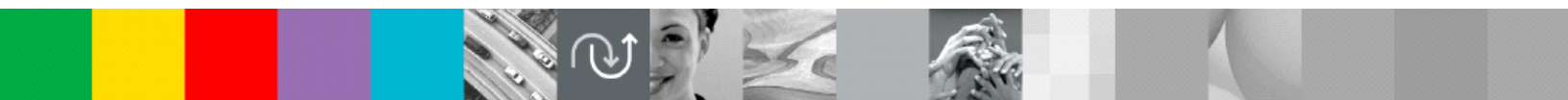




An IBM Proof of Technology

Discovering the Value of IBM Rational Quality Manager

Presentation



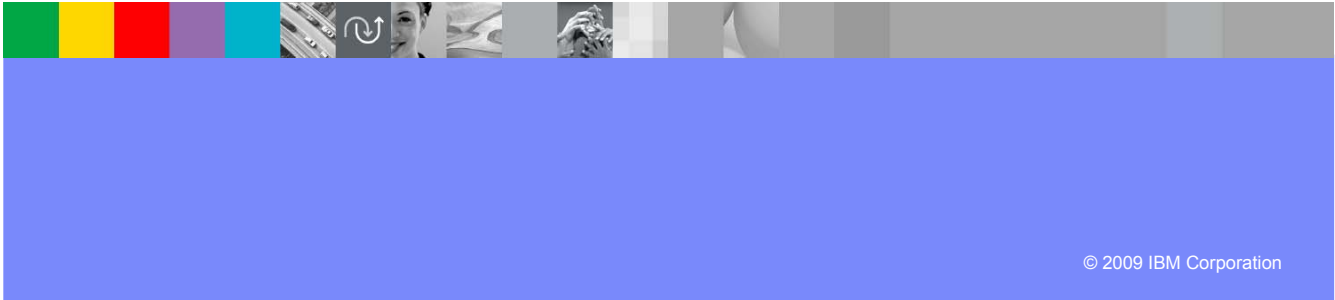
PoT.Rational.08.2.049.02

© Copyright International Business Machines Corporation 2008, 2009. All rights reserved.

US Government Users Restricted Rights - Use, duplication or disclosure restricted by GSA ADP
Schedule Contract with IBM Corp.

Discovering the Value of IBM Rational Quality Manager

An IBM Proof of Technology



© 2009 IBM Corporation

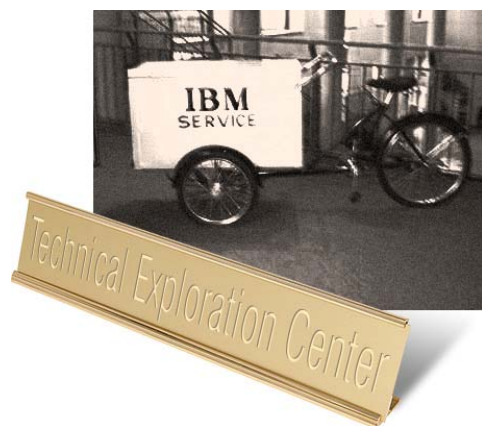
Welcome to the Technical Exploration Center

- Introductions
- Access restrictions
- Restrooms
- Emergency Exits
- Smoking Policy
- Breakfast/Lunch/Snacks – location and times
- Special meal requirements?



Introductions

- Please introduce yourself
- Name and organization
- Current integration technologies/tools in use



What do you want out of this Exploration session?

Agenda

- Rational® Quality Manager Overview
- Test Management Overview
 - ▶ Lab 1: Test Management
- Test Planning Overview
 - ▶ Lab 2: Test Planning
- Test Creation Overview
 - ▶ Lab 3: Test Creation
- Test Execution Overview
 - ▶ Lab 4: Test Execution
- Reporting Overview
 - ▶ Lab 5: Reporting
- Lab 6 Impact Analysis of a Requirement Change
- Lab 7 Importing Requirements from Requisite Pro® (Optional)
- Lab 8: Running Rational Functional Tester (RFT) tests from Rational Quality Manager (Optional)

Objectives

- Demonstrate how Rational Quality Manager:
 - ▶ Mitigates business risk: Catch defects earlier and keep the team in synch with dynamic process and activity-based workflows
 - ▶ Improves operational efficiency: Automate labor-intensive lifecycle processes and determine optimal plans addressing wide range of platforms and requirements
 - ▶ Provides greater visibility of metrics: Make reliable decisions with constant access to prioritized metrics tailored for individuals and teams
 - ▶ Protect existing investments and deliver greater predictability: Adopt successful deployment patterns and map to operational Key Performance Indicators (KPIs), platforms and requirements



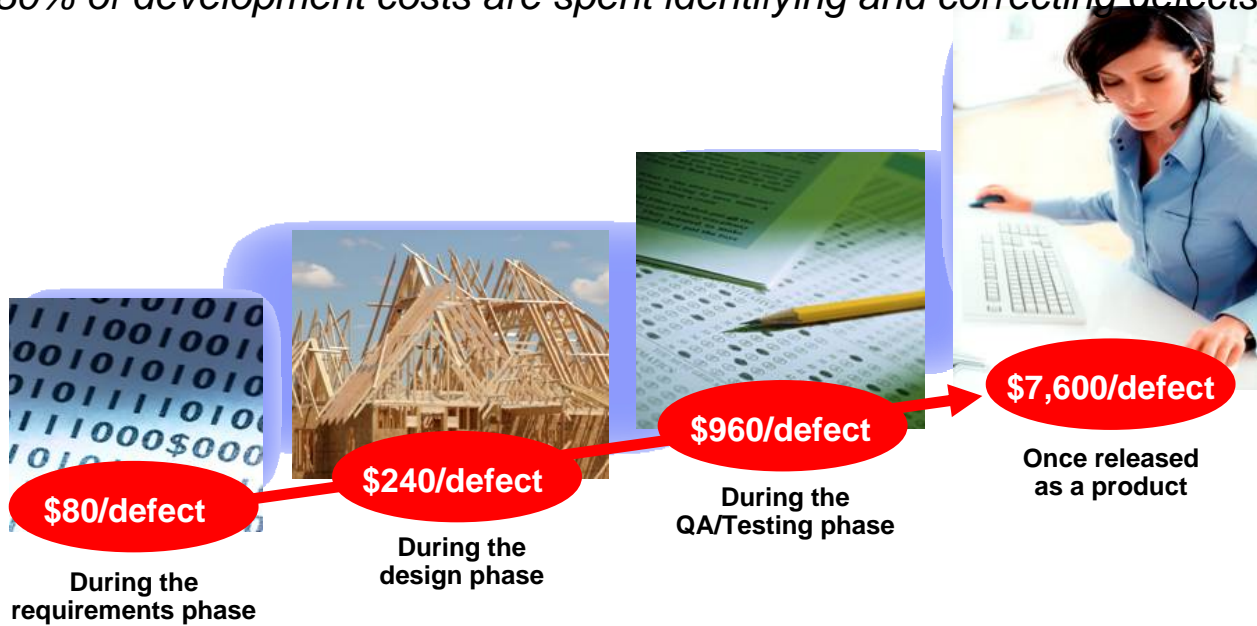
IBM Software Group

Rational Quality Manager Overview

An IBM Proof of Technology

The increasing costs of fixing a defect

80% of development costs are spent identifying and correcting defects!



Source: GBS Industry standard study
 Defect cost derived in assuming it takes 8 hrs to find, fix and repair a defect when found in code and unit test.
 Defect FFR cost for other phases calculated by using the multiplier on a blended rate of \$80/hr.

Process-led Automation yields real savings

Examples of automation capabilities

Asset	Developing repeatable industry test solutions			Advanced Defect Analysis	Developing repeated test process models applicable to future projects		Integrating end to end processes	
	Test cases copied	Manual scripts copied	Manual scripts Reuse	Prevent and Block duplicate Defects	Baseline & migrate documentation	Baseline artifacts	Leveraging component Reuse	Dynamic updates of test assets
Quantity	290	296	1,178	765	1,154	1,711	870	1,883
Hours saved	141	148	589	Discovery in 4 Hr 1,484	577	855	435	470
Value	\$11,600	\$11,850	\$47,000	\$857,000	\$46,200	\$68,000	\$34,800	\$37,700

Source: GBS Test Practices study over 855 projects
 Average per project saving with automation and collaboration best practices calculated on a per asset task and process savings

Estimated hours saved per project: 4700 hours

IBM® Rational raises the bar for Quality management

Scenarios that show the difference

Mitigate Business Risk

Collaborate

Collaborative, continuous, and comprehensive information sharing reduces defects, improves handoff and increases customer satisfaction

Improve Operational Efficiency

Automate

Automating labor-intensive activities reduces time-to-market and increases predictability and consistency to improve return on investment

Make confident decisions

Report

Moment by moment understanding of software quality metrics for immediate corrective action and release decisions addressing both business and IT needs

Mitigate business risk in an environment of constant change

What is needed: Comprehensive quality impact analysis beyond walls of QA with lifecycle collaboration and process orchestration

Live update across lifecycle assets across 4 projects

Requirement modified with business stakeholder

Table Of Contents

- Summary
- Business Objectives
- Test Objectives
- Review and Approvals
- Requirements
- Application Security
- Test Iterations
- Sizing
- Environments
- Test Team
- Quality Goals
- Entry Criteria
- Exit Criteria
- Test Cases
- Attachments
- Show All Sections
-

Requirement work item traceability

Development: Catch performance issues at code early

Deployment: Version history by project prevents starting from scratch..

Rational Quality Manager

- Review and approvals of tasks across projects
- Out of the box requirements integration
- Asset versioning with dynamic updates
- Advanced defect analysis prevents duplicates
- Upstream quality- Static code analysis

Review Type	Name	Status	Comments	Modified
Approver	Mary (Manager)	Pending		
Reviewer	Larry (Lab Manager)	Pending		

Comprehensive risk mitigation and reduced rework cost by \$900/defect

Improve operational efficiency

What is needed: Team awareness of activities, clear ownership and simpler on-boarding

Rational Quality Manager

- Process guidance
- Team and individual task workflow
- Easy to visualize commitments
- Monitor asset ownership and events
- Web 2.0 anytime, anywhere access

Keep on schedule and under budget. Know what others are doing, what is expected of you.

Make confident decisions

What is needed: Always current metrics tailored by role for the right stage coupled with trends, best practices and proven assets to accelerate decision making

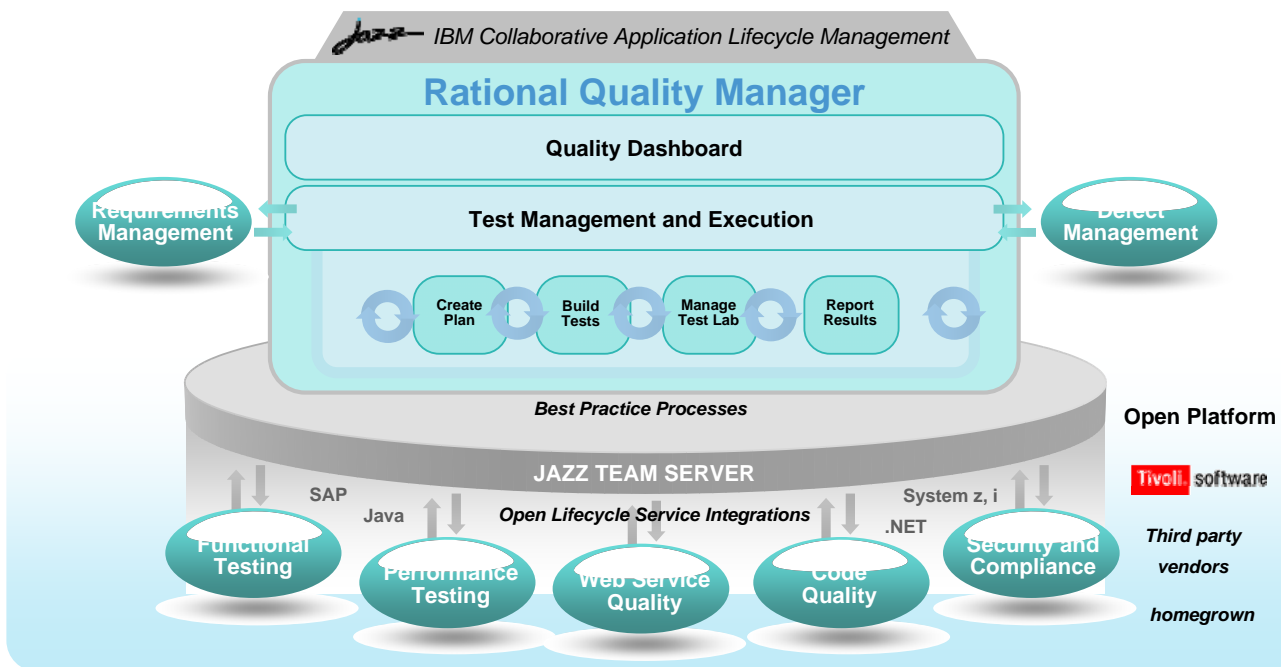
- 2-level project planning
- Iterative development
- Whole team
- Test asset based reuse

On demand reporting for vital project information customizable by role

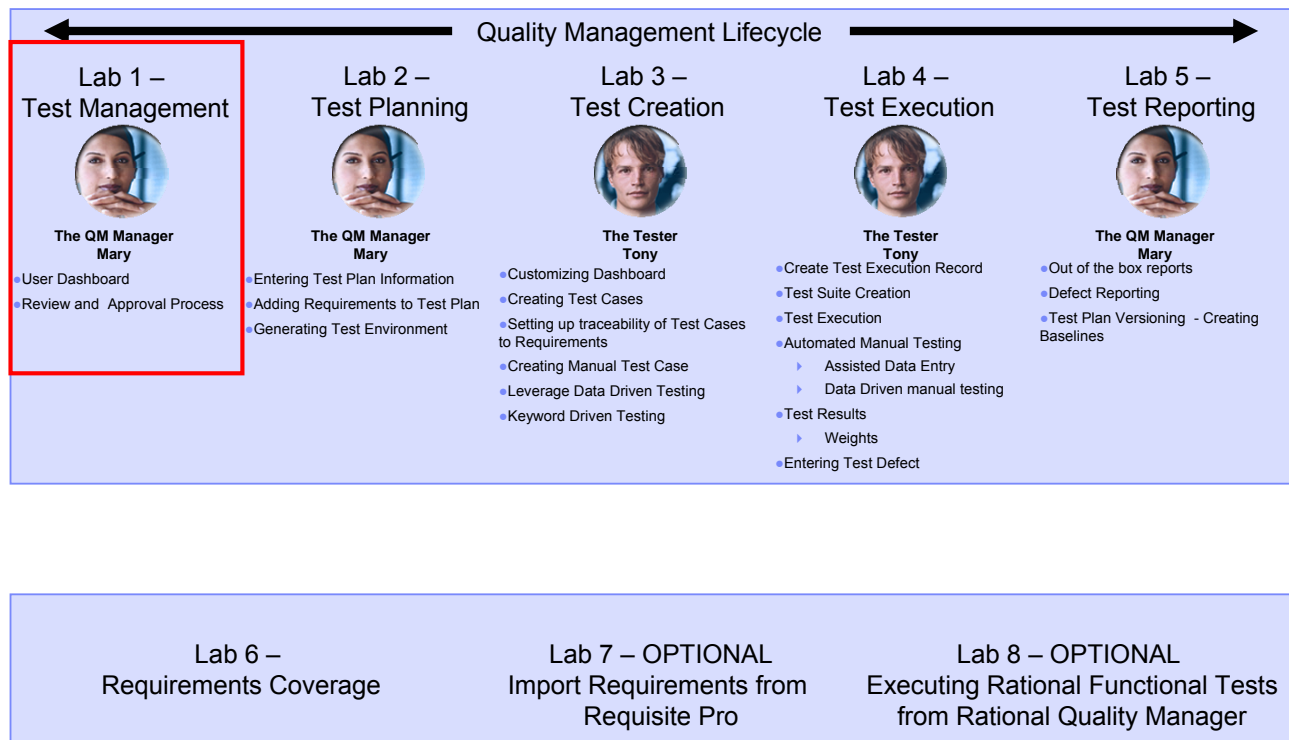
Process and asset based predictive analytics

Project 95% confidence on coverage and cycle completion

Centralized test management offering allowing full lifecycle support across all types of testing and platforms



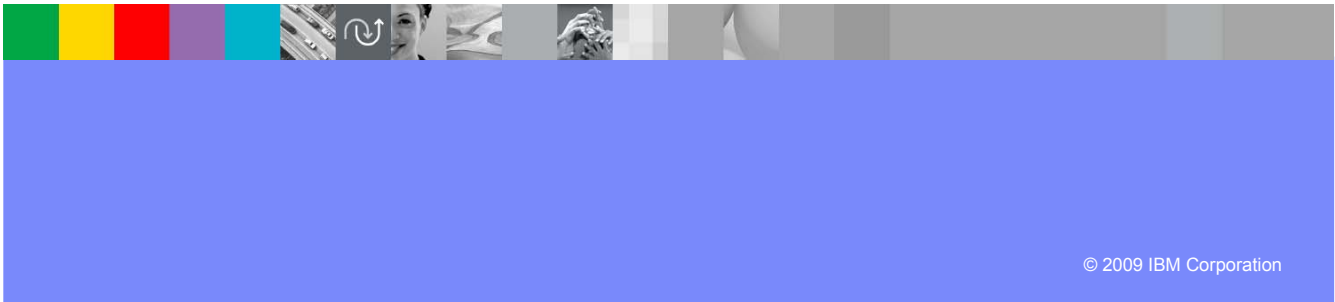
PoT Lab Overview



Lab #1

Test Management

An IBM Proof of Technology



Collaboration to synchronize team efficiency
People, not organizations, make great software

Promoting team synergy

- ✓ Clearly define roles and responsibilities
- ✓ Manage team activities with customized interface
- ✓ Create dynamic test plans
- ✓ Communicate project status efficiently



Up to date work progress information

Task management for individual and team

Challenge: Assigning and coordinating test plan ownership and events across distributed teams

Solution: Visualize commitments, reduce rework, track tasks and monitor events

Requirements, Application security

Test Objectives, Case assignment and Signoff

Test iterations

Team event log

Individual Task List

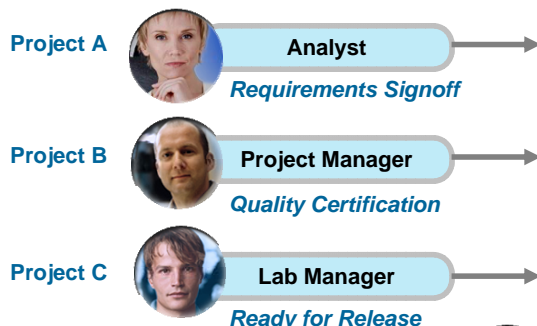
Know what others are doing, know what others expect from you

Proof of process

Challenge: Centralized QA team works with multiple stakeholders across lines of business

Solution: Keeping version history and managing approval process at different phases

All project stakeholders can review, refine and sign-off on all quality related artifacts



Artifact Reviews and Approvals

Review Type	Name	Status	Comments	Modified
Approver	Mary (Manager)	Pending		
Reviewer	Larry (Lab Manager)	Pending		

QA team maintains accurate project history with detailed artifact versioning



Artifact Versioning

Type	Revision	Name	Date	Originator	Details
1	Draft version	1 minute ago	ADMIN		

Complete Lab 1

- Identify the Lab Workbook and where to start (page #), where to stop (page #)



IBM Software Group

Lab #2

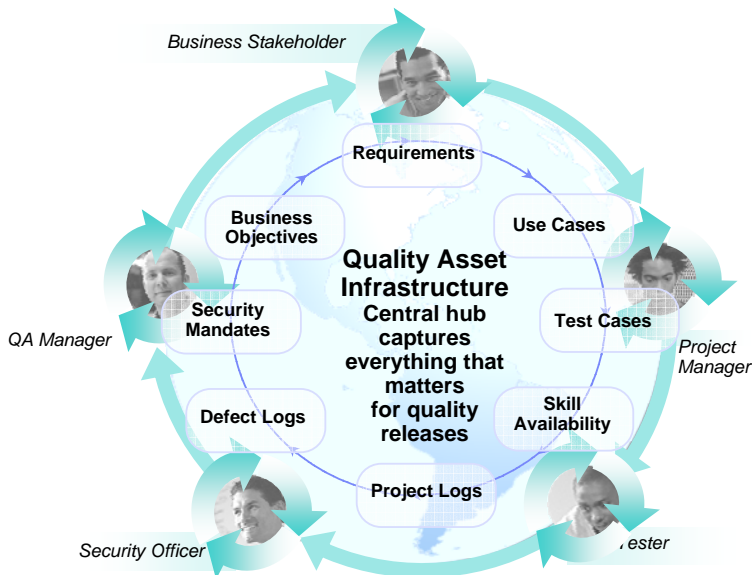
Test Planning

An IBM Proof of Technology



A quality contract for the entire software delivery team

Comprehensive rich test plan



- **Collect and track all test data**
 - ▶ Central location for business objectives requirements, resources, platform and exit criteria to name a few
- **Defined Responsibilities**
 - ▶ Individual sections are assigned to team members to clearly establish ownership
- **Goal Oriented**
 - ▶ Formalized and documented exit criteria
- **Extensible**
 - ▶ Add sections, import custom data
- **Keep track of changes**
 - ▶ Snapshot version control to track plan history throughout the life of the project

Comprehensive dynamic planning and updates

Process flow, not artifacts drives team activities



- ✓ Live dynamic documentation
- ✓ Defines test process and strategy
- ✓ Defines responsibilities
- ✓ Activity based versus hierarchy
- ✓ Business level reporting against quality objectives

Collaborative and adaptive test plan management

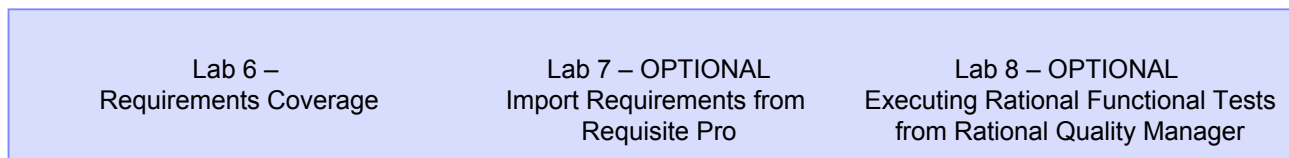
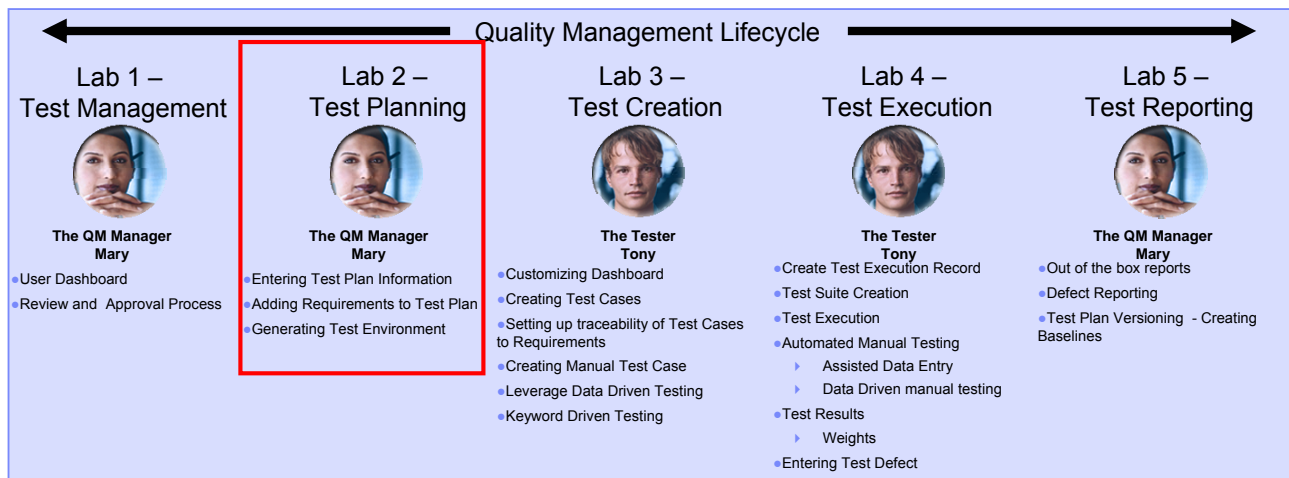
Test plans that are easy to create and evolve with our projects

Track test plan history with version snapshots

Individual ownership for every section

Structured test plan with multiple user defined sections

PoT Lab Overview



Complete Lab 2

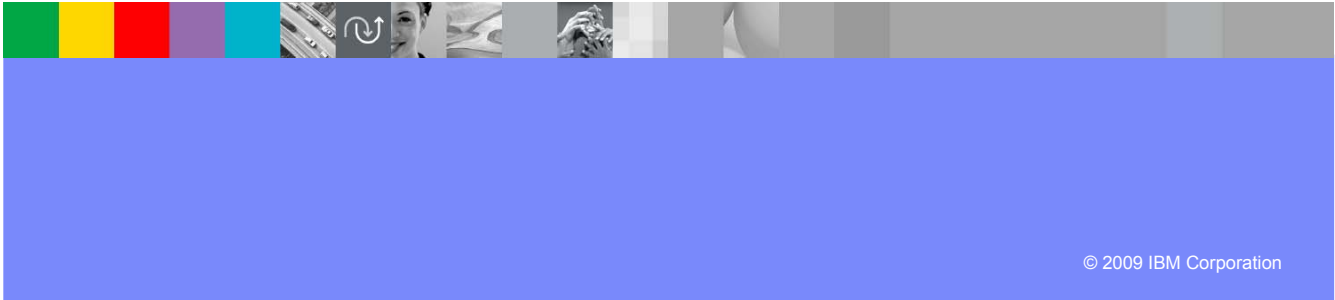
- Identify the Lab Workbook and where to start (page #), where to stop (page #)



Lab #3

Test Creation

An IBM Proof of Technology



Automate to accelerate test creation and execution

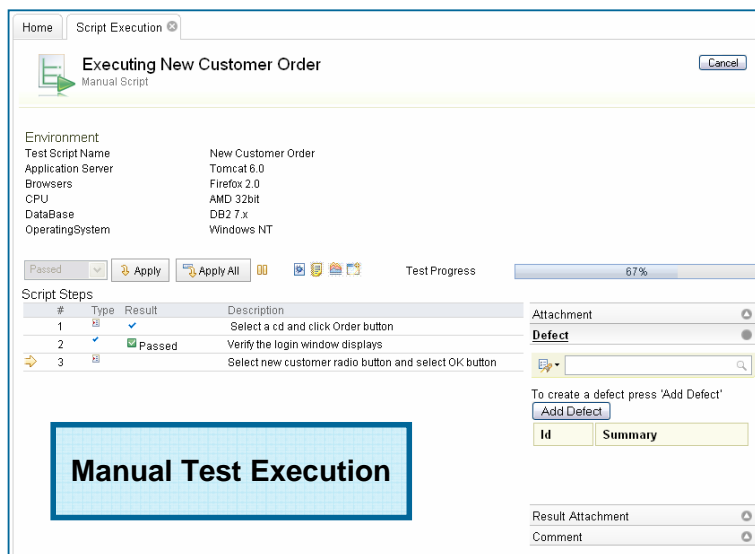
Quality at the speed of business

- Run manual and automated test execution for rapid quality cycles
- Enact test coverage optimization
- Streamline test lab management



Integrated manual test authoring and execution

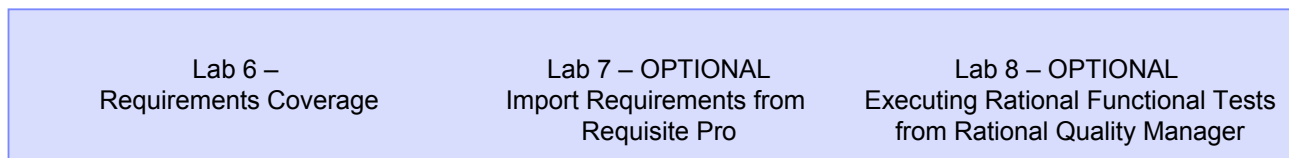
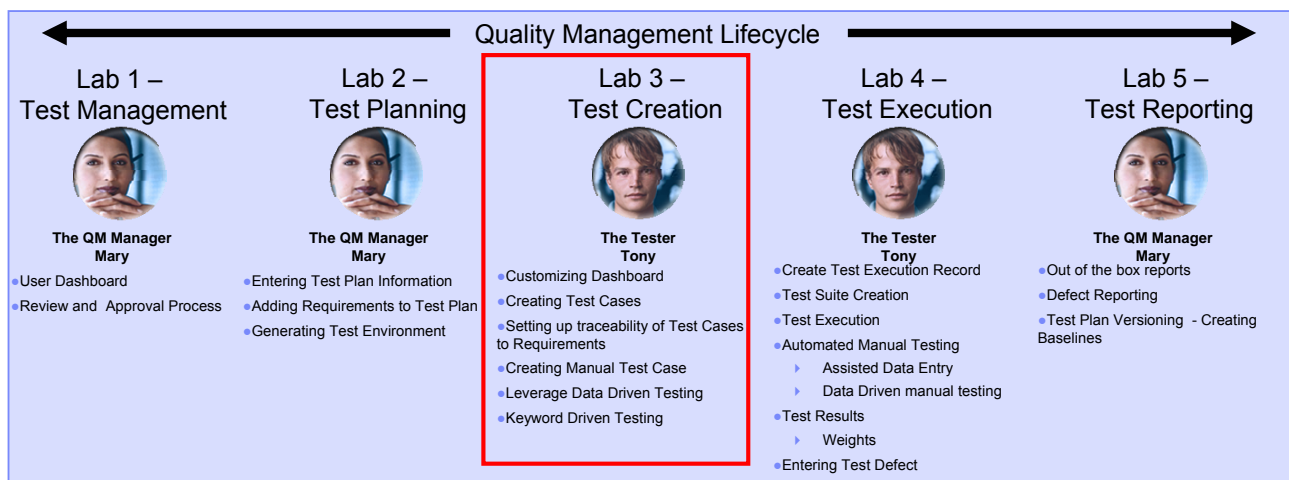
Track execution results and defects from manual test efforts



Manual test author and execute

- ▶ Step by step capture and execution of manual tests
- ▶ Keyword support for integrated manual and automated testing
- ▶ Rich defect capture during execution, including screenshot and attachments
- ▶ Simple intuitive interface for quick test execution

PoT Lab Overview



Complete Lab 3

- Identify the Lab Workbook and where to start (page #), where to stop (page #)



IBM Software Group

Lab #4

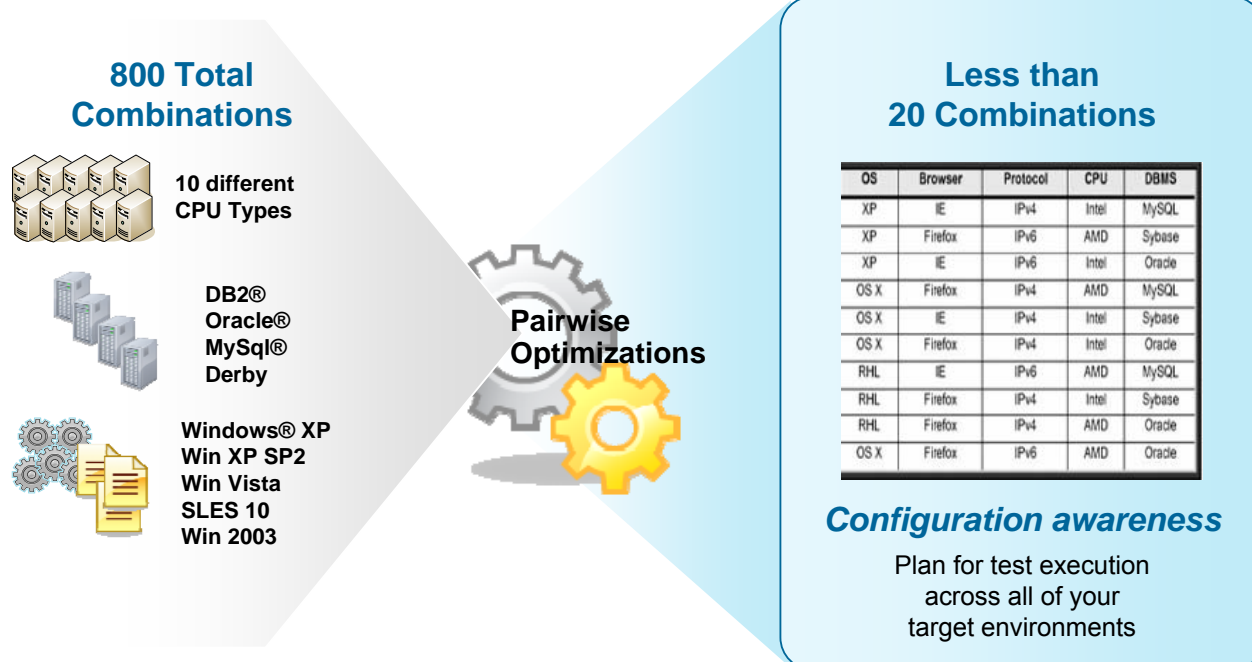
Test Execution

An IBM Proof of Technology



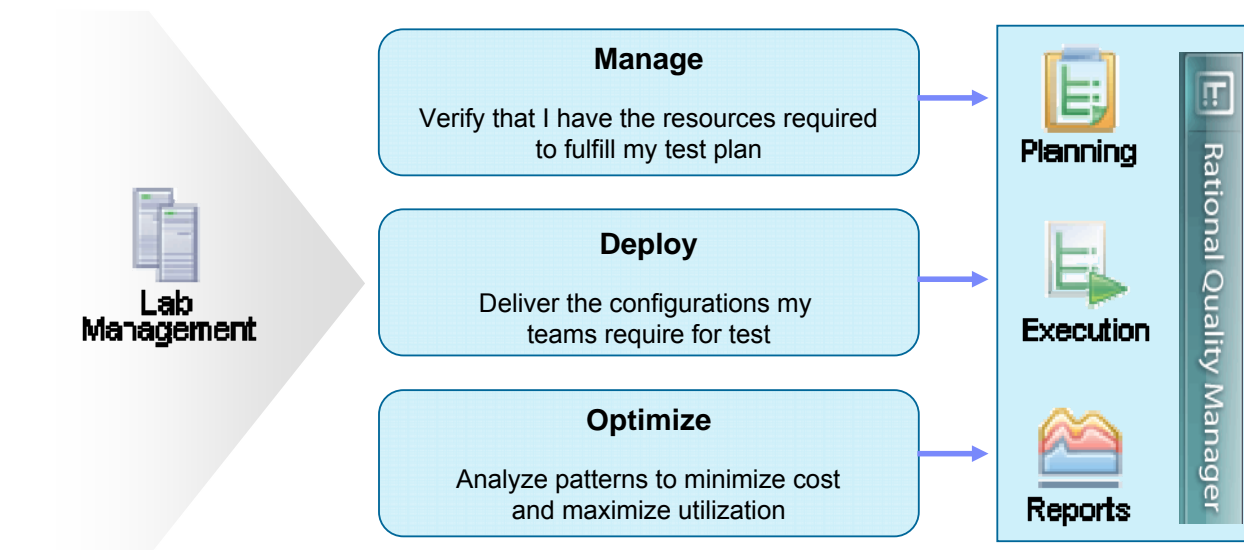
Configuration aware testing

Test the right cases instead of everything. Plan optimal execution



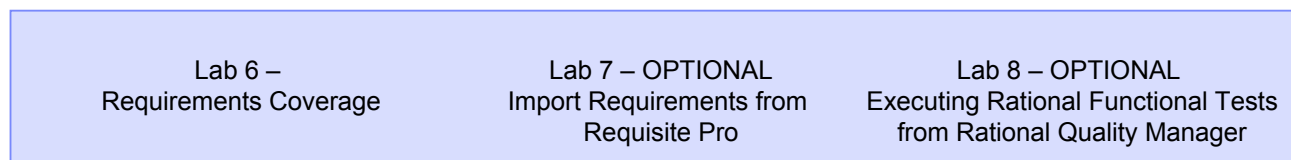
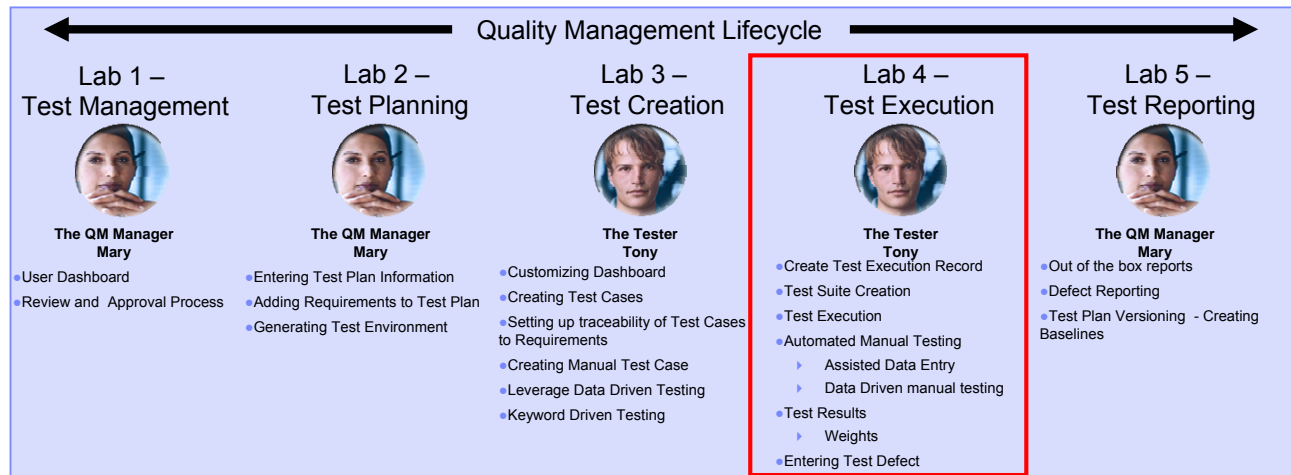
IBM Rational Test Lab Manager

Save 30-40% test time with integrated test lab management



QA Teams spend more than 36% of their time configuring machines to make them ready for testing – IBM Survey

PoT Lab Overview



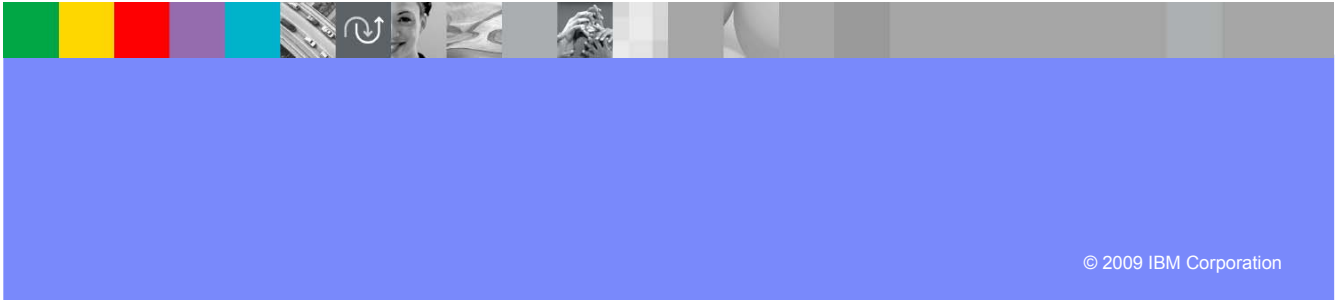
Complete lab 4

- Identify the Lab Workbook and where to start (page #), where to stop (page #)

Lab #5

Test Reporting

An IBM Proof of Technology

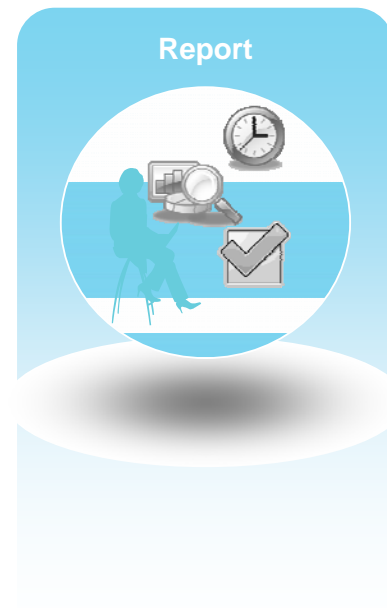


© 2009 IBM Corporation

On demand reporting for instant project status

Moment by moment grasp of project information for decision making

- ✓ Measure progress with extensive query, reporting facilities and dashboard
- ✓ Address needs of QA and stakeholders



Reduce risk with constant access to quality metrics

Lifecycle quality perspective to proactively manage risk

Quality Manager Dashboard



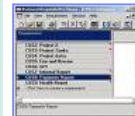
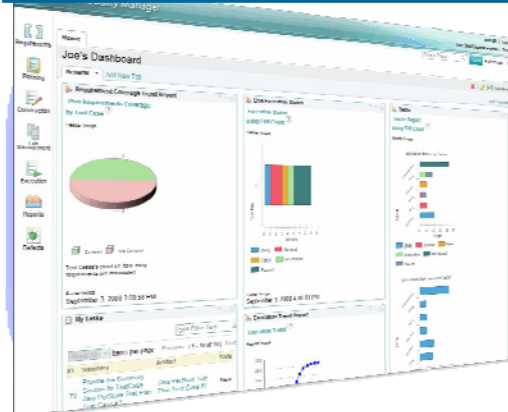
Manual and functional test automation results available



Performance risks are always visible and quickly resolved



Security risks are monitored continuously to ensure business continuity



Testing of requirements can be tracked to assure business needs are realized



Change management and defect tracking fully integrated to assure all changes to production are tested

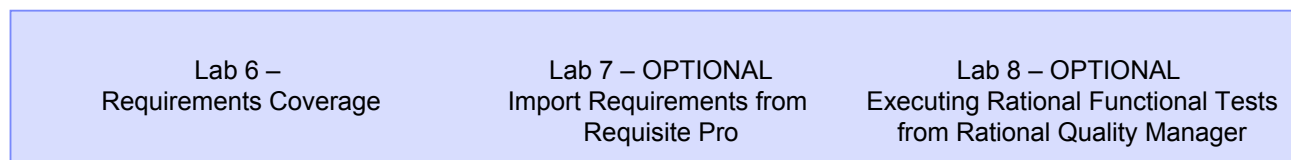
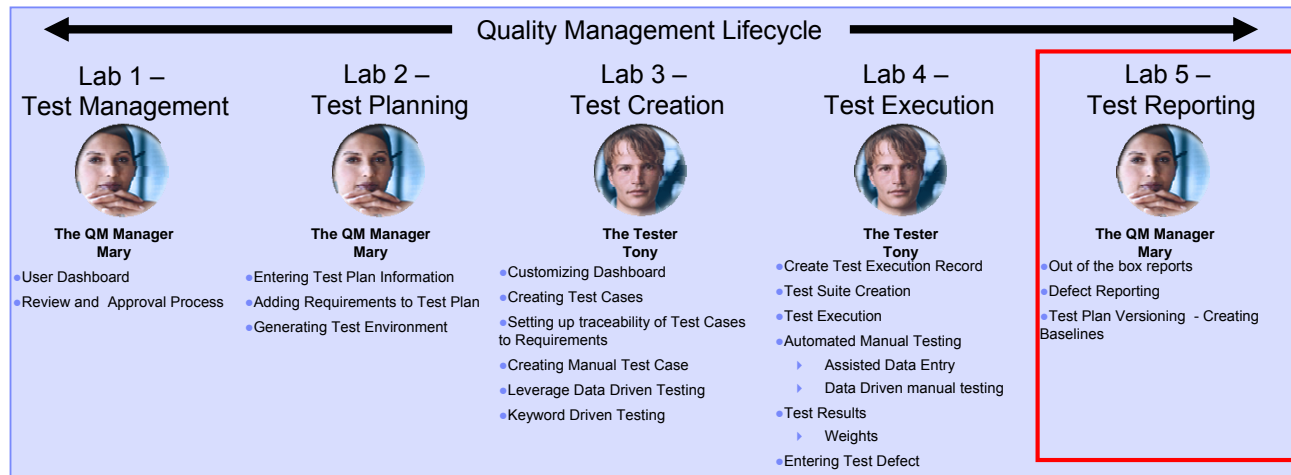
On demand reporting

Snapshot views of project status from multiple perspectives



Customizable reporting enables sharing and communication of vital project information

PoT Lab Overview



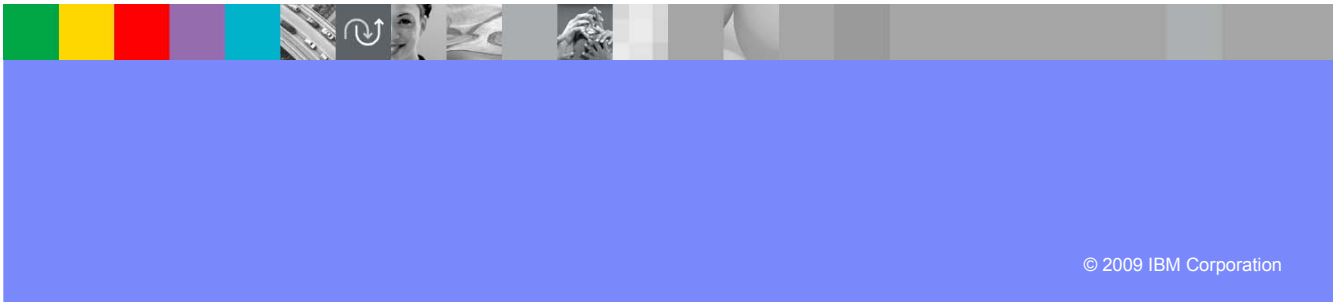
Complete Lab 5

- Identify the Lab Workbook and where to start (page #), where to stop (page #)

Lab #6

Requirements Coverage and Impact Analysis

An IBM Proof of Technology

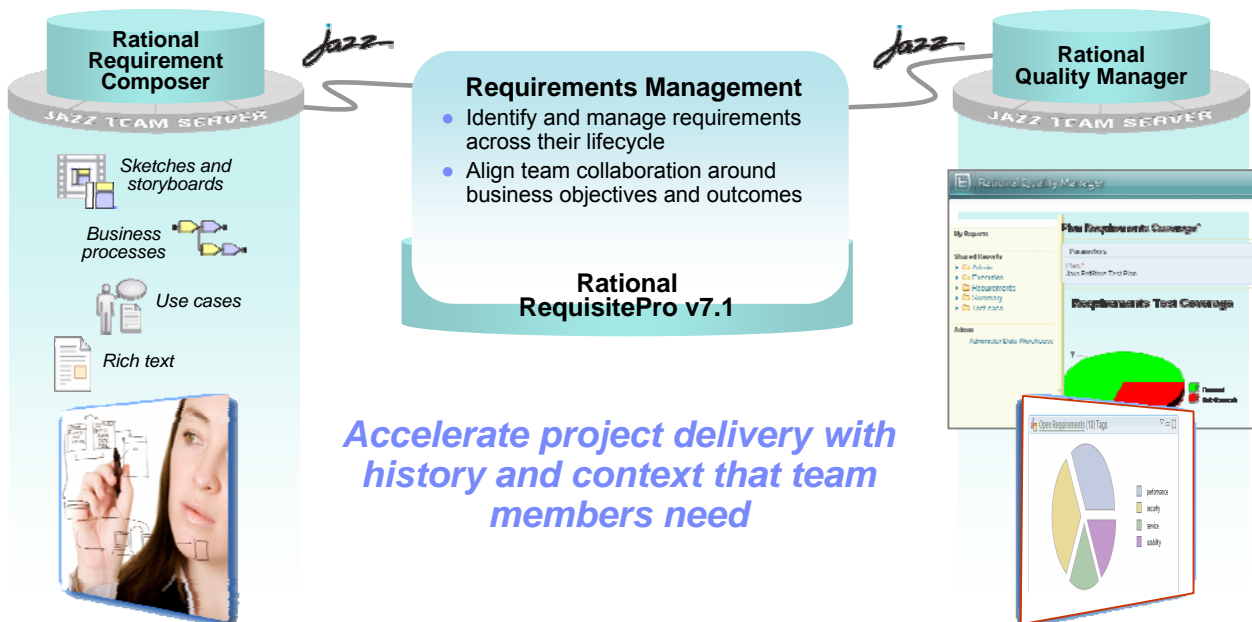


© 2009 IBM Corporation

Traceable requirements definition and management

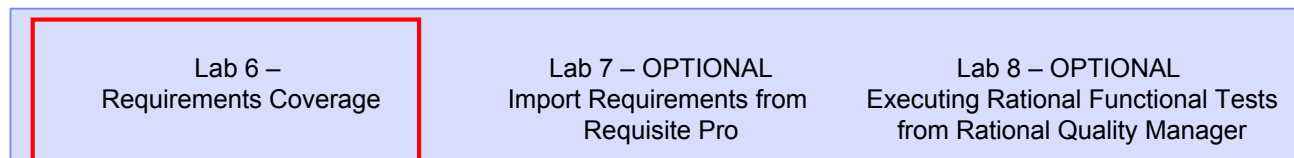
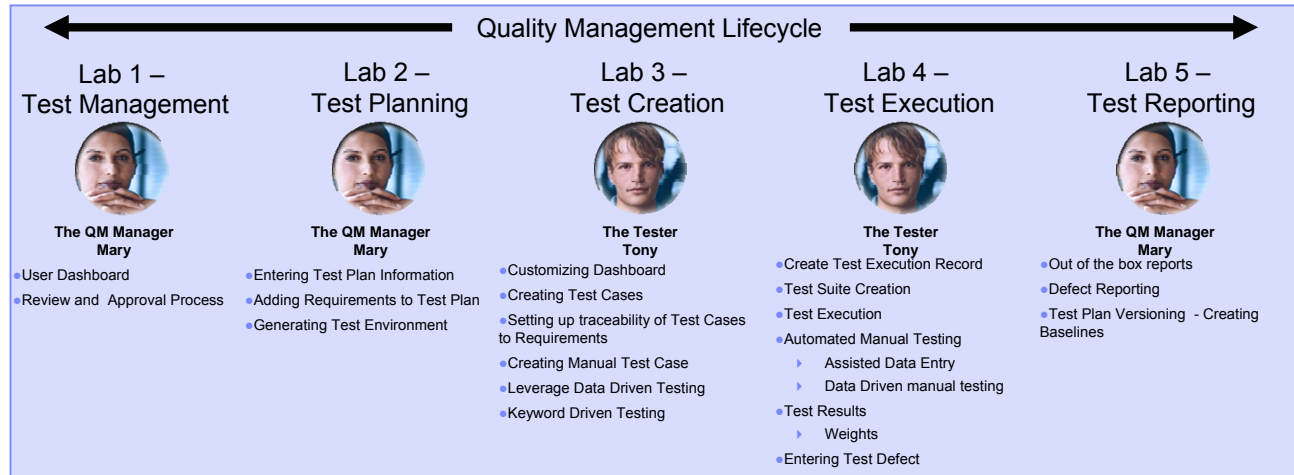
Challenge: Managing a shared understanding of requirements, business and delivery risks

Solution: Reduce rework, focus meetings, and reuse requirements artifacts on future projects



Accelerate project delivery with history and context that team members need

PoT Lab Overview



Complete Lab 6

- Identify the Lab Workbook and where to start (page #), where to stop (page #)



IBM Software Group

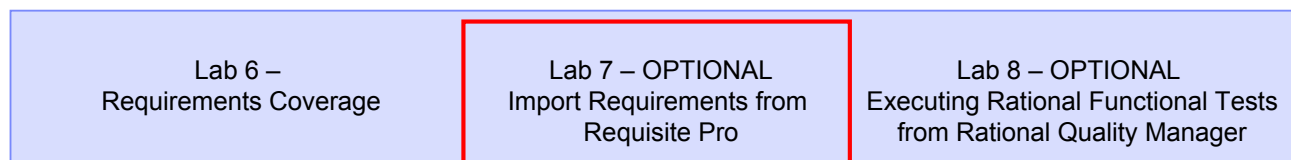
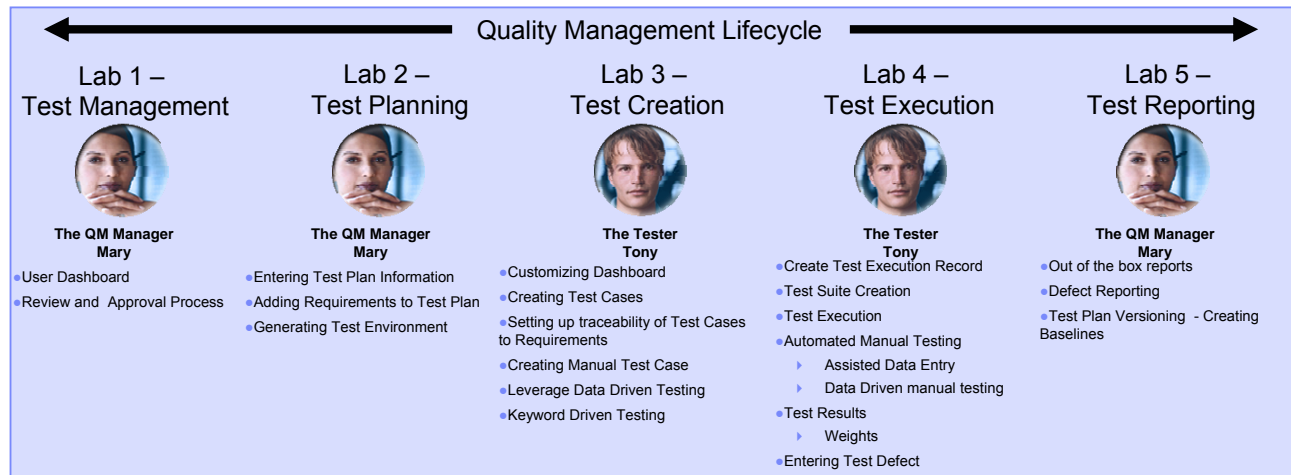
Lab #7 Optional

Importing Requirements from Requisite Pro

An IBM Proof of Technology



PoT Lab Overview



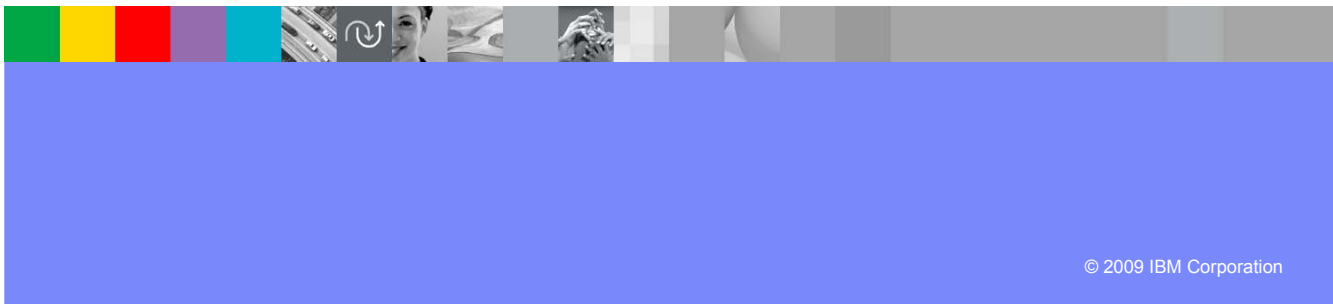
Complete Lab 7

- Identify the Lab Workbook and where to start (page #), where to stop (page #)

Lab #8 Optional

Executing Rational Functional Tests from RQM

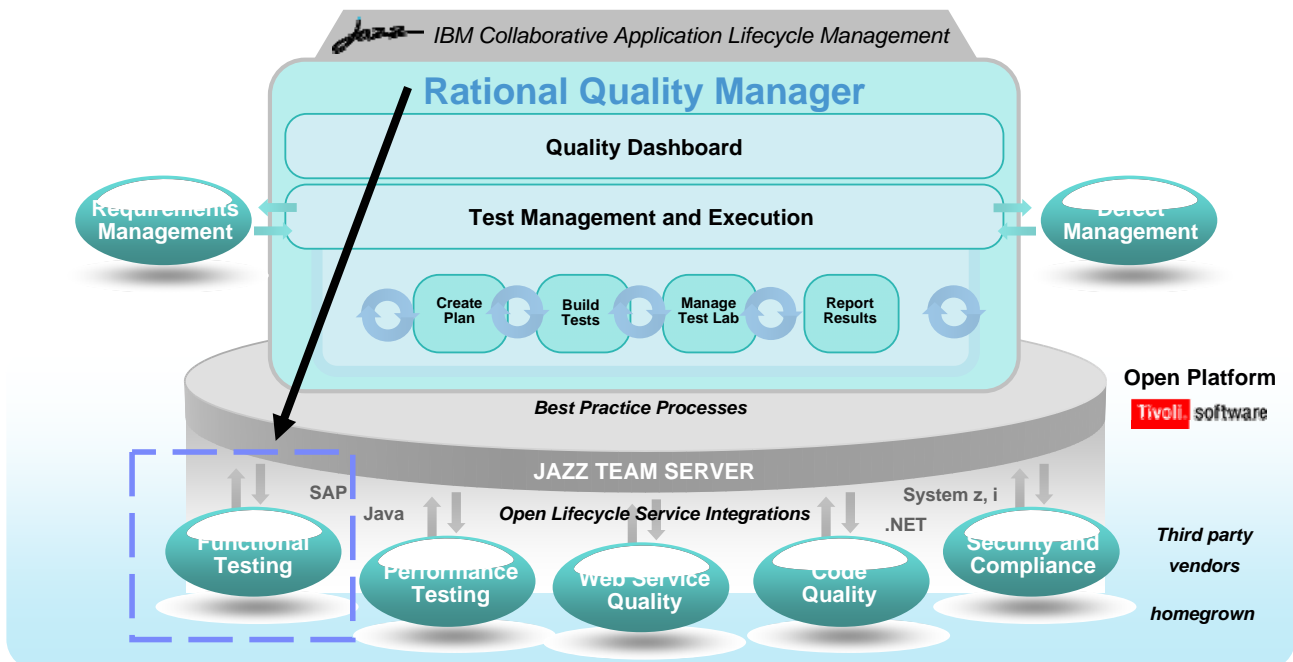
An IBM Proof of Technology



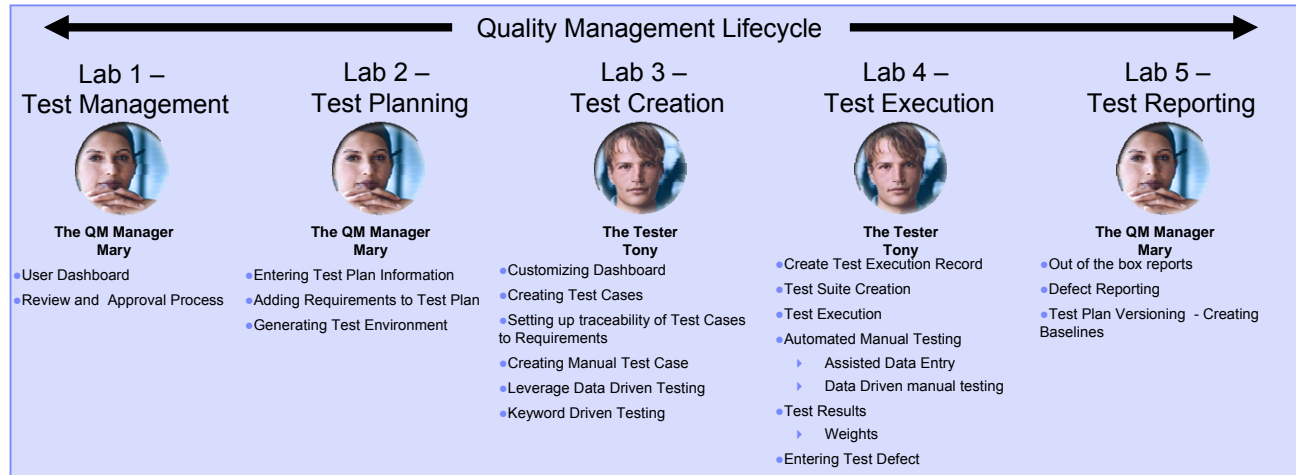
© 2009 IBM Corporation

Execution of RFT Tests from Rational Quality Manager

Ability to execute Rational Performance Tester (RPT), Web Service Tests, Security Tests, etc



PoT Lab Overview



Lab 6 –
Requirements Coverage

Lab 7 – OPTIONAL
Import Requirements from
Requisite Pro

Lab 8 – OPTIONAL
Executing Rational Functional Tests
from Rational Quality Manager

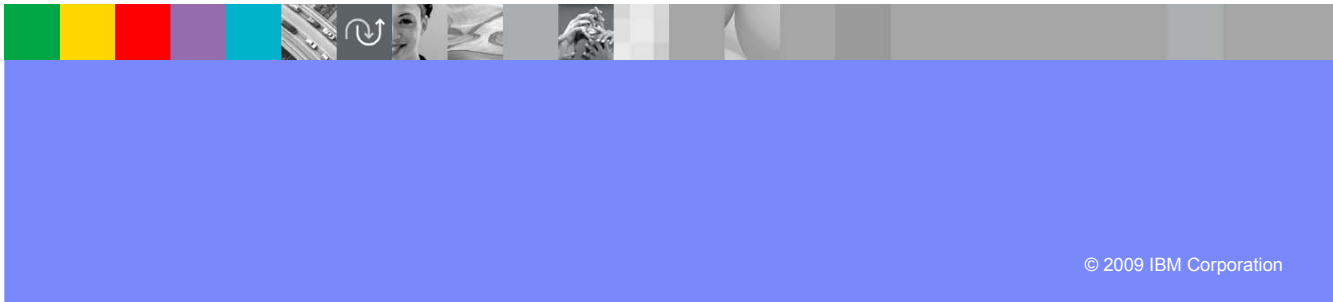
Complete Lab 8

- Identify the Lab Workbook and where to start (page #), where to stop (page #)

Session summary

This is the summary of the entire session.

An IBM Proof of Technology



A central hub for business-driven software quality

Delivering innovation into the hands of quality professionals

- Mitigate business risk and reduce cost by catching quality issues early**

 - ✓ **Stakeholder and team coordination**
Fewer meetings, less rework using a dynamic test plan
 - ✓ **Automated process workflow**
Reduce labor-intensive tasks, improve cycle time
 - ✓ **Upstream and downstream quality**
Enforce standards at coding and deployment

- Improve operational efficiency and accelerate time to market**

 - ✓ **Lab efficiency and asset utilization**
Save 30-40% testing time overall
 - ✓ **Test coverage optimization across environments**
95% confidence on optimal coverage
 - ✓ **Industry leading environment and lifecycle coverage**
System z®, System i®, SAP® and .Net

- Make confident decisions with effortless reporting**

 - ✓ **Ongoing process improvement and analytics**
Version history and trending within and across projects
 - ✓ **Proactive risk management and decision-making**
Automated, filtered and prioritized reporting
 - ✓ **Protect existing investments, deliver greater predictability**
Adopt successful deployment patterns, map to operational KPIs



Session summary

Rational Quality Manager:

- ▶ Mitigates business risk: Catch defects earlier and keep the team in synch with dynamic process and activity-based workflows
- ▶ Improves operational efficiency: Automate labor-intensive lifecycle processes and determine optimal plans addressing wide range of platforms and requirements
- ▶ Provides greater visibility of metrics: Make reliable decisions with constant access to prioritized metrics tailored for individuals and teams
- ▶ Protect existing investments and deliver greater predictability: Adopt successful deployment patterns and map to operational KPIs, platforms and requirements

Questions



Additional resources

- Find out more about Rational Quality Manager
<http://www.ibm.com/software/awdtools/rqm/>
- Download the Rational Quality Manager Trial – Q4
- Learning resources - Webcasts/Telcons/Podcasts.
 - ▶ [Quality in Action: The Rational Quality Management v8.0 Portfolio – The Shape of Things to Come](#), Hosted by the Global Rational User Group Community
 - ▶ [Quality in Action: Managing the Test Lab](#), Hosted by the Global Rational User Group Community
 - ▶ [Ensuring Lifecycle Quality through RQM integration capabilities](#)
- Blog with us [Rational Quality Manager Blog](#) & [Rational Tester Blog](#)
- Facebook. [Rational Quality Manager](#)
- Videos and quick demos (IBM TV, YouTube)
 - ▶ [Rational Quality Manager Preview](#)
 - ▶ [Star East 2008: Taking a holistic approach to quality management](#)
 - ▶ [Next Generation Requirements-driven Software Quality](#)
 - ▶ [R-Heroes Episode 5: QM – Put to the Test](#)
 - ▶ [Rational Quality Manager in Three Minutes](#)





Thank You

We appreciate your feedback.
Please fill out the survey form in order
to improve this educational event.



© Copyright IBM Corporation 2009. All rights reserved.

The information contained in these materials is provided for informational purposes only, and is provided AS IS without warranty of any kind, express or implied. IBM shall not be responsible for any damages arising out of the use of, or otherwise related to, these materials. Nothing contained in these materials is intended to, nor shall have the effect of, creating any warranties or representations from IBM or its suppliers or licensors, or altering the terms and conditions of the applicable license agreement governing the use of IBM software. References in these materials to IBM products, programs, or services do not imply that they will be available in all countries in which IBM operates. This information is based on current IBM product plans and strategy, which are subject to change by IBM without notice. Product release dates and/or capabilities referenced in these materials may change at any time at IBM's sole discretion based on market opportunities or other factors, and are not intended to be a commitment to future product or feature availability in any way.

IBM, the IBM logo, and other IBM products and services are trademarks of the International Business Machines Corporation, in the United States, other countries or both. Other company, product, or service names may be trademarks or service marks of others.



Created for **TechWorks**

