

IBM.

IBM Software

Innovate2011

The Premier Event for Software and Systems Innovation



Software. Everywhere.

19- July, Sydney, Australia

21- July, Melbourne, Australia

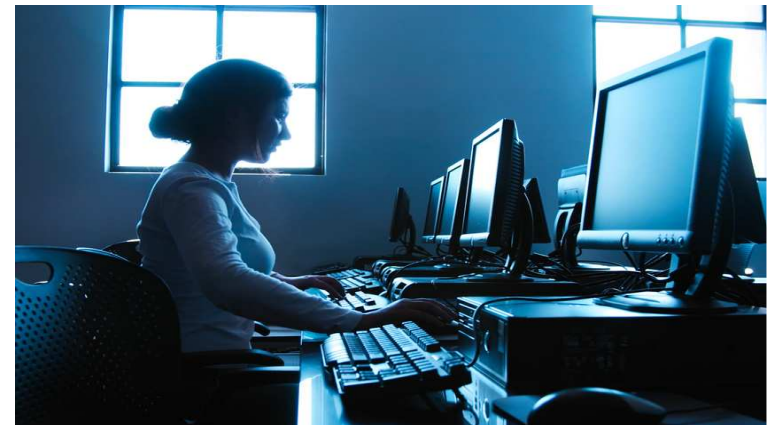


- The need for WebSphere Automation
- Overview of Build Forge and RAFW
- Demonstration
 - Building a Build Forge Project
 - WebSphere Installation
 - WebSphere Configuration
 - WebSphere Deployment
- Summary



Key Challenges Around Managing WebSphere Deployments and Environments

- Existing admin/deployment teams unable to scale with expanding application portfolios
- Largely manual, time consuming and labor intensive administration and deployments
- Configuration errors and defects that are frequent and difficult to both find and fix
- Increasing compliance mandates and manual compliance processes
- Lack of a disaster recovery option / plan



Factors that Effect WebSphere Deployments and Admin Today



Best Practices for WebSphere Administration

- There are many Best Practice procedures recommended by WebSphere but not implemented within the product
 - Backup current version of application before updating with new build
 - Use source control to manage & control WebSphere configuration settings
 - Embed build id in J2EE EAR file Manifest.mf file as it is built
 - Fall back to previous version of the application if the update fails or is unacceptable
 - Store a record of who updates the application and when (and why)

- Combination of Build Forge and Rational Automation Framework for WebSphere can automate these Best Practices to ensure that they are guaranteed to be executed



IBM Rational Automation Framework

Build Forge

(Rational Automation Framework)

- Automates Tasks
- Scheduling
- Notifications
- Auditability
- Visibility
- Consolidation & Standardization
- Role-based Security



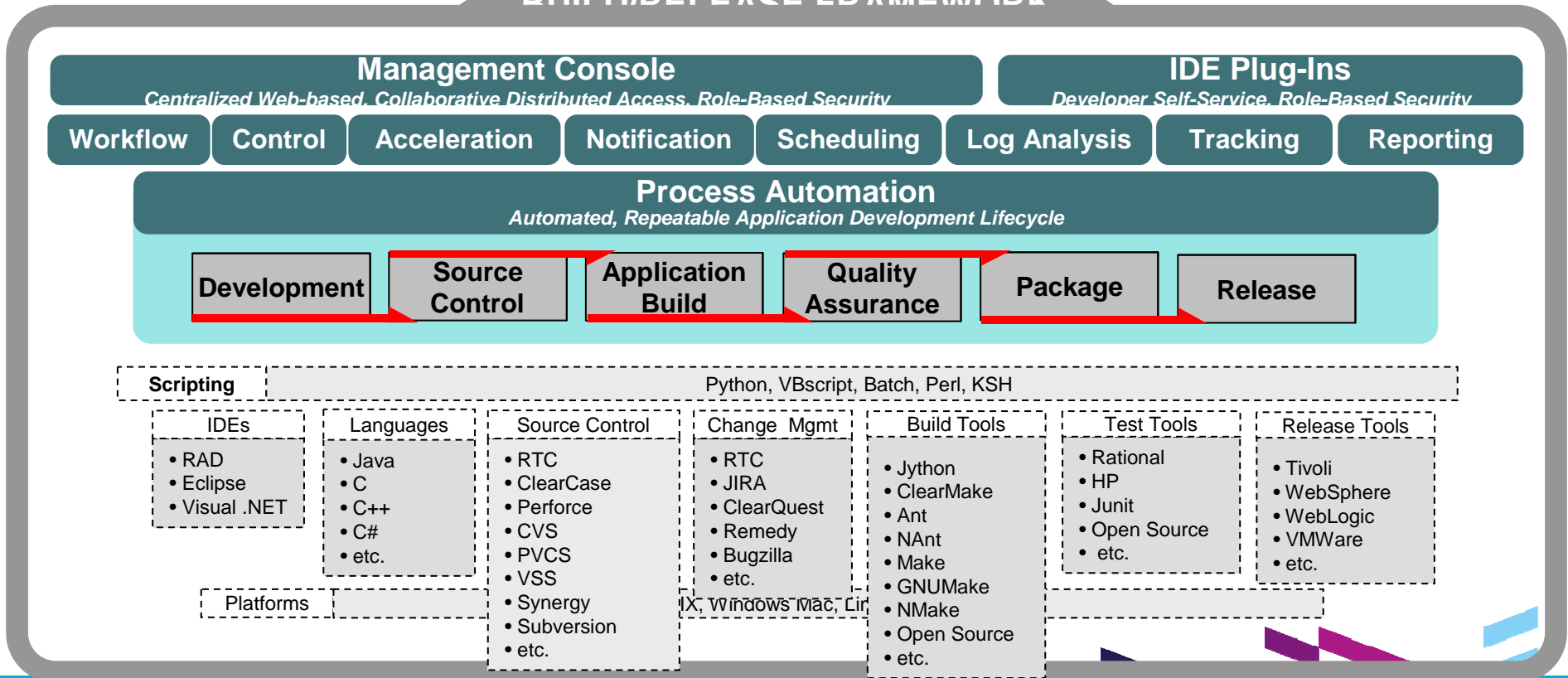
Rational Automation Framework for WebSphere

- Library of 900+ commonly used tasks to administer WAS, Portal, WVE, Process Server, ESB, and WSRR
- Environment Generation Wizard
- Predefined Automation Library elements

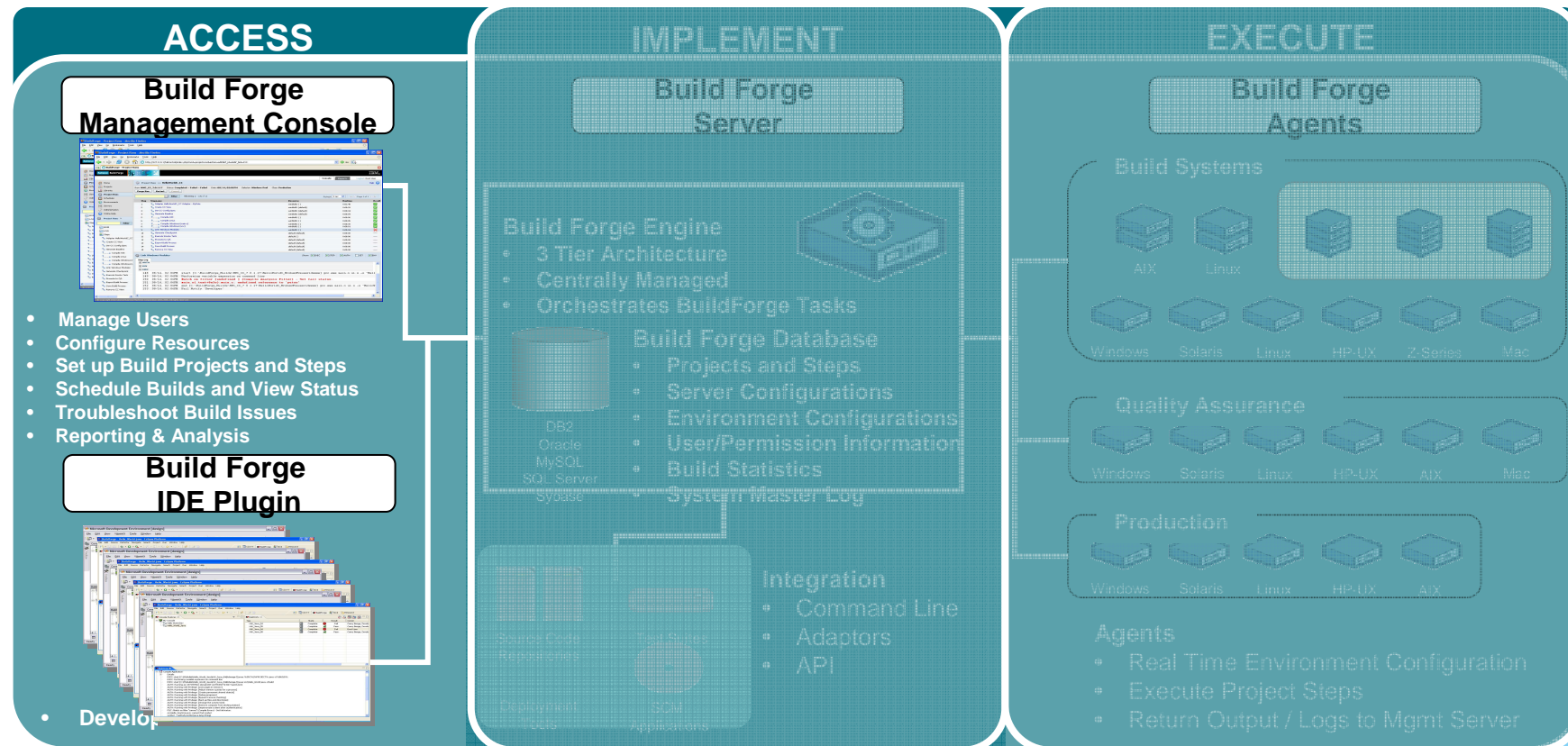


IBM Rational Build Forge

RIII N/DEI EASE ED AMEWODK



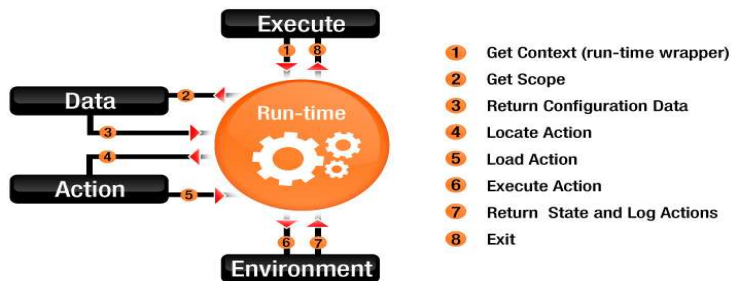
How it Works



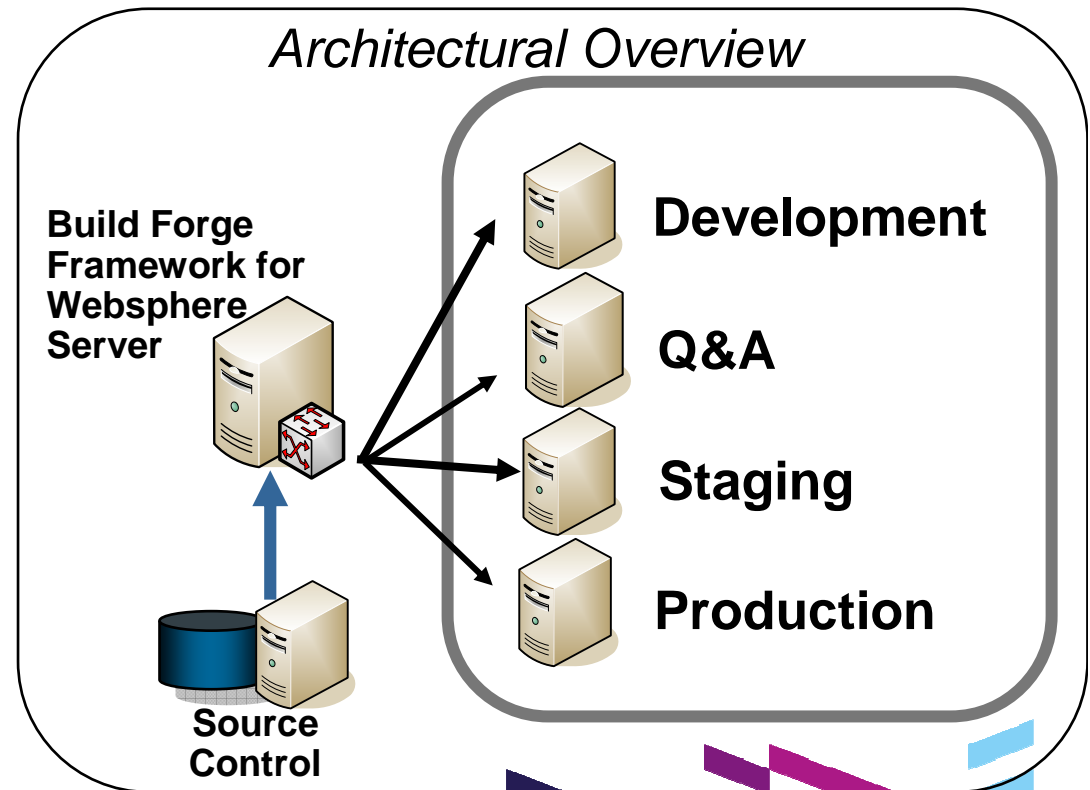
RAFW: Automation of WebSphere & Portal Admin

- Common use scenarios
 - Multi-cell WebSphere tool
 - Environment build out
 - Configuration capture
 - Application deployment

Run-time Overview



Architectural Overview



Achieving The Software Factory

- Software production as a “service”
- Standardize and reuse across teams
- Remove obstacles to distributed development

Time-to-Market Advantages

- Remove the software production bottlenecks
- Automate the assembly process
- Remove manual handoffs



Visibility, Security, and Auditing

- Avoid the dreaded failed application audit
- Get audit control and traceability
- Secure the build environment

Pushing the Quality Agenda Upstream

- Hold developers to a higher level of quality
- Identify & resolve quality issues faster
- Enable agile development



The Value of RAFW

Reduce Maintenance Time

- Minimize deployment/environment build time
- Build Environments in hours not days
- Deploy code in minutes not hours

Gaining Control of your Environment

- Eliminate Configuration drift problem
- Enforce Standards Across the Enterprise
- Put Configuration under Change Control



Repeatability & Consistency

- Rebuild environments consistently
- Reliable and Repeatable Disaster Recovery
- Eliminate Human Errors

Reduce Costs

- Free staff up for strategic initiatives
- Reduce labor costs
- If Time = Money, Less time = More Money



Questions

