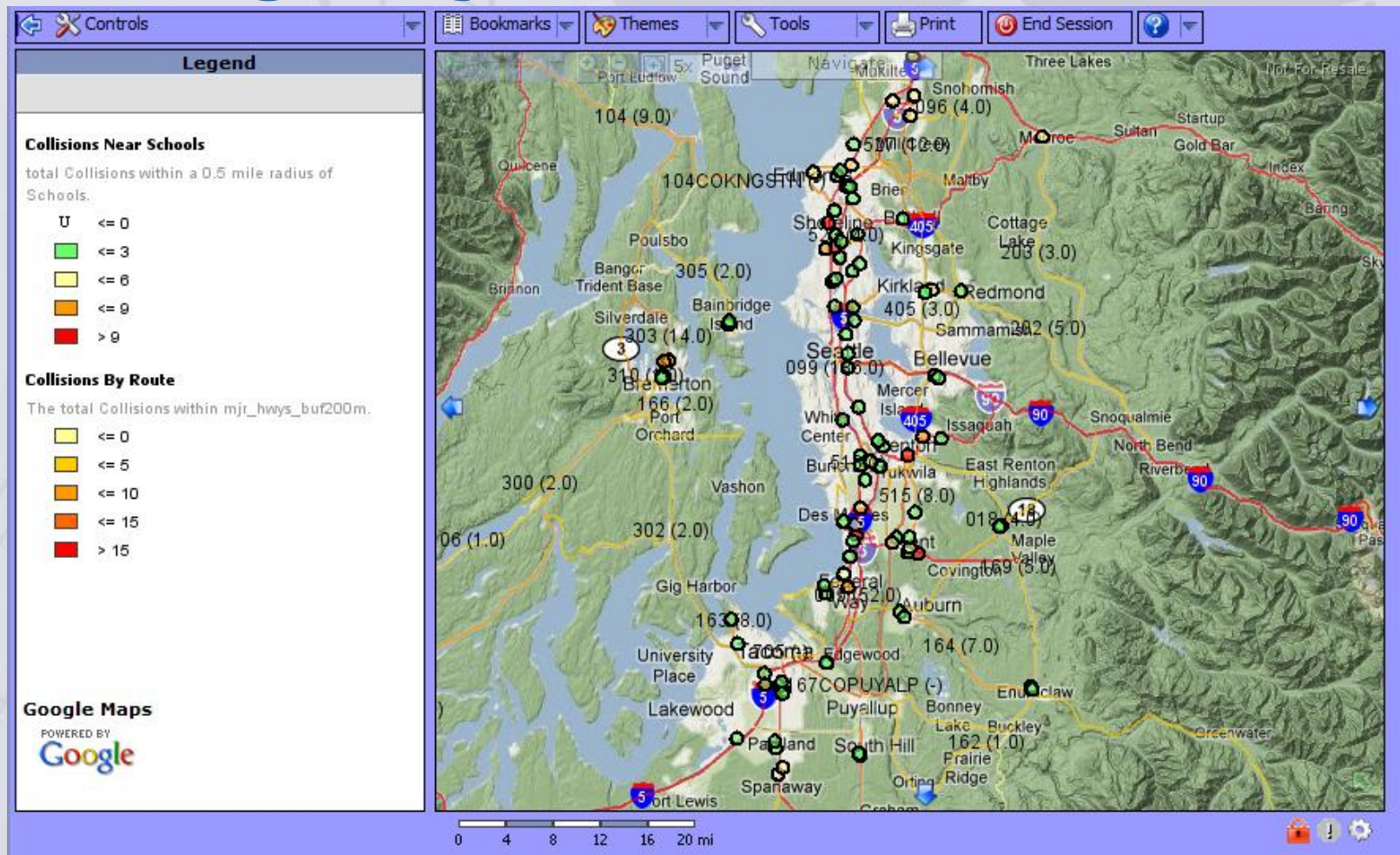


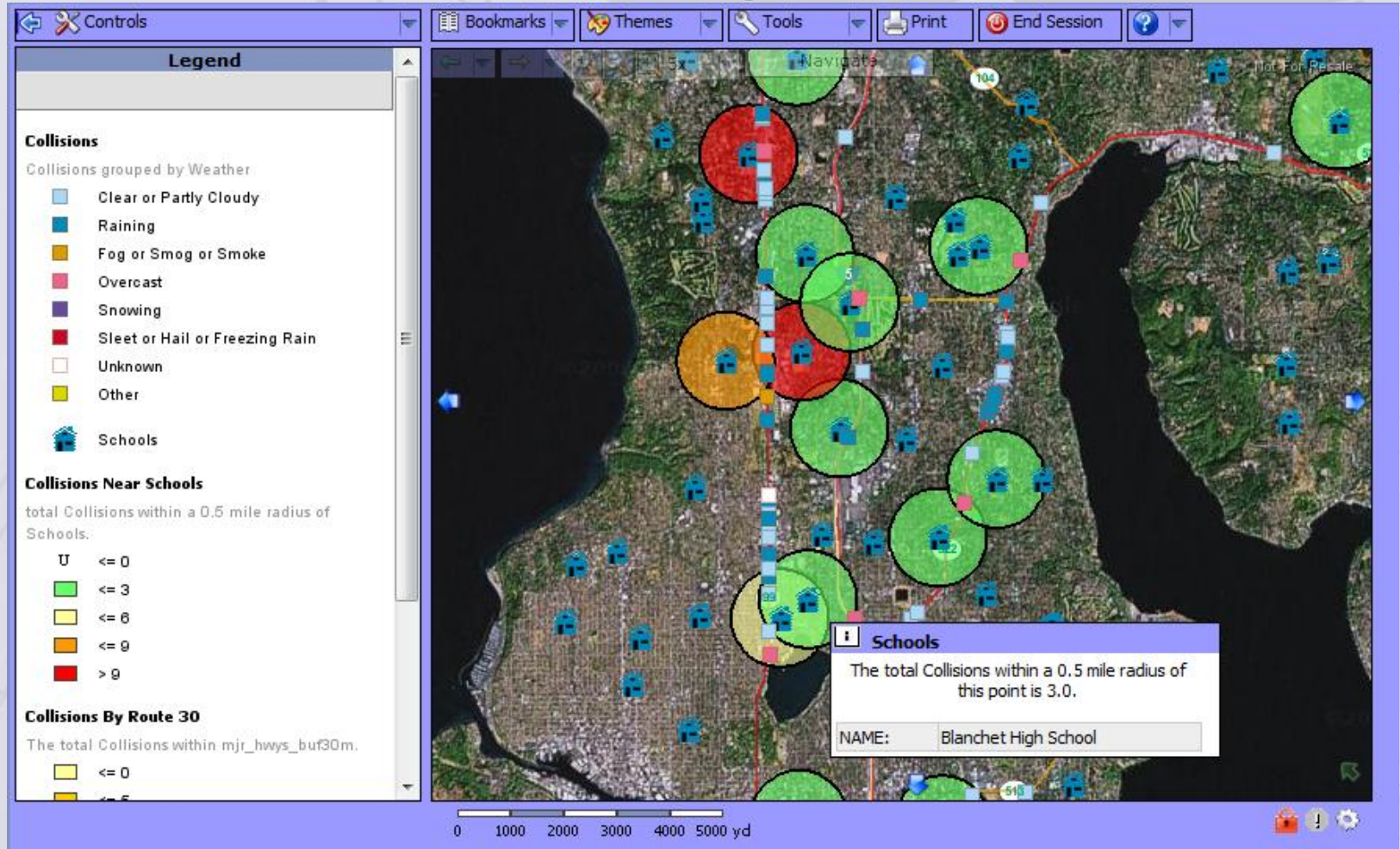
MAP INTELLIGENCE

Subject: Spatial analysis generated from
Cognos using Map Intelligence

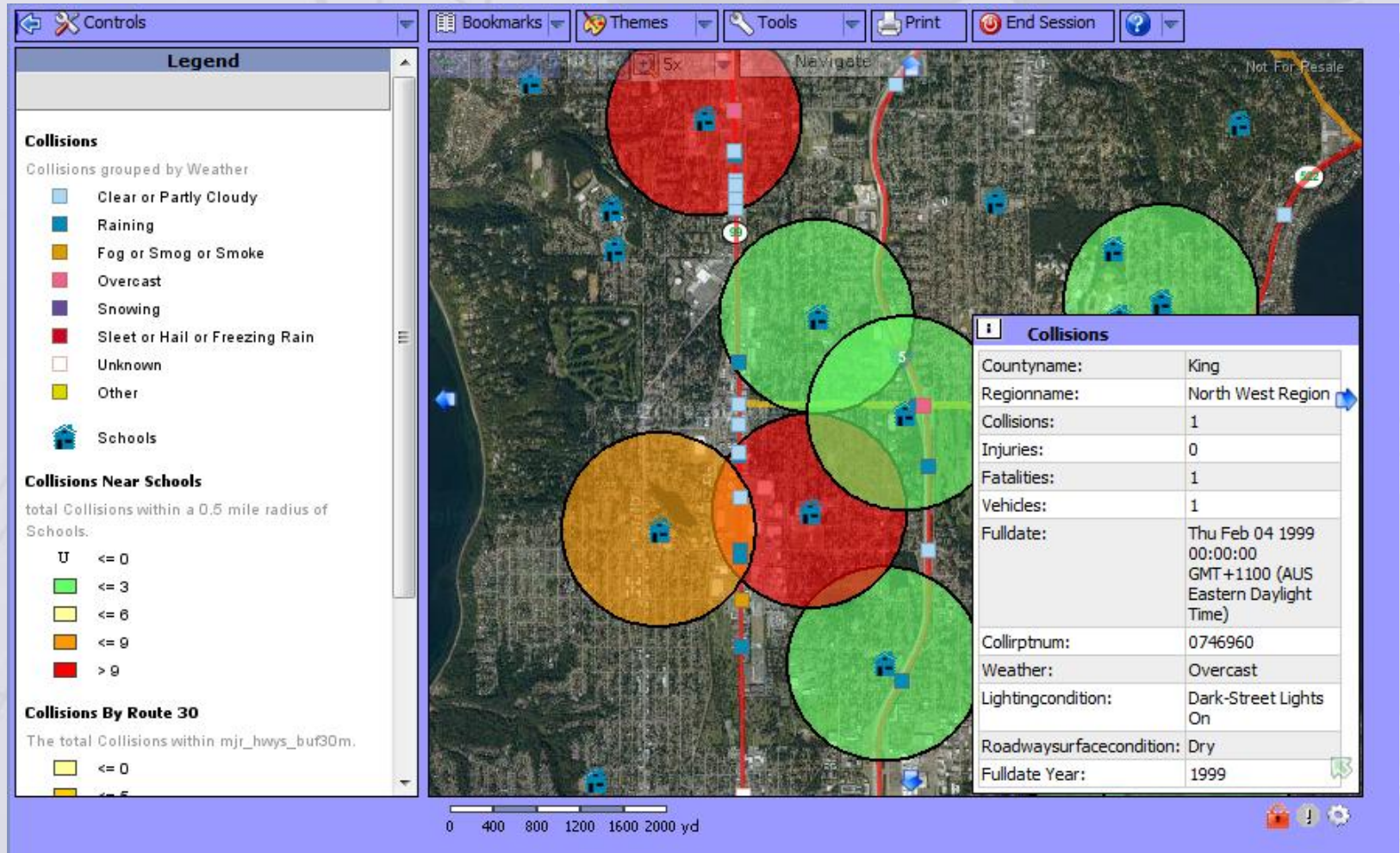
Zoomed into King County now showing 0.5 mile radius around schools and themed highways based on collisions



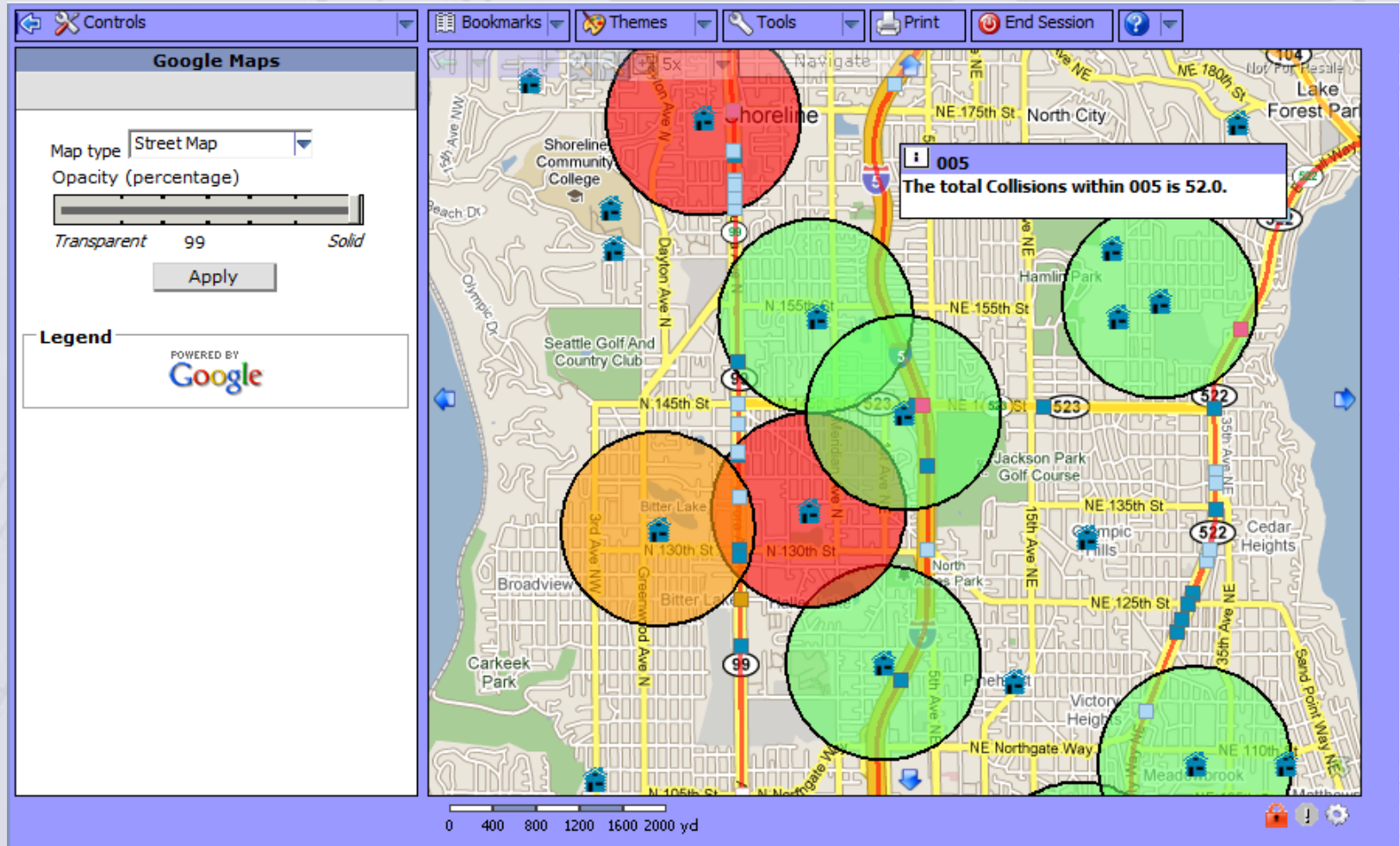
Zoomed into to hotspot area, 0.5 mile radius around schools, collision points, school pop-up and Google satellite view



Zoomed in closer, pop-up over Collision point, highways colour coded based on collisions



Background changed to Google street view, pop-up over highway layer



Zoomed in closer, Google Satellite view, themed highways visible and collision point pop-up

Legend

Collisions

Collisions grouped by Weather

- Clear or Partly Cloudy
- Raining
- Fog or Smog or Smoke
- Overcast
- Snowing
- Sleet or Hail or Freezing Rain
- Unknown
- Other

Collisions By Route 30

The total Collisions within mjr_hwys_bur30m.

- <= 0
- <= 5
- <= 10
- <= 15
- > 15

Google Maps
POWERED BY
Google

Collisions

Countname:	King
Regionname:	North West Region
Collisions:	1
Injuries:	1
Fatalities:	0
Vehicles:	1
Fulldate:	Fri Sep 03 1999 00:00:00 GMT+1000 (AUS Eastern Standard Time)
Colliptrnum:	0856564
Weather:	Clear or Partly Cloudy
Lightingcondition:	Daylight
Roadwaysurfacecondition:	Dry
Fulldate Year:	1999

0 100 200 300 400 500 yd

Collision point, active link activated to Washington Transport website with highway cam

Washington State Department of Transportation

News Search Contact WSDOT WSDOT Home

TRAFFIC & ROADS PROJECTS BUSINESS ENVIRONMENTAL MAPS & DATA

STATEWIDE TRAVELER INFORMATION

TRAFFIC & CAMERAS

- » State View (home)
- [Seattle Area](#)
- [Ferry Cameras](#)
- [Tacoma](#)
- [Hood Canal](#)
- [Olympia](#)
- [Centralia/Chehalis](#)
- [Vancouver](#)
- [Mount Vernon](#)
- [Bellingham](#)
- [Stanwood](#)
- [Monroe](#)
- [Canadian Border](#)
- [Spokane](#)
- [Wenatchee](#)

STATE TRAVEL INFO

- [Travel Alerts](#)
- [Mountain Passes](#)
- [Weather](#)
- [Construction](#)
- [Cross-state Travel Routes](#)
- [Winter Driving Tips](#)
- [Safety Rest Areas](#)
- [State Highway Map](#)
- [Interstate Exits](#)
- [Featured Services](#)

Click on for camera view or click on an area to zoom in

[Check the Weather](#)
[Check for Travel Alerts \(road conditions\)](#)
[Check the Mountain Passes](#)

Are you prepared For winter driving?

I-90/US 2 Interchange
I-90, I-90 / US-2

NE

Wed Oct 7, 2009 9:43 PM PDT

[Return to Map List](#)

Not sure which route number you need? View our [route description list](#).

Ways to Get Around

[Accessible Transportation](#) | [Aviation](#) | [Bicycle](#) | [Bus](#) | [Carpool](#) | [Compressed Work Week](#) | [Ferry](#)

Export to KML capability enabled and KMZ file generated ready for launching Google Earth

