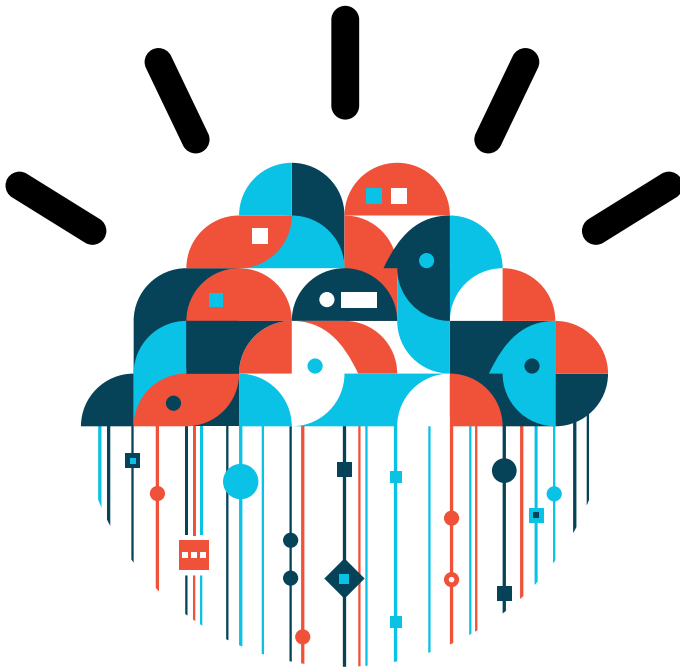


# IBM® Cloud Workshops: Choosing the right cloud for your business.



We invite you to:

Join us and find out how to leverage  
Cloud Computing.



## **Cloud Computing is on most business agendas, and yet how to leverage cloud computing remains unanswered for many. What cloud delivery model is right for your organisation? How do you define the optimum solution aligned with your business, and how do you implement it?**

This complimentary workshop is an opportunity to hear about best practice approaches to deploying cloud computing technologies across your organisation. You'll learn how to eliminate risks and deliver the optimum return from your cloud investment, and receive the information you need to decide whether cloud computing is the right step for your organisation at this point in time.

The adoption of cloud computing technology is not a one size fits all approach. There may be obvious questions when considering a public cloud service like security, latency and service levels. Transforming your infrastructure to leverage the benefits of cloud technologies via private or hybrid delivery models is something to pursue only once you have a clear understanding of the challenges.

Topics covered in this workshop will include:

- Attributes of cloud and the delivery models available.
- Cloud economics - the expected benefits and savings.
- How to identify target workloads for cloud that are aligned with your business priorities?
- How ready is your infrastructure for cloud; ie network, server, storage and standard architecture? Are the fundamentals in place and where are the obvious gaps?
- Understanding cloud deployment challenges and how to address and manage them.

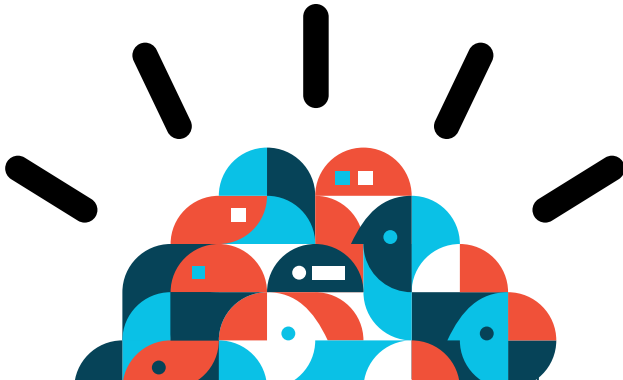
## Dates & Locations

City	Date	Venue	Register
<b>Sydney</b>	Tuesday 20 April 2010	Four Seasons, 199 George Street, Sydney	
<b>Canberra</b>	Wednesday 21 April 2010	The Boathouse by the lake, Grevillea Park, Menindee Drive, Barton, Canberra	
<b>Melbourne</b>	Thursday 22 April 2010	Eureka 89, 7 Riverside Quay, Southbank, Melbourne	

## Agenda

- 8:00am Arrival and Registration
- 8:30am Breakfast
- 9:00am Welcome and Workshop introduction
- 9:10am Cloud delivery models and benefits
- 9:30am Selecting priority workloads aligned with your business priorities
- 10:15am Infrastructure readiness for cloud
- 11:00am Question and Answer session
- 11:00am Close

**We hope you are able to attend this exclusive IBM Cloud Workshop and look forward to seeing you on the day.**





IMPORTANT PRIVACY INFORMATION: If you or your organisation would prefer not to receive further information on IBM products, please advise us on 132 426 (Australia) or 0800 444 714 (New Zealand). If you would like IBM Australia Limited to refrain from sending you commercial electronic messages you may send an unsubscribe message to [contact@au1.ibm.com](mailto:contact@au1.ibm.com). The sending of this message was authorised by IBM Australia Limited, and IBM Australia Limited can be contacted at [rlm@au1.ibm.com](mailto:rlm@au1.ibm.com) or on 132 426 (Australia) or 0800 801 800 (New Zealand). IBM may store data on international servers used by it.

TRADEMARKS: IBM, the IBM logos, [ibm.com](http://ibm.com), smarter planet and the planet icon are trademarks of IBM Corporation registered in many jurisdictions worldwide. Other company, product and services marks may be trademarks or services marks of others. A current list of IBM trademarks is available on the Web at "Copyright and trademark information" at [www.ibm.com/legal/copytrade.shtml](http://www.ibm.com/legal/copytrade.shtml). © Copyright IBM Australia Limited 2010. ABN 79 000 024 733. © Copyright IBM Corporation 2010. All Rights Reserved. GL\_11576

IBM reserves the right to alter the content or format of the agenda.