

Lotus technology solutions co-existing with your current infrastructure

Brendan Jansen
Senior IT Specialist
IBM Software Group

This session has three parts ...

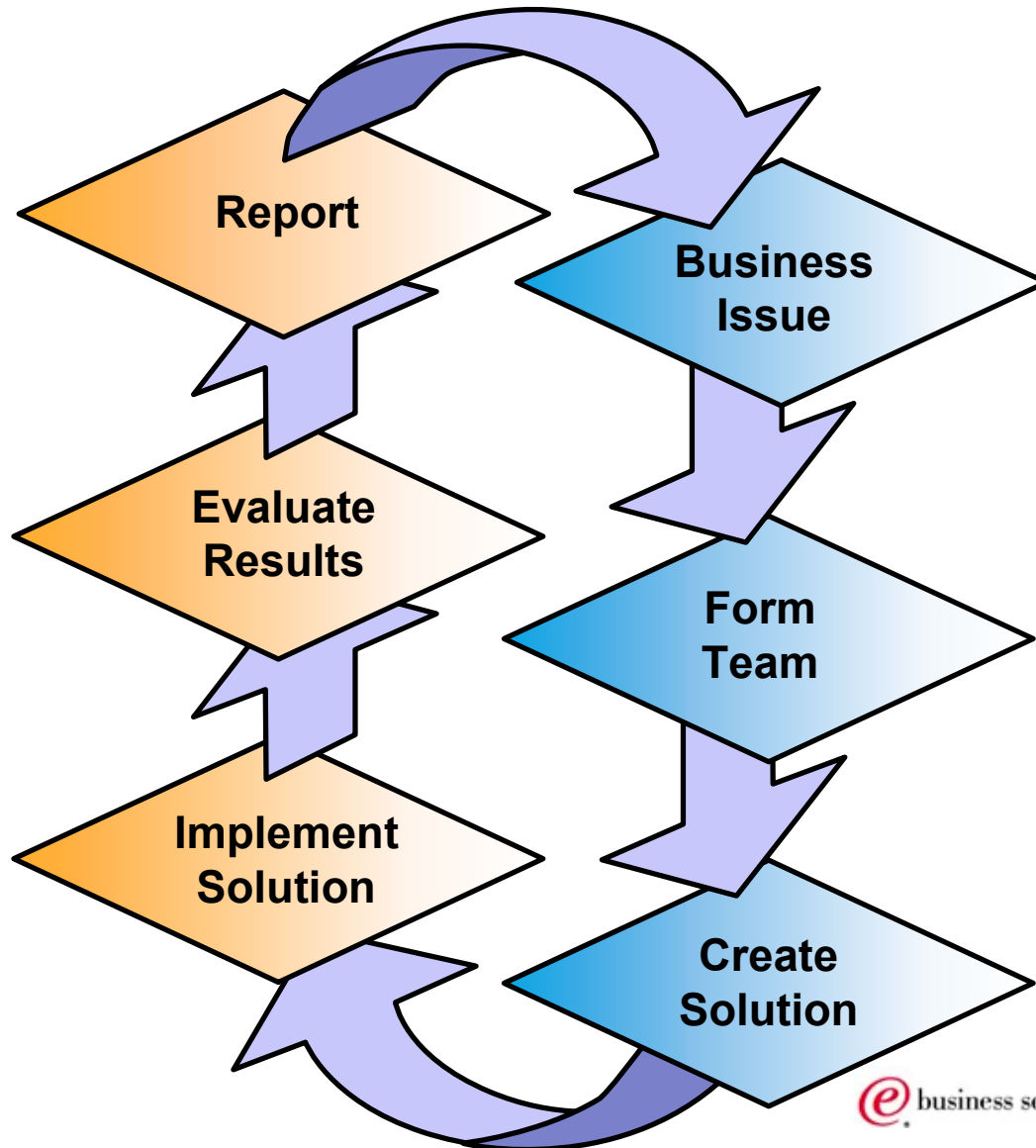
- **Part 1** - Introduction
 - What is collaboration ?
 - Why is it important ?
- **Part 2** - How Lotus Products integrate today
 - QuickPlace, Discovery Server, Domino.Doc
 - LearningSpace, Extended Search
- **Part 3** - The Future
 - Lotus Strategy
 - Web Services
 - NextGEN

Part 1 - What is Collaboration?

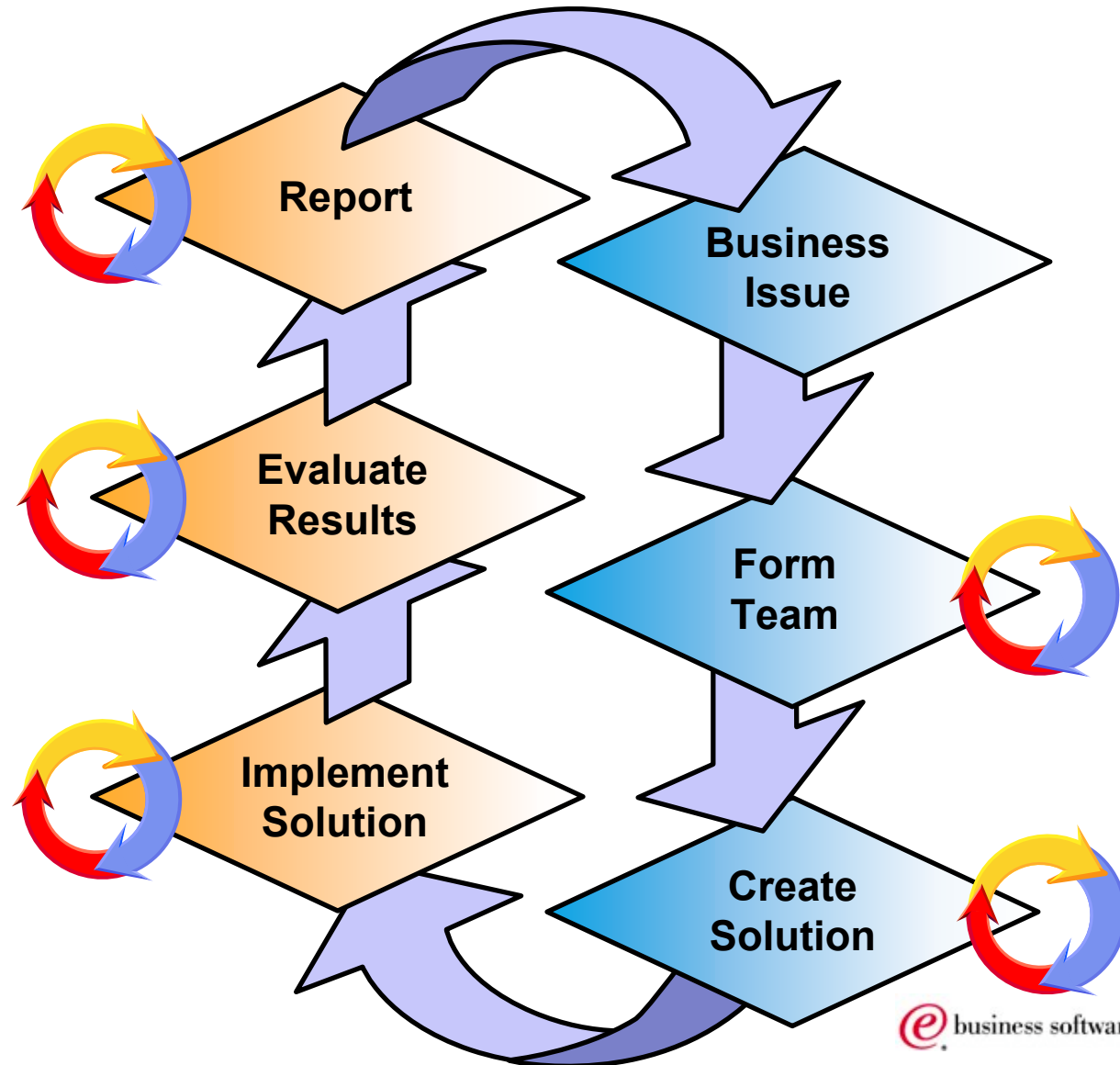
- People working together for a common purpose

- Some common collaborative application characteristics
 - ▶ Workspaces and Discussion to solve problems together
 - ▶ Awareness of people on the network
 - ▶ Real-time conversation between people
 - ▶ Virtual meetings for remote teams
 - ▶ Structured workflow to route information to experts
 - ▶ Document repository for up to date information
 - ▶ e-Learning to enable the value chain

Collaboration In The Enterprise

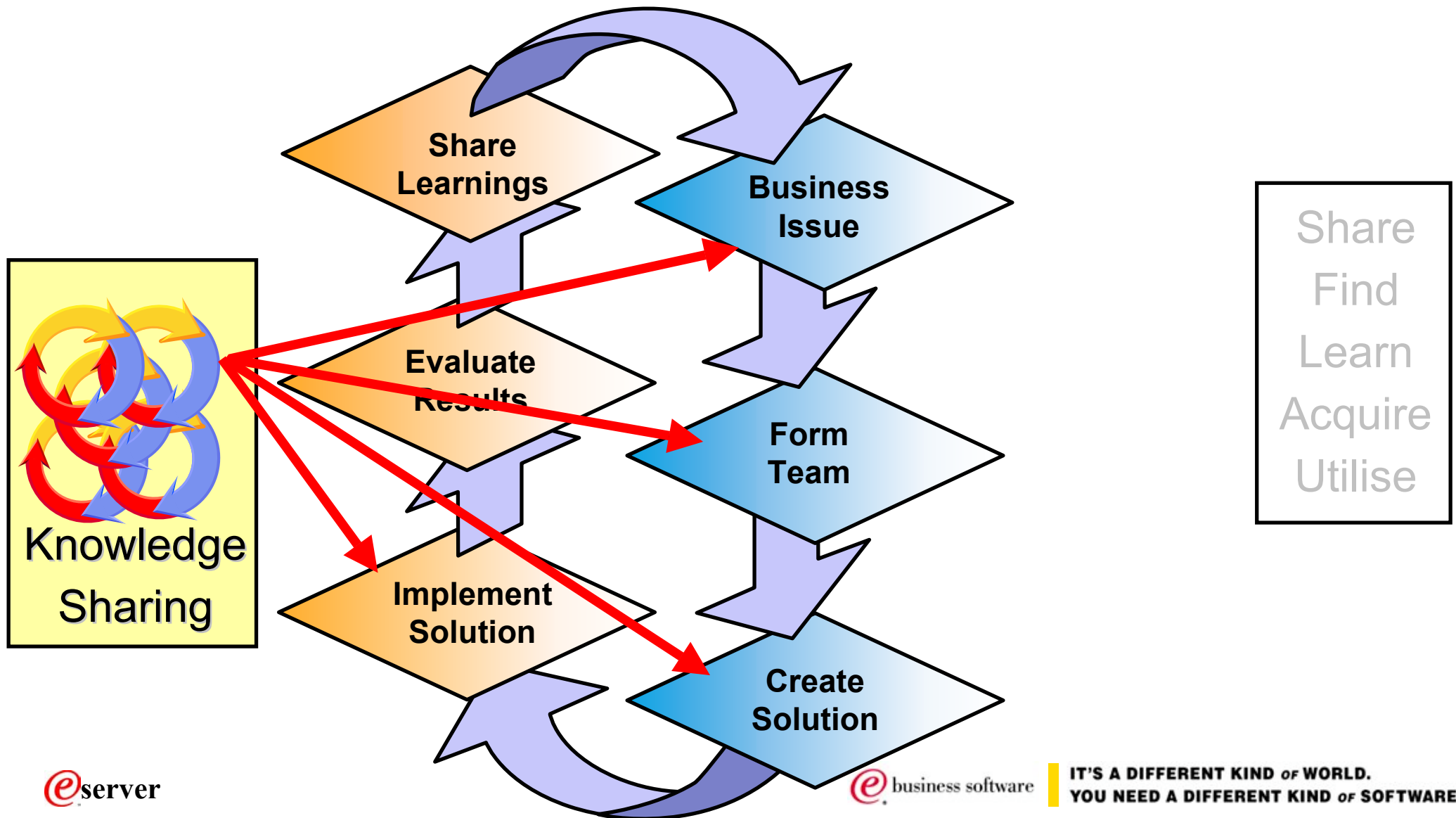


Collaboration In The Enterprise



- Build
- Capture
- Create
- Design
- Share
- Organise
- Task

Collaboration In The Enterprise



Collaborative applications

- Mail
- Real-time Interaction
- Teamware
- Workflow
- Document Management
- Knowledge Management

Typical Integration Points

- Directory
- Database
- Operating System
- Hardware Platform
- Protocols

Take our Directory for example ...

- (shaun ?)

Part 2 - Lotus Product Integration Examples

- QuickPlace
- Domino.Doc
- LearningSpace
- Extended Search
- Discovery Server

1. QuickPlace

- Directory Integration

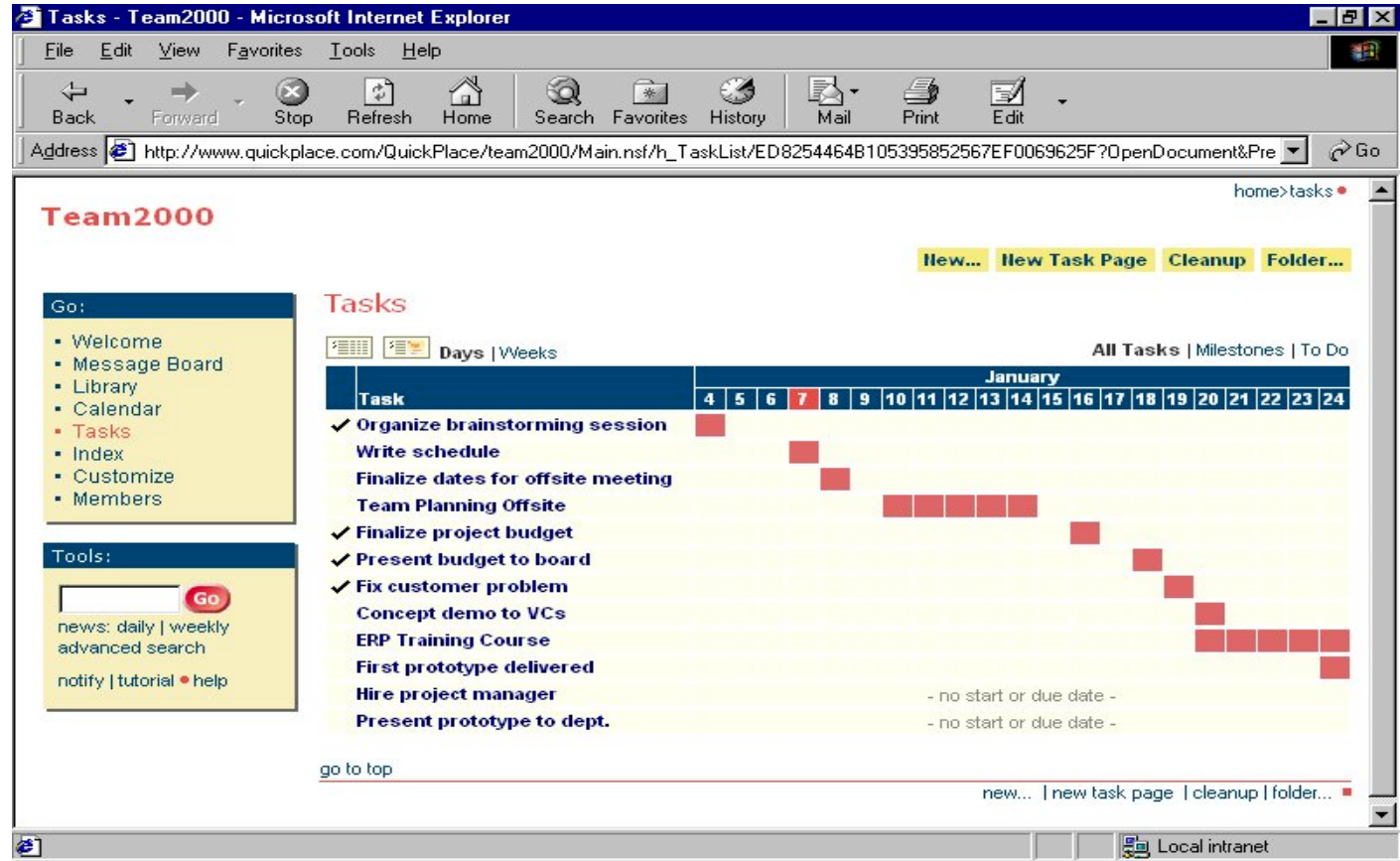
- Domino
- LDAP
- NT

- Platform Choices

- iSeries
- Solaris
- Windows NT/2000

- Option to run on IIS

- Existing Server
- Existing IIS Apps
- Windows HTTP Performance



QuickPlace User Directory

Change User Directory



User Directory. You can make it easier for QuickPlace managers and users by specifying a user directory from which QuickPlace members can be selected.

Directory. You can specify a directory from which QuickPlace managers can select members. (You can read more about directory types at the bottom of this page.) To specify a directory, select its type and enter its name below:

Type:

Name:

Advanced Settings. You can enter specific settings for your directory or leave them blank to make use of the default settings.

Port number:

Search base:

Narrow searches to the QuickPlace name.

Note: Specify the search base using the Distinguished Name format.

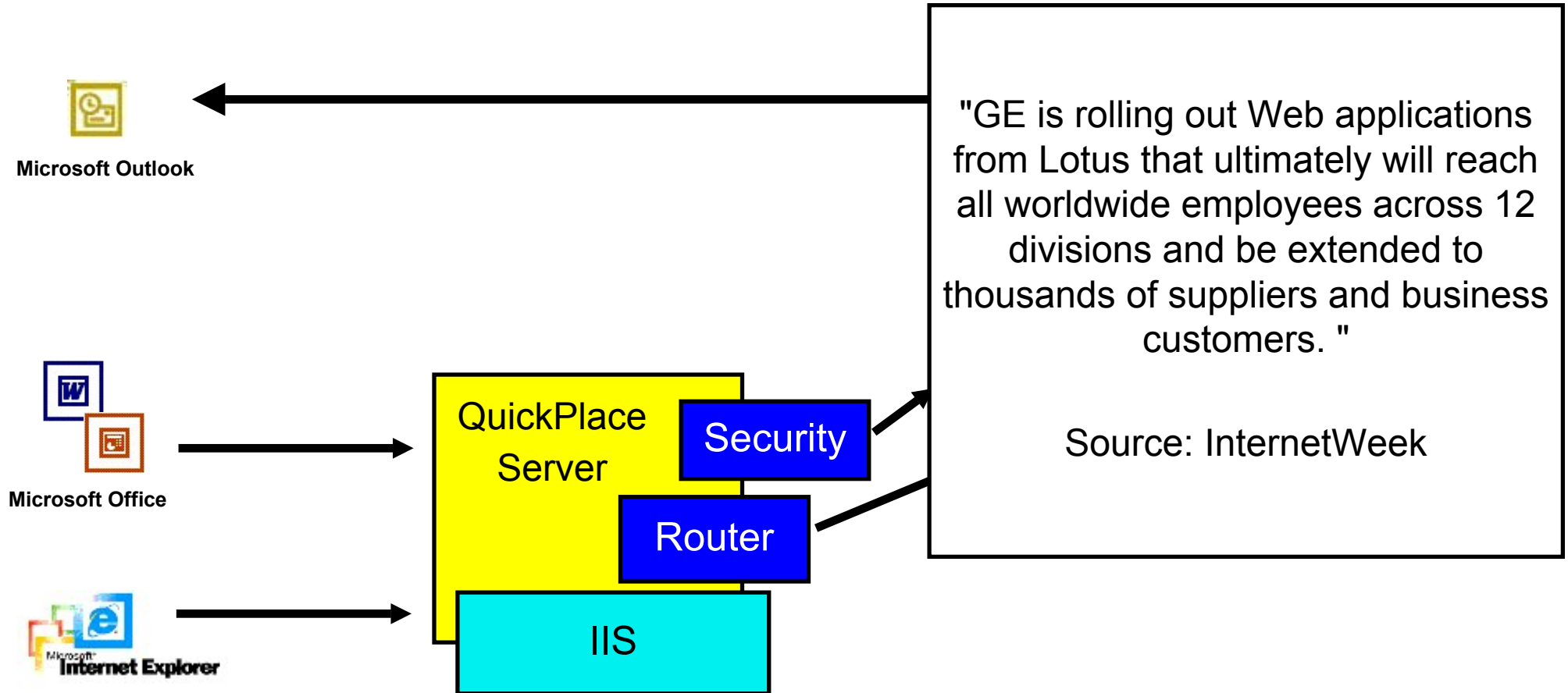
Check to use credentials specified below when searching the directory.

Username:

Password:

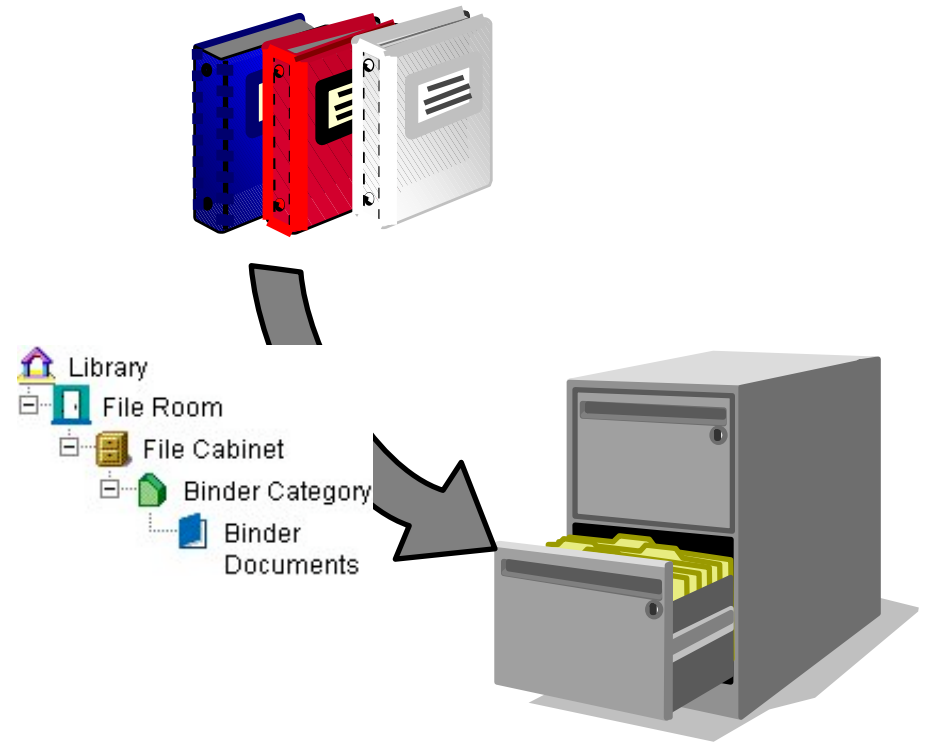
Note: If your LDAP directory allows anonymous access, leave these fields blank. Otherwise, if your LDAP directory requires credentials to access information, please enter the username and password for the QuickPlace server to use when making requests.

Example Customer Deployment



3. Domino.Doc

- Broad based Collaborative Document Management System
- Runs on Domino
 - Windows, Sun Solaris, AIX, OS/400, S/390
- Leverages
 - object store
 - replication (distribution)
 - scalability and flexibility
 - security services
 - development tools





Lotus Domino.Doc

Search for [Advanced Search](#)

[Getting Started](#) | |

- My HomePage**
- My Documents**
 - Life Cycle
 - Checked Out Items
 - Favorites
 - Recently Edited
 - Saved Searches

- Site Map**
 - Manufacturing
 - Corporate
 - Legal
 - Operations

Checked Out Items

Title	Date
Agreement # 345	12/07/2001
BrendanV Test	14/02/2002
Cameron's Repo	14/09/2001
Car Parking	30/01/2002
Claim against V	12/07/2001
EEO Policy	08/11/2001
FSM 1.1 Identify Segmentation Variables	07/05/2001
FSM 1.2 Complete Ex aternal Quantitve Research	17/04/2001

more

Description:
Document Type: Agreement
Date: 12/07/2001 6:58:44 AM
Author: Brendan Jansen/Lotus
File Cabinet: Legal Matters

Recently Edited

Title	Date
No Documents Found	

Life Cycle

Title	Status
ERG Report	Approved
Test Report	Approved
ABB Report	Pending Approval
Annual Leave	Pending Approval
Executive Summary	Pending Review
FSM 1 Develop & Manage Customer Segments	Pending Review
Market Analysis	Pending Review
Review Test 1	Pending Review

more

Favorites

Title	Type
Capital Items	Binder
Default Binder	Binder
Orica vs BHP	Binder
Purchasing Policy	Binder

3. Domino.Doc Integration

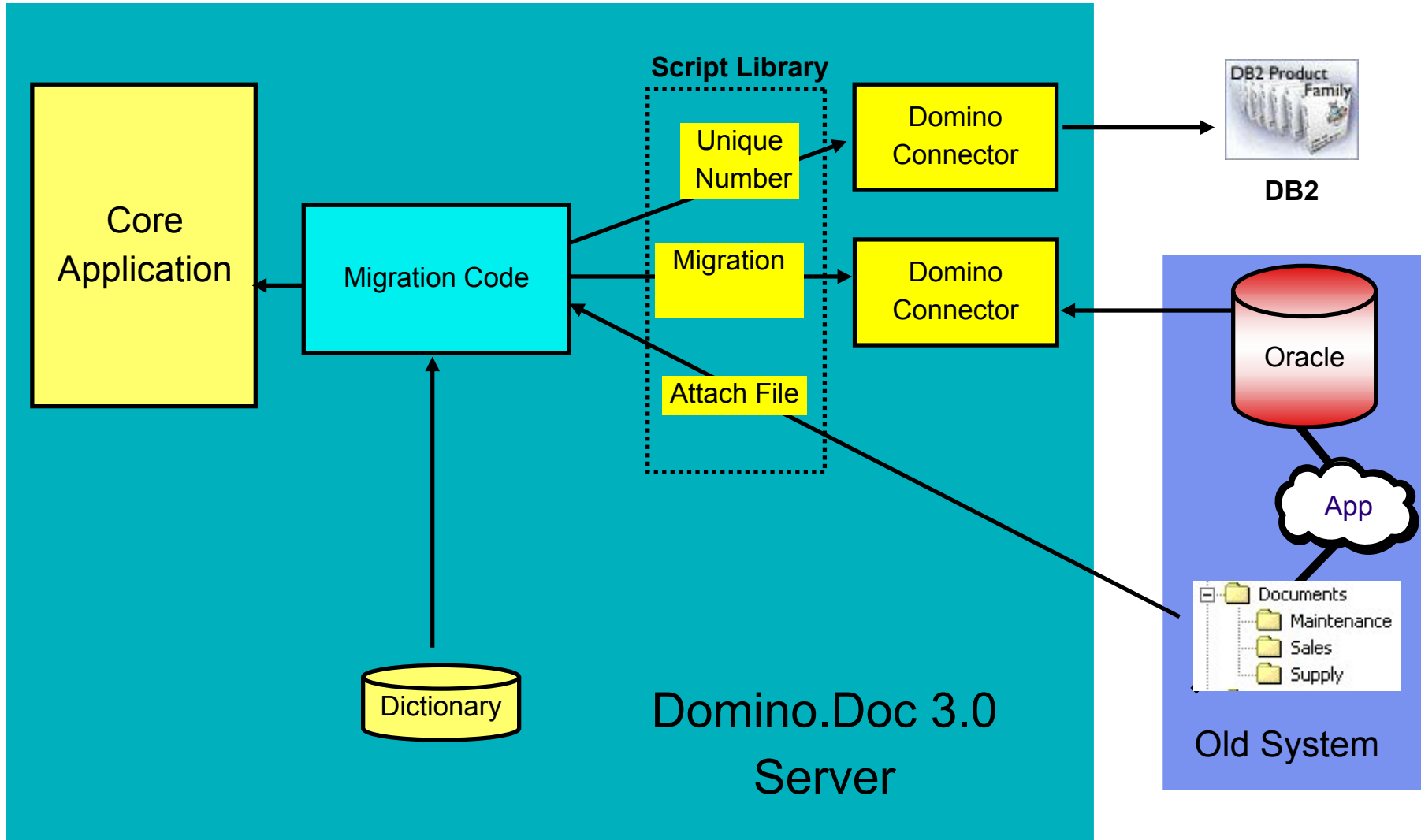
Requirement

- Integrate with other applications
- Integrate with data from other Applications
- Migration
- Numbering and Indexing
- eMail
- Additional Workflows

Capability

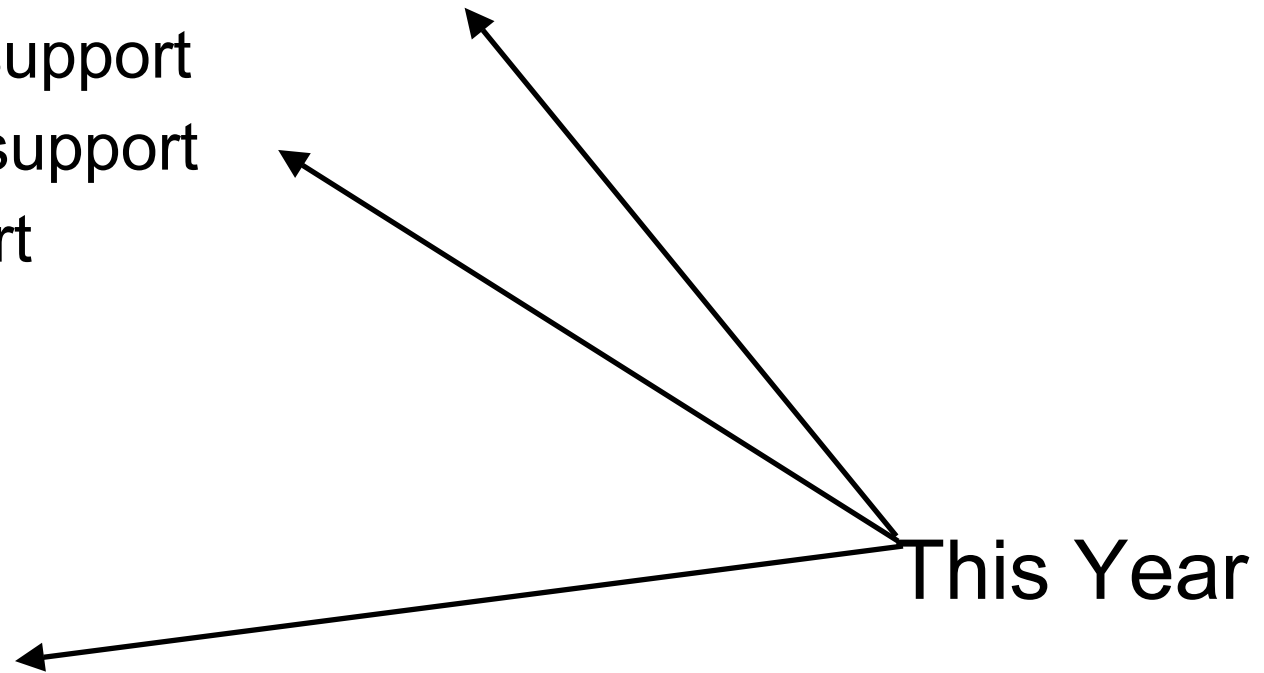
- Virtually anything you can do with Domino
- Open Document Management API (ODMA)
- Domino.Doc API
 - ▶ C++
 - ▶ VB
 - ▶ LotusScript
- Lotus Sametime
- Lotus Workflow

Example Customer Deployment

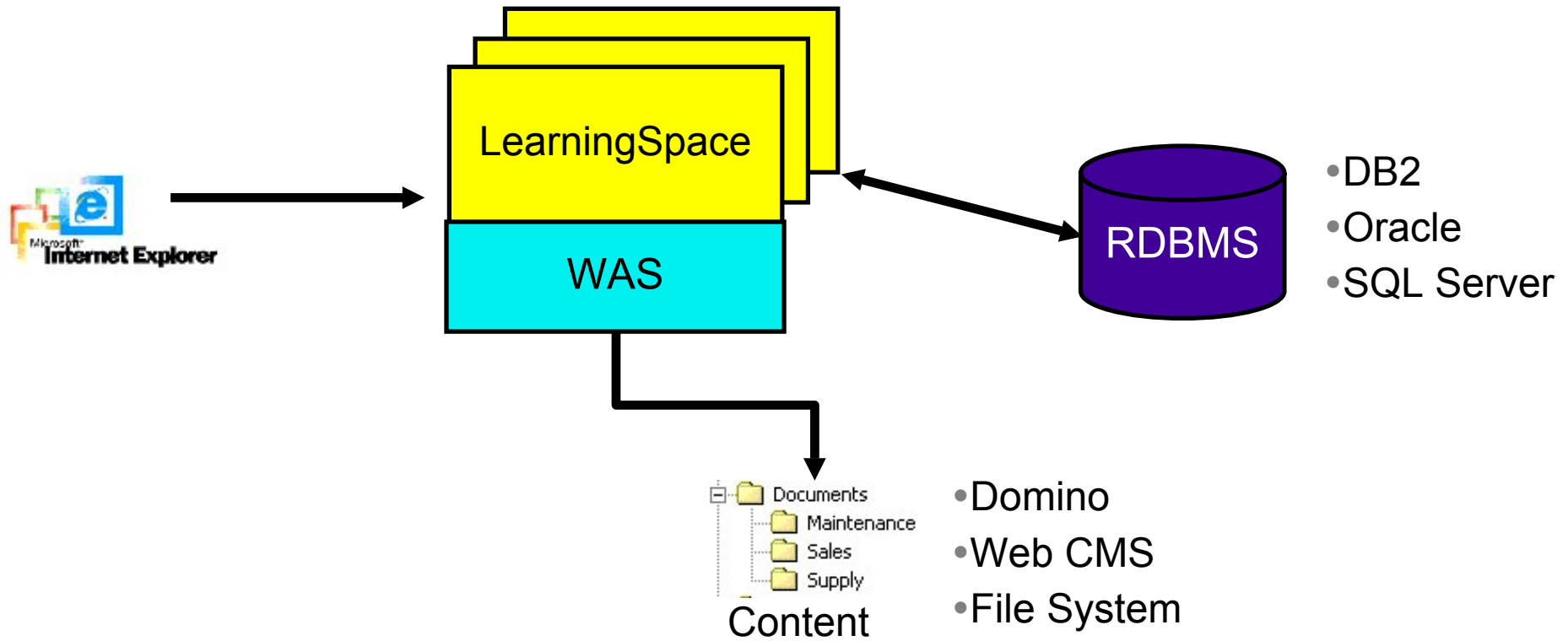


4. Lotus LearningSpace

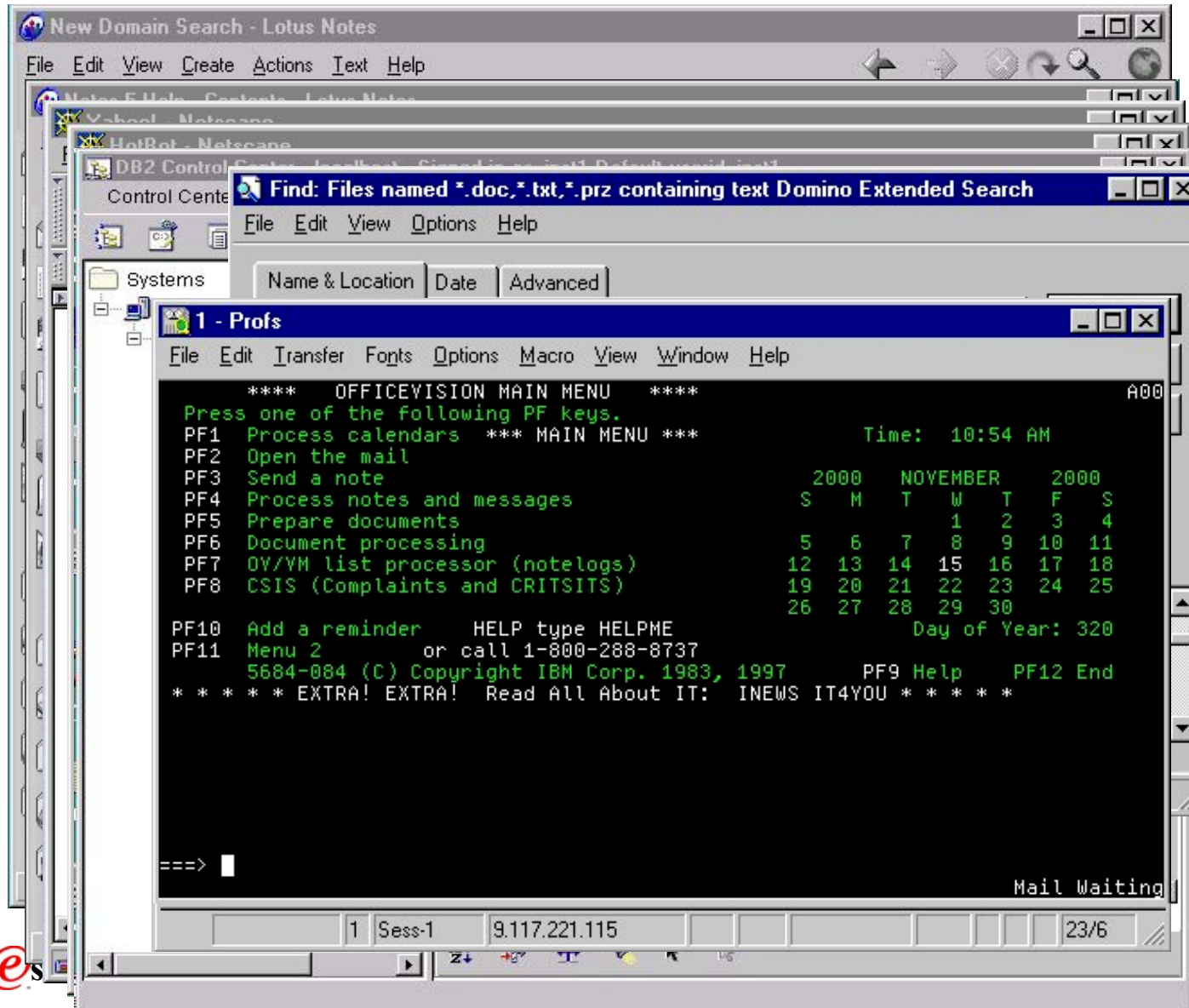
- Web based architecture
 - J2EE architecture running with Websphere
 - Web services/SOAP support
- Windows and Unix server support
- Relational database support
 - DB2
 - Oracle
 - SQL Server
- LDAP directory support
- iCal calendaring support
- SMTP mail support



Example Customer Deployment



5. IBM Extended Search



"This is hard because there are too many..."

- ✗ Interfaces to use
- ✗ Grammars to learn
- ✗ Results to interpret
- ✗ Sign-ON's

IT'S A DIFFERENT KIND OF WORLD.
YOU NEED A DIFFERENT KIND OF SOFTWARE.

Extended Search for Knowledge



"This is much easier"

- ✓ Single Interface
- ✓ One Grammar
- ✓ Consolidated Hitlist
- ✓ One Sign-on

Extended Search - Overview

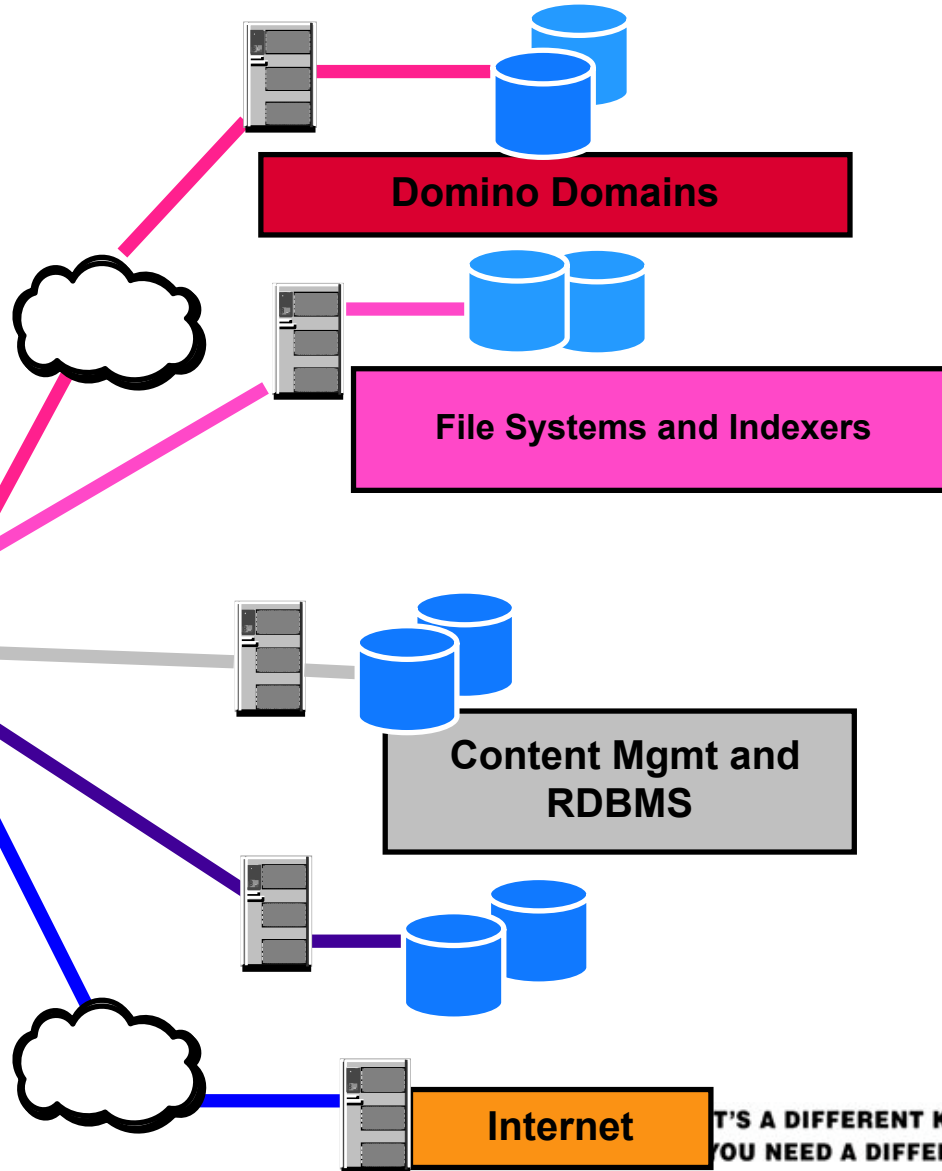
Parallel, Distributed Search

Single Client Interface

- Web browser
- Notes client



ES Server



Breadth of Extended Searching

- Lotus Databases/Products
- Document Mgmt Systems
- Microsoft Indexes
- Mail Systems
- Directories
- Relational Data
- File System Content
- World Wide Web
- Information Access Toolkit



Breadth of Extended Searching

■ Lotus Databases/Products

- Document Mgmt Systems
- Microsoft Indexes
- Mail Systems
- Directories
- Relational Data
- File System Content
- World Wide Web
- Information Access Toolkit

■ **Lotus.** software

- Domino 4.5 onwards
- R5 Domain Index
- Multiple Domino Domains
- Domino.Doc
- LEI, DEC's enabled apps
- Lotus Discovery Server *
- QuickPlace *
- Sametime *

Breadth of Extended Searching

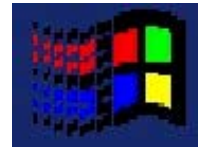
- Lotus Databases/Products
- Document Mgmt Systems
- Microsoft Indexes
- Mail Systems
- Directories
- Relational Data
- File System Content
- World Wide Web
- Information Access Toolkit



- Lotus Domino.Doc
 - ▶ Multiple libraries/file cabinets
- IBM EIP
 - ▶ VisualInfo
 - ▶ Digital Library
 - ▶ On Demand

Breadth of Extended Searching

- Lotus Databases/Products
- Document Mgmt Systems
- Microsoft Indexes
- Mail Systems
- Directories
- Relational Data
- File System Content
- World Wide Web
- Information Access Toolkit



- Index Server
 - ▶ HTML, text, MS Office documents.
- Site Server
 - ▶ Multiple catalogs
 - ▶ Access to Exchange

Breadth of Extended Searching

- Lotus Databases/Products
- Document Mgmt Systems
- Microsoft Indexes
- Mail Systems
- Directories
- Relational Data
- File System Content
- World Wide Web
- Information Access Toolkit



- Domino (Lotus)
- MS Exchange 5.5
 - ▶ (thru SiteServer)
- MS Exchange 2000

Breadth of Extended Searching

- Lotus Databases/Products
- Document Mgmt Systems
- Microsoft Indexes
- Mail Systems
- Directories
- Relational Data
- File System Content
- World Wide Web
- Information Access Toolkit



- LDAP
 - ▶ IBM SecureWay
 - ▶ Domino LDAP Server
 - ▶ Netscape Directory Server
 - ▶ Exchange LDAP Server

Breadth of Extended Searching

- Lotus Databases/Products
- Document Mgmt Systems
- Microsoft Indexes
- Mail Systems
- Directories
- Relational Data
- File System Content
- World Wide Web
- Information Access Toolkit

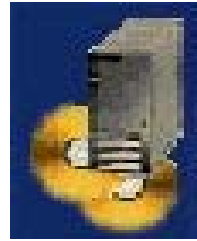
1	2	3
2		
3		
4		

- ODBC
 - ▶ IBM's DB2
 - ▶ Oracle 8i
 - ▶ Sybase
 - ▶ MS SQL Server
 - ▶ Microsoft Access
- Native SQL Access
 - ▶ MS SQL Server *
 - ▶ Microsoft Access *

* Future release

Breadth of Extended Searching

- Lotus Databases/Products
- Document Mgmt Systems
- Microsoft Indexes
- Mail Systems
- Directories
- Relational Data
- File System Content
- World Wide Web
- Information Access Toolkit



- Network accessible drives
- Optional sub-directory search
- Searches any file that is not compressed (not indexed)

Breadth of Extended Searching

- Lotus Databases/Products
- Document Mgmt Systems
- Microsoft Indexes
- Mail Systems
- Directories
- Relational Data
- File System Content
- World Wide Web
- Information Access Toolkit

- 18 preconfigured web sites:

ABCNews.com, AOL.com
Search, Alta Vista (Web),
Business Wire (Last 7
Days), CNN,
Canada.com, EuroSeek
Excite!, FAST Search,
GoTo.com,
Google!, HotBot - Web,
Lycos, NBCi, PR
Newswire (Last 72 Hours),
Web
Crawler, Yahoo News
Headline Search, Yahoo!



Breadth of Extended Searching

- Lotus Databases/Products
- Document Mgmt Systems
- Microsoft Indexes
- Mail Systems
- Directories
- Relational Data
- File System Content
- World Wide Web
- **Extended Search Link Toolkit**



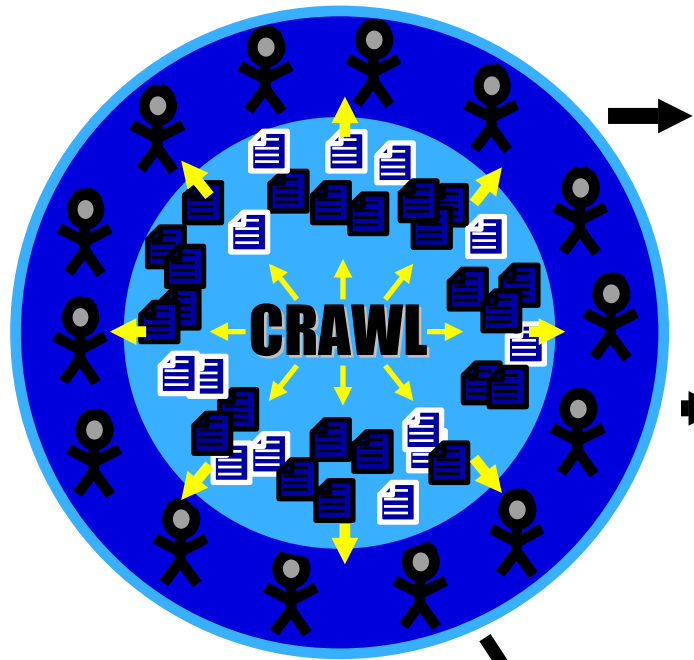
- Used to build your own Search link to...
 - ▶ Proprietary Databases
 - ▶ Commercial Content
- Atlantic Decisions
 - ▶ Verity Link

5. IBM Extended Search

- QuickPlace Search Link
 - ▶ Across application and server searches

- Web Services Extended Search support
 - ▶ Define and register ES search services to UDDI
 - ▶ Invoke XML defined services methods via SOAP

6. Discovery Server



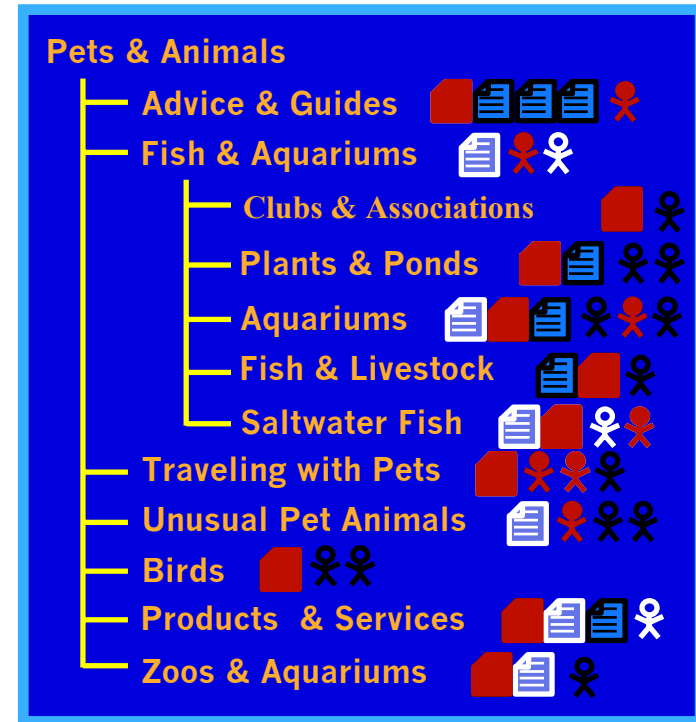
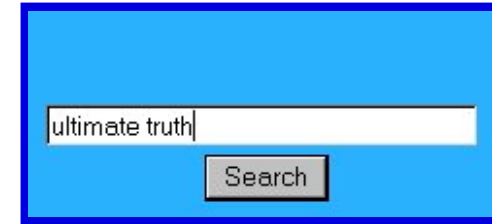
Keywords to Doc



- Docs to Topics
- Topics to Topics
- Place to Topics
- People to Topics



- Value of Doc to Topic
- Strength of Person to Topic



Discovery server produces the K-map

Lotus Discovery Server

Browse & Search Search Results Actions ?

Search: Everything About within this category GO

Category: Home > Technology > Internet

Browse:

- Research
- Development
- Support
- Maintenance
- Marketing
- Human Resources
- Manufacturing
- Site Operations

Documents (105)		Value	Author
Unable to establish phone connection	9	Jan Smith/IRIS	
Rocket Science: What's in a Word: A Critique of	9	Bob Wilcox/Lotus	
Displaying Notes Versions String	8	Steve Whitman/IRIS	
Dataware Technologies Acquires Sovereign Hill	3	Jan Smith/IRIS	
Unable to establish phone connection	3	Bob Wilcox/Lotus	
Rocket Science: What's in a Word: A Critique of	3	Steve Whitman/IRIS	
Displaying Notes Versions String	2	Jan Smith/IRIS	
Rocket Science: What's in a Word: A Critique of	2	Bob Wilcox/Lotus	
Dataware Technologies Acquires Sovereign Hill	1	Steve Whitman/IRIS	

People (3)		Affinity	Job Title
Dave Newitalic/Iris	9	Marketing Director	
Jeff Mitchell/Iris	9	Senior Developer	
Robert Norell/CAM/Lotu	8	Support Manager	

Places (0)		Contact
Corporate Info Place		Dave Newitalic/Iris
My Place		Jeff Mitchell/Iris
ReadyResponse Place		Robert Norell/CAM/Lotu

Discovery Server Spiders

Content Spiders

Domino
QuickPlace
Domino.Doc

File
Directory
(NT)

HTML/ Web

Directory Spiders

Domino
NAB

LDAP
v2 v3

E-mail Spiders

Domino
Mail

MS Exchange
(Beta)

Other Content

LDS Domino
Spider

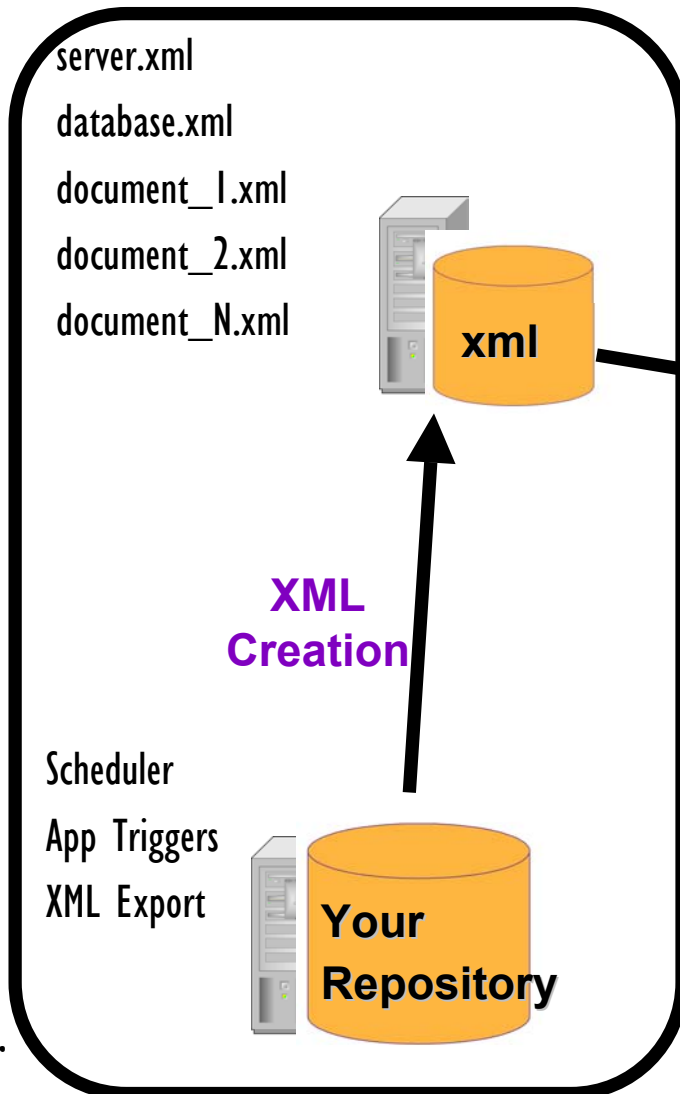
DECS Connectors

DS XML
Spider
(SDK)

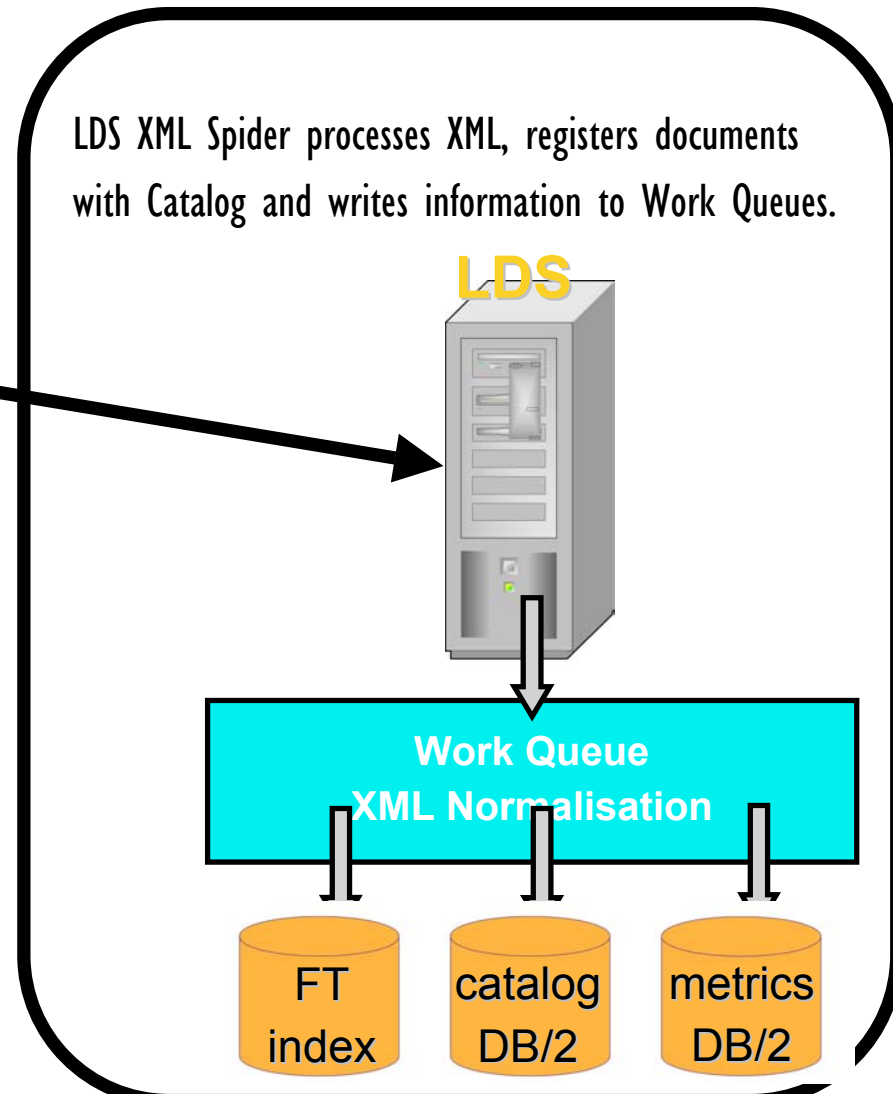
RDBMS / ERP

How to spider other content

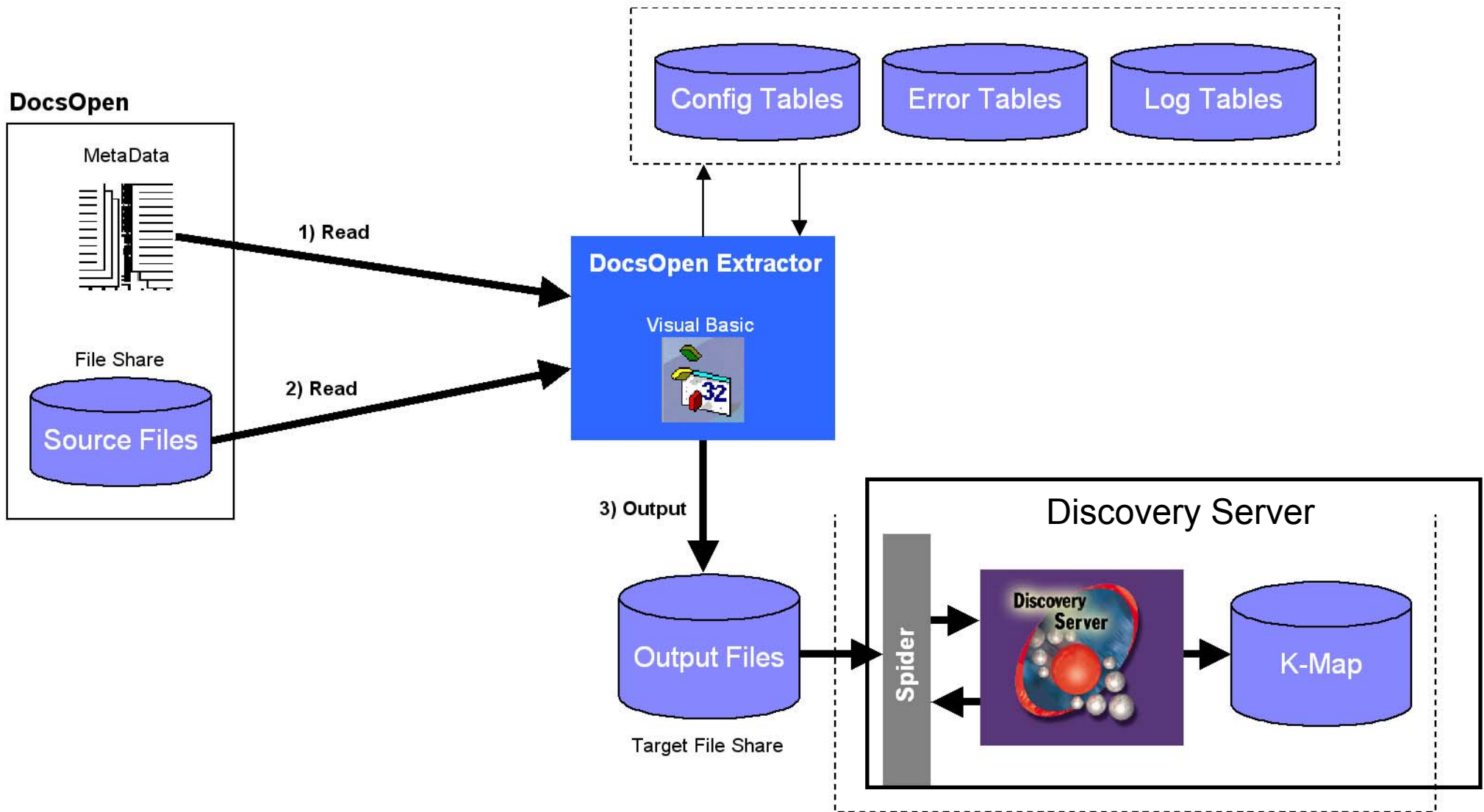
XML Created Externally



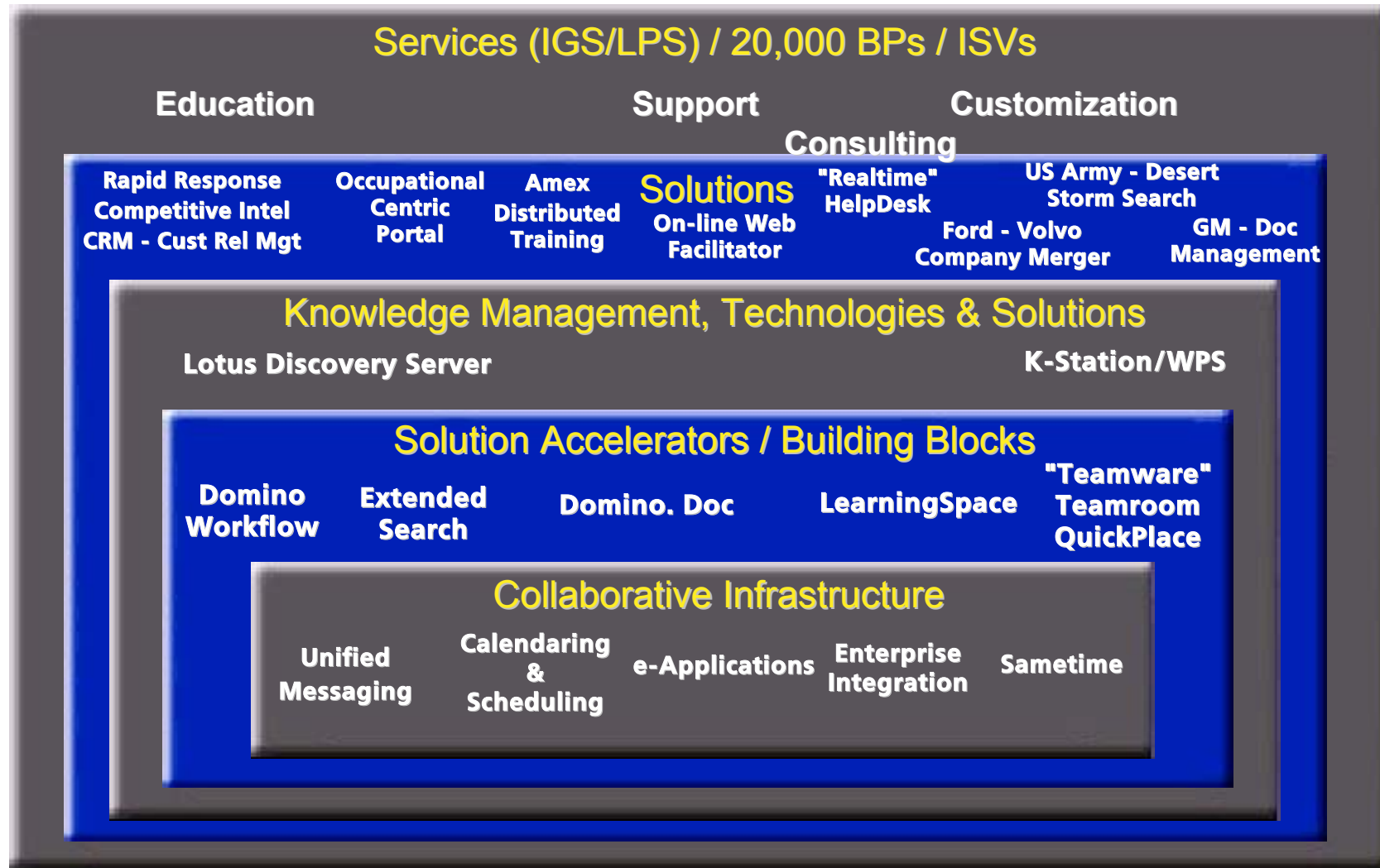
LDS Processes XML



An XML Spider Example



Lotus Framework



Part 3 - Technology Strategy

IBM Lotus is engaged in a managed evolution of existing products, from freestanding infrastructure applications to mix and match capabilities that add collaborative power to J2EE/multi-tier applications

Modularize products to
sustain leadership in the emerging
'contextual collaboration' era

Support current customer
investments while
providing a path
to new application models

Exploit **J2EE** and **Web services**
as technologies for
collaboration components

Standards Based Technologies

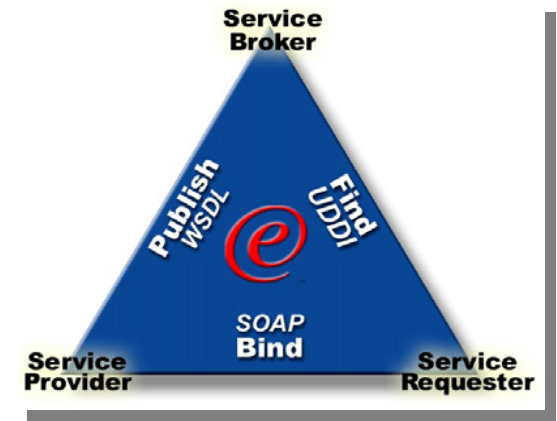
- J2EE

- ▶ Provides a complete set of services to components, handling many details of application behavior automatically
- ▶ Runs high-scale applications on multi-tier architectures
- ▶ Uses standardized, modular and reusable components (JSPs, servlets, EJBs)

- Web services

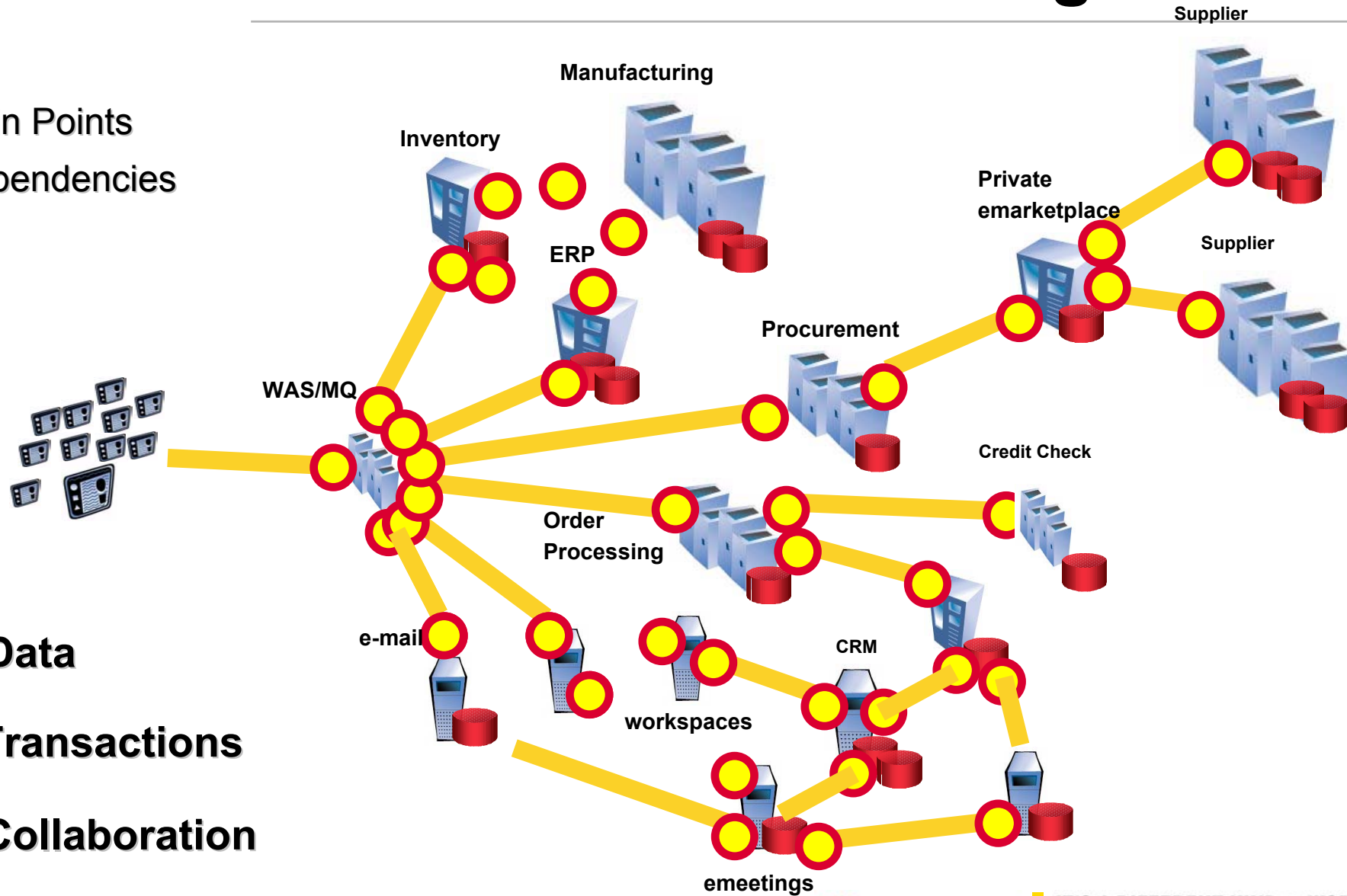
What are Web Services?

- A big step toward eliminating software islands
- Standards for connecting business processes...
 - ▶ XML
 - ▶ SOAP
 - ▶ WSDL
 - ▶ UDDI
- ...Used to create self-describing, modular functions
 - ▶ consumable by any entity with sufficient rights
 - ▶ process-to-process connection
 - ▶ across platforms and networks

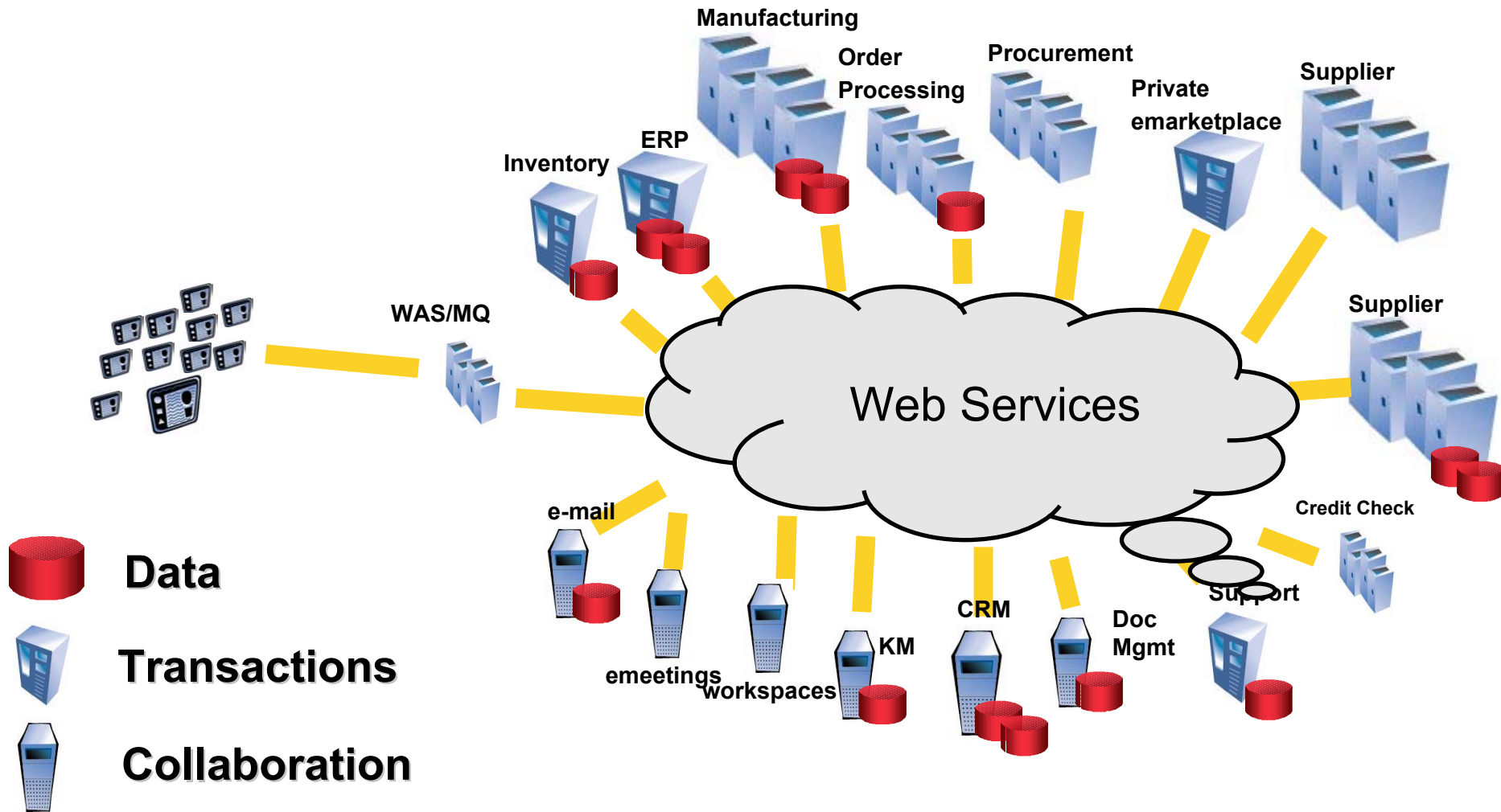


State of e-business Integration

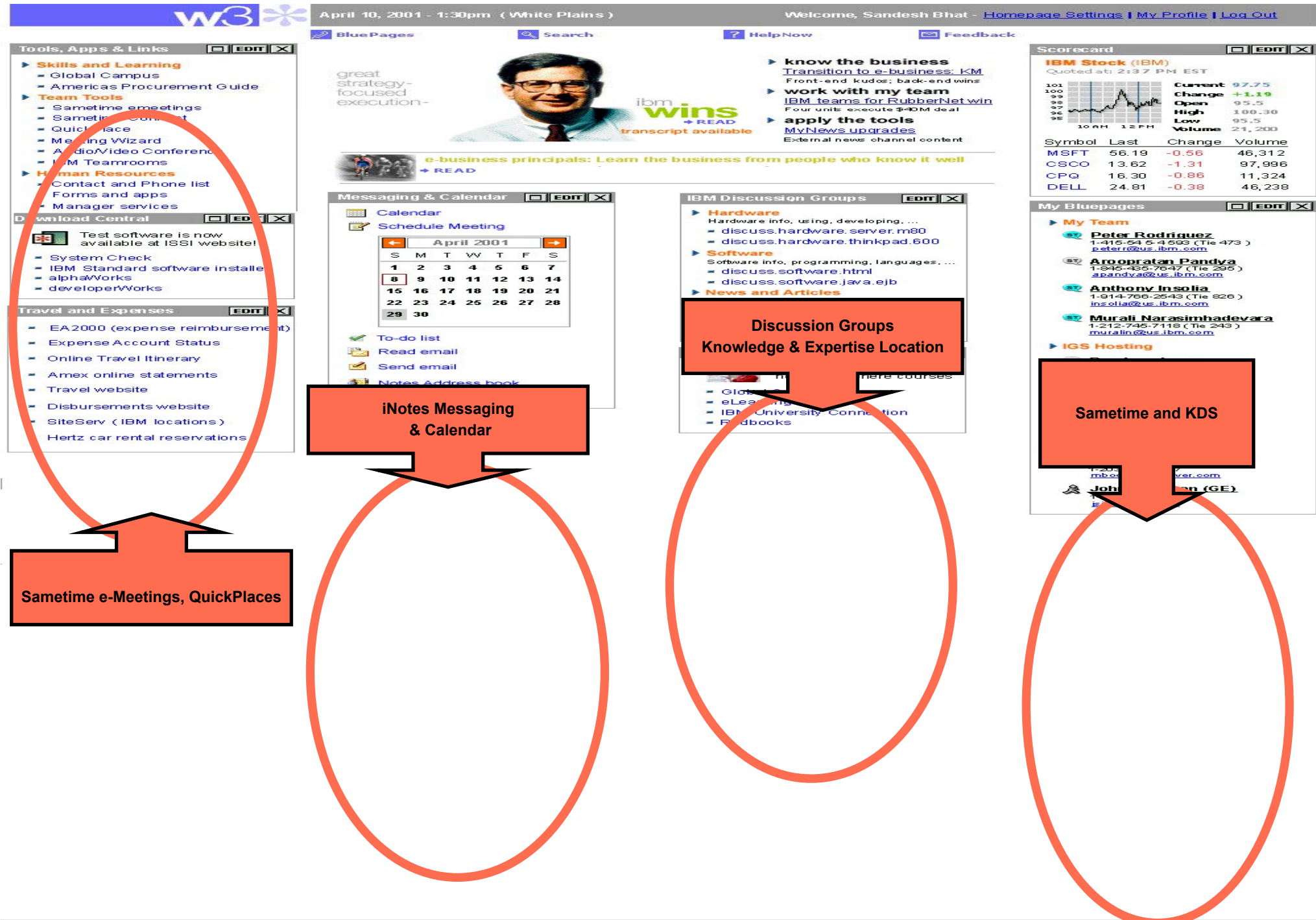
Pain Points
 Dependencies



Web Services Model



Evolve to Modular Drop-in Components for Collaboration



Opportunity:

Opportunity
 [] [New] [Save] [] [] 1 of 7+

***Name:** Incentive Compensation - 2500 See
Sales Method: Standard Sales Process
Committed:
***Close Date:** 11/30/2001
Sales Team: CCHENG
Sales Stage: 06 - Short List
Revenue: \$2,625,000.00
Organization: Siebel Americas
Territories: []
Account: Marriott International
Probability %: 20%
Lead Quality: 2-Very High
Description: Marriott is an existing customer with a critical need for a compensation solution.
Site: HQ
Expected Value: \$525,000.00
Source: Inbound - eMail Response

Last Name	First Name	Mr/Ms	Work Phone #	Job Title	Email	Account	Site
Carlson	Mike	Mr.	(301) 380-5001	VP of Sales	mcarlson@marriott.	Marriott Internationa	HQ
Ellis	John	Mr.	(301) 555-3459	Director, IT	jellis@marriott.com		
Legters	John	Mr.	(301) 555-3459	Manager, Lodging S	jlegters@marriott.co	Marriott Internationa	HQ
Manning	James	Mr.	(408) 477-2006	VP, Information Sys	jmanning@marriott.c	Marriott Internationa	HQ
Metz	Curtis	Mr.	(301) 555-5387	Program Manager	cmetz@marriott.com	Marriott Internationa	HQ



Lotus Evolution to Standards

Incremental Capabilities

Discussions	Custom Apps	Web	e-meetings	Discovery	Portals
e-mail	Content	Scheduling	Workspaces	e-learning	Mobile

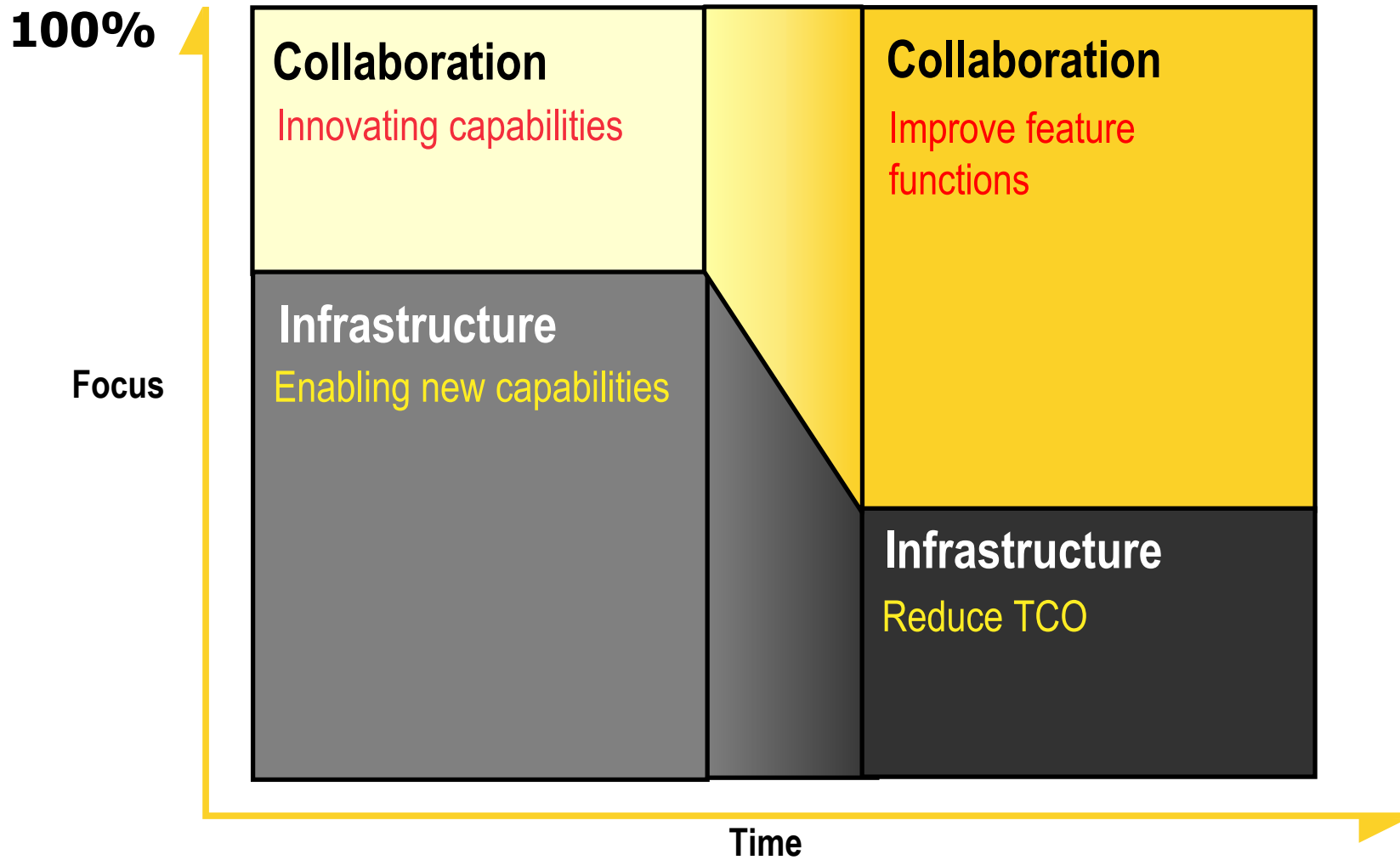
Solutions for Collaboration:
 Custom e-Learning Solutions
 e-Workplace portals
 e-Meetings
 Knowledge Discovery
 Grow with Lotus
 Move to Lotus

NAB	NetBios	HTTP	NNTP	IMAP	vCard	WSDL
NRPC	TCP/IP	SSL	POP3	SMTP	iCAL	UDDI
NSF	x.500	LDAP	XML	WML		
	LotusScript	Java	COM			SOAP
	RDB	CORBA			SIMPLE	

J2EE and Web Services
 Standards based infrastructure supporting collaboration capabilities

Technologies Added and Supported

Evolution of Development Focus



Lotus Evolution

 Gartner Group

Lotus Notes-Domino is still very much alive, and still leads in the groupware market. It is, however, in evolution, which is the right place for it to be. This is a good thing, not a bad thing. For example, the next release of Lotus Notes-Domino, code-named "RNext," will include more WebSphere content and greater integration with the directory and security strategies of IBM. It will be an evolutionary, rather than a revolutionary, move for users.

Gartner Group-- The Future of Lotus Notes E-Mail: Should You Migrate?

January 2002

Lotus Will Continue Lead in NextGen Collaboration Era



META Group

Bottom-Line Guidance for IT and Business Transformation

Driven by concrete business unit demands, the market for next-generation collaboration tools... is poised for rapid acceleration... We expect the business-to-employee (B2E) market to be largely dominated by Lotus and Microsoft by 2004.

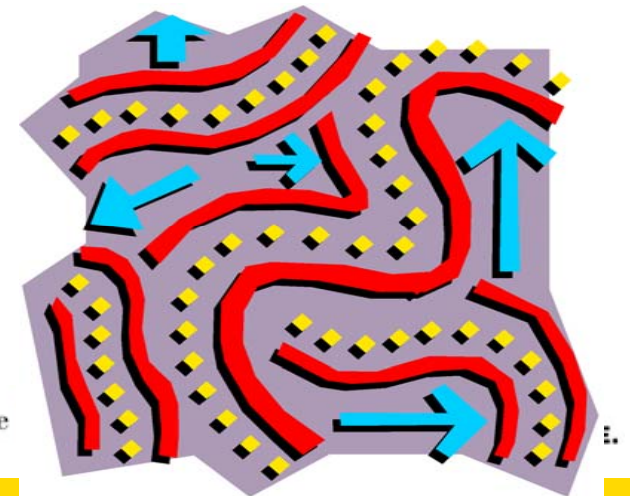
...we believe Domino shops would be foolish to look elsewhere for their B2E and B2B mainstream next-generation collaboration requirements...

META Group-- Collaboration: The Next Generation

November 2001

Getting you to the NextGen

- Skills development
 - ▶ J2EE, JSP, Web services, XML
- Organizational alignment
 - ▶ Align Domino developers with J2EE teams
- Solutions architecture
 - ▶ Design e-business solutions with contextual collaboration
 - ▶ Lotus software + J2EE = collaborative services for enterprise solutions



Summary

- Current business, technology, and market trends indicate it is time for the "NextGen"
- Lotus strategy:
 - ▶ Modular collaborative services
 - ▶ Self-contained evolves to flexible, scalable, standardised
- What you have deployed today will continue to work and remains relevant to your infrastructure

Resources

- General

- ▶ <http://www.ibm.com/developerworks>

- Web Services

- ▶ <http://www.ibm.com/software/solutions/webservices>

- ▶ <http://www.ibm.com/developerworks/webservices>

- ▶ <http://webservices.org>

- ▶ <http://www.webservicesarchitect.com>

- Google

- ▶ Computers > Programming > Internet > Web Services



[Directory Help](#)
 Search only in Web Services Search the Web

Web Services

[Computers](#) > [Programming](#) > [Internet](#) > Web Services

[Go to Directory Home](#)

Categories

- [Events](#) (2)
- [SOAP](#) (43)
- [Universal Description Discovery and Integration](#) (18)
- [FAQs and Tutorials](#) (4)
- [Specifications](#) (3)
- [Web Services Description Language](#) (8)
- [Implementations](#) (5)
- [UDDI](#) (18)
- [WSDL](#) (8)
- [Simple Object Access Protocol](#) (43)

Web Pages Viewing in Google PageRank order [View in alphabetical order](#)

- [developerWorks: Web services](http://www-106.ibm.com/developerworks/webservices/) - <http://www-106.ibm.com/developerworks/webservices/>
The Web Services special topic area is a resource for developers building Web applications for e-business, e-commerce, and the enterprise. By IBM.
- [Webservices.org](http://www.webservices.org/) - <http://www.webservices.org/>
WebServices resource center with news, analysis, reviews, forums, FAQs, whitepapers, and software.
- [XMethods](http://www.xmethods.net/) - <http://www.xmethods.net/>
An organization dedicated to promoting the development, deployment, and use of web services. Offers a directory of publicly-available web services, and forums for discussion about available web services.
- [Web Services Architect](http://www.webservicesarchitect.com/) - <http://www.webservicesarchitect.com/>
Web Services Architect is a resource site dedicated entirely to Web Services, helping to build and expand upon the Web Services community.

Help build the largest human-edited directory on the web.
[Submit a Site](#) - [Open Directory Project](#) - [Become an Editor](#)

- 8.00am Registration and Breakfast
- 8.30am Lotus Welcome: Duncan Hewett, GM, Lotus Software, ANZ
- 8.45am Lotus Software Keynote: Scott Cooper, Sr. VP Lotus Software WW

Technical Solutions

Business Solutions

9:30am	Lotus Discovery Server	Australian Bureau of Statistics: KM Strategies
10:15am	Morning Tea	
10:45am	Lotus Technology co-existing with your current infrastructure	Knowledge Management Roadmap: Lotus Discovery Server, Domino. Doc and Lotus Workflow
11:45am	WebSphere Portal Solution	e-Learning Solutions: IBM Mindspan
12:30pm	Lunch	
1:15pm	eCollaboration: A technical "under the covers" to integrating your desktop	eCollaboration: iSeries and Domino 6
2pm	Afternoon Tea	
2:30pm	Lotus Notes, Domino 6 & Designer: Technical Overview	Next Generation: eWorkplace
3:30pm	Lotus Sametime & QuickPlace: Developing on the Sametime Platform for real-time collaboration	Content Management Framework: Putting Domino on a Diet