

Best Practices For Maximo System Administration

Jamie Booker

1st June, 2012



Presentation Agenda

- Sharp Business Solutions Introduction
- Report Administration
- User Administration
- Start Center Tips & Tricks
- Application Designer Tips & Tricks
- General Tips, Tricks and Recommendations



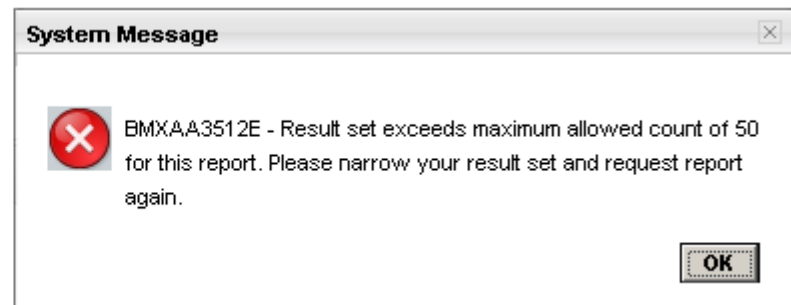
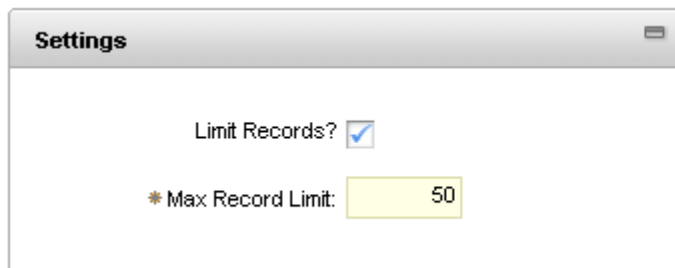
Sharp Business Solutions

- IBM Advanced Business Partner
- Staff located in Brisbane, Sydney, Melbourne and Adelaide
- End-to-end Service Provider for the Maximo Product Portfolio
 - implementations, improvements, upgrades, configuration, customisations, integration, training and support
- Pulse 2012 Event Exhibiting Partner



Report Administration

- Record Limits



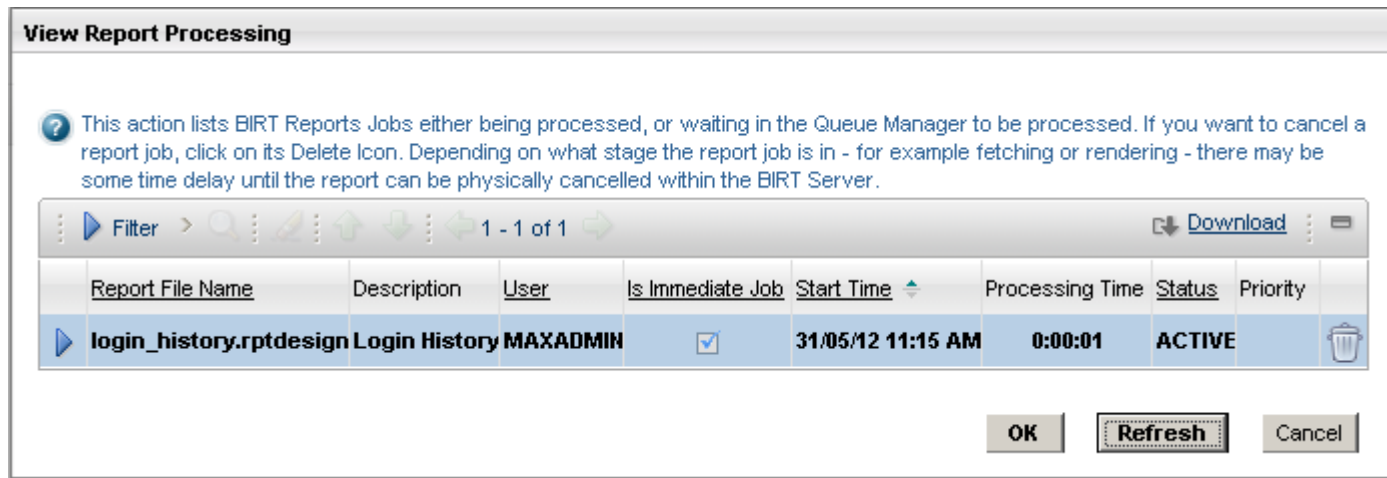
- Defines the maximum number of records a report can execute against
- Prevents end users from inadvertently executing reports against large record sets
- Can only be implemented on reports that use Current/Selected parameters

Report Administration

- Queuing
 - Limits the number of jobs that can be executed at any given time
 - Includes immediate and scheduled jobs
 - Set using system property **mxe.report.birt.maxconcurrentrun**
- Performance Tab & Report Usage Report
 - Allows a user to extract report execution and performance statistics
 - Identifies long-executing reports

Report Administration


- View Report Processing



View Report Processing

? This action lists BIRT Reports Jobs either being processed, or waiting in the Queue Manager to be processed. If you want to cancel a report job, click on its Delete Icon. Depending on what stage the report job is in - for example fetching or rendering - there may be some time delay until the report can be physically cancelled within the BIRT Server.

Filter > 1 - 1 of 1 Download

Report File Name	Description	User	Is Immediate Job	Start Time	Processing Time	Status	Priority	
login_history.rptdesign	Login History	MAXADMIN	<input checked="" type="checkbox"/>	31/05/12 11:15 AM	0:00:01	ACTIVE		

OK Refresh Cancel

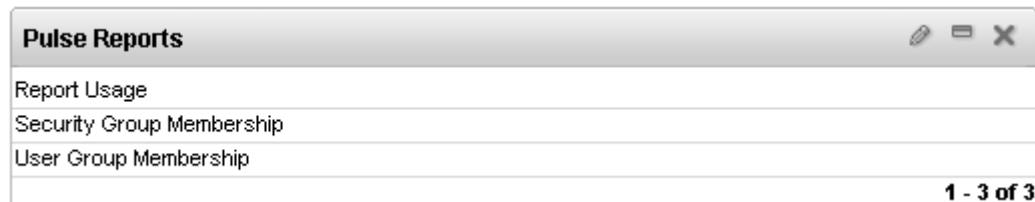
- Displays executing reports and/or reports awaiting execution
- Allows for cancellation of report job(s)

User Administration

- Determine Security Group & User Membership
 - Three methods for determining membership
 - KPI's, Saved Queries & The Start Center
 - Database Integrity Checker
 - Birt Reports

Start Center Tips & Tricks

- Report List Portlet

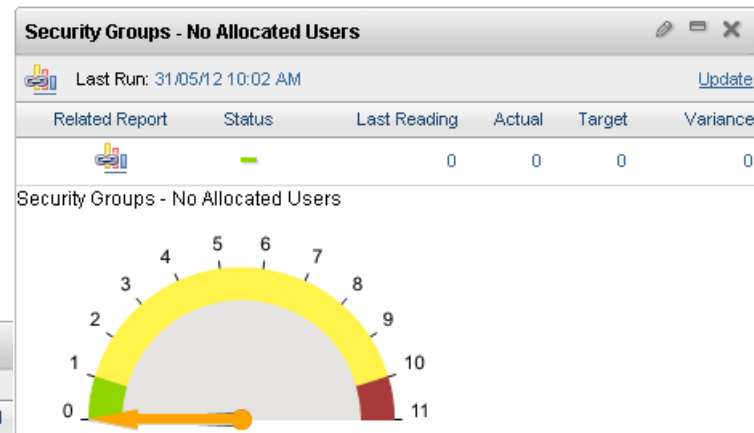


- Enables display of favourite and/or heavily accessed reports directly on the Start Center
- Introduced in December 2008 with Version 7.1.1.4

Start Center Tips & Tricks

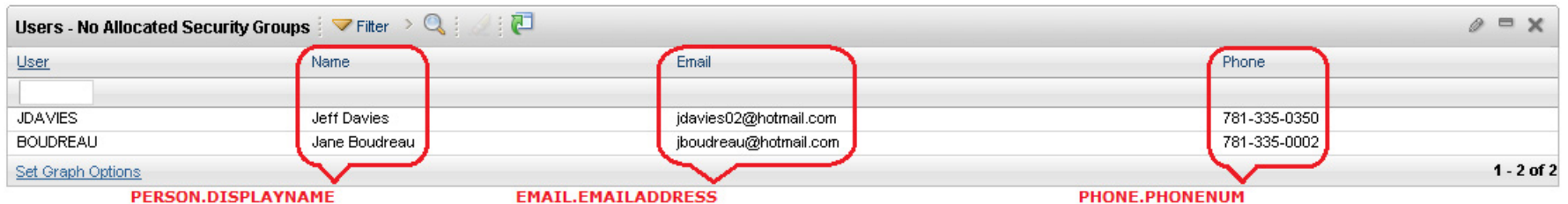
- Associating Reports with KPI's
 - Enables hyperlinking directly to a related report from a KPI displayed in KPI List and KPI Graph Portlets

Security Memberships				
Last Run: 31/05/12 10:02 AM				
Related Report	Status	KPI	Actual	Target
	—	Security Groups - No Allocated Users	0	0
	—	Users - No Allocated Security Groups	0	0



Start Center Tips & Tricks

- Adding Related Table Information to the Result Set Portlet



The screenshot shows a portlet titled "Users - No Allocated Security Groups" with a "Filter" dropdown and search icons. The table below displays user information with three columns: Name, Email, and Phone. Red callout boxes highlight the column headers, and red text labels below the table identify the related table names: PERSON.DISPLAYNAME, EMAIL.EMAILADDRESS, and PHONE.PHONENUM.

Name	Email	Phone
JEAVIES	jdavies02@hotmail.com	781-335-0350
BOUDREAU	jboudreau@hotmail.com	781-335-0002

1 - 2 of 2

- Allows supporting information to be placed against an object, for purposes of displaying more complete and meaningful content e.g. MAXUSER
- To enable, the related table information must be scripted into the RESULTSETCOLS table via SQL

Start Center Tips & Tricks

```
-- check for presence of related table fields
if not exists (select * from resultsetcols where app = 'USER' and attribute in ('EMAIL.EMAILADDRESS', 'PERSON.DISPLAYNAME')) begin

    -- declare variable
    declare @resultsetcolsid int

    -- retrieve the last used sequence value
    select @resultsetcolsid = max(resultsetcolsid) from resultsetcols

    -- add the related table fields
    insert into resultsetcols (app, attribute, maintable, resultsetcolsid) values ('USER', 'EMAIL.EMAILADDRESS', 'MAXUSER', @resultsetcolsid + 1)
    insert into resultsetcols (app, attribute, maintable, resultsetcolsid) values ('USER', 'PERSON.DISPLAYNAME', 'MAXUSER', @resultsetcolsid + 2)

    -- update the sequence table
    update maxsequence set maxreserved = @resultsetcolsid + 102 where tname = 'RESULTSETCOLS' and name = 'RESULTSETCOLSID'

end
```



Application Designer Tips & Tricks

- Screen Size
 - A screen resolution of 1280 X 1024 is recommended
- Horizontal Scrolling
 - Limit table columns in single-page & the List tab of power applications
 - Consider grouping controls of the same type vertically in section controls

The diagram illustrates a search form layout. The top part shows a wide form with search fields for Event, Location, and Status. The bottom part shows the same fields grouped vertically in a narrower container, with a blue arrow indicating the transition from the wide to the narrow view.

Event: PULSE	PULSE 2012	Location: SYDNEY	Sydney, Australia
Status: OPERATING		Site: SYDNEY	

Event: PULSE	PULSE 2012	Site: SYDNEY
Location: SYDNEY	Sydney, Australia	Status: OPERATING

- Consider moving content to the More Search Fields dialog and table details

Application Designer Tips & Tricks

- Vertical Scrolling
 - Consider use of the “Collapsed” property on table and section controls (a label must be specified for enablement in section controls)



- Consider use of the “Display Rows Per Page” property on table controls
- Consider removal of controls that are never used/populated
- Design screens with a screen resolution of 1280 X 1024 in mind

Application Designer Tips & Tricks

- Comparing Application Presentation Files
 - Consider as part of your Change Management Process
 - Identify and manage screen changes external to the Application Designer application for multiple environments e.g. UAT & Production
 - A file differencing and merging tool is recommended
 - Consider the use of WinMerge (<http://winmerge.org/>), an Open Source tool for Windows

General Tips, Tricks & Recommendations

- Maximo Auto Login

- Automatic login is achieved by providing user credentials as follows

`http://<hostname>:<port>/maximo/ui/login?login=url&username=<username>&password=<password>`

- Note; if stored as an Internet shortcut, user credentials are stored in plain text

General Tips, Tricks & Recommendations

- Stop & Start the Maximo Application Server from the Command Line
 - Saves having to sign into the WebSphere Administration Console

Syntax:

```
<drive>:\Program Files\IBM\WebSphere\AppServer\bin\stopServer.bat <server> -username <username> -password <password>
```

```
<drive>:\Program Files\IBM\WebSphere\AppServer\bin\startServer.bat <server> -username <username> -password <password>
```

Examples:

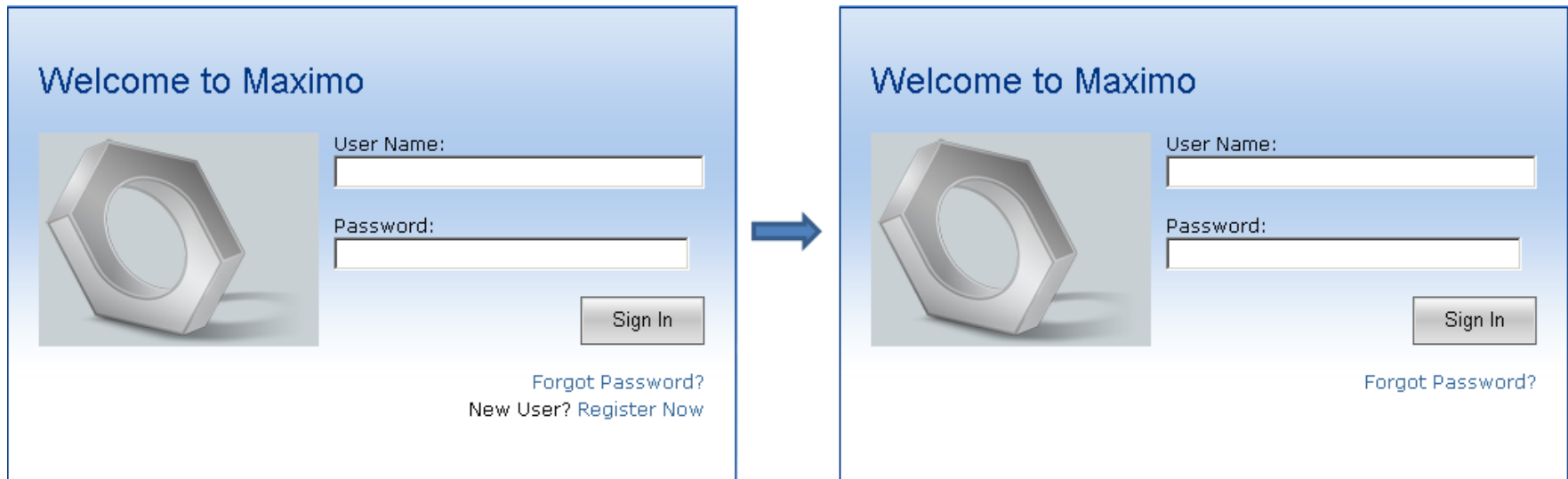
```
F:\Program Files\IBM\WebSphere\AppServer\bin\stopServer.bat MXServer -username maxadmin -password maxadmin
```

```
F:\Program Files\IBM\WebSphere\AppServer\bin\startServer.bat MXServer -username maxadmin -password maxadmin
```



General Tips, Tricks & Recommendations

- Hide New User Registration on Maximo Login Page



- Go to Database Configuration - Select Action - Messages
- Search for messagegroup = 'login' and messagekey = 'forgotpassword'

General Tips, Tricks & Recommendations

- Hide New User Registration on Maximo Login Page (continued)

- Set the value to:

```
<script type="text/javascript">var e = document.getElementById("otherlinks"); e.parentNode.removeChild(e);</script>
```

- Close the messages dialog
- Sign out of Maximo to view changes on login.jsp
- Refer to the following for instructions on changing the Maximo Login Message

<http://www-304.ibm.com/support/docview.wss?uid=swg21499942>



General Tips, Tricks & Recommendations

- Monitor Maximo Log Files with BareTail
 - The BareTail utility is a Windows equivalent of the Unix tail -f command
 - Download from <http://www.baremetalsoft.com/baretail/>
 - Consider creating a Send To menu option in Windows Explorer (shell:sendto)

SystemOut.log:

```
F:\Pulse\baretail.exe "F:\Program Files\IBM\WebSphere\AppServer\profiles\ctgAppSrv01\logs\MXServer\SystemOut.log"
```

SystemErr.log:

```
F:\Pulse\baretail.exe "F:\Program Files\IBM\WebSphere\AppServer\profiles\ctgAppSrv01\logs\MXServer\SystemErr.log"
```



General Tips, Tricks & Recommendations

- The Maximo Activity Dashboard (Performance Monitoring)
 - Maximo Performance Monitoring (PerfMon) gathers summary statistics such as hits, execution times (total, average, minimum, maximum, and standard deviation), MBO SQL Execution Time, SQL Calls, SQL Explain Plan, Stack Trace and simultaneous application requests.
 - Note; The monitoring system adds a good deal of overhead on the system. It should not be enabled while trying to make true measures of the response times, or scalability.

<http://www.ibm.com/developerworks/wikis/display/maximo/Interactive+Performance+Analysis+with+Maximo+Activity+Dashboard+%28MAD%29>

Questions

<http://www.sharpsolutions.com.au>

