



# Transformed by Technology

Transitioning a finance team to best support  
a business undergoing technology driven change



# About Paymark

When you use your EFTPOS debit or credit card to pay for goods or services in shops or online, chances are Paymark has played a part in the transaction. We're essentially the middleman, speaking with your bank and the point of sale technology (e.g. EFTPOS machine) to move money from your bank account to the place you are purchasing from. From our beginnings in 1989, we've grown to become New Zealand's leading payments provider, processing over 75 per cent of all our nation's electronic transactions.



Paymark



# Payments is changing...





# Win the Future



Paymark

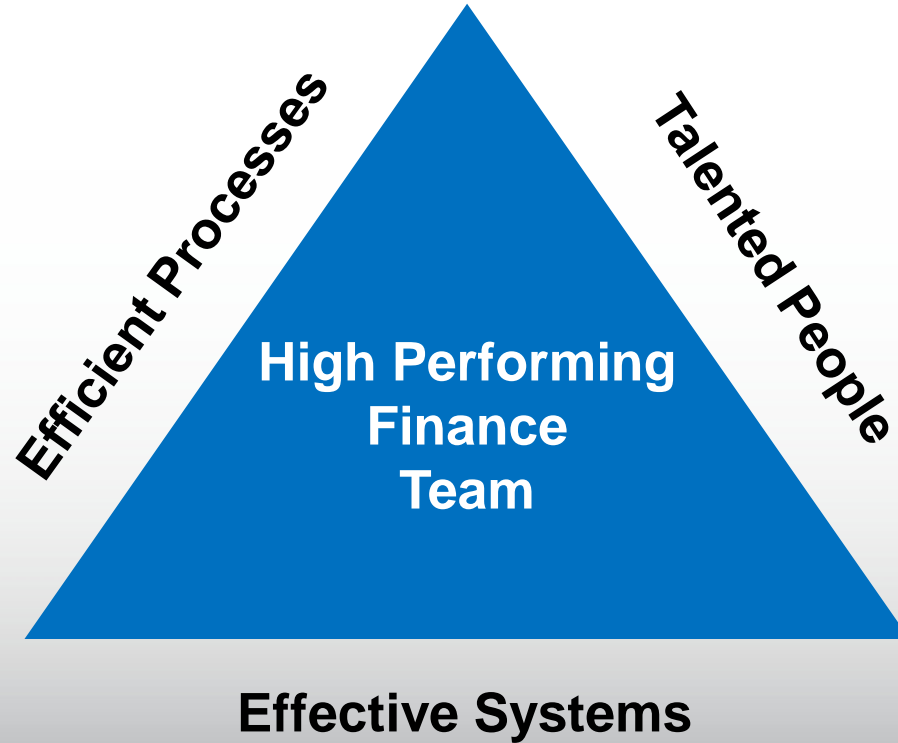
# Speed Up the Business

“It is no longer big beats  
small, it is *fast* beats slow.”

– Warren Buffett



# Finance Vision





# Finance Objectives

Accuracy &  
Timeliness

**Do it right**

Efficiency

**Do it the right  
way**

Valued  
business  
partner

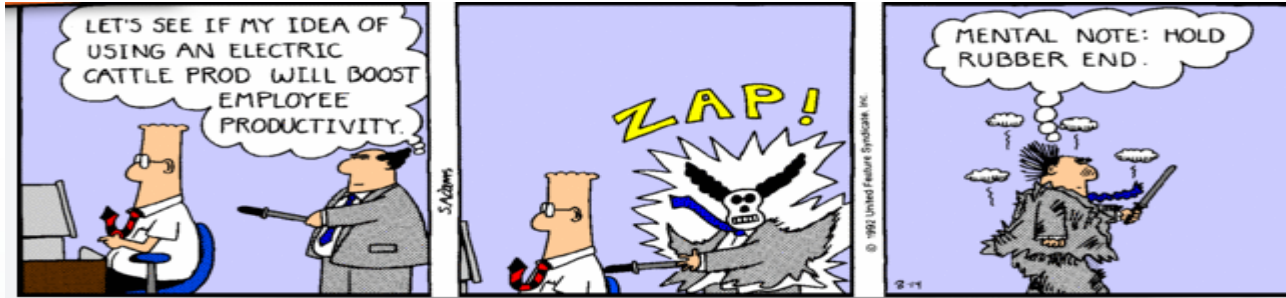
**Do the right  
role**

Empowered  
team  
providing  
value – add  
services

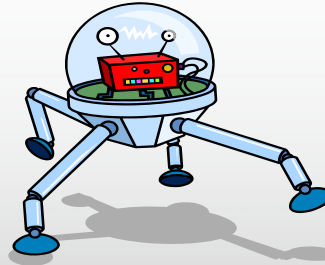
**Do it with the  
right team**



# Efficiency



**Eliminate**



**Automate**



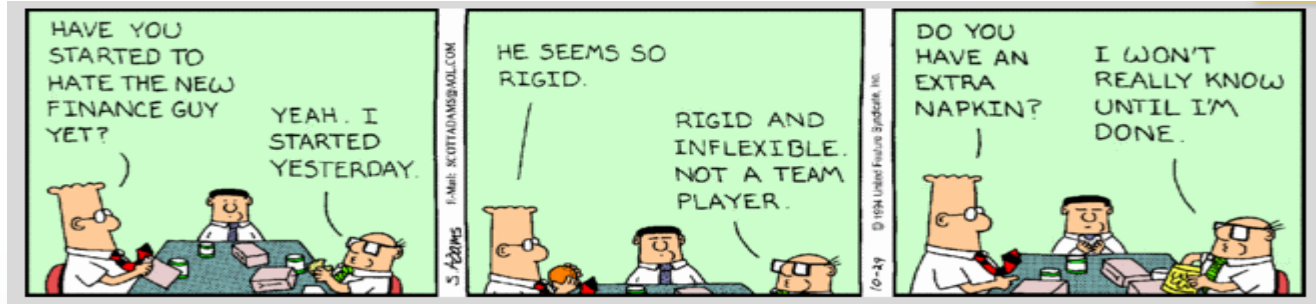
**Move**



# Valued Business Partner



# Build the Best Team



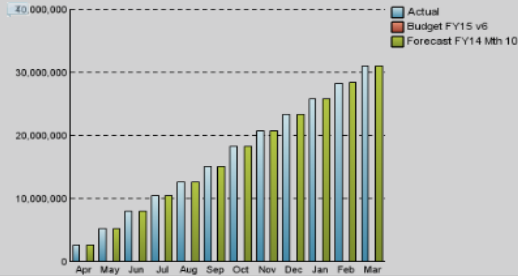


# Cognos – Web Based Reporting



Paymark

Chrt Expenses



Lst - Expenses by Department

Department	Amount
700100 - Salaries	1,032,406
730215 - IPTS Port Rentals - Dial Up	343,000
700120 - Salaries - Accruals	171,645
700300 - Contractors / Consultants	156,448
760204 - Maintenance - Third Party Software	77,870
730220 - IPTS Port Rentals - Direct	76,383
700500 - Premises	73,133
700503 - Premises - Data Centres	64,952
700302 - Consultants - Risk Mgmt & Internal Audit	48,500
700200 - Overtime	42,261

2014 Feb  
Unspec Cost Centre

IBM Cognos Express Planner Application - My Applications

Name	Actions
Budget Entry	More...
Forecast Entry	More...

PL Reports

Name	Actions
Profit and Loss by Month - By Account Code	More...
Profit and Loss by Month - By Subdepartment	More...
Profit and Loss by Year - By Account Code	More...
Profit and Loss by Year - By Subdepartment	More...

CT - Summary P&L

	Feb				Feb YTD			
	Actual	Budget FY15 vs	Variance	Forecast FY14 Mth 10	Actual	Budget FY15 vs	Variance	Forecast FY14 Mth 10
Total Revenue	0	0	0	0	0	0	0	0
Total Expenses	0	0	0	0	0	0	0	0
EBITDA	0	0	0	0	0	0	0	0
Total Amortisation	0	0	0	0	0	0	0	0
Total Depreciation	0	0	0	0	0	0	0	0
EBIT	0	0	0	0	0	0	0	0
Net Interest	0	0	0	0	0	0	0	0
EBT	0	0	0	0	0	0	0	0
EBT Including Associates Earnings	0	0	0	0	0	0	0	0



# Cognos – Web Based Planning

Version	Working Budget
Financial Year	2015
BudgetEntryMeasure	Amount
Cost Centre	10 - Corporate Services



Phasing driver  
 0 - Manual Entry  
 1 - Even Phasing  
 2 - Quarterly Phasing (1st Month)  
 3 - Quarterly Phasing (last Month)

## BUDGET ENTRY

Account	April 2014	May 2014	June 2014	July 2014	August 2014	September 2014	October 2014	November 2014	December 2014	January 2015	February 2015	March 2015	All months
	Working Budget	Working Budget	Working Budget	Working Budget	Working Budget	Working Budget	Working Budget	Working Budget	Working Budget	Working Budget	Working Budget	Working Budget	Working Budget
100-810100-1200 - Depreciation - EDP Equipment	342	342	342	342	342	342	342	342	342	342	342	342	4,104
100-810100-1400 - Depreciation - EDP Equipment	0	0	0	0	0	0	0	0	0	0	0	0	0
100-810100-1600 - Depreciation - EDP Equipment	229	229	229	5,785	5,785	5,785	5,785	5,785	19,118	19,118	19,118	19,118	106,084
100-810100-1800 - Depreciation - EDP Equipment	1,908	1,908	1,908	6,769	6,769	6,769	6,769	6,769	6,769	6,769	6,769	6,769	66,645
100-810100-2600 - Depreciation - EDP Equipment	3,572	3,572	3,572	3,572	3,572	3,572	3,572	3,572	3,572	3,572	3,572	3,572	42,864
100-810100-2800 - Depreciation - EDP Equipment	48,356	48,356	62,728	62,728	183,880	183,880	183,880	183,880	183,880	183,880	183,880	183,880	1,693,208
100-810100-3000 - Depreciation - EDP Equipment	0	0	0	0	0	0	0	0	0	0	0	0	0
100-810100-9000 - Depreciation - EDP Equipment	88,599	91,146	93,692	96,238	98,784	101,331	119,155	121,701	124,247	126,794	129,340	131,886	1,322,913
100-810100-9020 - Depreciation - EDP Equipment	4,147	4,147	4,147	4,147	4,147	4,147	4,147	4,147	4,147	4,147	4,147	4,147	49,764
100-810100-9030 - Depreciation - EDP Equipment	0	0	0	0	0	0	0	0	0	0	0	0	0
100-810100-9040 - Depreciation - EDP Equipment	0	0	0	0	0	0	0	0	0	0	0	0	0
100-810100-9060 - Depreciation - EDP Equipment	3,964	3,964	3,964	3,964	3,964	3,964	3,964	3,964	3,964	3,964	3,964	3,964	47,568
100-810101-9000 - Depreciation - Furniture & Fitti	0	0	0	0	0	0	0	0	0	0	0	0	0
100-810101-9020 - Depreciation - Furniture & Fitti	4,202	4,202	4,202	4,202	4,202	4,202	4,202	4,202	4,202	4,202	4,202	4,202	50,424
100-810102-9000 - Depreciation - Office Equipment	16	16	16	14	16	16	16	16	16	16	16	16	190
100-810102-9020 - Depreciation - Office Equipment	0	0	0	0	0	0	0	0	0	0	0	0	0
100-810103-9020 - Depreciation - Leasehold Altera	16,597	16,597	16,597	16,597	16,597	16,597	16,597	16,597	16,597	16,597	16,597	16,597	199,164
100-810104-1900 - Depreciation - Software	0	0	0	0	0	0	0	0	0	0	0	0	0
100-810104-9000 - Depreciation - Software	43,707	43,707	43,707	43,707	43,707	43,707	43,707	43,707	43,707	43,707	43,707	43,707	524,484



# Cognos – Product PL

Year:	2015
Month:	Jul
Version:	Actual
Rounding:	\$1 Rounding

Reprompt



## Product Profit and Loss - Summary

	All Products	POS	Terminal Provisioning	M Com	E Com	Data	ATM	Customised Solutions	Others	Customer Care	Switching	Product Innovation	PCMS
	All Products	1000	1200	1400	1600	1700	1800	1900	2400	2600	2900	3000	4000
Total POS Revenue	0	0	0	0	0	0	0	0	0	0	0	0	0
Total Terminal Provisioning Revenue	0	0	0	0	0	0	0	0	0	0	0	0	0
Total M-Commerce Revenue	0	0	0	0	0	0	0	0	0	0	0	0	0
Total ATM Revenue	0	0	0	0	0	0	0	0	0	0	0	0	0
Total E-Commerce Revenue	0	0	0	0	0	0	0	0	0	0	0	0	0
Total Customised Solutions Revenue	0	0	0	0	0	0	0	0	0	0	0	0	0
Total Data Revenue	0	0	0	0	0	0	0	0	0	0	0	0	0
Total Helpdesk Revenue	0	0	0	0	0	0	0	0	0	0	0	0	0
Total PCMS Revenue	0	0	0	0	0	0	0	0	0	0	0	0	0
Total Misc Revenue	0	0	0	0	0	0	0	0	0	0	0	0	0
Total Product Innovation Revenue	0	0	0	0	0	0	0	0	0	0	0	0	0
Internal Switching services Revenue	0	0	0	0	0	0	0	0	0	0	0	0	0
Internal Helpdesk Revenue	0	0	0	0	0	0	0	0	0	0	0	0	0
<b>Total Revenue</b>	<b>0</b>	<b>0</b>	<b>0</b>	<b>0</b>	<b>0</b>	<b>0</b>	<b>0</b>	<b>0</b>	<b>0</b>	<b>0</b>	<b>0</b>	<b>0</b>	<b>0</b>
<b>Total Expenses (Excl Depn and interest)</b>	<b>0</b>	<b>0</b>	<b>0</b>	<b>0</b>	<b>0</b>	<b>0</b>	<b>0</b>	<b>0</b>	<b>0</b>	<b>0</b>	<b>0</b>	<b>0</b>	<b>0</b>
<b>EBITDA</b>	<b>0</b>	<b>0</b>	<b>0</b>	<b>0</b>	<b>0</b>	<b>0</b>	<b>0</b>	<b>0</b>	<b>0</b>	<b>0</b>	<b>0</b>	<b>0</b>	<b>0</b>
<b>Total Depreciation</b>	<b>0</b>	<b>0</b>	<b>0</b>	<b>0</b>	<b>0</b>	<b>0</b>	<b>0</b>	<b>0</b>	<b>0</b>	<b>0</b>	<b>0</b>	<b>0</b>	<b>0</b>
<b>Total Amortisation</b>	<b>0</b>	<b>0</b>	<b>0</b>	<b>0</b>	<b>0</b>	<b>0</b>	<b>0</b>	<b>0</b>	<b>0</b>	<b>0</b>	<b>0</b>	<b>0</b>	<b>0</b>
<b>EBIT</b>	<b>0</b>	<b>0</b>	<b>0</b>	<b>0</b>	<b>0</b>	<b>0</b>	<b>0</b>	<b>0</b>	<b>0</b>	<b>0</b>	<b>0</b>	<b>0</b>	<b>0</b>
999991 - Allocations - Switching Services	0	0	0	0	0	0	0	0	0	0	0	0	0
999997 - Allocations - Help desk	0	0	0	0	0	0	0	0	0	0	0	0	0
999992 - Allocations - Staff Support	0	0	0	0	0	0	0	0	0	0	0	0	0
<b>Total Indirect Expenses</b>	<b>0</b>	<b>0</b>	<b>0</b>	<b>0</b>	<b>0</b>	<b>0</b>	<b>0</b>	<b>0</b>	<b>0</b>	<b>0</b>	<b>0</b>	<b>0</b>	<b>0</b>
<b>Net Contribution (EBIT less indirect expenses)</b>	<b>0</b>	<b>0</b>	<b>0</b>	<b>0</b>	<b>0</b>	<b>0</b>	<b>0</b>	<b>0</b>	<b>0</b>	<b>0</b>	<b>0</b>	<b>0</b>	<b>0</b>
999990 - Allocations - Corporate Services	0	0	0	0	0	0	0	0	0	0	0	0	0
999993 - Allocations - Customer Management	0	0	0	0	0	0	0	0	0	0	0	0	0
999995 - Allocations - Project & Security	0	0	0	0	0	0	0	0	0	0	0	0	0
999995 - Allocations - Product Management	0	0	0	0	0	0	0	0	0	0	0	0	0
999994 - Allocations - Sales & Marketing	0	0	0	0	0	0	0	0	0	0	0	0	0
999910 - Allocations - Innovation	0	0	0	0	0	0	0	0	0	0	0	0	0
<b>Total Allocations</b>	<b>0</b>	<b>0</b>	<b>0</b>	<b>0</b>	<b>0</b>	<b>0</b>	<b>0</b>	<b>0</b>	<b>0</b>	<b>0</b>	<b>0</b>	<b>0</b>	<b>0</b>
<b>Net Surplus before Tax</b>	<b>0</b>	<b>0</b>	<b>0</b>	<b>0</b>	<b>0</b>	<b>0</b>	<b>0</b>	<b>0</b>	<b>0</b>	<b>0</b>	<b>0</b>	<b>0</b>	<b>0</b>

# Learnings



Invest time upfront to ensure everyone is on the same bus

Rome wasn't built in a day, except in Lego Land.

*Josh Stern*

Manage expectations



Utilise expert external partners



# Learning's



Engage the business early to ensure you understand their requirements



Don't work in isolation – involve the business in design and testing

You don't have to  
reinvent the wheel...  
just steal the  
hubcaps.

*Michael P Naughton*

