



# IBM Cognos Real-time Monitoring

*View up-to-the second relevant information in context with your BI information*

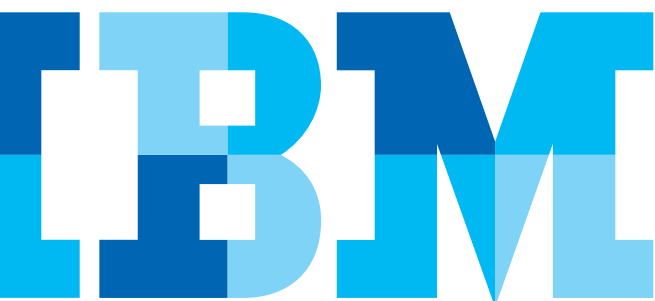
## Overview

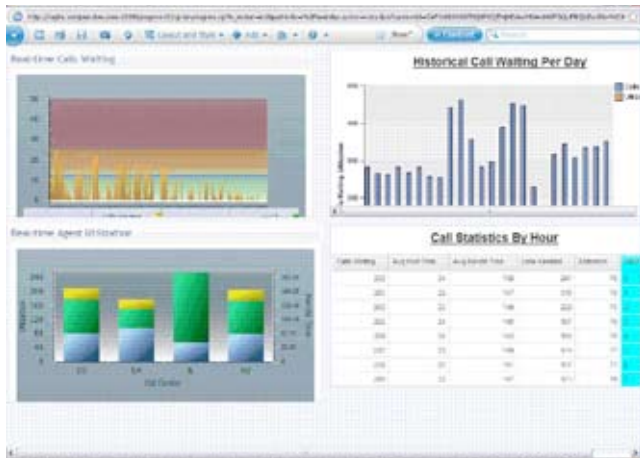
IBM Cognos® Real-time Monitoring is an actionable business intelligence solution which addresses an enterprise's real-time monitoring needs for the operational frontline. Designed for the Fortune 1000 enterprise, IBM Cognos Real-time Monitoring delivers self-service, interactive dashboards with easy to develop operational KPIs and measures to support your organization's operational KPI monitoring agenda.

IBM Cognos Real-time Monitoring is a solution for consumers of actionable business intelligence that provides an organization's frontline with rich, visual operational KPIs and measures for supporting up-to-the-moment decision making needs. Actionable BI provides the business with immediate contextual intelligence giving workers insight into relevant operational drivers to make accelerated decisions. These accelerated decisions drive actions that have optimal impact on business operations in real-time such as call center agent utilization, marketing lead monitoring and SLA monitoring.

## Real-time condition-based monitoring solution for organizations of all sizes

Fortune 1000 departments and midsize enterprises share many of the same decision-making and action needs on an intra-hourly basis. Both need ready access to consistent data and the ability to react quickly to fleeting revenue and cost saving opportunities. IBM Cognos Real-time Monitoring delivers actionable BI capabilities including real-time monitoring of time sensitive KPIs and measures, analysis and exception management through proactive alerting. The business manager and analyst gain immediate insight into up to the moment changing conditions within an organization's operational environment. In addition, business users can view real-time information with related IBM Cognos Business Intelligence information for a holistic view of their business.





View KPIs and operational metrics in context with related IBM Cognos Business Intelligence information.

## Feature Overview

IBM Cognos Real-time Monitoring features include:

- Drill down capabilities – users can quickly determine the root cause of an issue.
- Business-defined alerts – users can set watchpoints, collaborate and alert all parties to sudden issues to address, and manage exceptions based on business rules.
- Robust self-service query, reporting and analysis – business users can create self-service reports and queries against any data source.
- Flexible, drag-and-drop report authoring environment – users can create their own ad hoc queries, analyses, and formatted reports without IT assistance and can employ analysis to discover underlying trends and anomalies.

IBM Cognos Real-time Monitoring dramatically reduces the burden on IT resources:

- **Minimize downtime.** IT can automatically upgrade the software or download patches, minimizing the typical downtime of software maintenance and problem resolution.
- **Simplify administration.** The Workbench provides a central place for administrators to set up data sources and analytic models to present current information, historical data, or aggregated views.
- **Centralized security.** User-, group-, and role-based access granularity is supported by a centralized security model providing access control to any IBM Cognos Real-time Monitoring object—event, cube, view, dimension, rule, alert, portlet, or dashboard.

## IBM Cognos 10: Intelligence Unleashed Smarter Decisions. Better Results

Cognos 10 delivers a revolutionary new user experience and expands traditional business intelligence (BI) with planning, scenario modeling, real-time monitoring and predictive analytics. With the ability to interact, search and assemble all perspectives of your business, Cognos 10 provides a limitless BI workspace to support how people think and work.

Cognos 10 enables organizations to outperform by providing:

- **Analytics** that everyone can use in a BI workspace that sharpens individual skills to answer key business questions
- **Collective intelligence** with built-in collaboration and social networking to connect people and insights to gain alignment
- **Actionable insight** everywhere in mobile, real-time and business processes to instantly respond at the point of impact

Built on a proven technology platform, Cognos 10 is designed to upgrade seamlessly and to cost-effectively scale for the broadest of deployments. Cognos 10 provides you and your organization the freedom to see more, do more—and make the smart decisions that drive better business results.



Real-time monitoring of key performance indicators (KPIs) and operational metrics from disparate data sources.

## Fast data access

IBM Cognos Real-time Monitoring uses a 64-bit in-memory analytic server to capture current data for business users' reporting, dashboards, and more. Because this data is in-memory, users can quickly retrieve information from multiple operational source systems for real-time monitoring, analysis and reporting. The in-memory server houses a patented memory-based data store for continuous data integration, as well as security, multidimensional analysis, dynamic modeling, business-rules execution, collaboration, exception management and alert reporting.

IBM Cognos Real-time Monitoring delivers uniformly fast query response times, even as more users are added. With its scalable architecture, the system lets you add users without degrading performance, giving you room to grow as your needs change.

## Conclusion

IBM Cognos Real-time Monitoring provides instant visibility into business conditions through delivery of up-to-moment and easy-to-use views of operational key performance indicators and measures. By adding another dimension to your BI information with real time information, IBM Cognos Real-time Monitoring helps drive smarter decisions.

## About IBM Business Analytics

IBM Business Analytics software delivers complete, consistent and accurate information that decision-makers trust to improve business performance. A comprehensive portfolio of business intelligence, advanced analytics, financial performance and strategy management and analytic applications gives you clear, immediate and actionable insights into current performance and the ability to predict future outcomes

## For more information

For further information or to reach a representative:  
[ibm.com/cognos](http://ibm.com/cognos).

## Request a call

To request a call or to ask a question, go to [ibm.com/cognos/contactus](http://ibm.com/cognos/contactus). An IBM Cognos representative will respond to your enquiry within two business days.



---

© Copyright IBM Corporation 2010

IBM Canada Ltd.  
3600 Steeles Ave. East  
Markham ON L3R 9Z7  
Canada

Produced in Canada  
August 2010  
All Rights Reserved

IBM, the IBM logo and [ibm.com](http://ibm.com) are trademarks or registered trademarks of International Business Machines Corporation in the United States, other countries, or both. If these and other IBM trademarked terms are marked on their first occurrence in this information with a trademark symbol (® or ™), these symbols indicate U.S. registered or common law trademarks owned by IBM at the time this information was published. Such trademarks may also be registered or common law trademarks in other countries. A current list of IBM trademarks is available on the Web at "Copyright and trademark information" at: [ibm.com/legal/copytrade.shtml](http://ibm.com/legal/copytrade.shtml).

Other product, company or service names may be trademarks or service marks of others.

References in this publication to IBM products or services do not imply that IBM intends to make them available in all countries in which IBM operates.

Microsoft, Windows, Windows NT, and the Windows logo are trademarks of Microsoft Corporation in the United States, other countries, or both.

P25003



Please Recycle

---

## Business Analytics software