



## **IBM INFORMATION INTEGRATION & GOVERNANCE SYMPOSIUM 2012**

*Delivering Trusted Information for Smarter Business Decisions*

# Smarter, faster, easier Information Integration

## IBM InfoSphere Information Server 8.7

Gavin Fernandes -InfoSphere Software Technical Sales

May 2012

# Why IBM InfoSphere Information Server?

- What constitutes a successful project rollout?

47% of users don't have confidence in their information

59% of users say that they miss information that might be of value to their jobs because they can not find it

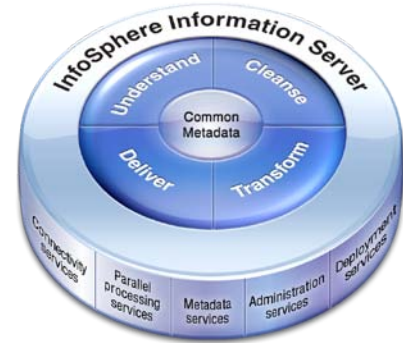
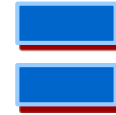
27% of managers time is spend searching for information

50% of the information they obtain has no value to them

*Sources: IBM & Industry Studies, Customer Interviews  
IBM CIO Survey, Accenture survey, Gartner BI Summit*



# IBM InfoSphere Information Server History



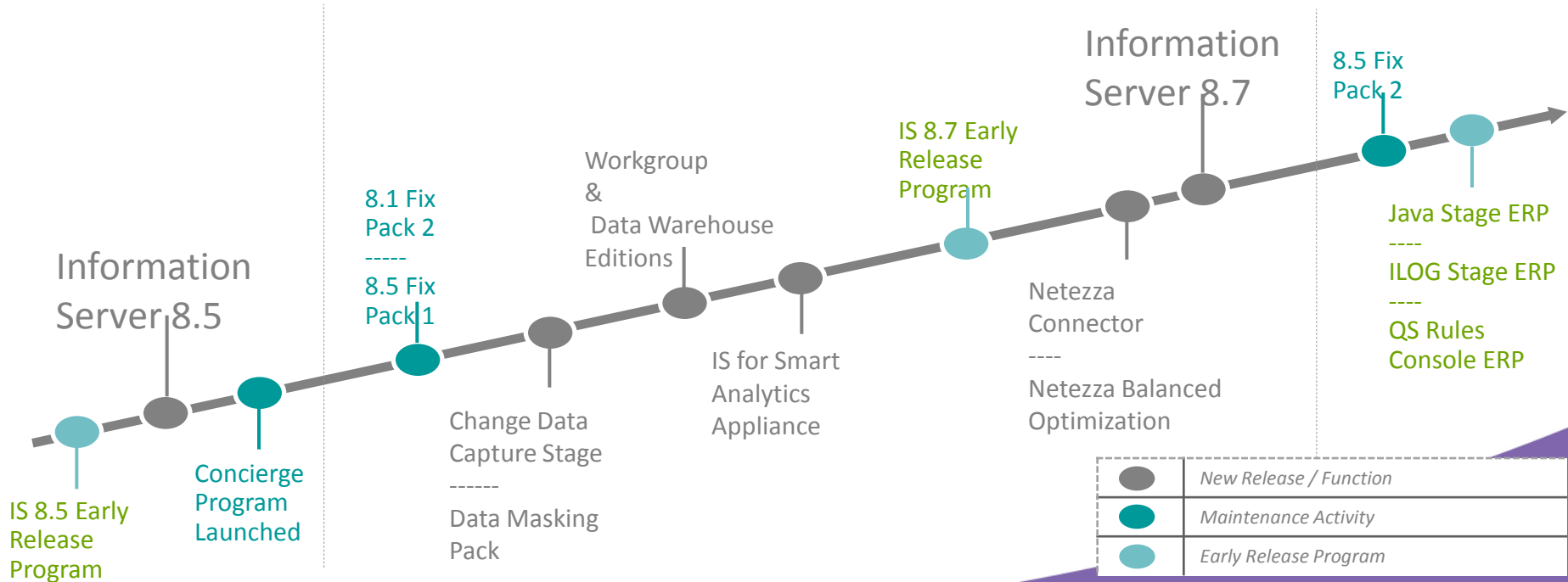
# Recent Release Activity

*Continued Platform Advances and Ongoing Customer Support*

**2010**

**2011**

**2012**



twitter: Follow @ANZ\_IM or mention #IIGS

## Smarter, faster, easier information integration

Understanding, cleansing, transforming and delivering trusted information



### Four areas of innovation focus:

- 1 Comprehensive information governance capability**
  - Empowering users with a more complete and controlled view of their information
- 2 Enhanced productivity for users and organizations**
  - Reducing integration time and cost
- 3 New and tighter integration**
  - Linking closely with other IBM solutions and solutions from other vendors
- 4 Big data support**
  - Addressing the most challenging data volumes across the enterprise



# 1 Comprehensive information governance capability

## Data Rules Stage

- Data quality monitoring and analysis as part of any data integration job
- Shared rules allow for multiple entry points into a data governance program

The screenshot displays the IBM InfoSphere Information Analyzer interface, showing the configuration of a data rule. The interface is divided into several sections:

- Selected Data Rule and Rule Set Definitions:** A table showing the selected rule.
 

Name	Type	Description	Expression
Gender Code Standardized	Data Rule	M and F gei	gender in_refere
- Data Rule and Rule Set Definitions:** A list of available rules.
 

Name	Type	Description	Expression
Account is numeric	Data Rule	account is r	account is numeric
Account Quality	Rule Set	general che	
Account is unique	Data Rule	unique acco	account occurs = 1
City Exists	Data Rule	city exists	city exists
DOB Format	Data Rule	proper date	dob matches Format
Fname exists	Data Rule	fname exist	fname exists and do
Gender Code Standardized	Data Rule	M and F gei	gender in reference
Name is Fname Lname	Data Rule	Full name ri	(Fname:'':Lname) =
- Input Fields (Rule Variables):** A table showing the input fields for the rule.
 

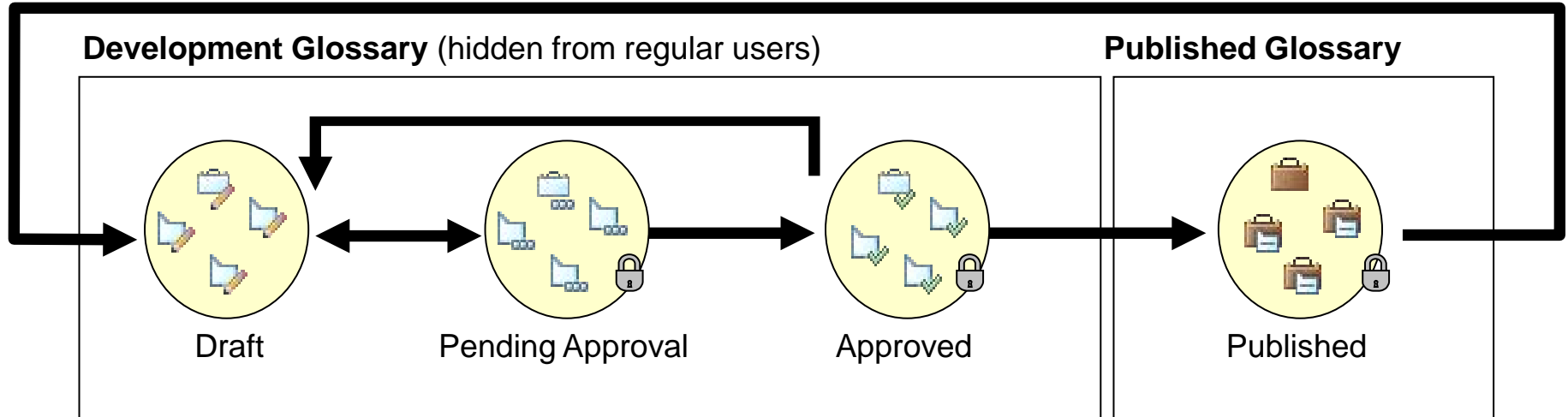
Name	Data Type	Data Rule Definition	Binding
Source Input			DSLINK1
gender	STRING	Gender Code Standard	DSLINK1.GEI
- Incoming Links:** A table showing the incoming links for the rule.
 

Input	Data Type
ACTNO	INT32
ADDRESS1	STRING
GENDER	STRING
LNAME	STRING
NAME	STRING
SSN	INT32
STATE	STRING
ZIP	INT32

Business Value:  
 One rule for your entire information landscape

# 1 Comprehensive information governance capability

## *Business Glossary Development Workflow*



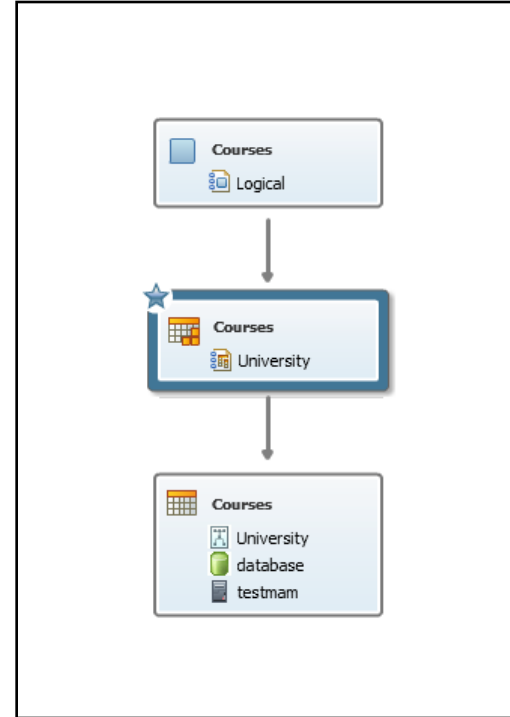
Business Value:  
**End-to-end process for term lifecycle**



# 1 Comprehensive information governance capability

## *A More Complete Picture of End-to-end Projects*

- Extended attributes in Metadata Repository
- Logical model support

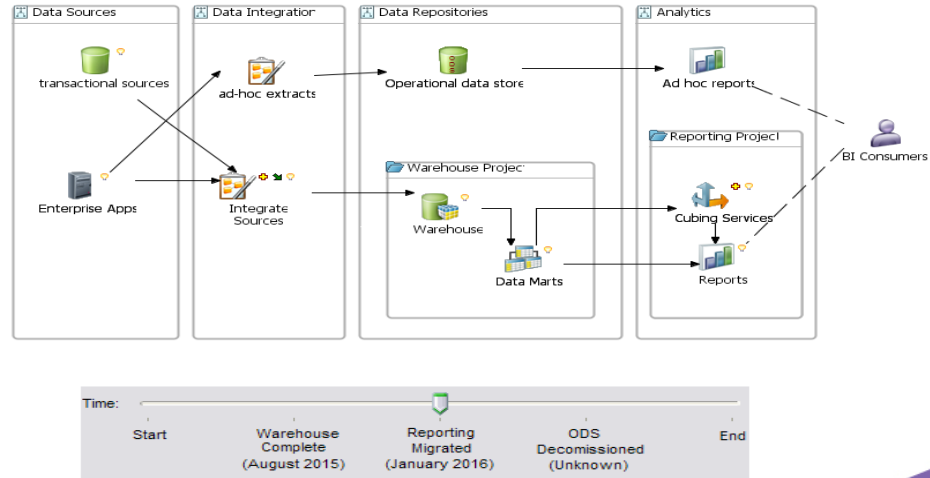




# 1 Comprehensive information governance

## InfoSphere Blueprint Director

- Generate tasks from method to ensure the team acts on best practices
- Simulate evolution of architecture along key milestones
- Additional methods



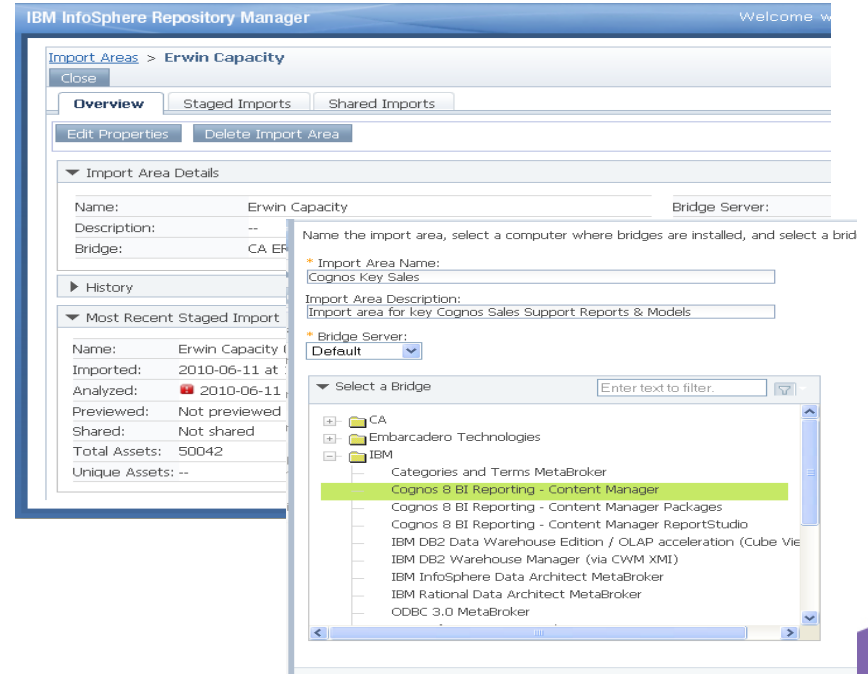
Business Value:

**Creates a collaborative project lifecycle, from vision to execution through completion**

## 2 Productivity for users and organizations

### Smarter Metadata Management

- Replacement for the Import/Export Manager
- Browser driven import functionality
- Quickly view all Import Areas



Business Value:  
Introduces intelligence into metadata import and management



# 2 Enhanced productivity for users and organizations



## Operations Console

- Dashboard-style graphs representing current job activity
- Visual cues to alert user to issues
- High-level summary and detailed information for both current and historical activity



Business Value:  
Achieve higher levels of productivity with a deeper understanding of your environment



twitter: Follow @ANZ\_IM or mention #IIGS

## 2 Productivity for users and organizations

### Parallel Job Debugging

- Debugging support for SMP, MPP, Cluster and GRID deployments
- Support for multiple breakpoints with conditional logic per link and node

The screenshot displays a workflow editor with an 'input' node connected to a 'DSLink2' link, which leads to a 'query' node. A context menu is open over the 'query' node, with 'Toggle Breakpoint' highlighted. Below this, the 'Debug Window' is open, showing the following details:

**Debug Window - used\_stock**

Job Status : Running  
 Debugger Status : Stopped at Next Link  
 Current Break : used\_stock.DSLink2  
 Current Break Filter :

Local Name	Local Data
used_stock.query.DSStageType	CTransformerStage
used_stock.query.DSStageLastErr	
Node A	
used_stock.DSLink2	
used_stock.DSLink2.DSLinkRowCount	9
used_stock.DSLink2.LASTERR	
used_stock.DSLink2.Field001	45655
used_stock.DSLink2.Field002	2FNF
used_stock.DSLink2.Field003	Freecom
used_stock.DSLink2.Field004	18820
used_stock.DSLink2.Field005	FHD-1 FireWire
used_stock.DSLink2.Field006	Cables
used_stock.DSLink2.Field007	SCSI USB Firewire (IEEE 1394/Link) Cables
used_stock.DSLink2.Field008	5.86
used_stock.DSLink2.Field009	5.88
used_stock.DSLink2.Field010	Y
used_stock.DSLink2.Field011	Y
used_stock.DSLink2.Field012	Y
used_stock.DSLink2.Field013	Y
used_stock.DSLink2.Field014	Y
used_stock.DSLink2.Field015	opened/used
Node B	
Watch Name	Watch Data
used_stock.DSLink3.Field002	2FNF
used_stock.DSLink2.Field003	Freecom
used_stock.DSLink2.Field004	18820
used_stock.DSLink2.Field009	5.88
used_stock.DSLink2.Field007	SCSI USB Firewire (IEEE 1394/Link) Cables

Buttons at the bottom: Add Watch, Remove Watch, Close, Help

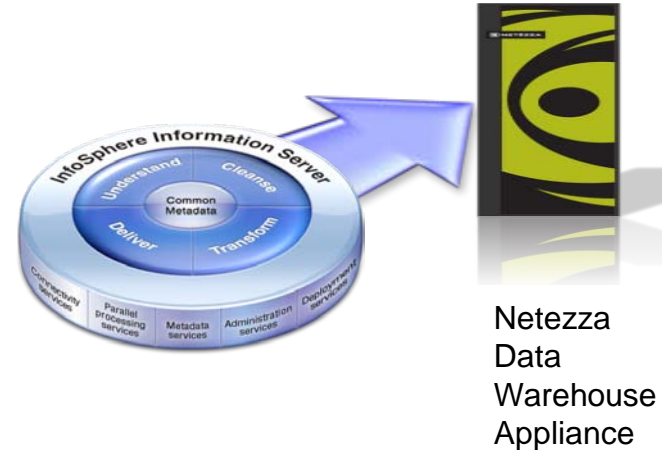
Business Value:  
 Reduces time to integration deployment



### 3 New and tighter integration

#### *Integration for data warehousing, governance and more*

- Next generation Netezza connectivity
- Metadata Integration with CDC and InfoSphere Warehouse
- Rational Team Concert integration for versioning and source control
- Integration with WebSphere CastIron



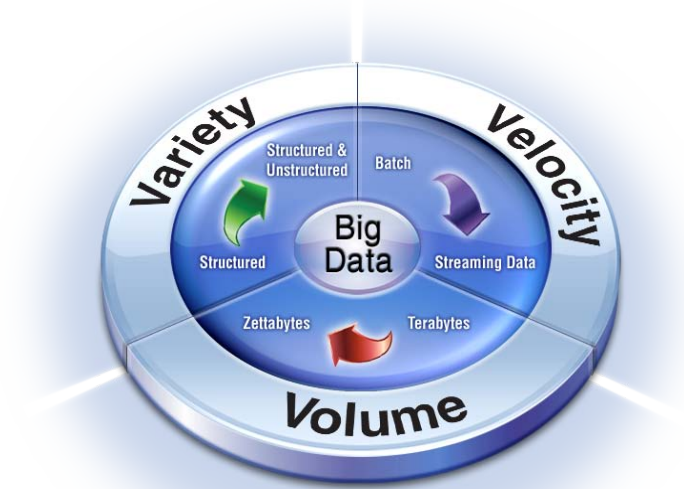
Business Value:

**Promotes collaboration and streamline the process of delivering enterprise business solutions**

# 4 Big data support

## Hadoop Support

- Exchange of information with big data sources
- Parallelism and scale of HDFS



Business Value:

**Leverage big data analysis across the enterprise**



# Summary

InfoSphere Information Server 8.7: Faster, smarter, easier information integration



twitter: *Follow @ANZ\_IM or mention #IIGS*