



# Business Agility in Action.

Innovate. Transform. Grow

## Processes and Decisions in the Cloud

Greger Ottosson, Program Director, Product Management

03/20/2012

# IBM Products for Business Process & Decision Management



## Bluemix Live

Business Process Manager

Process Center

Process Server

Management of all process components

Operational Decision Management

**IBM SmartCloud Enterprise**  
SmartCloud Enterprise worldwide

Explore our Infrastructure as a Service

Overview | Benefits | Details | Licensing and pricing

Smart. Secure. Ready for business.

IBM SmartCloud Enterprise is an agile cloud computing infrastructure as a service (IaaS) designed to provide rapid access to security-rich, enterprise-class virtual server environments, well suited for development and test activities and other dynamic workloads. Ideal for both IT and application development teams, the IBM SmartCloud delivers cloud-based services, systems and software to meet the needs of your business.

Order now

US & CA 1-877-426-3287  
Priority Code: 609CG0LW

Email  
Request a demo  
Cloud portal login

<b>Storage pilot</b> Exclusively for IBM SmartCloud Enterprise users. <a href="#">Learn more &gt;</a>	<b>Control access</b> Create accounts, manage permissions, modify user information and more. <a href="#">Learn more &gt;</a>	<b>Configure security</b> Manage the security of your virtual environments. <a href="#">Learn more &gt;</a>	<b>On-demand support</b> Gain assistance where and when you need it. <a href="#">Learn more &gt;</a>	<b>Enterprise +</b> Managed cloud environment that supports workloads to committed service level agreements. <a href="#">Learn more &gt;</a>
---	--	---	--	--

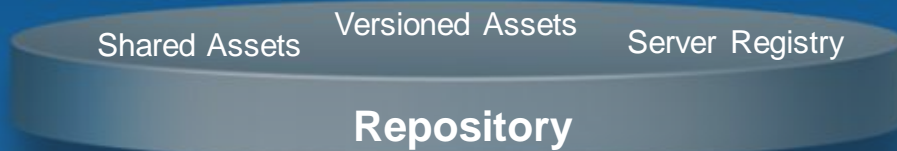
Purchase options | Experience IBM SmartCloud

Bus

Work together to deliver effective solutions for business operation improvement

## IBM Business Process Manager

### Process Center



### Process Server

BPMN

Process Rules

Monitoring

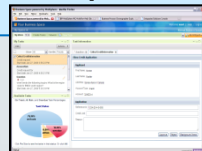
BPEL

ESB

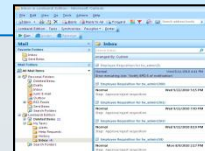
Out-of-box Process Portal



Configurable Business Space Widgets

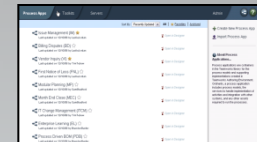


Optional Microsoft Add-ons



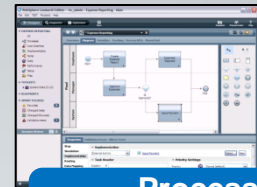
*End User Interfaces*

### Management



Process Center Console

### Design



Process Designer



Integration Designer

# IBM SmartCloud Enterprise

The screenshot displays the IBM SmartCloud Enterprise website. The top section features the title "IBM SmartCloud Enterprise" and the tagline "Explore our Infrastructure as a Service". Below this, there are navigation tabs for "Overview", "Benefits", "Details", and "Licensing and pricing". A prominent "Order now" button is visible. The main content area describes the service as an agile cloud computing infrastructure as a service (IaaS) designed for rapid access to security-rich, enterprise-class virtual server environments. A "Sign in" form is shown with fields for "User ID" (with an example "joe@us.ibm.com") and "Password", and a "Submit" button. Below the form is a "Watch the demo" video player. To the right, there is a "Product information" section with a "Learn more" link and a "Related links" section with several links to IBM's Cloud Computing site, SmartCloud Enterprise information, support community, and new to cloud computing.

More at: [ibm.com/cloud/solutions/enterprise](http://ibm.com/cloud/solutions/enterprise)

Cloud Portal: [ibm.com/cloud/enterprise](http://ibm.com/cloud/enterprise)

- **Hardware:**
  - Intel servers with 2-16 cores
  - Memory up to 16 GB
  - Storage with up to 10 TB
  - Server access from Internet or through secure VPN
  
- **Software:**
  - Linux or Windows
  - Catalog of IBM & Partner product images
  
- **Payment :**
  - Bring-your-own-license
    - Per hour charges for server
  - Pay-as-you-go
    - Per hour charges for server + software

# IBM SmartCloud Enterprise delivery centers



# How do I get started?



IBM Solutions Services Products Support & downloads My IBM Search

## IBM SmartCloud Enterprise

Explore our Infrastructure as a Service

SmartCloud Enterprise worldwide

Overview Popular uses Details Licensing and pricing

Smart. Secure. Ready for business.

IBM SmartCloud Enterprise is an agile cloud computing **infrastructure as a service (IaaS)** designed to provide rapid access to security-rich, enterprise-class virtual server environments, well suited for development and test activities and other dynamic workloads. Ideal for both IT and application development teams, the IBM SmartCloud delivers cloud-based services, systems and software to meet the needs of your business.

**Order now**

- Chat now
- US & CA 1-877-426-3287  
Priority Code: 609CG0LW
- Email
- Request a demo
- Cloud portal login

**Object storage**  
Now available - manage your unstructured data with a true global namespace.  
[Learn more >](#)

**Control access**  
Create accounts, manage permissions, modify user information and more.  
[Learn more >](#)

**Configure security**  
Manage the security of your virtual environments.  
[Learn more >](#)

**On-demand support**  
Gain assistance where and when you need it.  
[Learn more >](#)

**Enterprise +**  
Managed cloud environment that supports workloads to committed service level agreements.  
[Learn more >](#)

Start here



# Provisioning

## DEMO



### Choose Software

Select Image

- Rational Build Forge (1)  
Rational Build Forge Management Console
- Rational Build Forge Agent (2)  
Rational Build Forge Agent
- Rational Quality Manager (5)  
Rational Quality Manager Demo
- Rational Team Concert (5)  
Rational Team Concert Express with Sample Data
- Rational Team Concert and Rational Quality Manager (8)**  
Rational Team Concert and Rational Quality Manager
- Rational Application Developer (9)  
Rational Application Developer v7.5.2
- Rational Software Architect (10)  
Rational Software Architect v7.5.2

Next Cancel

### Step 1

### Choose hardware

Add Instance

Step 1 of 3: Select Image Configuration

Image Name: DB2 Express-C

Image Description: DB2 Express-C is an entry-level edition of the DB2 database.

Request Name: Anthony Dasari

Quantity: 25

Platform:  32bit  64bit

Server Size (#CPU/RAM/HDD):

- Bronze: 2/4GB/850GB
- Silver: 4/8GB/1024GB
- Gold: 8/16GB/1024GB
- Platinum: 16/16GB/2048GB

Expires On:

DB2 user passwords(s): db2cloud

Image id: 37

Previous Next Cancel

### Step 2

### Wait a few mins

IBM SmartCloud Enterprise

Overview Control panel Account Support

My Instances

Filter: All instances

Current filters: None

You are currently using 8 of 25 available instances

Instance name	IP Address	Created on	Quota	Data center	Price/unit	Status
CRH	128.35.208.120	April 7, 2011	0 Hour	ETH	\$0.19 / UHR	Stopped
CRH240K62	173.224.162.231	April 12, 2011	4 Days	RTT	\$0.34 / UHR	Active
CRH240K62	173.224.162.102	April 12, 2011	4 Days	RTT	\$0.34 / UHR	Active

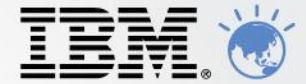
CRH [Change name] Expires: 45h3 722 Days [Refresh]

Instance id: 64079  
OS: Red Hat Enterprise Linux v5.4  
IP: 128.35.208.120  
Secondary IP(s): N/A  
Configuration: COP32.1/2048/80  
Disk size: 10 GB  
Hostname: 128.35.208.120  
Image: 37104.42711.4227.PM  
Storage: N/A  
Created on: 4/7/11  
Running for: 0 Hour

### Step 3



# IBM Products for Business Process & Decision Management



## Blueworks Live

### Business Process Manager

Process Center

Process Server

Management of all process components

### Operational Decision Management

Decision Center

Decision Server

Management of business rules & events

## Business Monitor

Work together to deliver effective solutions for business operation improvement





# From zero to process excellence award

“I don't remember if we ever talked about this or not. But, we had zero processes when we started with **Blueworks Live** [...] I honestly can say that the **Blueworks Live** software was on the podium with us when we accepted the award.”

– *Business Analyst upon receiving Process Excellence Award*



If someone asked you where the latest version of a critical process is documented, would you know how to answer?



Over 300,000 processes have been documented to date easily and securely in Blueworks Live

If change is required in a daily process, do you know who you need to communicate it to?  
What business functions are impacted?

15,000+ Blueworks Live users are being kept “in the loop” about the latest process changes impacting their businesses



How do I get started?

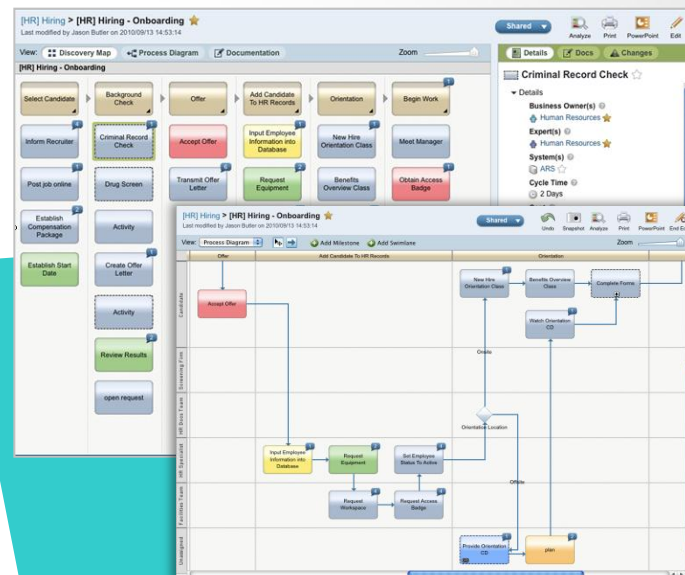
Over 100 reusable templates and over 10 hours of self-paced learning



# One shared repository of your most critical business assets



- **Simple enough** for the masses, yet **feature rich** enough to discover and document the most complex processes
- Discover, leverage and improve upon each other's work through **collaboration features** that **take the work out of process improvement**
- Automatically become part of the "loop" by **following the items you care most about**
- Take the guess work out of work by **automating simple processes** in 90 seconds or less for increased visibility into your operations



# Leveraging the Cloud on your BPM and DM Journey

## BlueworksLive



- Process and Decision Discovery
- Monthly User Subscriptions

**IBM SmartCloud**  
Enterprise

**BPM  
Express**



- Proof of Concepts
- Quick access
- Pay-As-You-Go

**IBM SmartCloud**  
Enterprise

**Full  
BPM**



- Quick Win pilots
- Development and Test
- Bring-Your-Own-Licenses

**NEW:**  
**Feb 2012**

- In-house Dev & Test
- Production Deployments



Project Lifecycle

# IBM Products for Business Process & Decision Management



## Blueworks Live

### Business Process Manager

Process Center

Process Server

Management of all process components

### Operational Decision Management

Decision Center

Decision Server

Management of business rules & events

## Business Monitor

Work together to deliver effective solutions for business operation improvement



Thank

Hardware:

YOU





# BPM in the IBM SmartCloud



## What is available Feb 2, 2012



- Pay-As-You-Go IBM BPM licenses
  - BPM Express
  - Process Designer



- Bring-Your-Own IBM BPM licenses
  - BPM Advanced
  - BPM Standard
  - BPM Express
  - Process Designer, Integration Designer

## Key Uses Cases

- **As a way to accelerate BPM evaluations**
  - Leverage Cloud for demos on-demand
  - Quick environment for POC and POT
- **An ideal environment for a Quick Win Pilot**
  - Fast access to a ready to use environment
  - Eliminates waiting for Customer Hardware and setup times
  - Customer leverage purchased licenses for BPM
- **Cloud environment for agile development and test**
  - Start projects faster
  - Rapidly grow and shrink for new projects over product dev lifecycle
  - Start in Cloud but move to On-Premise for production

### *Bring Your Own License Pricing Option (BYOL)*

- Pre-configured images
- Use PPA product entitlements; Get PPA product support
- Hosting charges apply for each image based on capacity

### *Pay As You Go Hourly Pricing Option (PAYG)*

- Single rental price for BPM and hosting
- Forum Support only



Our virtual private network environment services let you configure the cloud as a secured extension of your data center or as a standalone layered network.

Enables scenarios with tighter integration between in-house, third-party and cloud IT resources, for example:

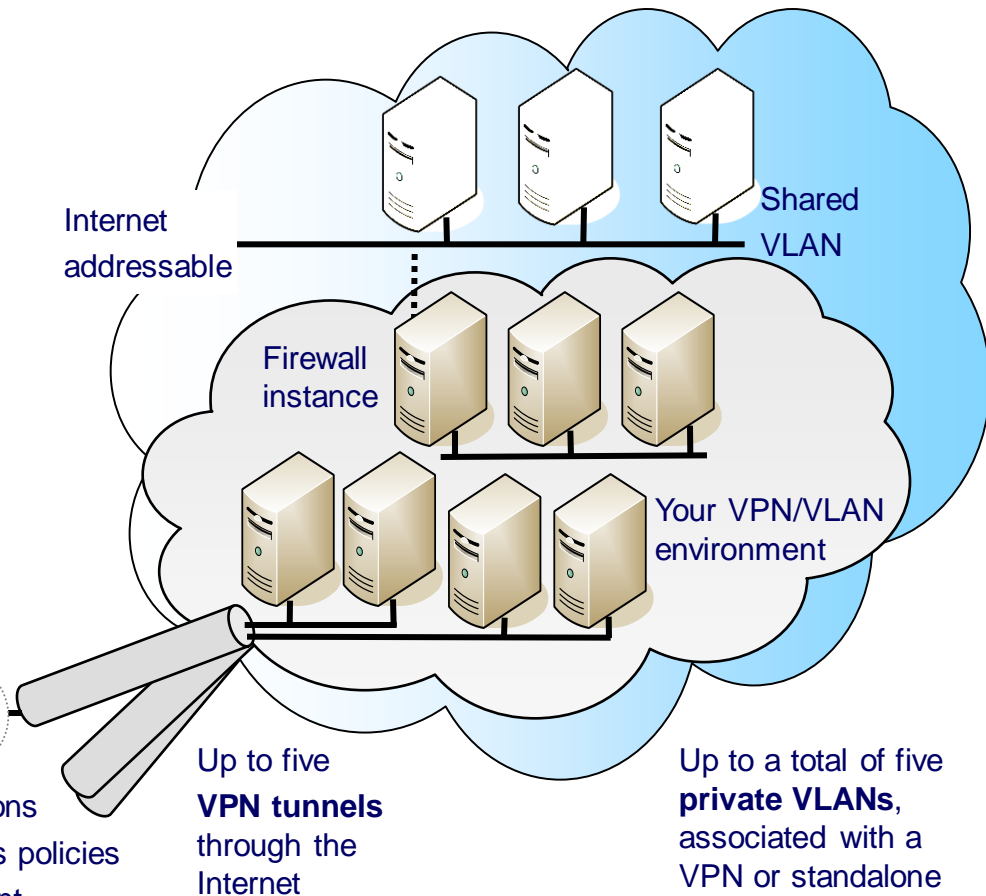
- Collaborative development
- Shared LDAP authentication and authorization
- Layered architecture with



Your in-house environments



- Your:
- Network and locations
  - Routing and access policies
  - Identity management



Up to five  
**VPN tunnels**  
through the  
Internet

Up to a total of five  
**private VLANs**,  
associated with a  
VPN or standalone

Nine 32- and 64-bit configuration options enable you to pick the virtual machine (VM) instance sizes that best fit your needs.




Virtual machine (VM) Options	32-bit configurations				64-bit configurations				
	Copper	Bronze	Silver	Gold	Copper	Bronze	Silver	Gold	Platinum
Virtual CPUs with 1.25 Gigahertz	1	1	2	4	2	2	4	8	16
Virtual Memory (Gigabytes)	2	2	4	4	4	4	8	16	16
Instance Storage (Gigabytes)	60	175	350	350	60	850	1024	1024	2048

- Intel® architecture servers provisioned in minutes with Linux® (Red Hat or Novell SUSE) or Microsoft® Windows® Server (2003 or 2008) and your choice of middleware.
- Provisioned in minutes, depending on instance storage size. Option to decrease instance storage to minimum required by chosen image to help reduce provisioning time.
- Virtual machines (VMs) can be provisioned as standalone servers or in combinations to build sophisticated configurations, including load-balancing and resilient architectures.
- Private images can be built on one virtual machine configuration and migrated to a configuration of a different size, within the limitations of the base IBM image.
- Prices start under 10 cents per hour\* for a virtual machine including operating system.
- Reserved capacity options provide pools of resources for immediate use at discounted rates.

\*US prices for 32-bit copper configuration with Windows Server or SUSE Enterprise Linux, current as of March 22 2011. Prices subject to change.

## BPM Images Available on SmartCloud Enterprise

- Each image is available to provision separately, but provisioning links images
- Only 64-bit images
- Version supported - v7.5.1
- Process Designer and Integration Designer run in the cloud – one instance per user

	Process Center	Process Server	Process Designer	Integration Designer
IBM BPM Express 	<ul style="list-style-type: none"> <li>▪ Combined PCE+PSE image</li> <li>▪ OS: RHEL 6.0 Linux</li> <li>▪ Silver</li> <li>▪ BYOL and PAYG</li> </ul>		<ul style="list-style-type: none"> <li>▪ PD Image</li> <li>▪ OS: Windows Server 2008</li> <li>▪ Copper</li> <li>▪ BYOL and PAYG</li> </ul>	
IBM BPM Standard 	<ul style="list-style-type: none"> <li>▪ PCS image</li> <li>▪ OS: RHEL 6.0 Linux</li> <li>▪ Silver</li> <li>▪ BYOL</li> </ul>	<ul style="list-style-type: none"> <li>▪ PSS image</li> <li>▪ OS: RHEL 6.0 Linux</li> <li>▪ Silver, Gold</li> <li>▪ BYOL</li> </ul>		
IBM Advanced 	<ul style="list-style-type: none"> <li>▪ PCA image</li> <li>▪ OS: RHEL 6.0 Linux</li> <li>▪ Silver, Gold</li> <li>▪ BYOL</li> </ul>	<ul style="list-style-type: none"> <li>▪ PSA image</li> <li>▪ OS: RHEL 6.0 Linux</li> <li>▪ Silver, Gold, Platinum</li> <li>▪ BYOL</li> </ul>		<ul style="list-style-type: none"> <li>▪ IID Image</li> <li>▪ OS: Windows Server 2008</li> <li>▪ Copper</li> <li>▪ BYOL</li> </ul>