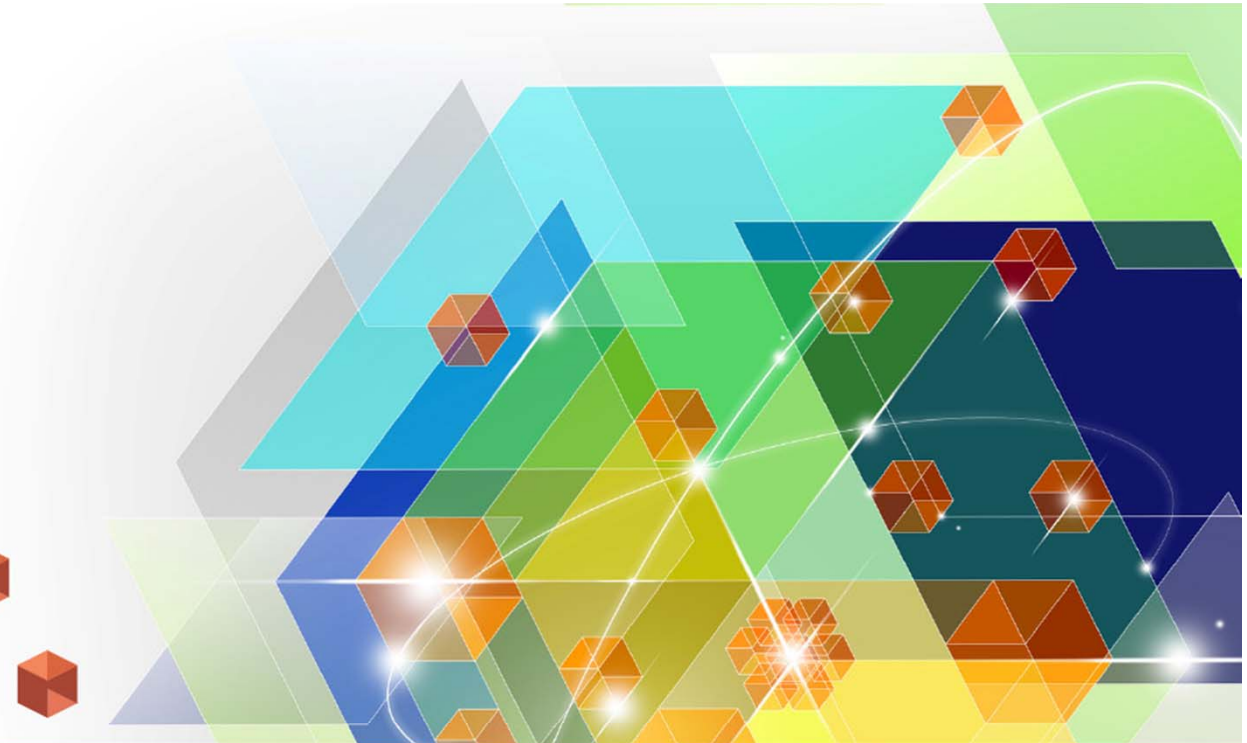




**Experience
freedom by
design**

**Gary Trytell
System z Executive**



The Journey to Smarter Computing

Trademarks



The following are trademarks of the International Business Machines Corporation in the United States and/or other countries.

AIX*	DB2*	IMS	Rational*	z/OS*
BladeCenter*	DFSMSHsm	Lotus*	System z*	z/VM*
CICS*	Domino*	NetView*	System z10*	z/VSE*
CICSplex*	GDPS*	OMEGAMON*	Tivoli*	
Cognos*	IBM*	Optim	WebSphere*	
DataPower*	IBM (logo)	Power Systems	zEnterprise	
DataStage*	InfoSphere	Quickr*		

* Registered trademarks of IBM Corporation

The following are trademarks or registered trademarks of other companies.

Adobe, the Adobe logo, PostScript, and the PostScript logo are either registered trademarks or trademarks of Adobe Systems Incorporated in the United States, and/or other countries. IT Infrastructure Library is a registered trademark of the Central Computer and Telecommunications Agency which is now part of the Office of Government Commerce.

Intel, Intel logo, Intel Inside, Intel Inside logo, Intel Centrino, Intel Centrino logo, Celeron, Intel Xeon, Intel SpeedStep, Itanium, and Pentium are trademarks or registered trademarks of Intel Corporation or its subsidiaries in the United States and other countries.

Linux is a registered trademark of Linus Torvalds in the United States, other countries, or both.

Microsoft, Windows, Windows NT, and the Windows logo are trademarks of Microsoft Corporation in the United States, other countries, or both.

ITIL is a registered trademark, and a registered community trademark of the Office of Government Commerce, and is registered in the U.S. Patent and Trademark Office.

UNIX is a registered trademark of The Open Group in the United States and other countries.

Java and all Java based trademarks and logos are trademarks or registered trademarks of Oracle and/or its affiliates.

Cell Broadband Engine is a trademark of Sony Computer Entertainment, Inc. in the United States, other countries, or both and is used under license therefrom.

Linear Tape-Open, LTO, the LTO Logo, Ultrium, and the Ultrium logo are trademarks of HP, IBM Corp. and Quantum in the U.S. and other countries.

* Other product and service names might be trademarks of IBM or other companies.

Notes:

Performance is in Internal Throughput Rate (ITR) ratio based on measurements and projections using standard IBM benchmarks in a controlled environment. The actual throughput that any user will experience will vary depending upon considerations such as the amount of multiprogramming in the user's job stream, the I/O configuration, the storage configuration, and the workload processed. Therefore, no assurance can be given that an individual user will achieve throughput improvements equivalent to the performance ratios stated here.

IBM hardware products are manufactured from new parts, or new and serviceable used parts. Regardless, our warranty terms apply.

All customer examples cited or described in this presentation are presented as illustrations of the manner in which some customers have used IBM products and the results they may have achieved. Actual environmental costs and performance characteristics will vary depending on individual customer configurations and conditions.

This publication was produced in the United States. IBM may not offer the products, services or features discussed in this document in other countries, and the information may be subject to change without notice.

Consult your local IBM business contact for information on the product or services available in your area.

All statements regarding IBM's future direction and intent are subject to change or withdrawal without notice, and represent goals and objectives only.

Information about non-IBM products is obtained from the manufacturers of those products or their published announcements. IBM has not tested those products and cannot confirm the performance, compatibility, or any other claims related to non-IBM products. Questions on the capabilities of non-IBM products should be addressed to the suppliers of those products.

Prices subject to change without notice. Contact your IBM representative or Business Partner for the most current pricing in your geography.



IBM



Smarter Computing



As our planet becomes smarter

We are seeing dramatic shifts that are changing the way the world works ... both business and society

 3 million new blog posts a day

 10 billion tweets a year

 3.5 billion pieces of content per week

Nothing is changing more than IT ...

The way it's accessed ...
Ubiquitously

The way it's applied ... for
insight

The way it's architected ...
Integrated & flexible

Enterprises are addressing the challenges that emerged during the last era of computing...



32.6 million servers worldwide

- **85% idle** computer capacity
- **15%** of servers run 24/7 without being actively used on a daily basis



1.2 Zetabytes (1.2 trillion gigabytes) exist in the “digital universe”

- **50%** YTY growth
- **25%** of data is unique; **75%** is a copy



Between 2000 and 2010

- servers grew **6x** ('00-'10)
- storage grew **69x** ('00-'10)
- virtual machines grew **51% CAGR** ('04-'10)



Data centers have **doubled** their energy use in the past five years

- **18%** increase in data center energy costs projected



Internet connected devices **growing 42% per year**



Since 2000 security vulnerabilities grew **eightfold**

...while IT budgets are growing less than 1% per year.

The IT conundrum—meeting exploding demand for service on a flat budget

Incomplete, Untrusted Data: Always Guessing

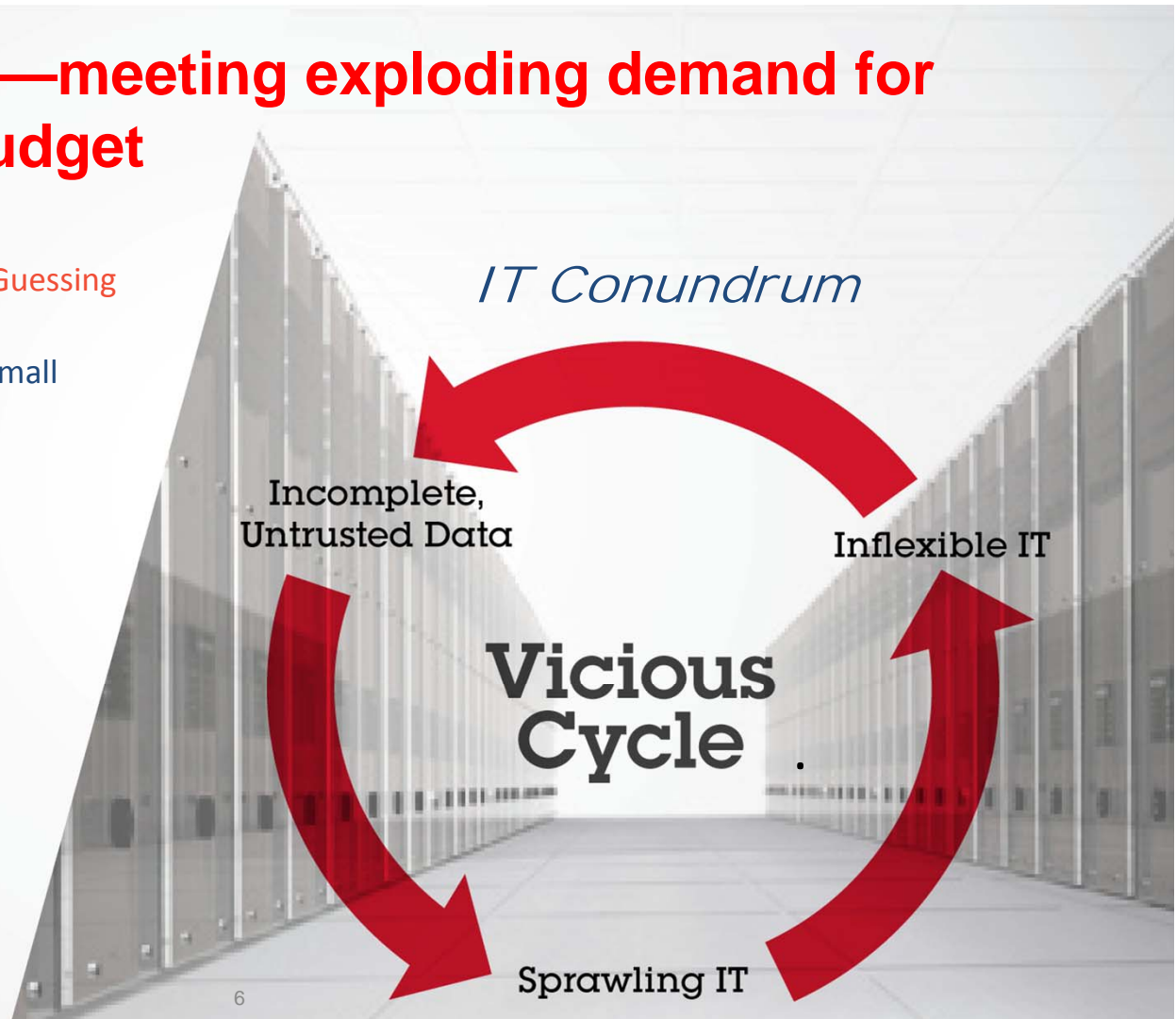
Decisions are made on incomplete data, big ideas are seen as risky, and small decisions aren't optimized.

Sprawling IT: More Cost

Every IT investment leads to more sprawl which drives up infrastructure and management costs.

Inflexible IT: Reactive

Inflexibility of infrastructure limits integration across silos and responsiveness to customer demands.





Any enterprise can reverse the IT conundrum by **designing, tuning and managing** their IT infrastructure in the new era of IT we call **Smarter Computing.**



Smarter Computing is an IT infrastructure that is designed for data, tuned to the task and managed in the cloud.



Designed for data: Big Data

Remove barriers to harnessing all available information and unlock insights to make informed choices.

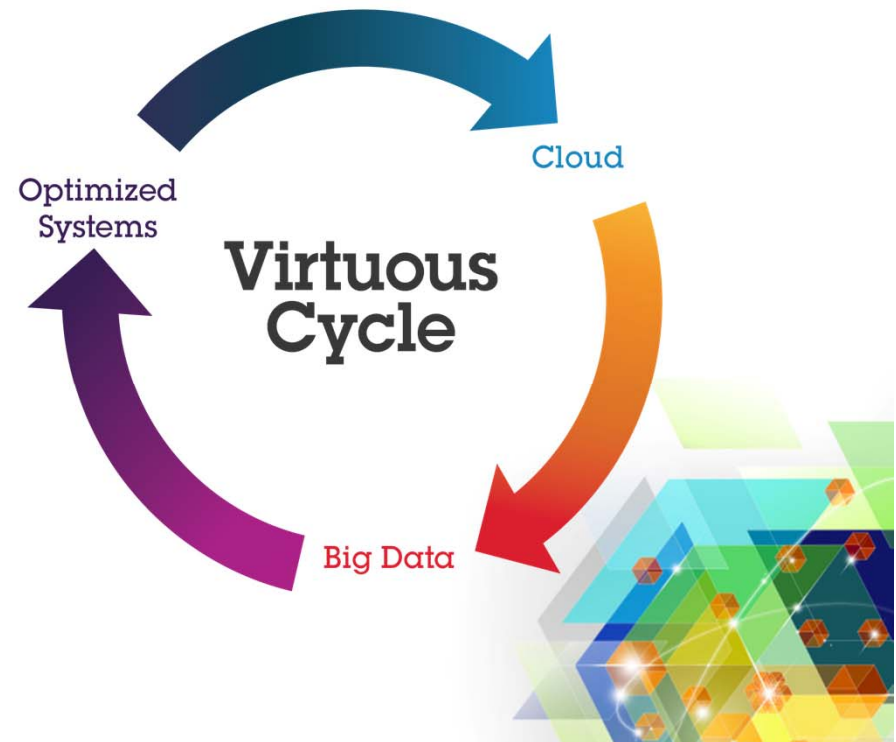
Tuned to the task: Optimized Systems

Remove financial barriers by driving greater performance and efficiency for each workload.

Managed in the Cloud: Cloud

Remove barriers to rapid delivery of new services and reinvent business processes to drive innovation.

Smarter Computing



On a **Smarter Planet**, successful enterprises are taking a new approach to designing their IT infrastructure to create **new opportunities**.



Create new markets in a fraction of time

Univerista di Bari

Reduced time to market for fishermen and farmers with cloud-based solution for real-time trading.



Deliver new services more quickly

Citigroup

Reduced provisioning times from 45 days to 20 minutes, improving ability to deploy new banking services to clients.



Identify new trends before competition

Acxiom

Improved capacity five-fold with no new floor space with cloud-based model improving customer retention and capturing new business.



Utilize IT resources more efficiently

City of Norfolk

Improved storage performance by 40% and cut power consumption in half, enabling it to deploy automated parking systems and police in-car video surveillance.





Thank you!

