



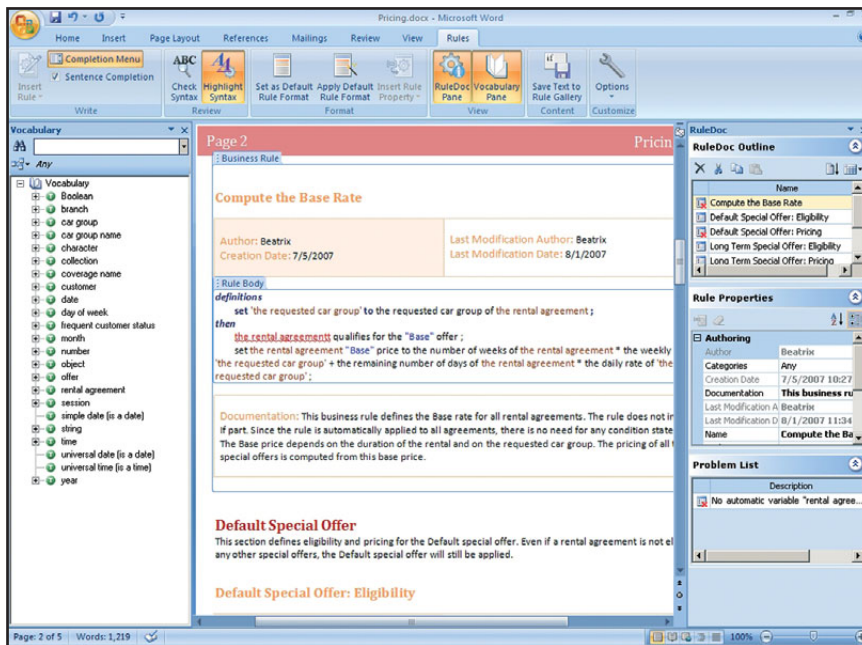
WebSphere® software

IBM WebSphere ILOG Rule Solutions for Office

Business experts can create and edit rules using familiar desktop tools

Highlights

- **Increases business user productivity**
- **Integrates with both JRules and Rules for .NET business rule management systems**
- **Extends rule management throughout the enterprise**



By loading a lightweight plug-in, Microsoft Word becomes a powerful rule authoring tool

Write business rules easily, safely and reliably

IBM® WebSphere® ILOG Rule Solutions for Office (RSO) is a business rule management system (BRMS) technology that lets non-technical business experts author and edit business rules using familiar desktop tools, while at the same time enforcing the underlying application requirements of the systems that will use these rules in the production environment.

Easily create business rules

By loading a lightweight plug-in for Microsoft® Office Word and Excel (2007), business users can work with file-based "ruledocs" in a guided manner, leveraging rule editors with auto-completion assistance from the highly successful IBM ILOG Intellirule technology. Business rules can easily be created using customized business terms and automatically validated for correct rule logic and syntax.

Take advantage of leading technologies

RSO lets users take full advantage of two outstanding technologies: WebSphere ILOG BRMS and Microsoft Office. Used widely, Microsoft Office has become a key office productivity tool—tapping into it with RSO helps users apply market-leading IBM ILOG technology for writing and deploying rules used by mission-critical applications. The synergy they deliver extends rule management across the enterprise by reducing the learning curve for business users.

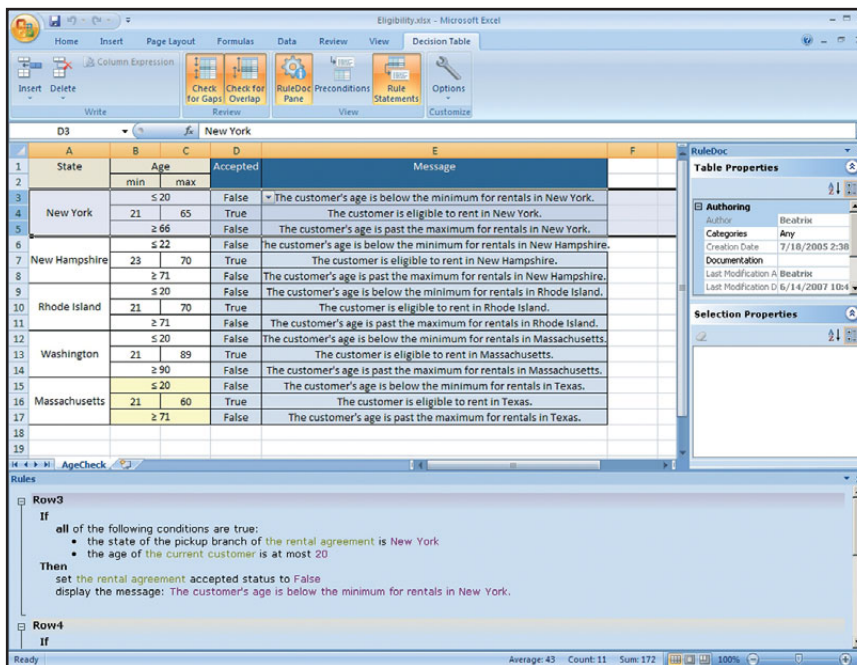
Seamlessly integrated rule editor

Users quickly learn how to write rules through a rule editor seamlessly integrated with Microsoft Word and Excel. Rule Solutions for Office fully supports editing and writing business rules in natural language syntax, while providing guidance to ensure rules adhere to the underlying requirements of the application that will use them. Rule Solutions for Office also facilitates the creation and maintenance of decision tables, highlighting problems such as gaps and overlaps in table data.

Cross-enterprise rule management

Rule Solutions for Office extends and facilitates rule management throughout the enterprise by providing the following benefits:

- *Ruledocs can be downloaded from the BRMS and edited offline.*
- *Structured rules and unstructured associated information can be combined together for documentation purposes.*
- *Ruledocs contain rule project metadata, allowing them to be synchronized with IBM WebSphere ILOG Rule Team Server—completed rule changes can be easily uploaded to the BRMS repository for testing, simulation, versioning and deployment.*
- *Rule Solutions for Office provides specialized toolbars for Microsoft Office Word and Excel, with viewing panes and lists specific to rule authoring and validation.*
- *Rule Solutions for Office can be used with both the IBM WebSphere ILOG JRules BRMS and IBM WebSphere ILOG Rules for .NET BRMS—the only BRMS solutions that offer this level of usability and integration with Microsoft Office for both Java™ and .NET rule-based applications.*



Using Rule Solutions for Office with Excel, decision tables can be easily modified and validated



For more information

To learn more about IBM WebSphere ILOG Rule Solutions for Office, please contact your IBM marketing representative or IBM Business Partner, or visit the following Web site:

<http://www.ilog.com/products/businessrules>.

© Copyright IBM Corporation 2009

IBM Corporation
Software Group
Route 100
Somers, NY 10589 U.S.A.

Produced in the United States of America
August 2009
All Rights Reserved

IBM, the IBM logo, ibm.com and WebSphere are trademarks or registered trademarks of International Business Machines Corporation in the United States, other countries, or both. If these and other IBM trademarked terms are marked on their first occurrence in this information with a trademark symbol (® or ™), these symbols indicate U.S. registered or common law trademarks owned by IBM at the time this information was published. Such trademarks may also be registered or common law trademarks in other countries. A current list of IBM trademarks is available on the Web at "Copyright and trademark information" at ibm.com/legal/copytrade.shtml

Java and all Java-based trademarks and logos are trademarks of Sun Microsystems, Inc. in the United States, other countries, or both.

Microsoft is a trademark of Microsoft Corporation in the United States, other countries, or both.

Other product, company or service names may be trademarks or service marks of others.



Recyclable, please recycle.