



IBM Lotus Workplace: Domino Integration

Introduction:

Our Intent in this lab is to demonstrate how Lotus WorkPlace can integrate content coming from a Domino Server using out of the box WebSphere Portal Server V5 portlets.

Assumptions and description of the Software Stack.

The Following products are installed on your system:

Microsoft Windows 2000 Server Service pack 5.

IBM WebSphere Portal 5 Extend

IBM Lotus WorkPlace 1.1

IBM Directory Server 5.1 used as the Directory Server

IBM Lotus Domino V 6.5 (used as an Application and Directory Server for Domino Applications).

The host name for Lotus WorkPlace is: piclotus6.dfw.ibm.com running on port 9081
([http:// piclotus6.dfw.ibm.com:9081](http://piclotus6.dfw.ibm.com:9081))

The host name for Domino Server 6.5 is: domino65.dfw.ibm.com running on port 81
([http:// piclotus6.dfw.ibm.com:81](http://piclotus6.dfw.ibm.com:81))

Here are the different userID and password used for this demo

Username:db2admin

Password:p8ssw0rd

The Portal Administrative credentials are defined as:

Username:wpsadmin

Password: p8ssw0rd

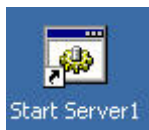
Surfacing Domino Content in Lotus Workplace using Lotus Notes View Portlet

Launch Portal Server and all supporting products in the following order:

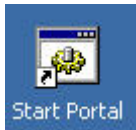
1 - Launch IDS from the services window

IBM Directory Admin Daemon	Administer IBM Directory	Started	Automatic
IBM Directory Server V5.1	IBM Directory Server V5.1	Started	Automatic
IBM HTTP Administration 1.3.26	IBM HTTP SERVER/1.3.2...	Started	Automatic

2 - Launch WebSphere Application Server by executing the batch file "Start Server1" located on the desktop



3 - Launch WebSphere Portal Server by executing the batch file "Start Portal"



4 - Go to the services window and start IBM WebSphere Application Server V5 – Workplace to start Lotus Workplace

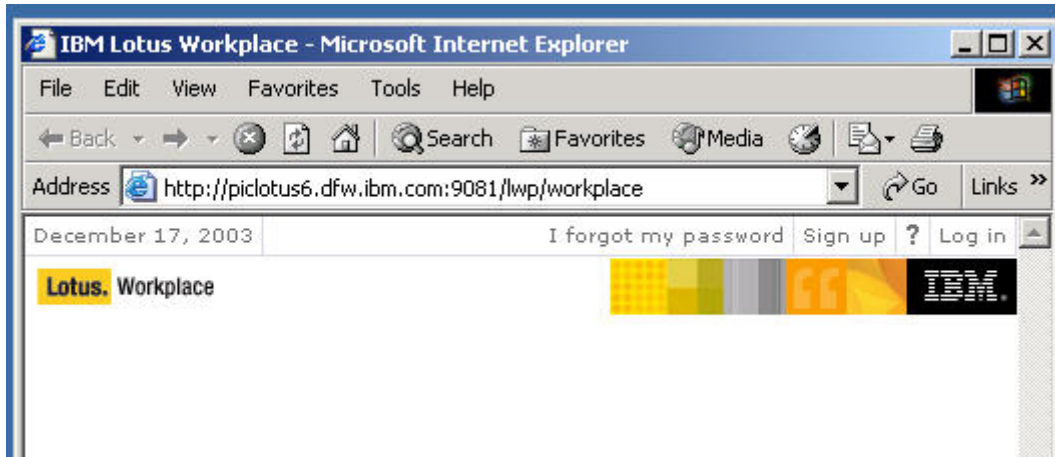
IBM WebSphere Application Server V5 - server1	Controls the running of a...	
IBM WebSphere Application Server V5 - Workplace	Controls the running of a...	Started
Indexing Service	Indexes contents and pro...	

5 – Go to the Start button and Start Lotus Domino Server

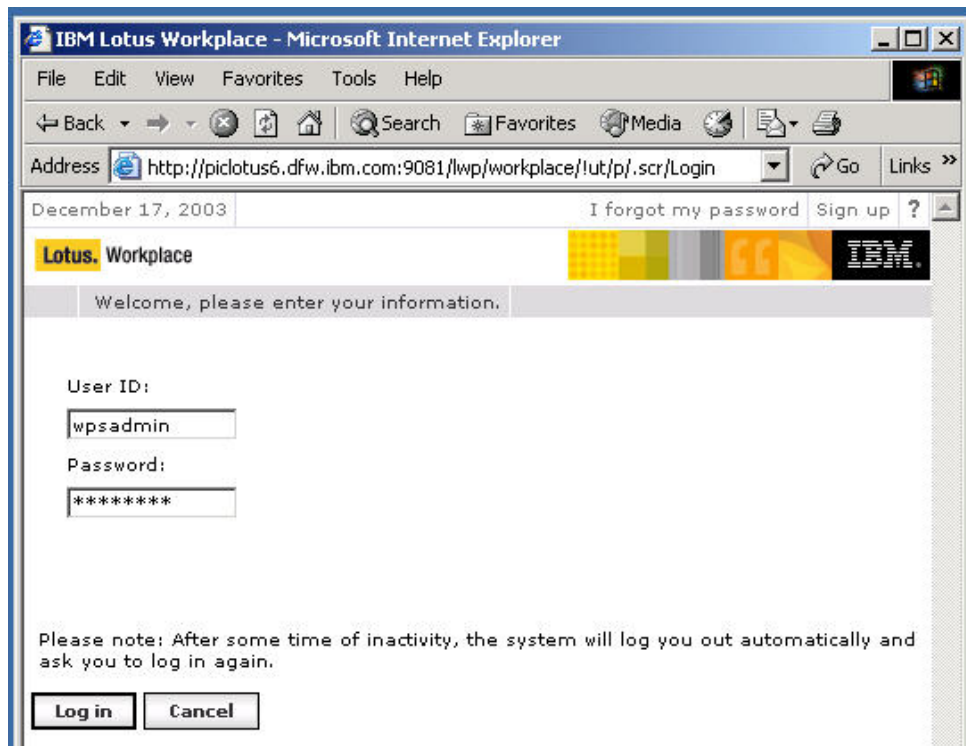


IBM Lotus Workplace: Domino Integration

Once you have all the supporting products started, launch Internet Explorer and go to the following URL: <http://piclotus6.dfw.ibm.com:9081/lwp/workplace>



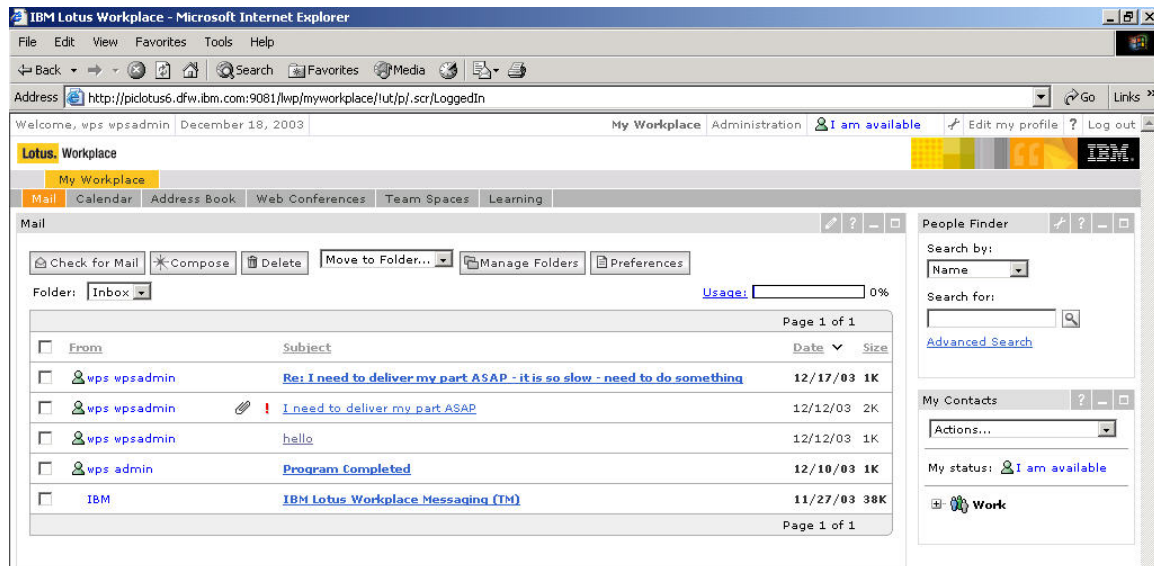
In the upper left corner of the Lotus Workplace page, click the “Log in” button to enter Lotus Workplace using the userID `wpsadmin` along with the following password: `p8ssw0rd`



Click the Log in button and to validate your credentials.

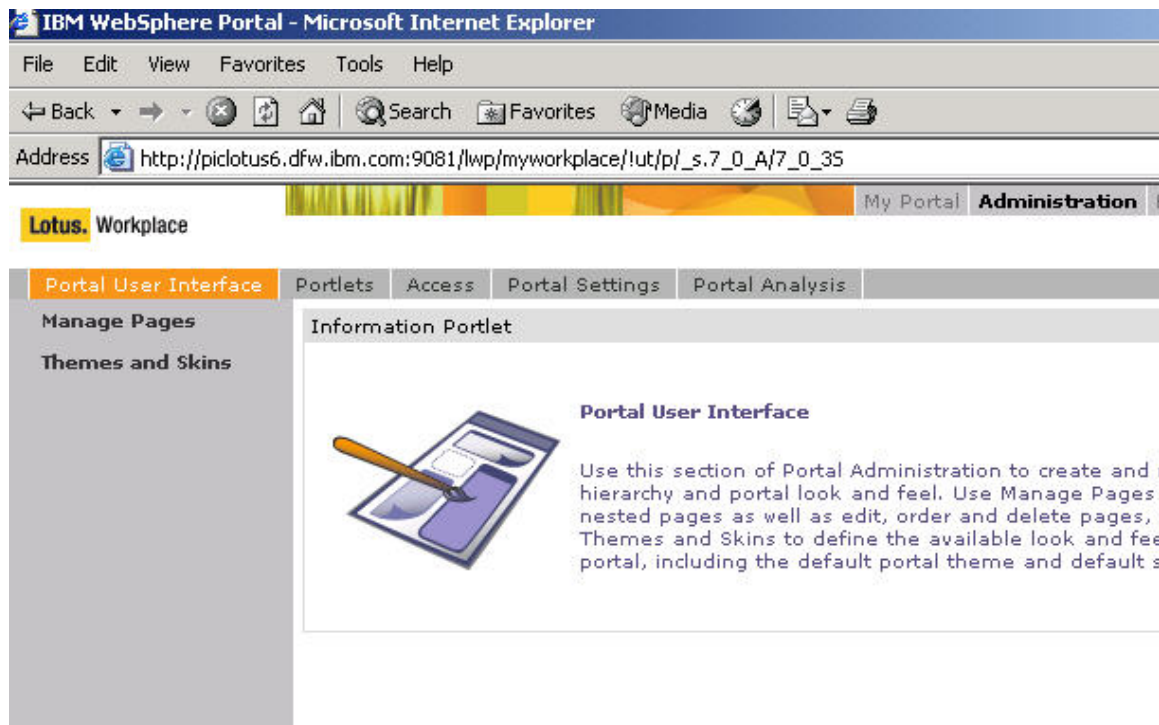
IBM Lotus Workplace: Domino Integration

You should be presented with the Welcome page of wpsadmin in Lotus Workplace



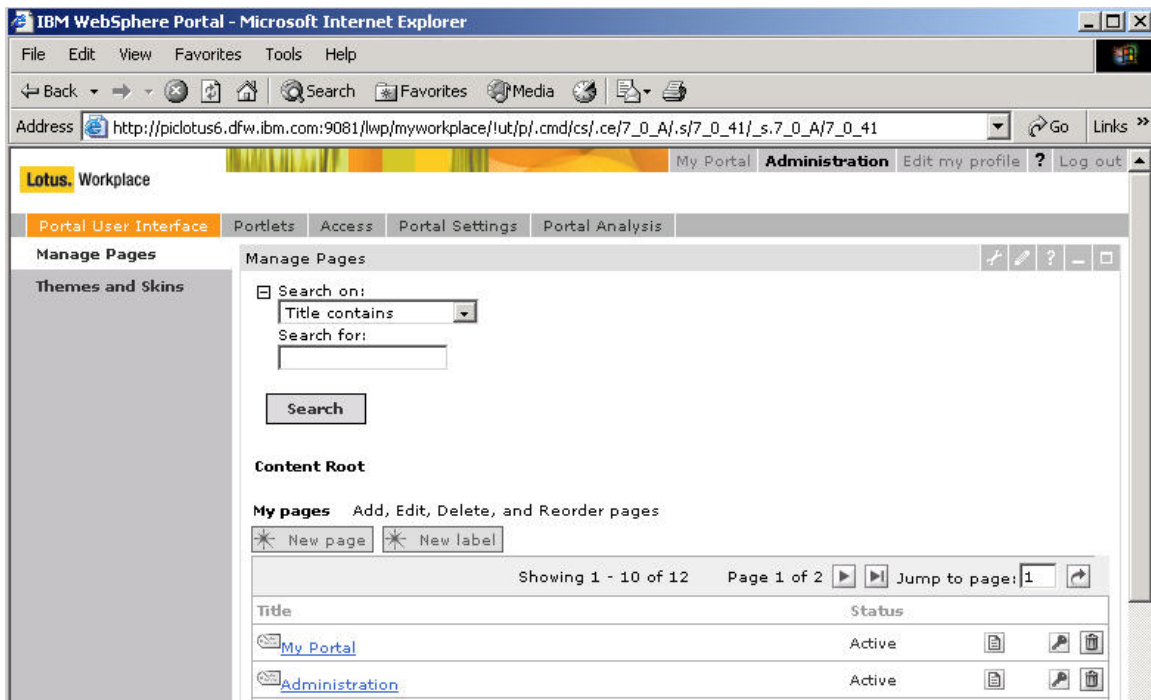
In the next step, we are going to create a new place called “Domino Integration” where Lotus Notes View portlet will be placed.

In the upper right corner, click on the Administration link

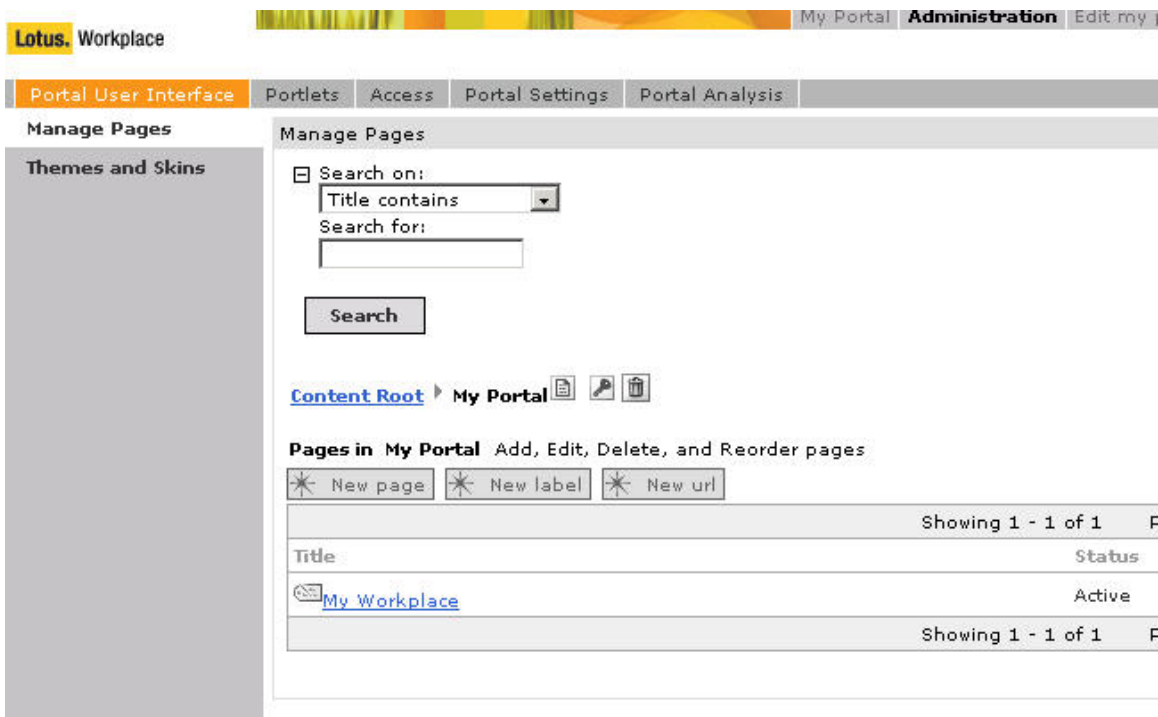


Click on the Manage Pages hyperlink

IBM Lotus Workplace: Domino Integration

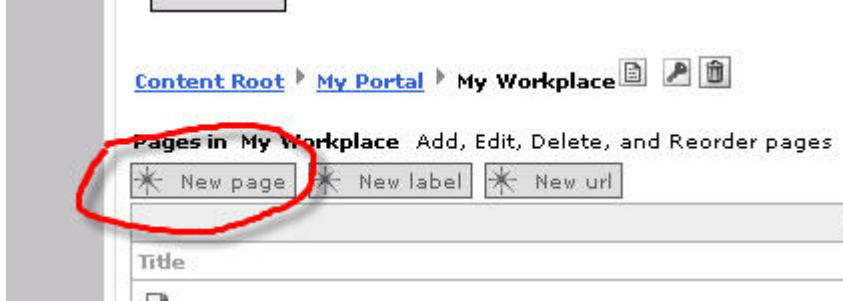


then click on the Active page called My Portal, then in the following screen click on the hyperlink called My Workplace

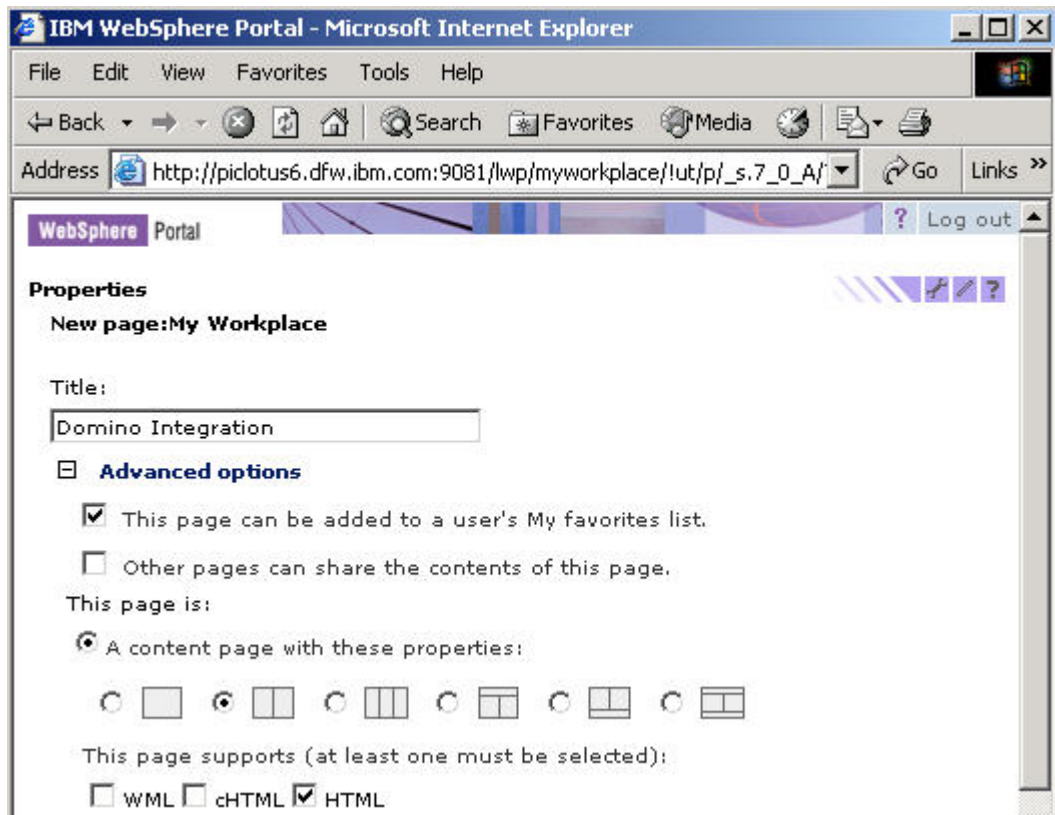


IBM Lotus Workplace: Domino Integration

Click on the “New page button”

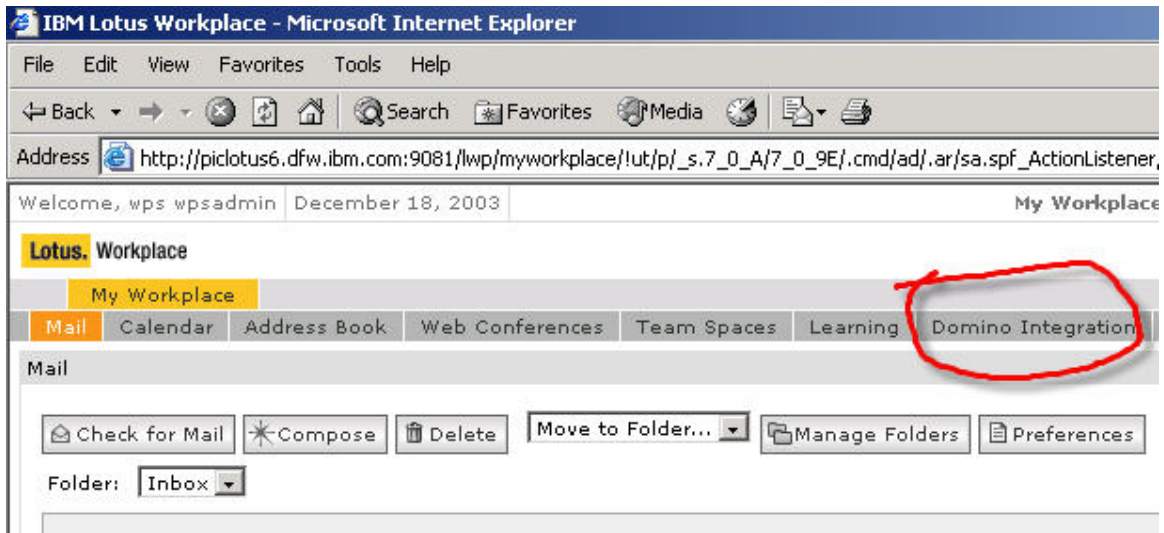


Fill in the name of the page “Domino Integration” with the following advanced options then press the OK button on the current window along with the next window where you will be notified of the creation of the page



IBM Lotus Workplace: Domino Integration

In the upper corner left of the screen, if you click on the My Portal hyperlink, you should be able to see that there is a new page called Domino Integration

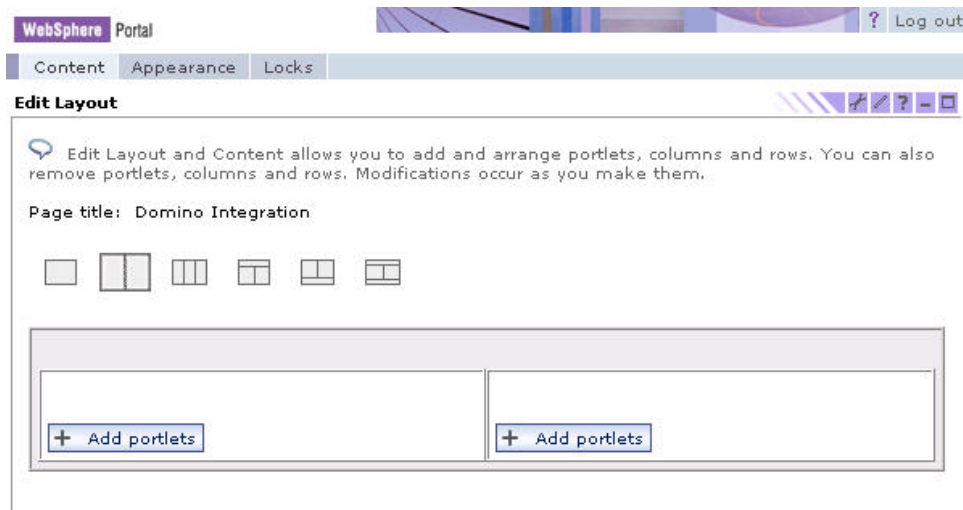


Click on the Domino Integration Link to go to the new page. The page is actually empty since we did not add any portlet yet.

Go to the administration page once again, select Manage Pages. In front of the Domino Integration page, Select the edit layout icons to add portlets in the page

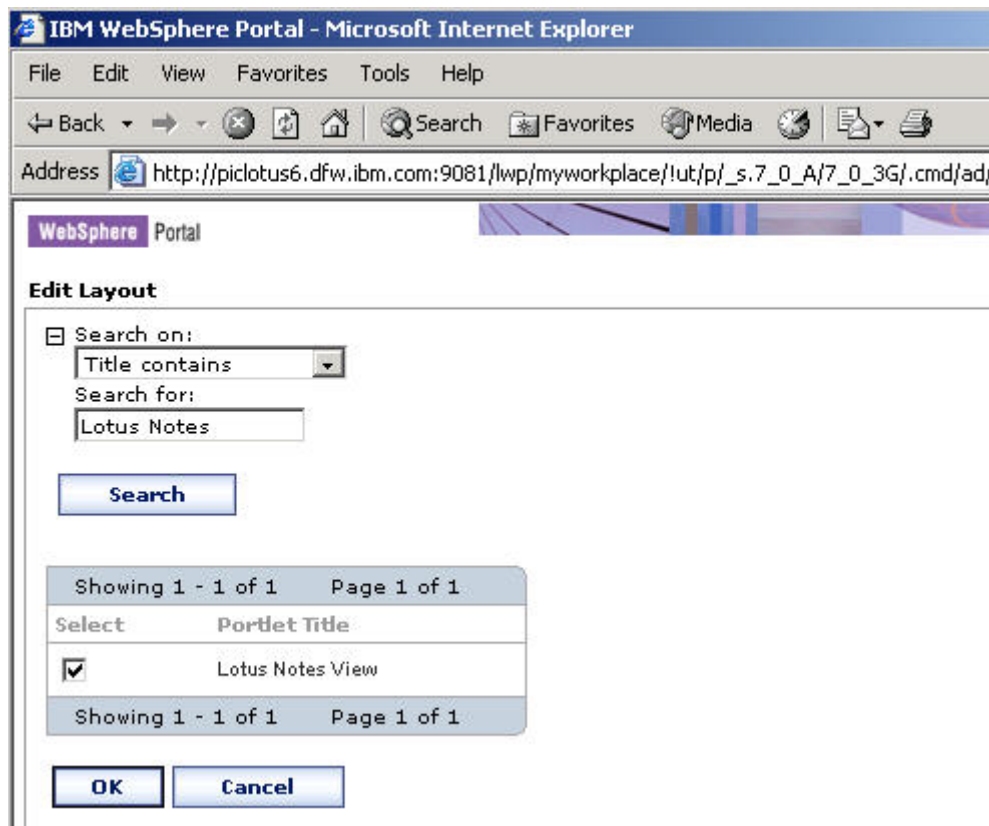


You should be presented with a portal page with buttons allowing you to add portlets



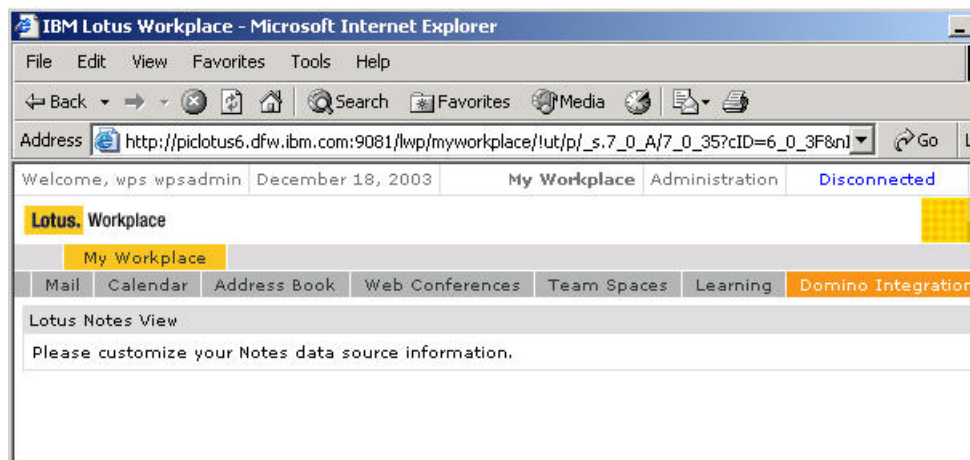
Click on the Add portlets button and search for Lotus Notes

IBM Lotus Workplace: Domino Integration



Check the box for in front of Lotus Notes View and press Ok. The portlet should received a notification saying the portlet was added to the page. Press Done in the notification window.

In the following window, select My Portal link in the upper corner right and go to the Domino Integration page. You should see that the portlet is not customize yet.



In the icon bar of the portlet, select the Edit icon () to configure the portlet.

Work with Notes Views



Below is a list of available Notes Views. An available view has all necessary properties preset to display information from a Notes database on a Notes Domino server. You can create a new view, edit an existing view, create a new view by copying an existing view, delete a view, or change the view order.

Available Views

The 'Available Views' dialog box features a large empty rectangular area for a list of views. To the right of this area are four action buttons: '+ Add', a pencil icon for 'Edit', a document icon for 'Copy', and a minus sign for 'Delete'.

Click on the Add icon to add a new view.

In the next window, type the following informations

View Title: people

Server: domino65.dfw.ibm.com:81 then press the validation icon

()

View Title:

People

Server:

domino65.dfw.ibm.com:81 

IBM Lotus Workplace: Domino Integration

pick the names.nsf DB in the list of Databases. The real name of the DB is ibm directory
press the validation icon () and select the people view in the view list displayed

Database filename:

Database:

View:

In the bottom of the page, press the next button and configure the next window according to the image displayed below

Columns

Column for showing people awareness:
(Column must contain names)

Column for launching documents:

Columns to hide:
(Ctrl-click to select multiple columns)

Press the "Done" button.

IBM Lotus Workplace: Domino Integration

You should have a new Available view listed. You can repeat this configuration to add some additional views such as log.nsf or some help DBs. Since the Lotus View portlet allows you to select view within the portlet, you should be able to switch from one view to the other without having to reconfigure the portlet

Press “Save” button.

You should be re-directed to the Domino Integration page with content available in the Lotus Notes View portlet

Select the View: People in the drop Down list to view the people view.

You should be presented with the content of the view with J2EE presence awareness

IBM Lotus Workplace - Microsoft Internet Explorer

File Edit View Favorites Tools Help

Back Forward Stop Home Search Favorites Media Print

Address http://piclotus6.dfw.ibm.com:9081/lwp/myworkplace!lut/p/_s.7_0_A/7_0_P1/.cmd/ad/.ar/sa.PortletView Go

Welcome, wps wpsadmin December 18, 2003 My Workplace Administration I am available Edit

Lotus Workplace

My Workplace

Mail Calendar Address Book Web Conferences Team Spaces Learning **Domino Integration**

Lotus Notes View

Launch Application

View

	Name	Telephone	Company	E-Mail
	admin , domino			domino_admin/ibm @ ibm
	wpsadmin			wpsadmin @ ibm

Server: domino65.dfw.ibm.com:81 | Database: names.nsf

Launch Application

Since SSO is configured between Lotus Workplace and the Domino Server, if you click on the Launch Application icon, you should be able to see the names.nsf in a new browser window without being prompted for authentication.