

December 2008

IBM z/OS HCD & HCM

Newsletter No 28



HCM on a Linux workstation

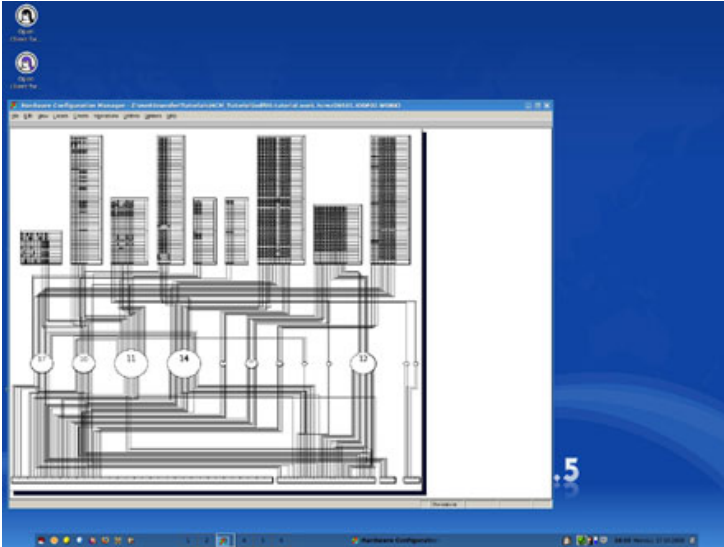
Contact: ibmhcd@de.ibm.com
ibmhcm4z@cn.ibm.com

From the Böblingen Development Team

December, 2008

HCM on a Linux Workstation

You can easily run the HCM client application on a Linux® workstation. HCM runs on Linux if Wine is installed on your Linux workstation.



Prerequisites

HCM

As a prerequisite you must install [HCM APAR IO09670](#).

Wine

Wine basically is a compatibility layer that is either already installed or an installable part of the most common Linux workstation distributions.

Ensure that Wine is running on your Linux workstation. You can check this by entering

```
wine --version
```

in a Linux command shell.

If installed, this command returns program version information, e.g.:

```
@ibm ~/~>wine -- version  
wine- 1.0
```

If Wine is not installed download it from the [Wine homepage](#) or your distributor homepage.

Read more about Wine in the [Wine User Guide](#).

HCM Help

The current Wine project does not properly support the current chm help file format of Microsoft Windows®, which is used by z/OS V1R10 HCM. If you want to use the context-sensitive help, you need an additional chm viewer, for example [xCHM](#).

Note that most help viewers do not support JavaScript®. Dependant on the selected help viewer, the help layout may differ from the familiar Windows help layout.

HCM Installation

Either simply start the Windows HCM installation under Wine by entering

```
wine<HCM installer name>
```

in your Linux command shell, e.g.

```
@ibm ~/>wine eeqinstx.exe
```

or copy your complete HCM program directory (including eeqhc.exe, DLL's, all subdirectories, etc.) into your appropriate Linux partition and directory.

Customization

If you want to run a help viewer you have to add some additional information into HCM's ini-file EEQHCM.INI.

The example data are for the xCHM help viewer:

- If there is no EEQHCM.INI in Wine's Windows directory, copy one from your Windows system or create the file yourself (e.g. by simply starting HCM on Linux).
By default, Wine's Windows directory is:

```
~/.wine/drive_c/windows/.
```

- Enter the following lines into the EEQHCM.INI:

```
[Linux]
Linux=true
LinuxHelpProg=/usr/local/bin/xchm
LinuxHelpPath=~/.wine/drive_c/Program\ Files\IBM Hardware\
Configuration\ Manager
LinuxHelpProgParam=-c
```

The [Linux] section above is required to run HCM on Linux.

Parameter `Linux` is required to decide whether HCM runs on Linux (`Linux=true`) or on Windows (`Linux=false`).

If you run HCM versions starting with z/OS V1R10 the following additional parameters must be set as well:

`LinuxHelpProg`, which stores the executable of the chm viewer, and `LinuxHelpPath`, which stores the corresponding chm file.

If you don't know where the help viewer is stored, you can check it by using the `which` command in your Linux command shell.

Example xCHM:

```
@ibm ~/~>which xchm
/usr/local/bin/xchm
```

`LinuxHelpProgParam` is an additional parameter for the help viewer (e.g. it is used by the xCHM help viewer to display the correct help context.)

Note: If there are blanks in your paths you must enter an additional backslash before the blanks (e.g. directory "Program Files\IBM Hardware Configuration Manager" must be specified as "Program\ Files\IBM\Hardware\Configuration\Manager")

Start HCM

To start HCM, go to the directory where your `eeqhc.exe` is located and enter:

```
wine eeqhc.exe
```

in your Linux shell.

Terms and Conditions

Please note that – even if functionally equivalent – IBM currently can give no warranty for running HCM on Linux. Running HCM on Linux currently is mainly for demonstration purposes.

Running HCM on Linux has been tested with Wine version 1.0 and z/OS V1R8 HCM and later.

More information

It is not mandatory to have the newest version of Wine on your Linux workstation.

For more information on Wine see [Wine HQ](#).

For details on xCHM help viewer see [xCHM](#).