

February 1998

IBM z/OS HCD & HCM

Newsletter No 18



HCM support for Windows 95, Windows NT and Named Views

Contact: ibmhcd@de.ibm.com
ibmhcm4z@cn.ibm.com

Latest HCM enhancements

From the Böblingen HCD/HCM Team
February 1998

Windows NT and Windows 95 Support of HCM

Service Level 13 of HCM 1.1.0 and Service Level 2 of OS/390 2.4.0 HCM now provide the capability to run HCM on Windows NT or Windows 95 workstations. The installation of HCM on a Windows NT/95 PWS is identical to the installation on a Windows 3.1 PWS, with one additional selection: after downloading all necessary files, all 3 parts (HCM-BASE, HCM-ENGL, and HCM-NT/95) are to be selected during execution of the install utility. To establish an APPC connection to the host, HCM requires that IBM Personal Communications for Windows NT/95 Version 4.11 (or later) be installed on the workstation. More details, including a small sample of an APPC setup, can be found on the HCM home page on the World Wide Web (<http://www.ibm.com/servers/eserver/zseries/zos/hcm/>).

Named Views and Enhanced Filter Capabilities

Service Level 2 of OS/390 2.4.0 HCM provides two new interesting enhancements:

- Named Views
- Enhanced Filtering Capabilities

Named Views

HCM has always provided flexible filtering mechanisms--such as selection of classes of objects, explicit inclusion and exclusion of objects, and cropping--to allow the user to tailor the HCM diagram so that it shows only those objects that are of interest. The **Named Views** enhancement extends these capabilities by consolidating all view-related criteria onto a single dialog, and allowing these criteria to be saved under a user-specified name for later recall.

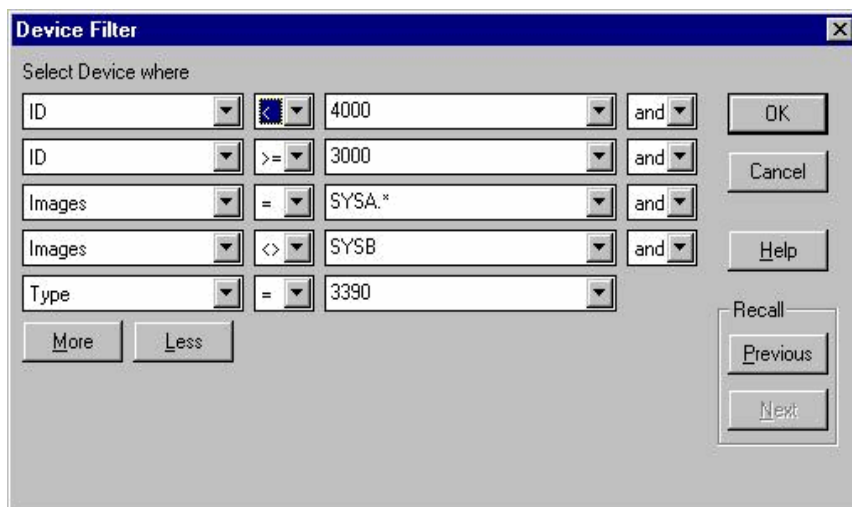
For instance, you may have filtered the diagram to select a set of some important DASD devices to create a printed report. Now this view can be saved under an appropriate name so that it can be recalled later, perhaps to print a new version of the report.

Another potentially useful capability of **Named Views** is to create views that show all objects connected to a particular processor or partition, possibly filtered by controller type. For instance, in a configuration where a processor has a test image and a production image, it may be beneficial to create one view for the production equipment and another view for the test equipment.

Named Views can be saved for work (*.HCM) as well as for production (*.HCR) configuration files.

Enhanced Filtering Capabilities

The second enhancement of Service Level 2 of OS/390 2.4.0 HCM is the **Enhanced Filtering Capabilities**. This feature dramatically improves the dialogs that appear from the *Edit* and *Locate* menus. The new dialogs arrange the object attributes into columns, and allow the objects to be sorted according to any attribute simply by clicking the column header. The number of attributes that can be displayed has been extended to include all conceivable items of interest, including user-defined attributes, and the dialogs may be customized to exclude or include any set of attributes or to change their order of appearance. In addition, a subdialog allows flexible SQL-like filters to be created using an intuitive point-and-click interface.



These dialogs open up a number of interesting possibilities besides editing and locating individual objects. For instance, these lists may also be used by themselves to query the contents of the configuration according to nearly any criteria. The illustration above, for example, shows a query for devices

of a specific type (3390) within a specific range (3000-3FFF) which are available to any image on a particular processor (SYSA) but not accessible to another processor (SYSB). The resulting list is shown below..

ID	Type	Class	Images	Description	OS Confgs
+ 3000,32	3390	DASD	SYSA.MVSPROD	System data	MVSPROD OS390240
+ 3100,64	3390	DASD	SYSA.MVSPROD SYSA.MVSTEST	HPF-Data	OS390240
+ 3400,32	3390	DASD	SYSA.MVSPROD SYSA.MVSTEST	DASD String Usage: N.A.	MVSPROD OS390240 OS390TST
+ 3A00,32	3390	DASD	SYSA.MVSPROD SYSA.MVSTEST	DASD String - usage: S.A.	OS390240 OS390TST
3E50,32	3390	DASD	SYSA.MVSPROD	Data Storage for A.P.	OS390240
3E50	3390	DASD	SYSA.MVSPROD	Data Storage for A.P.	OS390240
3E51	3390	DASD	SYSA.MVSPROD	Data Storage for A.P.	OS390240
3E52	3390	DASD	SYSA.MVSPROD	Data Storage for A.P.	OS390240
3E53	3390	DASD	SYSA.MVSPROD	Data Storage for A.P.	OS390240
3E54	3390	DASD	SYSA.MVSPROD	Data Storage for A.P.	OS390240
3E55	3390	DASD	SYSA.MVSPROD	Data Storage for A.P.	OS390240
3E56	3390	DASD	SYSA.MVSPROD	Data Storage for A.P.	OS390240
3E57	3390	DASD	SYSA.MVSPROD	Data Storage for A.P.	OS390240
3E58	3390	DASD	SYSA.MVSPROD	Data Storage for A.P.	OS390240
3E59	3390	DASD	SYSA.MVSPROD	Data Storage for A.P.	OS390240
3E5A	3390	DASD	SYSA.MVSPROD	Data Storage for A.P.	OS390240
3E5B	3390	DASD	SYSA.MVSPROD	Data Storage for A.P.	OS390240
3E5C	3390	DASD	SYSA.MVSPROD	Data Storage for A.P.	OS390240
3E5D	3390	DASD	SYSA.MVSPROD	Data Storage for A.P.	OS390240
3E5E	3390	DASD	SYSA.MVSPROD	Data Storage for A.P.	OS390240
3E5F	3390	DASD	SYSA.MVSPROD	Data Storage for A.P.	OS390240

3E60	3390	DASD	SYSA.MVSPROD	Data Storage for A.P.	OS390240
3E61	3390	DASD	SYSA.MVSPROD	Data Storage for A.P.	OS390240
3E62	3390	DASD	SYSA.MVSPROD	Data Storage for A.P.	OS390240
3E63	3390	DASD	SYSA.MVSPROD	Data Storage for A.P.	OS390240
3E64	3390	DASD	SYSA.MVSPROD	Data Storage for A.P.	OS390240
3E65	3390	DASD	SYSA.MVSPROD	Data Storage for A.P.	OS390240
3E66	3390	DASD	SYSA.MVSPROD	Data Storage for A.P.	OS390240
3E67	3390	DASD	SYSA.MVSPROD	Data Storage for A.P.	OS390240
3E68	3390	DASD	SYSA.MVSPROD	Data Storage for A.P.	OS390240
3E69	3390	DASD	SYSA.MVSPROD	Data Storage for A.P.	OS390240

Documentation Update

A user's guide update for the *Windows NT and Windows 95 Support* of HCM (both versions) as well as for the *Named Views and Enhanced Filter Capabilities* (OS/390 2.4.0 HCM SL 2) is available from the HCM home page in the internet (in PostScript and APF format):

<http://www.ibm.com/servers/eserver/zseries/zos/hcm/>

PTFs for HCM and HCD

The PTFs for HCM 1.1.0 Service Level 13 provide the *Windows NT and Windows 95 Support*. The PTFs for OS/390 2.4.0 HCM Service Level 2 provide the *Windows NT and Windows 95 Support* as well as the *Named Views and Enhanced Filtering Capabilities*.

HCM 1.1.0 Service Level 13	OS/390 2.4.0 HCM Service Level 2
UR90289 UR90290	UR90291 UR90292

For HCD in conjunction with the use of HCD the following PTFs are recommended to be installed:

HCD 5.1	HCD 5.2	OS/390 1.3.0 (and 2.4.0)
UW90190	UW90193	UW90393
UW90191	UW90194	UW90394
UW22716	UW22782	
UW23731	UW23778	
UW90260	UW90263	
UW90261	UW90264	
UW28016	UW28017	
UW31379	UW31455	
UW34593	UW34594	
UW34596	UW34647	
UW40336	UW40337	UW40338
UW40402	UW40403	UW40404
UW45492	UW45493	UW45516

HCD/HCM Internet Home Page

The HCD/HCM Internet Home page has been moved to the brand-new S/390 G4 Enterprise Server in the United States.

<http://www.ibm.com/servers/eserver/zseries/zos/hcm/>

All the HCD/HCM newsletters are available from this home page. We offer also an e-mail notification service whenever a new issue of the Newsletter is available.

[HCD / HCM home page](#)