



**Infoprint Manager Print-on-Demand
Feature:
Submit Express for Windows
README**

Contents

Infoprint Manager Print-on-Demand

Feature:

Submit Express for Windows

README	1
Windows System Requirements	1
Installing Submit Express from the Infoprint Manager Print on Demand CD-ROM	1

Installing a service update for Submit Express . . .	1
Installing associated software and printer drivers . . .	2
Starting Submit Express	2
Migrating job tickets from previous versions of Infoprint Submit for Windows	4
Notices	5
Trademarks.	7

Submit Express for Windows README Infoprint Manager Print-on-Demand Feature:

IBM will update the web version of this document regularly. For the latest information on this Infoprint client, access the IBM Printing Systems website at <http://www.ibm.com/printers>. Under **Resources** For click **Infoprint Manager**. Under **Products** in the right hand navigation bar, click **Infoprint Manager for AIX**. Under **Product Resources** click **Product Library**.

This README file contains the following sections:

- “Windows System Requirements”
- “Installing Submit Express from the Infoprint Manager Print on Demand CD-ROM”
- “Installing associated software and printer drivers” on page 2
- “Starting Submit Express” on page 2
- “Migrating job tickets from previous versions of Infoprint Submit for Windows” on page 4

Windows System Requirements

Submit Express has these requirements:

- PC with 166 MHz Pentium processor or higher
- Windows NT 4.0 with Service Pack 6a or Windows 2000
- 64 MB RAM or more
- 10 MB hard drive space
- CD-ROM drive
- TCP/IP local area network (LAN) connection (Ethernet or token-ring)
- Network connectivity, with a user ID having permission to submit print jobs and perform queries

Installing Submit Express from the Infoprint Manager Print on Demand CD-ROM

This section contains information that you need to install Submit Express on Windows workstations.

1. Insert the appropriate Infoprint Manager for Print-on-Demand Feature (1 of 2) CD-ROM into the drive.
2. The install program will start automatically.
3. Select the Install Submit Express button to start the install program.
4. Follow the instructions as directed from the installer. The default install directory is c:\Program Files\IBM\Infoprint Submit Express.

Installing a service update for Submit Express

To install a service update, insert the PTF CD-ROM into the drive. The install program starts automatically.

1. Select to install **Submit Express**.

2. Follow the instructions as directed from the installer.

Notes:

- a. With Infoprint Manager for AIX, you must have the Version 4.1 level of Infoprint Submit installed for the service update to install correctly. If you are currently using Version 3.2, first install the Version 4.1 product and then install the service update as described above.
- b. With Infoprint Manager for Windows, you must have the Version 2.1 level of Infoprint Submit installed for the service update to install correctly.

Installing associated software and printer drivers

If you wish to create PostScript jobs for Infoprint Manager, you should install printer drivers and PostScript Printer Description files (PPDs) on each of the systems that you use for this purpose. Printer drivers are needed on the workstations that are used to submit jobs to the Infoprint Manager server to ensure that the correct driver is used. In addition, if you have users who are producing PostScript files on their workstations that they want printed on the Infoprint Manager printers, you need to load Infoprint Manager printer drivers onto these workstations.

To install a PostScript driver, go to the Adobe Systems World Wide Web homepage at www.adobe.com and download the correct level of PostScript driver for your system and PostScript printing needs.

Four PPDs are provided on the Infoprint Manager for AIX Print-on-Demand Feature CD. These PPDs support the Infoprint 60, InfoColor 70, Infoprint 4000, and Infoprint 4100 printers; they can be used on workstations that generate PostScript output.

Starting Submit Express

1. Click on the **Infoprint Submit Express** icon that was automatically added to the desktop after installation



Figure 1. IBM Infoprint Submit Express shortcut

or, on Windows, from the **Start** menu, go to **Programs** and click on **Infoprint Submit Express**.

2. When you start the program the first time, the following message displays:



Figure 2. Message displayed first time Infoprint Submit Express starts

3. Click **OK** and Infoprint Submit opens.
4. Go to the **Options** menu, and select **Settings**. The **Settings** dialog displays.

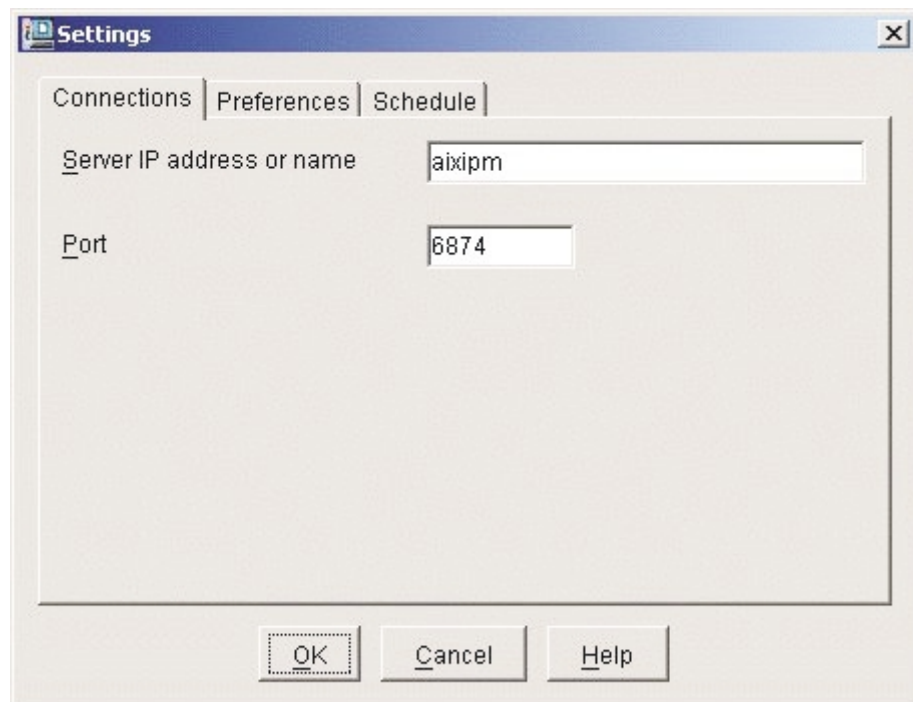


Figure 3. The Settings Dialog Connections Tab

5. Enter the IP address for your Infoprint Manager Server.
6. Let the port number default.
7. Select the **Preferences** tab.

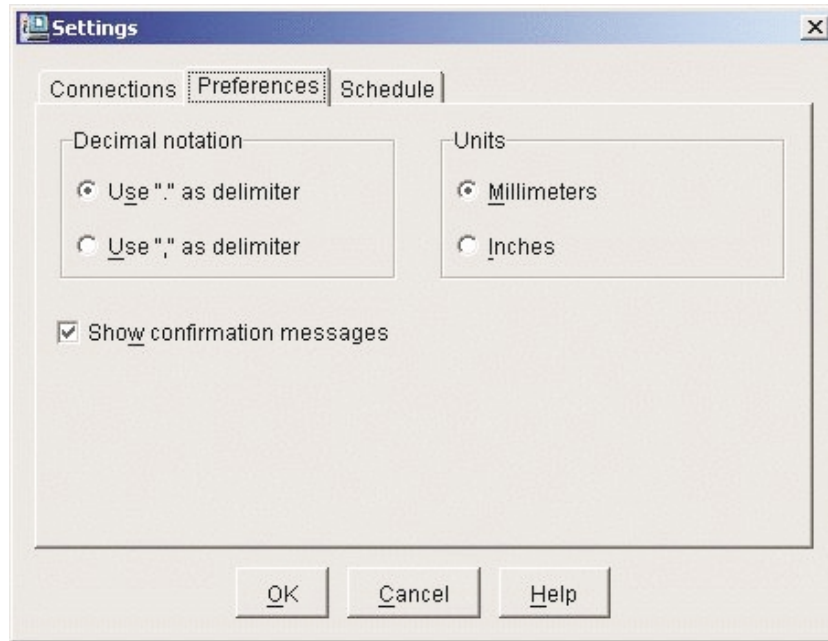


Figure 4. The Settings Dialog Preferences Tab

8. Select your preferences for **Decimal notation** and **Units** of measure.
9. Click **OK** to return to the main Infoprint Submit Express screen.

Note: If you are working in a non-DNS environment follow these steps:

1. Find the file named HOSTS in this directory path:
C:\WINNT\system32\drivers\etc.
2. Add a line in the HOSTS file, in the format
`xxx.xxx.xxx.xxx hostname`

where `xxx.xxx.xxx.xxx` is the IP address of the machine where the server is running and `hostname` is the name of the machine where the server is running.

Migrating job tickets from previous versions of Infoprint Submit for Windows

To migrate job tickets from a version of Infoprint Submit on Windows to the current version of Submit Express, do the following:

1. From the previous version of Infoprint Submit, open the job ticket you want to migrate.
2. Submit the job using the Hold option:
 - Open the Ticket menu and select Submit Job to submit the job.
 - Select the Schedule tab from the Submit dialog.
 - Select Hold from the RIP options group box.
 - Click OK to submit the job.
3. Select **Options** → **Job Status** to open the Job Status dialog.
4. Do the following to copy the contents of the job ticket file to a text file:
 - Select the ticket you want to migrate.
 - Click the **View Ticket** button to open the Job Ticket window.

- Highlight the entire contents of the job ticket file.
 - Copy the contents of the job ticket file to the clipboard. (For Windows systems, press Ctrl+C.)
 - Open a new file in a text editor.
 - Paste the job ticket file contents into this new file. (For Windows systems, press Ctrl+V.)
 - Save the file. (Be sure this file has an extension of .jtk.)
5. Transfer all source files listed in your job ticket file, and the converted job ticket file, to the system that has the version of Submit Express. Save them in a directory where they can be easily located.
 6. In your version of Submit Express, select **Ticket** → **Open** to open the job ticket that you created with the previous level of Submit. A dialog will open, asking you to select the language that was used to create the job ticket file. Choose a language from the drop-down list. When you select OK, the job ticket will be converted to the new format and will be opened.

Note: An error may occur the first time you assign a source file to the migrated job ticket if the path to the file has changed. Use the Browse function to locate the file, and Submit Express will save the new location information.

Important notes about migrating job tickets:

1. In previous versions of Submit, job tickets were language-dependent, that is, you had to use the same language in Submit as the language your job tickets were created in. With Submit Express, the job tickets you create are language-independent, so you can transfer job tickets among sites using other languages.
2. In order to open job ticket files that were created in Japanese or Chinese, you must have installed Submit Express on the Japanese or Chinese system; otherwise, some characters will not display correctly.
3. At migration, the values are imported from the old job ticket as they existed in the old .jtk file, even if those values violate some constraints among related fields, as listed below. The first time you access the newly migrated job ticket and you change any field from the set of related fields, associated values will be recalculated according to the existing constraints from the current version of Submit. Job ticket related fields are:
 - **Layout**
 - **Sides**
 - **Untrimmed page size**
 - **Finished page size**
 - **Front side** (vertical and horizontal)
 - **Back side** (vertical and horizontal)
4. Untrimmed page size values are not saved in the .jtk file in any previous version of Submit, so they will always be calculated depending on the paper and available dimensions defined on the server for the appropriate paper.

Notices

This information was developed for products and services offered in the U.S.A.

IBM® may not offer the products, services, or features discussed in this document in other countries. Consult your local IBM representative for information on the products and services currently available in your area. Any reference to an IBM

product, program, or service is not intended to state or imply that only that IBM product, program, or service may be used. Any functionally equivalent product, program, or service that does not infringe any IBM intellectual property rights may be used instead. However, it is the user's responsibility to evaluate and verify the operation of any non-IBM product, program, or service.

IBM may have patents or pending patent applications covering subject matter described in this document. The furnishing of this document does not give you any license to these patents. You can send license inquiries, in writing, to:

IBM Director of Licensing
IBM Corporation
North Castle Drive
Armonk, NY 10504-1785 U.S.A.

The following paragraph does not apply to the United Kingdom or any other country where such provisions are inconsistent with local law:

INTERNATIONAL BUSINESS MACHINES CORPORATION PROVIDES THIS PUBLICATION "AS IS" WITHOUT WARRANTY OF ANY KIND, EITHER EXPRESS OR IMPLIED, INCLUDING, BUT NOT LIMITED TO, THE IMPLIED WARRANTIES OF NON-INFRINGEMENT, MERCHANTABILITY OR FITNESS FOR A PARTICULAR PURPOSE. Some states do not allow disclaimer of express or implied warranties in certain transactions, therefore, this statement may not apply to you.

This information could include technical inaccuracies or typographical errors. Changes are periodically made to the information herein; these changes will be incorporated in new editions of the publication. IBM may make improvements and/or changes in the product(s) described in this publication at any time without notice.

Any references in this information to non-IBM Web sites are provided for convenience only and do not in any manner serve as an endorsement of those Web sites. The materials at those Web sites are not part of the materials for this IBM product and use of those Web sites is at your own risk.

IBM may use or distribute any of the information you supply in any way it believes appropriate without incurring any obligation to you.

For license inquiries regarding double-byte (DBCS) information, contact the IBM Intellectual Property Department in your country or send inquiries, in writing, to:

IBM World Trade Asia Corporation
Licensing
2-31 Roppongi 3-chome, Minato-ku
Tokyo 106, Japan

Licensees of this program who wish to have information about it for the purpose of enabling: (i) the exchange of information between independently created programs and other programs (including this one) and (ii) the mutual use of the information which has been exchanged, should contact:

IBM Corporation
Department 11PA Building 002S
PO Box 1900
Boulder CO 80301 USA

Such information may be available, subject to appropriate terms and conditions, including in some cases, payment of a fee. The licensed program described in this document and all licensed material available for it are provided by IBM under terms of the IBM Customer Agreement, IBM International Program License Agreement or any equivalent agreement between us.

Any performance data contained herein was determined in a controlled environment. Therefore, the results obtained in other operating environments may vary significantly. Some measurements may have been made on development-level systems and there is no guarantee that these measurements will be the same on generally available systems. Furthermore, some measurement may have been estimated through extrapolation. Actual results may vary. Users of this document should verify the applicable data for their specific environment.

Information concerning non-IBM products was obtained from the suppliers of those products, their published announcements or other publicly available sources. IBM has not tested those products and cannot confirm the accuracy of performance, compatibility or any other claims related to non-IBM products. Questions on the capabilities of non-IBM products should be addressed to the suppliers of those products.

All statements regarding IBM's future direction or intent are subject to change or withdrawal without notice, and represent goals and objectives only.

This information is for planning purposes only. The information herein is subject to change before the products described become available.

If you are viewing this information softcopy, the photographs and color illustrations may not appear.

For online versions of this book, we authorize you to:

- Copy, modify, and print the documentation contained on the media, for use within your enterprise, provided you reproduce the copyright notice, all warning statements, and other required statements on each copy or partial copy.
- Transfer the original unaltered copy of the documentation when you transfer the related IBM product (which may be either machines you own, or programs, if the program's license terms permit a transfer). You must, at the same time, destroy all other copies of the documentation.

You are responsible for payment of any taxes, including personal property taxes, resulting from this authorization.

Your failure to comply with the terms above terminates this authorization. Upon termination, you must destroy your machine readable documentation.

Trademarks

The following are trademarks or registered trademarks of International Business Machines Corporation:

Advanced Function Printing
AFP
AIX
AS/400
eNetwork

IBM
IBM Cross Platform Technologies for Windows
Infoprint
Intelligent Printer Data Stream
IPDS
Micro Channel
MVS
OS/2
OS/390
OS/400
Print Services Facility
S/390
System/370

The following are trademarks of other companies:

- Java and all Java-based trademarks and logos are trademarks or registered trademarks of Sun Microsystems, Inc. in the United States, other countries, or both.
- Microsoft, MS-DOS, Windows, Windows NT, Windows 2000, Windows ME, Microsoft Visual Basic, Microsoft Visual C++, and the Windows logo are trademarks of Microsoft Corporation in the United States, other countries, or both.
- Pentium is a registered trademark of Intel Corporation in the United States, other countries, or both.
- UNIX is a registered trademark of The Open Group in the United States and other countries.

Other company, product, and service names may be trademarks or service marks of others.