

## Chapter 1. Printing Oversize Characters on an IBM 6400 Printer with SAP R/3

With PTF U474309 (available in March, 2001), Infoprint Manager gives you the ability to resize Output Text Format (OTF) fonts on an IBM 6400 Printer. If your printer supports the graphics object content architecture (GOCA) feature, you can use the **6400fonts.tab** configuration file to alter the height and width of characters printed. The **SIZE=** parameter allows you to specify the height of a font (in points) and have it scaled appropriately. Since there are 72 points in an inch, **720** indicates a height of an inch. The **CPI=** (characters per inch) parameter defines the horizontal width to which the 6400 printer-resident fonts should be scaled. The smaller the number you specify, the wider the font you receive.

To ensure that a font prints one inch high, specify the following line in the **/usr/lpp/psf/sap2afp/6400fonts.tab** configuration file:

```
FONT=TIMES SIZE=720 TYPE=3 CODEPAGE=T1V10273 CharSet=C0S0ESTR DB=0
```

To ensure that a font prints one inch wide, specify the following line in the **/usr/lpp/psf/sap2afp/6400fonts.tab** configuration file:

```
FONT=TIMES SIZE=360 TYPE=3 CODEPAGE=T1V10273 CharSet=C0S0ESTR DB=0 CPI=1
```

To ensure that a font prints one—half inch wide, specify the following line in the **/usr/lpp/psf/sap2afp/6400fonts.tab** configuration file:

```
FONT=TIMES SIZE=360 TYPE=3 CODEPAGE=T1V10273 CharSet=C0S0ESTR DB=0 CPI=2
```

Once you have modified the **6400fonts.tab** file appropriately, access the **Print Screen List** window on the SAP R/2 graphical user interface and specify **6400** in the **Title** field of the **Spool request** pane:

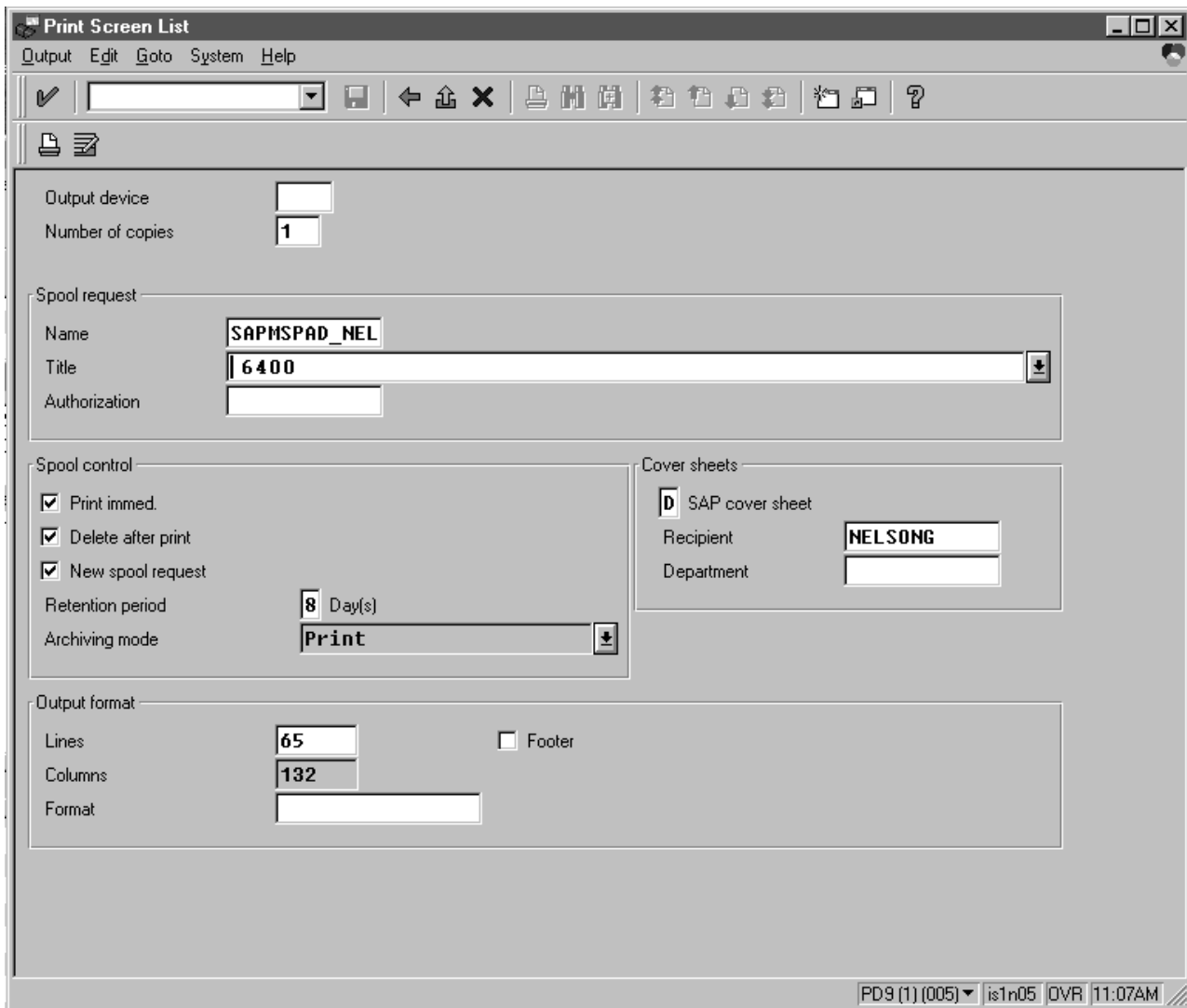


Figure 1. SAP R/3 Interface: Print Screen List window

## Chapter 2. Configuring the SAP R/3 Transform

The SAP Transform includes two types of files:

- An executable named **sap2afp**, which converts Output Text Format (OTF) data into MO:DCA-P output data and Advanced Business Application Programming (ABAP) list format data into line data. This file is installed in the **/usr/lpp/psf/bin** directory.
- Configuration files that are installed in the **/usr/lpp/psf/sap2afp** directory.

Table 1.

Configuration File	Purpose	Use
<b>barcode.tab</b>	Provides list of valid SAP bar codes.	OTF data only
<b>xxxxyyyy.tab</b>	Maps ASCII code pages to EBCDIC code pages.	OTF data only
<b>fonts.tab</b>	Provides a list of raster fonts with the appropriate character set and code page.	OTF data only
<b>6400fonts.tab</b>	Provides a list of raster fonts that apply exclusively to the IBM 6400 printer, with the appropriate character set and code page.	OTF data only
<b>image.tab</b>	Defines the dither matrix for half-tone color print jobs.	OTF data only
<b>pagedef.tab</b>	Defines the form definition (SAP R/3PAPER TYPE) used, as well as the page definition and fonts for jobs that go through ACIF.	ABAP/OTF
<b>defcp.tab</b>	Converts ASCII into EBCDIC characters.	ABAP data only