



**Infoprint Manager Submit for Mac OS X
Version 10.1
README**

Contents

Infoprint Manager Submit for Mac OS X Version 10.1

README	1
Introduction to the Print-on-Demand Feature client software	1
Macintosh Requirements	2
Installing Infoprint Submit.	2

Starting Infoprint Submit	2
Migrating job tickets from previous versions of Infoprint Submit	4
Known product limitations	4
Notices	4
Trademarks.	6

README Infoprint Manager Submit for Mac OS X Version 10.1

This file contains information that you need to install Infoprint Submit, plus additional information not included in the product documentation.

Note: IBM will update the web version of this document regularly. For the latest information on this Infoprint client, access the IBM Printing Systems website at <http://www.ibm.com/printers>. Under **Resources For** click **Infoprint Manager**. Under **Products** in the right hand navigation bar, click **Infoprint Manager for AIX** or **Infoprint Manager for Windows**. Under **Product Resources** click **Product Library**

This README file contains the following sections:

- “Introduction to the Print-on-Demand Feature client software”
- “Macintosh Requirements” on page 2
- “Installing Infoprint Submit” on page 2
- “Starting Infoprint Submit” on page 2
- “Migrating job tickets from previous versions of Infoprint Submit” on page 4
- “Known product limitations” on page 4

Refer to the *Print-on-Demand Feature: Submit for Macintosh User's Guide* for instructions on configuration tasks that are necessary to take advantage of all the features of Infoprint Submit.

Introduction to the Print-on-Demand Feature client software

The Infoprint Manager for AIX Print-on-Demand Feature consists of the following three clients:

- IBM® Infoprint® Submit Express for the Windows® Operating System
- IBM Infoprint Submit for the Windows Operating System
- IBM Infoprint Submit for the Macintosh Operating System

The Infoprint Submit Express for the Windows Operating System client is replacing the Infoprint Submit client; however, this product continues to be included with Infoprint Manager for AIX and is supported. You may continue using it if you are a current user. For instructions on using Infoprint Submit for Windows, refer to the *Infoprint Manager for AIX Print-on-Demand Feature: Submit for Windows Users' Guide*.

The Infoprint Submit Express for the Windows Operating System client is updated and contains several enhancements to usability, serviceability, and reliability from the previous Windows version. If you are a new user of the Print-on-Demand Feature, we recommend that you use the new Submit Express client.

The Infoprint Submit for the Macintosh Operating System client is still available. For instructions on using Infoprint Submit for Macintosh, refer to the *Infoprint Manager for AIX Print-on-Demand Feature: Submit for Macintosh User's Guide*.

Macintosh Requirements

Infoprint Submit has these minimum requirements:

- PowerMac
- Macintosh running OS X version 10.1 or later
- 32 MB RAM
- 5 MB hard drive space
- Local area network (LAN) connection (Ethernet)
- Network connectivity with a user ID having permission to submit print jobs and perform queries

Installing Infoprint Submit

This section contains information that you need to install Infoprint Submit.

1. Insert the Infoprint Manager Print-on-Demand Feature CD-ROM (2 of 2) into the drive and double-click its icon on the desktop.
2. Specify the directory where you want the install program to be unpacked.
3. Double-click the install file icon for your language to uncompress the install program, for example, **SubmitInstaller_en_US.hqx**.
4. Double-click the install program icon (for example, **SubmitInstaller_en_US**) to start installing the program.
5. Specify the directory where you want the program to be installed.
6. Follow the instructions as directed from the installer.

It is recommended that you install Submit in the Applications directory of the Hard Drive. Once the product is installed, you can create an alias on the desktop to provide easy access to Submit. To do this, highlight the Infoprint Submit file, then choose **Make alias** from the **File** menu, and drag the alias onto the desktop.

Starting Infoprint Submit

After installing Infoprint Submit and associated software, you can access the programs by clicking on the **Infoprint Submit** icon.

1. Go to the **Options** menu, and select **Settings**. The **Settings** dialog displays.
2. Select the **Connections** tab.

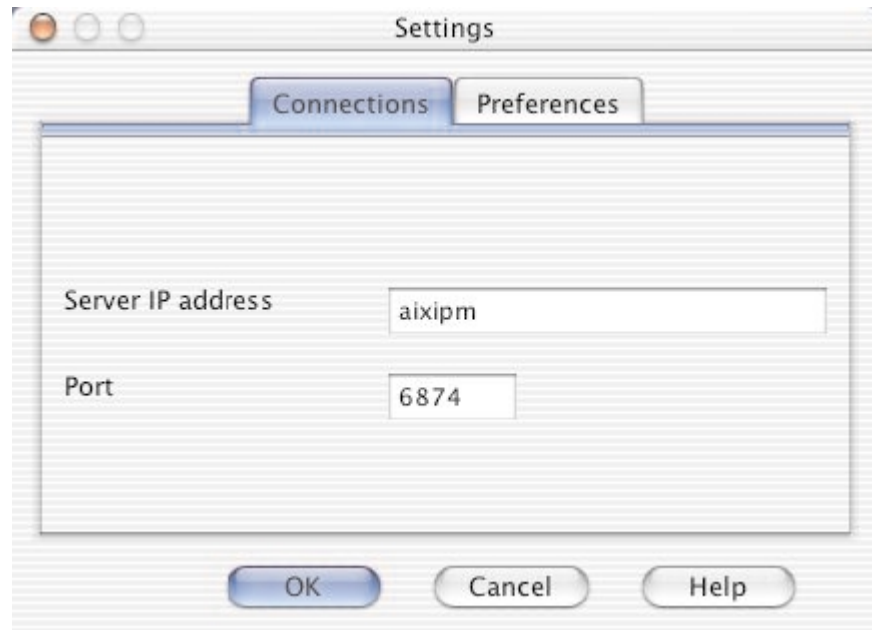


Figure 1. The Settings Dialog Connections Tab.

3. Enter the IP address for your Infoprint Manager Server.
4. Let the port number default.
5. Select the **Preferences** tab.

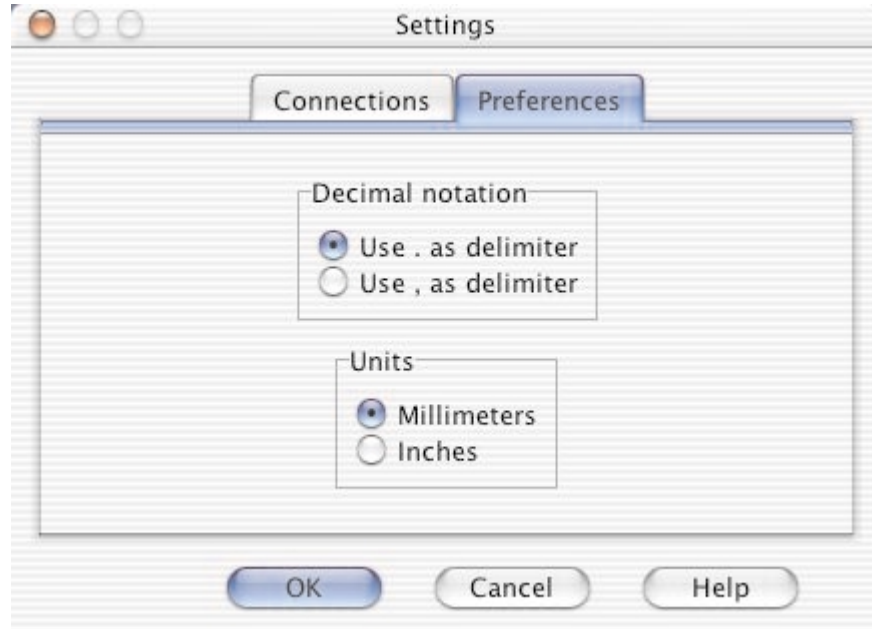


Figure 2. The Settings Dialog Preferences Tab.

6. Select your preferences for **Decimal notation** and **Units** of measure.
7. Click **OK** to return to the main Infoprint Submit screen.

Migrating job tickets from previous versions of Infoprint Submit

To migrate job tickets from a previous version of Submit to your current version of Submit on Mac OS Version 10.1, do the following:

1. From the previous version of Submit, open the job ticket you want to migrate.
2. Submit the job:
 - Open the Ticket menu and select Submit Job to submit the job.
 - Select the Schedule tab from the Submit dialog.
 - Select Hold from the RIP options group box.
 - Click OK to submit the job.
3. Select **Options** → **Job Status** to open the Job Status dialog.
4. Do the following to copy the contents of the job ticket file to a text file:
 - Select the ticket you want to migrate.
 - Click the **View Ticket** button to open the Job Ticket window.
 - Highlight the entire contents of the job ticket file.
 - Copy the contents of the job ticket file to the clipboard (press Command+C).
 - Open a new file in a text editor.
 - Paste the job ticket file contents into this new file (press Command+V).
 - Save the file. (Be sure this file has an extension of .jtk.)
5. Transfer all source files listed in your job ticket file, and the converted job ticket file, to the system that has the current version of Submit. Save them in the directory where the Infoprint Submit files have been saved or where they can be easily located.
6. In your current version of Submit, select **Ticket** → **Open** to open the migrated job ticket file. An error may occur the first time you assign a source file to the migrated job ticket if the path to the file has changed. Use the Browse function to locate the file, and Submit will save the new location information.

Known product limitations

Restrictions in the Mac operating system or Java implementation tools have caused the following known product limitations in this version of Infoprint Submit:

- When using **File** → **Save As**, or if the user is saving a job ticket for the first time, the **Name** field is not displayed as the default file name for saving the ticket.
- After recovering from a System Standby, the spin buttons (up/down arrow buttons) on entry fields cannot be used with the mouse. You can type a value into the entry fields, or use the arrow keys on the keyboard to change the displayed values.
- When migrating job tickets for which duplex printing and a separate back side adjustment are selected, page placement values for the back side of the paper are not saved in the migrated job ticket. Settings for the back side must be adjusted manually.
- Some keyboard usage methods do not conform to standard system controls. Refer to the online Help for Infoprint Submit for instructions on using the keyboard.

Notices

This information was developed for products and services offered in the U.S.A.

IBM may not offer the products, services, or features discussed in this document in other countries. Consult your local IBM representative for information on the products and services currently available in your area. Any reference to an IBM product, program, or service is not intended to state or imply that only that IBM product, program, or service may be used. Any functionally equivalent product, program, or service that does not infringe any IBM intellectual property rights may be used instead. However, it is the user's responsibility to evaluate and verify the operation of any non-IBM product, program, or service.

IBM may have patents or pending patent applications covering subject matter described in this document. The furnishing of this document does not give you any license to these patents. You can send license inquiries, in writing, to:

IBM Director of Licensing
IBM Corporation
North Castle Drive
Armonk, NY 10504-1785 U.S.A.

The following paragraph does not apply to the United Kingdom or any other country where such provisions are inconsistent with local law:

INTERNATIONAL BUSINESS MACHINES CORPORATION PROVIDES THIS PUBLICATION "AS IS" WITHOUT WARRANTY OF ANY KIND, EITHER EXPRESS OR IMPLIED, INCLUDING, BUT NOT LIMITED TO, THE IMPLIED WARRANTIES OF NON-INFRINGEMENT, MERCHANTABILITY OR FITNESS FOR A PARTICULAR PURPOSE. Some states do not allow disclaimer of express or implied warranties in certain transactions, therefore, this statement may not apply to you.

This information could include technical inaccuracies or typographical errors. Changes are periodically made to the information herein; these changes will be incorporated in new editions of the publication. IBM may make improvements and/or changes in the product(s) described in this publication at any time without notice.

Any references in this information to non-IBM Web sites are provided for convenience only and do not in any manner serve as an endorsement of those Web sites. The materials at those Web sites are not part of the materials for this IBM product and use of those Web sites is at your own risk.

IBM may use or distribute any of the information you supply in any way it believes appropriate without incurring any obligation to you.

For license inquiries regarding double-byte (DBCS) information, contact the IBM Intellectual Property Department in your country or send inquiries, in writing, to:

IBM World Trade Asia Corporation
Licensing
2-31 Roppongi 3-chome, Minato-ku
Tokyo 106, Japan

Licensees of this program who wish to have information about it for the purpose of enabling: (i) the exchange of information between independently created programs and other programs (including this one) and (ii) the mutual use of the information which has been exchanged, should contact:

IBM Corporation
Department 11PA Building 002S

PO Box 1900
Boulder CO 80301 USA

Such information may be available, subject to appropriate terms and conditions, including in some cases, payment of a fee. The licensed program described in this document and all licensed material available for it are provided by IBM under terms of the IBM Customer Agreement, IBM International Program License Agreement or any equivalent agreement between us.

Any performance data contained herein was determined in a controlled environment. Therefore, the results obtained in other operating environments may vary significantly. Some measurements may have been made on development-level systems and there is no guarantee that these measurements will be the same on generally available systems. Furthermore, some measurement may have been estimated through extrapolation. Actual results may vary. Users of this document should verify the applicable data for their specific environment.

Information concerning non-IBM products was obtained from the suppliers of those products, their published announcements or other publicly available sources. IBM has not tested those products and cannot confirm the accuracy of performance, compatibility or any other claims related to non-IBM products. Questions on the capabilities of non-IBM products should be addressed to the suppliers of those products.

All statements regarding IBM's future direction or intent are subject to change or withdrawal without notice, and represent goals and objectives only.

This information is for planning purposes only. The information herein is subject to change before the products described become available.

If you are viewing this information softcopy, the photographs and color illustrations may not appear.

For online versions of this book, we authorize you to:

- Copy, modify, and print the documentation contained on the media, for use within your enterprise, provided you reproduce the copyright notice, all warning statements, and other required statements on each copy or partial copy.
- Transfer the original unaltered copy of the documentation when you transfer the related IBM product (which may be either machines you own, or programs, if the program's license terms permit a transfer). You must, at the same time, destroy all other copies of the documentation.

You are responsible for payment of any taxes, including personal property taxes, resulting from this authorization.

Your failure to comply with the terms above terminates this authorization. Upon termination, you must destroy your machine readable documentation.

Trademarks

The following are trademarks or registered trademarks of International Business Machines Corporation:

Advanced Function Printing
AFP
AIX

AS/400
eNetwork
IBM
IBM Cross Platform Technologies for Windows
Infoprint
Intelligent Printer Data Stream
IPDS
Micro Channel
MVS
OS/2
OS/390
OS/400
Print Services Facility
S/390
System/370

The following are trademarks of other companies:

- Java and all Java-based trademarks and logos are trademarks or registered trademarks of Sun Microsystems, Inc. in the United States, other countries, or both.
- Microsoft, MS-DOS, Windows, Windows NT, Windows 2000, Windows ME, Microsoft Visual Basic, Microsoft Visual C++, and the Windows logo are trademarks of Microsoft Corporation in the United States, other countries, or both.
- Pentium is a registered trademark of Intel Corporation in the United States, other countries, or both.
- UNIX is a registered trademark of The Open Group in the United States and other countries.

Other company, product, and service names may be trademarks or service marks of others.