

IBM InfoPrint Manager 3.1 for AIX



Installing Both Infoprint Fax and Email Options (4/22/99)

Installing Infoprint Fax and Email Options

Infoprint Manager Fax Support	1
Verifying Fax Prerequisites	1
Configuring Fax Options	2
Basic Fax Configuration Options	3
Creating a Fax and Email Destination on the Server	5
Using the Basic Server Interface	6
Using the Advanced Server Interface	9
Verifying the Fax Configuration	14
Advanced Fax Configuration Options	16
Enhancing Interstar Lightning Fax Server Performance	16
Pooling Fax Destinations	17
Scaling the Width and Height of Fax Output	17
Activating the Infoprint Tracing Facilities	18
Customizing Fax Cover Sheets	18

Infoprint Manager Fax Support

The following describes how you can verify prerequisites, configure, and verify your configuration for using the Infoprint Fax feature.

Verifying Fax Prerequisites

By default, IBM Infoprint Manager 3.1.0 provides a single phone line for sending and receiving faxes. Before you can configure and run the Infoprint Manager Fax option, you must ensure that you have purchased and installed either the GammaLink ISA Fax Board CPI/100, or the Interstar Lightning Fax Server version of this Board (such may be referred to as 'Card' in subsequent documentation). For more information on how to obtain this Fax board, see either the Dialogic Product Line Homepage at <http://www.gammalink.com> or the Interstar Lightning Fax Home Page at <http://www.faxserver.com>.

1. Install the Fax card by putting it in any available ISA slot on the back of your Infoprint AIX server.

Once you have added the prerequisite software specified below and completed the configuration procedures that follow, you can verify that the card is active.

2. After installing the GammaLink Fax Board, run the Infoprint Installer, as described in the *Installing Infoprint Manager Control on Your AIX System(4/8/99)* Portable Document Format (PDF) file (either page 25 or page 32).

Specify either the Infoprint Fax (single line) or the Infoprint Fax (multiple lines) option and this utility will install the the following software applications:

- Infoprint Control
- **tiff2afp** data stream transform
- Adobe PostScript (**ps2afp**) data stream transform
- Virtual Printer software
- Interstar Lightning Fax Server Software Version 5.0
- Interstar Lightning Fax Server version of the GammaLink ISA Fax Board (CPI/100) or the GammaLink ISA Fax Board
- Lotus Notes Server

Note: If you select the Infoprint Fax (multiple lines) option, you must contact your AIX support line to obtain the key numbers and the correct license:

1. From an AIX window, specify `uname -a` to obtain the planner ID of your system.
2. Send that planner ID number to your IBM service representative.
3. Your service representative will send you two files -- **LFlic.txt** and **LFserver** - which you must put on your Infoprint AIX server in the **/usr/lpp/lightningfax/lfaixserver** directory.

These files replace files with the same name that reside on your system. If you do not obtain these files and overwrite the existing files on your server, you will be unable to use more than a single channel.

1. Once you have run the Infoprint Installer, reboot your AIX Infoprint server.
2. Allow for 60 MB of space in the **/var/psf/** directory. The **/var/psf/faxserver** file system will receive all fax input and provide a workspace for creating all fax and email output.
3. Allow for 60 MB of space in the **/usr/lpp/lightningfax** directory to ensure that the fax software has adequate work space.

Configuring Fax Options

This topic describes how to make important changes to the files that the Infoprint Installer puts on your system so that the AIX server hardware and software can run with Infoprint Manager. These configuration changes consist of :

- [Basic Fax Configuration Options](#) that you must complete to either send or receive Faxes
- [Advanced Fax Configuration Options](#) that you can use to customize the faxes you send and receive.

Note: To make these changes, you must log into the IBM Infoprint AIX system as **root**.

Basic Fax Configuration Options

The following configuration tasks are required before you can either send or receive faxes with Infoprint Manager.

1. From the **/etc** directory, verify that the **/etc/inittab** file contains the following four lines towards the bottom of the file:

```
lfaixserver:2:once:/etc/rc.lfaixserver
```

```
lfaixdriver:2:once:/etc/rc.lfaixdriver
```

```
lfaixapi:2:once:/etc/rc.lfaixapi
```

```
lfapifbk:2:once:/etc/rc.lfapifbk
```

Note: If these lines do not exist, edit the file and add them, because they ensure that the Fax server starts automatically when you reboot the Infoprint AIX server. If you edit the file, be sure to save it and exit the editor.

2. From the **/etc** directory, verify that the **rc.lfapifbk** file has been created and contains the following line:

```
/usr/lpp/lightningfax/lfapifbk/LFapifbk /dev/null 2&1 &
```

Note: The Infoprint Installer should create this file for you. If it has not, you must create the file with the information described on this page. If you edit the file, be sure to save it and exit the editor.

3. Verify that the file permissions allow you to execute it. If they do not, change the permissions on this file to make it executable by specifying:

```
chmod 755 /etc/rc.lfapifbk
```

4. To configure the Lightning Fax Server Software files that control the GammaLink Fax card, log into the IBM Infoprint AIX system as **root**, make the following changes from the **/etc** file system:

Fully-Qualified File Name/	Value
Changed Parameter	
/etc/lfaixdriver.conf	
<i>NumChan</i> =	Specify a numeric value to match the number of lines on your physical fax card (usually either 1 or 4).

Fully-Qualified File Name/	Value
<p data-bbox="586 268 748 323" style="text-align: center;">Changed Parameter</p> <p data-bbox="204 352 537 382">/etc/lfaixdriver.conf</p> <p data-bbox="298 411 704 569"><i>ChannelX_ServerIP=</i> where X indicates the channel number. For example, Channel 2 could specify <i>Channel2_ServerIP=9.99.98.3</i></p>	<p data-bbox="776 352 1373 415">Specify the Internet Protocol (IP) address of your Infoprint AIX server.</p> <p data-bbox="776 445 1344 508">Be sure to change this parameter for each channel that you specify in the file.</p> <p data-bbox="870 537 1338 625">You can obtain this value by specifying the following command: <i>ping -c3 servername</i></p>
/etc/lfaixserver.conf	<p data-bbox="776 655 1373 718">Specify the Internet Protocol (IP) address of your Infoprint AIX server.</p> <p data-bbox="776 747 1344 810">Be sure to change this parameter for each channel that you specify in the file.</p>
/etc/lfaixapi.conf	<p data-bbox="776 894 1373 957">Specify the Internet Protocol (IP) address of your Infoprint AIX server.</p> <p data-bbox="776 987 1344 1050">Be sure to change this parameter for each channel that you specify in the file.</p>
/etc/lfaixapifbk.conf	<p data-bbox="776 1134 1373 1197">Specify the Internet Protocol (IP) address of your Infoprint AIX server.</p> <p data-bbox="776 1226 1344 1289">Be sure to change this parameter for each channel that you specify in the file.</p>

Note: You can define up to 96 channels for both sending and receiving fax transmissions.

- To ensure that you can submit fax output through Infoprint Manager, you must [create a Fax destination on your Infoprint AIX server](#).

6. For receiving fax input, use the System Management Interface Tool (SMIT) to map channel numbers to particular phone numbers and print queues in the **/usr/lpp/psf/fax/procfax.cfg** file to map channel numbers to particular phone numbers and print queues.

1. From the AIX command line, specify either `smit` or `smitty` and take the following path: **Infoprint Printing System Miscellaneous Configuration Configure the Fax Input Attribute File**.
2. From the **Fax channel selector** panel, enter the number (ranging from 1 to 17) for the channel that you are configuring

Note that you can configure all, some, or none of your channels for Fax Input, depending upon the design of your system.

3. From the **Configure the Fax Input Attribute File** window, fill in both the **Incoming Fax Line Phone Number** and the **Logical Destination** fields.

Note that while you can specify any phone number, you must use the f4 key to select from a list of logical destinations. These logical destinations must already exist on the Infoprint AIX server, having been created as Fax destinations on the Infoprint AIX server.

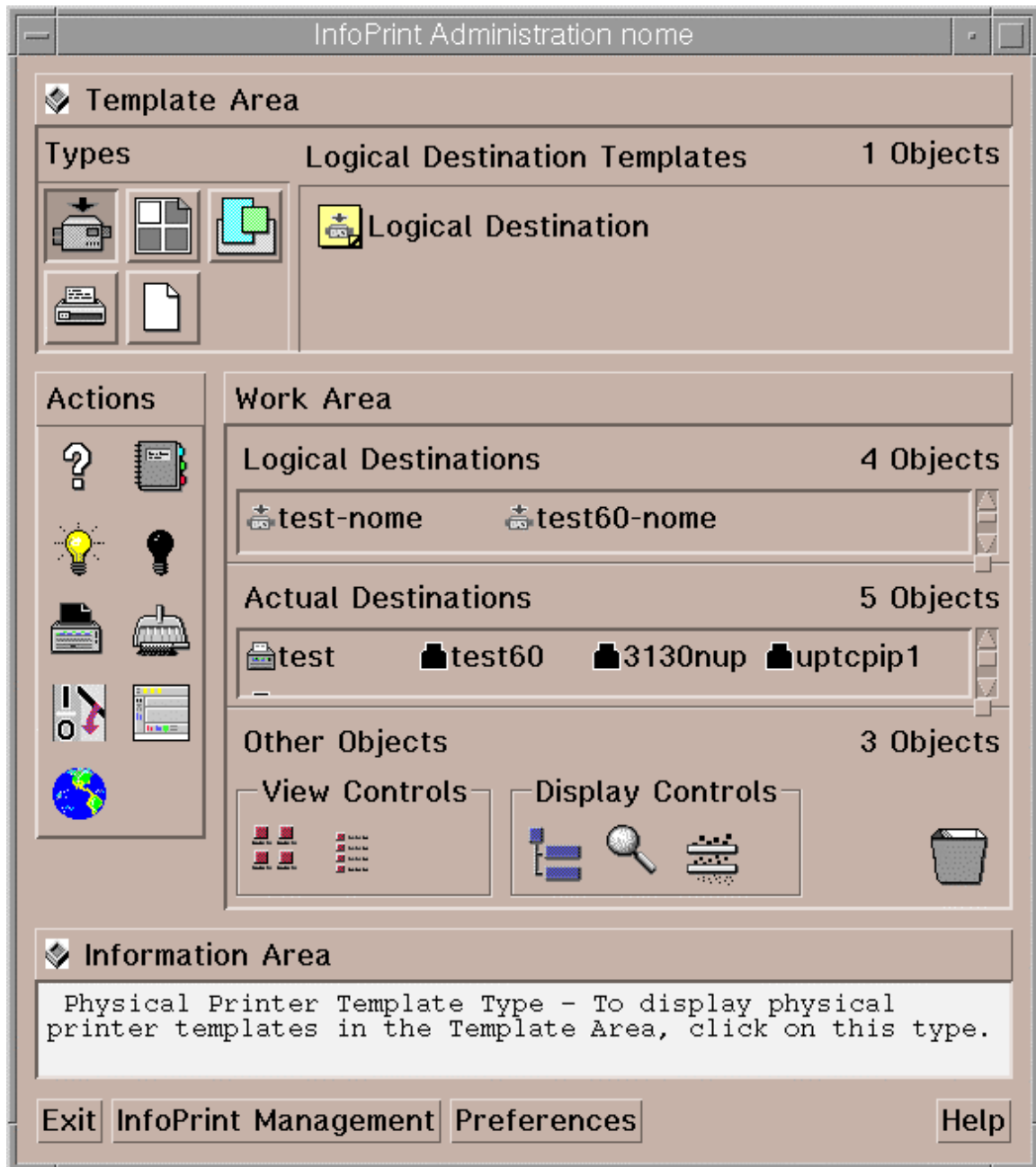
Creating a Fax and Email Destination on the Server

This topic describes how to create both an actual and a logical destination for fax and e-mail data. This task must be performed on the Infoprint AIX server before you can begin sending and receiving either fax or e-mail. While the examples provided on this page reflect a fax destination, the same path is followed to create a destination for Email.

Please note that you can use either the [Basic](#) or the [Advanced](#) Server graphical user interface (GUI) to perform this task. If you use the Advanced GUI, you must perform additional steps to define both a print queue and an actual destination for the fax jobs.

Using the Basic Server Interface

1. From the **Infoprint Administration** window, go to the **Template Area** and select the **Actual Destination Template** icon. This icon is in the first column of the second row (The **Information Area** field may list this as a Physical Printer Template Type). This step opens the **Actual Destination Templates** pane.



2. From the **Infoprint Administration** window, go to the bottom of the window and click on the **Preferences** button.

This step opens the **User Preferences** pop-up window.

3. From the **User Preferences** pop-up window, click on the **List** button to the right of the **Display actual destination templates** field.

This step opens the **Template selection** pop-up menu.

4. From the **Template selection** pop-up menu, click on the Fax and Email names.

This step puts the **Fax** and **Email** templates inside the **Actual Destination Templates** pane.

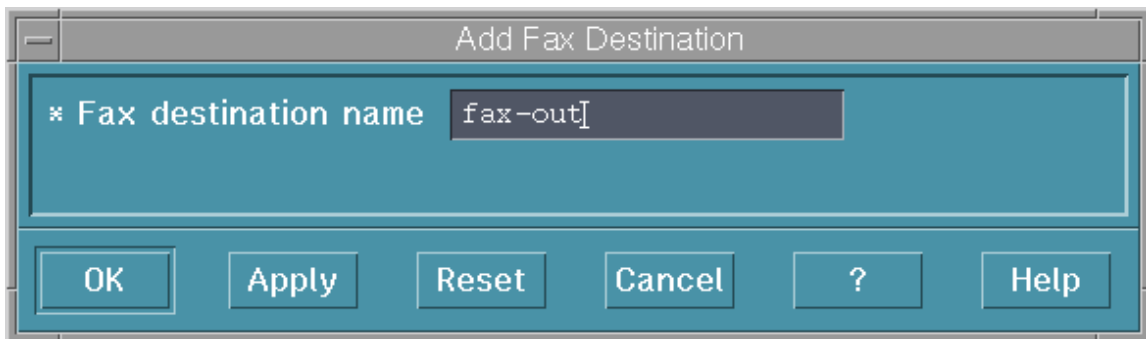
5. From the **Actual Destination Templates** pane, select the appropriate icon (either **Fax** or **Email**), and use the middle button of your mouse to drag it into the **Actual Destinations** pane.



6. From the **Select a Target Object** pop-up window, select the name of the AIX server where you want this destination to reside.

Note that this window appears only when you have more than one server.

7. From the **Add xxx Destination** pop-up window, where **xxx** is either **Fax** or **Email**, depending upon your selection, choose a name for your destination. This name should be no more than eight characters long.



Once you choose a name for the destination (such as **fax-out**, an icon with that name appears in the **Actual Destinations** area. In addition Infoprint Manager creates a logical destination in the Logical Destinations pane with a similar name (such as **fax-out-server**, where **server** is the name of your AIX Infoprint server).

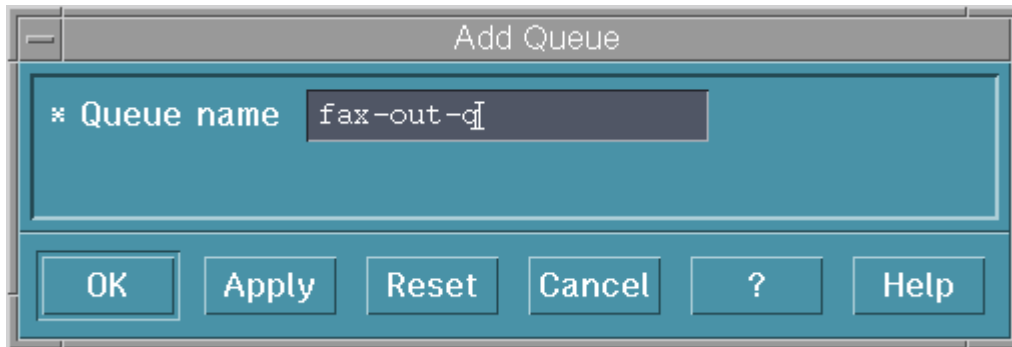
Note: You cannot create more than one fax destination for each server. If you attempt to do so, the system responds with a message and does not allow you to proceed.

8. To enable this destination, drag the **Enable** icon from the Actions area and drop it on the Fax or Email actual destination that you just created.
9. To enable the logical destination, drag the **Enable** icon from the Actions area and drop it on either the Fax or Email destination that you just created.

Once you have completed this procedure, return to the [Configuring Fax Options](#) step 6 on page 6 and use the SMIT option to map channel number to phone numbers. If you have defined these destinations for configuring email, go to page to complete those tasks.

Using the Advanced Server Interface

1. From the **Servers** window, click on the **Queue Template Type** button that resides in the Types area.
2. Drag the system-defined **Queue Template** icon from the Queue Templates pane onto the **server** icon that resides in the Servers pane of the Work Area.
3. From the Add Queue pop-up window, specify a queue name in the **Queue name** field, such as **fax-out-q**. This step creates the print queue that connects the Logical Destination to the Actual Destination.

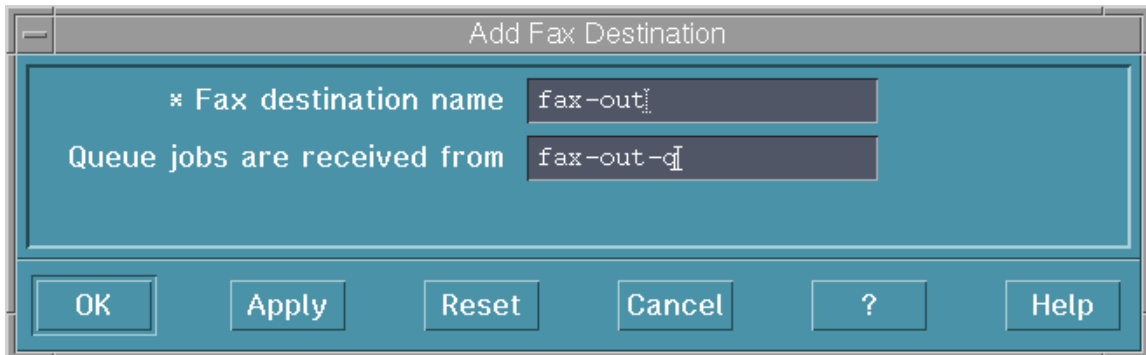


4. From the **Servers** window, click on the **Actual Destination Template Type** button that resides in the Types area.
5. From the **Servers** window, go to the bottom of the window and click on the **Preferences** button. This step opens the **User Preferences** window.
6. From the **User Preferences** window, click on the **List** button to the right of the **Display actual destination templates** field. This step opens the **Template selection** pop-up menu.

- From the **Template selection** pop-up menu, click on the Fax or Email names. This step puts the **Fax** and **Email** templates (displayed below) inside the **Actual Destination Templates** pane.



- Drag the system-defined **Fax Template** icon (or the **Email Template** icon) from the Actual Destination Templates pane onto the **server** icon that resides in the Servers area of the Work Area.
- From the Add a Fax Destination pop-up window, specify an actual destination name in the **Fax destination name** field, such as **fax-out**, and use the queue you just created (**fax-out-q**) for the **Queue jobs are received from** field. This step creates the logical destination that will use the print queue to submit jobs to the Actual Destination which is created in the next series of steps.

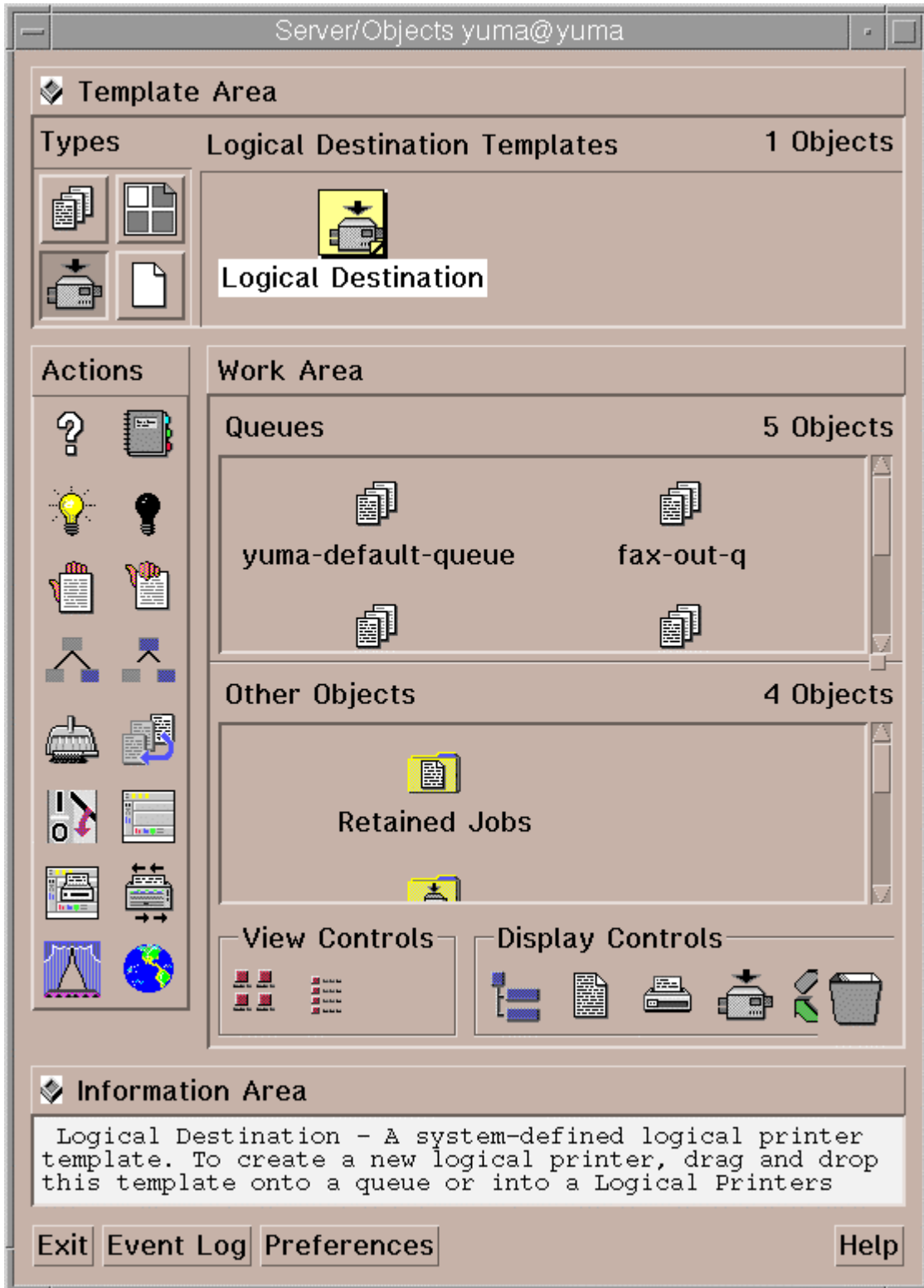


Note: You cannot create more than one fax destination at a time. If you attempt to do so, the system responds with a message and does not allow you to proceed.

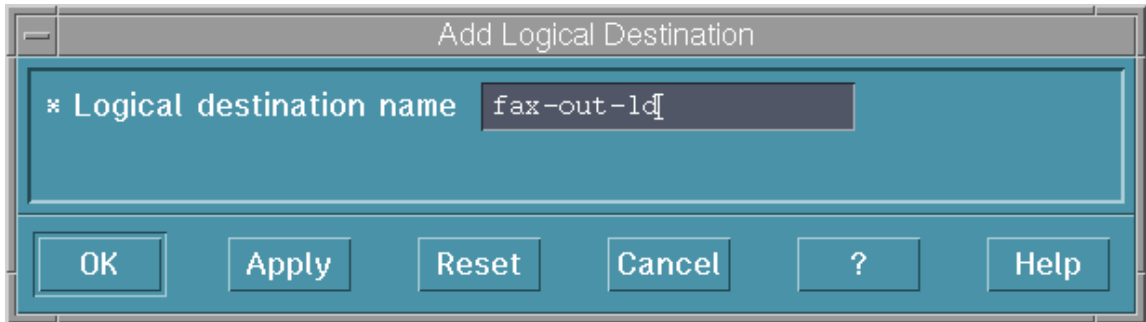
10. From the **Servers** window, highlight the server icon from the **Work Area** pane and click on the **Open Window** icon from the Actions area. This step opens the **Server/Objects** window, where you can create the Logical Destination for Fax.

11. From the **Server/Objects** window, drag down the sash on the right side of the **Work Area** pane (a small raised square) to open the Queues area.

12. From the **Server/Objects** window, drag the system-defined **Logical Destination** icon onto the **fax-out-q** icon that resides in the **Queues** pane (as displayed on the following page).



13. From the **Add Logical Destination** pop-up window, specify a logical destination name in the **Logical destination name** field, such as **fax-out-ld**.



14. To verify that the logical destination is attached to the print queue, double-click on the **fax-out-q** icon to show the logical destination and the actual destination for the **fax-out-q** queue.
15. To enable this destination, drag the **Enable** icon from the Actions area and drop it on the Fax or Email actual destination that you just created.
16. To enable the logical destination drag the **Enable** icon from the Actions area and drop it on the Fax or Email actual destination that you just created.

Once you have completed this procedure, return to the [Configuring Fax Options](#) step 6 on page 6 and use the SMIT option to map channel number to phone numbers. If you have defined these destinations for configuring email, go to page to complete those tasks.

Verifying the Fax Configuration

This topic describes how to verify the AIX directories that you have just created for Infoprint Fax Manager.

1. Ensure that your Infoprint AIX server has the **/usr/lpp/psf/fax**, the **/usr/lpp/psf/bin**, and the **/usr/lpp/lightningfax/lfaixserver** directories.

The **/usr/lpp/psf/fax** directory must contain the following:

- **infofax.cfg**
- **procfax.cfg**
- **Channel00X.att** (where X represents the particular channel number. Note that each channel will have a separate file.)
- **fax.id**
- **email.id**

The **/usr/lpp/psf/bin** directory must contain the following:

- **procfxmsg**
- **procfax**
- **img2fax**
- **sendmemo**

The **/usr/lpp/lightningfax/lfaixserver** directory must contain the following:

- **LFlic.txt**
- **LFserver**

Once you have verified these directories, you must reboot both the Infoprint AIX server and the AIX operating system:

1. From an AIX window, specify

```
pdshutdown-w now servername
```

where *servername* is the name of the Infoprint AIX server.

2. Specify Shutdown -Fr

to shut down and subsequently restart the AIX operating system.

1. Ensure that GammaLink Fax Board links to the channels by checking how the fax lines have been plugged into the Board on the Infoprint AIX server.

For a four-line fax card, the back of the board has two sockets that should contain dual analog lines. If the text on the Board is on the left side and the writing moves from bottom to top, the first analog connection should be Channel 1, and the second analog connection should be Channel 2. Channels 3 and 4 should be on the socket furthest from the text, with the Channel 4 line on the outside.

2. Verify that the LightningFax software is working correctly with the fax card by dialing each fax phone number from an analog phone.

If working correctly, the fax card should make a connection after the second ring and produce the static sound that is peculiar to fax machines.

Once you restart both the AIX operating system and the Infoprint AIX server, you can go to [Sending and Receiving Fax Jobs at ftp://ftp.software.ibm.com/printers/specs/mproc45.pdf](ftp://ftp.software.ibm.com/printers/specs/mproc45.pdf).

Advanced Fax Configuration Options

By editing the following configuration files, you can perform advanced configuration tasks for sending and receiving through the Infoprint Fax option. Note that a pound sign (#) should precede each comment in the AIX file.

Enhancing Interstar Lightning Fax Server Performance

The following changes can ensure that your Fax software runs smoothly and efficiently.

From a command line on your Infoprint AIX server, type:

- `cd /usr/lpp/lightningfax/lfaixjavaclient.`

1. Type `./start_java_client.`

Note that you cannot specify any spaces or the command may not run. Because this executable is a Java applet, it may take a few minutes to open.

2. From the **Lightning FAX -Administrator on *Servername*** window, where *Servername* is the name of your Infoprint AIX server, click on the **Resource1** icon at the top of the left panel.
3. Right click on the **LFapi** icon and select the **edit user** option from the pop-up menu.
4. From the **Editing LFapi** window, open the **User Settings** tab and ensure that all the options under **Deleting Options** and **Notifying Options** have been checkmarked.

These options ensure that the Infoprint AIX server does not run out of space by retaining unnecessary data. Also, it ensures that any notification profiles that you set in fax attribute files are passed from the Lightning Fax card to the Infoprint AIX server.

Because the other options are set when you install the Fax option on the server, IBM recommends that you do not make changes to other sections.

5. Once you have made these changes, save them and exit the interface. You do not need to reboot either the server or the AIX operating system for these changes to take effect.

Pooling Fax Destinations

If you want all faxes to come from the same logical destination, edit the **/usr/lpp/psf/fax/procfax.cfg** file and ensure that all logical destination parameters point to the same logical destination:

```
logical_destination_1 = fax1-ld
```

```
logical_destination_2 = fax1-ld
```

Note: Ensure that the logical destination you specify (in this case, `fax1-ld`) is correctly defined on your Infoprint AIX server and connected to a queue and actual destination as described in [Creating Fax destinations on the Infoprint AIX server](#).

Scaling the Width and Height of Fax Output

You can scale a fax document to any size that you want, modify the following two values on the **infifax.cfg** file:

fax_height_scale=1.5

Specifies the number of inches in height that a fax document should be scaled back. For example, if you take the 1.5 inch default value and submit the fax to a page 11 inches long, the output will be scaled to 9.5 inches.

fax_width_scale=0.5

Specifies the number of inches in width that a fax document should be scaled back. For example, if you take the 0.5 inch default value and submit the fax to a page 8.5 inches wide, the output will be scaled to 8.0 inches.

Activating the Infoprint Tracing Facilities

You can activate the Infoprint Fax tracing facilities by editing both the **/usr/lpp/psf/fax/infifax.cfg** file and the **/usr/lpp/psf/fax/procfax.cfg** file and changing the `trace_log` parameter values to 'yes'. To further modify these trace logs, use the following options:

fax_log_file = /var/psf/fax/infifax.log

Specifies the default log file for fax output information.

fax_log_file = /var/psf/fax/procfax.log

Specifies the default log file for fax input information.

trunc_fax_log = Yes | No

Specifies whether or not you want to truncate either logging file after it reaches a size of 200K bytes.

trace_log = Yes | No

Specifies whether or not you want the InfoFax Tracing facility activated or not.

Customizing Fax Cover Sheets

You can customize Fax cover sheets by editing the **Channel00X.att** file (where **X** indicates the channel number) in the **/usr/lpp/psf/fax** directory. This file serves as the **pdpr** print command and **tiff2afp** data stream transform command configuration file. By configuring a separate attribute file for each channel, you can define sets of attributes for different printers that reside in different departments of your business enterprise.

Use the examples provided below to configure your Infoprint Fax Manager. Note that a pound sign (#) should precede each comment in the AIX file.

A Basic Example

```
other-transform-options = "-r600 -alg alg1 -fit scale"
```

An Expanded Example

From this example, you can specify a specific department and location that will automatically appear on a fax that uses this channel:

```
other-transform-options = "-r600 -alg alg1 -fit scale"
```

```
department-text = "Accounting"
```

```
building-text = "Building 002-C5-10"
```

```
address1-text = "NewCompany Press"
```

```
address2-text = "1234 Primrose Street"
```

```
address3-text = "Box 1234, DeptR66"
```

For the complete set of document attributes, specify the following command from an AIX window:

```
man pd_att_document
```

For the complete set of job attributes, specify the following command from an AIX window:

```
man pd_att_job
```

Note that these attributes are also listed under the **pdpr** print command attributes that are provided in the *Infoprint Manager Reference Guide*.

Configuring Infoprint Manager Email

Once Email has been installed through the Infoprint Installer, you can verify that you have all the necessary executables required to run the Email feature and configure the Lotus Notes Server in your Infoprint AIX server to send email to other AIX servers.

Note that if you plan to use Email to send large PDF files consisting of fifty-page attachments, you will need to expand the size of the `/var/psf/segments` file system to 500 MB.

Verifying Email Files

If you are using the UNIX mail facility, there are no special executables. If you are using the Lotus Notes Server, ensure that:

1. `sendmemo` resides in the `/usr/lpp/psf/bin` directory cited above.
2. the `libnotes_r.a` executable resides in the `/usr/local/lib` directory.
3. The `infofax.cfg` file resides in the `/usr/lpp/psf/fax` directory and contains the following line to define whether your email system uses the UNIX mail facility (`unix`) or the Lotus Notes Server facility (`notes`):

```
smtp_server = notes      #Using the Lotus Notes Server
smtp_server = unix      #Using UNIX for mail
```

Configuring the Lotus Notes Server

If you are using the Lotus Notes Server facility to send email, you must use the following procedure to configure the Simple Message Transfer Protocol (SMTP) MTA for sending mail beyond your Infoprint AIX server. After you have run the [Infoprint Installer](#), complete the following procedure:

1. Logon to your Infoprint AIX server as **root**.
2. Verify that the `/notesr4/notes.ini` file contains the following line:

```
ServerTasks=Replica,Router,Update,Stats,AMgr,Adminp,....SMTPMTA
```

If this line is missing, the SMTP mailbox will not be able to connect with the external internet and send your mail outside your primary Infoprint AIX server.

From the AIX command line, type:

- `./opt/lotus/scripts/domino_env`

This procedure exports the path necessary to display the Lotus Notes server configuration window. Note that the dot (.) that precedes the first forward slash (/) is necessary to ensure that the current shell is set by this script.

1. From the AIX command line, move to the directory where your Notes Server configuration code is stored by typing `cd /notesr4`.
2. Open the Lotus Notes interface by typing `notes`.
3. From the **Lotus Notes - Workspace at PrintServer** window, double-click on the **Infoprint Manager's Address Book** (an open book) icon.
4. From the **Lotus Notes - Infoprint Manager's Address Book - Server** window, you must make changes to the Connections, Domains, and Servers records if you want to send jobs to remote servers.

Configuring the Connections Record

This record is used during the transfer of mail from your SMTP mailbox to the Internet.

1. From the **Lotus Notes - Infoprint Manager's Address Book - Server** window, click on the **Connections** record that is listed under the **Server** folder on the left side of the screen.

This action changes the right side of the screen to show a **PrintServer/Infoprint Manager** document that consists of a default *smtpaddr* where *smtpaddr* indicates a Simple Message Transfer Protocol (SMTP) address in dotted decimal notation format and a default **Local Network**. Your network administrator should know the SMTP address required at your site.

2. From the **Lotus Notes - Infoprint Manager's Address Book - Server/Servers** window, click on the *smtpaddr* address.
3. From the **SERVER CONNECTION:PrintServer/Infoprint Manager** to *smtpaddr* window, fill in the following values. Note that these values must be specified exactly as shown below.

Field	Variable
Connection type	<i>SMTP</i>
Source server	<i>PrintServer/Infoprint Manager</i>
Source domain	<i>Infoprint Manager</i>
Destination server	<i>All internet servers</i> Specifies the mail server name. This is a text field that can be used for descriptive purposes.
Destination domain	<i>TheInternet</i>
Connection	<i>ENABLED</i>
Optional Network Address	<i>smtpDNSServername</i> where <i>smtpDNSServername</i> indicates fully-qualified name used at your installation, such as <i>relay.us.company.com</i> .

4. Once you have specified these values, save, then close the file.
5. From the **Lotus Notes - Infoprint Manager's Address Book - Server/Servers** window, click on the default **Local Network**.

6. From the **SERVER CONNECTION:PrintServer/Infoprint Manager to deflocnet** window, where *deflocnet* is the name of the default Local Network, ensure that the **Schedule:** value in the **Scheduled Connection** section is *DISABLED*.

Once you have specified this value, save, then close the file.

Now you are ready to configure the [Domains](#) records.

Configuring the Domains Record

1. From the **Lotus Notes - Infoprint Manager's Address Book - Server/Servers** window, on the **Domains** file that is listed under the **Server** folder on the left side of the screen.

This action changes the right side of the screen to show a **Foreign SMTP Domain** document and a **Global Domain**, both of which are dormant by default.

2. From the **Lotus Notes - Infoprint Manager's Address Book - Server/Servers** window, click on the **TheInternet** portion of the **Foreign SMTP Domain** record.

From the **DOMAIN:*.*** window, fill in the following values. Note that these values must be specified exactly as shown below.

Field	Variable
Domain type	<i>Foreign SMTP Domain</i>
Domain name	<i>TheInternet</i>

Once you have specified these values, save and close the file before returning to the **Lotus Notes - Infoprint Manager's Address Book - Server/Servers** window.

Click on the **DAN ONE Domain** record.

From the **DOMAIN: DAN ONE** window, fill in the following values. Note that these values must be specified exactly as shown on the next page

Field	Variable
Domain type	<i>Global Domain</i>
Global Domain name	<i>Dan One</i>
Global Domain role	<i>SMTP MTA</i>

- Once you have specified these values, save and close the file before returning to the **Lotus Notes - Infoprint Manager's Address Book - Server/Servers** window.

Now you are ready to configure the [Servers](#) record.

Configuring the Servers Record

- From the **Lotus Notes - Infoprint Manager's Address Book - Server/Servers** window, on the **Servers** file that is listed under the **Server** folder on the left side of the screen.

This action changes the right side of the screen to show an **Infoprint Manager** document, which contains a **PrintServer/Infoprint Manager** document.

From the **Lotus Notes - Infoprint Manager's Address Book - Server/Servers** window, click on the **PrintServer/Infoprint Manager** document.

- From the **SERVER:PrintServer/Infoprint Manager** window, fill in the following values. Note that these values must be specified exactly as shown below:

Field	Variable
Server name	<i>PrintServer/Infoprint Manager</i>
Domain name	<i>Infoprint Manager</i>

- Open the **Network Configuration** link and ensure that you have specified the following on the first line:

Port	Notes Network	Net Address
<i>LAN1</i>	<i>TCP/IP</i>	<i>n.nn.nnn.nn</i> where <i>n.nn.nnn.nn</i> represents the dotted decimal IP address of the Infoprint AIX server where this Lotus Notes server resides.

Ensure that you Enable this set of values in the final column.

- Open the **Internet Message Transfer Agent (SMTP MTA)** link to verify that the following values have been specified under the **General** topic:

Field	Variable
Global domain name	<i>Dan One</i>
Fully qualified Internet host name	<i>servername</i> where <i>servername</i> is the fully-qualified name of this Infoprint AIX server.

- From this **Internet Message Transfer Agent (SMTP MTA)** link, go to the **Conversion Options** topic to modify message formats:

Message typeface

Specify the font of choice to replace the Courier default, such as *Times Roman*.

Message point size

Specify the point size for the messages you send, such as either *10* or *12*.

Message Content

Specify 'Users without Lotus Notes' to ensure that your Email does not append a second file named **encap2.ond** with each submission.

6. Save these values.

Once you have completed configuring and saving these three records, you must [create an Email destination on the Infoprint AIX server](#), using the one of the procedures described on page 7.

Once you have defined Email destinations on the Infoprint AIX server, you can reboot the Infoprint AIX server (which will start the resident Lotus Notes server) and begin [Submitting Email Jobs](#) at <ftp://ftp.software.ibm.com/printers/specs/mproc45.pdf> on the Web within the **Miscellaneous Procedures Define on the Web** Portable Document Format (PDF) file.