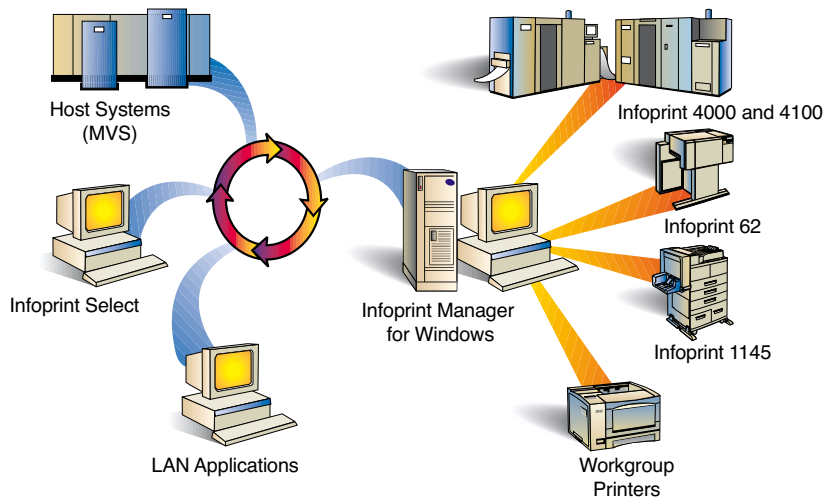


## IBM Infoprint Manager for Windows



### Highlights

- ***Improves output management efficiency, helping save time and money***
- ***Manages and monitors printing resources from remote locations***
- ***Enables intelligent document routing and scheduling***
- ***Notifies administrators, operators and users when printing events occur***
- ***Balances printer workload***
- ***Shares printers between host and LAN applications***

### Managing output across the distributed enterprise

Even in today's Web-enabled business environment, most business communication is on paper. It's clear that your output infrastructure is a vital component of your critical business functions. Your ability to control the print and output process, especially across the global enterprise, is an important part of an overall IT strategy.

IBM® Infoprint® Manager for Windows® provides centralized control of your output infrastructure for maximum efficiency. It enables diverse types of information—from a variety of sources—to be enhanced, printed, stored, retrieved and presented on the Web. Automated job scheduling, accounting and tracking help users save time and money by allowing them to print multiple copies within—and submit print jobs directly from—their applications. And Infoprint Manager for Windows integrates more easily than ever into SAP for output management in an ERP environment.

### Manage and monitor from anywhere in your enterprise

Infoprint Manager for Windows allows centralized management of printers and jobs through a graphical user interface, so you can remotely view, set or change the characteristics or defaults of both printers and jobs easily, from anywhere in your enterprise.

You can quickly start, stop, delete or move any print job; monitor the status of printers and print jobs; and start, stop, forward-space, back-space or shut down printers—all from any workstation in your network.

### Route and schedule documents intelligently

Infoprint Manager for Windows can intelligently match each print job with the right printer, and includes tools that allow users to route and schedule documents to be printed based on size or assessed priority. Jobs can be matched to destinations based on size, resolution, groups, printer models or media types, and automatically scheduled for destinations that support their characteristics, such as duplexing or other document formats. Matching

the right job with the right printer helps maximize productivity and minimize the need for costly reprints.

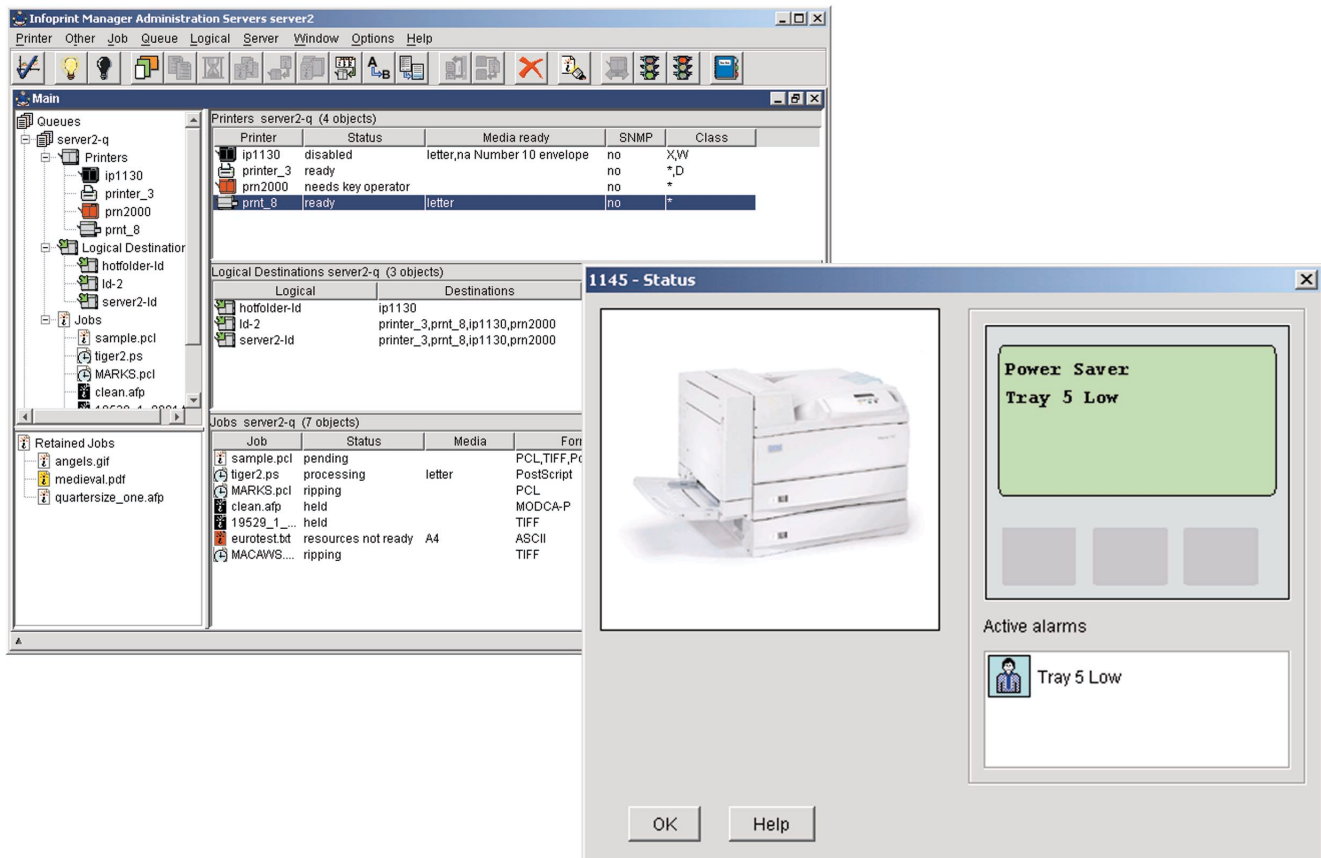
### Notify users and operators promptly

To minimize downtime, Infoprint Manager for Windows allows for automatic event notification of printer status and problems, including sending e-mail alerts to wireless devices. Each printer can be customized to notify specific personnel when certain events occur, such as low toner or paper jams. Operators can be notified with customized messages when a job is submitted, has started printing and is complete.

### Maximize printer utilization

With Infoprint Manager for Windows, you can configure your printing environment to balance workload across multiple printers, to avoid bottlenecks and maximize utilization, including:

- *Cluster printers*
- *Easily reroute jobs while replacing supplies or performing preventative maintenance*
- *Configure to hold jobs that fail and automatically disable printers with problems*
- *Transform data and print concurrently*
- *Save processed files for efficient reprinting or for printing multiple copies*
- *Configure to retry jobs automatically upon network failures*
- *Support multiple print datastreams on the same printer*



**Leverage existing investments**

Infoprint Manager for Windows enables you to receive jobs from multiple sources—including the Windows desktop and IPP clients—and print data from mainframe systems via Download for OS/390™, PSF™ Direct and Distributed Print Facility (DPF).

You can also share printers between host and LAN applications by routing data to printers attached to a TCP/IP network. Using a single printer for both host and LAN applications better leverages your existing investments and maximizes productivity.

**Drive print and output in a variety of environments**

Infoprint Manager for Windows gives you flexibility for the diverse print and output needs of your enterprise. Datastream transforms allow you to accept jobs from different applications and route to the appropriate print device, including IBM and non-IBM printers. You can efficiently leverage new print capabilities without changing your existing applications, datastreams and print commands.

**Enable versatility for evolving enterprises**

Designed to meet the enterprise needs of growing businesses, Infoprint Manager for Windows allows users to send jobs from any workstation on the LAN to any printer it controls. With Infoprint Manager for Windows, you can improve throughput and optimize utilization by distributing Infoprint Manager server tasks across different workstations. Different Infoprint Manager servers can process commands and receive job submission requests, drive printers, and manage and schedule jobs for printing.

**Customizing a solution with comprehensive offerings**

To help you better manage output across your enterprise, IBM provides a range of offerings that complement the capabilities of Infoprint Manager for Windows. AFP2Web Transform allows you to present customer information using the Internet without making changes to your production environment. Infoprint Workflow and

other services offerings can help optimize output workflow, achieve better process control and reduce costs. Together with our unmatched service and support, Infoprint Manager for Windows brings power to the printer to help improve efficiency, productivity and bottom-line profitability.

**For more information**

To learn more about Infoprint Manager for Windows, call IBM Printing Systems at 1 800 358-6661, or visit:

**ibm.com/printers/ipm**

## IBM Infoprint Manager for Windows at a glance

<b>Manage and monitor printers</b>	View, set or change printer and job characteristics Monitor printer and job status Start and stop jobs and printers
<b>Intelligent document routing/scheduling</b>	Schedule jobs based on: <ul style="list-style-type: none"><li>• assessed priority</li><li>• the order they were submitted</li><li>• size</li></ul> Match jobs to destinations based on: <ul style="list-style-type: none"><li>• job size /group</li><li>• datastream resolution</li><li>• printer model or name</li><li>• media type/forms</li></ul> Control when jobs print by specifying: <ul style="list-style-type: none"><li>• a "job-discard" time</li><li>• a job group (batch)</li></ul> Route jobs only to destinations that support their characteristics <ul style="list-style-type: none"><li>• duplex or document format (Adobe® PostScript®, PCL)</li></ul>
<b>User, administrator and operator notification</b>	Automatic event notification of printer status and problems: e-mail, notification client windows, a file, wireless, exit
<b>Balance printer workload</b>	Pool printers to maximize utilization Re-route jobs during supplies changes or maintenance Configure to hold jobs that fail or automatically disable printers with problems Transform data and print concurrently Configure to retry jobs automatically upon network failures Support multiple datastreams on the same printer
<b>Receive jobs from multiple sources</b>	Native Microsoft® Windows® gateway, IPP gateway, Download for OS/390, PSF Direct, lpr/lpd, Infoprint Select client, DPF, hot folders
<b>Share printers between applications</b>	Route data to TCP/IP-attached LAN printers Use a single printer for both host and LAN applications
<b>Support a wide range of printers</b>	Infoprint Manager for Windows is capable of converting the following datastreams to IPDS, PCL4, PCL5, PCL5c or PPDS: AFP, ASCII, DBCS ASCII, GIF, EBCDIC, JPEG, PCL (6 and below), PDF (1.4 and below), PostScript (level 3 and below), PPDS, SAP, ABAP and OTF (with purchase of SAP Print Feature), S/370 line data and TIFF. In addition, Infoprint Manager will pass through any datastream including PostScript, PCL5e, PCL6 and PCLXL.
<b>Minimum Prerequisites</b>	Infoprint Manager Workstation with 450 MHz Pentium® (or equivalent) processor, 128MB RAM, 10 GB hard disk, CD-ROM and graphics display Microsoft Windows 2000 (Professional or Server) or Microsoft Windows NT Version 4.0 Server at Service Pack level 6a or higher TCP/IP printer connection (Token-Ring, Ethernet, FDDI) Microsoft Internet Explorer® 5.0 or higher on NT
<b>Optional features</b>	<ul style="list-style-type: none"><li>• Page Printer Formatting Aid</li><li>• Kanji fonts</li><li>• SAP Print</li></ul>



© International Business Machines Corporation 2002

### IBM Printing Systems

Dept. HT7/001H  
P.O. Box 1900  
Boulder, CO 80301

Printed in the United States of America  
05-02

All Rights Reserved

IBM, the IBM logo, the e(logo), the e-business logo, Advanced Function Presentation, AFP, AIX, Infoprint, Intelligent Printer Data Stream, IPDS and MVS are trademarks or registered trademarks of International Business Machines Corporation in the United States, other countries, or both.

Other company, product and service names may be trademarks or service marks of others.

Microsoft, Windows, Windows NT and Internet Explorer are trademarks or registered trademarks of Microsoft Corporation.

Adobe and PostScript are registered trademarks of Adobe Systems, Inc.

Pentium is a trademark of Intel Corporation in the United States, other countries, or both.

References in this publication to IBM products or services do not imply that IBM intends to make them available in all countries in which IBM operates.

Visit the IBM Printing Systems Web site at [ibm.com](http://ibm.com)

The IBM home page can be found on the Internet at [ibm.com](http://ibm.com)