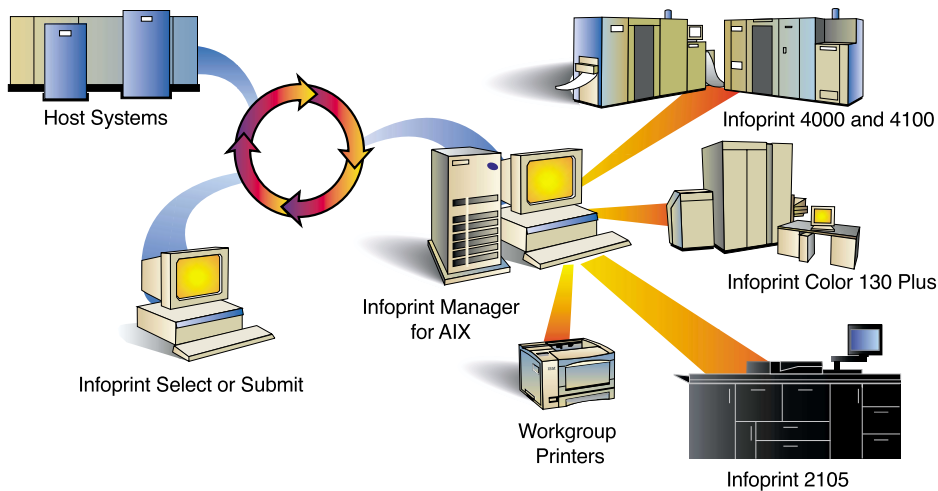


A scalable software solution designed to boost printing productivity enterprisewide



IBM Infoprint Manager for AIX



IBM Infoprint® Manager for AIX® can help unify your output infrastructure for maximum efficiency. It enables diverse types of information—from a variety of sources—to be enhanced, printed, stored, retrieved, presented on the Web, faxed or e-mailed. The latest release, Version 4.1, enriches our robust suite of functions and capabilities and adds the ability to communicate with an extended set of applications and hardware devices. The result: a more efficient and effective output management system that leverages your existing investments for better support of your business objectives.

Highlights

- **Enables greater flexibility throughout the entire output management process**
- **Improves output management efficiency, helping save time and money**
- **Supports a wide variety of hardware devices, data types and graphic files**
- **Notifies users, operators and administrators when printing events occur**

Meeting digital print demands with efficient workflow technology

Even in today's Web-enabled business environment, most business communication is on paper. It's clear that your output infrastructure is a vital component of your critical business functions. Integrating your output infrastructure to leverage existing investments and extract maximum value from the business communication process, whether internal or external, has never been more imperative.

Providing increased efficiency through innovative features

Infoprint Manager for AIX combines a powerful Advanced Function Printing™ (AFP™) print driver, comprehensive datastream transforms and extensive output management capabilities into a single solution that provides the control you need.

Centralized management of print resources—Through an easy-to-use interface, Infoprint Manager for AIX lets you manage and monitor your printers, from any network client and even from remote locations. You can quickly start, stop, delete or move any print job; monitor the status of printers and print jobs; and start, stop, forward-space, back-space or shut down printers—all from any workstation in your network.

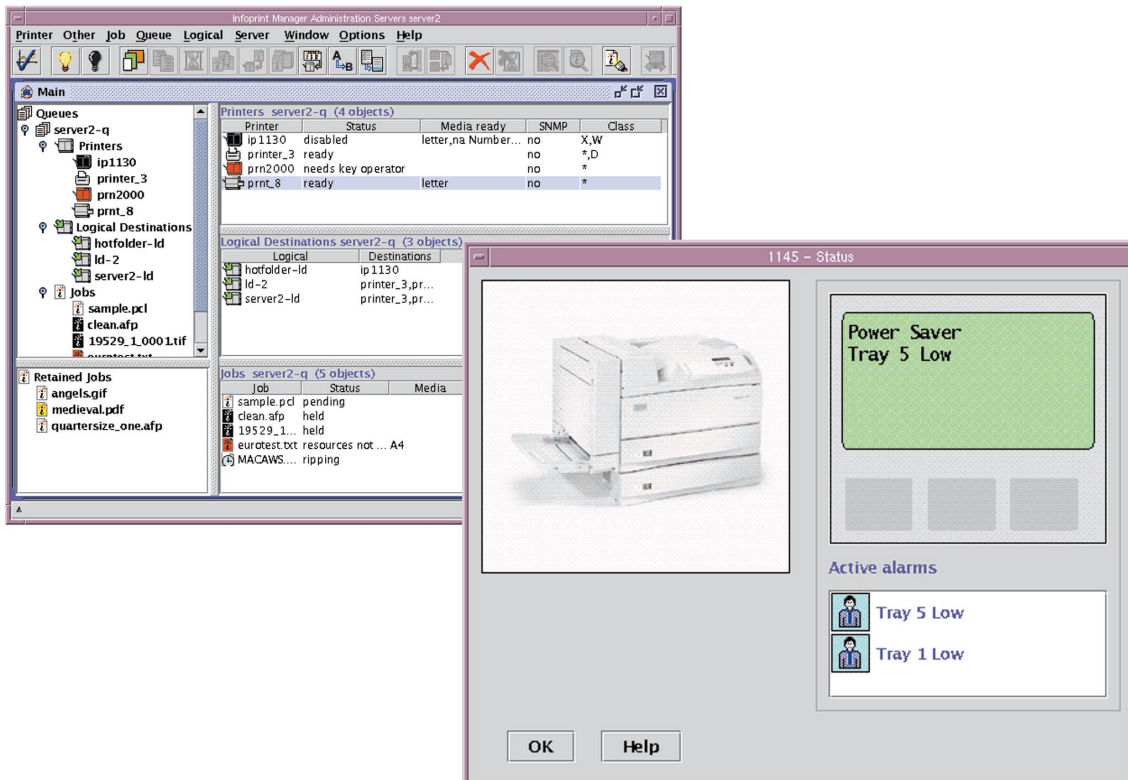
User and operator notification—To minimize downtime, Infoprint Manager for AIX allows for automatic event notification of printer status and problems, including sending e-mail alerts to wireless devices. Each printer

can be customized to notify specific personnel when certain events occur, such as low toner or paper jams. Operators can be notified with customized messages when a job is submitted, has started printing and is complete.

Intelligent document routing and scheduling—Infoprint Manager for AIX can match each print job with the right printer, and includes tools that allow users to route and schedule documents to be printed. Jobs can be matched to destinations based on size, resolution, groups, printer models or media types, and automatically scheduled for destinations that support their characteristics, such as duplexing or other document formats.

With Infoprint Manager for AIX, you can balance the workload across your print environment, maximizing utilization of existing investments. You can cluster printers, support multiple datastreams on the same printer and efficiently re-route existing jobs if a printer goes offline for maintenance.

Drive print and output in a variety of environments—Infoprint Manager for AIX gives you the flexibility to handle the diverse print and output needs of your enterprise. It includes datastream transforms that allow you to accept jobs from different applications and route to the appropriate print device, including IBM and non-IBM printers. You can efficiently leverage new print capabilities without changing your existing applications, datastreams and print commands.



Meeting the demands of centralized and distributed statement production printing

Together with Infoprint Workflow and professional services from IBM, Infoprint Manager for AIX can help you better manage and control high-volume printing, such as transactional statements. Infoprint Manager for AIX provides reliable queue and job management and workflow automation to protect data integrity, so documents can be printed completely and accurately the first time, minimizing job repeats. And you'll have a realtime view of all production stages and a single point of control for the entire process.

Managing output across the distributed enterprise

The scalable, server-based print management capabilities of Infoprint Manager for AIX can help reduce overall printing costs in the distributed environment by automating vital functions, simplifying user operation and facilitating electronic storage and reprinting. Automated job scheduling, accounting and tracking help users save time and money by allowing them to print multiple copies within—and

submit print jobs directly from—their applications. And Infoprint Manager for AIX integrates more easily than ever into SAP to provide output management in an ERP environment.

Providing flexibility in the print-on-demand environment

With the help of Infoprint Manager's comprehensive digital system, commercial and in-plant print shops can consistently create single-copy, dynamic, variable-data documents, on time and on budget, using existing processes and tools. Its point-and-click user interface lets operators manage printers and print files from a single server. With support for document impositioning, Infoprint Manager allows users to accept scanned hard copy documents, assemble and submit jobs for just-in-time printing.

Customizing a solution with comprehensive offerings

To help you better manage output across your enterprise, IBM provides a range of offerings that complement the capabilities of Infoprint Manager for AIX.

Infoprint XT allows you to easily transform traditional Xerox datastreams to AFP and print to distributed Intelligent Printer Data Stream™ (IPDS™), Adobe® PostScript®¹ and PCL devices.

Infoprint View provides on-screen proofing for print-on-demand jobs to speed the production process.

Infoprint Scan provides the ability to scan hardcopy documents using patented grayscale technology.

AFP2Web Transform allows you to present customer information using the Internet without making changes to your production environment.

Professional Services offerings include Infoprint Workflow, to help you achieve better process control and reduce costs, and a range of solutions for enhanced job ticketing, document storage and retrieval and Web-based job submission and access.

Together with our unmatched service and support, Infoprint Manager for AIX brings power to the printer to help improve your efficiency, productivity and bottom-line profitability.

For more information

To learn more about Infoprint Manager for AIX Version 4.1, call IBM Printing Systems at 1 800 358-6661, or visit: ibm.com/printers/ipm



© International Business Machines Corporation 2002

IBM Printing Systems

Dept. HT7/001H
P.O. Box 1900
Boulder, CO 80301

Printed in the United States of America
05-02
All Rights Reserved

IBM, the IBM logo, the e(logo), the e-business logo, Advanced Function Presentation, AFP, AIX, Infoprint, Intelligent Printer Data Stream, IPDS and MVS are trademarks or registered trademarks of International Business Machines Corporation in the United States, other countries, or both.

Other company, product and service names may be trademarks or service marks of others.

Microsoft, Windows, Windows NT and Internet Explorer are trademarks or registered trademarks of Microsoft Corporation.

Adobe and PostScript are registered trademarks of Adobe Systems, Inc.

Pentium is a trademark of Intel Corporation in the United States, other countries, or both.

References in this publication to IBM products or services do not imply that IBM intends to make them available in all countries in which IBM operates.

Visit the IBM Printing Systems Web site at ibm.com/printers

The IBM home page can be found on the Internet at ibm.com

IBM Infoprint Manager for AIX at a glance

Manage and monitor printers	View, set or change printer and job characteristics Monitor printer and job status Start and stop jobs and printers
Intelligent document routing/scheduling	Schedule jobs based on: <ul style="list-style-type: none">• order of submission• assessed priority• size Match jobs to destinations based on: <ul style="list-style-type: none">• job size /group• datastream resolution• printer model or name• media type/forms Control when jobs print by specifying: <ul style="list-style-type: none">• a "job-discard" time• a job group (batch) Route jobs only to destinations that support their characteristics <ul style="list-style-type: none">• duplex or document format (Adobe® PostScript®, PCL)
User, administrator and operator notification	Automatic event notification of printer status and problems: e-mail, notification client windows, a file, wireless, exit
Balance printer workload	Pool printers to maximize utilization Re-route jobs during supplies changes or maintenance Configure to hold jobs that fail or automatically disable printers with problems Transform data and print concurrently Configure to retry jobs automatically upon network failures Support multiple datastreams on the same printer
Receive jobs from multiple sources	<ul style="list-style-type: none">• IPPrintWay• SAP• lpr/lpd• Download for OS/390• Infoprint Select• Hot folders• PSF Direct• Infoprint Submit
Share printers between applications	Route data to TCP/IP-attached LAN printers Use a single printer for both host and LAN applications
Support a wide range of printers	Infoprint Manager for AIX is capable of converting the following datastreams to IPDS, PCL4, PCL5, PCL5c or PPDS: AFP, ASCII, DBCS ASCII, GIF, EBCDIC, JPEG, PCL (6 and below), PDF (1.4 and below), PostScript (Level 3 and below), PPDS, SAP, ABAP and OTF (with purchase of SAP Print Feature), S/370 line data, TIFF and PPML. In addition, Infoprint Manager will pass through any datastream including PostScript, PCL5e, PCL6 and PCLXL.
Minimum Prerequisites	IBM @server pSeries server with AIX operating system 4.3.3 or 5.1 TCP/IP printer connection (Token-Ring, Ethernet, FDDI)
Optional features	<ul style="list-style-type: none">• Print-on-Demand Package (GUI, PPML to AFP transform, imposition assist solution and Infoprint Submit)• Page Printer Formatting Aid• Kanji fonts• DBCS Font Downloader• SAP Print• Fax Lines