



# Configuring and Using Infoprint Fax



## Figures

1.	The Actual Destination Templates pane. . . . .	6
2.	The Fax icon . . . . .	7
3.	The Add Fax Destination pop-up window. . . . .	7
4.	Queue Template Type from the Servers window. . . . .	8
5.	The Add Queue pop-up window. . . . .	9
6.	The Fax icon. . . . .	9
7.	The Add Fax Destination pop-up window. . . . .	10
8.	The Server/Objects window. . . . .	11
9.	The Add Logical Destination pop-up window. . . . .	12
10.	cover1.pcl File Provided with Infoprint Manager for AIX. . . . .	13
11.	Display of cover1.pcl File Provided with Infoprint Manager for AIX. . . . .	14
12.	cover1.txt File Provided with Infoprint Manager for AIX. . . . .	15
13.	Display of cover1.txt File Provided with Infoprint Manager for AIX. . . . .	16
14.	Infoprint Port Window. . . . .	22
15.	Infoprint Fax Pop-up Window. . . . .	23



## Contents

<b>Figures . . . . .</b>	<b>iii</b>	Submitting a Fax Job with the Default Cover Sheet Values Specified . . . . .	20
<b>Chapter 1. Using Infoprint Fax . . . . .</b>	<b>1</b>	Submitting a Fax Job with a Customized Cover Sheet . . . . .	20
Installing the Infoprint Fax Feature . . . . .	1	Sending ASCII Data through Infoprint Manager Fax Support . . . . .	21
Updating the Fax Feature when Lightning Fax 6.5 is Already Installed . . . . .	3	Using the Infoprint Select Client . . . . .	21
<b>Chapter 2. Configuring Fax Out (Sending) . . . . .</b>	<b>5</b>	<b>Chapter 4. Configuring Fax In (Receiving) . . . . .</b>	<b>25</b>
Creating an Infoprint Fax Destination . . . . .	5	Mapping Channel Numbers to Phone Numbers with SMIT . . . . .	25
Using the VSM Basic Server GUI to Create a Fax Actual Destination . . . . .	5	Configuring the Channel Attribute Files for PSF Actual Destinations. . . . .	26
Using the VSM Advanced Server GUI for Creating a FAX Actual Destination . . . . .	7	Delivering Incoming Faxes to a SAP System . . . . .	26
Configuring to Fax to A4 Paper. . . . .	12	Distributing Faxes to Multiple Printers . . . . .	26
Scaling the Width and Height of Fax Output . . . . .	12	<b>Appendix. Country Code Numbers for Faxing . . . . .</b>	<b>29</b>
Specifying Fax Cover Sheets. . . . .	12	<b>Index . . . . .</b>	<b>33</b>
<b>Chapter 3. Submitting Fax Jobs . . . . .</b>	<b>19</b>		
Using the AIX Command Line . . . . .	19		
Submitting a Basic Fax Job . . . . .	19		



## Chapter 1. Using Infoprint Fax

IBM Infoprint Manager 3.2.0 provides either a single phone line feature or multiple phone line feature for sending and receiving faxes. The multiple phone line feature is a priced feature.

Before you can configure and run the Infoprint Manager Fax, you must ensure that :

- your installation has an analog phone line for each fax line (or channel) that you intend to use.
- you have purchased and installed either the GammaLink PCI or ISA Fax Board, or the Interstar Lightning Fax Server version of this Board (such may be referred to as 'Card' in subsequent documentation). The Infoprint Manager Fax feature supports Dialogic Gammalink Fax Boards CPi/100 (ISA only), CPi/200, and CPi/400.

For more information on how to obtain this Fax board, see the Intel (R) Communications Systems Products Fax Boards web page at [http://www.intel.com/network/csp/products/fax\\_index.htm](http://www.intel.com/network/csp/products/fax_index.htm).

If you plan to use more than a single fax line, you must select the Infoprint Fax (multiple lines) feature on the Infoprint Installer. Before doing so, contact the IBM TECHLINE toll free number (1-888-426-5525 Option 5, Option 1) to obtain the key numbers and the correct license:

1. From an AIX window, specify `uname -a` to obtain the planer ID of your system.
2. Send that planer ID number in a file to your IBM service representative.
3. Your service representative will send you a file -- **LFlic.txt** -- which you must use in step 5 of the procedure that follows.

---

## Installing the Infoprint Fax Feature

Use the following procedure to install the Infoprint Fax feature:

1. Install the Fax card by putting it in any available PCI or ISA slot in your Infoprint AIX server.  
The PCI card supports two lines as the fewest lines available. You do not require an additional license to use this card for one-line support.
2. Plug the fax phone lines into the phone jack on the back of the card on the Infoprint AIX server so that the fax phone line links to the channels. Refer to your fax board documentation to determine which phone jack applies to which channel.
3. If you have already installed Lightning Fax Version 6.5 SP1 on your Infoprint AIX server, you must see Updating the Fax Feature when Lightning Fax 6.5 is Already Installed and follow the directions there before continuing to Step 4 of this procedure.
4. Run the Infoprint Installer, using the *Installing Infoprint Manager on Your AIX System* PDF file (38 KB) that can be found on either the Publications CD-ROM for Infoprint Manager for AIX 3.2, or the Infoprint Manager for AIX web site at [http://www.printers.ibm.com/R5PSC.NSF/Web/site\\_map32](http://www.printers.ibm.com/R5PSC.NSF/Web/site_map32).

Specify either the Infoprint Fax (single line) or the Infoprint Fax (multiple lines) feature and this utility will install Interstar Lightning Fax Server Software Version 6.5 SP1.

5. If you are installing the multiple line fax option, copy the **LFlic.txt** file that you obtained from IBM after following the directions in Chapter 1, "Using Infoprint Fax" on page 1, onto your Infoprint AIX server in the **/usr/lpp/lightningfax/lfaixserver** directory.

**Note:** This file replaces a file with the same name that resides on your system. If you do not obtain this file and replace the existing file on your server, you will be unable to use more than a single channel.

6. To configure the Lightning Fax Server Software files that control the GammaLink Fax card, access the **/etc** file system and use your AIX editor of choice to make the changes identified in Table 1.

**Note:** If you had previously installed an earlier version of the Infoprint Manager Fax feature, Infoprint Manager places copies of your old Fax configuration files in the **/tmp/FaxConfFiles** directory. You can access these files to update the default configuration files and ensure that your customizations of the Fax feature are not lost with each new install.

Table 1. Configuration Files and Values for Infoprint Fax Support

Fully-Qualified File Name/Changed Parameter	Value
/etc/lfaixdriver.conf  <i>NumChanISA=</i>  <i>NumChanMCA=</i>  <i>NumChanPCI=</i>  Under the <b>;channel specific info</b> section:  <i>ChannelX_Country=</i> where <b>X</b> indicates the channel number. For example, Channel 2 could specify <i>Channel2_Country=17</i> , which would indicate that channel 2 was set to the country code for Canada (which happens to work in the United States). For a complete set of country code numbers, see "Country Code Numbers for Faxing" on page 29.  <i>ChannelX_ServerIP=</i> where <b>X</b> indicates the channel number. For example, Channel 2 could specify <i>Channel2_ServerIP=9.99.98.3</i> .	Specify a numeric value to match the number of lines on your physical fax card (usually either 1, 2, or 4).  Fill in the appropriate parameter to reflect the type of adapter (ISA, MCA, or PCI) in use at your installation.  Specify the Internet Protocol (IP) address of your Infoprint AIX server.  <b>Note:</b> Be sure to change these parameters for the number of channels that you specify in this file.  You can obtain the value for <i>ChannelX_ServerIP=</i> where <b>X</b> by specifying the following command: <code>ping -c3 servername</code>
/etc/lfaixapi.conf  Under the <b>[Server Info]</b> section:  <i>Address=</i> value.	Specify the Internet Protocol (IP) address of your Infoprint AIX server.
/etc/lfaixapifbk.conf  Under the <b>[Server Info]</b> section:  <i>Address=</i> value.	Specify the Internet Protocol (IP) address of your Infoprint AIX server.



Table 1. Configuration Files and Values for Infoprint Fax Support (continued)

<p>/etc/lfaixserver.conf</p> <p>Under the <b>[Server Info]</b> section:</p> <p><i>Address</i>= value.</p> <p><i>RSAddress</i>=value</p>	<p>Specify the Internet Protocol (IP) address of your Infoprint AIX server (<i>Address</i>=value).</p> <p>Specify the Internet Protocol (IP) address of the rasterization server (<i>RSAddress</i>=value).</p> <p>In the default Infoprint Manager for AIX Fax configuration, both these parameters have the same value.</p>
<p>/usr/lpp/psf/fax/infofax.cfg</p> <p>Under the <b>[Server Info]</b> section:</p> <p><i>FAX_PREFIX</i>= value.</p>	<p>Specify the prefix for your phone number for sending faxes (fax-out).</p> <p>For example, if you must dial a '9' before the actual number, specify <i>FAX_PREFIX</i> = 9,.</p> <p>For example, if you must dial a '9' and a '1' before the actual number, specify <i>FAX_PREFIX</i> = 9,1.</p> <p>Note that the comma (,) indicates a five-second pause.</p>

7. Reboot your AIX Infoprint server.
8. To ensure that the AIX operating system's device drivers are reading the fax card, specify the following at an AIX command line: `lsdev -C | grep LF`  
If the operating system is reading the fax card, the response should be similar to the following:  
`LFAIXkdriver0 Available 01-18           GammaLink Fax Board`
9. Verify that the LightningFax software is working correctly with the fax card by waiting a few minutes for the LightningFax server to start, and then dialing each fax phone number from a phone.  
If working correctly, the fax card should make a connection after the second ring and produce the static sound that is peculiar to fax machines.

## Updating the Fax Feature when Lightning Fax 6.5 is Already Installed

If you attempt to install Infoprint Manager 3.2 with PTF IY11526 and have installed Lightning Fax Version 5.0 on your Infoprint AIX server, you can ignore this procedure.

If you have already installed Lightning Fax Version 6.5 on your Infoprint AIX server and then attempt to install Infoprint Manager 3.2 with PTF IY11526, the Infoprint Installer does not install the LightningFax that IBM supplies and does not put the IBM configuration files in the proper sub-directories.

To remove existing versions of Lightning Fax Version 6.5 from your Infoprint AIX server, use the following procedure:

1. Specify `smit` or `smitty` from an AIX command line and take the following path: **Software Installation and Maintenance --> Software Maintenance and Utilities --> Remove Installed Software.**
2. Use the **PF4** key to select the software filesets, then scroll down the list, and find all the `lightningfax.x` filesets for removal, where `x` (the second qualifier) indicates the fileset's purpose, such as `api` or `driver`.
3. Use the **PF7** key to select each fileset for removal, then press the **Enter** key to delete all the selected filesets at once.



## Chapter 2. Configuring Fax Out (Sending)

This topic consists of the following topics:

- “Creating an Infoprint Fax Destination”
- “Configuring to Fax to A4 Paper” on page 12
- “Scaling the Width and Height of Fax Output” on page 12
- “Specifying Fax Cover Sheets” on page 12

---

### Creating an Infoprint Fax Destination

Before you can send fax output through Infoprint Manager, you must create a Fax destination on your Infoprint AIX server. Please note that you can use either the Basic or the Advanced Server VSM graphical user interface (GUI) to perform this task. If you use the Advanced VSM GUI, you must perform additional steps to define both a print queue and a logical destination for the fax jobs.

**Note:** You cannot display the Fax destination in either the **Infoprint Manager Administration GUI** or the **Infoprint Manager Operations GUI**.

### Using the VSM Basic Server GUI to Create a Fax Actual Destination

1. From an AIX command line on your Infoprint AIX server, you can access the **Infoprint Administration** window by typing: `admingui`.
2. From the **Infoprint Administration** window, go to the **Template Area** and select the **Actual Destination Template** icon. This icon is in the first column of the second row (The **Information Area** field lists this as a Physical Printer Template Type). This step opens the **Actual Destination Templates** pane.

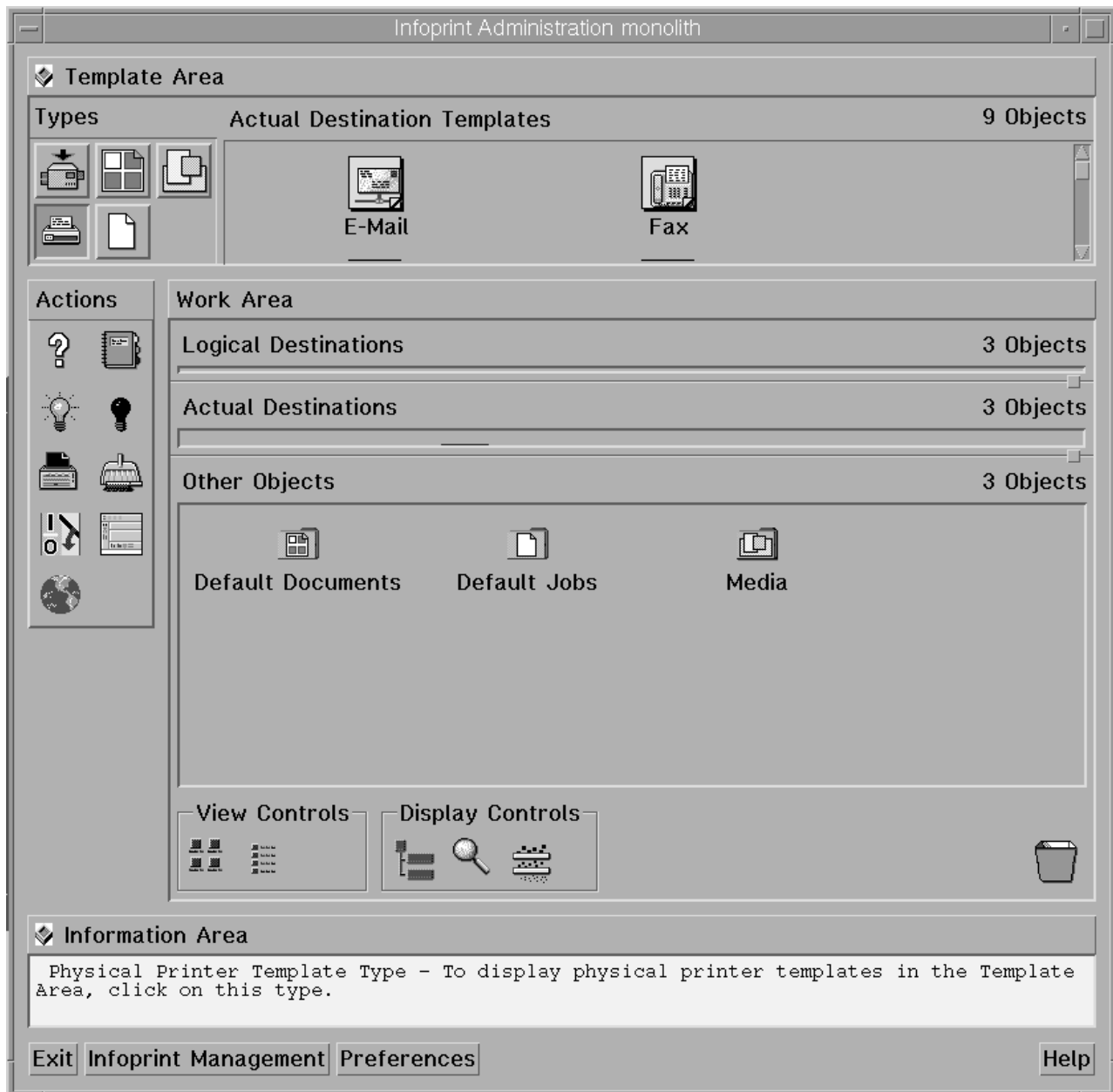


Figure 1. The Actual Destination Templates pane.

3. From the **Infoprint Administration** window, go to the bottom of the window and click on the **Preferences** button.  
This step opens the **User Preferences** pop-up window.  
If there is already a fax template in the set of templates, go to step 5. If a fax template does not exist, continue with step 3.
4. From the **User Preferences** pop-up window, click on the **List** button to the right of the **Display actual destination templates** field.  
This step opens the **Template selection** pop-up menu.
5. From the **Template selection** pop-up menu, click on the Fax name.  
This step puts the **Fax** template inside the **Actual Destination Templates** pane.

6. From the **Actual Destination Templates** pane, select the **Fax** icon and use the middle button of your mouse to drag it into the **Actual Destinations** pane.



Figure 2. The Fax icon .

7. From the **Select a Target Object** pop-up window, select the name of the AIX server where you want this destination to reside.  
Note that this window appears only when you have more than one server.
8. From the **Add Fax Destination** pop-up window, choose a name for your destination. This name should be no more than eight characters long.

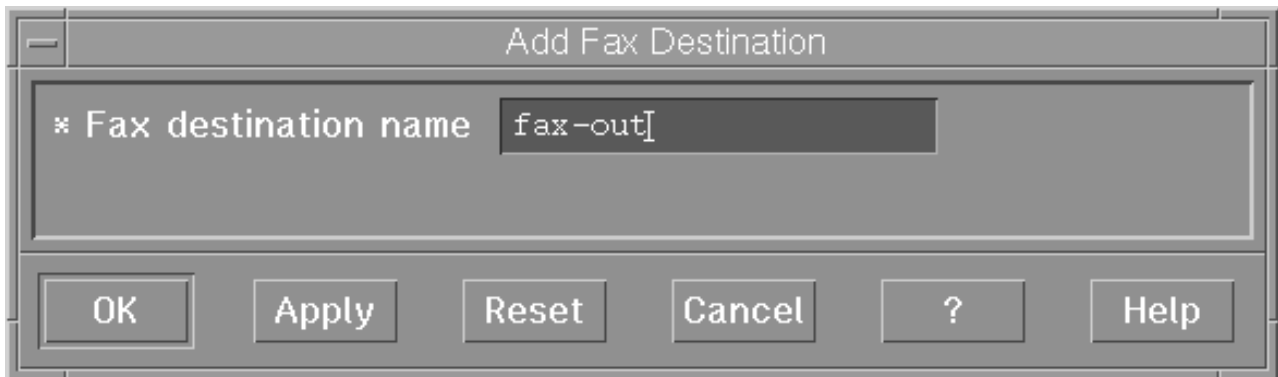


Figure 3. The Add Fax Destination pop-up window.

Once you choose a name for the destination (such as **fax-out**, an icon with that name appears in the **Actual Destinations** area. In addition Infoprint Manager creates a logical destination in the Logical Destinations pane with a similar name (such as **fax-out-server**, where **server** is the name of your AIX Infoprint server).

**Note:** You cannot create more than one fax destination for each server. If you attempt to do so, the system responds with a message and does not allow you to proceed.

9. To enable this destination, drag the **Enable** icon from the Actions area and drop it on the Fax actual destination that you just created.
10. To enable the logical destination, drag the **Enable** icon from the Actions area and drop it on the logical destination that you just created

## Using the VSM Advanced Server GUI for Creating a FAX Actual Destination

1. From an AIX command line on your Infoprint AIX server, you can access the **Servers** window by typing: `pdadmin`.

- From the **Servers** window, click on the **Queue Template Type** button that resides in the Types area.

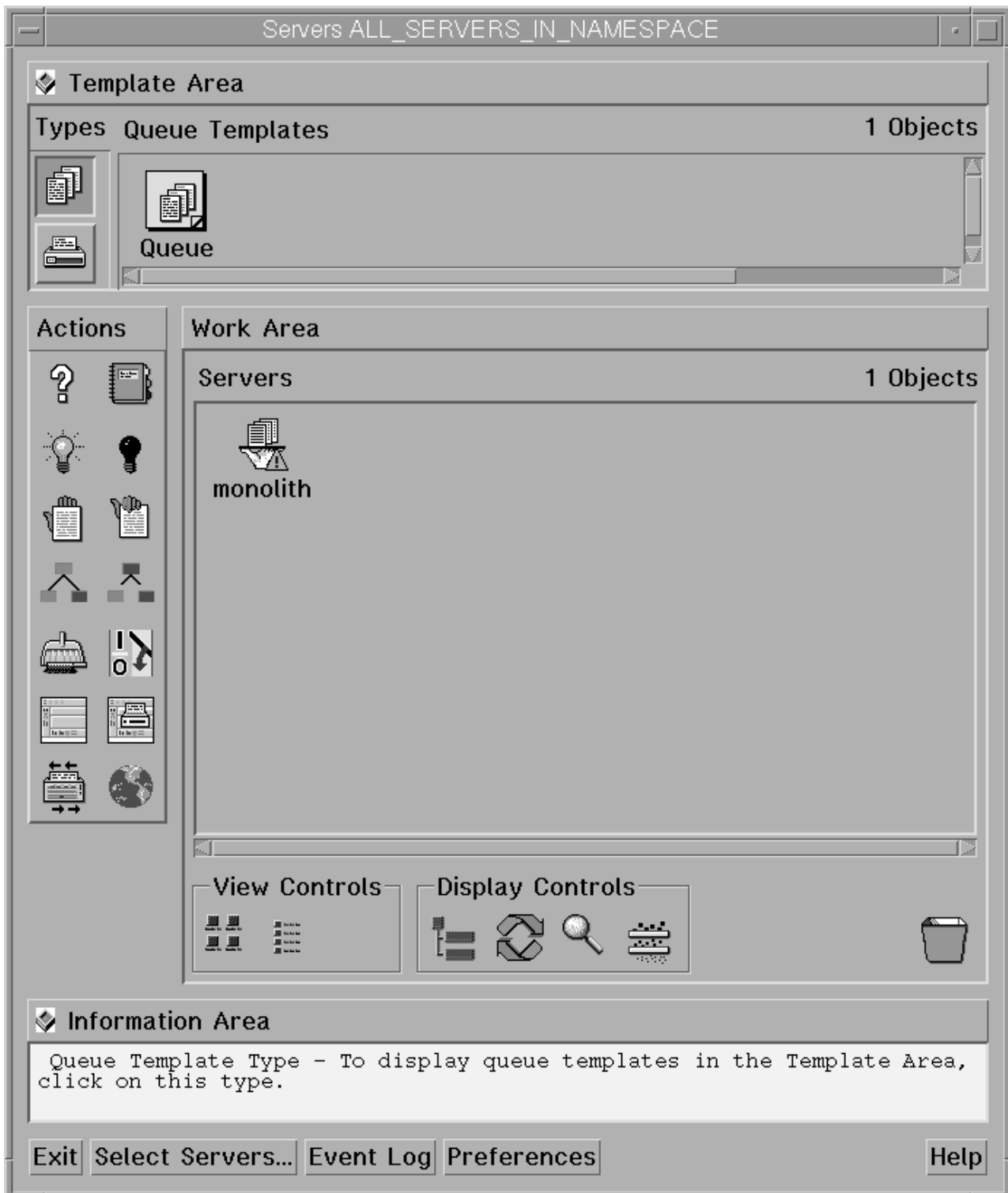


Figure 4. Queue Template Type from the Servers window.

- Drag the system-defined **Queue Template** icon from the Queue Templates pane onto the **server** icon that resides in the Servers pane of the Work Area.

- From the Add Queue pop-up window, specify a queue name in the **Queue name** field, such as **fax-out-q**. This step creates the print queue that connects the Logical Destination to the Actual Destination.

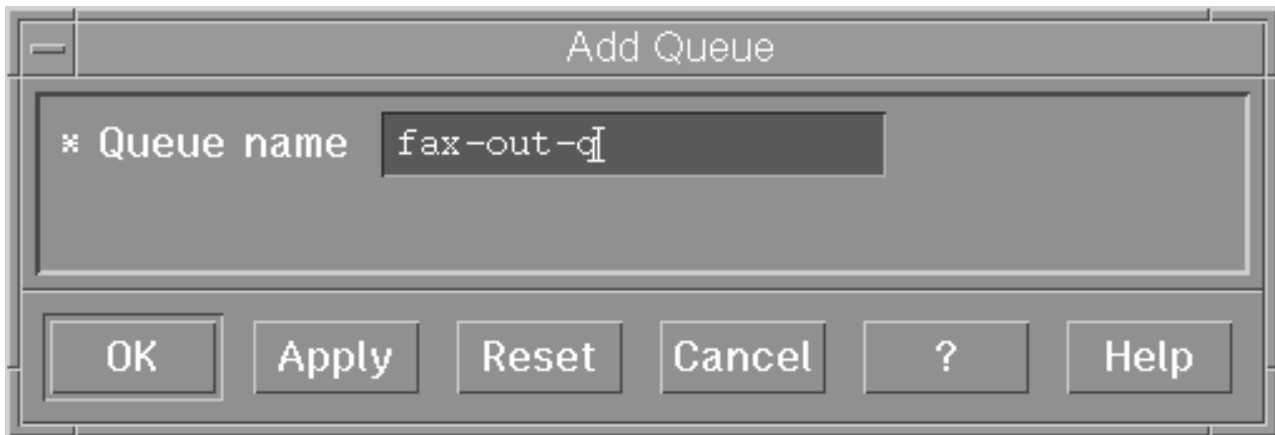


Figure 5. The Add Queue pop-up window.

- From the **Servers** window, click on the **Actual Destination Template Type** button that resides in the Types area.  
If there is already a fax template in the set of templates, go to step 8. If a fax template does not exist, continue with step 5.
- From the **Servers** window, go to the bottom of the window and click on the **Preferences** button. This step opens the **User Preferences** window.
- From the **User Preferences** window, click on the **List** button to the right of the **Display actual destination templates** field. This step opens the **Template selection** pop-up menu.
- From the Template selection pop-up menu, click on the **Fax** name. This step puts the **Fax** templates (displayed below) inside the **Actual Destination Templates** pane.



Figure 6. The Fax icon.

- Drag the system-defined **Fax Template** icon from the **Actual Destination Templates** pane onto the **server** icon that resides in the Servers area of the Work Area.
- From the Add Fax Destination pop-up window, specify an actual destination name in the **Fax destination name** field, such as **fax-out**, and use the queue you just created (**fax-out-q**) for the **Queue jobs are received from** field. Press **OK** to create the actual destination.

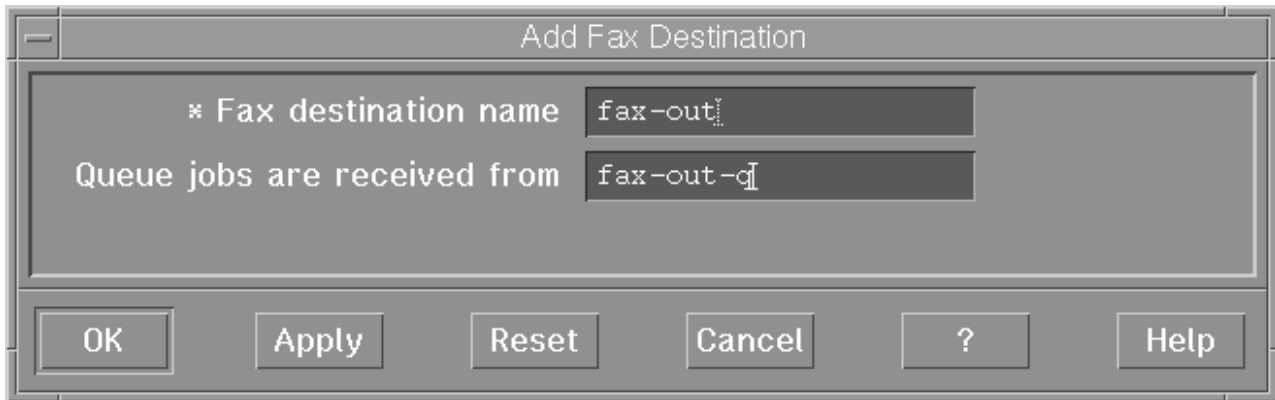


Figure 7. The Add Fax Destination pop-up window.

**Note:** You cannot create more than one fax destination on any one server. If you attempt to do so, the system responds with a message (cannot create more than 1 fax destinations) and does not allow you to proceed.

11. From the **Servers** window, highlight the server icon from the **Work Area** pane and double-click on the **Open Window** icon from the Actions area. This step opens the **Server/Objects** window, where you can create the Logical Destination for Fax.
12. From the **Server/Objects** window, you should see the **fax-out-q** queue you created in the **Queues** area. If it is not visible, drag down the sash on the right side of the **Work Area** pane (a small raised square) to open the Queues area.
13. From the **Server/Objects** window, drag the system-defined **Logical Destination** icon onto the **fax-out-q** icon that resides in the **Queues** pane.



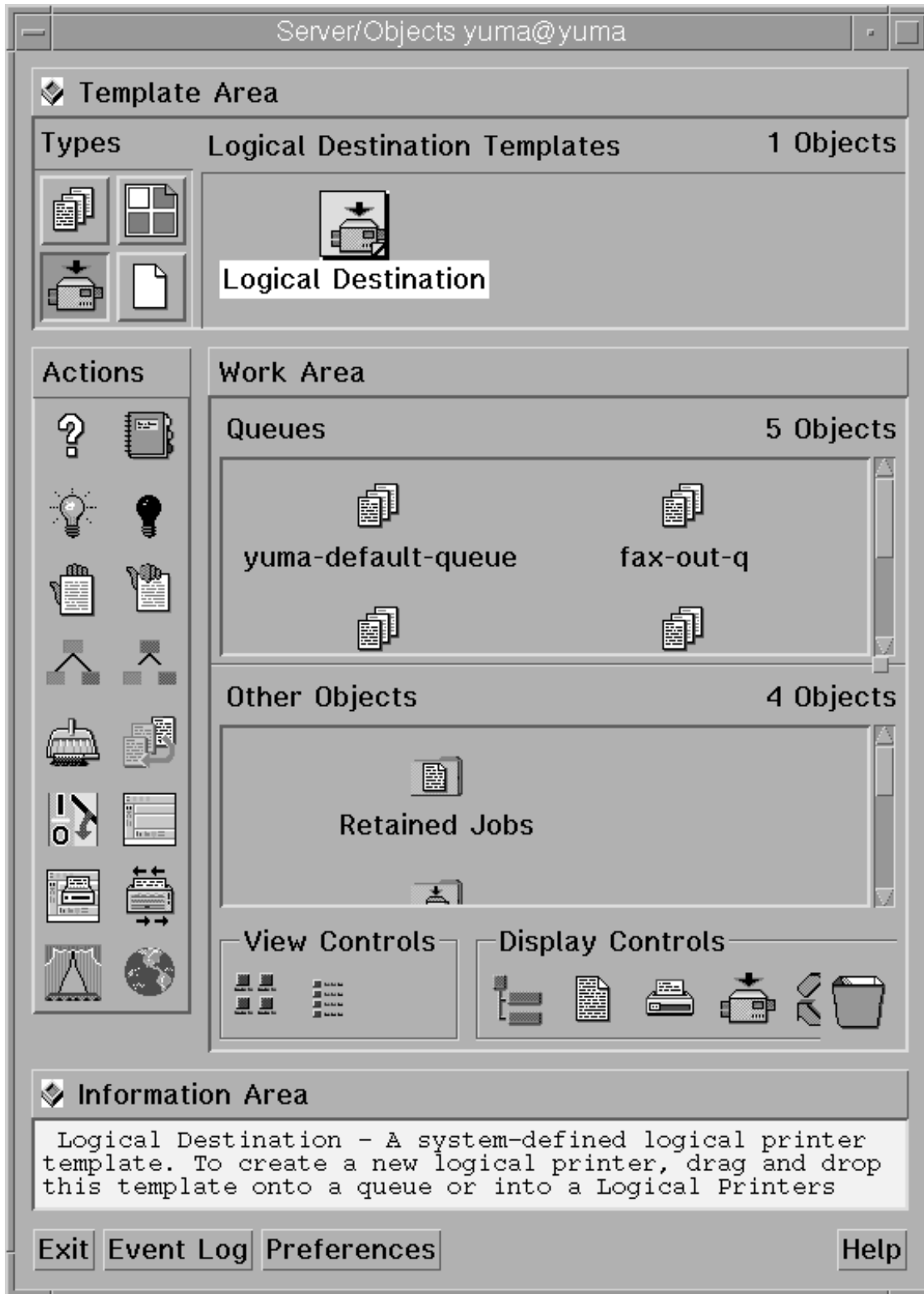


Figure 8. The Server/Objects window.

14. From the **Add Logical Destination** pop-up window, specify a logical destination name in the **Logical destination name** field, such as **fax-out-ld**.

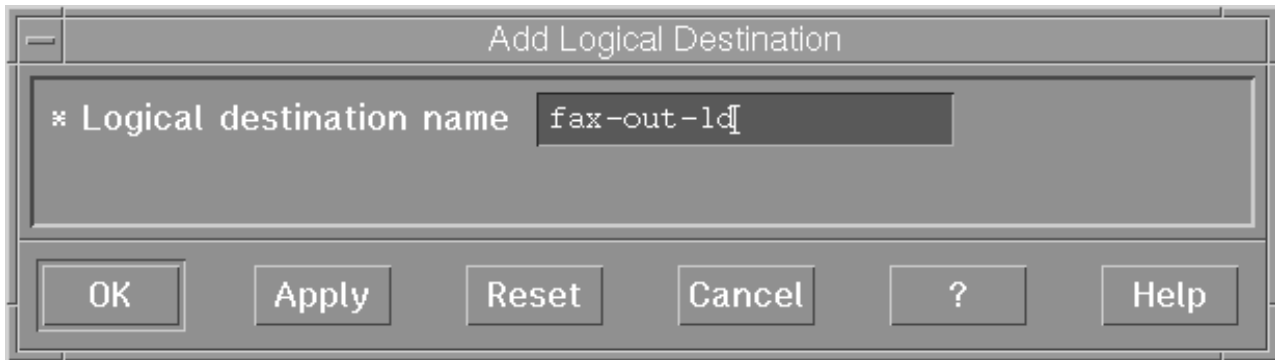


Figure 9. The Add Logical Destination pop-up window.

15. To verify that the logical destination is attached to the print queue, double-click on the **fax-out-q** icon to show the logical destination and the actual destination for the **fax-out-q** queue.
16. To enable this destination, drag the **Enable** icon from the Actions area and drop it on the Fax actual destination that you just created.
17. To enable the logical destination drag the **Enable** icon from the Actions area and drop it on the Fax logical destination that you just created.

---

## Configuring to Fax to A4 Paper

If you want to create fax jobs that will correctly display and print on A4 paper, edit the `/usr/lpp/psf/fax/infifax.cfg` file and specify `fax_height_scale = 2.2`. All jobs sent will print correctly on A4 paper.

---

## Scaling the Width and Height of Fax Output

You can scale a fax document that you are sending to any size that you want. This tool removes pixels from the fax document. To ensure that you do not lose data from your fax job, be sure to specify a value for either parameter that is less than 2.0.

Modify the following two values on the `/usr/lpp/psf/fax/infifax.cfg` file:

### **fax\_height\_scale**

Specifies the number of inches in height that a fax document should be scaled back. For example, if you take the 1.5 inch default value and submit the fax to a page 11 inches long, the output will be scaled to 9.5 inches.

### **fax\_width\_scale**

Specifies the number of inches in width that a fax document should be scaled back. For example, if you take the 0.5 inch default value and submit the fax to a page 8.5 inches wide, the output will be scaled to 8.0 inches.

---

## Specifying Fax Cover Sheets

You can specify two different types of cover sheets with the Infoprint Fax Manager output device:

- Text cover page
- PCL cover page

Infoprint Manager provides one of each kind.

The Infoprint Manager—provided PCL cover page (`/var/psf/faxserver/covers/cover1.pcl`) is the default. The `COVER_PAGE=` parameter in the `infofax.cfg` file that resides in the `/usr/lpp/psf/fax/` directory controls what cover page is used by default. You can change the default on this parameter by editing the `infofax.cfg` file and substituting either the name of the IBM-provided text cover sheet, or a cover page (either text or PCL) that you have created and stored in the fully-qualified path you specify (for example, `COVER_PAGE=/var/psf.faxserver/mycovers/mycover.txt`).

**Note:** If you are using the SAPconnect interface to send faxes with SAP R/3 using Infoprint Manager, these jobs will use the SAP cover page.

When making a PCL header sheet, make sure that your PCL driver outputs non-image PCL data, so that the PCL data has characters and font references. If your PCL driver creates image data, the PCL cover page that you have created will not work with the defined variable names.

```
Date Faxed:      @LFVAR_DATE@
Time Faxed:      @LFVAR_TIME@
Billing Code:    @LFVAR_BILLING_CODE@^M

To:              @LFVAR_DESTINATION_NAME@
Company:         @LFVAR_COMPANY@
Subject:         @LFVAR_SUBJECT@

From:            @LFVAR_CSID@
Callback Phone No: @LFVAR_CALL_BACK_NUMBER@
Commentary:      @LFVAR_COMMENTARY@

                 @LFVAR_USER_DEFINED1@
                 @LFVAR_USER_DEFINED2@
                 @LFVAR_USER_DEFINED3@
                 @LFVAR_USER_DEFINED4@
```

*Figure 10. cover1.pcl File Provided with Infoprint Manager for AIX.*

# Infoprint Fax Manager Fax Cover Page

Date Faxed: 2001/10/15  
Time Faxed: 12:40  
Billing Code: 000000000

To:  
Company: Your company  
Subject: Your report

From: PSD, IBM  
Callback Phone No: 3039244890  
Commentary: Quarterly Report

6300 Diagonal HWY  
Boulder, CO 80526  
Building 8 E8-4  
John Smith

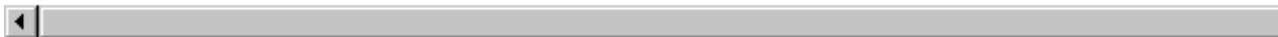


Figure 11. Display of cover1.pcl File Provided with Infoprint Manager for AIX.

August 16, 2002

```
*****  
*                               *  
*   Infoprint Fax Manager     *  
*                               *  
*****
```

---

FROM: @LFVAR\_CSID@  
Callback Phone No: @LFVAR\_CALL\_BACK\_NUMBER@  
Commentary: @LFVAR\_COMMENTARY@

TO: @LFVAR\_DESTINATION\_NAME@  
Company Name: @LFVAR\_COMPANY@  
Subject: @LFVAR\_SUBJECT@

---

Date Faxed: @LFVAR\_DATE@  
Time Faxed: @LFVAR\_TIME@  
Job Number: @LFVAR\_APPLICATION\_NAME@  
Billing Code: @LFVAR\_BILLING\_CODE@

---

@LFVAR\_USER\_DEFINED1@  
@LFVAR\_USER\_DEFINED2@  
@LFVAR\_USER\_DEFINED3@  
@LFVAR\_USER\_DEFINED4@

---

*Figure 12. cover1.txt File Provided with Infoprint Manager for AIX.*

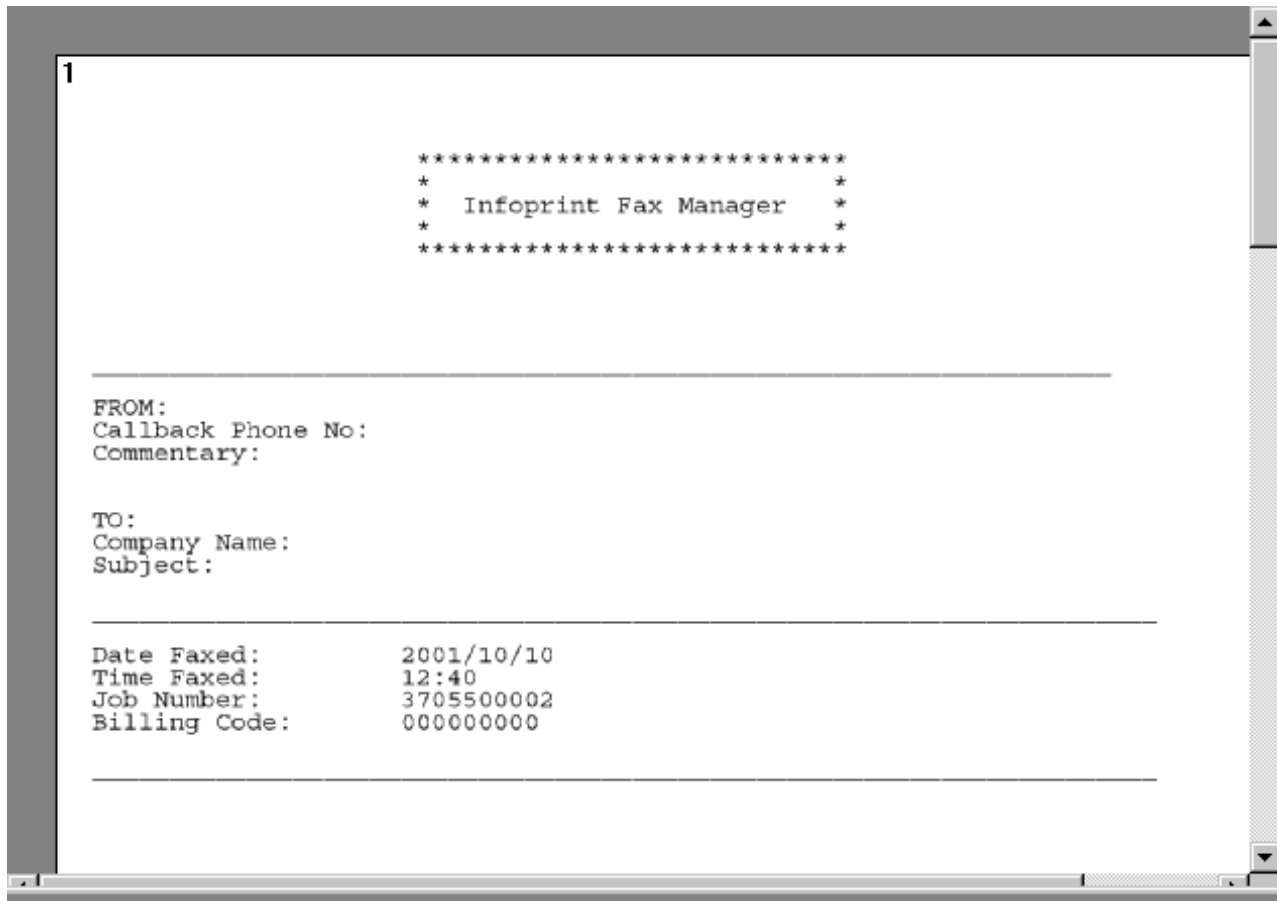


Figure 13. Display of cover1.txt File Provided with Infoprint Manager for AIX.

You can customize your fax header sheets by using the following set of Lightning Fax parameters. Please note that complete definitions of the Infoprint Manager attributes provided in the following table are available from the latest version of the *Infoprint Manager: Reference*, which is available from the Infoprint Manager for AIX 3.2 Product Library page at <http://www.printers.ibm.com/R5PSC.NSF/Web/ipmrefinfo32>.

Configuration Value	Infoprint Manager Value
@LFVAR_APPLICATION_NAME@ Job ID automatically generated from Infoprint Manager.	<b>job-identifier</b>
@LFVAR_BILLING_CODE@ Department code to bill for the fax.	<b>account-text</b>
@LFVAR_CALL_BACK_NUMBER@ Call back telephone number.	<b>callback-number</b>
@LFVAR_COMMENTARY@ Fax document commentary	<b>job-comment</b>
@LFVAR_COMPANY@ Company for which the person to whom you are sending the fax works	<b>destination-company-text</b>

@LFVAR_CSID@ Identity of the person sending the fax.	<b>original-company-text</b>
@LFVAR_DATE@ Date when the fax is sent, which is generated automatically.	n/a
@LFVAR_DESTINATION_NAME@ Person to whom you have addressed the fax	<b>fax-to-name</b>
@LFVAR_FAX_NUMBER@ Telephone number of the fax machine called.	<b>fax-number</b>
@LFVAR_SUBJECT@ Subject of the fax	<b>subject-text</b>
@LFVAR_TIME@ Time when the fax is sent, which is generated automatically.	n/a
@LFVAR_USER_DEFINED1@ User-defined text.	<b>address1-text</b>
@LFVAR_USER_DEFINED2@ User-defined text.	<b>address2-text</b>
@LFVAR_USER_DEFINED3@ User-defined text.	<b>address3-text</b>
@LFVAR_USER_DEFINED4@ User-defined text.	<b>address4-text</b>





## Chapter 3. Submitting Fax Jobs

Once you have installed the Fax option and defined a destination through either the Basic Server or the Advanced Server VSM GUI, you can submit jobs to the fax destination by using either the command-line or the Infoprint Select client.

**Note:** If you have more than one fax line, ensure that you have changed the **maximum-concurrent-jobs** attribute from the default of 4 to 8 (for four lines) or higher. After you make this change, use the **pddisable** and the **pdenable** Commands on the Fax actual destination to ensure that memory has been recycled. Then, you can submit a series of faxes to different numbers and all should be distributed among the various fax channels.

---

### Using the AIX Command Line

Faxes are sent through the **pdpr** command. The following three examples show how you can expand and customize this support. Please note that values that remain unchanged from the more basic examples are not explicitly defined in the later examples.

- “Submitting a Basic Fax Job”
- “Submitting a Fax Job with the Default Cover Sheet Values Specified” on page 20
- “Submitting a Fax Job with a Customized Cover Sheet” on page 20

For specific information about the **pdpr** command and its attributes, refer to the *IBM Infoprint Manager: Reference*, which is provided on the documentation CD-ROM and the Infoprint Manager for AIX 3.2 Product Library page at <http://www.printers.ibm.com/R5PSC.NSF/Web/ipmrefinfo32>.

### Submitting a Basic Fax Job

To submit a basic fax job to the Infoprint Manager fax feature, you can use the following syntax:

```
pdpr -p fax-out-ld -x fax-number=17091234567 faxrpt1
```

where:

**fax-out-ld**

Specifies the Infoprint logical destination that feeds the Infoprint fax actual destination you created in Chapter 2, “Configuring Fax Out (Sending)” on page 5.

**fax-number**

Specifies the document attribute that contains the fax number (1-709-123-4567) to which you are sending the document. Note that this attribute is required for any jobs sent to a fax destination.

Note that for internal site faxes, you may not need to enter a 10-digit number.

**faxrpt1**

Specifies the name of the file that you are faxing.

Note that this can include more than a single file specified in the sequence they should be received. For example, ....memo1 memo2.

## Submitting a Fax Job with the Default Cover Sheet Values Specified

To submit a fax job with the default cover sheet values specified to the Infoprint Manager fax feature, you can use the following syntax:

```
pdpr -p fax-out-ld -x "fax-number=17091234567 -X /fax_scripts/cover/default.attr faxrpt1
```

where:

### **-X /fax\_scripts/cover/default.attr**

Specifies the attribute file that provides values for the default cover sheet.

The **default.attr** attributes file could consist of the following:

```
# Sample Attribute File for Infoprint Manager Fax Option
# = comment
#
account-text = 6400099
#
fax-to-name = "John Swift"
destination-company-text="Your Document Company"
subject-text = "Quarterly Report"
#
original-company-text="My Document Company"
callback-number=3031234567
job-comment="Status Report"
#
address1-text = "My Document Company"
address2-text = "Building 5, office 3"
address3-text = "1234 Main Street"
address4-text = "New London, CN"
```

## Submitting a Fax Job with a Customized Cover Sheet

To submit a fax job with a customized, text coversheet, you must use the following syntax:

```
pdpr -p fax-out-ld -x "fax-number=17091234567" -X /fax_scripts/new.attr \
-x document-type="coversheet" mycover.txt -x document-type="printable" faxrpt1
```

where:

### **-X /fax\_scripts/new.attr**

Specifies the job attributes that you can specify for fax output. These attributes include cover sheet information, billing code information, and other options.

To simplify the printing process, IBM recommends that you create a sample attribute script. In this example, there is a **new.attr** script file that resides in the **/fax\_scripts** directory.

The **new.attr** attributes file could contain the following information:

```
# Sample Attribute File for Infoprint Manager Fax Option
# = comment
#
callback-number=3031234567
account-text = 6400099
fax-to-name = "John Swift"
destination-company-text="Your Document Company"
originating-company-text="My Document Company"
subject-text = "Quarterly Report"
address1-text = "Building 5, office 3"
address2-text = "1234 Main Street"
address3-text = "New London, CN"
job-comment="Status Report"
```

**mycover.txt**

Specifies the names of the customized text cover sheet file (**mycover.txt**). For the location where Infoprint cover sheets are defined and stored, refer to "Specifying Fax Cover Sheets" on page 12.

**faxrpt1**

Specifies the name of the file that you are faxing.

Note that this can include more than a single file specified in the sequence they should be received. For example, ....memo1 memo2.

## Sending ASCII Data through Infoprint Manager Fax Support

To submit ASCII or line data as a fax job through Infoprint Manager, you must create an attribute file and submit it using the following syntax:

```
pdpr -p fax-out-ld -x "fax-number=17091234567" -X /fax_scripts/ascii.attr \  
-x "document-type=coversheet" cover1.txt -x "document-type=printable" faxrpt1
```

Your **ascii.attr** file requires the following **bold-faced** attributes:

```
# Sample Attribute File for Infoprint Manager Fax Option  
# = comment  
#  
callback-number=3031234567  
account-text = 6400099  
fax-to-name = "John Swift"  
destination-company-text="Your Document Company"  
originating-company-text="My Document Company"  
subject-text = "News Summary"  
document-format="line-data"  
input-exit="/usr/lpp/psf/bin/asciipe"  
form-definition="F1A10111"  
page-definition="P1A06462"  
carriage-control-type="none"  
transform-message-file-name="/faxserver/messages/error.log"  
job-comment="Weekly News Summary"
```

**Note:** You should specify the **transform-message-file-name** document attribute to ensure that your installation keeps error messages separately from the fax output.

---

## Using the Infoprint Select Client

Once you have successfully installed Infoprint Select and defined a Fax printer destination, you can use the following procedure to fax.

**Note:** In order to configure the port for the Infoprint server fax destination on your client workstation, the fax logical destination (in our example, **fax-out-ld**) on the Infoprint AIX server must have a value filled in for either the **windows-driver-names** or the **windows-nt-driver-names** logical destination attribute. If one of these values is not filled in, you will not be able to display printers from the Infoprint AIX server when you click the **Refresh Printers Selection List** button (displayed below).

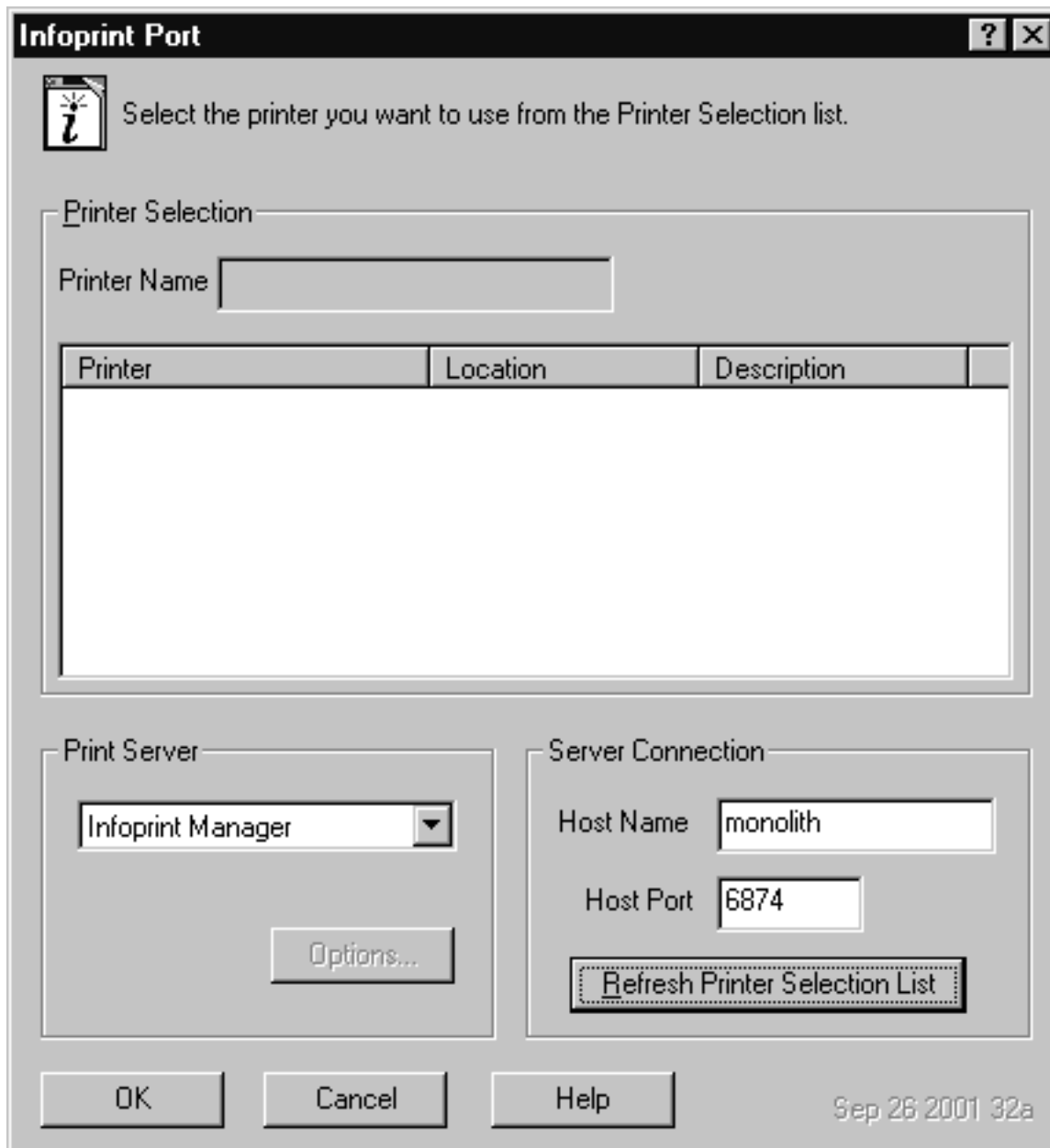
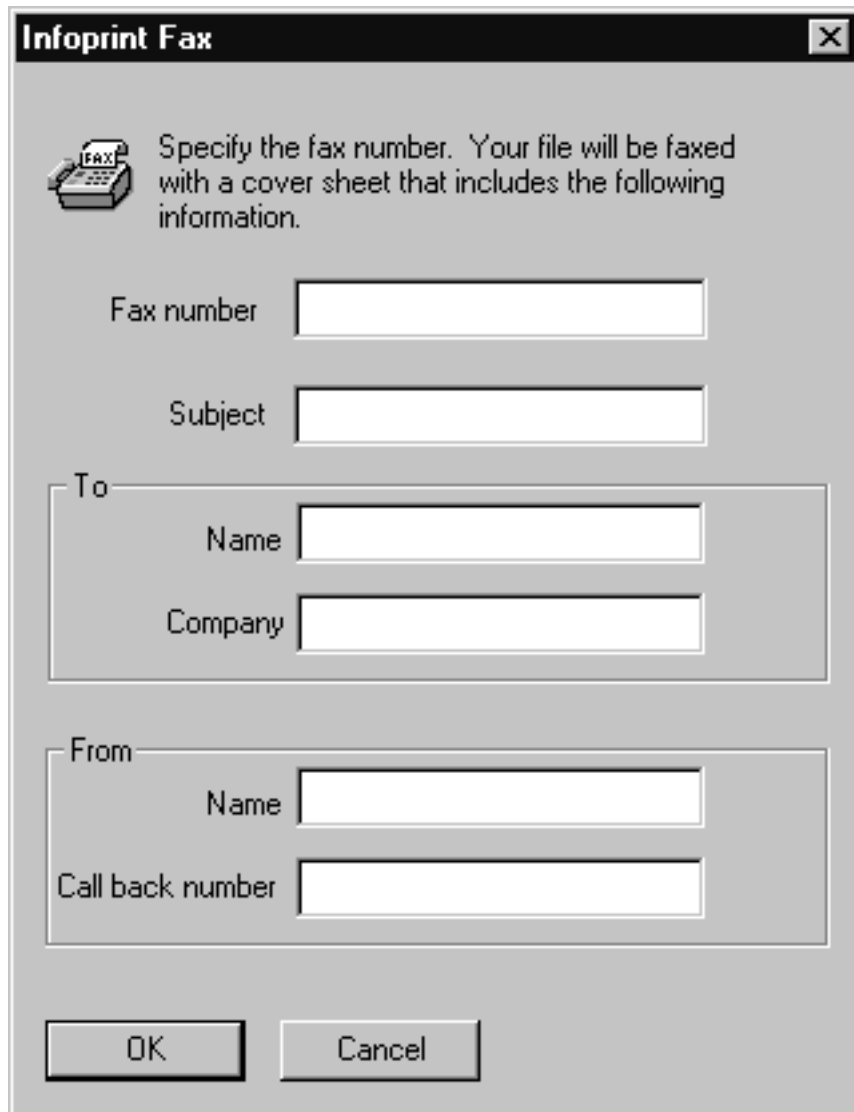


Figure 14. Infoprint Port Window.

1. Specify **Print** from the screen menu.
2. From the **Print** window, ensure that the **Name** field contains the name of the logical destination that you defined to the Infoprint AIX server, then click on the **OK** button.
3. From the **Infoprint Fax** pop-up window (displayed below), specify the attribute information in the fields as indicated.



The image shows a dialog box titled "Infoprint Fax" with a close button (X) in the top right corner. Inside the dialog, there is a small icon of a fax machine on the left. To the right of the icon, the text reads: "Specify the fax number. Your file will be faxed with a cover sheet that includes the following information." Below this text are several input fields: "Fax number" (a single-line text box), "Subject" (a single-line text box), "To" (a group box containing "Name" and "Company" fields), and "From" (a group box containing "Name" and "Call back number" fields). At the bottom of the dialog are two buttons: "OK" and "Cancel".

Figure 15. Infoprint Fax Pop-up Window.

**Note:** You must specify a number for the **Fax number** field, or Infoprint Select cannot submit the job to the server.



## Chapter 4. Configuring Fax In (Receiving)

Fax for input allows you to receive fax input and submit it to one or more Infoprint logical destinations for printing or delivery to a SAP system.

This topic consists of the following topics:

- “Mapping Channel Numbers to Phone Numbers with SMIT”
- “Configuring the Channel Attribute Files for PSF Actual Destinations” on page 26
- “Delivering Incoming Faxes to a SAP System” on page 26
- “Distributing Faxes to Multiple Printers” on page 26

---

### Mapping Channel Numbers to Phone Numbers with SMIT

For receiving fax input, use the System Management Interface Tool (SMIT) to map channel numbers to particular phone numbers, logical destinations, and the type of actual destinations that support these jobs. Note that the actual destination to which you submit incoming faxes must be either a **PSF DSS** or a **sapconnect DSS**.

To configure your Infoprint AIX server to receive incoming faxes, use the following procedure:

1. From an AIX window, type either `smit` or `smitty` and take the following path:

**Infoprint Printing System**—>**Miscellaneous**—>**Configure Fax Input**.

2. From the **Fax channel selector** panel, specify the first channel number you would like to configure (for this example, 1), for the **Enter channel number** field value.

IBM recommends you specify each channel sequentially.

3. From the **ConfigureFax Input** panel, you can specify the values for the following fields:

#### **Incoming Fax Line Phone Number**

Specify a five-to-twelve digit number for this option (the **phone\_number\_1** = parameter in the **procfax.cfg** file).

The number of digits depends upon whether the number is a local extension (five digit) or to a long-distance fax machine (at least ten digit). In our example, we specify the twelve-digit extension:

```
phone_number_1 = 13039999999.
```

#### **Logical Destination**

Specify a logical destination (printer) for (the **logical\_destination\_1** = parameter in the **procfax.cfg** file).

In our example, we select a printer that resides on an Infoprint AIX server named **serv1**: `logical_destination_1 = ip201ab-serv1`.

Note that these logical destinations must already exist on the Infoprint AIX server and be configured to send jobs to a PSF or a sapconnect actual destination.

#### **Fax SAP Connection**

Specify either Yes or No to use this channel for faxes (jobs) to be delivered through the SAPconnect interface to a SAP system.

If you specify Yes, you must also install the SAP Print Feature on your Infoprint AIX server and complete configuration tasks on both that server and on your SAP system, including the creation of a **sapconnect** actual destination. For more information about these tasks, refer to SAP R/3 Support: Configuration and Printing Tasks (**sapr332.pdf**).

4. Once you have finished specifying these values, you can press the **Enter** key and exit SMIT.

Infoprint Manager stores these values in the `/usr/lpp/psf/fax/procfax.cfg` file.

## Configuring the Channel Attribute Files for PSF Actual Destinations

If you are receiving fax jobs and sending them to a **PSF** actual destination instead of a **sapconnect** actual destination (`fax_sapconnect_n = No` in the **procfax.cfg** file), you must perform the following task.

Each fax phone line represents a fax channel, which is controlled by the **Channel00X.att** files. This file serves as the **pdpr** print command and **tiff2afp** data stream transform command configuration file. For each fax channel you must copy a new version of this file, changing the **X** to the appropriate channel number. For example, for your first line (channel 1), the file would be named **Channel001.att**. Edit each copy of the file so the values apply to the appropriate channel number. By configuring a separate attribute file for each channel, you can define sets of attributes for different printers that reside in different departments of your business enterprise.

The most basic example contains only the parameters for the **tiff2afp** transform. To see the meaning of these values, refer to the **tiff2afp** Transform Command in the *Infoprint Manager: Reference*.

```
other-transform-options = "-r600 -alg alg1 -fit scale"
```

You can also use other Infoprint Manager attributes and have them apply to all fax jobs received from this line (channel). Note that a pound sign (#) should precede each comment in the AIX file.

## Delivering Incoming Faxes to a SAP System

If you are using the Fax In support to receive faxes for more than one user on the same SAP System, you should ensure that the faxes for each user's fax line be delivered to the same **sapconnect** actual destination. If you have one logical destination associated with the **sapconnect** actual destination, you can do this by mapping the Incoming Fax Line Phone Numbers to the same logical destination using the SMIT **Configure Fax Input** panel. If you are supporting incoming faxes for users on more than one SAP system, use the same technique to ensure the correct incoming lines are sent to a logical destination which will deliver them to the **SAPconnect** actual destination for the appropriate SAP system.

**Note:** This same technique can be used to send incoming faxes for more than one fax line to the same PSF printer.

## Distributing Faxes to Multiple Printers

You can send the same fax to multiple printers (actual destinations) by repeating the **phone\_number\_n** and the **logical\_destination\_n** parameter pair, where *n* is the number of the fax card line. You can specify the same fax number with a different logical destination (printer) value. For example, you could specify the phone



August 16, 2002

number 1303999999 to provide faxes for both the printer defined in step 3 (logical\_destination\_1 = sapct-serv1) and a second printer defined as logical\_destination\_1 = np24lab-serv1.



## Appendix. Country Code Numbers for Faxing

The following list provides the relevant country codes for the **Channel<sub>n</sub>\_Country=** parameter in the `/etc/lfaixdriver.conf` file. Be sure you set this value correctly for the countries to which you will be sending faxes (fax-out) using the Infoprint fax support. Note that the number in the definition for each country represents the argument for this parameter.

*Table 2. Country Code Fax Numbers.*

Country	Channel <sub>n</sub> _Country value
Albania	0
Algeria	1
American Samoa	2
Andorra	3
Argentina	4
Australia	5
Austria	6
Bahrain	7
Bangladesh	8
Belgium	9
Belize	10
Bolivia	11
Botswana	12
Brazil	13
Brunei	14
Bulgaria	15
Cameroon	16
Canada	17
Chile	18
China	19
Colombia	20
Costa Rica	21
Cuba	22
Cyprus	23
Czechoslovakia	24
Denmark	25
Ecuador	26
Egypt	27
El Salvador	28
Ethiopia	29
Europe	30
Fiji	31

Table 2. Country Code Fax Numbers. (continued)

Finland	32
France Alternative	33
France	34
French Antilles	35
French Guadeloupe	36
French Polynesia	37
Gabon	38
Gabon Alternative	39
Germany	40
Gibraltar	41
Greece	42
Guam	43
Guantanamo Bay	44
Guatemala	45
Haiti	46
Honduras	47
Hong Kong	48
Hungary	50
Iceland	51
India	52
Indonesia	53
Iran	54
Iraq	55
Ireland	56
Israel	57
Italy Alternative	58
Italy	59
Ivory Coast	60
Japan (10pps)	61
Japan (20pps)	62
Jordan	63
Kenya	64
Korea	65
Kuwait	66
Lebanon	67
Lesotho	68
Liberia	69
Libya	70
Liechtenstein	71
Luxembourg	72
Malawi	73

Table 2. Country Code Fax Numbers. (continued)

Malaysia	74
Malta	75
Mexico	76
Monaco	77
Morocco	78
North Korea	79
Namibia	80
Netherlands Alternative	81
Netherlands Antilles Aruba	82
Netherlands Antilles	83
Netherlands	84
New Caledonia	85
New Zealand	86
Nicaragua	87
Nigeria	88
Norway Alternative	89
Norway	90
Oman	91
Pakistan	92
Panama	93
Papua New Guinea	94
Paraguay	95
Peru	96
Philippines	97
Poland	98
Portugal	99
Qatar	100
Romania	101
Russia	102
Saipan	103
San Marino	104
Saudi Arabia	105
Senegal	106
Singapore	107
South Africa	108
Spain	109
SriLanka	110
St Pierre and Miquelon	111
Suriname	112
Swaziland	113
Sweden	114

*Table 2. Country Code Fax Numbers. (continued)*

Switzerland	115
Syria	116
Tanzania	118
Thailand	119
Tunisia	120
Turkey	121
U.S.A.	122
Uganda	123
United Arab Emirates	124
United Kingdom Alternative	125
United Kingdom	126
Uruguay	127
Vatican City	128
Venezuela	129
Vietnam	130
Yemen Arab Republic	131
Yemen	132
Yugoslavia	133
Zambia	134
Zimbabwe	135

## Index

### Special characters

@LFVAR\_APPLICATION\_NAME@ 16  
 @LFVAR\_BILLING\_CODE@ 16  
 @LFVAR\_CALL\_BACK\_NUMBER@ 16  
 @LFVAR\_COMMENTARY@ 16  
 @LFVAR\_COMPANY@ 16  
 @LFVAR\_CSID@ 17  
 @LFVAR\_DATE@ 17  
 @LFVAR\_DESTINATION\_NAME@ 17  
 @LFVAR\_FAX\_NUMBER@ 17  
 @LFVAR\_SUBJECT@ 17  
 @LFVAR\_TIME@ 17  
 @LFVAR\_USER\_DEFINED1@ 17  
 @LFVAR\_USER\_DEFINED2@ 17  
 @LFVAR\_USER\_DEFINED3@ 17  
 @LFVAR\_USER\_DEFINED4@ 17

### A

A4 paper 12  
 account-text 16  
 address1-text 17  
 address2-text 17  
 address3-text 17  
 address4-text 17  
 AIX command line, using for fax 19  
 Albania country code 29  
 Algeria country code 29  
 American Samoa country code 29  
 Andorra country code 29  
 Argentina country code 29  
 Australia country code 29  
 Austria country code 29

### B

Bahrain country code 29  
 Bangladesh country code 29  
 Belgium country code 29  
 Belize country code 29  
 Bolivia country code 29  
 Botswana country code 29  
 Brazil country code 29  
 Brunei country code 29  
 Bulgaria country code 29

### C

callback-number 16  
 Cameroon country code 29  
 Canada country code 29  
 channel attribute files, configuring 26  
 Chile country code 29  
 China country code 29  
 Colombia country code 29  
 configure  
     for incoming fax 25  
 configuring channel attribute files 26  
 configuring fax out (sending) 5

configuring incoming fax 25  
 configuring to fax to A4 paper 12  
 Costa Rica country code 29  
 cover page, PCL sample display 13  
 cover page, PCL sample file 13  
 cover page, text sample display 15  
 cover page, text sample file 14  
 create a fax or email destination, advanced VSM 7  
 create a fax or email destination, basic VSM 5  
 Cuba country code 29  
 customizing fax header sheets 16  
 customizing incoming fax cover sheets 26  
 Cyprus country code 29  
 Czechoslovakia country code 29

### D

delivering incoming faxes to SAP R/3 26  
 Denmark country code 29  
 destination-company-text 16  
 directories  
     /etc 2  
     /usr/lpp/psf/fax 26  
     usr/lpp/lightningfax/lfaixserver 1  
     var/psf/faxserver/covers 13  
 distributing faxes to multiple printers 26

### E

Ecuador country code 29  
 Egypt country code 29  
 El Salvador country code 29  
 Ethiopia country code 29  
 Europe country code 29

### F

fax boards, obtaining  
     [http://www.intel.com/network/csp/products/fax\\_index.htm](http://www.intel.com/network/csp/products/fax_index.htm) 1  
 Fax SAP Connection SMIT parameter 25  
 fax\_height\_scale parameter  
     defined 12  
     using A4 paper 12  
 fax\_width\_scale parameter  
     defined 12  
 fax-in procedures  
     configuring channel attribute files 26  
     delivering to a SAP system 26  
     distributing faxes to multiple printers 26  
 fax-number 17  
 fax-to-name 17  
 Fiji country code 29  
 files  
     /etc/lfaixapi.conf 2  
     /etc/lfaixapifbk.conf 2  
     /etc/lfaixdriver.conf 2  
     /etc/lfaixserver.conf 2  
     /tmp/FaxConfFiles 2  
     /usr/lpp/psf/fax/infifax.cfg 12  
     /usr/lpp/psf/fax/procfax.cfg 25, 26

files (*continued*)

/usr/lpppsf/fax/infifax.cfg 2  
 Channel00X.att 26  
 LFlic.txt 1  
 procfax.cfg 26  
 Finland country code 30  
 France Alternative country code 30  
 France country code 30  
 French Antilles country code 30  
 French Guadeloupe country code 30  
 French Polynesia country code 30

**G**

Gabon Alternative country code 30  
 Gabon country code 30  
 Germany country code 30  
 Gibraltar country code 30  
 Greece country code 30  
 Guam country code 30  
 Guantanamo Bay country code 30  
 Guatemala country code 30

**H**

Haiti country code 30  
 Honduras country code 30  
 Hong Kong country code 30  
[http://www.intel.com/network/csp/products/fax\\_index.htm](http://www.intel.com/network/csp/products/fax_index.htm)  
 obtaining fax boards 1  
 Hungary country code 30

**I**

Iceland country code 30  
 incoming fax  
   configuring 25  
 India country code 30  
 Indonesia country code 30  
 Infoprint attributes for job submission  
   maximum-concurrent-jobs 19  
 Infoprint cover sheet attributes  
   account-text 16  
   address1-text 17  
   address2-text 17  
   address3-text 17  
   address4-text 17  
   callback-number 16  
   destination-company-text 16  
   fax-number 17  
   fax-to-name 17  
   job-comment 16  
   job-identifier 16  
   original-company-text 17  
   subject-text 17  
 Iran country code 30  
 Iraq country code 30  
 Ireland country code 30  
 Israel country code 30  
 Italy Alternative country code 30  
 Italy country code 30  
 Ivory Coast country code 30

**J**

Japan (10pps) country code 30  
 Japan (20pps) country code 30  
 job submission attributes  
   maximum-concurrent-jobs attribute 19  
 job-comment 16  
 job-identifier 16  
 Jordan country code 30

**K**

Kenya country code 30  
 Korea country code 30  
 Kuwait country code 30

**L**

Lebanon country code 30  
 Lesotho country code 30  
 Liberia country code 30  
 Libya country code 30  
 Liechtenstein country code 30  
 LightningFax cover sheet maros  
   @LFVAR\_APPLICATION\_NAME@ 16  
   @LFVAR BILLING\_CODE@ 16  
   @LFVAR\_CALL\_BACK\_NUMBER@ 16  
   @LFVAR\_COMMENTARY@ 16  
   @LFVAR\_COMPANY@ 16  
   @LFVAR\_CSID@ 17  
   @LFVAR\_DATE@ 17  
   @LFVAR\_DESTINATION\_NAME@ 17  
   @LFVAR\_FAX\_NUMBER@ 17  
   @LFVAR\_SUBJECT@ 17  
   @LFVAR\_TIME@ 17  
   @LFVAR\_USER\_DEFINED1@ 17  
   @LFVAR\_USER\_DEFINED2@ 17  
   @LFVAR\_USER\_DEFINED3@ 17  
   @LFVAR\_USER\_DEFINED4@ 17  
 logical destination SMIT parameter 25  
 Luxembourg country code 30

**M**

Malawi country code 30  
 Malaysia country code 31  
 Malta country code 31  
 mapping channel numbers to phone numbers 25  
 mapping channel numbers to phone numbers, SMIT  
   parameters  
     Fax SAP Connection 25  
     logical destination 25  
 maximum-concurrent-jobs attribute 19  
 Mexico country code 31  
 Monaco country code 31  
 Morocco country code 31  
 multiple printers, distributing to 26

**N**

Namibia country code 31  
 Netherlands Alternative country code 31  
 Netherlands Antilles Aruba country code 31  
 Netherlands Antilles country code 31  
 Netherlands country code 31  
 New Caledonia country code 31



August 16, 2002

New Zealand country code 31  
Nicaragua country code 31  
Nigeria country code 31  
North Korea country code 31  
Norway Alternative country code 31  
Norway country code 31

## O

obtaining fax boards  
[http://www.intel.com/network/csp/products/fax\\_index.htm](http://www.intel.com/network/csp/products/fax_index.htm) 1  
Oman country code 31  
original-company-text 17

## P

Pakistan country code 31  
Panama country code 31  
Papua New Guinea country code 31  
Paraguay country code 31  
Peru country code 31  
Philippines country code 31  
Poland country code 31  
Portugal country code 31

## Q

Qatar country code 31

## R

Romania country code 31  
Russia country code 31

## S

Saipan country code 31  
San Marino country code 31  
Saudi Arabia country code 31  
scaling the width and height of fax output 12  
Senegal country code 31  
Singapore country code 31  
South Africa country code 31  
Spain country code 31  
specifying fax cover sheets 12  
specifying more than one printer for the same fax number 26  
SriLanka country code 31  
St Pierre and Miqueloni country code 31  
subject-text 17  
submitting fax jobs 19

Suriname country code 31  
Swaziland country code 31  
Sweden country code 31  
Switzerland country code 32  
Syria country code 32

## T

Tanzania country code 32  
Thailand country code 32  
Tunisia country code 32  
Turkey country code 32

## U

U.S.A. country code 32  
Uganda country code 32  
United Arab Emirates country code 32  
United Kingdom Alternative 32  
United Kingdom country code 32  
updating the fax feature when Lightning Fax 6.5 is already installed 3  
Uruguay country code 32  
using A4 paper 12  
using infoprint fax 1  
using the Infoprint Select client 21

## V

Vatican country code 32  
Venezuela country code 32  
Vietnam country code 32

## W

world wide web address  
[http://www.intel.com/network/csp/products/fax\\_index.htm](http://www.intel.com/network/csp/products/fax_index.htm) 1

## Y

Yemen Arab Republic country code 32  
Yemen country code 32  
Yugoslavia country code 32

## Z

Zambia country code 32  
Zimbabwe country code 32