



Configuring and Using Infoprint Email

Figures

1. The Print/Server Infoprint Manager category.	2	8. Queue Template Type from the Servers window.	11
2. The Foreign SMTP Domain and Global Domain categories.	4	9. The Add Queue pop-up window.	12
3. A Print Server/Infoprint Manager document.	6	10. Actual Destination Template Type pane.	13
4. The Actual Destination Templates pane.	8	11. The Email icon.	14
5. The Email icon.	9	12. Add E-Mail Destination window.	14
6. Select a Target Object window.	9	13. The Server/Objects window.	15
7. Add E-Mail Destination window.	10	14. The Add Logical Destination pop-up window.	16

Contents

Figures iii

Chapter 1. Configuring Email 1

Configuring the Lotus Notes Server 1
 Accessing the Lotus Notes Interface 1
 Configuring the Connections View 2
 Configuring the Domains View 3
 Configuring the Servers View. 5
 Exiting the Lotus Notes Interface 7
Creating an Infoprint Email Destination 7
 Using the VSM Basic Server Interface to Create the
 Email Actual Destination 7
 Using the VSM Advanced Server Interface to
 Create the Email Actual Destination 10

Chapter 2. Submitting Email Jobs 17

Example 1: Submitting Attributes through a File
with the -Z Option 17
Example 2: Submitting Files with a Korn Shell Script 18
Example 3: Submitting Text Files with a Korn Shell
Script 19
Printing Color Email 20
 Document Attributes Not Supported for Color
 Email: 20
 Job Attribute Conditions Not Supported for
 Color Email: 21

Index 23

Chapter 1. Configuring Email

Once Email has been installed, you can verify that you have all the necessary executables required to run the Email feature and configure the Lotus Notes server in your Infoprint AIX server to send email.

Note that if you plan to use Email to send large PDF files consisting of fifty pages or more, you will need to expand the size of the `/var/psf/segments` file system to 500 MB.

Configuring the Lotus Notes Server

You must use the following procedure to configure the Simple Message Transfer Protocol (SMTP) MTA for sending mail beyond your Infoprint AIX server.

Accessing the Lotus Notes Interface

From an AIX window, use the following procedure to access the Lotus Notes interface so you can configure the mail server:

1. From the AIX command line, type:
 `. /opt/lotus/scripts/domino_env`

This procedure exports the path necessary to display the Lotus Notes server configuration window. Note that the dot (.) that precedes the first forward slash (/) must be separated from that slash by at least one space and is necessary to ensure that the current shell is set by this script.

Note: This step must be repeated any time you modify your Lotus Notes server configuration.

2. From an AIX command line, move to the correct directory by typing `cd /notesr4`.
3. Open the Lotus Notes interface by typing the following at the AIX command line: `notes`.

You can ignore the following message, should it display:

Warning: The operating system version is newer than expected. The OS minor revision 3 is greater than the expected revision 2.

4. From the **Lotus Notes - Workspace at PrintServer** window, double-click on the **Infoprint Manager's Address Book** (an open book) icon.

From the **Lotus Notes - InfoPrint Manager's Address Book - Server**`x` window, (where `x` defaults to the last field viewed, such as **Servers**, **Domains**, or any other likely option) you will see a number of views in the left column. To configure the Lotus Notes server, you will be opening each of these views that display under the **Server** view to either make a few changes or ensure that they have the correct settings:

- “Configuring the Connections View” on page 2.
- “Configuring the Domains View” on page 3.
- “Configuring the Servers View” on page 5.

Configuring the Connections View

This record is used during the transfer of mail from your SMTP mailbox to the Internet. To complete this procedure, you will need the following Infoprint Manager information:

- the fully-qualified name of the email server used at your installation.
 1. In the **Lotus Notes - Infoprint Manager's Address Book**. Select the **Connections** view under the **Server** view.

This action changes the right side of the screen to show a **PrintServer/Infoprint Manager** category that consists of a default document (**Type** is SMTP) and a default **Local Network** document (**Type** is Local Network), as shown below:

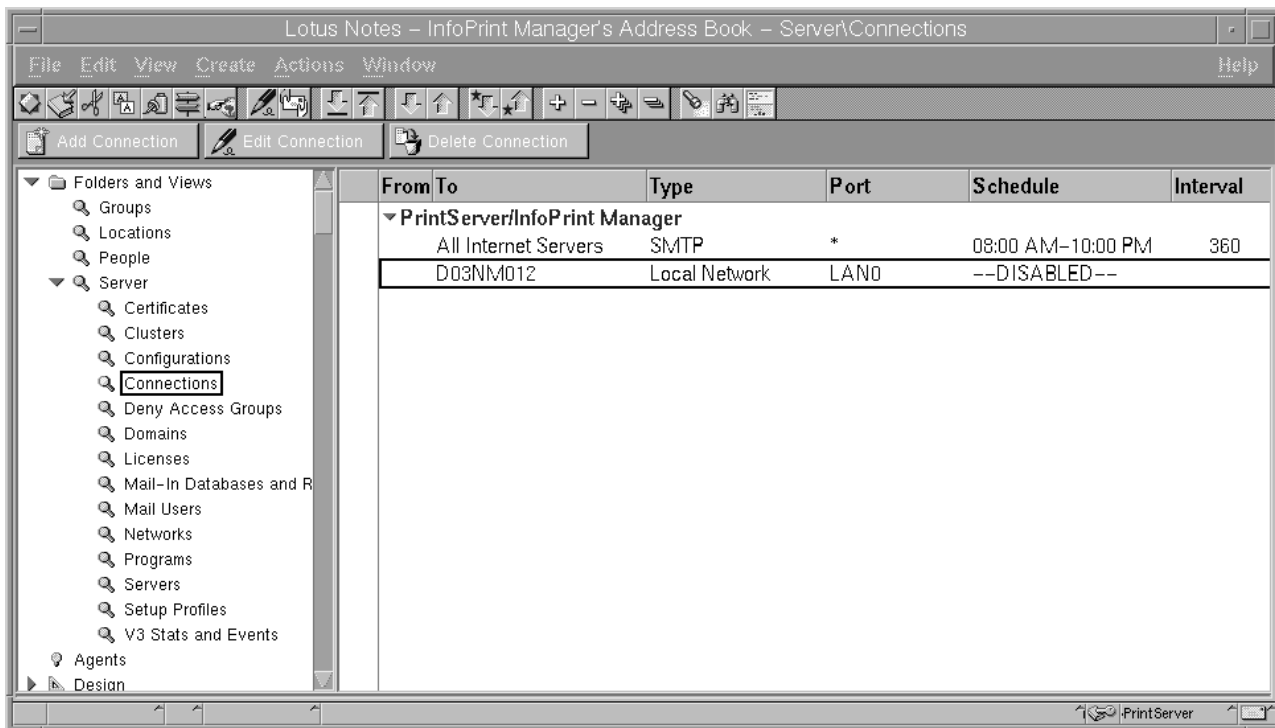


Figure 1. The Print/Server Infoprint Manager category.

2. Double-click on the SMTP document.
3. Fill in the following values. Note that these values must be specified exactly as shown below, unless otherwise indicated. If you need to change these values, you must click the **Edit Connections** button.

Note: The values for the Source Server and Source Domain fields are not case sensitive.

Field	Value
Connection type	SMTP
Source server	PrintServer/Infoprint Manager
Source domain	Infoprint Manager

Destination server	All internet servers Specifies the mail server name. This is a text field that can be used for descriptive purposes.
Destination domain	TheInternet
Connection	ENABLED
Optional network address	<i>smtpDNSServername</i> where <i>smtpDNSServername</i> indicates fully-qualified name of the email server used at your installation, such as relay.us.ibm.com. Note that you must define this field to send email outside your company.

4. Once you have specified these values, save and close the file before returning to the **Lotus Notes - Infoprint Manager's Address Book - Server/Connections** window.

Note: You can ignore the warning that appears in a Lotus Notes pop-up dialog about a print server certificate that has expired: the values are saved.

5. Double-click on the default **Local Network** document.
6. From the **SERVER CONNECTION:PrintServer/Infoprint Manager to deflocnet** window, where *deflocnet* is the name of the default Local Network:
 - Ensure that the **Schedule:** value in the **Scheduled Connection** section is *DISABLED*.
 - Change the **Destination Server** value from the D03NM012 default value to the name of your company email server.
7. Once you have specified these values, save and close the file before returning to the **Lotus Notes - Infoprint Manager's Address Book - Server/Connections** window.
8. Now you are ready to configure the Domains view.

Configuring the Domains View

1. Access the **Lotus Notes - Infoprint Manager's Address Book**. Select the **Server** view, and then select the **Domains** view.

This action changes the right side of the screen to show a **Foreign SMTP Domain** category and a **Global Domain** category, as shown below:

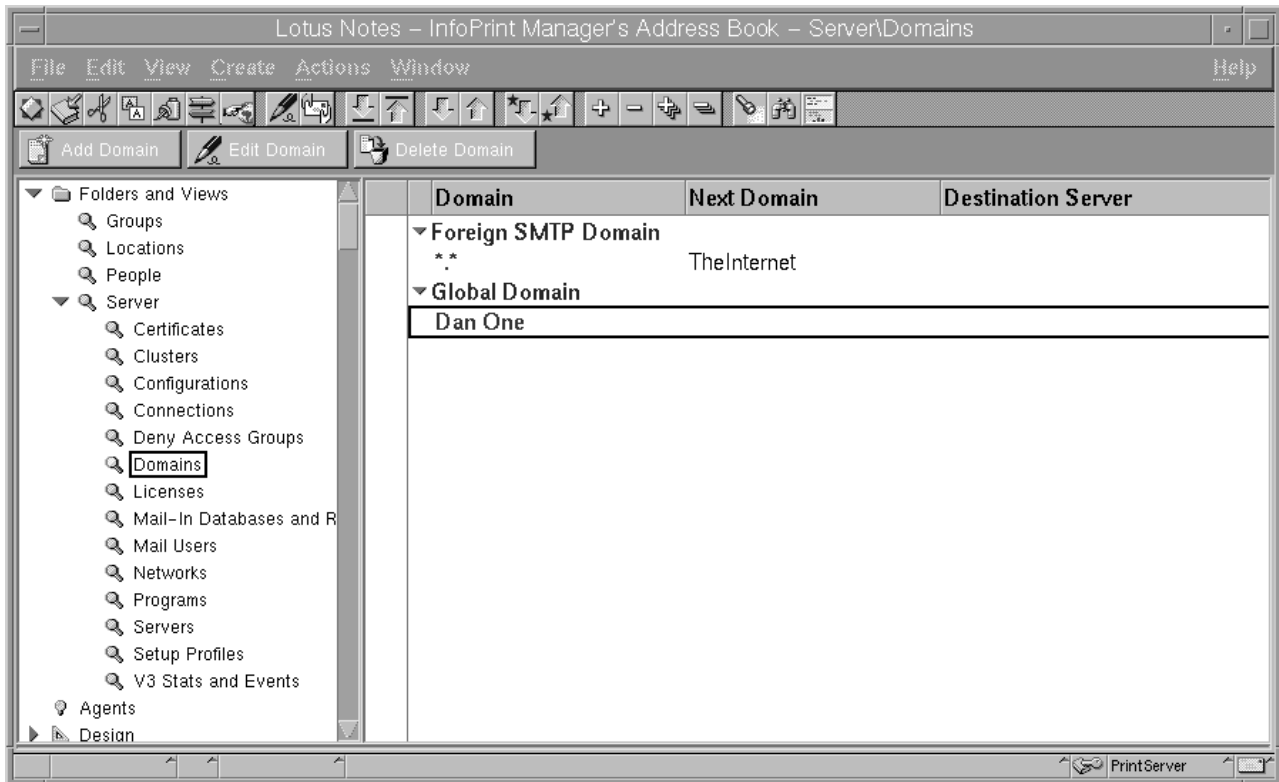


Figure 2. The Foreign SMTP Domain and Global Domain categories.

2. Double-click on the document within the **Foreign SMTP Domain** category that has **TheInternet** specified in the **NextDomain** column.
3. Fill in the following values. Note that these values must be specified exactly as shown below, unless otherwise indicated. If you need to change these values, you must click the **Edit Domain** button.

Field	Value
Domain type	Foreign SMTP Domain
Domain name	TheInternet

4. Once you have specified these values, save and close the file before returning to the **Lotus Notes - Infoprint Manager's Address Book - Server/Domains** window.
5. Double-click on the **DAN ONE Domain** document.
6. Fill in the following values. Note that these values must be specified exactly as shown below.

Field	Value
Domain type	Global Domain
Global Domain name	Dan One
Global Domain role	SMTP MTA

7. Once you have specified these values, save and close the file before returning to the **Lotus Notes - Infoprint Manager's Address Book - Server/Domains** window.
8. Now you are ready to configure the Servers view.

Configuring the Servers View

1. From the **Lotus Notes - Infoprint Manager's Address Book - Server/Servers** window, click on the **Servers** file that is listed under the **Server** folder on the left side of the screen. To complete this procedure, you will need the following Infoprint Manager information: the fully-qualified name of this Infoprint AIX server.

This action changes the right side of the screen to show an **Infoprint Manager** document, which contains a **PrintServer/Infoprint Manager** document, as shown below:

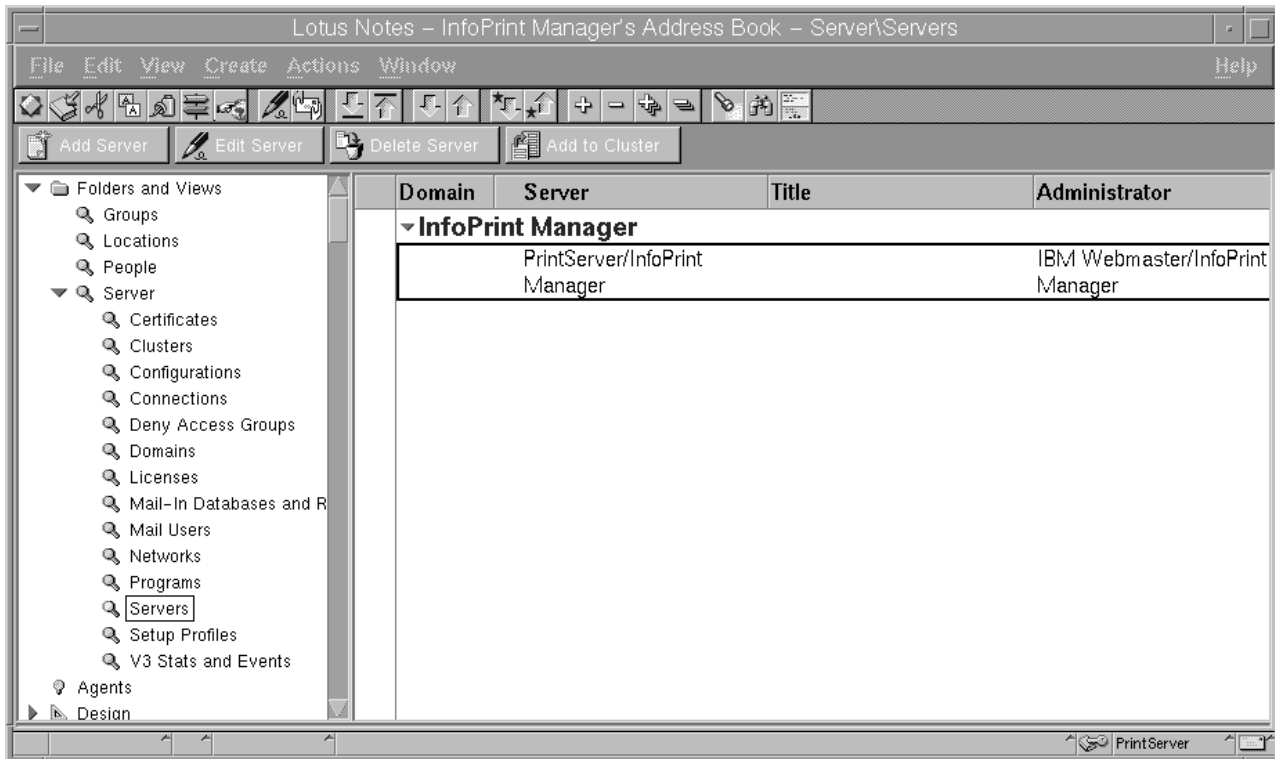


Figure 3. A Print Server/Infoprint Manager document.

2. From the **Lotus Notes - Infoprint Manager's Address Book - Server/Servers** window, click on the **PrintServer/Infoprint Manager** document.
3. Fill in the following values. Note that these values must be specified exactly as shown below, unless otherwise indicated. If you need to change these values, you must click the **Edit Server** button.

Field	Value
Server name	PrintServer/Infoprint Manager
Domain name	Infoprint Manager

4. Open the **Network Configuration** link and ensure that you have specified the following on the first line:

Port	Notes Network	Net Address	Enable
LAN0	TCP/IP	The fully-qualified host name of the Infoprint AIX host server where this Lotus Notes server resides.	ENABLE

- Use the twisty arrow to open the **Internet Message Transfer Agent (SMTP MTA)** section so you can verify that the following values have been specified under the **General** topic:

Field	Value
Global domain name	Dan One
Fully qualified Internet host name	<i>servername</i> where <i>servername</i> is the fully-qualified name of this Infoprint AIX server, such as <i>iris.penn.boulder.ibm.com</i> . To find this value, specify ping hostname from an AIX command line.
Message typeface	Specify the font of choice to replace the Courier default, such as Times Roman.
Message point size	Specify the point size for the messages you send, such as either 10 or 12.
Message Content	Users without Lotus Notes Specify Users without Lotus Notes to ensure that your Email does not attach a second file named encap2.ond with each submission.

- Once you have specified these values, save and close the file before returning to the **Lotus Notes - Infoprint Manager's Address Book - Server/Servers** window
- Now you are ready to exit the Lotus Notes Interface.

Exiting the Lotus Notes Interface

Once you have verified that all three views have been properly configured, do the following before attempting to use the Infoprint Manager Email feature:

- Close all Lotus Notes windows.
- Once you have completed configuring and saving these three records, you must create an Email destination on the Infoprint AIX server, through either the "Using the VSM Basic Server Interface to Create the Email Actual Destination" or the "Using the VSM Advanced Server Interface to Create the Email Actual Destination" on page 10.

Creating an Infoprint Email Destination

Before you can send email output through Infoprint Manager, you must create an email destination on your Infoprint AIX server. Please note that you can use either the Basic or the Advanced Server VSM graphical user interface (GUI) to perform this task. If you use the Advanced VSM GUI, you must perform additional steps to define both a print queue and a logical destination for the email jobs.

Note: You cannot display the Email destination in either the **Infoprint Manager Administration GUI** or the **Infoprint Manager Operations GUI**.

Using the VSM Basic Server Interface to Create the Email Actual Destination

- From an AIX command line on your Infoprint AIX server, you can access the **Servers** window by typing: `admingui`.

- From the **Infoprint Administration** window, go to the **Template Area** and select the **Actual Destination Template** icon. This icon is in the first column of the second row (The **Information Area** field lists this as a Physical Printer Template Type). This step opens the **Actual Destination Templates** pane.

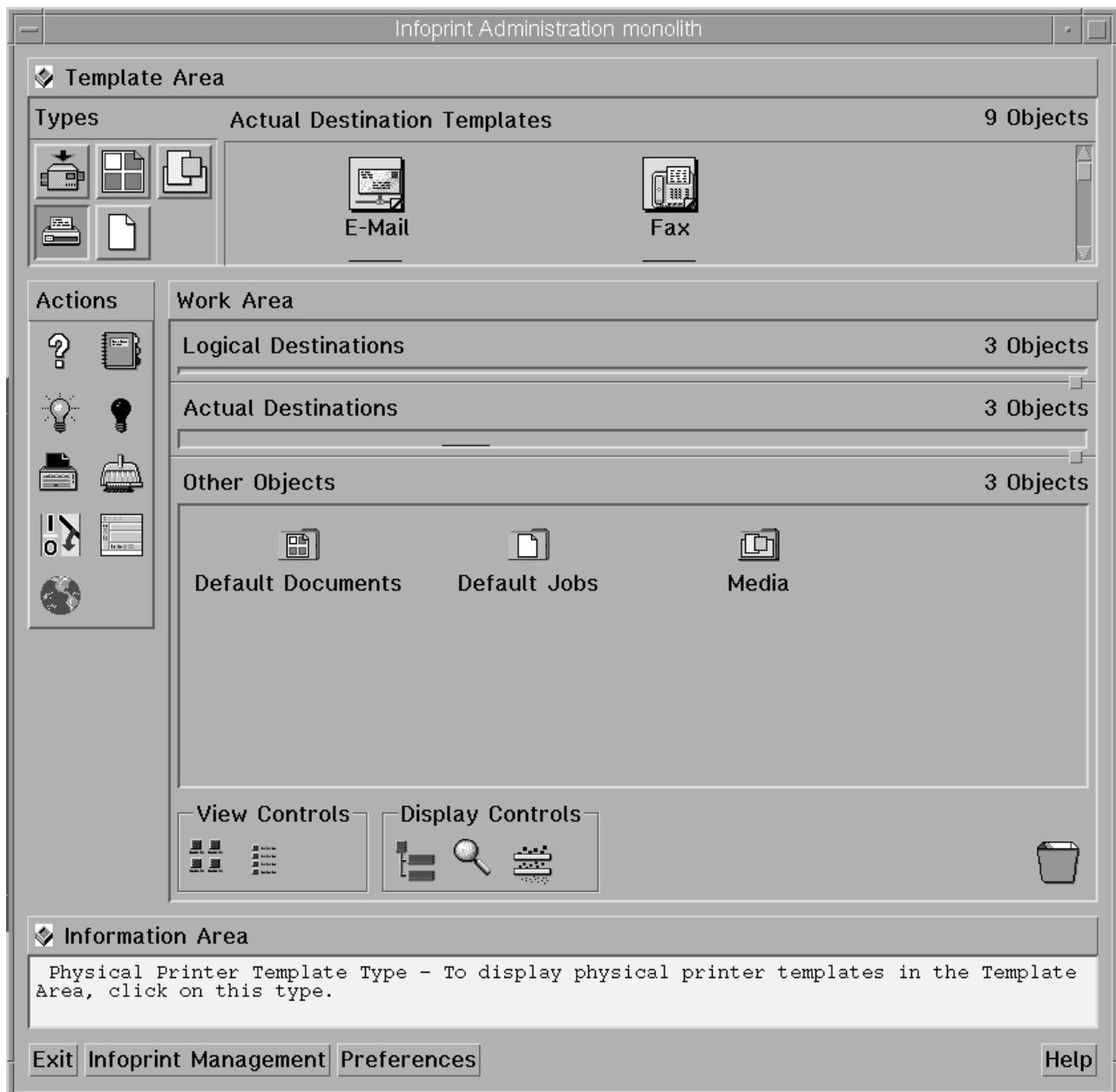


Figure 4. The Actual Destination Templates pane.

- From the **Infoprint Administration** window, go to the bottom of the window and click on the **Preferences** button.
This step opens the **User Preferences** pop-up window.
If there is already an email template in the set of templates, go to step 5. If an email template does not exist, continue with step 4.
- From the **User Preferences** pop-up window, click on the **List** button to the right of the **Display actual destination templates** field.
This step opens the **Template selection** pop-up menu.

- From the **Template selection** pop-up menu, click on the Email name. This step puts the **Email** template inside the **Actual Destination Templates** pane.
- From the **Actual Destination Templates** pane, select the **Email** icon, and use the middle button of your mouse to drag it into the **Actual Destinations** pane.



Figure 5. The Email icon.

- From the **Select a Target Object** pop-up window (displayed below), select the name of the AIX server where you want this destination to reside.

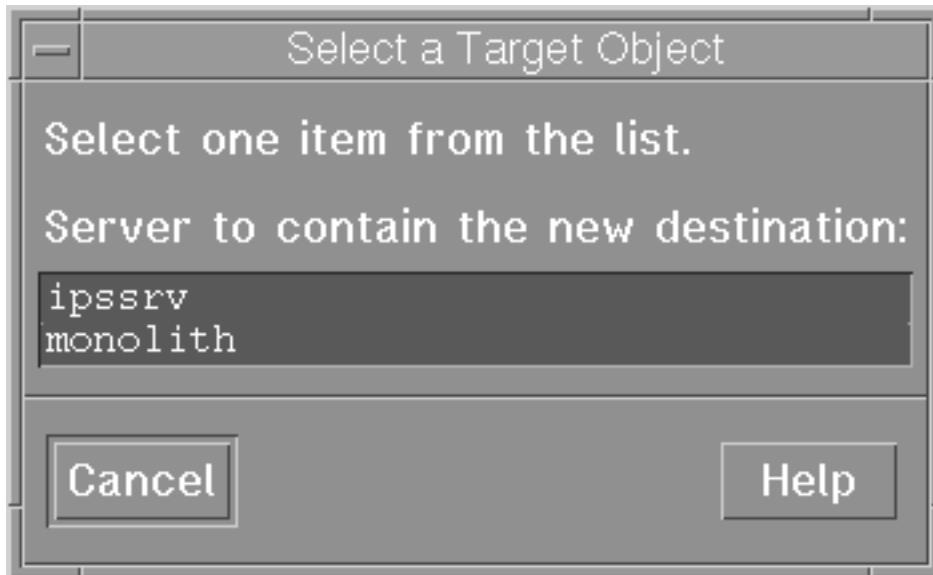


Figure 6. Select a Target Object window.

- Note that this window appears only when you have more than one server.
- From the **Add E—Mail Destination** pop-up window (displayed below), choose a name for your destination. This name should be no more than eight characters long.

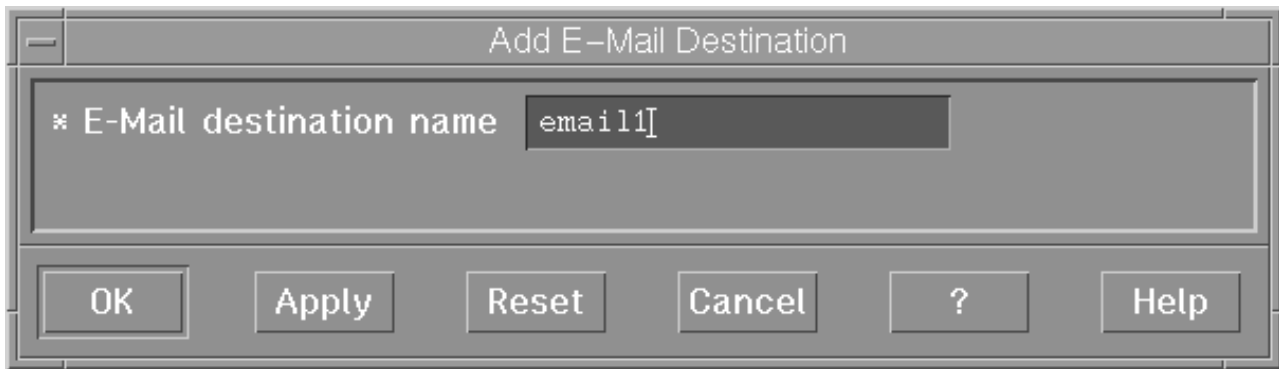


Figure 7. Add E-Mail Destination window.

Once you choose a name for the destination (such as **email1**, an icon with that name appears in the **Actual Destinations** area. In addition Infoprint Manager creates a logical destination in the Logical Destinations pane with a similar name (such as **email1-server**, where **server** is the name of your AIX Infoprint server).

Note: You cannot create more than one email destination for each server. If you attempt to do so, the system responds with a message and does not allow you to proceed.

9. To enable this destination, drag the **Enable** icon from the Actions area and drop it on the Email actual destination that you just created.
10. To enable the logical destination, drag the **Enable** icon from the Actions area and drop it on the Email logical destination that you just created.
11. Shut down and reboot the Infoprint AIX server (which will start the resident Lotus Notes server) before you can begin “Chapter 2. Submitting Email Jobs” on page 17.
12. Once you have rebooted the Infoprint AIX server, verify that the Lotus Notes server has started by specifying the following from an AIX command line: `ps -ef | grep server`.

If the command response does not show the Lotus Notes daemon as active (returning a display with `/opt/lotus/notes/latest/ibmpow/server`), you must start the Lotus Notes server from the command line by specifying the following from an AIX command line: `/notesr4/scripts/startup`.

Using the VSM Advanced Server Interface to Create the Email Actual Destination

1. From an AIX command line on your Infoprint AIX server, you can access the **Servers** window by typing: `pdadmin`.
2. From the **Servers** window, click on the **Queue Template Type** button that resides in the Types area.

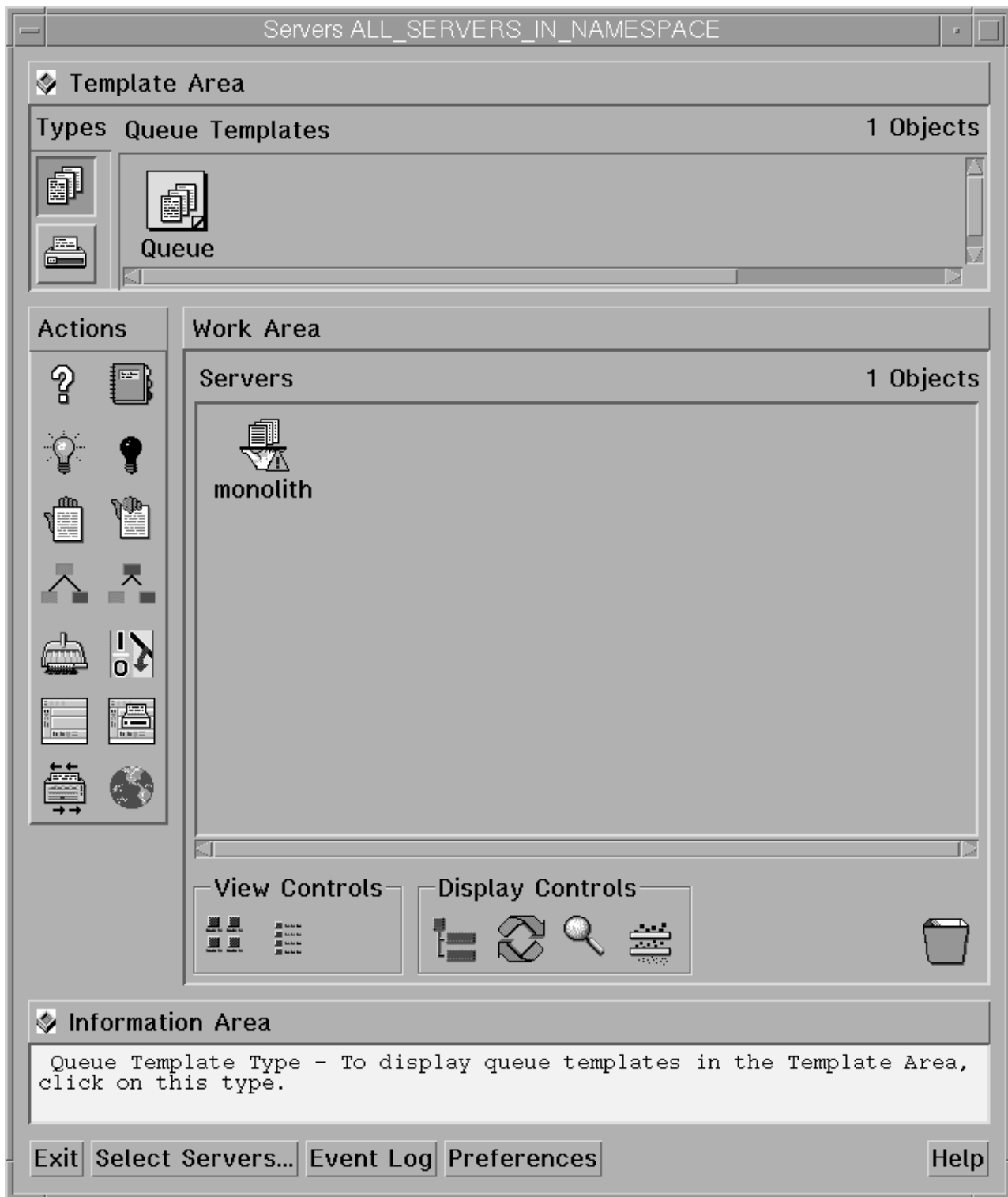


Figure 8. Queue Template Type from the Servers window.

3. Drag the system-defined **Queue Template** icon from the Queue Templates pane onto the **server** icon that resides in the Servers pane of the Work Area.

4. From the Add Queue pop-up window, specify a queue name in the **Queue name** field, such as **emailq**. This step creates the print queue that connects the Logical Destination to the Actual Destination.

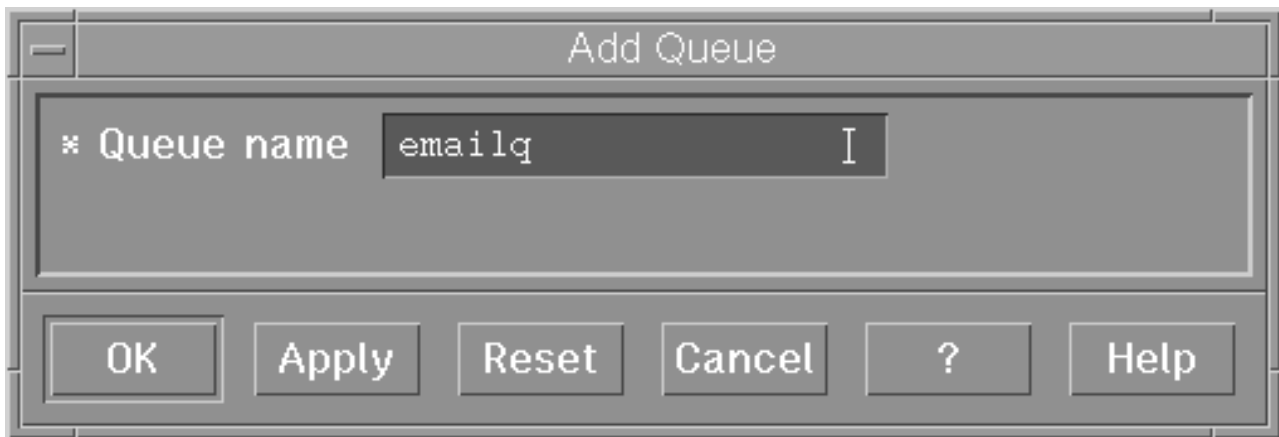


Figure 9. The Add Queue pop-up window.

5. From the **Servers** window, click on the **Actual Destination Template Type** button that resides in the Types area.

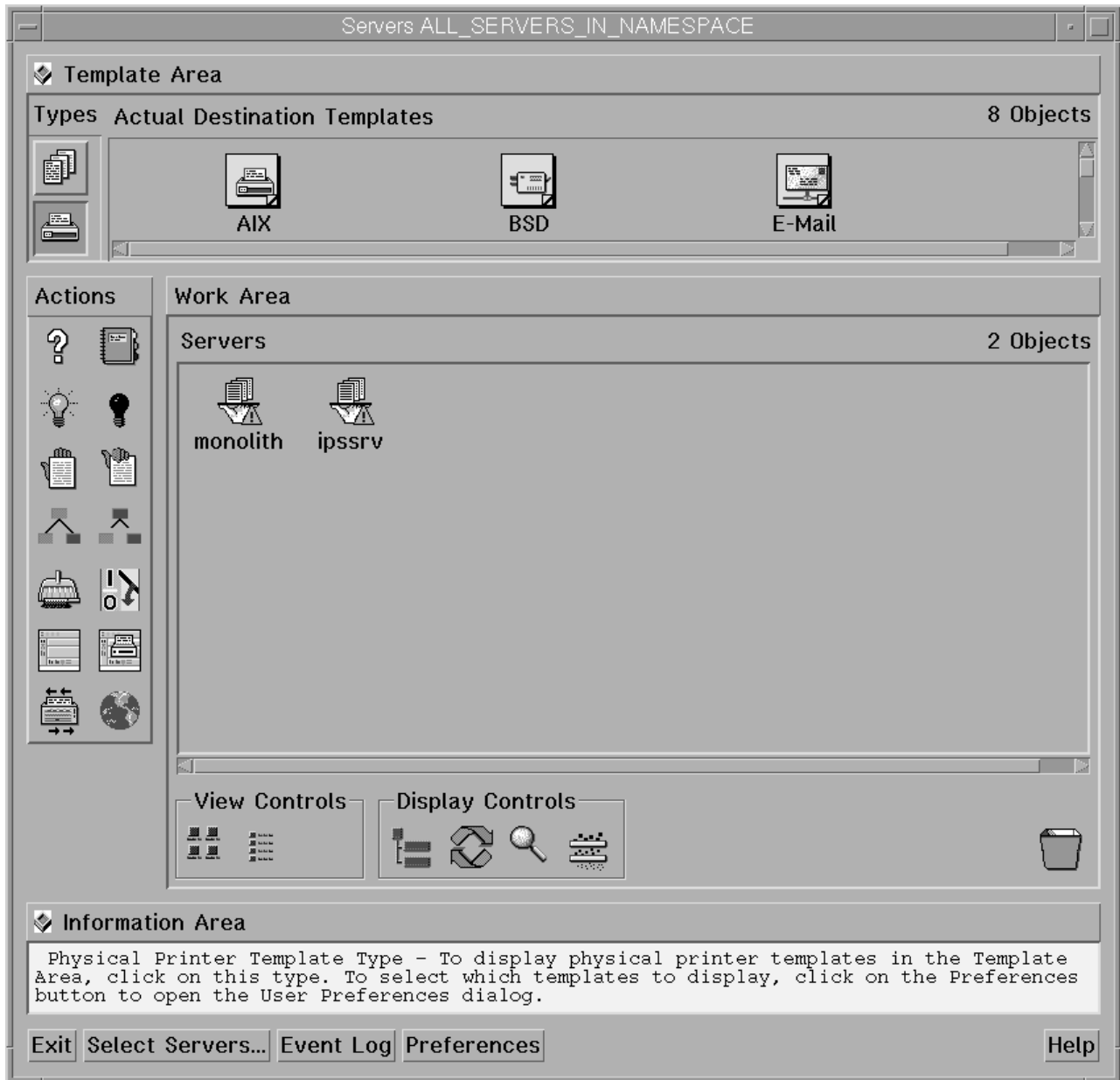


Figure 10. Actual Destination Template Type pane.

- If there is already an email template in the set of templates, go to step 8. If an email template does not exist, continue with step 6.
6. From the **Servers** window, go to the bottom of the window and click on the **Preferences** button. This step opens the **User Preferences** window.
 7. From the **User Preferences** window, click on the **List** button to the right of the **Display actual destination templates** field. This step opens the **Template selection** pop-up menu.
 8. From the Template selection pop-up menu, click on the **Email** name. This step puts the **Email** template (displayed below) inside the **Actual Destination Templates** pane.



Figure 11. The Email icon.

9. Drag the system-defined **Email Template** icon from the **Actual Destination Templates** pane onto the **server** icon that resides in the Servers area of the Work Area.
10. From the Add Email Destination pop-up window (displayed below), specify an actual destination name in the **Email destination name** field, such as **email1**, and use the queue you just created (**emailq**) for the **Queue jobs are received from** field. Press **OK** to create the actual destination.

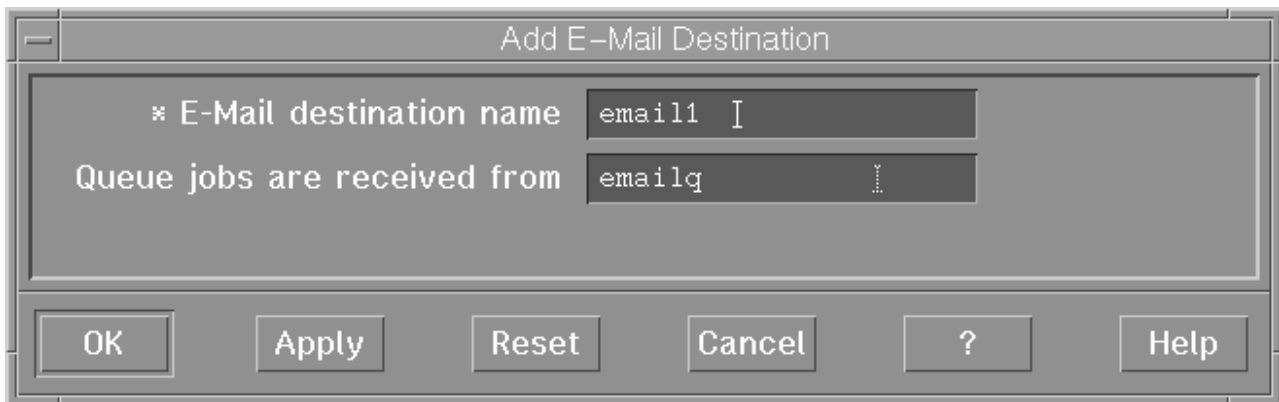


Figure 12. Add E-Mail Destination window.

- Note:** You cannot create more than one email destination on any one server. If you attempt to do so, the system responds with a message (cannot create more than 1 email destinations) and does not allow you to proceed.
11. From the **Servers** window, highlight the server icon from the **Work Area** pane and click on the **Open Window** icon from the Actions area. This step opens the **Server/Objects** window, where you can create the Logical Destination for Email.
 12. From the **Server/Objects** window, you should see the email queue you created in the **Queues** area. If it is not visible, drag down the sash on the right side of the **Work Area** pane (a small raised square) to open the Queues area.
 13. From the **Server/Objects** window, drag the system-defined **Logical Destination** icon onto the **emailq** icon that resides in the **Queues** pane.

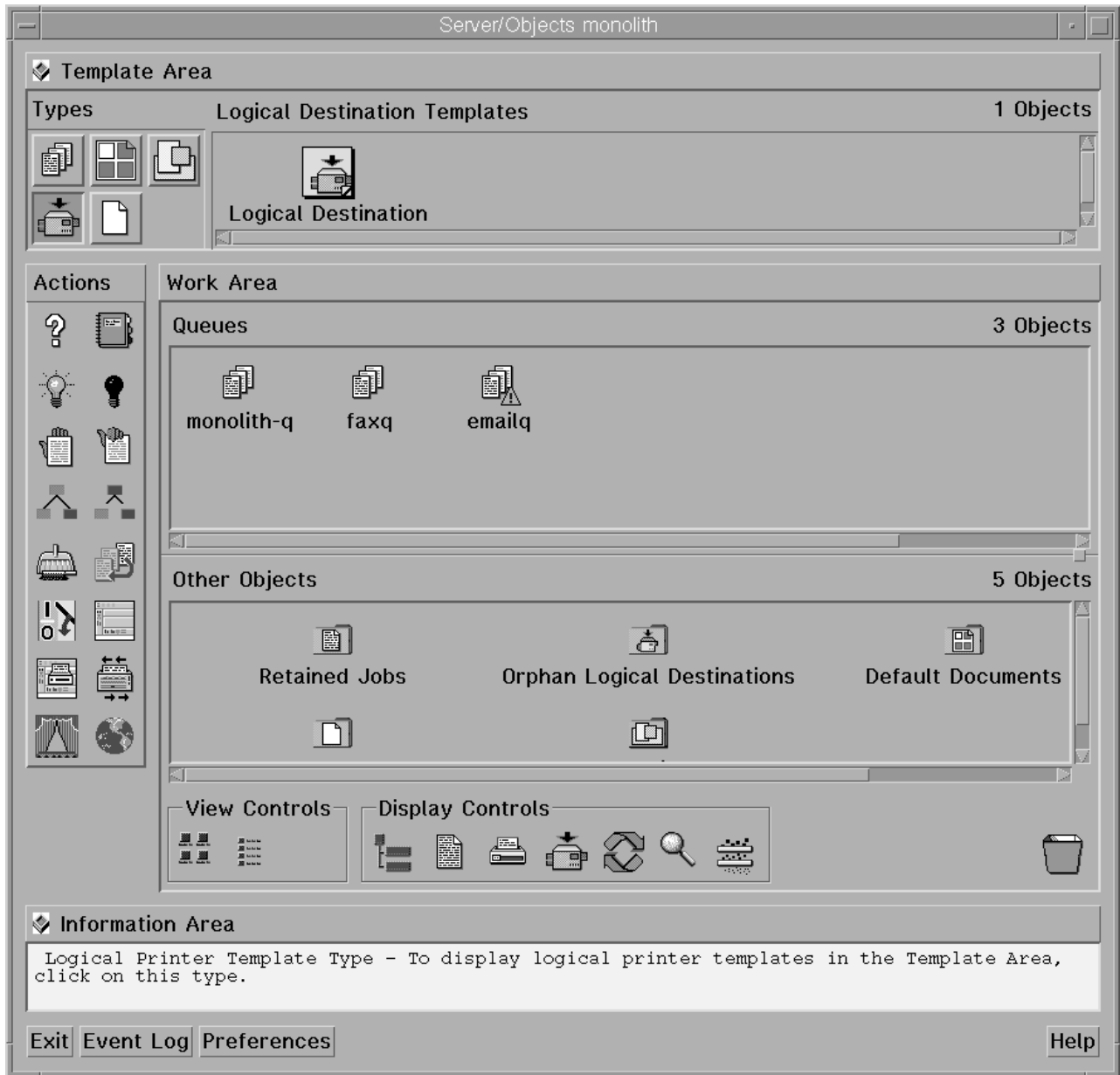


Figure 13. The Server/Objects window.

14. From the **Add Logical Destination** pop-up window, specify a logical destination name in the **Logical destination name** field, such as **email1-ld**.

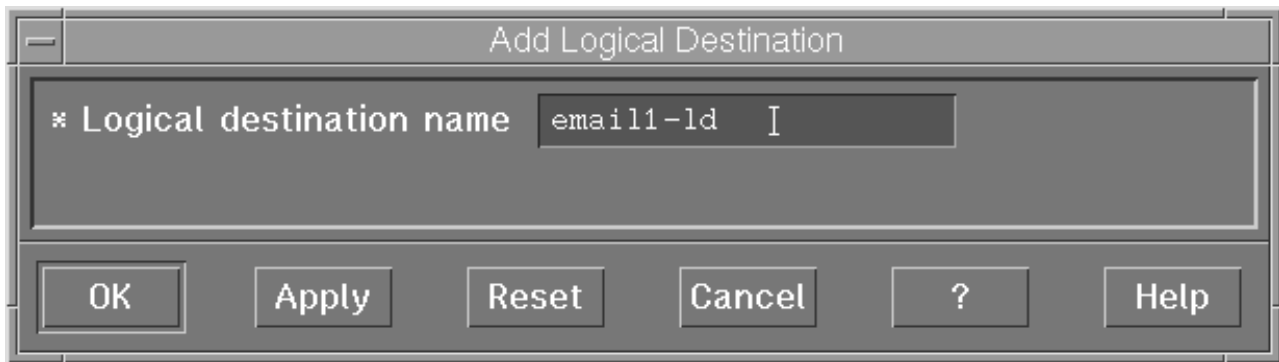


Figure 14. The Add Logical Destination pop-up window.

15. To verify that the logical destination is attached to the print queue, double-click on the **emailq** icon to show the logical destination and the actual destination for the **emailq** queue.
16. To enable this destination, drag the **Enable** icon from the Actions area and drop it on the Email actual destination that you just created.
17. To enable the logical destination drag the **Enable** icon from the Actions area and drop it on the Email logical destination that you just created.
18. Shut down and reboot the Infoprint AIX server (which will start the resident Lotus Notes server) before you can begin to “Chapter 2. Submitting Email Jobs” on page 17.
19. Once you have rebooted the Infoprint AIX server, verify that the Lotus Notes server has started by specifying the following from an AIX command line: `ps -ef | grep server`.
If the command response does not show the Lotus Notes daemon as active (returning a display with `/opt/lotus/notes/latest/ibmpow/server`), you must start the Lotus Notes server from the command line by specifying the following from an AIX command line: `/notesr4/scripts/startup`.

Chapter 2. Submitting Email Jobs

Once you have installed and configured the Email option, you can submit jobs to a particular output destination by using the command-line anywhere that you have the **pdpr** command installed. The following topic shows the command syntax and provides three examples for submitting email jobs:

- Submitting attributes through a file with the **-Z** option
- Submitting files with a Korn Shell Script
- Submitting text files with a Korn Shell Script

For specific information about the **pdpr** command and its attributes, refer to the *Infoprint Manager: Reference*, which is available from the Infoprint Manager for AIX 3.2 Product Library page (<http://www.printers.ibm.com/R5PSC.NSF/Web/ipmrefinfo32>) on the web.

For an explanation of each variable on the command-line, consult the following table:

Variable	Definition
<i>logical_destination</i> Example: -p email1-ld	Specifies the logical destination that you defined when configuring the Email option through either the Basic or the Advanced VSM graphical user interface. For more information about configuring both logical and actual destinations and using the pdpr command, see the <i>Infoprint Manager Reference</i> .
<i>emailfilename</i> Example: -Z /email_script/samp.script	Specifies a file that contains the job attributes, the name of the file you are sending, and the email destination to which you are sending the e-mail. Email attributes include cover sheet information, billing code information, and other options. Note that only subject-text , email-body , and email-signature are the only required attributes.

IBM recommends that you create sample attribute scripts that you can customize for your particular site. While you can specify email attributes on the command line, IBM recommends using an attribute file.

Example 1: Submitting Attributes through a File with the **-Z** Option

You can create a sample attribute file using an input date type of AFP, PostScript, or Portable Document Format and submit it as the *emailfilename* for the syntax listed above:

```
-x email-from-address=root@serv.us.name.com
-x email-to-address=johndoe@us.name.com
-x subject-text="Test Script"
-x document-type=printable
  /usr/lpp/ps/sample.pdf
```

```
-x document-type=email-body
  /email_script/body.txt
-x document-type=email-signature
  /email_script/sig.txt
```

At the command-line, use the following syntax to use this attribute file:

```
pdpr -p logical_destination -Z emailfilename
```

where *logical_destination* is **email1-ld** and *emailfilename* could be named **/email_script/samp.script** and stored on your local system. Note that you must have defined a **body.txt** file and a **sig.txt** file for this script to work correctly.

This attribute file sends a report to a 'johndoe' Internet ID, using a logical destination (printer) named **email1-ld** that you specify from the command line. Note that the convention *us.name.com* is used to indicate a company-wide addressing system, where it indicates the country (*us*), the company name (*name*) and the communications name (*com*) for all fully-qualified addresses in the company.

Note that you cannot put comments in an attributes file using the **-Z** option.

This script does not print ASCII input data. To print ASCII input files, see Submitting Text Files with a Korn Shell Script.

Example 2: Submitting Files with a Korn Shell Script

You can create a Korn shell script (named **sendfile** for this example) with a simpler command syntax because the **pdpr** command is included within the shell script.

Create a file that contains the **pdpr** command and all its attributes. Create the following Korn shell script and place it in a directory on the AIX system where you have installed the **pdpr** command.

The file should look similar to the following:

```
# Sample Attribute File for Infoprint Manager Email
# using a script to submit
# sendemail $1 $2
# $1 is required as the name of the file to send.
# $2 is optional as the recipient of the email.
#
#! /usr/bin/ksh

if [[ -a $1 && -n $1]]
then

if [ $2 ]
then
WHOTO=$2
else
WHOTO="johndoe@us.name.com"
fi
/usr/lpp/pd/bin/pdpr -p email1-ld \
-r brief \
-x email-to-address=$WHOTO \
-x email-from-address=root@serv.us.name.com \
-x "subject-text='Your requested Email file'" \
-x document-type=printable $1 \
-x document-type=email-body /email_script/body.txt \
-x document-type=email-signature /email_script/sig.txt
```



```

else
echo " sendfile: could not locate file [$1]"
fi

```

At the command-line, this Korn shell script would use the following syntax:

```
sendfile outputfilename [destination]
```

where *outputfilename* specifies the file that you are sending (**sample.pdf**) and *destination* is the email address (**johndoe**) to which you are sending the file.

This script sends an email to either the *destination* value that you specify as the second argument on the AIX command line, or to 'johndoe' Internet ID, if you take the default. The script uses a logical destination (printer) named **email1-ld** on your Infoprint AIX server. This file uses the **enscript** AIX command to convert the text file to PostScript, stores that PostScript file in the **/tmp** directory on the submitting AIX system, and then deletes that file once the **pdpr** command has submitted the PostScript file to the Infoprint AIX server.

Note that the convention *us.name.com* is used to indicate a typical Internet address for a business.

Example 3: Submitting Text Files with a Korn Shell Script

You can create a Korn shell script (named **sendtxtfile** for this example) to submit ASCII text files as Email.

Create a file that contains the **pdpr** command and all its attributes. Create the following Korn shell script and place it in a directory on the AIX system where you have installed the **pdpr** command.

The file should look similar to the following:

```

# Sample Korn Shell
Script for Infoprint Manager Email Text
#
# Uses a script to submit:
# sendtxtemail $1 $2
# $1 is required as the name of the file to send.
# $2 is optional as the recipient of the email.
#
# This script takes an ASCII file as input and creates
#PostScript output that is submitted with the pdpr command
# as email.

#!/usr/bin/ksh
if [[ -a $1 && -n $1]]
then

if [ $2 ]
then
WHOTO=$2
else
WHOTO="johndoe@us.name.com"
fi
# Make temporary PostScript file
enscript -p /tmp/$$email.txt $1

/usr/lpp/pd/bin/pdpr -p email1-ld \
-r brief \
-x email-to-address=$WHOTO \

```

```

-x email-from-address=root@serv.us.name.com \
-x "subject-text='Your requested Email file'" \
-x document-type=printable /tmp/$$email.txt \
-x document-type=email-body /email_script/body.txt \
-x document-type=email-signature /email_script/sig.txt
# Delete temporary PostScript file
rm /tmp/$$email.txt

else
echo " sendtxtfile: could not locate file [$1]"
fi

```

At the command-line, this Korn shell script would use the following syntax:

```
sendtxtfile outputfilename [destination]
```

where *outputfilename* specifies the file that you are sending (**email.txt**) and destination is the email address (**johndoe**) to which you are sending the file.

This script sends an email to either the destination value that you specify as the second argument on the AIX command line, or to 'johndoe' Internet ID, if you take the default. The script uses a logical destination (printer) named **email-ld** on your Infoprint AIX server. This file uses the **enscript** AIX command to convert the text file to PostScript, stores that PostScript file in the **/tmp** directory on the submitting AIX system, and then deletes that file once the **pdpr** command has submitted the PostScript file to the Infoprint AIX server.

Note that the convention *us.name.com* is used to indicate a typical Internet address for a business.

Printing Color Email

If you have color Portable Document Format (PDF) or PostScript files, you can send these files to target email address through Infoprint Manager and receive color output. Ensure that no matter what method you use to submit the job to the Infoprint Manager AIX server, you specify the `-x job-ripped-by-server = false` job attribute to ensure that the Infoprint AIX server sends the file as email without converting the data stream to **MOD:CA-P** format.

Note: Color Email is not supported if your Email job sent to an Actual Destination contains any of the attributes specified in the lists that follow. If these attributes or conditions are sent to an Actual Destination, the file will print as black-and-white (MO:DCA-P) output.

Document Attributes Not Supported for Color Email:

```

ACCOUNT_TEXT
ADDRESS1_TEXT
ADDRESS2_TEXT
ADDRESS3_TEXT
ADDRESS4_TEXT
CARRIAGE_CONTROL_TYPE
CHARS
CONVERT_TO_EBCDIC
DEFAULT_CHARACTER_MAPPING
FONT_FIDELITY_ACTION
FONT_RESOLUTION
FORM_DEFINITION
IMAGE_FIT
IMAGE_LENGTH

```

October 22, 2001

IMAGE_WIDTH
INPUT_EXIT
NEW_LINE_OPTION
NUMBER_UP
OTHER_TRANSFORM_OPTIONS
OUTPUT_BIN
OUTPUT_FORMAT
OVERLAY
PAGE_DEFINITION
PAGE_SELECT
PLEX
RESOURCE_CONTEXT
RESOURCE_CONTEXT_FONT
RESOURCE_CONTEXT_FORM_DEFINITION
RESOURCE_CONTEXT_PAGE_DEFINITION
RESOURCE_CONTEXT_PAGE_SEGMENT
RESOURCE_CONTEXT_OVERLAY
RESOURCE_CONTEXT_USER
SHIFT_OUT_SHIFT_IN
SIDES
TABLE_REFERENCE_CHARACTERS
TRANSFORM_MESSAGE_FILE_NAME
TRANSFORM_OUTPUT_FILE_NAME
X_IMAGE_SHIFT
Y_IMAGE_SHIFT

Job Attribute Conditions Not Supported for Color Email:

1. Any use of the JOB_FINISHING attribute.
2. If the job is a variable data job or contains:
 - More than one printable document
 - an insert sheet
 - a file-reference document
 - a document with document_format=modca
 - a document with job_rip_action=rip_and_hold or job_rip_action=rip_only
 - a copy_count attribute set higher than 1.

Index

Special Characters

- Z option
 - using to submit attributes through a file 17

A

- accessing the Lotus Notes interface 1

C

- color email
 - unsupported document attributes 20
 - unsupported job attributes 21
- configuring email 1
- configuring the Lotus Notes connections view 2
- configuring the Lotus Notes domains view 3
- configuring the Lotus Notes server 1
- configuring the Lotus Notes servers view 5
- connections view for Lotus Notes, configuring 2
- create a fax or email destination, advanced VSM 10
- creating an email destination
 - using the VSM Advanced Server interface 10
 - using the VSM Basic Server interface 7
- creating an Infoprint email destination 7

D

- directories
 - /tmp 19
 - /var/psf/segments 1
- Directories
 - /tmp 20
- document attributes not supported for color email 20
- domains view for Lotus Notes, configuring 3

E

- email destination, creating 7
- exiting the Lotus Notes interface 7

F

- file size for /var/psf/segments 1
- files
 - body.txt 18

- files (*continued*)
 - email_script/samp.script 18
 - sig.txt 18

G

- Graphical User Interfaces
 - VSM Advanced Server 10
 - VSM Basic Server 7
- GUIs, see Graphical User Interfaces 7, 10

I

- Infoprint email destination, creating 7

J

- job attribute conditions not supported for color email 21

K

- Korn shell script, submitting email files 18
- Korn shell script, submitting email text files 19

L

- Lotus Notes interface, exiting 7

P

- printing color email 20

S

- servers view for Lotus Notes, configuring 5
- submitting attributes through a file with the —Z option 17
- submitting email jobs 17
- submitting files with a Korn shell script 18
- submitting text files with a Korn shell script 19

V

- VSM Advanced Server interface
 - creating an email destination 10
- VSM Basic Server interface
 - creating an email destination 7