
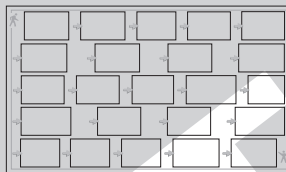


# IBM InfoPrint 20 Quick Reference Card



## ① Install your printer and turn it on.

See the **Quick Setup Poster**  that came with your printer for instructions.



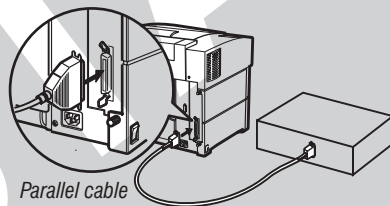
## ② Print a configuration page.

See the **Operator Panel** section of this **Quick Reference Card** for instructions.

## ③ Install any options, such as duplex unit, extra paper tray, 2000-sheet input drawer, network card, or SIMM.

See the instructions that accompany each option for installation instructions.

## ④ Connect the printer to a parallel cable or network.



Parallel cable connection

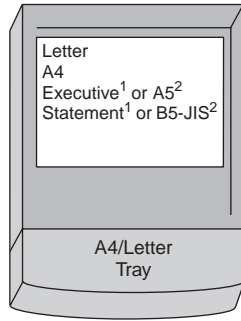
See the documentation that comes with the **IBM Network Card** for instructions on connecting your printer to a network.

## ⑤ Install the printer drivers for your operating system.

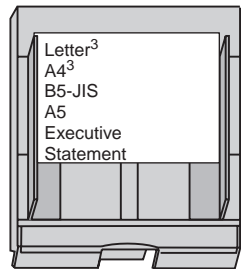
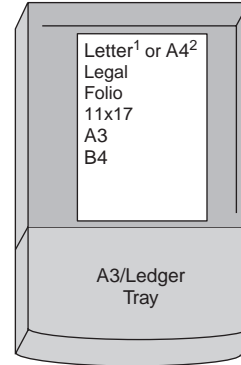
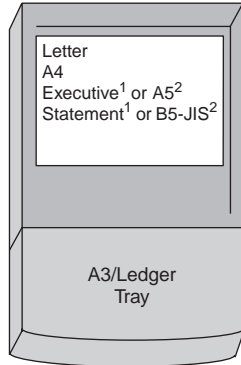
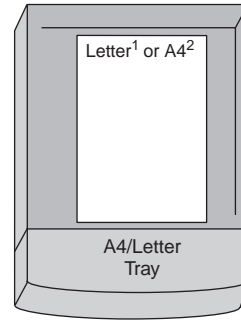
Follow the instructions on the **CD-ROM**.

# Loading Paper

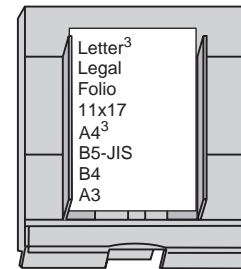
LEF (Long-edge feed)



SEF (Short-edge feed)



Auxiliary Tray



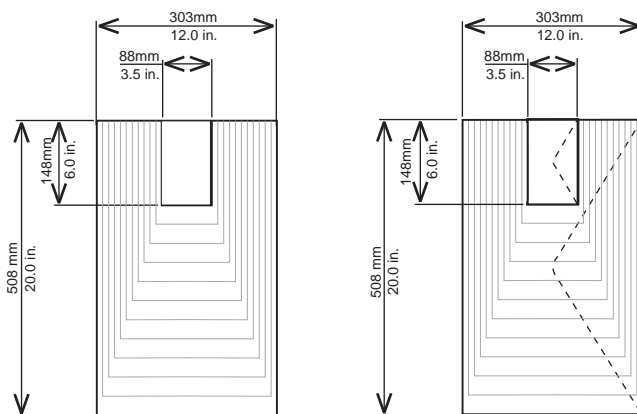
Auxiliary Tray

**Notes:**

1. LTR group only (U.S./Canada default).
2. A4 group only (Europe/Asia default).
3. You can also use the auxiliary tray to print Letter- or A4-size laser-compatible transparencies or label sheets.

## Universal-Size Paper and Envelopes

Maximum and Minimum Universal Sizes



Universal Paper

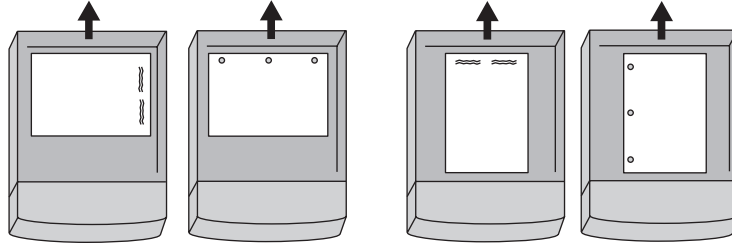
Universal Envelope

To use variable size paper or envelopes:

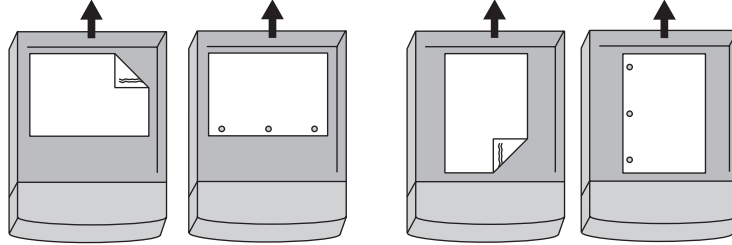
1. Load media into the auxiliary tray short edge first.
2. Set the AUXSIZE item in the Paper Menu to UNIV or UNI-ENV.
3. Make sure your print application formats the data for the paper or envelope size you use.

# Loading Letterhead and Prepunched Paper in the paper trays or in the auxiliary tray

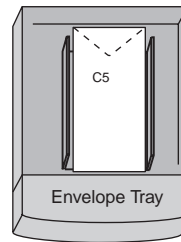
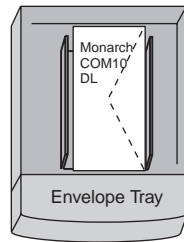
## Simplex



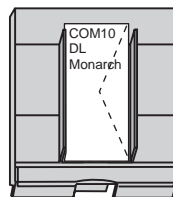
## Duplex



# Loading Envelopes and Postcards

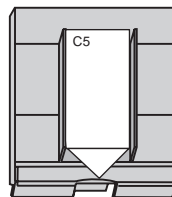


SEF (Short-edge feed)



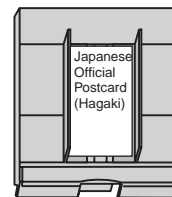
Auxiliary Tray

SEF (Short-edge feed)



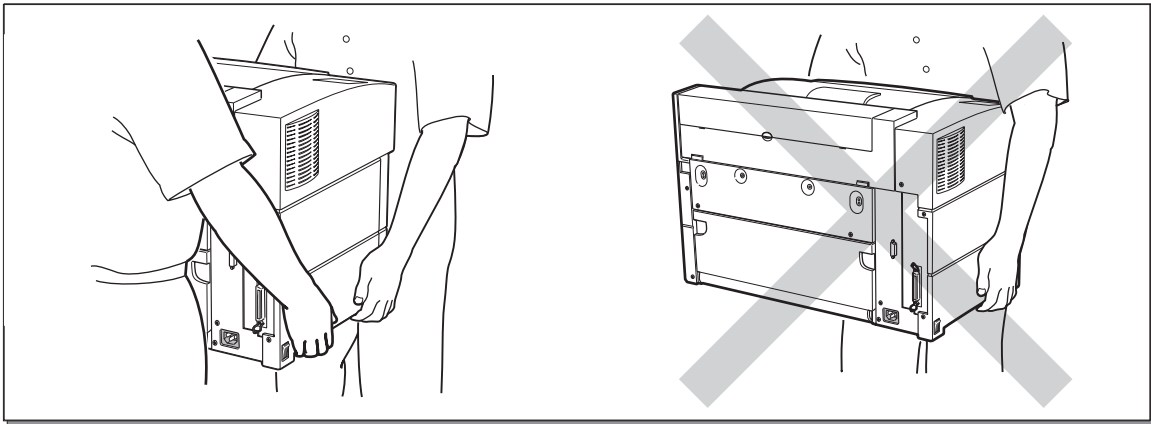
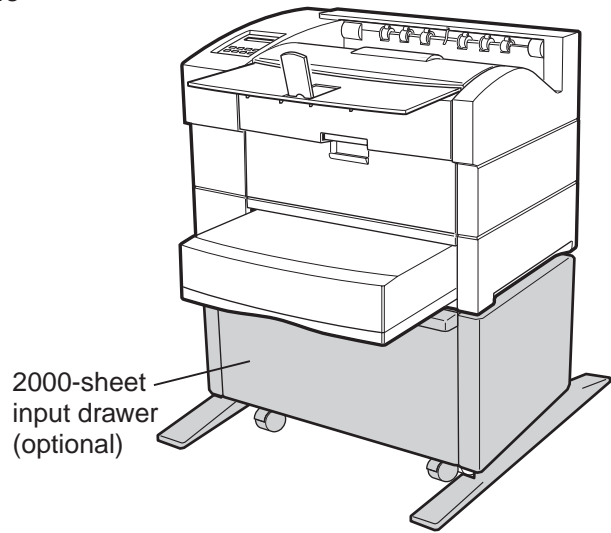
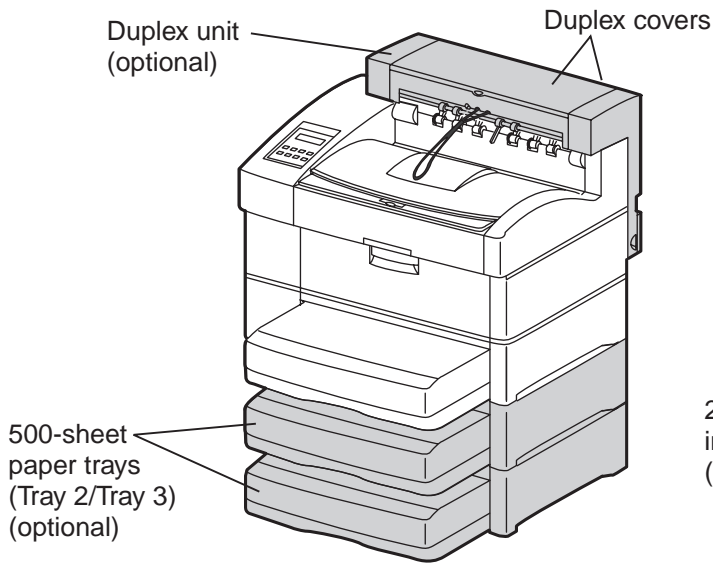
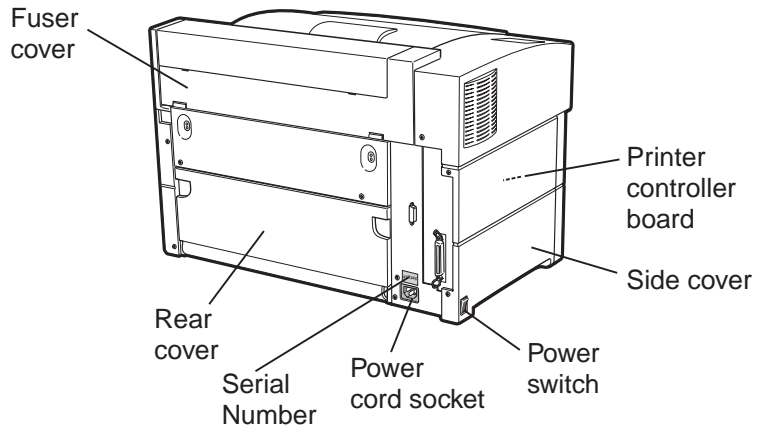
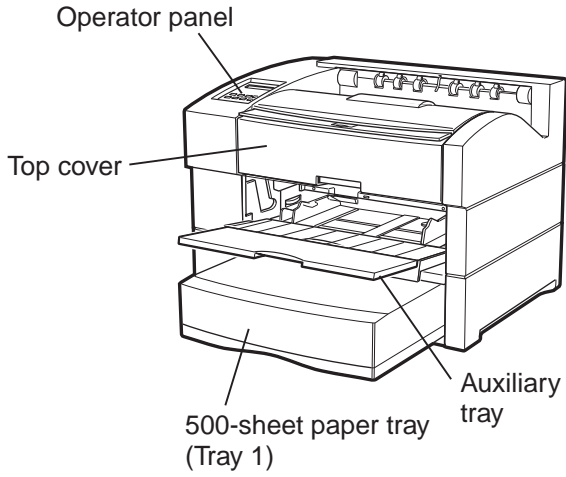
Auxiliary Tray

SEF (Short-edge feed)

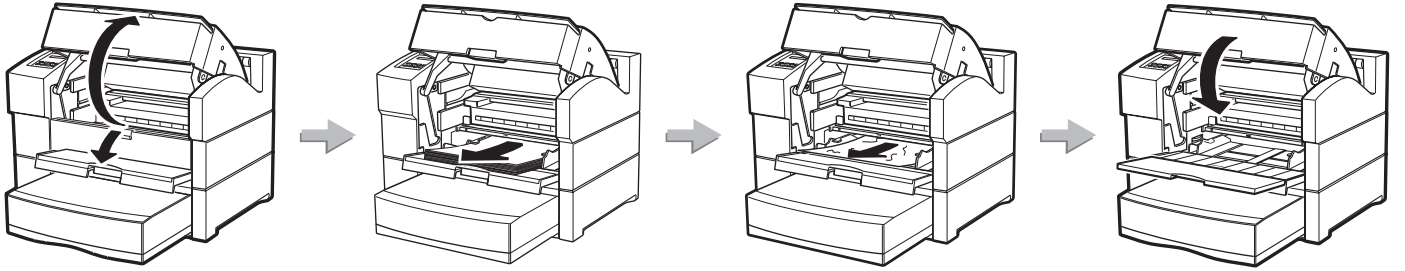


Auxiliary Tray

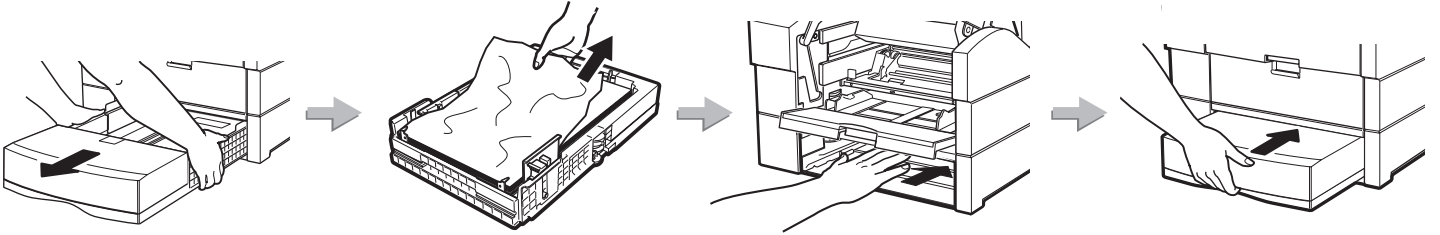
# Location of Printer Parts



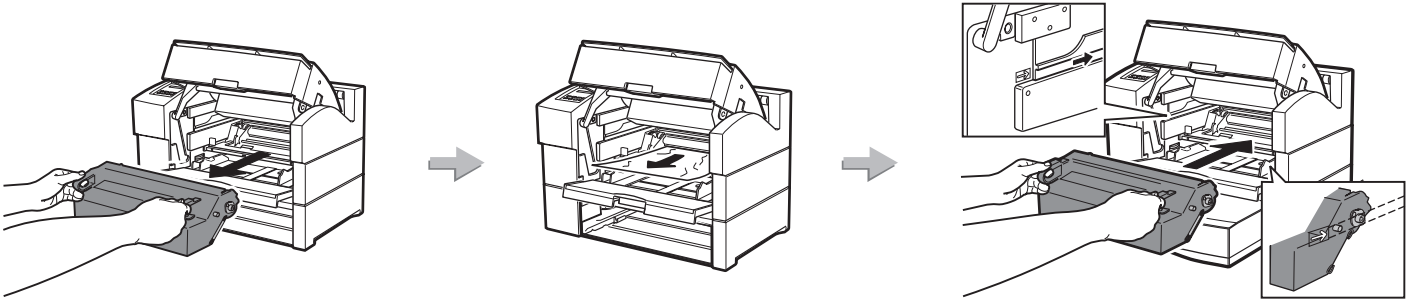
# Clearing Paper Jams



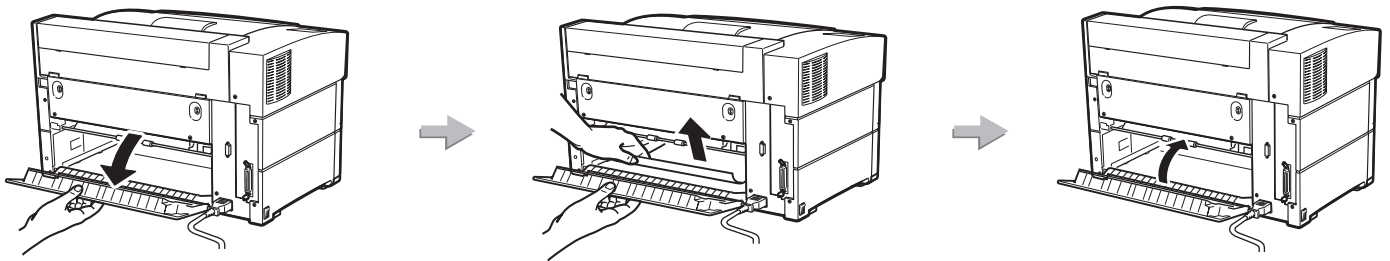
Auxiliary tray



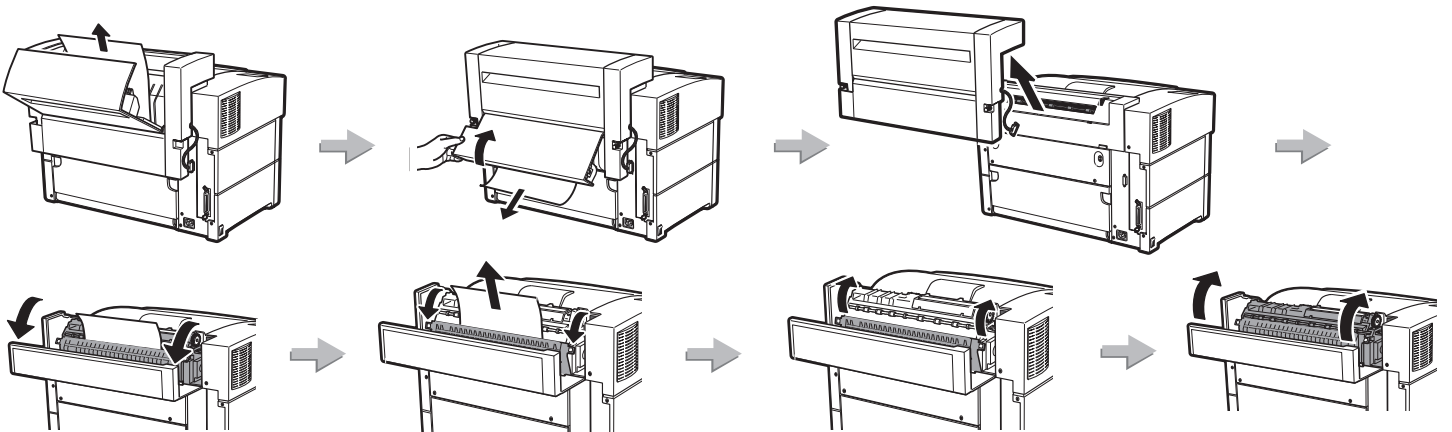
Paper tray



Toner cartridge area

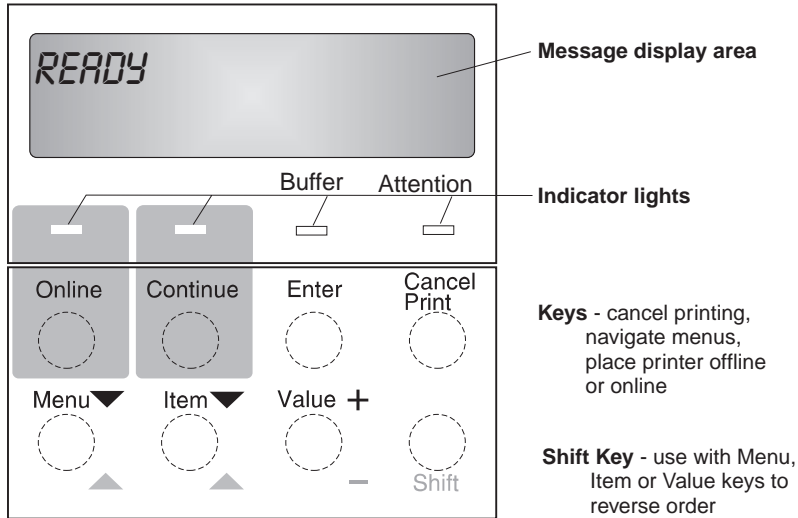


Rear cover area



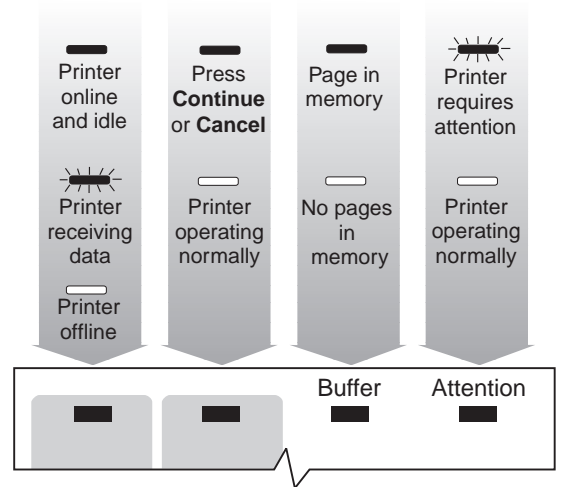
Fuser area

# Operator Panel



## Indicator Lights

- = On
- ⚡ = Blinking
- = Off

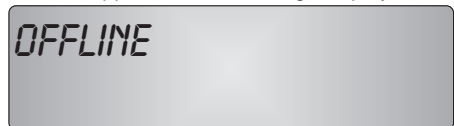


## Common Messages

Message	Action
READY	None required, the printer is ready.
WARMING UP...	Wait for READY message.
I/O INITIALIZING	Wait for READY message.
OFFLINE	Update menus or press <b>Online</b> to make printer ready.
KEY NOT VALID	Some keys require the printer to be offline. Press <b>Online</b> to make printer ready.
MENU LOCKED	You can view menu settings, but you cannot change them.
POWER SAVER ON	The printer is asleep. It will wake up when it receives a job.
WAIT FOR IDLE	Wait for READY message.
02 TONER LOW	Replace toner cartridge.
<nn> COVER OPEN	Close the specified cover.
11 LOAD <paper size> IN <tray>	Load paper of the specified size in the specified tray.
12 MANUALLY LOAD <paper size> IN AUX	Load paper in the auxiliary tray and press <b>Continue</b> .
2<nn> PAPER JAM	Clear the jam. Then open and close the top cover to clear the jam message. See <i>Clearing Paper Jams</i> on this Quick Reference Card.
29 OUTPUT FULL	Remove prints from output bin.
<nn> ERROR CALL FOR SERVICE	Power off, then power on the printer. If error persists, call for service.

## Printing a Configuration Page

1. On the operator panel, press the **Online** key once. OFFLINE appears in the message display area.



2. Press the **Menu** key. TEST MENU appears in the message display area.



3. Press the **Item** key. CONFIG PAGE appears.

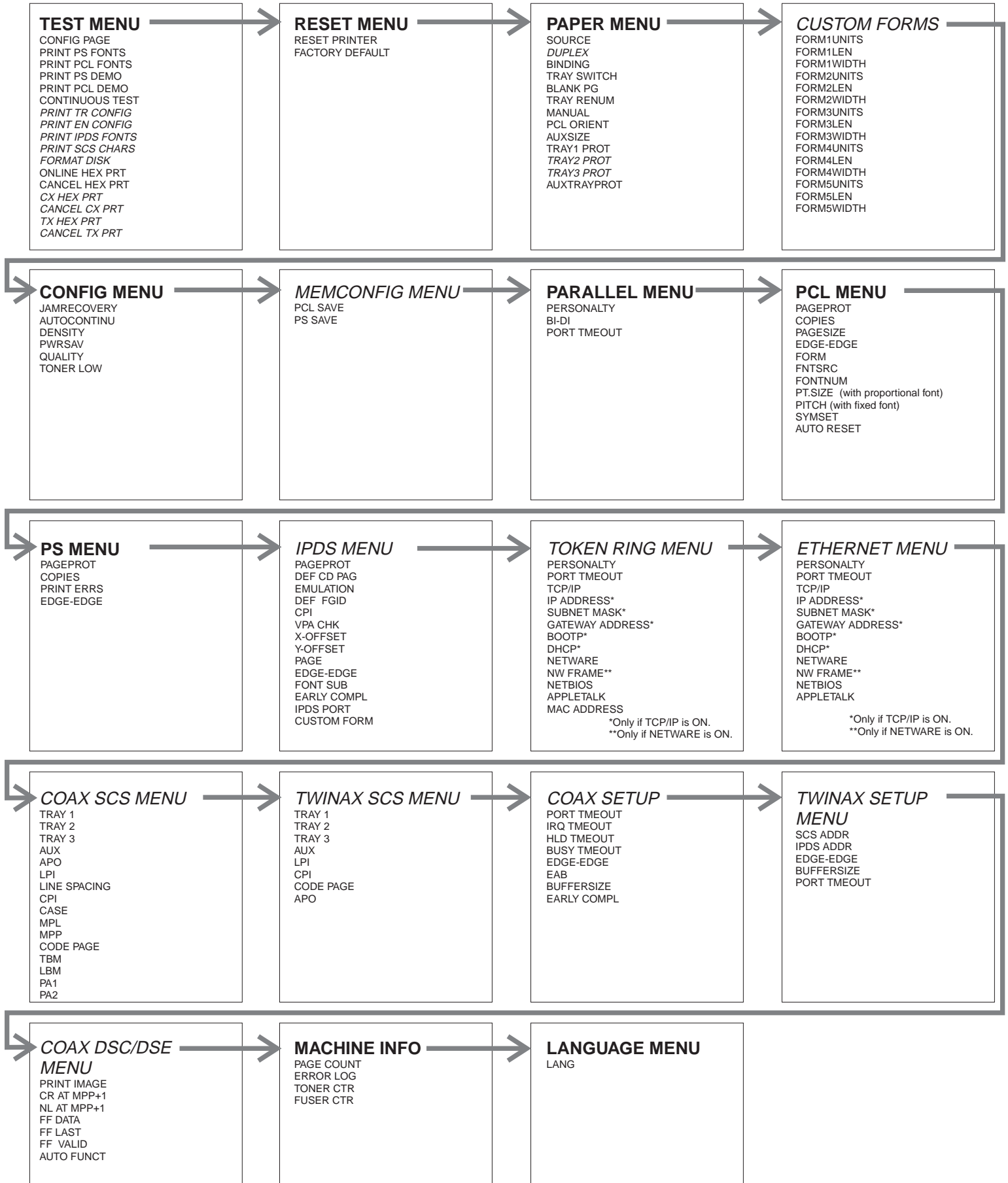


4. Press the **Enter** key to print the configuration page. (It takes a moment or two.)
5. Press the **Online** key again to restore the printer to the READY status.



# Operator Panel Menus

**Note:** Items in *italics* indicate menu items that appear only if the affected option is installed.





## Technical Support



If your printer does not print properly:

1. **Try turning the printer off** for ten seconds and turning it back on.
2. **Print a configuration page** (see *Printing a Configuration Page* on the *Operator Panel* page of this Quick Reference Card). If it prints, the problem is likely to be in the network or cabling leading to the printer. If it does not print, the problem may be in the printer.
3. **Use the troubleshooting checklist** in your *User's Guide*.
4. **Call your service representative** or IBM customer technical support (1-800-358-6661 in the USA and Canada). Be sure to have your serial number (located on the back of the printer) ready.

*Note: If you need IBM operating system support (for example, AIX, OS/2, OS/400 and MVS), contact IBM software support (1-800-237-5511 in the USA, 1-800-465-2222 in Canada) .*

## Ordering Supplies



Printing supplies can be ordered through your IBM authorized printer or printer supplies reseller.

**In the USA or Canada**, call 1-888-IBM-PRINT (1-800-426-7746) to ask for an authorized dealer or to order from IBM Printer Supplies.

**In other countries**, contact your point of purchase for information about where to order supplies.

**In Europe**, call IBM Supplies Fulfillment Operations:  
31-43-350 2756

or one of the following numbers:

- **Denmark:** 80015534
- **Finland:** 08001-13110
- **France:** 05-905871
- **Germany:** 0130 818005
- **Italy:** 1-678 78349
- **Norway:** 800-11389
- **Sweden:** 020-794270
- **United Kingdom:** 0800-968679

## For More Information...

### Contents of the CD-ROM



The CD-ROM that ships with the printer includes:

#### Documents related to your printer

- *IBM InfoPrint 20 Quick Setup Poster*
- *IBM InfoPrint 20 Quick Reference Card*
- *IBM InfoPrint 20 User's Guide*
- *IBM InfoPrint 20 Safety and Warranty Information*
- *IBM Ethernet/Token Ring Configuration Guide*
- *IBM Twinax/Coax Configuration Guide*
- *IBM IPDS/SCS Technical Reference*
- *IBM PCL/PostScript Technical Reference*

#### PCL5e and PostScript drivers for numerous operating systems

See the *CD-ROM* for details.

- **Network Tools and Utilities**
  - *Network Print Manager (NPM)* is a configuration tool for network administrators.
  - *Network Printer Resource Utility (NPRU)* is a utility for downloading fonts and overlays to printer memory.
  - *Network Port Monitor* is a utility for reporting printer and job status to Windows NT 4.0 users and clients of Windows NT servers on other Windows platforms.

See the *Readme* file on the CD-ROM for more information.

### IBM Printing Systems Company Home Page

To obtain the latest versions of the InfoPrint 20 documentation, printer drivers, utilities, and programs:

1. Access the IBM Printing Systems Company home page:  
<http://www.printers.ibm.com>
2. Navigate to the document, printer driver, utility, or program you need and follow the instructions to download it.