

***Downloading IBM Workplace
Collaboration Services V2.5 for
iSeries from the IBM Software Access
Catalog***
by **Daniel Hill**

IBM eServer Solutions Enablement

May 2005

Table of contents

Overview.....	3
Download Workplace Collaboration Services V2.5 from the IBM Software Access Catalog.....	3
Creating Workplace Collaboration Services install files.....	10
WebSphere install files	13
WebSphere Enterprise Enablement install files	14
Summary	14
Trademarks and disclaimers	15

Overview

This lab is designed to help you successfully download and prepare the media for installing IBM® Workplace™ Collaboration Services Version 2.5 on an IBM eServer iSeries system. This product provides a host of integrated, ready-to-use communication and collaboration tools that enable people to do their jobs more effectively, anytime, anywhere.

Gaining access to Workplace Collaboration Services V2.5 from IBM PartnerWorld® for Developers Software Access Catalog requires only a few easy steps. If your company is registered with PartnerWorld for Developers and you are not listed as a contact, you will need to locate the primary contact in your company for the PartnerWorld for Developers membership before continuing with this paper.

Download Workplace Collaboration Services V2.5 from the IBM Software Access Catalog

1. Open a browser to the *IBM Software Access Catalog* Web site: www.developer.ibm.com/welcome/softmall.html and click on the **Log in to Software Access Catalog** (Figure 1).

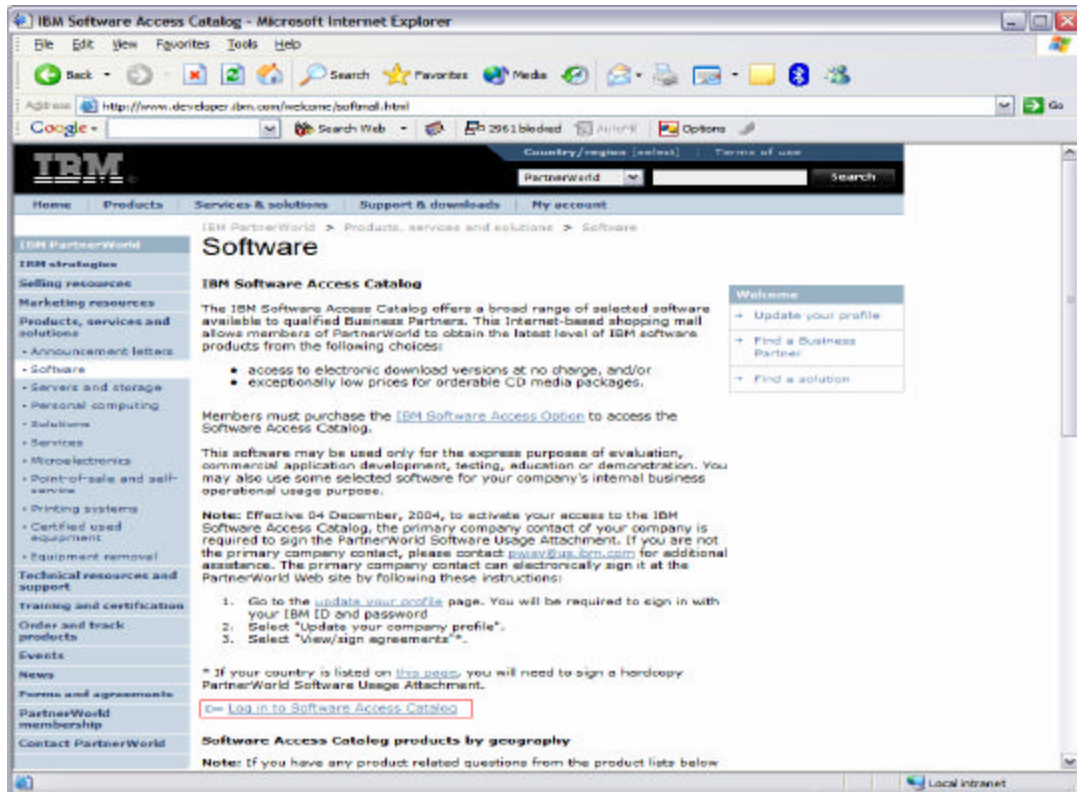


Figure 1: IBM Software Access Catalog log-in screen

Downloading IBM Workplace Collaboration Services V2.5 for iSeries from the IBM Software Access Catalog

2. Enter your PartnerWorld user ID and password (Figure 2).

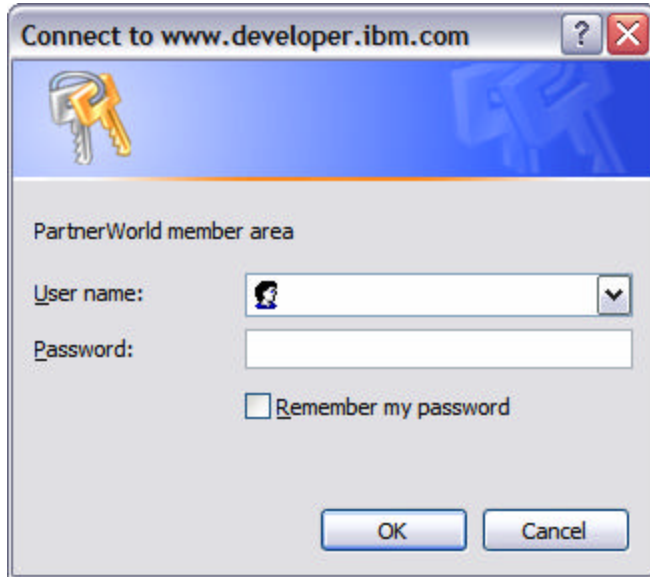


Figure 2: PartnerWorld user ID and password entry screen

3. Review the *IBM PartnerWorld Agreement — International PartnerWorld Software Usage Attachment*. Scroll down and click **I agree** (Figure 3).

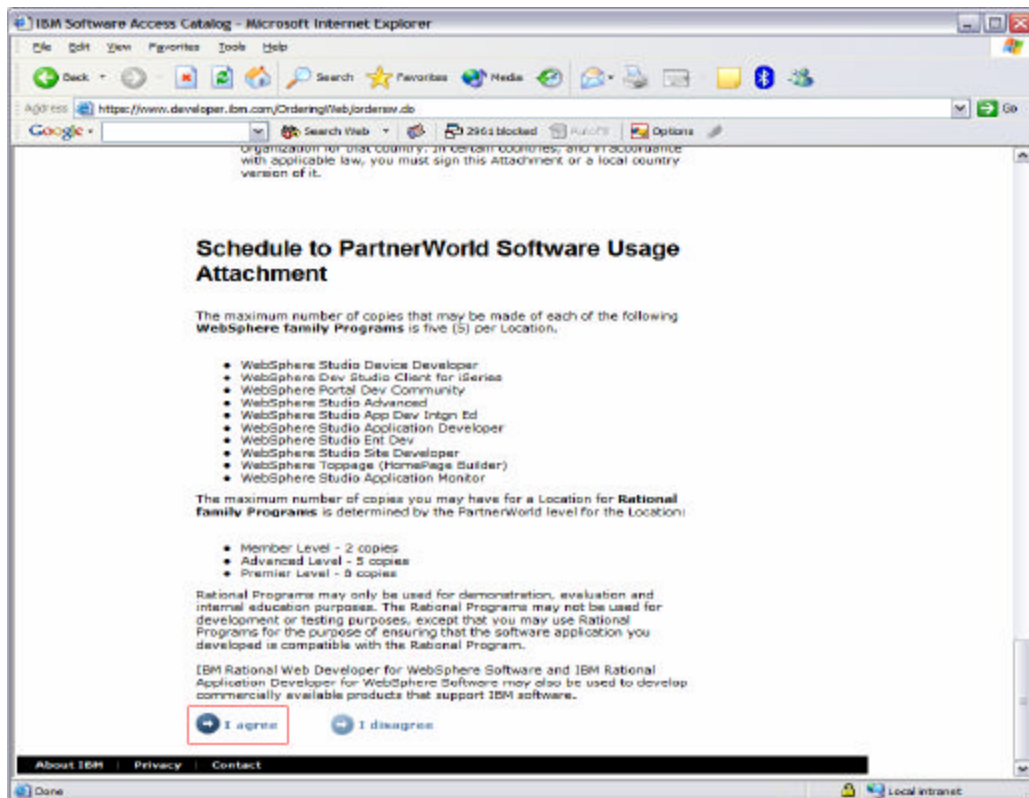


Figure 3: The PartnerWorld Software Usage Attachment

Downloading IBM Workplace Collaboration Services V2.5 for iSeries from the IBM Software Access Catalog

4. Click **Software Access Catalog - Electronic Software Download** (Figure 4) to download the IBM WebSphere® Portal (this is an optional step). To order CDs (for a nominal cost), click **Software Access Catalog - CD Media Purchases**.

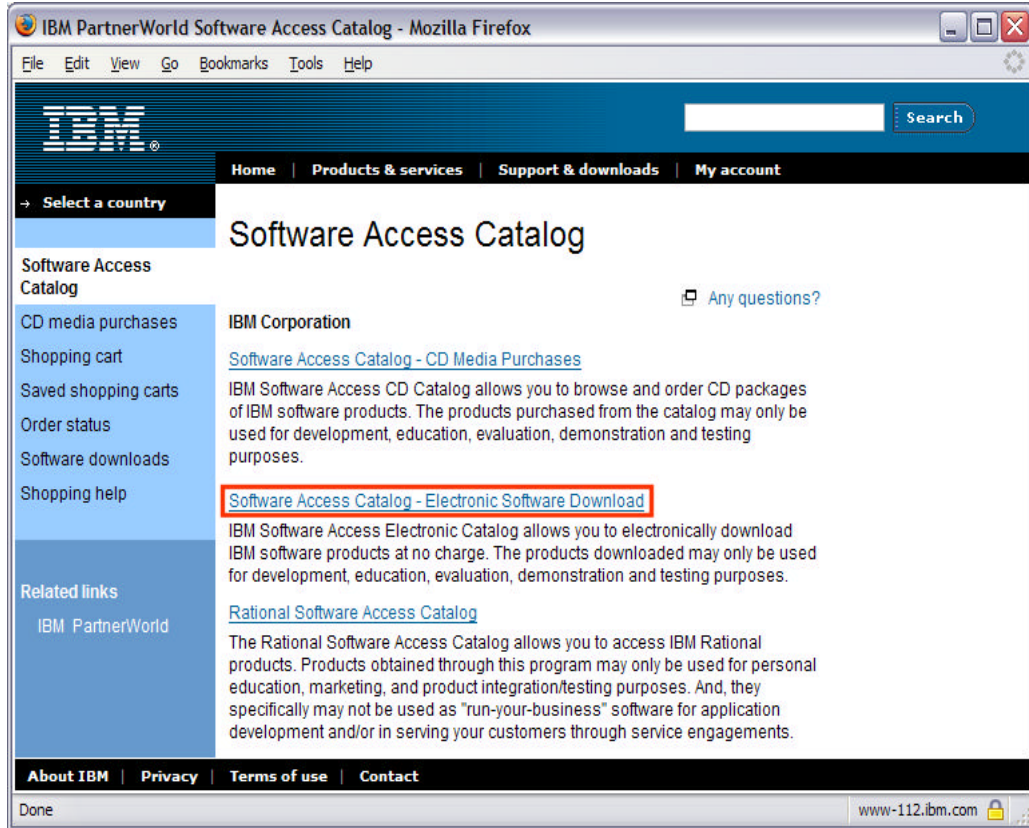


Figure 4: Software Access Catalog

Downloading IBM Workplace Collaboration Services V2.5 for iSeries from the IBM Software Access Catalog

5. The search tool searches for exact text. This is important because searching for words in the wrong order can lead to not finding the correct downloads. Enter **"IBM Workplace Collaboration Services 2.5"** in the text box, select the **All** radio button, and click **Search** (Figure 5).

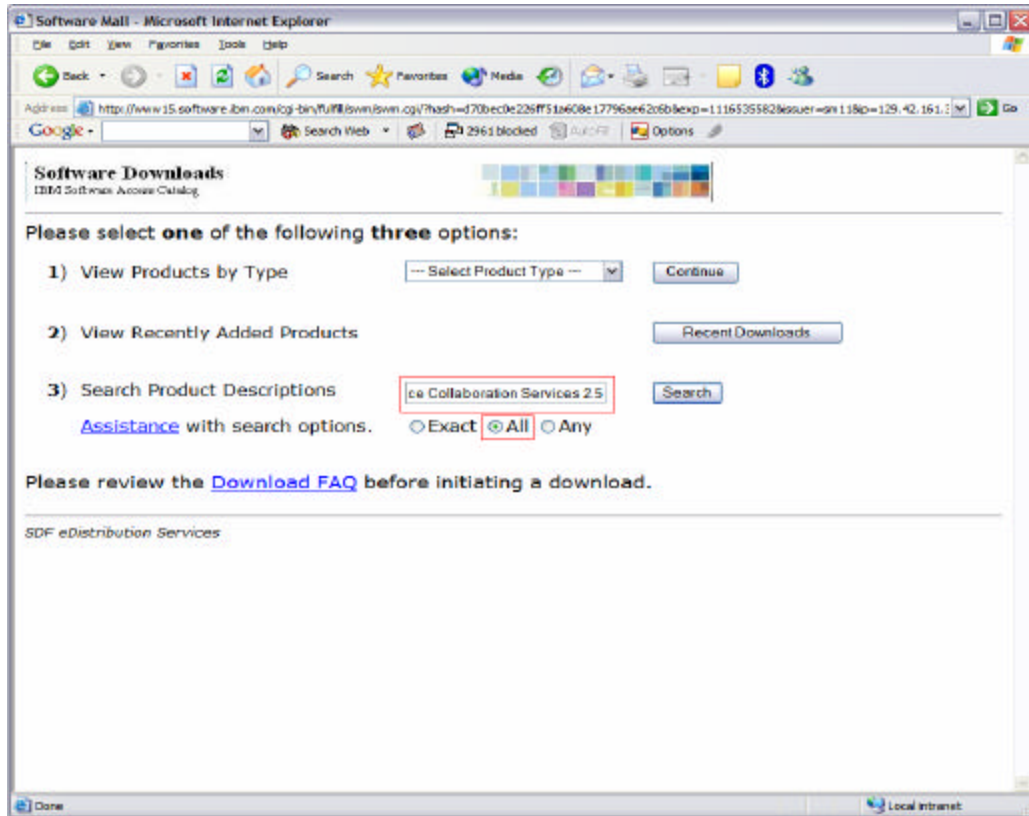


Figure 5: Search Product Descriptions

6. Create a download directory on your PC, for example:
D:\downloads
7. Create an install directory to extract the download images on your PC, for example:
D:\WCS
8. Click on **IBM Workplace Collaboration Services 2.5 Multiplatform Multilingual eAssembly** (Figure 6).

Downloading IBM Workplace Collaboration Services V2.5 for iSeries from the IBM Software Access Catalog

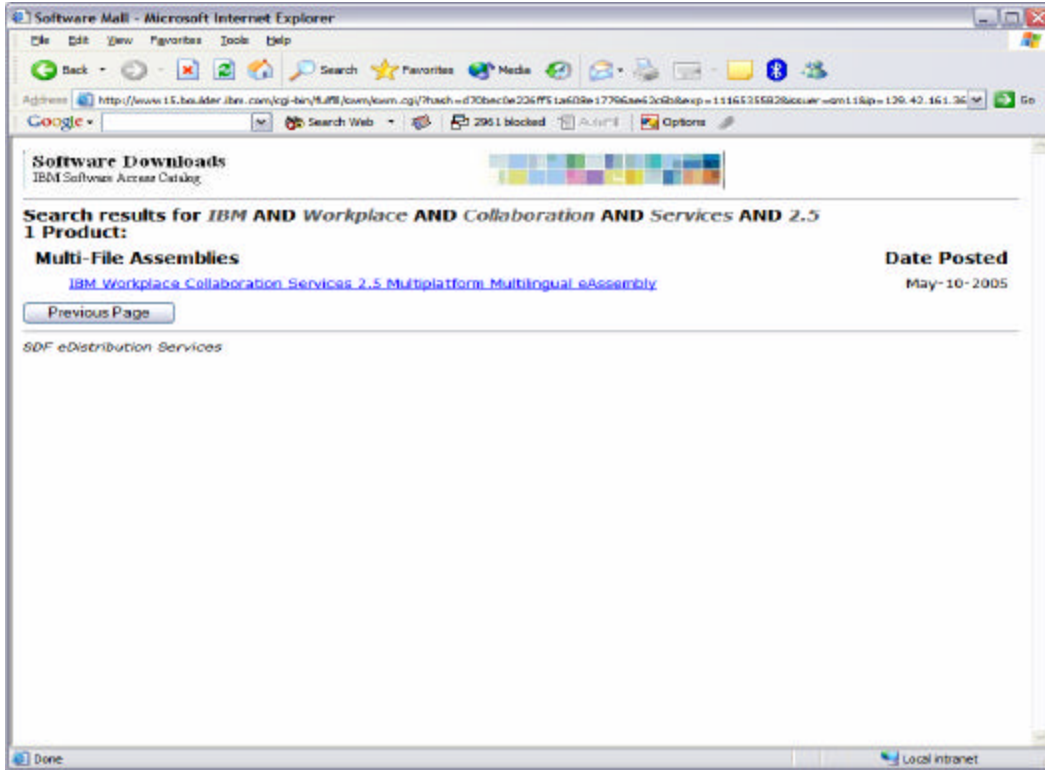


Figure 6: Search results

9. Click on the **Accept Terms** button (Figure 7).

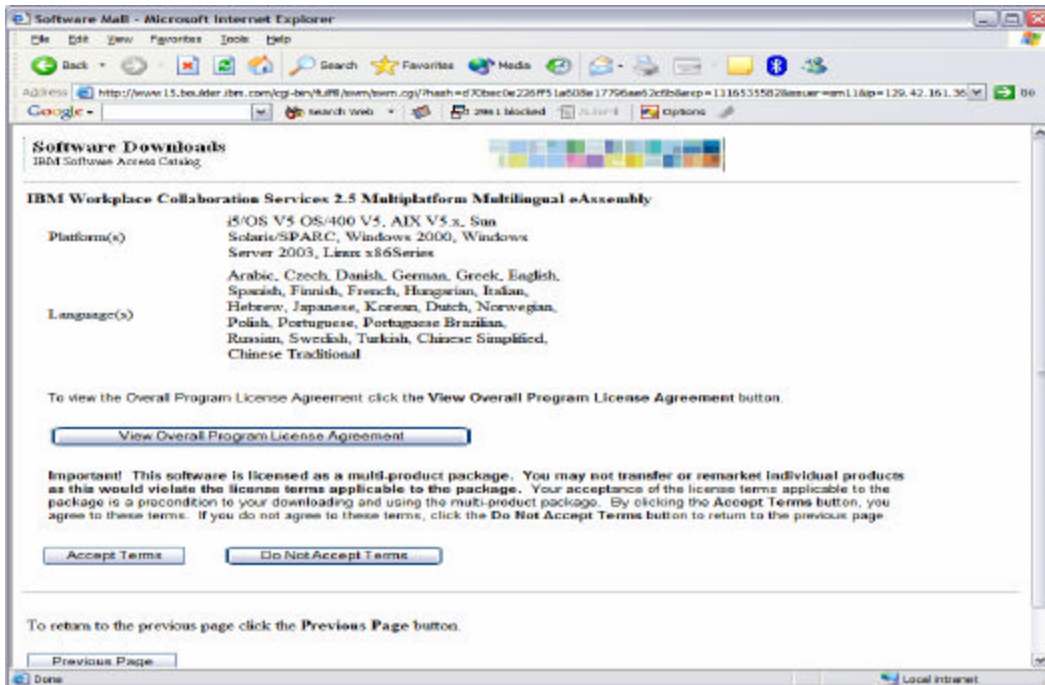


Figure 7: Accept Terms

Downloading IBM Workplace Collaboration Services V2.5 for iSeries from the
IBM Software Access Catalog

10. Download the following files:

Download 2 of 60:	Workplace Collaboration Products 2.5, Server Install and Migration Tools for Microsoft® Windows®
File Name	C83CAML.exe
File Size	463,748,608 bytes
Download 5 of 60:	Workplace Collaboration Products 2.5, Server Archive Install 1 of 7 Multiplatform
File Name	C82MFML.tar.gz
File Size	93,398,941 bytes
Download 6 of 60:	Workplace Collaboration Products 2.5, Server Archive Install 2 of 7 Multiplatform
File Name	C82MGML.tar.gz
File Size	354,392,806 bytes
Download 7 of 60:	Workplace Collaboration Products 2.5, Server Archive Install 3 of 7 Multiplatform
File Name	C82MHML.tar.gz
File Size	546,314,563 bytes
Download 8 of 60:	Workplace Collaboration Products 2.5, Server Archive Install 4 of 7 Multiplatform
File Name	C82MIML.tar.gz
File Size	445,074,281 bytes
Download 9 of 60:	Workplace Collaboration Products 2.5, Server Archive Install 5 of 7 Multiplatform
File Name	C82MJML.tar.gz
File Size	115,996,679 bytes
Download 10 of 60:	Workplace Collaboration Products 2.5, Server Archive Install 6 of 7 Multiplatform
File Name	C83XQML.tar.gz
File Size	515,068,752 bytes
Download 11 of 60:	Workplace Collaboration Products 2.5, Server Archive Install 7 of 7 Multiplatform
File Name	C83CCML.tar.gz
File Size	163,208,004 bytes
Download 20 of 60:	Workplace Collaboration Products 2.5, Server Archive Install 1 of 1 for iSeries
File Name	C82MPML.tar
File Size	84,305,920 bytes
Download 21 of 60:	Workplace Collaboration Products 2.5, WebSphere Application Server Enterprise Enablement for iSeries
File Name	C82MQML.tar
File Size	665,528,320 bytes

11. Download these files only if you need to install WebSphere Application Server Base for iSeries™ V5.0:

Download 53 of 60:	WebSphere Portal - Express V5.0.2 - WebSphere Application Server Base for iSeries, V5.0 (1-1) (German, English International, Spanish, French, Italian, Japanese, Korean, Portuguese Brazilian, Chinese Simplified, Chinese Traditional)
---------------------------	--

File Name	C54KDML.exe
File Size	275,479,642 bytes

Download 54 of 60:	WebSphere Portal - Express V5.0.2 - WebSphere Application Server Base for iSeries, V5.0 (1-2) (German, English International, Spanish, French, Italian, Japanese, Korean, Portuguese Brazilian, Chinese Simplified, Chinese Traditional)
---------------------------	--

File Name	C54KEML.exe
File Size	144,281,013 bytes

12. If you need the tutorial for the Workplace Client Tools for Windows, you can optionally download the following files:

Download 4 of 60:	IBM Workplace Collaboration Products 2.5, Learning Client Tools for Windows
--------------------------	---

File Name	C83CBML.exe
File Size	615,251,968 bytes

Creating Workplace Collaboration Services install files

To create your Workplace Collaboration Services install files:

1. Create the directory **LWPArchives** under the install directory:
C:\WCS\LWPArchives
2. Move or copy the tar.gz images to the LWPArchives directory and rename each as follows. Rename the tar.gz files in place without making a separate copy (Figure 8).

Part Number	Rename to this file name:
C82MFML.tar.gz	LWP_Archive_Common1.tar.gz
C82MGML.tar.gz	LWP_WAS_Archive_Common1.tar.gz
C82MHML.tar.gz	LWP_WAS_Archive_Common2.tar.gz
C82MIML.tar.gz	LWP_WPS_Archive_Common1.tar.gz
C82MJML.tar.gz	WAS_Archive_Common1.tar.gz
C83XQML.tar.gz	WPS_Archive_Common1.tar.gz
C83CCML.tar.gz	LWP_Upgrade_Archive_Common1.tar.gz

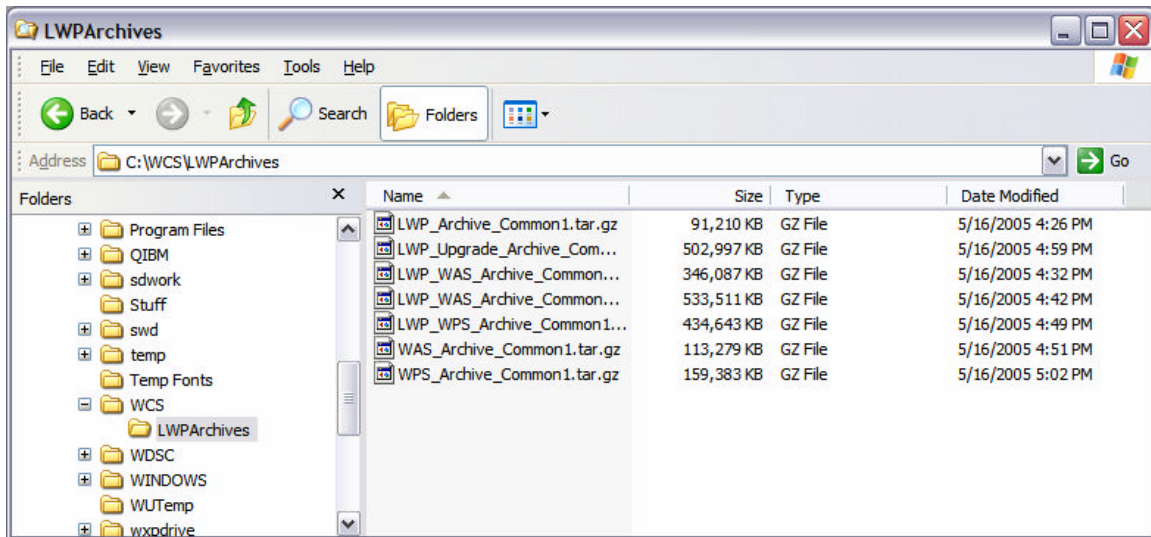


Figure 8: LWP Archives directory listing

3. Extract the tar image from the C82MPML.tar to the WCS directory. Preserve the folder structure.
 1. Copy the .tar file to the Integrated File System (IFS) on your iSeries system.
 2. On the command line enter: **STRQSH**
 3. Change the directory (using the CD command) so that it reflects where the .tar file is located.

Downloading IBM Workplace Collaboration Services V2.5 for iSeries from the IBM Software Access Catalog

4. Run: **pax -rv -C 819 -f C82MPML.tar** (Figure 9)

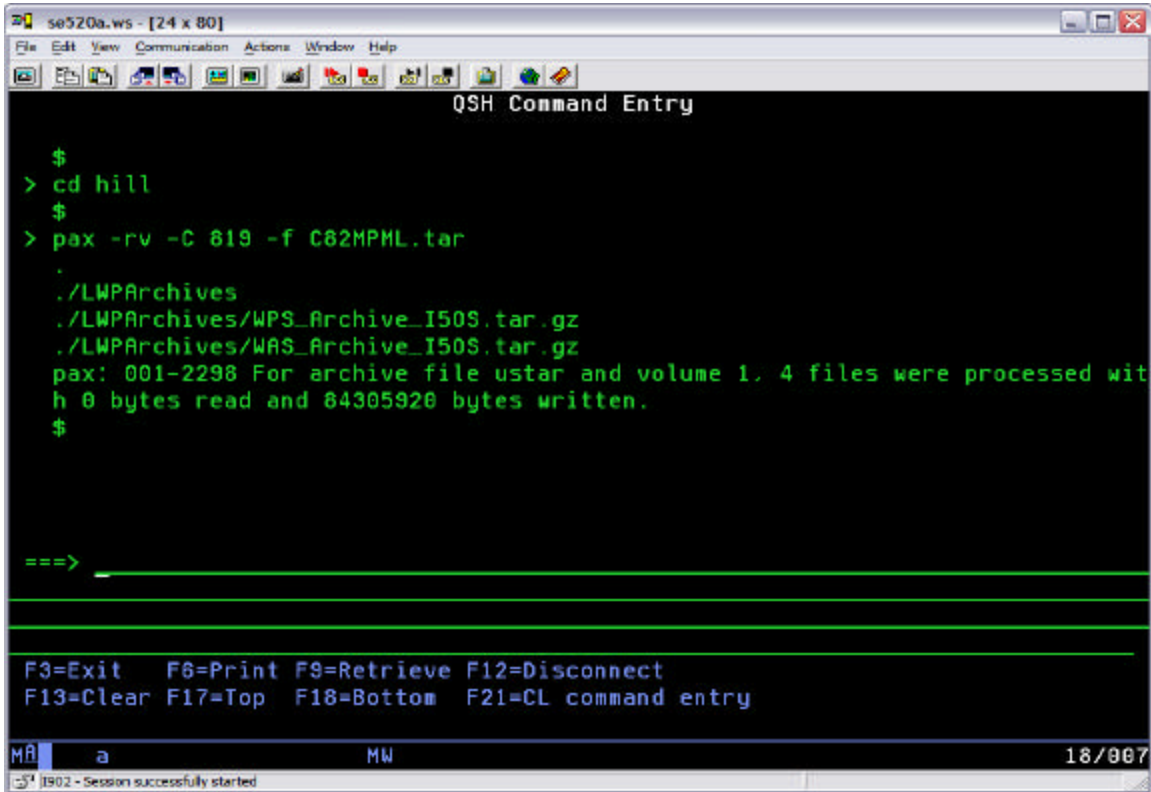


Figure 9: QSH command entry

5. Copy the two newly created files in the **LWPArchives** directory back to the C:\WCS\LWPArchives directory on your PC (Figure 10).

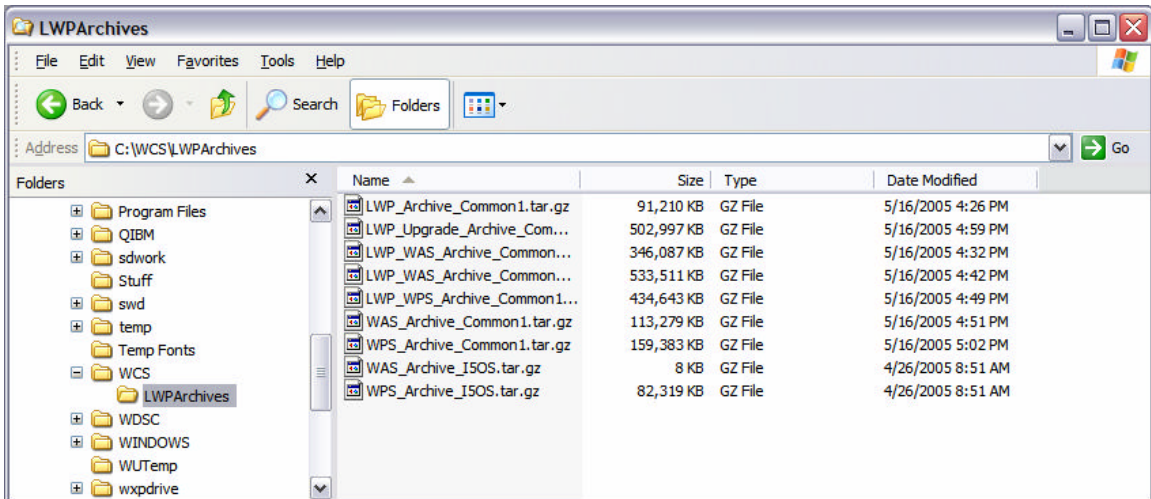


Figure 10: LWPArchives directory

Downloading IBM Workplace Collaboration Services V2.5 for iSeries from the IBM Software Access Catalog

6. Run **C83CAML.exe**, which is an auto extracting file. Extract its contents to C:\WCS (Figure 11).

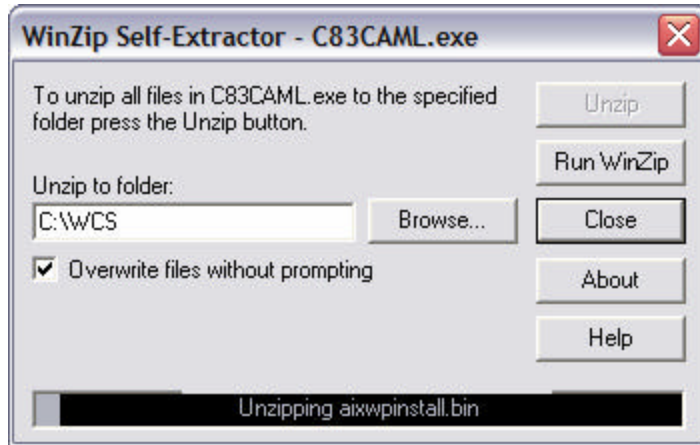


Figure 11: Extract to C:\WCS

The result of the extraction is the structure (shown below) in the WCS directory (Figure 12):

- C:\WCS\LWPArchives
- C:\WCS\LWPServer
- C:\WCS\LWPUserMigration
- C:\WCS\DB2-PMR36414

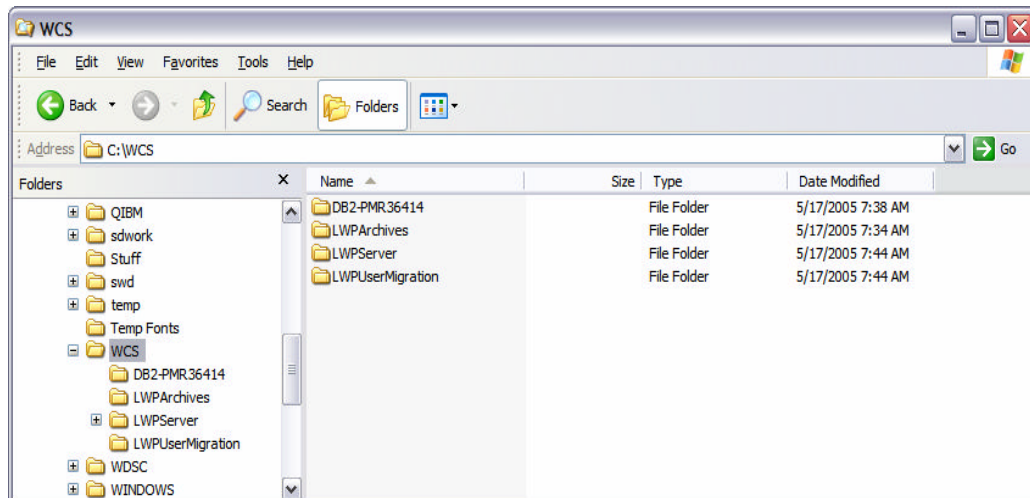


Figure 12: WCS directory

WebSphere install files

If you need to install WebSphere Application Server Base for iSeries V5.0, you also need to create the CDs to install this code.

(Note: C54KDML.exe and C54KEML.exe are self-extracting files. C54KDML.exe is CD 1 for the WebSphere Application Server install. C54KEML.exe is CD 2 for the WebSphere Application Server install.)

1. Run C54KDML.exe and extract to C:\WAS CD1 directory (Figure 13)
2. Run C54KEML.exe and extract to C:\WAS CD2 directory (Figure 14)
3. You can burn a CD or install directly from the files on your PC

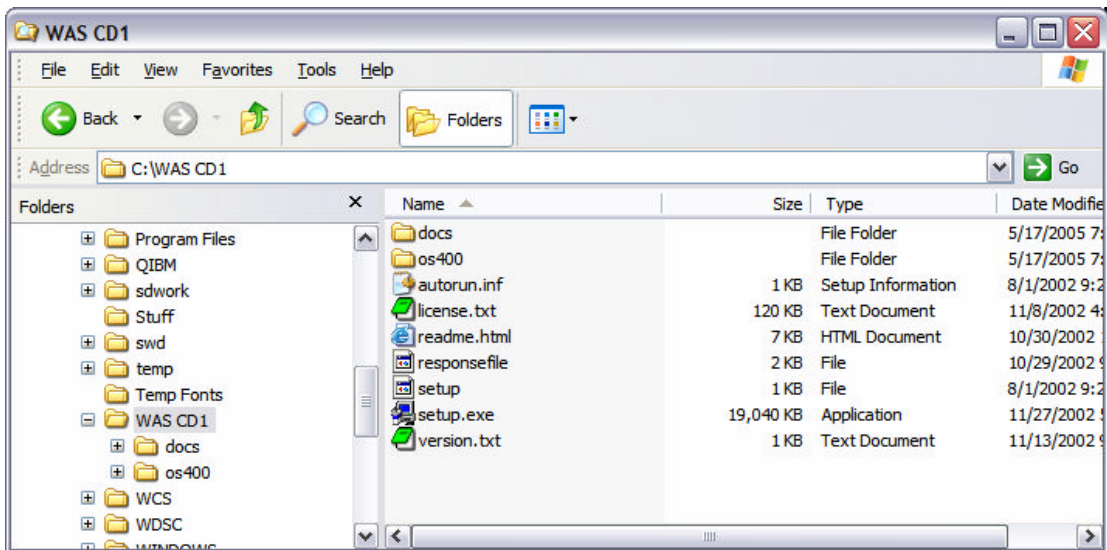


Figure 13: WAS CD1 directory contents

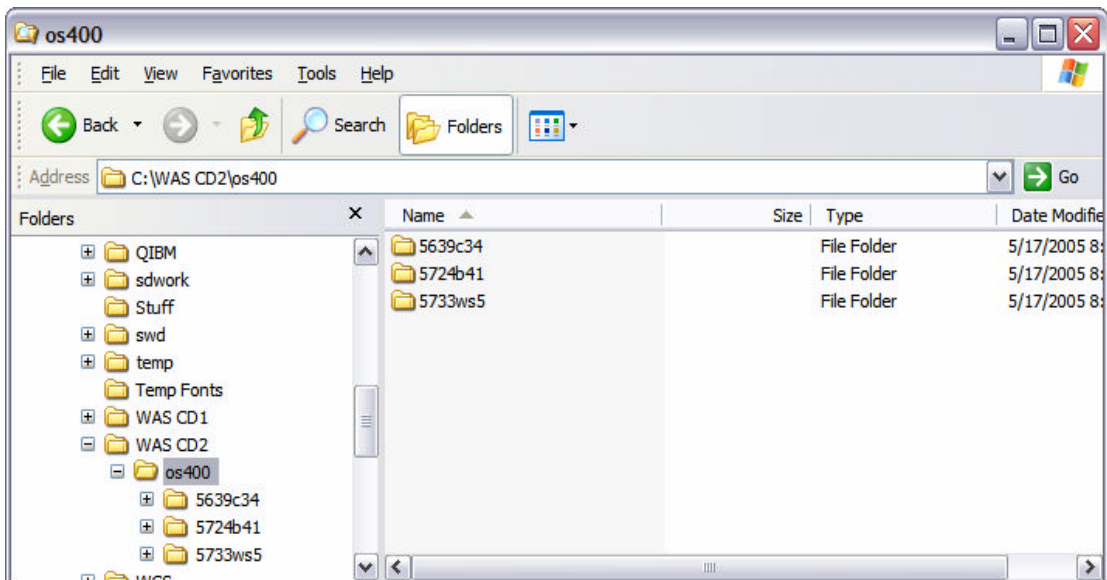


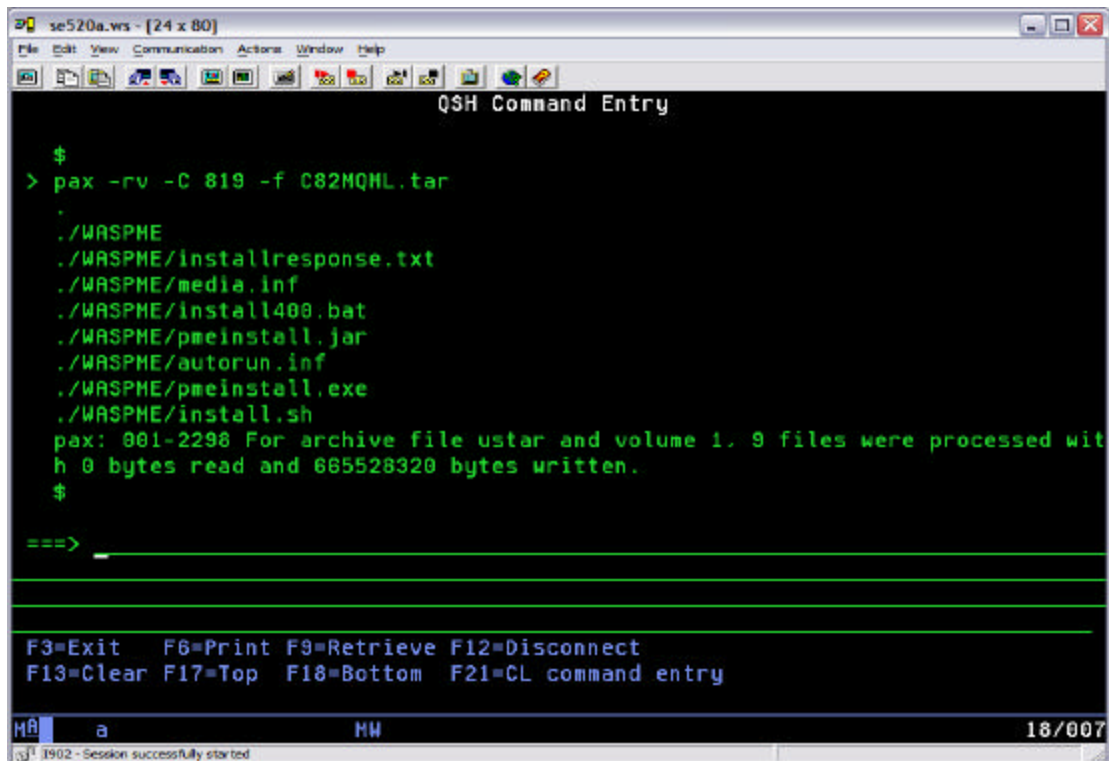
Figure 14: WAS CD2 os400 directory contents

WebSphere Enterprise Enablement install files

You will need to install WebSphere Enterprise Enablement before installing Workplace. If you do not have this installed on your iSeries system, you need to download the install code.

C82MQML.tar contains WebSphere Enterprise Enablement.

1. Extract the .tar image from the C82MPML.tar and burn these files to a CD.
 - a. Copy the .tar file to the IFS on your iSeries system.
 - b. On the command line enter: **STRQSH**
 - c. Change the directory (using the CD command) so that it reflects the location of the .tar file.
 - d. Run: **pax -rv -C 819 -f C82MQML.tar** (Figure 15)



```
se520a.ws - [24 x 80]
File Edit View Communication Actions Window Help
QSH Command Entry

$
> pax -rv -C 819 -f C82MQML.tar
.
./WASPME
./WASPME/installresponse.txt
./WASPME/media.inf
./WASPME/install400.bat
./WASPME/pmeinstall.jar
./WASPME/autorun.inf
./WASPME/pmeinstall.exe
./WASPME/install.sh
pax: 001-2298 For archive file ustar and volume 1, 9 files were processed with
h 0 bytes read and 665528320 bytes written.
$

===>

F3=Exit F6=Print F9=Retrieve F12=Disconnect
F13=Clear F17=Top F18=Bottom F21=CL command entry

M& a HW 16/007
1902 - Session successfully started
```

Figure 15: QSH Command Entry screen

2. Copy the WASPME directory and files to your PC.

You can now burn a CD or install directly from the files on your PC.

Summary

You have now successfully downloaded and prepared the media for installing IBM Workplace Collaboration Services V2.5. This software offering is a single product that provides a full range of integrated ready-to-use communication and collaboration tools. With the flexibility to deploy any mix of capabilities, it provides a ready-made foundation to build customized role-based Workplace environments that provide the tools and information people need to do their work more efficiently, anytime, anywhere.

Trademarks and disclaimers

IBM Corporation 1994-2005. All rights reserved.

References in this document to IBM products or services do not imply that IBM intends to make them available in every country.

The following terms are trademarks or registered trademarks of International Business Machines Corporation in the United States, other countries, or both: IBM, the IBM logo, eServer, Workplace, PartnerWorld, WebSphere, and iSeries.

Microsoft, Internet Explorer, Windows, Windows NT, and the Windows logo are trademarks of Microsoft Corporation in the United States, other countries, or both.

Other company, product or service names may be trademarks or service marks of others.

Information is provided "AS IS" without warranty of any kind.